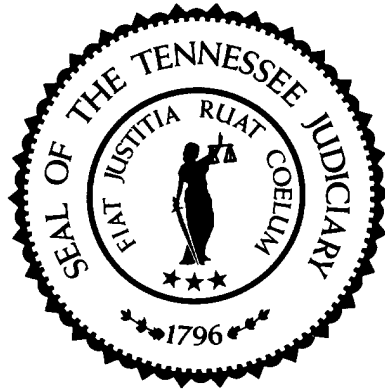


# Sentencing Practices in Tennessee



Administrative Office of the Courts

Information for Cases Sentenced  
Between July 1, 2014 and June 30, 2022

TDOC Data Extracted: March 2023  
Released: March 2023

# Sentencing Practices in Tennessee

## Table of Contents

Methodology	1
Sentence Type Information	
Class A	3
Class B	3
Class C	4
Class D	4
Class E	4
Average Incarceration Lengths in Months	
Class A	5
Rape of Child	6
Second Degree Murder	6
Especially Aggravated Kidnapping	7
Class B	8
Schedule II Cocaine	9
Aggravated Robbery	10
Aggravated Sexual Battery	11
Class C	12
Aggravated Burglary	13
Aggravated Assault	14
Schedule II Cocaine < ½ Gram	15
Schedule II Drugs: Max \$100,000 Fine	16
Class D	17
Theft: \$1,000 to \$10,000	18
Burglary Other Than Habitation	19
Identity Theft	20
Obtain Drugs by Fraud	21
Class E	22
Forgery: Up to \$1,000	23
Burglary: Auto	24
Theft: \$500 to \$1,000	25
Schedule VI Drugs: Not < ½ Ounce	26
Habitual Traffic Offender	27
Failure to Appear (Felony)	28
Average Probation Lengths in Months	
Class B	29
Class C	30
Class D	31
Class E	32
Average Split Sentence Lengths in Months	
Class B	33
Class C	34
Class D	35
Class E	36

## Methodology

The data used in evaluating sentencing practices comes from the Tennessee Department of Correction (TDOC); where individual offense data is captured. Each offense sentence is recorded individually, including cases of multiple offense convictions and eliminating the potential confusion in determining sentence lengths created by these multiple offense convictions. To establish a baseline for comparison purposes, data from multiple years was queried. The initial focus of this analysis consisted of cases where the defendants received incarceration only, either in a TDOC facility or a local jail. That has been expanded to include probation and alternative sentencing information as well. This data is not a sample, but is the entire population of sentences captured by the TDOC during the analyzed time frame.

Sentence lengths are reported for standard offenders, multiple offenders and for all offender types as a group from the body of convicted felons in the State Criminal or Circuit Criminal Courts. Standard and multiple offender defendant types were chosen because they comprise over 90% of all sentences in Tennessee.

Specific offenses are included in analysis first by choosing the top three most frequently occurring offenses in each felony class, then by a combination of occurrence frequency, overall impact on sentence length and by the increasing in frequency of the occurrence of the offense (i.e. the offense is happening in increasing amounts, but was not historically happening in large numbers). The following offenses make nearly 70% of convicted offenses and are included in the statistic table report.

Class A  
Rape of a Child  
Second Degree Murder  
Especially Aggravated Kidnapping  
Class B  
Schedule II Drugs: Cocaine  
Aggravated Robbery  
Aggravated Sexual Battery  
Class C  
Aggravated Burglary  
Aggravated Assault  
Schedule II Drugs: Cocaine < 1/2 Gram  
Schedule II Drugs: Up to \$100,000 Fine  
Class D  
Theft: \$1,000 to \$10,000  
Burglary: Other than Habitation or Auto  
Identity Theft  
Obtain Drugs by Fraud  
Class E  
Forgery: Up to \$1,000  
Burglary: Auto  
Theft: \$500 to \$1,000  
Schedule VI Drugs: Not Less than ½ Ounce  
Habitual Traffic Offender  
Failure to Appear (Felony)

Data for each felony class and defendant type (standard, multiple and all) are presented as well. The tables for the offenses listed and for the felony classes display the mean and median sentence lengths in months, the standard deviation, and the number of convictions for each year reported. This report contains basic incarceration, probation and alternative sentencing information and can be used for the following:

- analyzing trends
- evaluating the effectiveness of legislation aimed at reducing incarceration rates

Given that this data does not include demographic information; it cannot be used to evaluate any scenarios or trends that involve demographic references.

### **Note 1**

The numbers presented here and in previous reports may vary for the same years. Discrepancies are due in part to delayed reporting to the Tennessee Department of Corrections and parole violations over time. Also, due to delayed reporting to TDOC, the total population in recent years may not be included in the analysis at the time of publication.

### **Note 2**

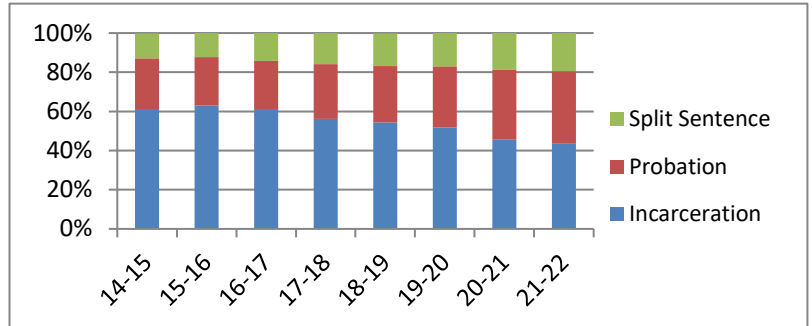
It should be noted that the numbers of filings and dispositions that were reduced statewide due to the impacts of the Covid 19 pandemic have returned to the pre-Covid rate. The end effect of this was an increase in the number of sentences passed during this fiscal year.

# Sentence Type Information

Note: Column N Indicates the number of felony convictions. Individual offenders can have multiple convictions. Incarceration includes life without parole and death sentences. Probation includes sentences to community corrections.

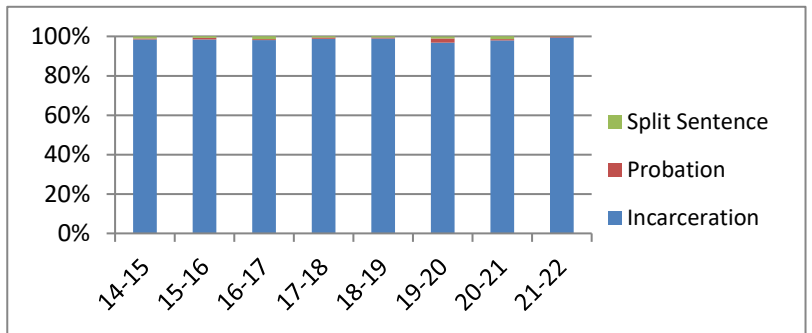
**Percent of Sentence Type - All Felony Classes - All Offenders**

Fiscal Year	Incarceration	Probation	Split Sentence	N
	Percent	Percent	Percent	
14-15	60.7%	26.3%	12.9%	34,781
15-16	63.1%	24.6%	12.3%	28,642
16-17	60.8%	25.0%	14.2%	27,053
17-18	56.2%	27.9%	15.9%	33,833
18-19	54.3%	28.8%	16.8%	33,480
19-20	51.8%	31.2%	17.0%	20,945
20-21	45.5%	35.7%	18.8%	19,471
21-22	43.8%	36.8%	19.4%	27,226



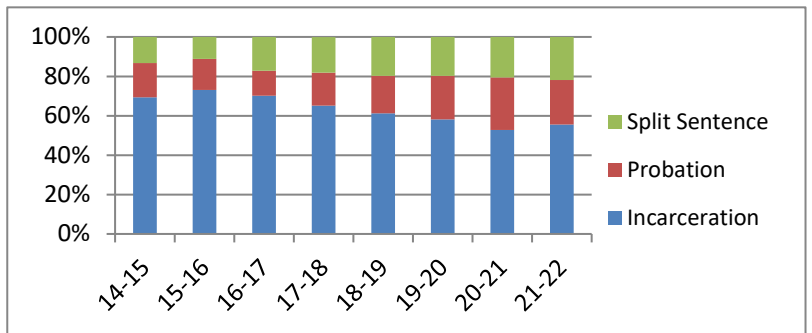
**Percent of Sentence Type - Felony Class A - All Offenders**

Fiscal Year	Incarceration	Probation	Split Sentence	N
	Percent	Percent	Percent	
14-15	98.5%	0.4%	1.0%	478
15-16	98.4%	0.9%	0.7%	431
16-17	98.1%	0.5%	1.4%	364
17-18	98.8%	0.7%	0.5%	583
18-19	99.0%	0.4%	0.6%	508
19-20	96.9%	2.1%	0.9%	326
20-21	97.9%	0.7%	1.4%	282
21-22	99.5%	0.4%	0.2%	568



**Percent of Sentence Type - Felony Class B - All Offenders**

Fiscal Year	Incarceration	Probation	Split Sentence	N
	Percent	Percent	Percent	
14-15	69.4%	17.4%	13.2%	3,031
15-16	73.1%	15.7%	11.2%	2,499
16-17	70.2%	12.7%	17.1%	2,760
17-18	65.2%	16.6%	18.1%	3,826
18-19	61.2%	19.0%	19.8%	4,308
19-20	58.1%	22.1%	19.8%	2,935
20-21	52.8%	26.6%	20.6%	3,184
21-22	55.6%	22.5%	21.9%	4,482

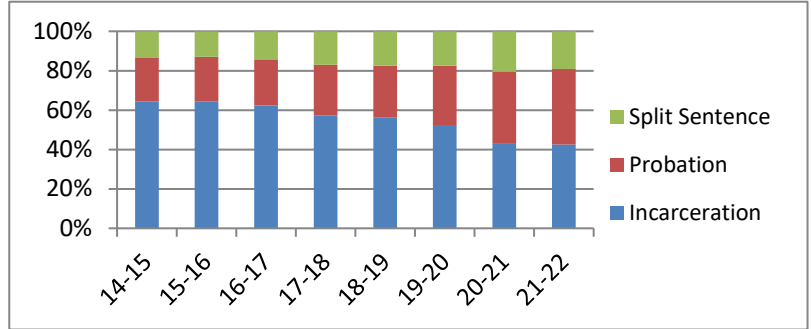


# Sentence Type Information

Note: Column N Indicates the number of felony convictions. Individual offenders can have multiple convictions. Incarceration includes life without parole and death sentences. Probation includes sentences to community corrections.

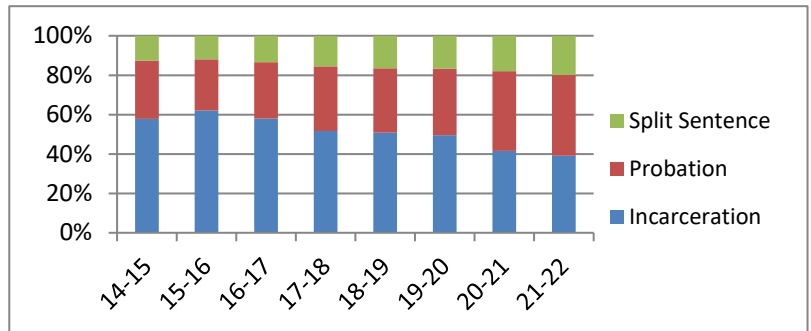
**Percent of Sentence Type - Felony Class C - All Offenders**

Fiscal Year	Incarceration	Probation	Split Sentence	N
	Percent	Percent	Percent	
14-15	64.4%	22.3%	13.3%	9,292
15-16	64.4%	22.7%	12.8%	7,864
16-17	62.4%	23.4%	14.2%	7,856
17-18	57.4%	25.6%	17.0%	10,240
18-19	56.4%	26.2%	17.4%	10,404
19-20	51.9%	30.7%	17.4%	6,494
20-21	42.9%	36.5%	20.6%	6,053
21-22	42.6%	38.3%	19.1%	8,394



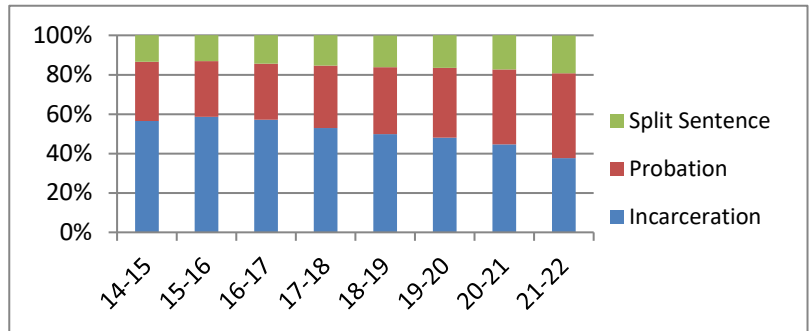
**Percent of Sentence Type - Felony Class D - All Offenders**

Fiscal Year	Incarceration	Probation	Split Sentence	N
	Percent	Percent	Percent	
14-15	57.9%	29.5%	12.6%	10,582
15-16	62.0%	26.0%	12.0%	8,240
16-17	58.0%	28.6%	13.4%	7,201
17-18	51.7%	32.7%	15.5%	7,955
18-19	50.9%	32.6%	16.5%	7,616
19-20	49.5%	33.9%	16.6%	4,914
20-21	41.6%	40.4%	18.0%	4,722
21-22	39.1%	41.0%	19.8%	6,502



**Percent of Sentence Type - Felony Class E - All Offenders**

Fiscal Year	Incarceration	Probation	Split Sentence	N
	Percent	Percent	Percent	
14-15	56.5%	30.1%	13.4%	11,398
15-16	58.7%	28.2%	13.1%	9,608
16-17	57.2%	28.4%	14.4%	8,872
17-18	53.0%	31.7%	15.3%	11,229
18-19	49.8%	34.0%	16.1%	10,644
19-20	48.1%	35.4%	16.6%	6,276
20-21	44.6%	38.1%	17.3%	5,230
21-22	37.7%	43.0%	19.2%	7,280

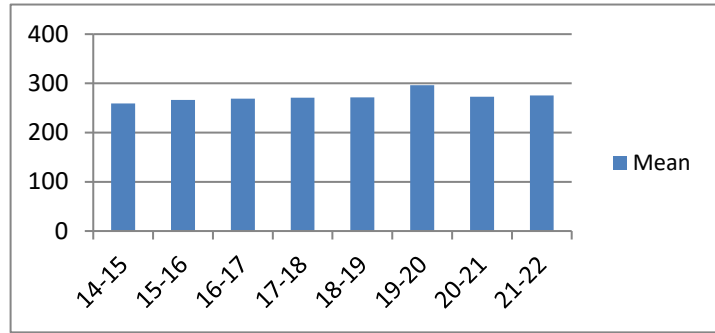


## Average Incarceration Lengths in Months by Felony Class and Offense

Note: Column N indicates the number of felony convictions. Individual offenders can have multiple convictions. Incarceration includes life without parole and death sentences. Probation includes sentences to community corrections.

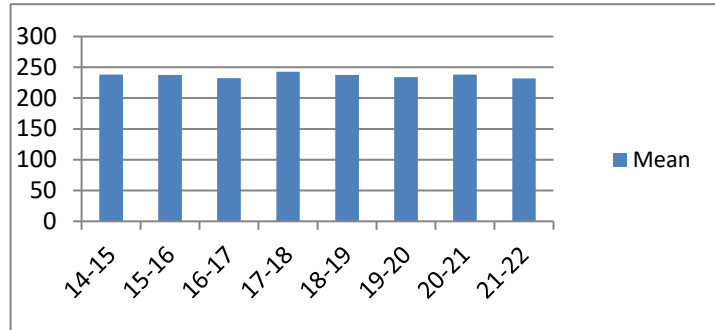
**Average Incarceration Length - Class A - All Offenders**

Fiscal Year	Mean	Median	Standard Deviation	N
14-15	258.98	240.00	89.37	471
15-16	266.45	240.00	98.29	423
16-17	269.25	240.00	101.27	353
17-18	271.14	264.00	90.83	575
18-19	271.37	240.00	95.87	503
19-20	296.58	273.00	132.48	316
20-21	272.93	276.00	91.54	276
21-22	275.50	240.00	103.38	564



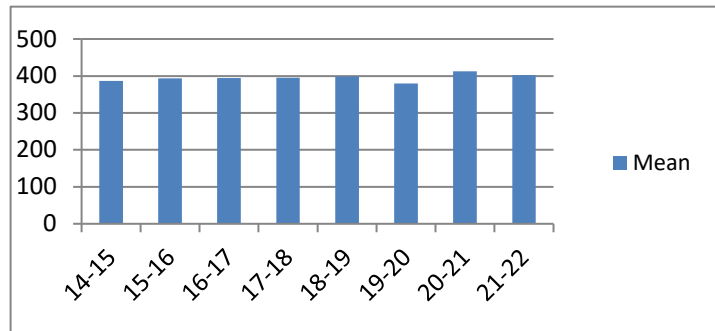
**Average Incarceration Length - Class A - Standard Offenders**

Fiscal Year	Mean	Median	Standard Deviation	N
14-15	238.44	240.00	53.44	370
15-16	237.42	240.00	52.89	335
16-17	232.43	240.00	50.58	267
17-18	243.05	240.00	48.37	451
18-19	237.57	240.00	51.71	383
19-20	234.06	240.00	56.79	215
20-21	237.99	240.00	53.67	205
21-22	231.91	240.00	50.92	404



**Average Incarceration Length - Class A - Multiple Offenders**

Fiscal Year	Mean	Median	Standard Deviation	N
14-15	386.86	384.00	104.00	67
15-16	393.44	384.00	82.57	68
16-17	394.39	360.00	59.67	67
17-18	395.19	360.00	56.97	89
18-19	398.87	360.00	53.79	92
19-20	379.73	360.00	54.16	73
20-21	412.98	420.00	51.89	57
21-22	402.09	396.00	61.56	132

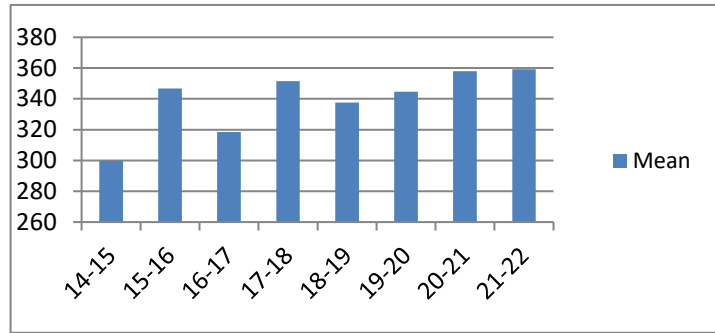


## Average Incarceration Lengths in Months by Felony Class and Offense

Note: Column N indicates the number of felony convictions. Individual offenders can have multiple convictions. Incarceration includes life without parole and death sentences. Probation includes sentences to community corrections.

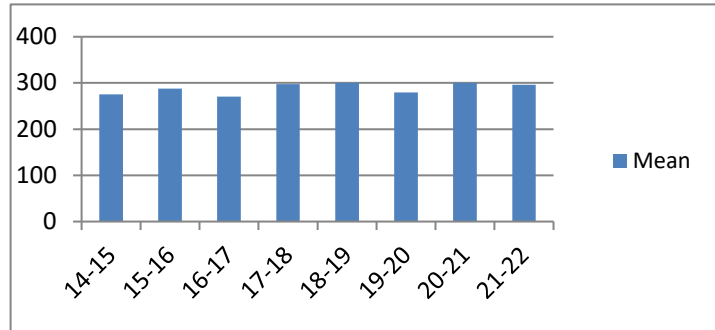
### Average Incarceration Length - Rape of a Child - All Offenders

Fiscal Year	Mean	Median	Standard Deviation	N
14-15	299.68	300.00	63.47	75
15-16	346.80	300.00	101.77	50
16-17	318.49	300.00	76.62	74
17-18	351.48	300.00	72.11	100
18-19	337.55	300.00	46.54	85
19-20	344.68	360.00	60.95	65
20-21	357.89	360.00	68.72	57
21-22	359.26	360.00	66.25	81



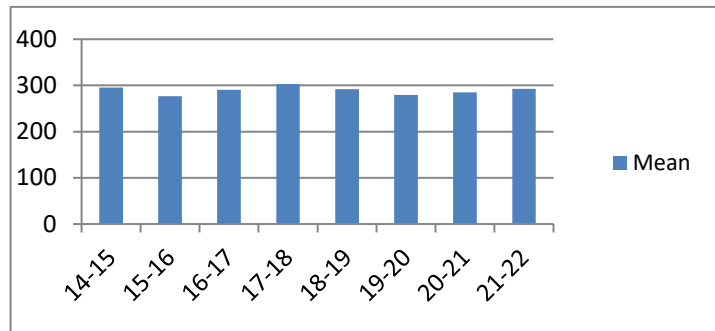
### Average Incarceration Length - Rape of a Child - Standard Offenders

Fiscal Year	Mean	Median	Standard Deviation	N
14-15	275.58	300.00	42.24	57
15-16	288.00	300.00	29.93	28
16-17	270.70	300.00	49.64	43
17-18	297.82	300.00	11.34	55
18-19	300.00	300.00	0.00	44
19-20	279.16	300.00	44.87	19
20-21	300.00	300.00	0.00	28
21-22	295.86	300.00	22.28	29



### Average Incarceration Length - Second Degree Murder - All Offenders

Fiscal Year	Mean	Median	Standard Deviation	N
14-15	295.62	300.00	103.64	78
15-16	276.61	240.00	94.35	94
16-17	290.74	300.00	97.64	70
17-18	302.72	300.00	102.67	97
18-19	292.24	288.00	99.42	126
19-20	279.35	264.00	90.51	68
20-21	285.10	276.00	96.44	78
21-22	292.36	300.00	94.92	161



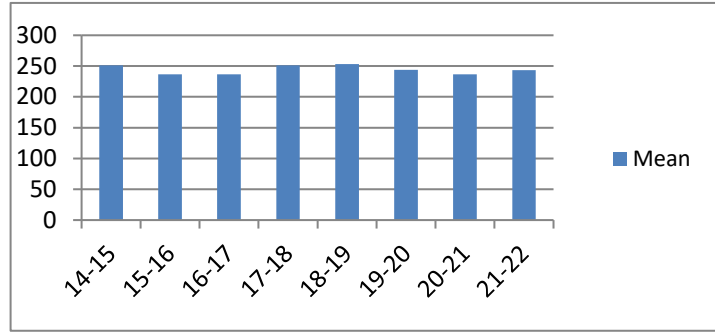


# Average Incarceration Lengths in Months by Felony Class and Offense

Note: Column N indicates the number of felony convictions. Individual offenders can have multiple convictions. Incarceration includes life without parole and death sentences. Probation includes sentences to community corrections.

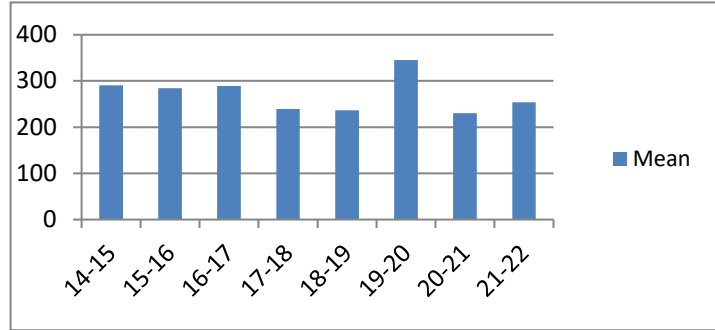
## Average Incarceration Length - Second Degree Murder - Standard Offenders

Fiscal Year	Mean	Median	Standard Deviation	N
14-15	251.25	240.00	44.72	48
15-16	236.82	240.00	43.09	67
16-17	236.82	240.00	49.28	49
17-18	250.98	252.00	45.52	59
18-19	253.30	240.00	44.21	97
19-20	243.96	240.00	45.06	50
20-21	236.69	240.00	47.74	52
21-22	243.60	240.00	46.66	105



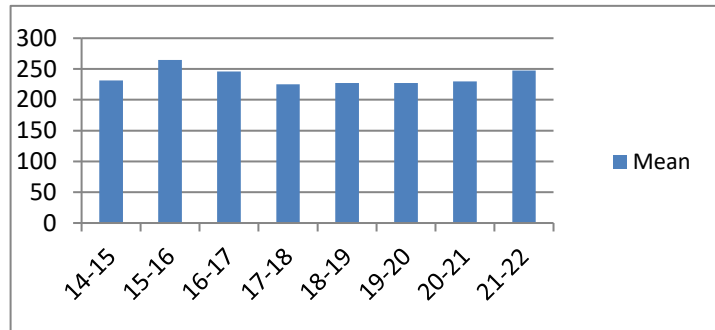
## Average Incarceration Length - Especially Aggravated Kidnapping - All Offenders

Fiscal Year	Mean	Median	Standard Deviation	N
14-15	290.57	264.00	117.33	35
15-16	284.11	300.00	106.24	57
16-17	289.35	240.00	146.97	31
17-18	239.27	240.00	61.62	33
18-19	236.48	240.00	64.27	46
19-20	345.12	240.00	207.97	25
20-21	230.00	198.00	55.64	9
21-22	253.95	240.00	64.16	37



## Average Incarceration Length - Especially Aggravated Kidnapping - Standard Offenders

Fiscal Year	Mean	Median	Standard Deviation	N
14-15	231.36	240.00	53.28	25
15-16	264.48	300.00	56.91	50
16-17	246.22	240.00	31.11	27
17-18	225.20	210.00	43.06	30
18-19	227.08	240.00	41.70	39
19-20	227.33	228.00	47.19	18
20-21	230.00	198.00	55.64	9
21-22	247.67	240.00	52.28	36

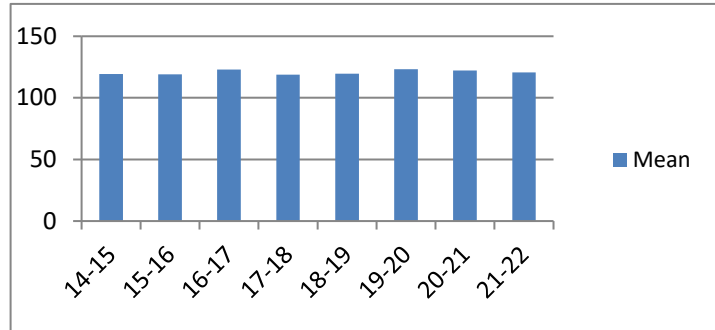


## Average Incarceration Lengths in Months by Felony Class and Offense

Note: Column N indicates the number of felony convictions. Individual offenders can have multiple convictions. Incarceration includes life without parole and death sentences. Probation includes sentences to community corrections.

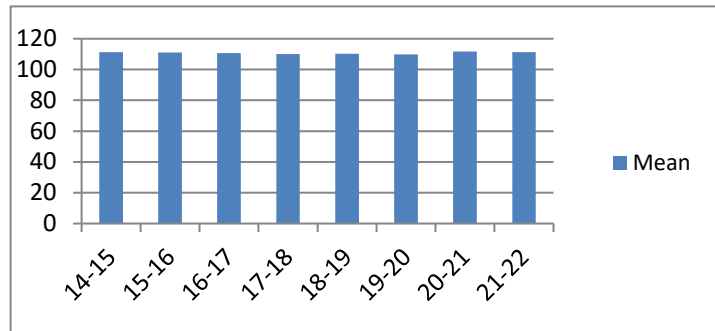
### Average Incarceration Length - Felony Class B - All Offenders

Fiscal Year	Mean	Median	Standard Deviation	N
14-15	119.34	108.00	35.80	2,104
15-16	119.12	108.00	38.07	1,826
16-17	122.93	114.00	40.77	1,937
17-18	118.95	108.00	36.99	2,496
18-19	119.59	108.00	39.45	2,625
19-20	123.13	108.00	44.94	1,705
20-21	122.27	120.00	38.44	1,678
21-22	120.78	108.00	35.96	2,493



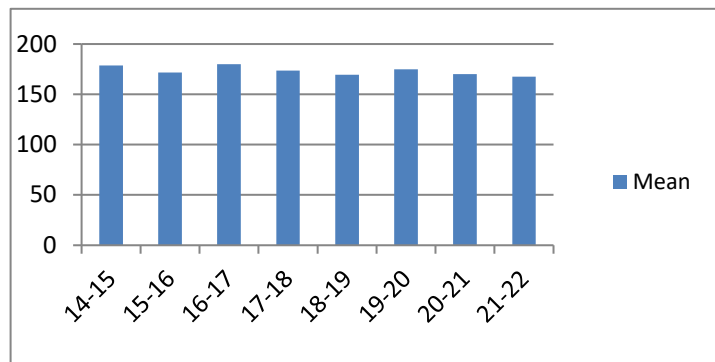
### Average Incarceration Length - Felony Class B - Standard Offenders

Fiscal Year	Mean	Median	Standard Deviation	N
14-15	111.31	96.00	20.02	1,804
15-16	111.04	96.00	18.54	1,497
16-17	110.61	96.00	18.68	1,588
17-18	110.05	96.00	19.21	2,099
18-19	110.17	96.00	22.49	2,192
19-20	109.87	96.00	19.86	1,354
20-21	111.62	108.00	19.13	1,382
21-22	111.21	96.00	19.58	2,032



### Average Incarceration Length - Felony Class B - Multiple Offenders

Fiscal Year	Mean	Median	Standard Deviation	N
14-15	178.70	180.00	43.11	222
15-16	171.85	180.00	33.60	215
16-17	179.83	180.00	41.68	285
17-18	173.60	168.00	37.72	272
18-19	169.60	156.00	39.84	315
19-20	174.76	174.00	37.69	238
20-21	170.07	162.00	38.17	213
21-22	167.64	168.00	30.56	348

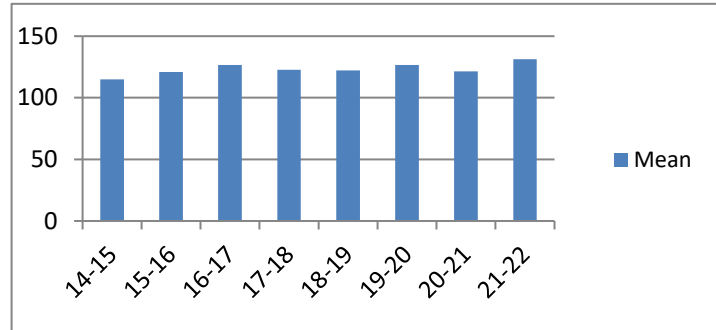


## Average Incarceration Lengths in Months by Felony Class and Offense

Note: Column N indicates the number of felony convictions. Individual offenders can have multiple convictions. Incarceration includes life without parole and death sentences. Probation includes sentences to community corrections.

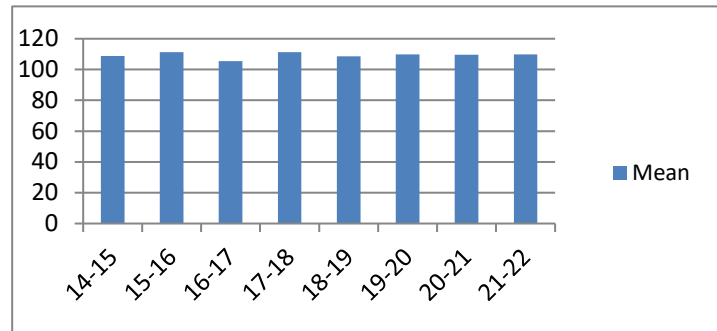
### Average Incarceration Length - Schedule II Cocaine - All Offenders

Fiscal Year	Mean	Median	Standard Deviation	N
14-15	114.97	96.00	32.03	344
15-16	120.90	120.00	35.30	205
16-17	126.54	120.00	45.57	181
17-18	122.81	111.00	39.22	228
18-19	122.29	108.00	41.01	239
19-20	126.58	120.00	45.23	135
20-21	121.52	120.00	37.01	71
21-22	131.26	120.00	44.62	106



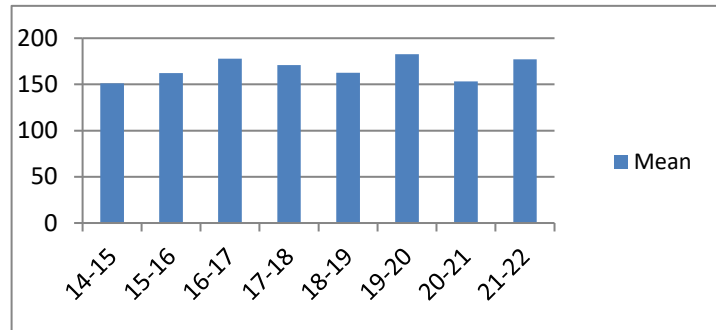
### Average Incarceration Length - Schedule II Cocaine - Standard Offenders

Fiscal Year	Mean	Median	Standard Deviation	N
14-15	108.76	96.00	20.97	300
15-16	111.20	108.00	18.95	169
16-17	105.48	96.00	15.59	131
17-18	111.24	108.00	21.26	185
18-19	108.60	96.00	17.95	192
19-20	109.81	96.00	17.74	106
20-21	109.63	108.00	14.86	59
21-22	109.76	96.00	20.28	75



### Average Incarceration Length - Schedule II Cocaine - Multiple Offenders

Fiscal Year	Mean	Median	Standard Deviation	N
14-15	151.03	144.00	41.33	35
15-16	162.40	162.00	37.12	30
16-17	177.87	180.00	40.64	45
17-18	170.84	150.00	41.14	38
18-19	162.49	156.00	23.25	37
19-20	182.86	180.00	42.41	21
20-21	153.33	144.00	26.68	9
21-22	177.21	177.00	33.84	28

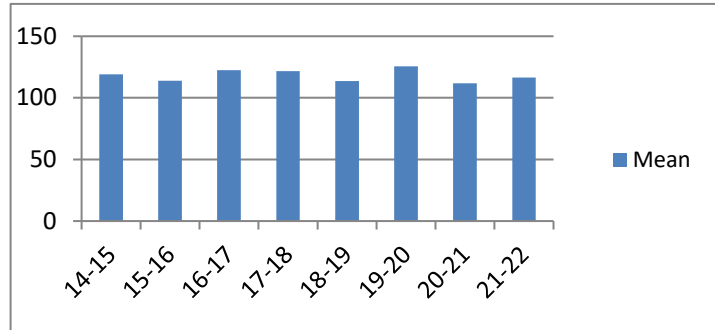


## Average Incarceration Lengths in Months by Felony Class and Offense

Note: Column N indicates the number of felony convictions. Individual offenders can have multiple convictions. Incarceration includes life without parole and death sentences. Probation includes sentences to community corrections.

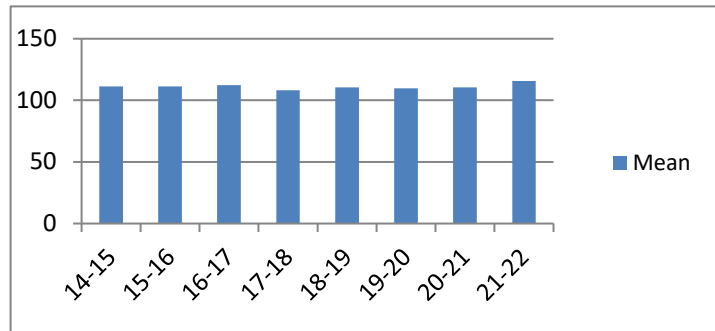
**Average Incarceration Length -  
Aggravated Robbery - All Offenders**

Fiscal Year	Mean	Median	Standard Deviation	N
14-15	119.02	108.00	39.84	411
15-16	113.88	96.00	32.42	396
16-17	122.34	108.00	44.29	305
17-18	121.74	96.00	45.44	457
18-19	113.74	96.00	32.69	344
19-20	125.51	96.00	61.08	227
20-21	111.86	96.00	30.94	218
21-22	116.51	96.00	29.85	324



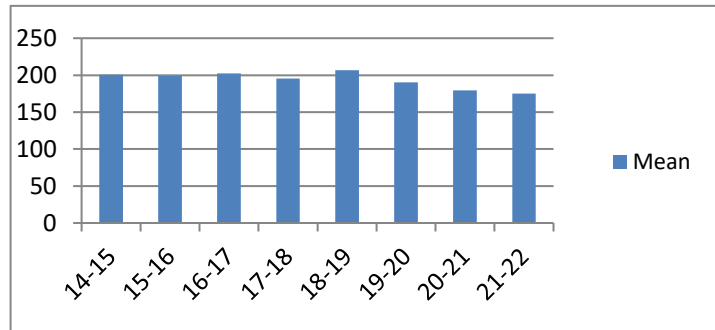
**Average Incarceration Length -  
Aggravated Robbery - Standard Offenders**

Fiscal Year	Mean	Median	Standard Deviation	N
14-15	111.25	108.00	17.66	334
15-16	111.22	102.00	20.35	331
16-17	112.34	108.00	17.96	250
17-18	108.28	96.00	17.53	324
18-19	110.56	96.00	22.19	288
19-20	109.68	96.00	17.89	156
20-21	110.40	96.00	19.93	185
21-22	115.70	108.00	21.92	247



**Average Incarceration Length -  
Aggravated Robbery - Multiple Offenders**

Fiscal Year	Mean	Median	Standard Deviation	N
14-15	200.73	180.00	29.70	33
15-16	199.00	201.00	22.57	18
16-17	202.38	210.00	34.89	26
17-18	195.29	192.00	24.02	62
18-19	206.53	216.00	26.41	19
19-20	190.18	192.00	19.93	33
20-21	179.33	168.00	45.84	9
21-22	174.92	168.00	20.69	26

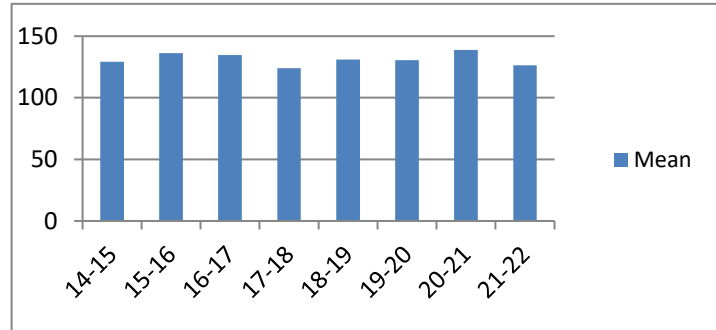


## Average Incarceration Lengths in Months by Felony Class and Offense

Note: Column N indicates the number of felony convictions. Individual offenders can have multiple convictions. Incarceration includes life without parole and death sentences. Probation includes sentences to community corrections.

### Average Incarceration Length - Aggravated Sexual Battery - All Offenders

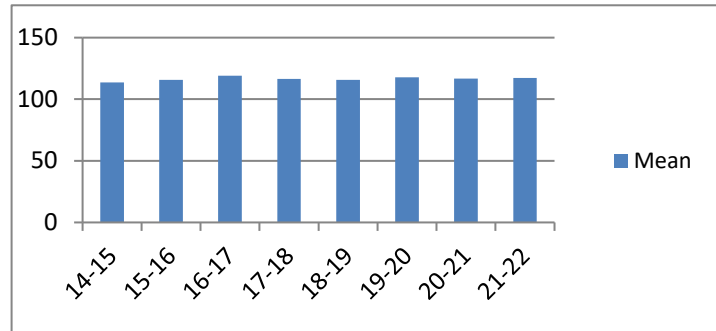
Fiscal Year	Mean	Median	Standard Deviation	N
14-15	129.24	120.00	41.85	168
15-16	136.14	120.00	42.73	91
16-17	134.71	120.00	43.05	165
17-18	124.06	120.00	32.86	216
18-19	131.00	120.00	48.06	220
19-20	130.64	120.00	42.63	111
20-21	138.76	120.00	41.49	109
21-22	126.46	120.00	33.50	176



low occurrence frequencies.

### Average Incarceration Length - Aggravated Sexual Battery - Standard Offenders

Fiscal Year	Mean	Median	Standard Deviation	N
14-15	113.61	108.00	16.99	139
15-16	115.81	120.00	17.53	63
16-17	119.22	120.00	19.25	138
17-18	116.50	120.00	18.15	199
18-19	115.64	120.00	18.27	187
19-20	117.70	120.00	18.98	94
20-21	116.84	120.00	19.53	76
21-22	117.24	120.00	20.02	150



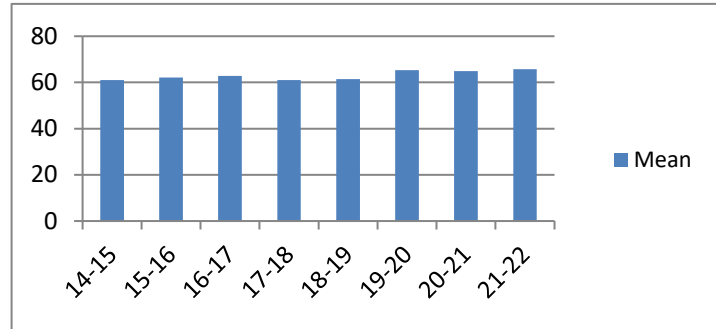
The table for multiple offenders was not included due to low occurrence frequencies.

## Average Incarceration Lengths in Months by Felony Class and Offense

Note: Column N indicates the number of felony convictions. Individual offenders can have multiple convictions. Incarceration includes life without parole and death sentences. Probation includes sentences to community corrections.

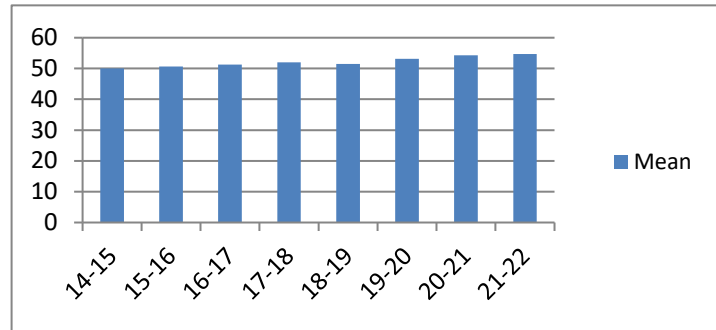
**Average Incarceration Length - Class C -  
All Offenders**

Fiscal Year	Mean	Median	Standard Deviation	N
14-15	61.03	48.00	30.17	5,985
15-16	62.17	60.00	29.13	5,067
16-17	62.88	60.00	29.59	4,904
17-18	61.00	60.00	27.91	5,872
18-19	61.37	54.00	28.41	5,868
19-20	65.32	60.00	31.95	3,372
20-21	64.94	60.00	29.53	2,598
21-22	65.74	60.00	30.02	3,580



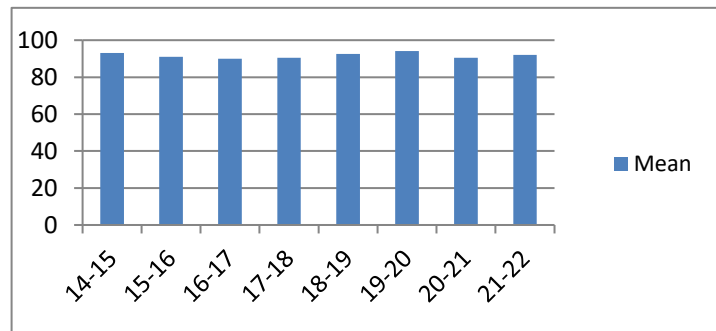
**Average Incarceration Length - Class C -  
Standard Offenders**

Fiscal Year	Mean	Median	Standard Deviation	N
14-15	50.04	48.00	16.49	4,730
15-16	50.70	48.00	16.60	3,876
16-17	51.28	48.00	16.25	3,748
17-18	51.99	48.00	16.54	4,783
18-19	51.44	48.00	16.82	4,663
19-20	53.18	48.00	19.85	2,554
20-21	54.25	48.00	18.01	1,971
21-22	54.71	48.00	18.07	2,718



**Average Incarceration Length - Class C -  
Multiple Offenders**

Fiscal Year	Mean	Median	Standard Deviation	N
14-15	93.08	96.00	22.11	966
15-16	91.03	84.00	21.10	928
16-17	89.97	84.00	19.99	878
17-18	90.45	96.00	20.26	845
18-19	92.60	96.00	20.73	971
19-20	94.20	96.00	20.58	592
20-21	90.49	96.00	22.47	476
21-22	91.97	96.00	22.70	650

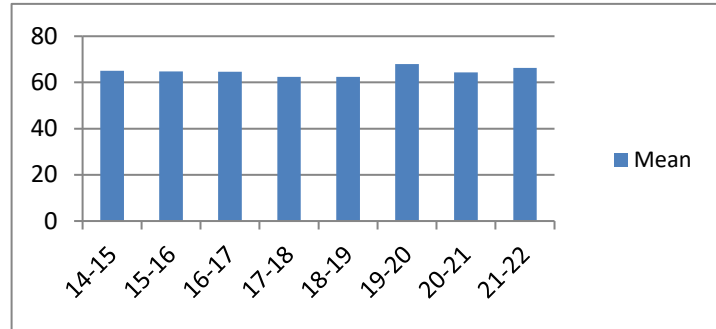


## Average Incarceration Lengths in Months by Felony Class and Offense

Note: Column N indicates the number of felony convictions. Individual offenders can have multiple convictions. Incarceration includes life without parole and death sentences. Probation includes sentences to community corrections.

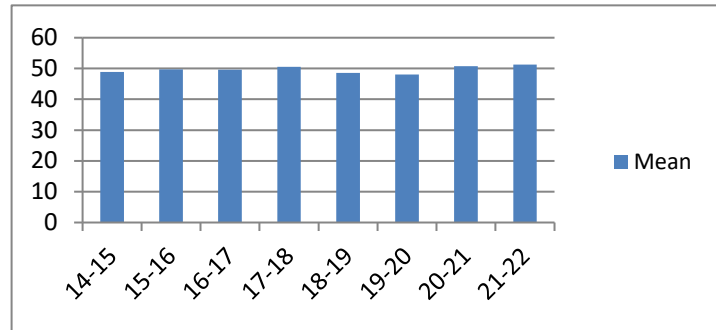
### Average Incarceration Length - Aggravated Burglary - All Offenders

Fiscal Year	Mean	Median	Standard Deviation	N
14-15	64.99	48.00	33.79	1,680
15-16	64.78	60.00	31.79	1,377
16-17	64.60	60.00	31.68	1,047
17-18	62.46	54.00	30.95	1,088
18-19	62.43	48.00	31.45	985
19-20	67.98	48.00	38.11	489
20-21	64.31	60.00	32.50	341
21-22	66.35	60.00	34.15	312



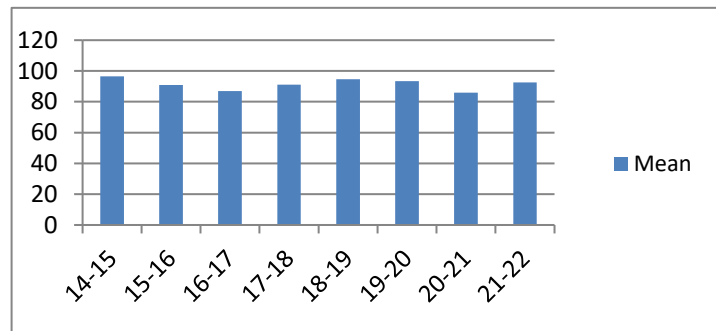
### Average Incarceration Length - Aggravated Burglary - Standard Offenders

Fiscal Year	Mean	Median	Standard Deviation	N
14-15	48.91	48.00	16.72	1,205
15-16	49.73	48.00	14.28	979
16-17	49.60	48.00	14.21	739
17-18	50.59	48.00	15.19	852
18-19	48.58	48.00	14.43	739
19-20	48.05	48.00	15.19	330
20-21	50.72	48.00	15.33	254
21-22	51.25	48.00	14.95	231



### Average Incarceration Length - Aggravated Burglary - Multiple Offenders

Fiscal Year	Mean	Median	Standard Deviation	N
14-15	96.44	96.00	21.98	374
15-16	90.81	84.00	22.95	297
16-17	86.91	75.50	18.59	222
17-18	91.15	96.00	19.86	172
18-19	94.73	96.00	20.46	198
19-20	93.43	96.00	19.78	101
20-21	85.82	72.00	21.95	60
21-22	92.54	96.00	23.69	59

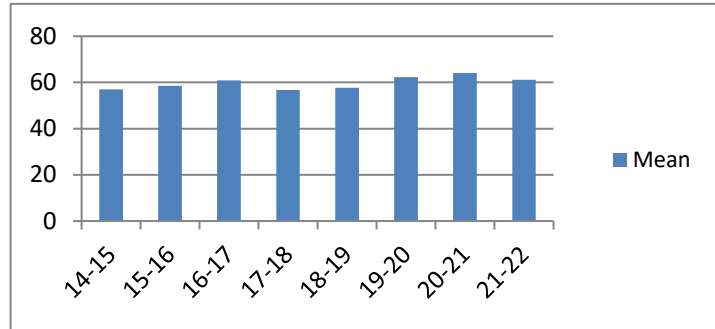


## Average Incarceration Lengths in Months by Felony Class and Offense

Note: Column N indicates the number of felony convictions. Individual offenders can have multiple convictions. Incarceration includes life without parole and death sentences. Probation includes sentences to community corrections.

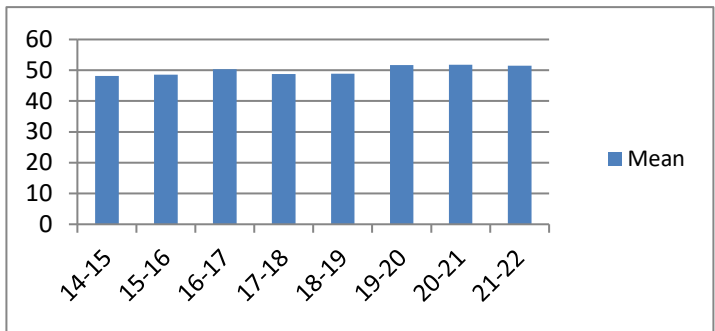
### Average Incarceration Length - Aggravated Assault - All Offenders

Fiscal Year	Mean	Median	Standard Deviation	N
14-15	57.01	48.00	26.56	1,050
15-16	58.56	48.00	28.52	1,009
16-17	60.83	48.00	27.73	965
17-18	56.78	48.00	25.91	1,212
18-19	57.71	48.00	25.64	1,300
19-20	62.29	60.00	29.91	810
20-21	64.08	60.00	30.11	633
21-22	61.12	54.00	27.04	873



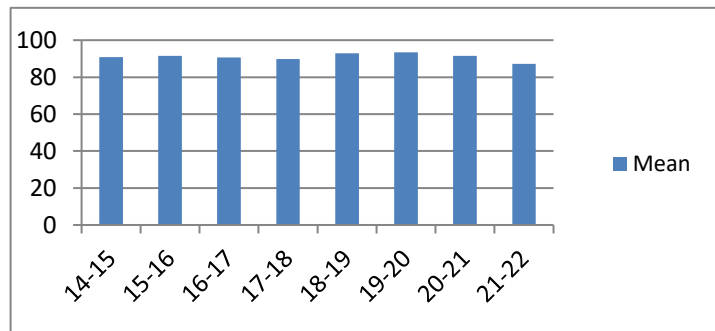
### Average Incarceration Length - Aggravated Assault - Standard Offenders

Fiscal Year	Mean	Median	Standard Deviation	N
14-15	48.16	36.03	14.64	866
15-16	48.58	42.00	16.81	808
16-17	50.37	48.00	15.85	756
17-18	48.75	48.00	15.13	1,011
18-19	48.84	48.00	15.47	1,049
19-20	51.72	48.00	19.44	633
20-21	51.78	48.00	17.09	467
21-22	51.51	48.00	17.82	670



### Average Incarceration Length - Aggravated Assault - Multiple Offenders

Fiscal Year	Mean	Median	Standard Deviation	N
14-15	90.76	96.00	20.68	143
15-16	91.56	84.00	21.52	155
16-17	90.73	96.00	19.59	156
17-18	89.83	84.00	20.37	165
18-19	92.95	96.00	22.74	220
19-20	93.42	96.00	20.51	121
20-21	91.45	96.00	23.42	132
21-22	87.12	84.00	19.16	158



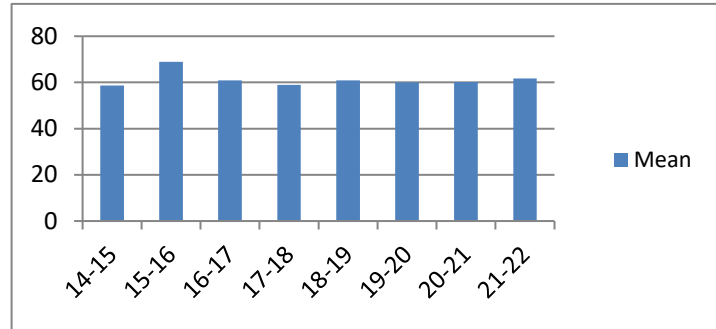


## Average Incarceration Lengths in Months by Felony Class and Offense

Note: Column N indicates the number of felony convictions. Individual offenders can have multiple convictions. Incarceration includes life without parole and death sentences. Probation includes sentences to community corrections.

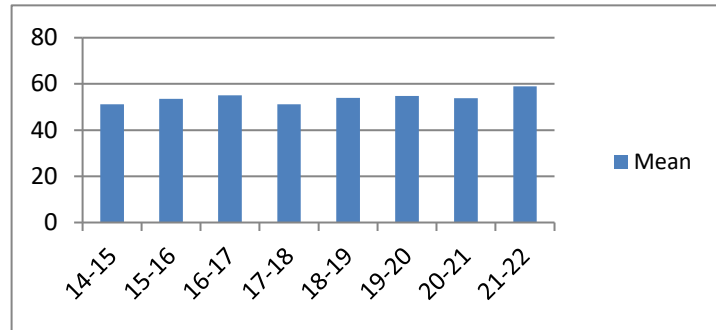
**Average Incarceration Length - Schedule II Cocaine  
< 1/2 Gram - All Offenders**

Fiscal Year	Mean	Median	Standard Deviation	N
14-15	58.63	60.00	25.13	276
15-16	68.87	72.00	33.68	180
16-17	60.91	60.00	24.11	151
17-18	58.96	48.00	24.20	135
18-19	60.94	60.00	26.69	127
19-20	60.00	60.00	21.06	69
20-21	60.19	60.00	22.11	63
21-22	61.65	72.00	17.14	51



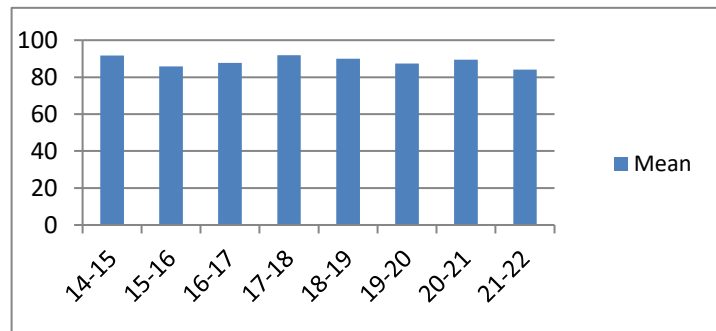
**Average Incarceration Length - Schedule II Cocaine  
< 1/2 Gram - Standard Offenders**

Fiscal Year	Mean	Median	Standard Deviation	N
14-15	51.22	48.00	14.92	231
15-16	53.52	48.00	17.54	124
16-17	55.13	54.00	18.59	127
17-18	51.15	48.00	15.42	111
18-19	53.98	48.00	15.77	108
19-20	54.81	48.00	15.77	59
20-21	53.76	48.00	16.44	50
21-22	58.93	60.00	15.10	45



**Average Incarceration Length - Schedule II Cocaine  
< 1/2 Gram - Multiple Offenders**

Fiscal Year	Mean	Median	Standard Deviation	N
14-15	91.66	84.00	18.35	29
15-16	85.80	72.00	21.32	40
16-17	87.65	84.00	19.96	23
17-18	91.85	90.00	24.04	20
18-19	90.00	84.00	20.78	12
19-20	87.33	78.00	21.86	9
20-21	89.45	84.00	23.62	11
21-22	84.00	72.00	20.78	5

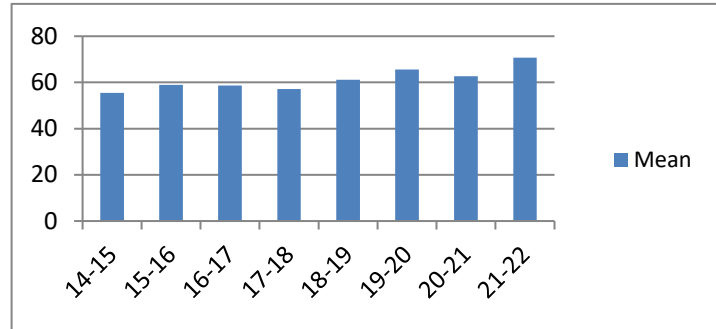


## Average Incarceration Lengths in Months by Felony Class and Offense

Note: Column N indicates the number of felony convictions. Individual offenders can have multiple convictions. Incarceration includes life without parole and death sentences. Probation includes sentences to community corrections.

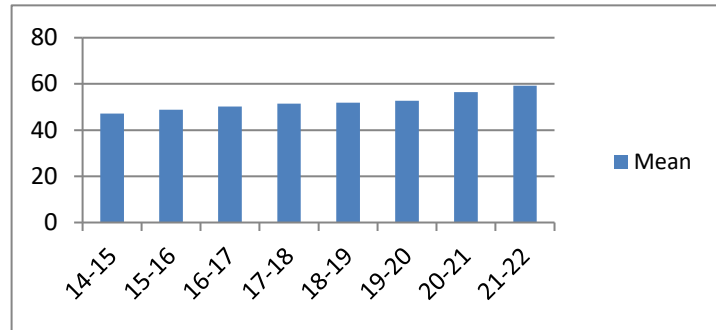
### Average Incarceration Length - Schedule II Drugs: Max \$100,000 Fine - All Offenders

Fiscal Year	Mean	Median	Standard Deviation	N
14-15	55.53	48.00	31.30	645
15-16	59.00	48.00	25.51	502
16-17	58.73	48.00	25.71	488
17-18	57.12	48.00	22.77	457
18-19	61.18	54.00	28.23	398
19-20	65.57	72.00	27.27	154
20-21	62.74	72.00	24.28	127
21-22	70.79	72.00	31.29	232



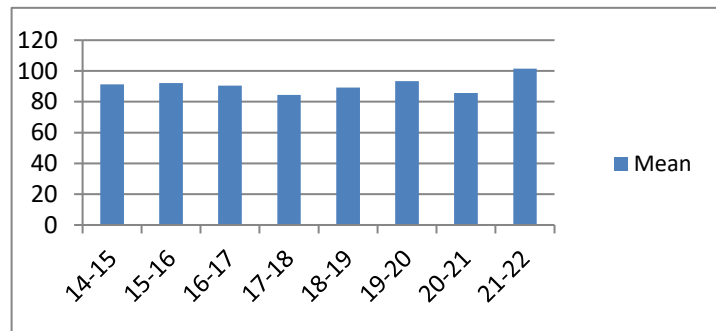
### Average Incarceration Length - Schedule II Drugs: Max \$100,000 Fine - Standard Offenders

Fiscal Year	Mean	Median	Standard Deviation	N
14-15	47.23	36.00	15.28	556
15-16	48.86	48.00	13.64	392
16-17	50.18	48.00	15.74	399
17-18	51.47	48.00	15.88	386
18-19	51.92	48.00	17.71	322
19-20	52.68	48.00	16.19	109
20-21	56.42	60.00	18.21	104
21-22	59.20	60.00	18.01	178



### Average Incarceration Length - Schedule II Drugs: Max \$100,000 Fine - Multiple Offenders

Fiscal Year	Mean	Median	Standard Deviation	N
14-15	91.30	96.00	21.39	71
15-16	92.25	84.00	21.15	102
16-17	90.56	96.00	22.26	75
17-18	84.55	72.00	25.93	65
18-19	89.31	90.00	19.51	61
19-20	93.37	96.00	19.26	41
20-21	85.71	72.00	19.82	21
21-22	101.59	96.00	30.82	44

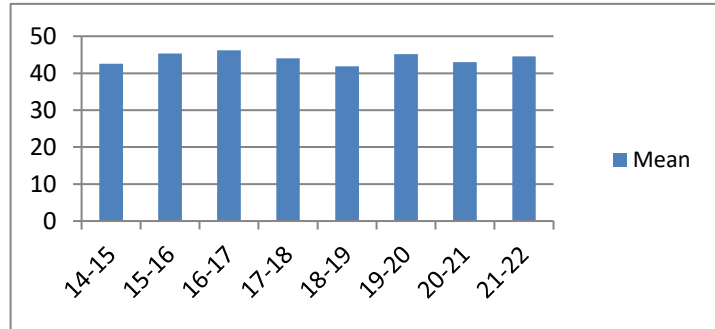


## Average Incarceration Lengths in Months by Felony Class and Offense

Note: Column N indicates the number of felony convictions. Individual offenders can have multiple convictions. Incarceration includes life without parole and death sentences. Probation includes sentences to community corrections.

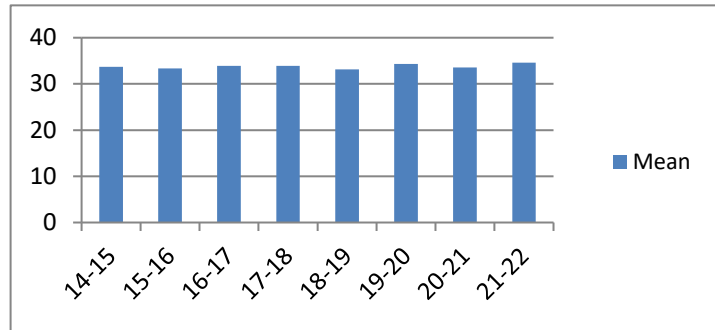
**Average Incarceration Length - Class D -  
All Offenders**

Fiscal Year	Mean	Median	Standard Deviation	N
14-15	42.56	36.00	23.87	6,125
15-16	45.34	36.00	26.53	5,108
16-17	46.21	36.00	26.97	4,179
17-18	44.02	36.00	25.42	4,115
18-19	41.90	36.00	23.84	3,877
19-20	45.12	36.00	26.74	2,434
20-21	42.96	36.00	24.68	1,965
21-22	44.56	36.00	25.34	2,543



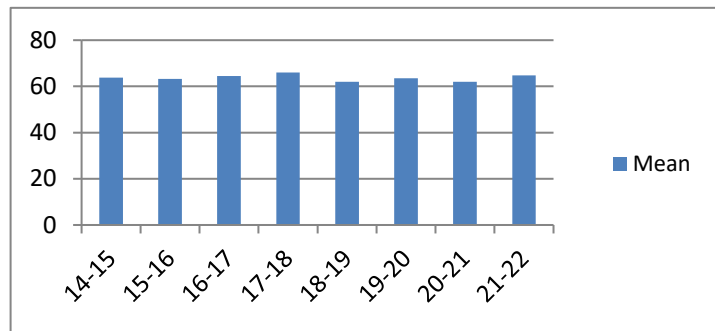
**Average Incarceration Length - Class D -  
Standard Offenders**

Fiscal Year	Mean	Median	Standard Deviation	N
14-15	33.71	36.00	10.66	4,820
15-16	33.34	36.00	10.17	3,658
16-17	33.90	36.00	11.00	2,981
17-18	33.94	36.00	10.70	3,162
18-19	33.11	30.00	10.36	3,033
19-20	34.33	36.00	11.93	1,816
20-21	33.53	36.00	11.75	1,488
21-22	34.61	36.00	12.34	1,910



**Average Incarceration Length - Class D -  
Multiple Offenders**

Fiscal Year	Mean	Median	Standard Deviation	N
14-15	63.86	60.00	18.58	982
15-16	63.23	60.00	18.13	1,092
16-17	64.51	60.00	18.73	908
17-18	65.96	60.00	19.23	708
18-19	62.03	60.00	18.55	650
19-20	63.45	60.00	18.54	442
20-21	62.00	60.00	18.43	367
21-22	64.76	60.00	19.97	479

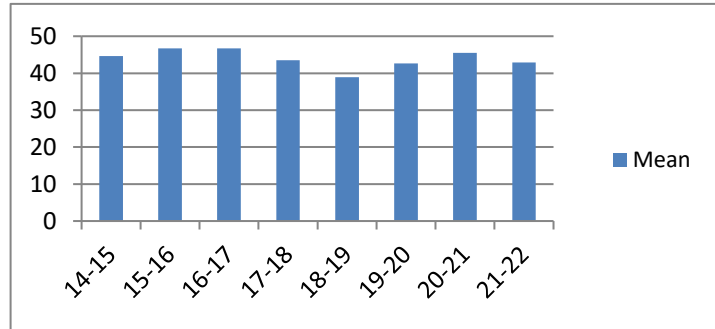


## Average Incarceration Lengths in Months by Felony Class and Offense

Note: Column N indicates the number of felony convictions. Individual offenders can have multiple convictions. Incarceration includes life without parole and death sentences. Probation includes sentences to community corrections.

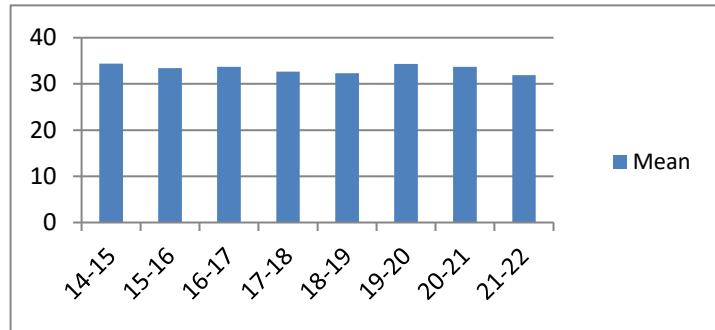
**Average Incarceration Length - Theft:  
\$1,000 to \$10,000 - All Offenders**

Fiscal Year	Mean	Median	Standard Deviation	N
14-15	44.66	36.00	25.53	2,113
15-16	46.73	36.00	27.69	1,813
16-17	46.75	36.00	26.84	1,284
17-18	43.49	36.00	25.93	679
18-19	38.93	36.00	20.97	271
19-20	42.65	36.00	23.69	150
20-21	45.48	48.00	26.28	69
21-22	42.90	36.00	25.77	92



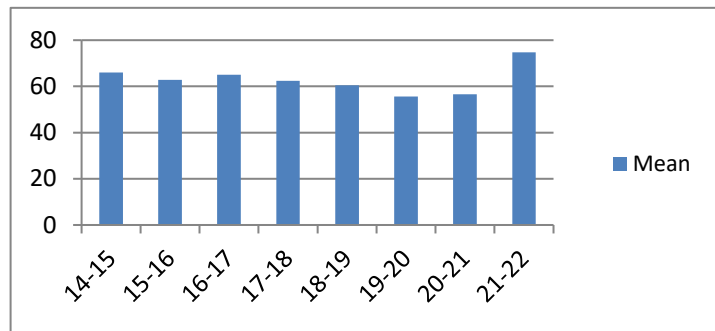
**Average Incarceration Length - Theft:  
\$1,000 to \$10,000 - Standard Offenders**

Fiscal Year	Mean	Median	Standard Deviation	N
14-15	34.38	36.00	11.24	1,606
15-16	33.43	36.00	10.24	1,233
16-17	33.72	36.00	10.85	888
17-18	32.69	24.00	11.31	503
18-19	32.34	24.00	11.20	218
19-20	34.33	36.00	10.44	114
20-21	33.73	36.00	10.34	45
21-22	31.88	24.03	9.96	73



**Average Incarceration Length - Theft:  
\$1,000 to \$10,000 - Multiple Offenders**

Fiscal Year	Mean	Median	Standard Deviation	N
14-15	66.02	60.00	19.53	381
15-16	62.79	60.00	18.86	451
16-17	65.01	60.00	19.20	304
17-18	62.44	48.00	20.94	128
18-19	60.53	48.00	19.48	45
19-20	55.56	48.00	17.66	27
20-21	56.57	48.00	14.77	21
21-22	74.77	72.00	17.77	13

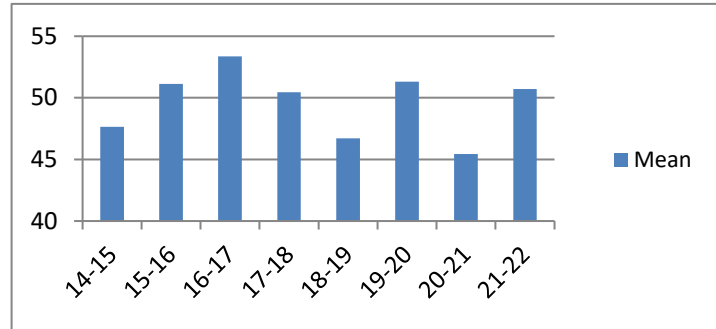


## Average Incarceration Lengths in Months by Felony Class and Offense

Note: Column N indicates the number of felony convictions. Individual offenders can have multiple convictions. Incarceration includes life without parole and death sentences. Probation includes sentences to community corrections.

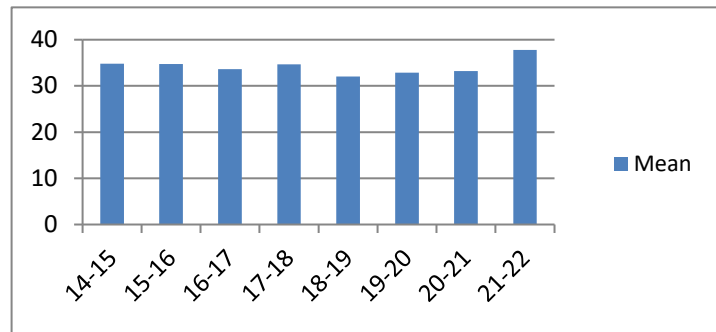
### Average Incarceration Length - Burglary Other Than Habitation - All Offenders

Fiscal Year	Mean	Median	Standard Deviation	N
14-15	47.64	48.00	28.30	817
15-16	51.13	48.00	30.04	691
16-17	53.37	48.00	32.46	654
17-18	50.45	48.00	30.12	756
18-19	46.70	36.00	29.69	780
19-20	51.30	48.00	31.24	456
20-21	45.43	36.00	27.27	432
21-22	50.71	48.00	28.04	426



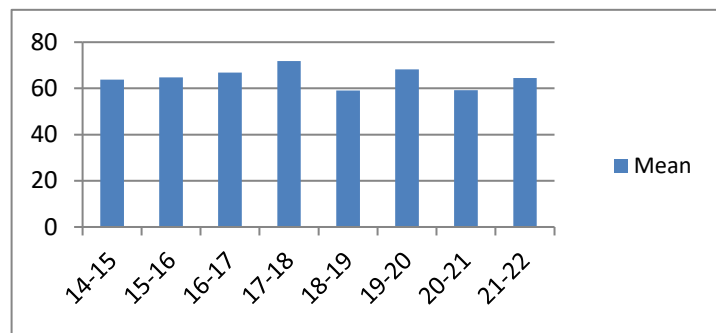
### Average Incarceration Length - Burglary Other Than Habitation - Standard Offenders

Fiscal Year	Mean	Median	Standard Deviation	N
14-15	34.84	36.00	11.15	588
15-16	34.75	36.00	10.82	439
16-17	33.62	36.00	10.40	391
17-18	34.68	36.00	10.72	513
18-19	32.02	24.03	9.80	521
19-20	32.88	24.00	11.31	280
20-21	33.20	36.00	11.66	304
21-22	37.80	36.00	15.87	284



### Average Incarceration Length - Burglary Other Than Habitation - Multiple Offenders

Fiscal Year	Mean	Median	Standard Deviation	N
14-15	63.84	60.00	17.09	149
15-16	64.70	60.00	17.65	184
16-17	66.83	60.00	18.76	185
17-18	71.90	72.00	19.89	174
18-19	59.07	48.00	16.06	183
19-20	68.28	72.00	18.71	131
20-21	59.17	48.00	16.05	94
21-22	64.51	60.00	19.23	105

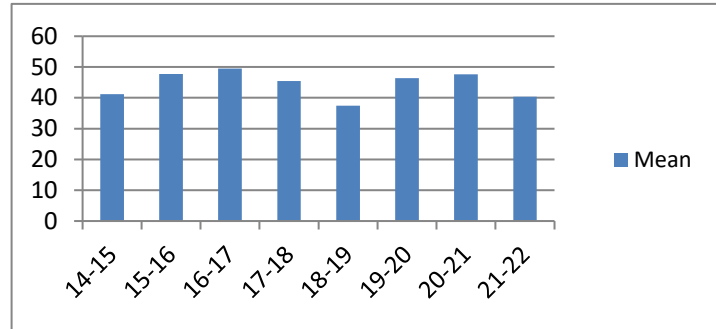


## Average Incarceration Lengths in Months by Felony Class and Offense

Note: Column N indicates the number of felony convictions. Individual offenders can have multiple convictions. Incarceration includes life without parole and death sentences. Probation includes sentences to community corrections.

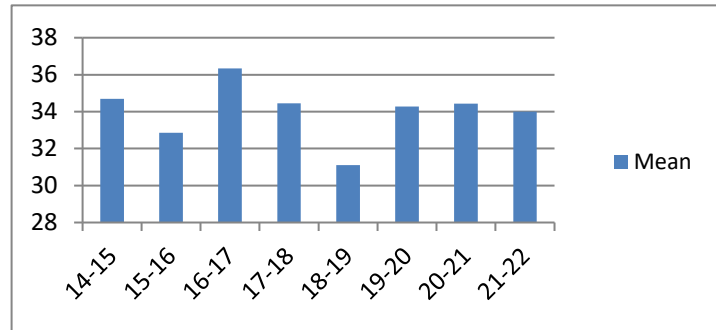
**Average Incarceration Length -  
Identity Theft - All Offenders**

Fiscal Year	Mean	Median	Standard Deviation	N
14-15	41.19	36.00	19.04	433
15-16	47.71	48.00	26.66	343
16-17	49.53	48.00	26.42	330
17-18	45.48	36.00	27.17	291
18-19	37.47	24.03	20.64	326
19-20	46.42	36.00	27.66	144
20-21	47.61	39.00	29.90	92
21-22	40.41	36.00	15.71	126



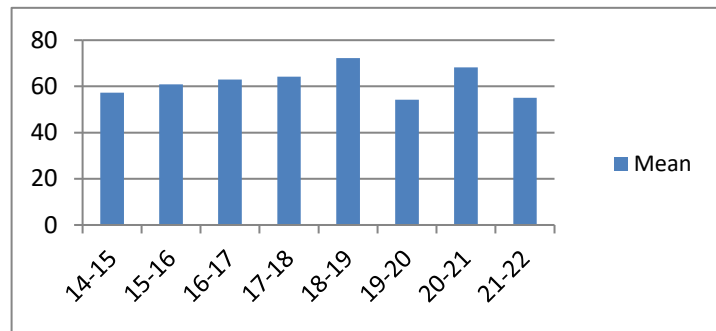
**Average Incarceration Length -  
Identity Theft - Standard Offenders**

Fiscal Year	Mean	Median	Standard Deviation	N
14-15	34.70	36.00	9.79	341
15-16	32.85	24.03	10.16	217
16-17	36.34	36.00	10.74	213
17-18	34.45	36.00	10.52	217
18-19	31.11	24.00	9.35	282
19-20	34.28	36.00	13.04	97
20-21	34.43	36.00	10.48	69
21-22	34.00	36.00	9.95	88



**Average Incarceration Length -  
Identity Theft - Multiple Offenders**

Fiscal Year	Mean	Median	Standard Deviation	N
14-15	57.32	48.00	17.59	76
15-16	60.92	60.00	13.88	91
16-17	63.03	60.00	18.02	95
17-18	64.25	72.00	17.08	55
18-19	72.31	72.00	20.87	39
19-20	54.18	48.00	14.73	33
20-21	68.25	72.00	16.23	16
21-22	55.00	48.00	14.73	36

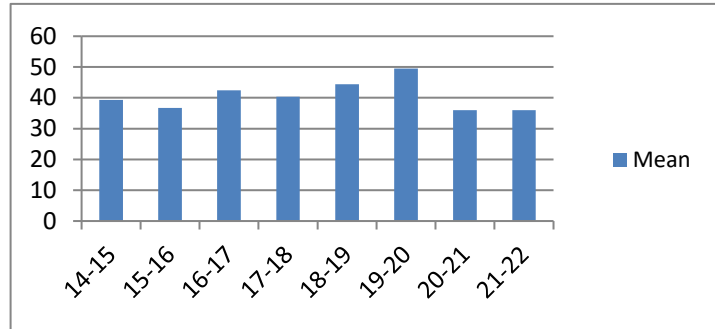


## Average Incarceration Lengths in Months by Felony Class and Offense

Note: Column N indicates the number of felony convictions. Individual offenders can have multiple convictions. Incarceration includes life without parole and death sentences. Probation includes sentences to community corrections.

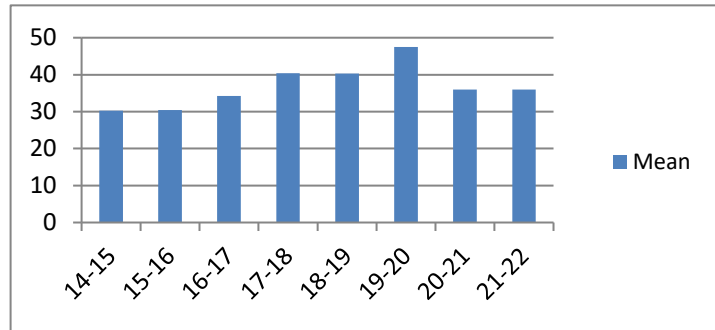
**Average Incarceration Length -  
Obtain Drugs by Fraud - All Offenders**

Fiscal Year	Mean	Median	Standard Deviation	N
14-15	39.32	30.02	22.19	134
15-16	36.69	36.00	18.62	176
16-17	42.45	36.00	22.79	40
17-18	40.40	48.00	10.36	60
18-19	44.44	36.00	16.58	27
19-20	49.47	48.00	12.40	49
20-21	36.00	36.00	.	1
21-22	36.00	36.00	.	1



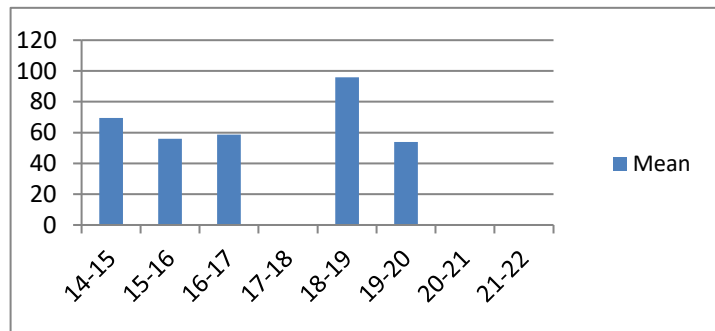
**Average Incarceration Length -  
Obtain Drugs by Fraud - Standard Offenders**

Fiscal Year	Mean	Median	Standard Deviation	N
14-15	30.28	24.00	8.58	109
15-16	30.41	24.03	7.17	150
16-17	34.20	36.00	8.21	30
17-18	40.40	48.00	10.36	60
18-19	40.32	36.00	7.65	25
19-20	47	48	2	46
20-21	36.00	36.00	.	1
21-22	36.00	36.00	.	1



**Average Incarceration Length -  
Obtain Drugs by Fraud - Multiple Offenders**

Fiscal Year	Mean	Median	Standard Deviation	N
14-15	69.47	72.00	11.01	19
15-16	56.00	48.00	14.10	15
16-17	58.67	48.00	21.17	9
17-18	.	.	.	0
18-19	96.00	96.00	0.00	2
19-20	54	54	8	2
20-21	.	.	.	0
21-22	.	.	.	0

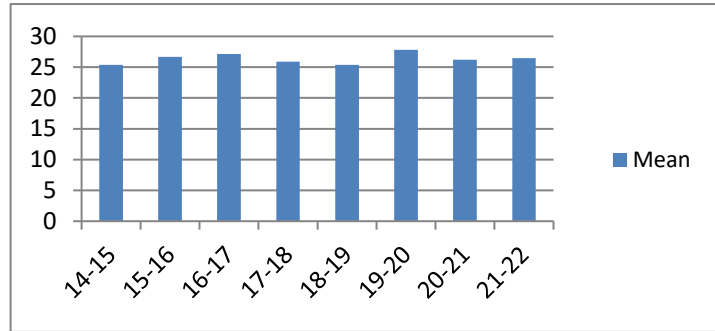


## Average Incarceration Lengths in Months by Felony Class and Offense

Note: Column N indicates the number of felony convictions. Individual offenders can have multiple convictions. Incarceration includes life without parole and death sentences. Probation includes sentences to community corrections.

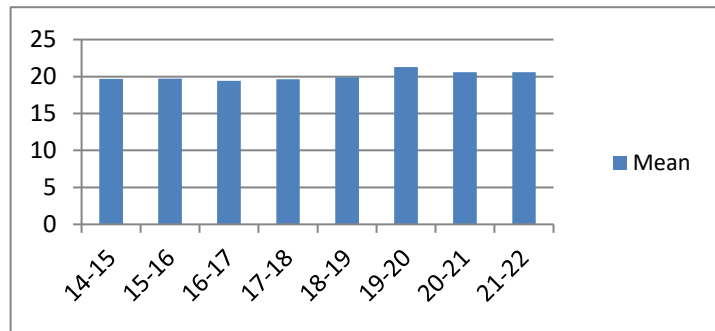
**Average Incarceration Length - Class E -  
All Offenders**

Fiscal Year	Mean	Median	Standard Deviation	N
14-15	25.38	24.00	13.88	6,443
15-16	26.70	24.00	14.58	5,641
16-17	27.16	24.00	15.12	5,077
17-18	25.89	24.00	14.39	5,952
18-19	25.39	24.00	13.92	5,305
19-20	27.83	24.00	15.18	3,016
20-21	26.20	24.00	14.04	2,333
21-22	26.47	24.00	14.16	2,746



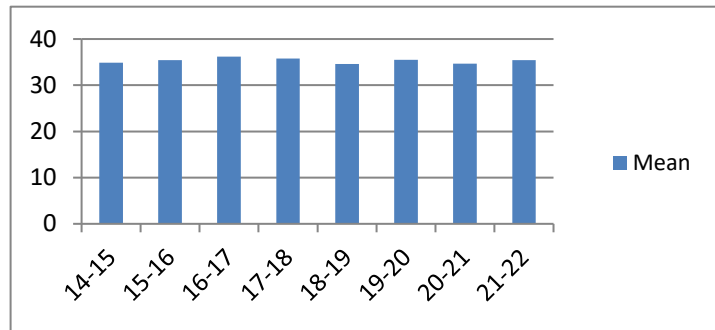
**Average Incarceration Length - Class E -  
Standard Offenders**

Fiscal Year	Mean	Median	Standard Deviation	N
14-15	19.67	24.00	6.92	4,718
15-16	19.72	24.00	6.37	3,808
16-17	19.43	24.00	6.29	3,388
17-18	19.62	24.00	6.43	4,355
18-19	19.89	24.00	6.59	3,966
19-20	21.29	24.00	7.82	2,131
20-21	20.59	24.00	7.41	1,680
21-22	20.58	24.00	6.75	1,995



**Average Incarceration Length - Class E -  
Multiple Offenders**

Fiscal Year	Mean	Median	Standard Deviation	N
14-15	34.88	36.00	10.55	1,304
15-16	35.46	36.00	11.32	1,399
16-17	36.21	36.00	11.05	1,217
17-18	35.76	36.00	10.23	1,146
18-19	34.58	36.00	10.70	989
19-20	35.52	36.00	10.25	628
20-21	34.66	36.00	10.44	495
21-22	35.43	36.00	10.61	559



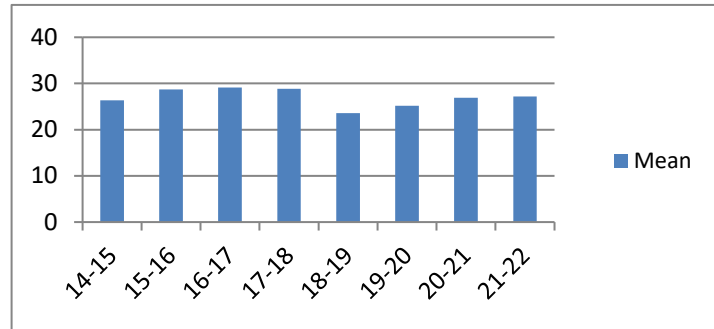


## Average Incarceration Lengths in Months by Felony Class and Offense

Note: Column N indicates the number of felony convictions. Individual offenders can have multiple convictions. Incarceration includes life without parole and death sentences. Probation includes sentences to community corrections.

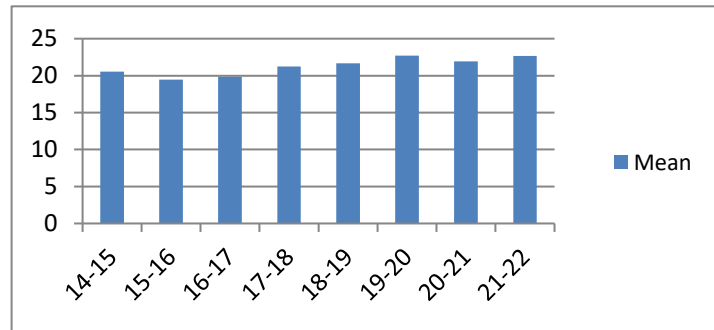
**Average Incarceration Length -  
Forgery: Up to \$1,000 - All Offenders**

Fiscal Year	Mean	Median	Standard Deviation	N
14-15	26.38	24.00	13.48	677
15-16	28.69	24.00	15.67	536
16-17	29.10	24.00	15.66	564
17-18	28.82	24.00	16.41	385
18-19	23.56	24.00	7.47	238
19-20	25.15	24.00	8.71	206
20-21	26.94	24.00	11.45	95
21-22	27.17	24.00	12.92	53



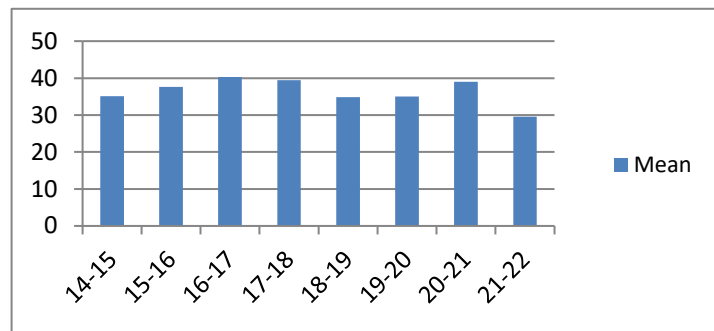
**Average Incarceration Length -  
Forgery: Up to \$1,000 - Standard Offenders**

Fiscal Year	Mean	Median	Standard Deviation	N
14-15	20.55	24.00	5.60	494
15-16	19.45	24.00	6.33	338
16-17	19.84	24.00	5.68	361
17-18	21.24	24.00	7.18	284
18-19	21.67	24.00	4.70	205
19-20	22.72	24.00	5.29	180
20-21	21.92	24.00	4.95	72
21-22	22.67	24.00	8.00	36



**Average Incarceration Length -  
Forgery: Up to \$1,000 - Multiple Offenders**

Fiscal Year	Mean	Median	Standard Deviation	N
14-15	35.11	36.00	10.64	131
15-16	37.60	36.00	9.35	139
16-17	40.32	48.00	11.71	135
17-18	39.45	36.00	8.09	66
18-19	34.88	36.00	10.27	32
19-20	35.00	36.00	9.52	12
20-21	39.00	36.00	6.56	19
21-22	29.54	24.00	9.32	13

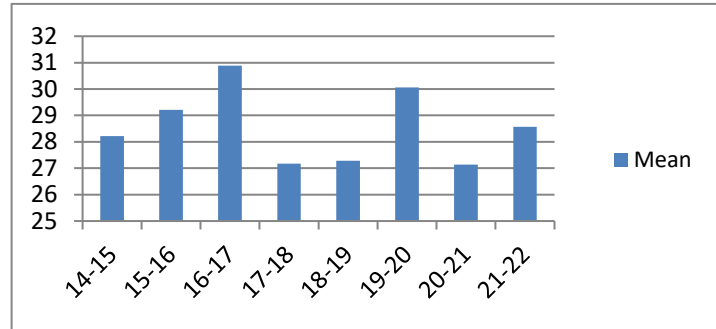


## Average Incarceration Lengths in Months by Felony Class and Offense

Note: Column N indicates the number of felony convictions. Individual offenders can have multiple convictions. Incarceration includes life without parole and death sentences. Probation includes sentences to community corrections.

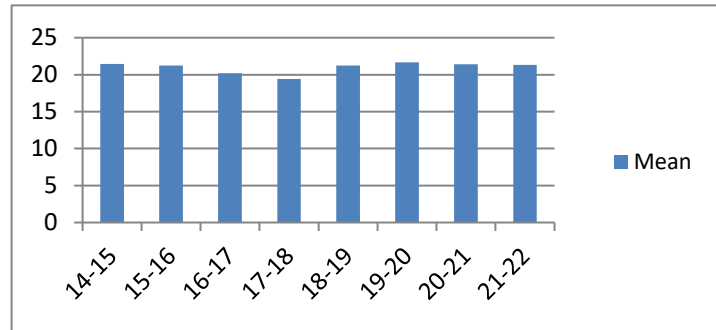
**Average Incarceration Length - Burglary:  
Auto - All Offenders**

Fiscal Year	Mean	Median	Standard Deviation	N
14-15	28.22	24.00	15.70	980
15-16	29.21	24.00	14.93	802
16-17	30.88	24.00	17.91	604
17-18	27.17	24.00	16.48	911
18-19	27.28	24.00	15.08	736
19-20	30.06	24.00	16.87	436
20-21	27.14	24.00	13.66	377
21-22	28.57	24.00	14.32	316



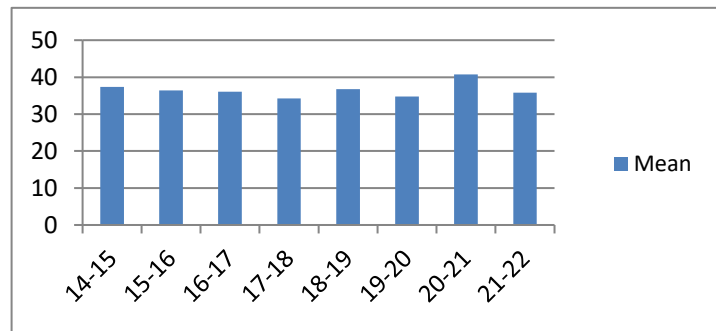
**Average Incarceration Length - Burglary:  
Auto - Standard Offenders**

Fiscal Year	Mean	Median	Standard Deviation	N
14-15	21.43	24.00	8.65	700
15-16	21.25	24.00	5.59	490
16-17	20.19	24.00	6.33	358
17-18	19.42	24.00	5.84	651
18-19	21.23	24.00	7.67	545
19-20	21.66	24.00	4.65	303
20-21	21.40	24.00	5.53	289
21-22	21.32	24.00	5.35	213



**Average Incarceration Length - Burglary:  
Auto - Multiple Offenders**

Fiscal Year	Mean	Median	Standard Deviation	N
14-15	37.39	36.00	10.59	193
15-16	36.37	36.00	12.99	248
16-17	36.05	36.00	10.70	152
17-18	34.22	36.00	10.58	145
18-19	36.73	36.00	10.92	135
19-20	34.73	36.00	9.62	71
20-21	40.76	48.00	9.18	58
21-22	35.78	36.00	10.27	68

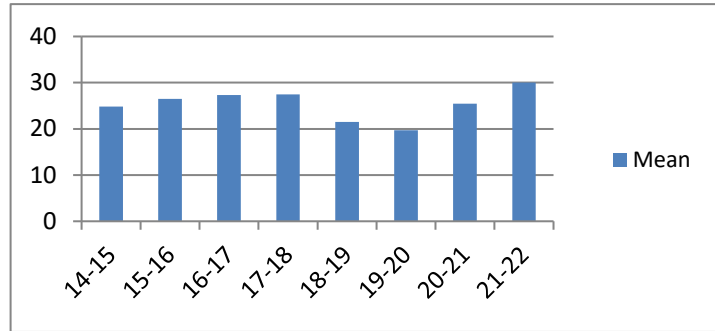


## Average Incarceration Lengths in Months by Felony Class and Offense

Note: Column N indicates the number of felony convictions. Individual offenders can have multiple convictions. Incarceration includes life without parole and death sentences. Probation includes sentences to community corrections.

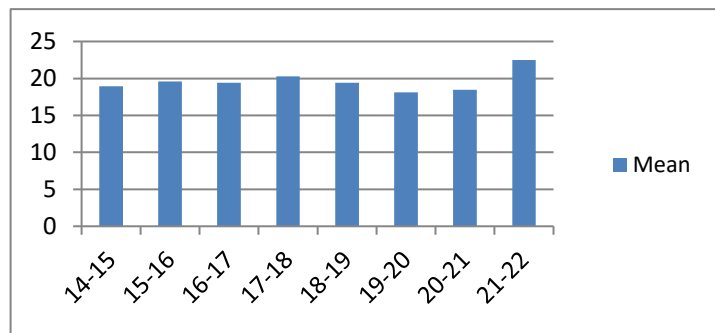
**Average Incarceration Length -  
Theft: \$500 - \$1,000 - All Offenders**

Fiscal Year	Mean	Median	Standard Deviation	N
14-15	24.80	24.00	14.31	937
15-16	26.46	24.00	14.64	823
16-17	27.34	24.00	15.20	675
17-18	27.49	24.00	14.98	353
18-19	21.51	24.00	9.30	164
19-20	19.68	24.00	8.91	57
20-21	25.45	24.00	16.91	33
21-22	30.00	24.00	18.11	10



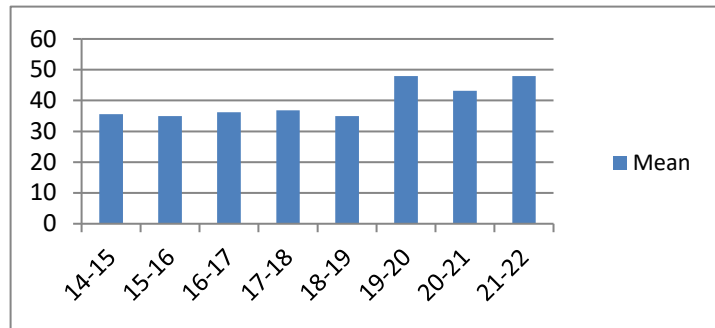
**Average Incarceration Length -  
Theft: \$500 - \$1,000 - Standard Offenders**

Fiscal Year	Mean	Median	Standard Deviation	N
14-15	18.92	24.00	6.16	707
15-16	19.61	24.00	6.01	565
16-17	19.43	24.00	6.39	450
17-18	20.29	24.00	7.25	242
18-19	19.40	24.00	5.79	145
19-20	18.11	21.00	6.00	54
20-21	18.46	18.00	6.98	26
21-22	22.50	24.00	7.69	8



**Average Incarceration Length -  
Theft: \$500 - \$1,000 - Multiple Offenders**

Fiscal Year	Mean	Median	Standard Deviation	N
14-15	35.53	36.00	10.67	164
15-16	34.97	36.00	12.26	193
16-17	36.23	36.00	10.46	162
17-18	36.80	36.00	11.08	83
18-19	34.94	36.00	12.04	17
19-20	48.00	48.00	0.00	3
20-21	43.20	48.00	13.68	5
21-22	48.00	48.00	.	1

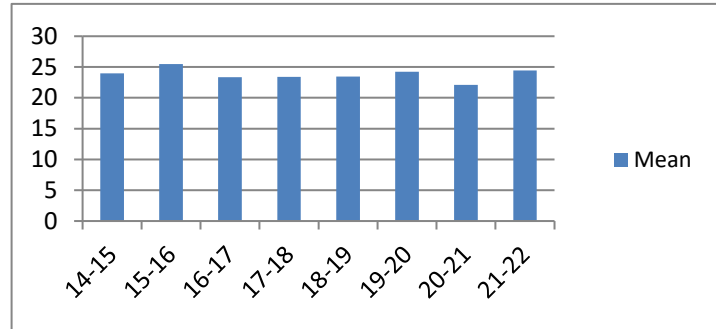


## Average Incarceration Lengths in Months by Felony Class and Offense

Note: Column N indicates the number of felony convictions. Individual offenders can have multiple convictions. Incarceration includes life without parole and death sentences. Probation includes sentences to community corrections.

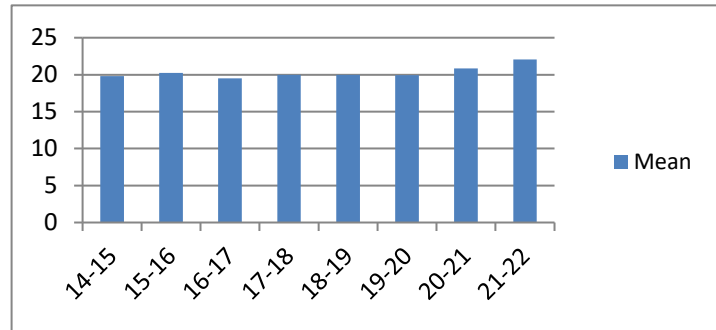
### Average Incarceration Length - Schedule VI Drugs: Not < 1/2 Ounce - All Offenders

Fiscal Year	Mean	Median	Standard Deviation	N
14-15	23.95	24.00	11.19	553
15-16	25.46	24.00	12.96	400
16-17	23.34	24.00	11.35	288
17-18	23.42	24.00	10.91	342
18-19	23.44	24.00	12.04	324
19-20	24.23	24.00	12.26	150
20-21	22.11	24.00	7.06	95
21-22	24.46	24.00	9.90	142



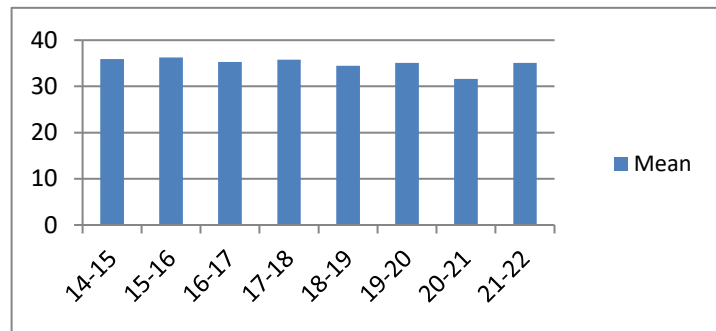
### Average Incarceration Length - Schedule VI Drugs: Not < 1/2 Ounce - Standard Offenders

Fiscal Year	Mean	Median	Standard Deviation	N
14-15	19.81	24.00	6.15	428
15-16	20.24	24.00	6.19	288
16-17	19.52	24.00	6.05	230
17-18	19.98	24.00	6.08	282
18-19	19.99	24.00	6.74	273
19-20	19.92	24.00	6.18	118
20-21	20.86	24.00	5.30	84
21-22	22.07	24.00	7.89	115



### Average Incarceration Length - Schedule VI Drugs: Not < 1/2 Ounce - Multiple Offenders

Fiscal Year	Mean	Median	Standard Deviation	N
14-15	35.95	36.00	10.25	111
15-16	36.26	36.00	10.99	91
16-17	35.27	36.00	10.72	49
17-18	35.75	36.00	10.20	48
18-19	34.46	36.00	9.90	39
19-20	35.11	36.00	10.49	27
20-21	31.64	36.00	11.09	11
21-22	35.08	36.00	11.22	26

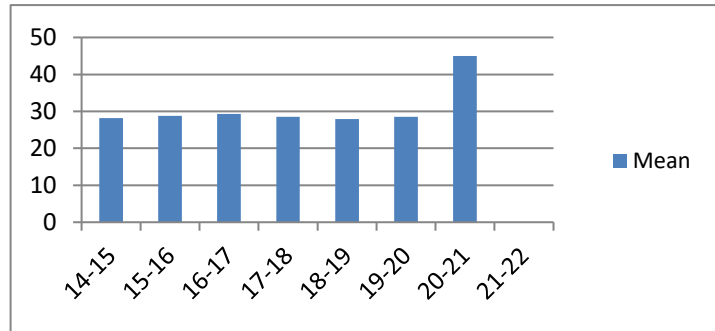


## Average Incarceration Lengths in Months by Felony Class and Offense

Note: Column N indicates the number of felony convictions. Individual offenders can have multiple convictions. Incarceration includes life without parole and death sentences. Probation includes sentences to community corrections.

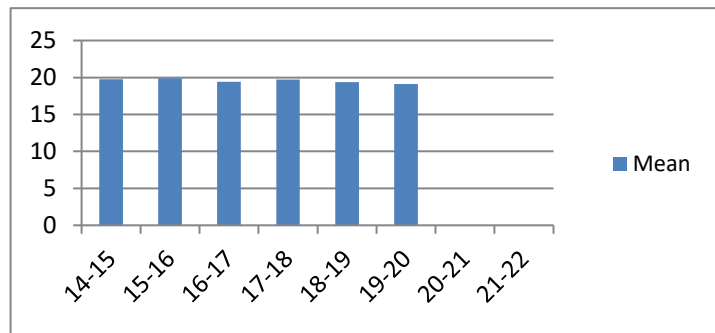
**Average Incarceration Length -  
Habitual Traffic Offender - All Offenders**

Fiscal Year	Mean	Median	Standard Deviation	N
14-15	28.15	24.00	14.41	324
15-16	28.77	24.00	15.27	297
16-17	29.33	24.00	15.61	278
17-18	28.49	24.00	14.20	263
18-19	27.93	24.00	15.23	231
19-20	28.50	24.00	15.20	28
20-21	45.00	45.00	12.73	2
21-22	.	.	.	0



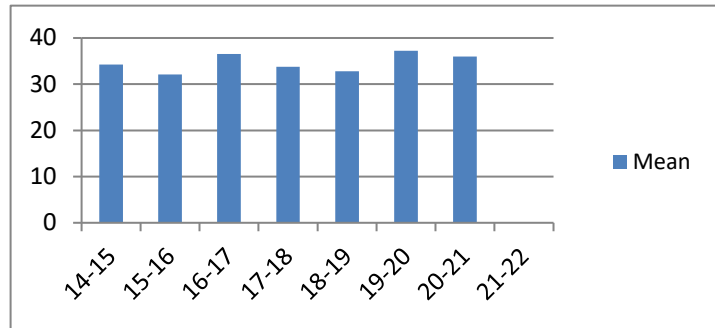
**Average Incarceration Length -  
Habitual Traffic Offender - Standard Offenders**

Fiscal Year	Mean	Median	Standard Deviation	N
14-15	19.76	24.00	6.40	186
15-16	19.88	24.00	5.47	161
16-17	19.43	24.00	5.66	162
17-18	19.70	24.00	5.53	143
18-19	19.36	18.00	6.17	137
19-20	19.13	24.00	5.89	16
20-21	.	.	.	0
21-22	.	.	.	0



**Average Incarceration Length -  
Habitual Traffic Offender - Multiple Offenders**

Fiscal Year	Mean	Median	Standard Deviation	N
14-15	34.22	36.00	10.23	106
15-16	32.08	30.00	9.45	103
16-17	36.51	36.00	10.37	78
17-18	33.80	36.00	9.13	94
18-19	32.77	36.00	9.32	61
19-20	37.20	42.00	11.93	10
20-21	36.00	36.00	.	1
21-22	.	.	.	0

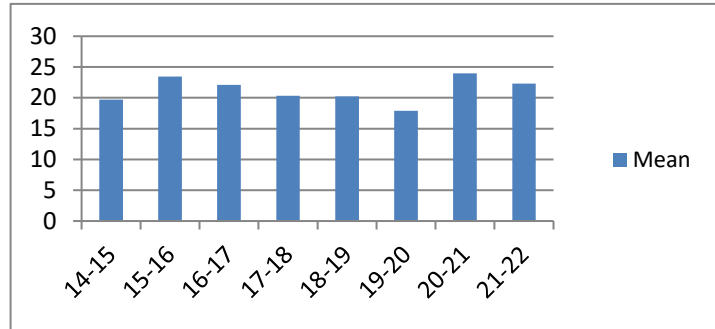


## Average Incarceration Lengths in Months by Felony Class and Offense

Note: Column N indicates the number of felony convictions. Individual offenders can have multiple convictions. Incarceration includes life without parole and death sentences. Probation includes sentences to community corrections.

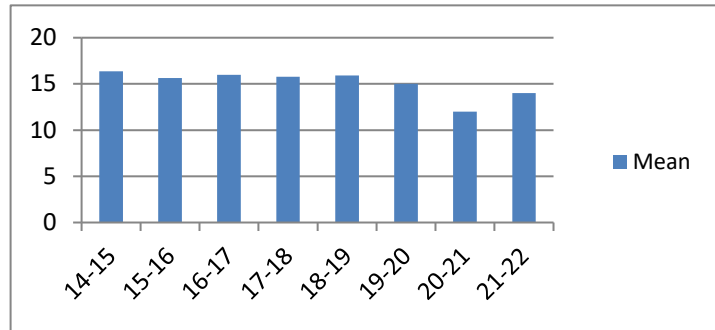
### Average Incarceration Length - Failure to Appear (Felony) - All Offenders

Fiscal Year	Mean	Median	Standard Deviation	N
14-15	19.70	18.00	10.38	385
15-16	23.47	24.00	15.68	324
16-17	22.12	18.00	13.81	385
17-18	20.33	12.00	12.35	482
18-19	20.22	12.00	13.02	453
19-20	17.87	12.00	11.36	38
20-21	24.00	12.00	24.00	6
21-22	22.29	12.00	22.37	7



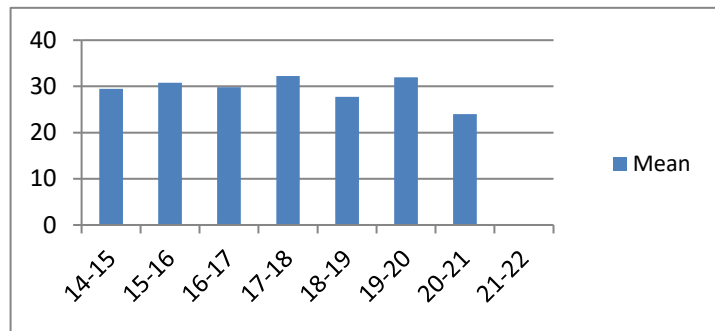
### Average Incarceration Length - Failure to Appear (Felony) - Standard Offenders

Fiscal Year	Mean	Median	Standard Deviation	N
14-15	16.37	12.00	5.50	311
15-16	15.64	12.00	5.36	212
16-17	15.97	12.00	5.67	276
17-18	15.79	12.00	5.32	382
18-19	15.90	12.00	5.56	365
19-20	15.03	12.00	5.16	34
20-21	12.00	12.00	0.00	4
21-22	14.00	12.00	4.90	6



### Average Incarceration Length - Failure to Appear (Felony) - Multiple Offenders

Fiscal Year	Mean	Median	Standard Deviation	N
14-15	29.50	24.00	8.71	64
15-16	30.80	24.00	9.77	83
16-17	29.84	24.00	9.06	79
17-18	32.25	24.00	10.12	80
18-19	27.74	24.00	7.99	61
19-20	32.00	36.00	6.93	3
20-21	24.00	24.00	.	1
21-22	.	.	.	0



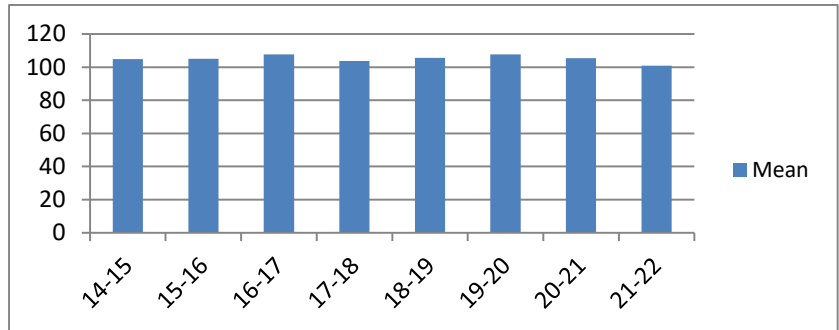
# Average Probation Lengths in Months by Felony Class

Note: Column N indicates the number of felony convictions. Individual offenders can have multiple convictions. Incarceration includes lifewithout parole and death sentences. Probation includes sentences to community corrections.

## Average Probation Length - Felony Class B - All Offenders

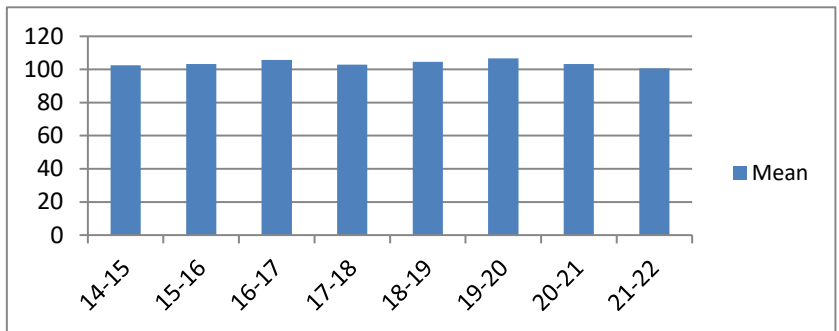
Fiscal Year	Mean	Median	Standard Deviation	N
14-15	104.82	96.00	19.60	526
15-16	105.00	96.00	17.24	392
16-17	107.65	96.00	23.12	351
17-18	103.69	96.00	16.50	636
18-19	105.62	96.00	17.41	820
19-20	107.73	96.00	21.57	649
20-21	105.40	96.00	19.13	847
21-22	100.94	96.00	14.04	1,007

included due to low occurrence frequencies.



## Average Probation Length - Felony Class B - Standard Offenders

Fiscal Year	Mean	Median	Standard Deviation	N
14-15	102.44	96.00	15.24	494
15-16	103.27	96.00	13.57	371
16-17	105.76	96.00	19.06	338
17-18	102.86	96.00	13.71	612
18-19	104.65	96.00	15.69	801
19-20	106.71	96.00	20.46	623
20-21	103.35	96.00	14.69	812
21-22	100.59	96.00	13.02	979



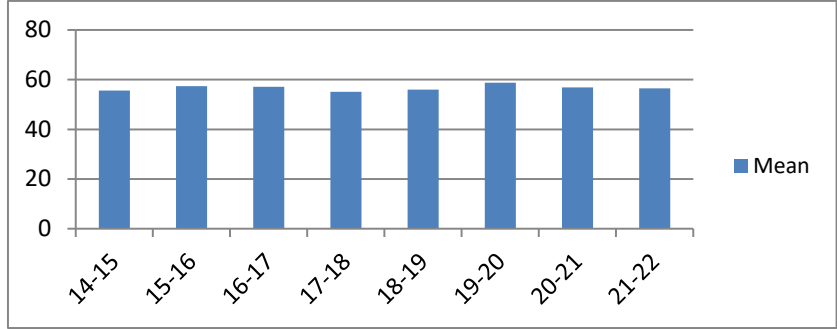
The table for multiple offenders was not included due to low occurrence frequencies.

# Average Probation Lengths in Months by Felony Class

Note: Column N indicates the number of felony convictions. Individual offenders can have multiple convictions. Incarceration includes lifewithout parole and death sentences. Probation includes sentences to community corrections.

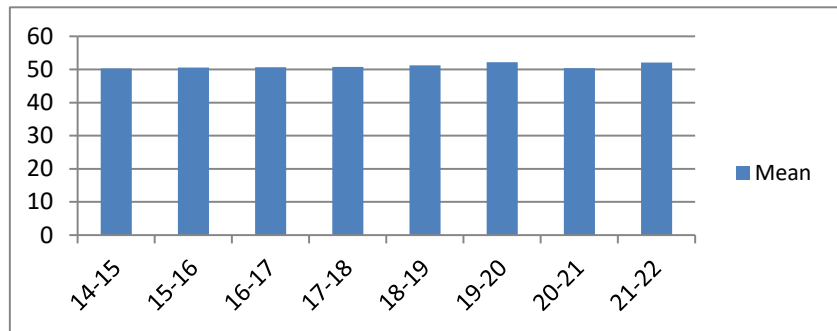
**Average Probation Length - Class C - All Offenders**

Fiscal Year	Mean	Median	Standard Deviation	N
14-15	55.61	48.00	23.27	2,072
15-16	57.34	48.00	24.59	1,788
16-17	57.15	48.00	23.53	1,839
17-18	55.15	48.00	21.14	2,625
18-19	55.94	48.00	22.46	2,722
19-20	58.78	54.00	22.76	1,992
20-21	56.82	48.00	23.22	2,211
21-22	56.50	48.00	20.81	3,212



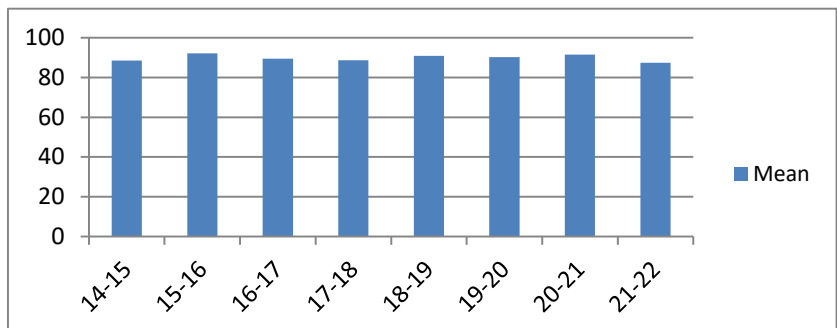
**Average Probation Length - Class C - Standard Offenders**

Fiscal Year	Mean	Median	Standard Deviation	N
14-15	50.26	48.00	17.75	1,800
15-16	50.53	48.00	17.09	1,502
16-17	50.66	48.00	16.53	1,559
17-18	50.78	48.00	16.18	2,342
18-19	51.21	48.00	17.49	2,416
19-20	52.18	48.00	16.23	1,651
20-21	50.36	48.00	15.91	1,884
21-22	52.07	48.00	16.29	2,814



**Average Probation Length - Class C - Multiple Offenders**

Fiscal Year	Mean	Median	Standard Deviation	N
14-15	88.45	84.00	22.65	230
15-16	92.08	96.00	18.35	227
16-17	89.52	96.00	21.96	243
17-18	88.64	84.00	21.25	253
18-19	90.87	96.00	20.91	276
19-20	90.23	90.00	20.94	310
20-21	91.50	96.00	20.42	282
21-22	87.34	84.00	20.47	358



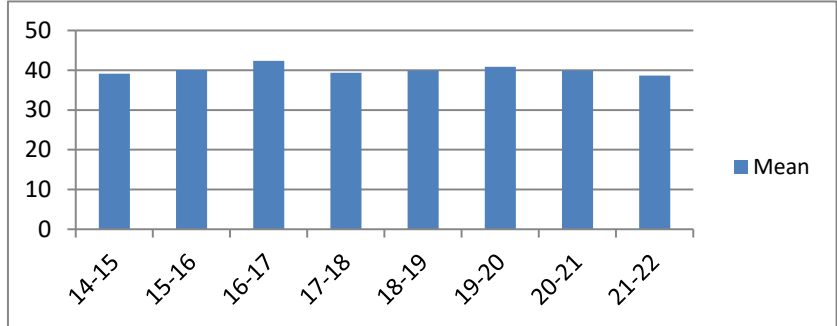


# Average Probation Lengths in Months by Felony Class

Note: Column N indicates the number of felony convictions. Individual offenders can have multiple convictions. Incarceration includes lifewithout parole and death sentences. Probation includes sentences to community corrections.

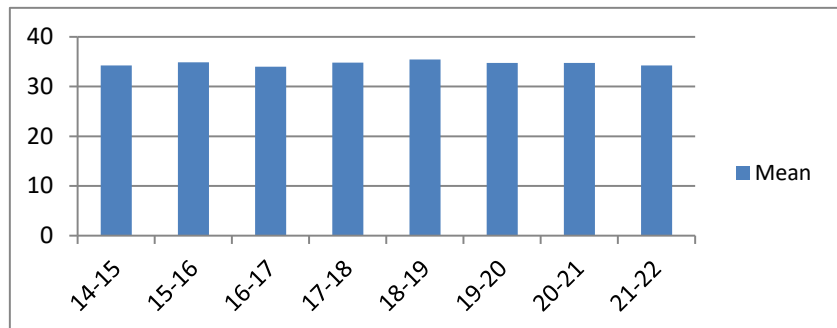
**Average Probation Length - Class D - All Offenders**

Fiscal Year	Mean	Median	Standard Deviation	N
14-15	39.13	36.00	19.63	3,122
15-16	40.06	36.00	19.86	2,144
16-17	42.38	36.00	23.09	2,057
17-18	39.39	36.00	18.45	2,603
18-19	39.91	36.00	21.01	2,483
19-20	40.88	36.00	20.93	1,665
20-21	39.89	36.00	19.76	1,909
21-22	38.65	36.00	17.19	2,669



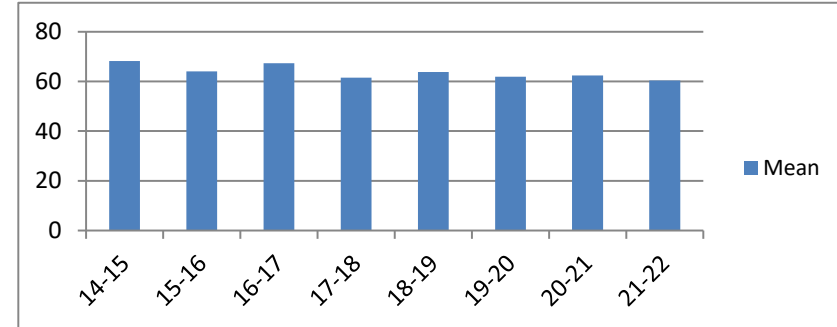
**Average Probation Length - Class D - Standard Offenders**

Fiscal Year	Mean	Median	Standard Deviation	N
14-15	34.24	36.00	12.51	2,729
15-16	34.90	36.00	13.44	1,824
16-17	34.02	36.00	11.94	1,644
17-18	34.81	36.00	11.53	2,256
18-19	35.48	36.00	15.70	2,174
19-20	34.78	36.00	12.72	1,381
20-21	34.76	36.00	11.93	1,641
21-22	34.22	36.00	11.31	2,277



**Average Probation Length - Class D - Multiple Offenders**

Fiscal Year	Mean	Median	Standard Deviation	N
14-15	68.17	66.00	22.03	336
15-16	64.04	60.00	19.91	268
16-17	67.36	72.00	19.60	325
17-18	61.56	60.00	18.33	286
18-19	63.80	60.00	20.36	256
19-20	61.91	48.00	20.56	223
20-21	62.40	60.00	18.14	212
21-22	60.39	60.00	17.15	339

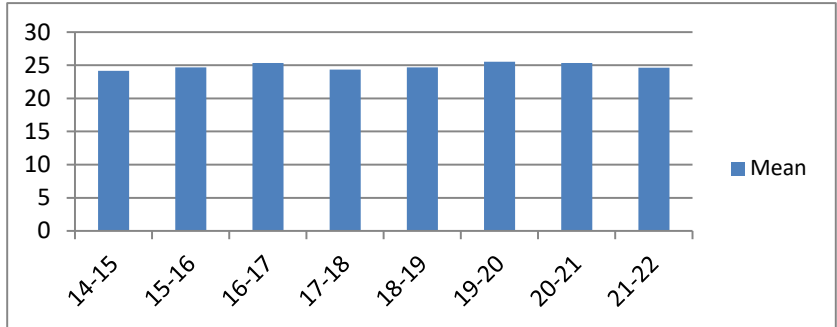


# Average Probation Lengths in Months by Felony Class

Note: Column N indicates the number of felony convictions. Individual offenders can have multiple convictions. Incarceration includes lifewithout parole and death sentences. Probation includes sentences to community corrections.

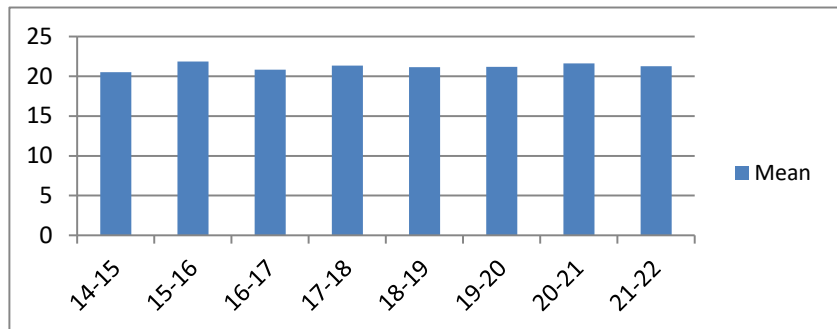
**Average Probation Length - Class E - All Offenders**

Fiscal Year	Mean	Median	Standard Deviation	N
14-15	24.18	24.00	13.95	3,433
15-16	24.67	24.00	12.39	2,713
16-17	25.36	24.00	14.37	2,517
17-18	24.35	24.00	13.36	3,564
18-19	24.70	24.00	14.11	3,624
19-20	25.53	24.00	13.44	2,219
20-21	25.33	24.00	12.65	1,991
21-22	24.65	24.00	11.56	3,134



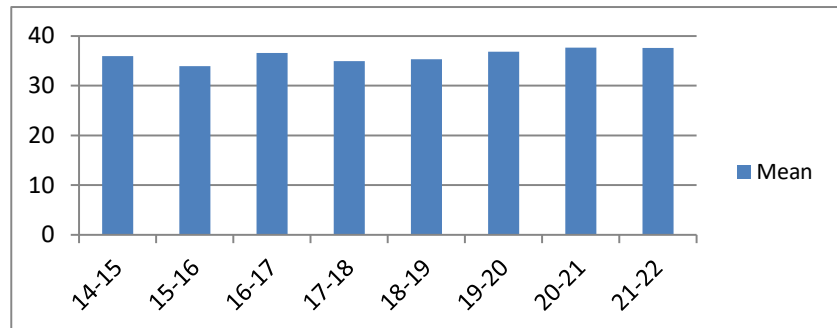
**Average Probation Length - Class E - Standard Offenders**

Fiscal Year	Mean	Median	Standard Deviation	N
14-15	20.50	24.00	10.12	2,817
15-16	21.84	24.00	8.88	2,268
16-17	20.83	24.00	9.34	2,003
17-18	21.35	24.00	9.58	3,031
18-19	21.14	24.00	9.98	3,022
19-20	21.20	24.00	7.84	1,790
20-21	21.64	24.00	7.62	1,667
21-22	21.27	24.00	7.17	2,622



**Average Probation Length - Class E - Multiple Offenders**

Fiscal Year	Mean	Median	Standard Deviation	N
14-15	35.94	36.00	10.60	476
15-16	33.93	36.00	10.68	368
16-17	36.62	36.00	10.66	394
17-18	34.94	36.00	11.35	411
18-19	35.33	36.00	10.57	453
19-20	36.84	36.00	10.35	298
20-21	37.65	36.00	10.35	225
21-22	37.61	36.00	10.63	393

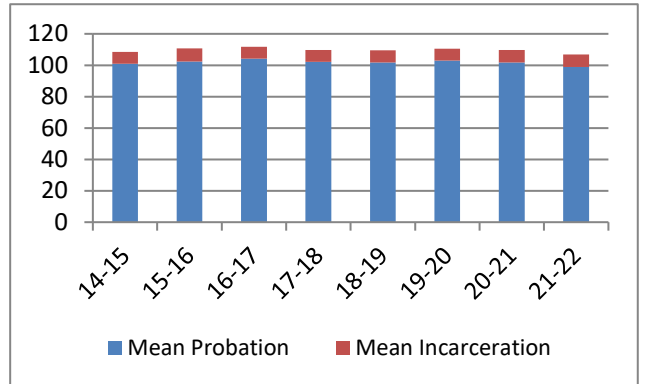


## Average Split Sentence Lengths in Months by Felony Class

Note: Column N indicates the number of felony convictions. Individual offenders can have multiple convictions. Incarceration includes life without parole and death sentences. Probation includes sentences to community corrections.

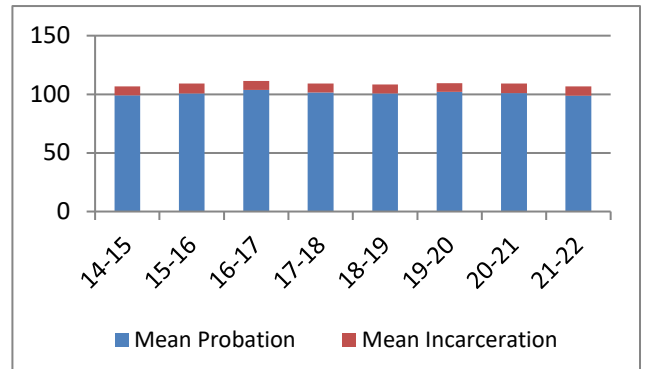
**Average Sentence Length - Felony Class B - All Offenders**

Fiscal Year	Months of Incarceration				Months of Probation			
	Mean	Median	Standard Deviation	N	Mean	Median	Standard Deviation	N
14-15	7.6	8.0	4.2	401	100.9	96.0	20.5	401
15-16	8.4	12.0	4.0	279	102.3	96.0	18.6	279
16-17	7.6	6.0	4.1	471	104.2	96.0	16.1	471
17-18	7.7	6.0	4.1	694	102.1	96.0	16.5	694
18-19	7.8	6.9	4.3	853	101.8	96.0	18.0	853
19-20	7.5	6.0	4.8	581	103.0	96.0	18.8	581
20-21	8.1	9.0	4.1	657	101.7	96.0	15.9	657
21-22	8.0	8.0	4.1	982	98.9	96.0	14.1	982



**Average Sentence Length - Felony Class B - Standard Offenders**

Fiscal Year	Months of Incarceration				Months of Probation			
	Mean	Median	Standard Deviation	N	Mean	Median	Standard Deviation	N
14-15	7.6	8.0	4.3	380	99.0	96.0	17.6	380
15-16	8.4	10.2	4.0	267	100.7	96.0	16.5	267
16-17	7.6	6.0	4.1	464	103.8	96.0	15.4	464
17-18	7.7	6.0	4.1	678	101.5	96.0	14.8	678
18-19	7.7	6.4	4.3	831	100.7	96.0	16.1	831
19-20	7.5	6.0	4.8	564	102.0	96.0	16.3	564
20-21	8.1	9.0	4.1	644	101.0	96.0	14.3	644
21-22	7.9	8.0	4.1	968	98.7	96.0	13.3	968



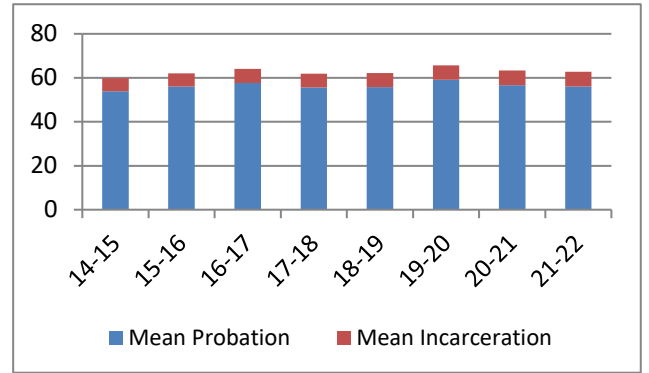
The table for multiple offenders was not included due to low occurrence frequencies.

## Average Split Sentence Lengths in Months by Felony Class

Note: Column N indicates the number of felony convictions. Individual offenders can have multiple convictions. Incarceration includes life without parole and death sentences. Probation includes sentences to community corrections.

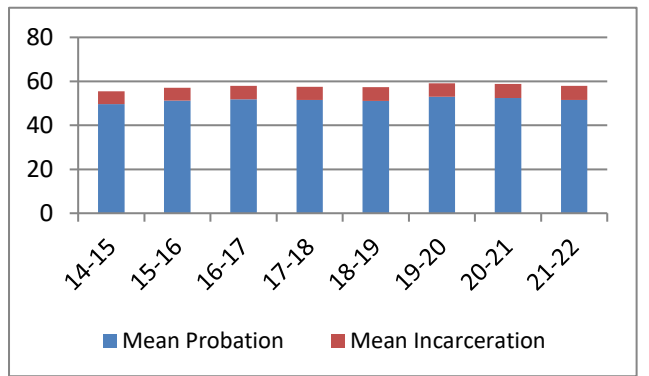
**Average Sentence Length - Class C - All Offenders**

Fiscal Year	Months of Incarceration				Months of Probation			
	Mean	Median	Standard Deviation	N	Mean	Median	Standard Deviation	N
14-15	6.0	5.0	4.2	1,235	53.9	48.0	22.2	1,235
15-16	6.0	5.9	4.1	1,009	56.0	48.0	22.8	1,009
16-17	6.3	5.9	4.1	1,113	57.7	55.5	25.0	1,113
17-18	6.2	5.9	4.2	1,742	55.6	48.0	22.0	1,742
18-19	6.4	5.9	4.3	1,813	55.7	48.0	21.6	1,813
19-20	6.5	5.9	4.2	1,130	59.1	60.0	23.5	1,130
20-21	6.7	5.9	4.3	1,244	56.7	57.0	21.9	1,244
21-22	6.6	6.0	4.4	1,602	56.1	50.9	20.9	1,602



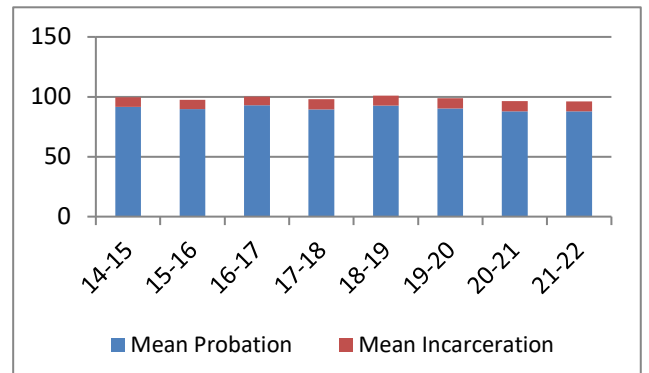
**Average Sentence Length - Class C - Standard Offenders**

Fiscal Year	Months of Incarceration				Months of Probation			
	Mean	Median	Standard Deviation	N	Mean	Median	Standard Deviation	N
14-15	5.8	4.9	4.1	1,101	49.6	48.0	17.1	1,101
15-16	5.7	5.0	4.0	896	51.3	48.0	17.9	896
16-17	6.1	5.9	4.1	961	51.8	48.0	17.9	961
17-18	6.0	5.9	4.1	1,563	51.5	48.0	17.9	1,563
18-19	6.2	5.9	4.2	1,623	51.1	48.0	16.2	1,623
19-20	6.1	5.9	4.1	954	53.0	48.0	17.5	954
20-21	6.4	5.9	4.2	1,113	52.4	48.0	16.9	1,113
21-22	6.4	5.9	4.3	1,406	51.6	48.0	16.5	1,406



**Average Sentence Length - Class C - Multiple Offenders**

Fiscal Year	Months of Incarceration				Months of Probation			
	Mean	Median	Standard Deviation	N	Mean	Median	Standard Deviation	N
14-15	7.9	9.5	4.4	116	91.7	96.0	26.0	116
15-16	7.6	9.0	4.5	98	89.8	96.0	21.8	98
16-17	7.3	6.0	4.2	135	92.9	91.3	27.7	135
17-18	8.6	11.9	4.4	162	89.4	95.5	19.4	162
18-19	8.4	12.0	4.4	171	92.7	96.0	19.8	171
19-20	8.3	12.0	4.3	151	90.4	84.0	21.7	151
20-21	8.6	12.0	4.2	107	87.9	84.0	19.1	107
21-22	8.4	10.0	4.3	182	87.8	91.1	18.6	182

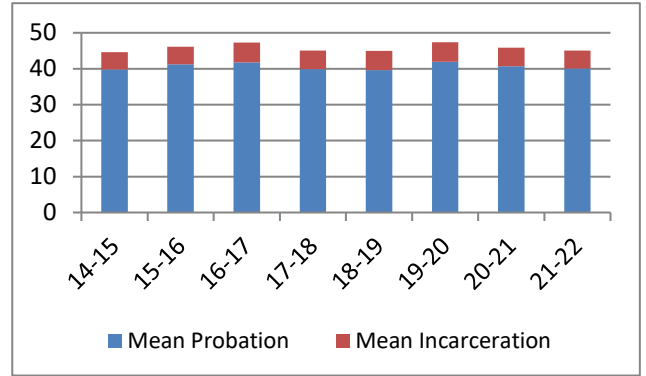


## Average Split Sentence Lengths in Months by Felony Class

Note: Column N indicates the number of felony convictions. Individual offenders can have multiple convictions. Incarceration includes life without parole and death sentences. Probation includes sentences to community corrections.

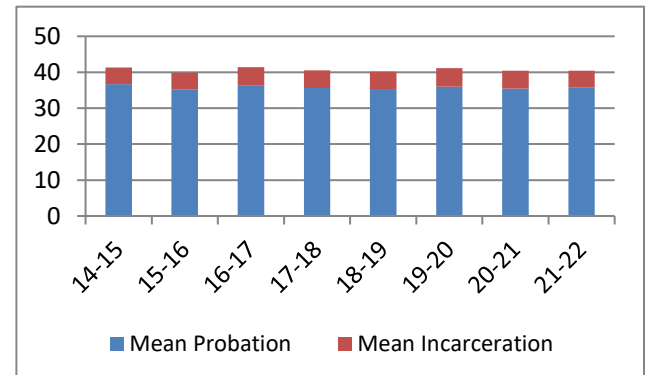
**Average Sentence Length - Class D - All Offenders**

Fiscal Year	Months of Incarceration				Months of Probation			
	Mean	Median	Standard Deviation	N	Mean	Median	Standard Deviation	N
14-15	4.8	3.5	3.7	1,335	39.8	36.0	18.7	1,335
15-16	4.9	3.9	3.7	988	41.2	36.0	21.0	988
16-17	5.5	4.0	4.1	965	41.8	36.0	22.5	965
17-18	5.2	3.9	3.9	1,237	39.9	36.0	19.1	1,237
18-19	5.4	4.0	4.0	1,256	39.6	36.0	19.2	1,256
19-20	5.5	3.9	4.7	815	41.9	36.0	20.9	815
20-21	5.2	3.9	4.0	848	40.7	36.0	20.2	848
21-22	5.0	3.9	3.9	1,290	40.1	36.0	17.5	1,290



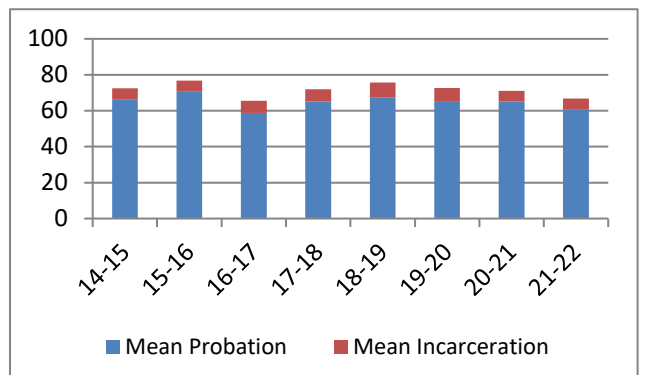
**Average Sentence Length - Class D - Standard Offenders**

Fiscal Year	Months of Incarceration				Months of Probation			
	Mean	Median	Standard Deviation	N	Mean	Median	Standard Deviation	N
14-15	4.6	3.0	3.6	1,214	36.7	36.0	15.4	1,214
15-16	4.6	3.3	3.6	845	35.3	36.0	13.5	845
16-17	5.2	3.9	3.9	807	36.2	36.0	14.6	807
17-18	4.9	3.9	3.8	1,085	35.6	36.0	13.2	1,085
18-19	5.1	3.9	3.8	1,107	35.1	36.0	12.7	1,107
19-20	5.1	3.9	4.7	682	36.0	36.0	12.5	682
20-21	5.0	3.9	3.9	727	35.4	36.0	11.8	727
21-22	4.7	3.3	3.8	1,115	35.7	36.0	11.2	1,115



**Average Sentence Length - Class D - Multiple Offenders**

Fiscal Year	Months of Incarceration				Months of Probation			
	Mean	Median	Standard Deviation	N	Mean	Median	Standard Deviation	N
14-15	6.0	6.0	4.1	108	66.5	67.5	16.7	108
15-16	5.9	6.0	3.6	108	70.9	69.0	20.3	108
16-17	6.7	6.0	4.3	123	58.8	60.0	19.4	123
17-18	6.8	6.0	4.4	126	65.1	60.0	20.4	126
18-19	8.2	10.4	4.0	132	67.5	72.0	20.2	132
19-20	7.3	6.0	4.2	110	65.4	60.0	21.9	110
20-21	5.9	4.9	4.0	93	65.1	60.0	20.9	93
21-22	6.1	5.9	3.9	143	60.6	60.0	16.9	143

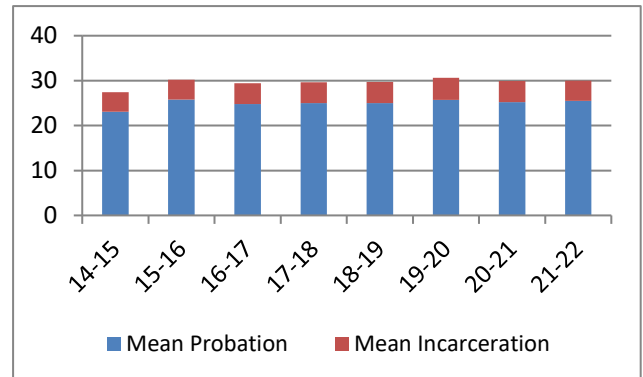


## Average Split Sentence Lengths in Months by Felony Class

Note: Column N indicates the number of felony convictions. Individual offenders can have multiple convictions. Incarceration includes life without parole and death sentences. Probation includes sentences to community corrections.

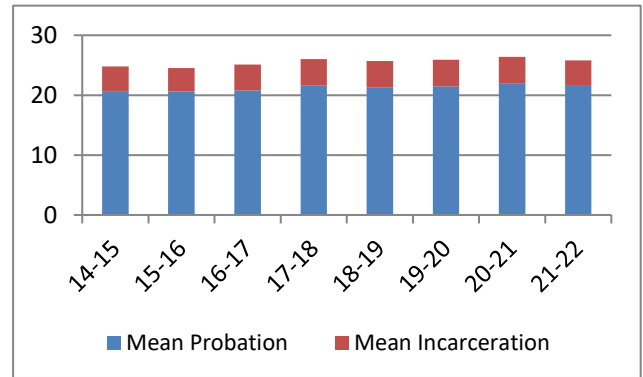
**Average Sentence Length - Class E - All Offenders**

Fiscal Year	Months of Incarceration				Months of Probation			
	Mean	Median	Standard Deviation	N	Mean	Median	Standard Deviation	N
14-15	4.3	3.0	3.2	1,522	23.1	24.0	13.2	1,522
15-16	4.4	3.0	3.4	1,254	25.8	24.0	18.8	1,254
16-17	4.6	3.6	3.4	1,278	24.8	24.0	14.5	1,278
17-18	4.6	3.8	3.4	1,713	25.0	24.0	13.2	1,713
18-19	4.7	3.4	3.5	1,715	25.0	24.0	14.2	1,715
19-20	4.9	3.9	3.6	1,040	25.7	24.0	15.0	1,040
20-21	4.7	3.0	3.7	906	25.2	24.0	14.0	906
21-22	4.5	3.0	3.6	1,400	25.5	24.0	12.7	1,400



**Average Sentence Length - Class E - Standard Offenders**

Fiscal Year	Months of Incarceration				Months of Probation			
	Mean	Median	Standard Deviation	N	Mean	Median	Standard Deviation	N
14-15	4.1	3.0	3.1	1,312	20.7	22.4	11.3	1,312
15-16	3.9	3.0	2.9	1,016	20.6	22.1	10.0	1,016
16-17	4.3	3.0	3.3	1,034	20.8	24.0	9.9	1,034
17-18	4.4	3.3	3.2	1,430	21.6	24.0	10.0	1,430
18-19	4.4	3.0	3.3	1,401	21.3	24.0	10.5	1,401
19-20	4.4	3.0	3.4	830	21.5	24.0	10.7	830
20-21	4.5	3.0	3.6	771	21.9	24.0	9.8	771
21-22	4.1	3.0	3.3	1,125	21.7	24.0	8.9	1,125



**Average Sentence Length - Class E - Multiple Offenders**

Fiscal Year	Months of Incarceration				Months of Probation			
	Mean	Median	Standard Deviation	N	Mean	Median	Standard Deviation	N
14-15	5.3	4.9	3.7	176	36.0	36.0	11.2	176
15-16	6.1	5.0	4.3	186	44.4	36.0	30.3	186
16-17	5.7	4.9	3.7	195	36.4	36.0	11.8	195
17-18	5.9	4.9	4.0	240	38.6	36.0	11.0	240
18-19	5.9	5.9	4.0	247	36.2	36.0	12.4	247
19-20	6.4	5.9	4.0	152	35.5	36.0	13.1	152
20-21	5.9	5.0	4.1	101	37.0	36.0	11.4	101
21-22	5.9	5.9	4.0	220	36.5	36.0	10.9	220

