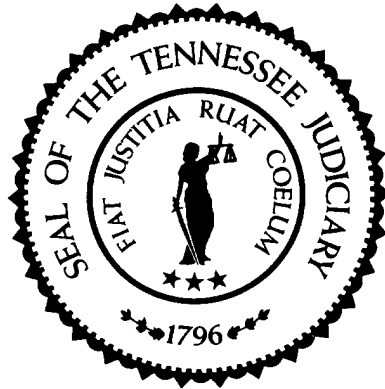


# Sentencing Practices in Tennessee



Administrative Office of the Courts

Information for Cases Sentenced  
Between July 1, 2013 and June 30, 2021

TDOC Data Extracted: February 2022  
Released: March 2022

# Sentencing Practices in Tennessee

## Table of Contents

Methodology	1
Sentence Type Information	
Class A	3
Class B	3
Class C	4
Class D	4
Class E	4
Average Incarceration Lengths in Months	
Class A	5
Rape of Child	6
Second Degree Murder	6
Especially Aggravated Kidnapping	7
Class B	8
Schedule II Cocaine	9
Aggravated Robbery	10
Aggravated Sexual Battery	11
Class C	12
Aggravated Burglary	13
Aggravated Assault	14
Schedule II Cocaine < ½ Gram	15
Schedule II Drugs: Max \$100,000 Fine	16
Class D	17
Theft: \$1,000 to \$10,000	18
Burglary Other Than Habitation	19
Identity Theft	20
Obtain Drugs by Fraud	21
Class E	22
Forgery: Up to \$1,000	23
Burglary: Auto	24
Theft: \$500 to \$1,000	25
Schedule VI Drugs: Not < ½ Ounce	26
Habitual Traffic Offender	27
Failure to Appear (Felony)	28
Average Probation Lengths in Months	
Class B	29
Class C	30
Class D	31
Class E	32
Average Split Sentence Lengths in Months	
Class B	33
Class C	34
Class D	35
Class E	36

## Methodology

The data used in evaluating sentencing practices comes from the Tennessee Department of Correction (TDOC); where individual offense data is captured. Each offense sentence is recorded individually, including cases of multiple offense convictions and eliminating the potential confusion in determining sentence lengths created by these multiple offense convictions. To establish a baseline for comparison purposes, data from multiple years was queried. The initial focus of this analysis consisted of cases where the defendants received incarceration only, either in a TDOC facility or a local jail. That has been expanded to include probation and alternative sentencing information as well. This data is not a sample, but is the entire population of sentences captured by the TDOC during the analyzed time frame.

Sentence lengths are reported for standard offenders, multiple offenders and for all offender types as a group from the body of convicted felons in the State Criminal or Circuit Criminal Courts. Standard and multiple offender defendant types were chosen because they comprise over 90% of all sentences in Tennessee.

Specific offenses are included in analysis first by choosing the top three most frequently occurring offenses in each felony class, then by a combination of occurrence frequency, overall impact on sentence length and by the increasing in frequency of the occurrence of the offense (i.e. the offense is happening in increasing amounts, but was not historically happening in large numbers). The following offenses make nearly 70% of convicted offenses and are included in the statistic table report.

Class A  
Rape of a Child  
Second Degree Murder  
Especially Aggravated Kidnapping  
Class B  
Schedule II Drugs: Cocaine  
Aggravated Robbery  
Aggravated Sexual Battery  
Class C  
Aggravated Burglary  
Aggravated Assault  
Schedule II Drugs: Cocaine < 1/2 Gram  
Schedule II Drugs: Up to \$100,000 Fine  
Class D  
Theft: \$1,000 to \$10,000  
Burglary: Other than Habitation or Auto  
Identity Theft  
Obtain Drugs by Fraud  
Class E  
Forgery: Up to \$1,000  
Burglary: Auto  
Theft: \$500 to \$1,000  
Schedule VI Drugs: Not Less than ½ Ounce  
Habitual Traffic Offender  
Failure to Appear (Felony)

Data for each felony class and defendant type (standard, multiple and all) are presented as well. The tables for the offenses listed and for the felony classes display the mean and median sentence lengths in months, the standard deviation, and the number of convictions for each year reported. This report contains basic incarceration, probation and alternative sentencing information and can be used for the following:

- analyzing trends
- evaluating the effectiveness of legislation aimed at reducing incarceration rates

Given that this data does not include demographic information; it cannot be used to evaluate any scenarios or trends that involve demographic references.

### **Note 1**

The numbers presented here and in previous reports may vary for the same years. Discrepancies are due in part to delayed reporting to the Tennessee Department of Corrections and parole violations over time. Also, due to delayed reporting to TDOC, the total population in recent years may not be included in the analysis at the time of publication.

### **Note 2**

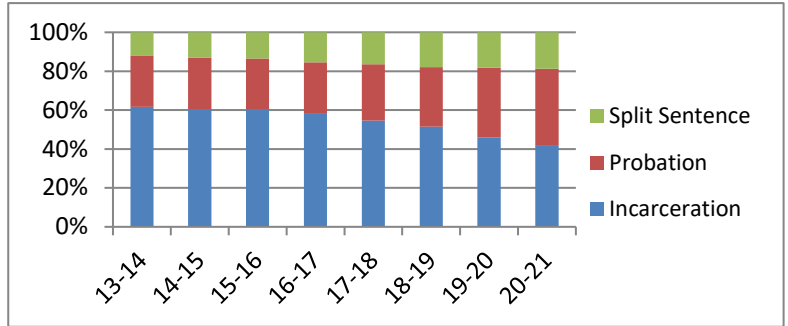
It should be noted that the numbers of filings and dispositions continue to decline statewide due to the impacts of the Covid 19 pandemic on the operations of the courts. There is also a continued decline in incarceration sentences due to the effects of the changes in sentencing guidelines made in 2015/2016. The end effect of these factors was a reduction overall in the number of sentences passed during this fiscal year. This can be noted in the N columns of the data grids in the various categories of the report.

# Sentence Type Information

Note: Column N Indicates the number of felony convictions. Individual offenders can have multiple convictions. Incarceration includes life without parole and death sentences. Probation includes sentences to community corrections.

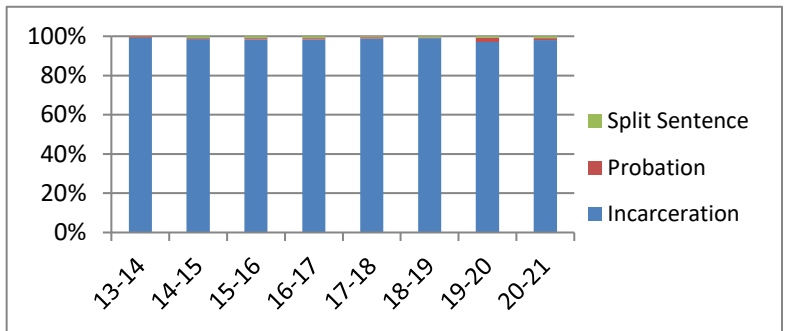
**Percent of Sentence Type - All Felony Classes - All Offenders**

Fiscal Year	Incarceration	Probation	Split Sentence	N
	Percent	Percent	Percent	
13-14	61.7%	26.1%	12.1%	37,971
14-15	60.3%	26.6%	13.1%	34,766
15-16	60.3%	26.3%	13.5%	35,167
16-17	58.0%	26.6%	15.4%	35,271
17-18	54.7%	29.0%	16.3%	33,744
18-19	51.5%	30.6%	17.9%	33,328
19-20	45.9%	35.9%	18.2%	27,679
20-21	41.7%	39.6%	18.8%	21,712



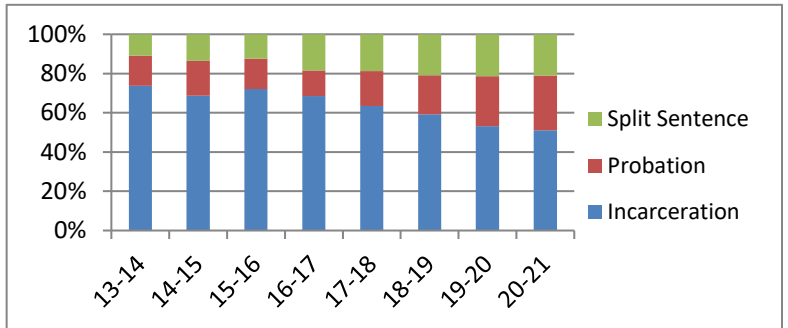
**Percent of Sentence Type - Felony Class A - All Offenders**

Fiscal Year	Incarceration	Probation	Split Sentence	N
	Percent	Percent	Percent	
13-14	99.1%	0.7%	0.2%	586
14-15	98.5%	0.4%	1.0%	477
15-16	98.4%	0.7%	0.9%	549
16-17	98.3%	0.7%	0.9%	542
17-18	98.8%	0.7%	0.5%	584
18-19	99.0%	0.4%	0.6%	509
19-20	97.1%	2.2%	0.7%	409
20-21	98.1%	0.9%	0.9%	317



**Percent of Sentence Type - Felony Class B - All Offenders**

Fiscal Year	Incarceration	Probation	Split Sentence	N
	Percent	Percent	Percent	
13-14	73.8%	15.3%	10.9%	3,116
14-15	68.7%	17.9%	13.5%	3,032
15-16	72.1%	15.6%	12.3%	3,208
16-17	68.5%	13.1%	18.5%	3,620
17-18	63.5%	17.8%	18.7%	3,821
18-19	59.2%	20.0%	20.8%	4,297
19-20	53.2%	25.4%	21.4%	3,865
20-21	51.0%	27.9%	21.1%	3,503

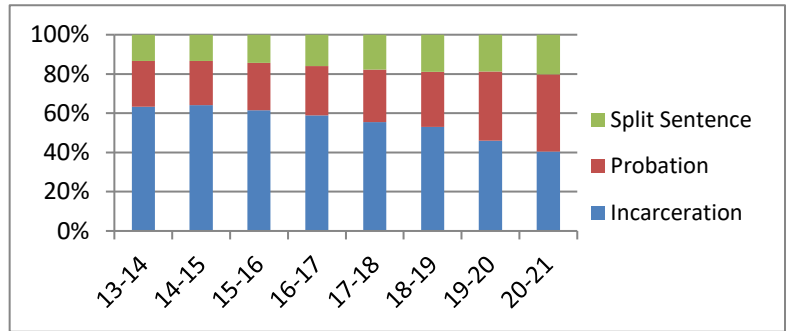


# Sentence Type Information

Note: Column N Indicates the number of felony convictions. Individual offenders can have multiple convictions. Incarceration includes life without parole and death sentences. Probation includes sentences to community corrections.

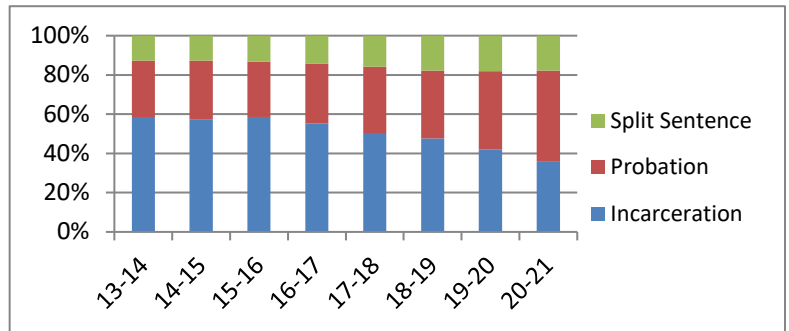
**Percent of Sentence Type - Felony Class C - All Offenders**

Fiscal Year	Incarceration	Probation	Split Sentence	N
	Percent	Percent	Percent	
13-14	63.3%	23.3%	13.4%	10,145
14-15	64.0%	22.5%	13.4%	9,288
15-16	61.5%	24.2%	14.3%	9,770
16-17	58.8%	25.2%	16.0%	10,184
17-18	55.5%	26.8%	17.7%	10,209
18-19	53.1%	28.0%	18.9%	10,327
19-20	46.1%	35.2%	18.8%	8,566
20-21	40.4%	39.4%	20.2%	6,708



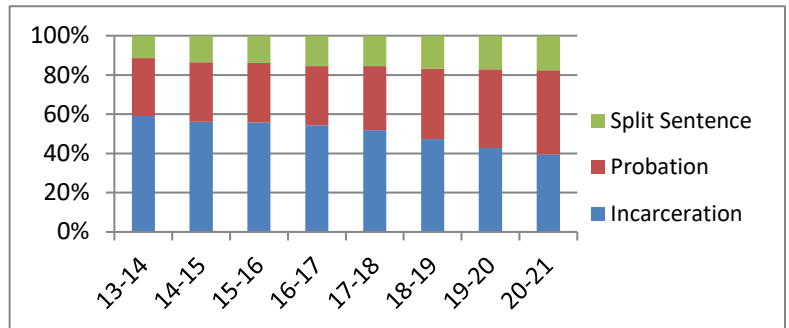
**Percent of Sentence Type - Felony Class D - All Offenders**

Fiscal Year	Incarceration	Probation	Split Sentence	N
	Percent	Percent	Percent	
13-14	58.0%	29.2%	12.7%	11,442
14-15	57.5%	29.8%	12.7%	10,572
15-16	58.5%	28.3%	13.2%	10,038
16-17	55.3%	30.5%	14.2%	9,710
17-18	49.9%	34.2%	15.9%	7,922
18-19	47.6%	34.6%	17.7%	7,587
19-20	42.0%	39.9%	18.2%	6,517
20-21	36.1%	46.1%	17.8%	5,292



**Percent of Sentence Type - Felony Class E - All Offenders**

Fiscal Year	Incarceration	Probation	Split Sentence	N
	Percent	Percent	Percent	
13-14	59.1%	29.4%	11.4%	12,682
14-15	56.1%	30.5%	13.5%	11,397
15-16	55.8%	30.4%	13.9%	11,602
16-17	54.3%	30.2%	15.5%	11,215
17-18	51.9%	32.7%	15.4%	11,208
18-19	47.2%	36.0%	16.8%	10,608
19-20	42.8%	40.1%	17.1%	8,322
20-21	39.5%	42.9%	17.6%	5,892

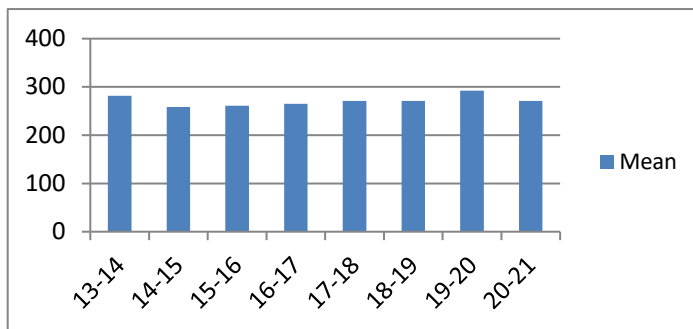


## Average Incarceration Lengths in Months by Felony Class and Offense

Note: Column N indicates the number of felony convictions. Individual offenders can have multiple convictions. Incarceration includes life without parole and death sentences. Probation includes sentences to community corrections.

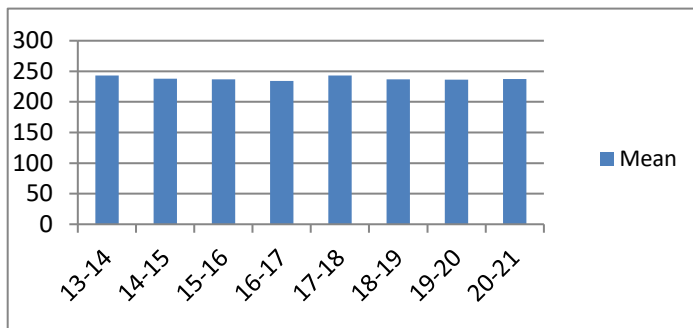
**Average Incarceration Length - Class A - All Offenders**

Fiscal Year	Mean	Median	Standard Deviation	N
13-14	281.67	252.00	117.84	581
14-15	258.64	240.00	89.50	470
15-16	260.94	240.00	94.27	539
16-17	265.20	240.00	96.94	529
17-18	271.19	264.00	90.76	576
18-19	270.93	240.00	96.09	504
19-20	292.28	264.00	125.45	397
20-21	271.11	252.00	88.91	311



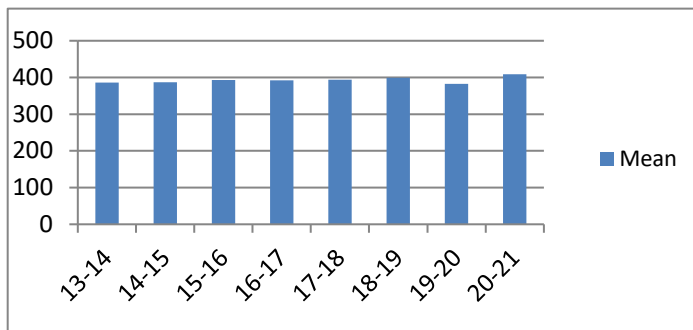
**Average Incarceration Length - Class A - Standard Offenders**

Fiscal Year	Mean	Median	Standard Deviation	N
13-14	243.32	240.00	49.15	419
14-15	237.95	240.00	53.40	369
15-16	237.10	240.00	53.71	424
16-17	234.03	240.00	52.57	407
17-18	243.05	240.00	48.37	451
18-19	237.08	240.00	52.08	384
19-20	236.42	240.00	54.57	280
20-21	237.57	240.00	52.33	234



**Average Incarceration Length - Class A - Multiple Offenders**

Fiscal Year	Mean	Median	Standard Deviation	N
13-14	385.76	360.00	84.00	102
14-15	386.86	384.00	104.00	67
15-16	392.92	384.00	79.69	76
16-17	392.56	360.00	54.69	89
17-18	394.13	360.00	57.53	90
18-19	398.87	360.00	53.79	92
19-20	382.48	360.00	56.37	87
20-21	408.32	384.00	52.15	63

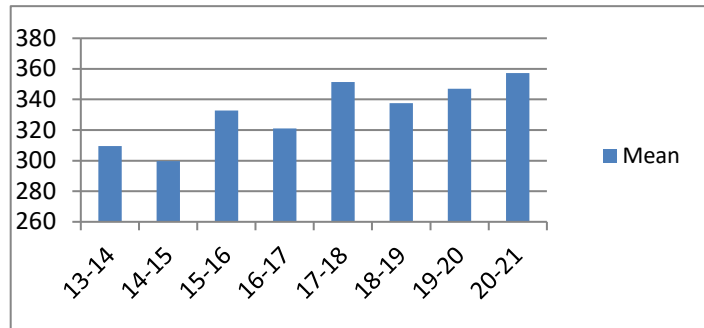


## Average Incarceration Lengths in Months by Felony Class and Offense

Note: Column N indicates the number of felony convictions. Individual offenders can have multiple convictions. Incarceration includes life without parole and death sentences. Probation includes sentences to community corrections.

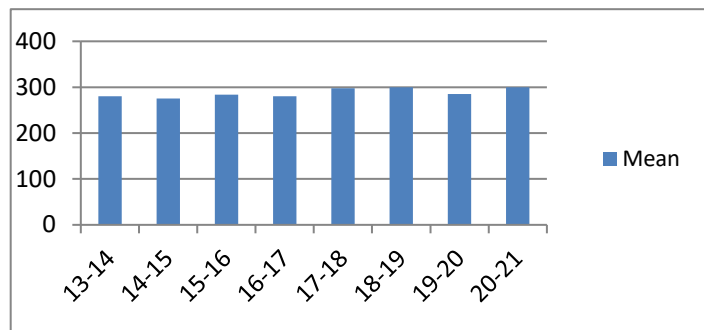
### Average Incarceration Length - Rape of a Child - All Offenders

Fiscal Year	Mean	Median	Standard Deviation	N
13-14	309.51	300.00	62.40	111
14-15	299.68	300.00	63.47	75
15-16	332.87	300.00	93.31	69
16-17	321.13	300.00	67.12	117
17-18	351.48	300.00	72.11	100
18-19	337.55	300.00	46.54	85
19-20	346.99	360.00	63.53	83
20-21	357.31	342.00	68.25	58



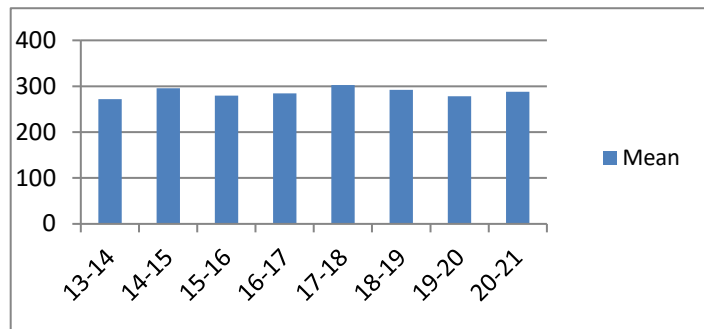
### Average Incarceration Length - Rape of a Child - Standard Offenders

Fiscal Year	Mean	Median	Standard Deviation	N
13-14	280.31	300.00	41.12	78
14-15	275.58	300.00	42.24	57
15-16	283.43	300.00	33.31	42
16-17	280.56	300.00	41.54	71
17-18	297.82	300.00	11.34	55
18-19	300.00	300.00	0.00	44
19-20	285.33	300.00	38.57	27
20-21	300.00	300.00	0.00	28



### Average Incarceration Length - Second Degree Murder - All Offenders

Fiscal Year	Mean	Median	Standard Deviation	N
13-14	271.87	264.00	73.68	93
14-15	295.62	300.00	103.64	78
15-16	279.64	252.00	96.14	113
16-17	284.77	246.00	96.52	104
17-18	302.72	300.00	102.67	97
18-19	292.24	288.00	99.42	126
19-20	278.34	264.00	87.72	87
20-21	288.16	278.00	94.64	87



low occurrence frequencies.

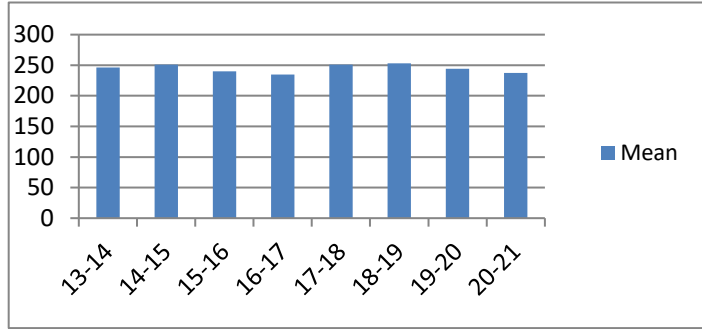


## Average Incarceration Lengths in Months by Felony Class and Offense

Note: Column N indicates the number of felony convictions. Individual offenders can have multiple convictions. Incarceration includes life without parole and death sentences. Probation includes sentences to community corrections.

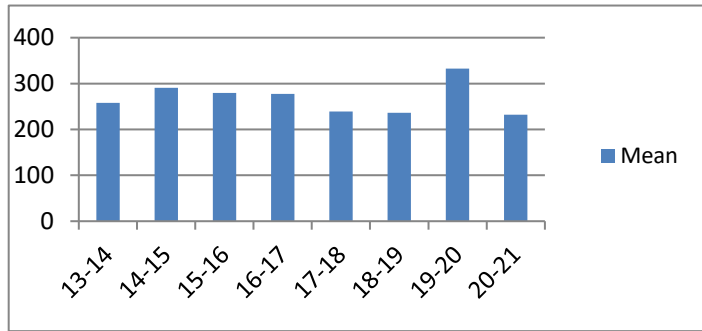
### Average Incarceration Length - Second Degree Murder - Standard Offenders

Fiscal Year	Mean	Median	Standard Deviation	N
13-14	246.08	240.00	47.12	73
14-15	251.25	240.00	44.72	48
15-16	240.04	240.00	45.21	81
16-17	234.81	240.00	46.92	74
17-18	250.98	252.00	45.52	59
18-19	253.30	240.00	44.21	97
19-20	243.97	240.00	45.75	65
20-21	237.14	240.00	47.43	56



### Average Incarceration Length - Especially Aggravated Kidnapping - All Offenders

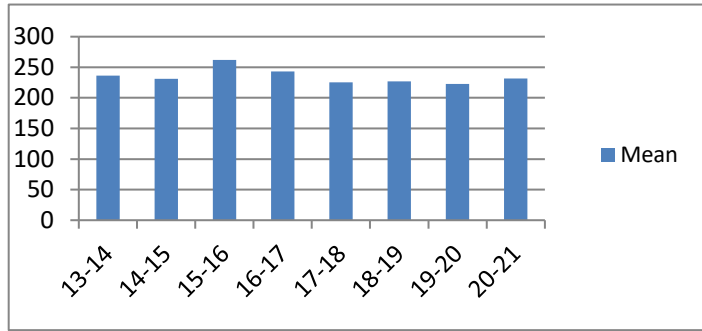
Fiscal Year	Mean	Median	Standard Deviation	N
13-14	257.87	240.00	103.58	46
14-15	290.57	264.00	117.33	35
15-16	279.36	300.00	101.59	66
16-17	277.69	240.00	135.07	39
17-18	239.27	240.00	61.62	33
18-19	236.48	240.00	64.27	46
19-20	332.89	240.00	204.61	27
20-21	231.82	240.00	49.93	11



low occurrence frequencies.

### Average Incarceration Length - Especially Aggravated Kidnapping - Standard Offenders

Fiscal Year	Mean	Median	Standard Deviation	N
13-14	236.31	240.00	44.57	39
14-15	231.36	240.00	53.28	25
15-16	262.17	300.00	57.20	59
16-17	243.09	240.00	38.76	35
17-18	225.20	210.00	43.06	30
18-19	227.08	240.00	41.70	39
19-20	222.60	216.00	46.96	20
20-21	231.82	240.00	49.93	11

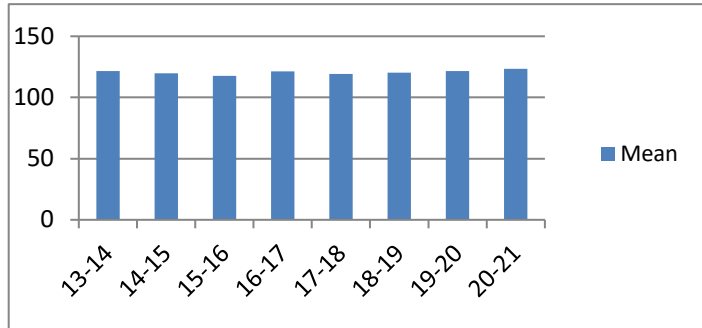


## Average Incarceration Lengths in Months by Felony Class and Offense

Note: Column N indicates the number of felony convictions. Individual offenders can have multiple convictions. Incarceration includes life without parole and death sentences. Probation includes sentences to community corrections.

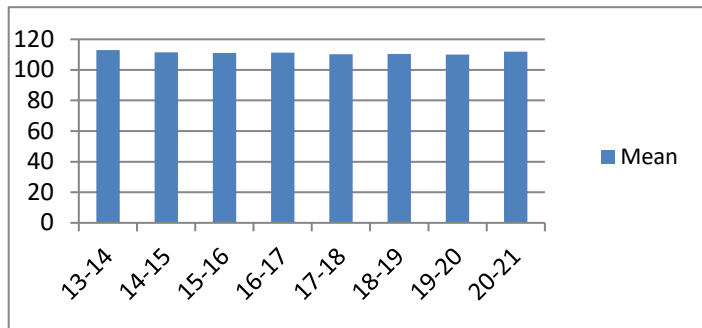
**Average Incarceration Length - Felony Class B - All Offenders**

Fiscal Year	Mean	Median	Standard Deviation	N
13-14	121.68	117.00	39.67	2,300
14-15	119.64	108.00	36.09	2,082
15-16	117.70	108.00	35.78	2,310
16-17	121.34	108.00	38.08	2,477
17-18	119.32	108.00	37.23	2,427
18-19	120.14	108.00	39.94	2,533
19-20	121.49	108.00	42.21	2,058
20-21	123.40	120.00	40.35	1,785



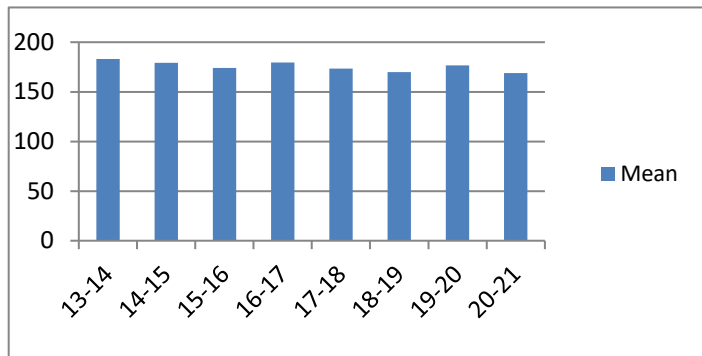
**Average Incarceration Length - Felony Class B - Standard Offenders**

Fiscal Year	Mean	Median	Standard Deviation	N
13-14	112.87	108.00	20.67	1,969
14-15	111.43	99.00	20.07	1,780
15-16	110.99	96.00	18.85	1,946
16-17	111.21	96.00	19.52	2,071
17-18	110.31	96.00	19.34	2,033
18-19	110.46	96.00	22.73	2,102
19-20	109.99	96.00	19.56	1,686
20-21	112.02	108.00	19.26	1,458



**Average Incarceration Length - Felony Class B - Multiple Offenders**

Fiscal Year	Mean	Median	Standard Deviation	N
13-14	183.03	180.00	40.35	200
14-15	179.09	180.00	43.37	224
15-16	174.05	180.00	34.14	222
16-17	179.69	180.00	40.45	313
17-18	173.40	168.00	37.65	269
18-19	169.85	156.00	39.95	312
19-20	176.60	180.00	37.57	254
20-21	168.85	162.00	37.35	235

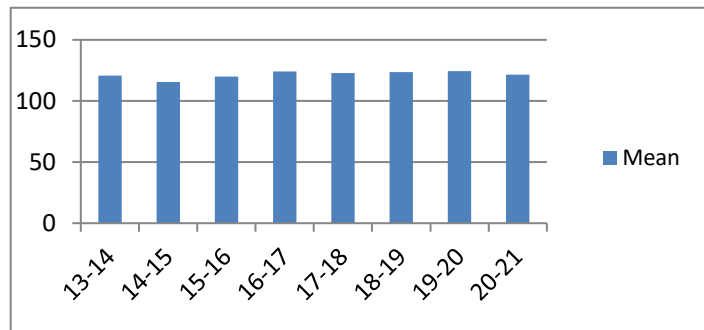


## Average Incarceration Lengths in Months by Felony Class and Offense

Note: Column N indicates the number of felony convictions. Individual offenders can have multiple convictions. Incarceration includes life without parole and death sentences. Probation includes sentences to community corrections.

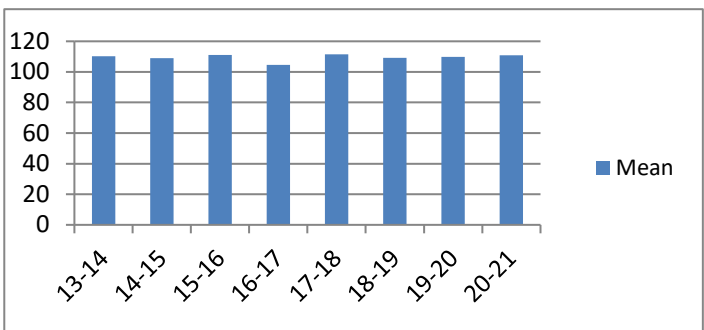
**Average Incarceration Length - Schedule II Cocaine - All Offenders**

Fiscal Year	Mean	Median	Standard Deviation	N
13-14	120.67	108.00	36.68	391
14-15	115.37	108.00	32.29	335
15-16	119.97	120.00	34.75	216
16-17	124.25	96.00	44.71	197
17-18	122.76	114.00	38.91	215
18-19	123.67	108.00	42.16	221
19-20	124.32	120.00	40.11	139
20-21	121.56	120.00	36.02	77



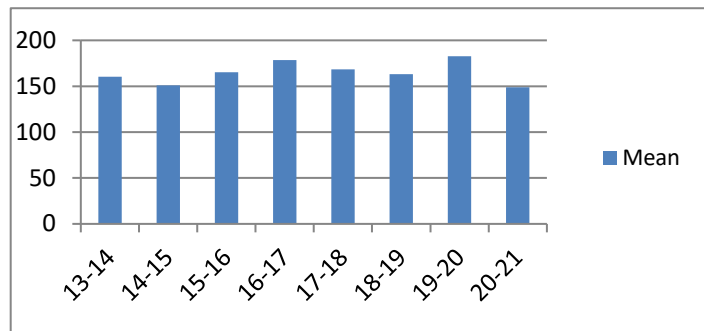
**Average Incarceration Length - Schedule II Cocaine - Standard Offenders**

Fiscal Year	Mean	Median	Standard Deviation	N
13-14	110.18	96.00	19.48	322
14-15	109.03	96.00	21.10	291
15-16	111.08	108.00	18.93	183
16-17	104.57	96.00	15.15	145
17-18	111.52	108.00	21.38	174
18-19	109.14	96.00	18.41	175
19-20	109.84	96.00	17.81	111
20-21	110.81	114.00	16.11	64



**Average Incarceration Length - Schedule II Cocaine - Multiple Offenders**

Fiscal Year	Mean	Median	Standard Deviation	N
13-14	160.50	144.00	30.32	56
14-15	151.03	144.00	41.33	35
15-16	165.33	168.00	37.85	27
16-17	178.67	180.00	40.71	45
17-18	168.33	144.00	40.41	36
18-19	163.00	156.00	23.37	36
19-20	182.86	180.00	42.41	21
20-21	148.80	144.00	28.96	10

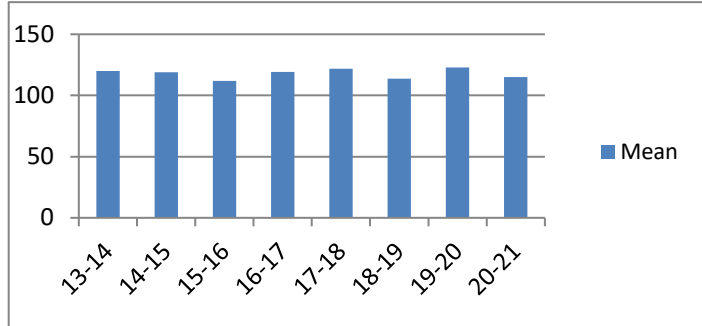


## Average Incarceration Lengths in Months by Felony Class and Offense

Note: Column N indicates the number of felony convictions. Individual offenders can have multiple convictions. Incarceration includes life without parole and death sentences. Probation includes sentences to community corrections.

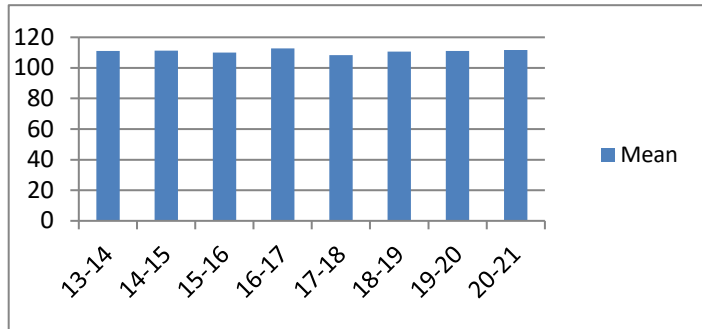
**Average Incarceration Length -  
Aggravated Robbery - All Offenders**

Fiscal Year	Mean	Median	Standard Deviation	N
13-14	120.00	96.00	42.92	501
14-15	119.02	108.00	39.88	410
15-16	111.81	96.00	29.70	514
16-17	119.14	108.00	39.57	428
17-18	121.74	96.00	45.44	457
18-19	113.74	96.00	32.69	344
19-20	122.97	96.00	53.87	305
20-21	115.15	96.00	37.20	259



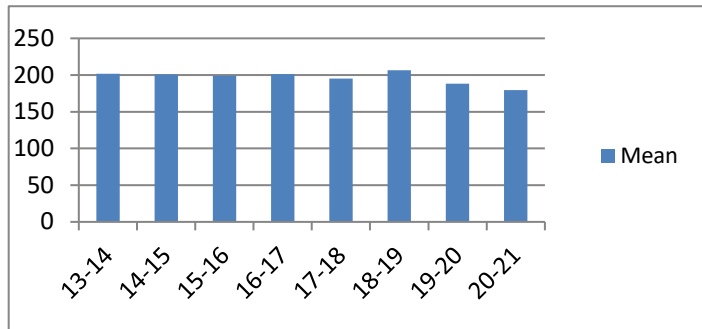
**Average Incarceration Length -  
Aggravated Robbery - Standard Offenders**

Fiscal Year	Mean	Median	Standard Deviation	N
13-14	111.16	96.00	18.12	408
14-15	111.23	108.00	17.68	333
15-16	110.13	96.00	19.38	438
16-17	112.67	108.00	19.10	360
17-18	108.28	96.00	17.53	324
18-19	110.56	96.00	22.19	288
19-20	111.02	96.00	18.03	230
20-21	111.75	96.00	20.49	221



**Average Incarceration Length -  
Aggravated Robbery - Multiple Offenders**

Fiscal Year	Mean	Median	Standard Deviation	N
13-14	201.63	216.00	36.26	38
14-15	200.73	180.00	29.70	33
15-16	199.00	201.00	22.57	18
16-17	201.11	204.00	34.84	27
17-18	195.29	192.00	24.02	62
18-19	206.53	216.00	26.41	19
19-20	188.33	192.00	20.04	36
20-21	179.45	168.00	41.00	11

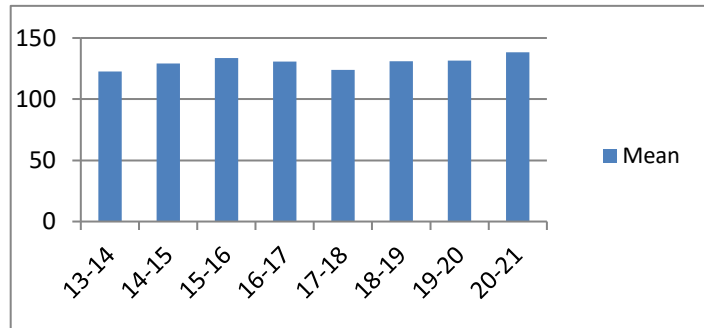


## Average Incarceration Lengths in Months by Felony Class and Offense

Note: Column N indicates the number of felony convictions. Individual offenders can have multiple convictions. Incarceration includes life without parole and death sentences. Probation includes sentences to community corrections.

**Average Incarceration Length -  
Aggravated Sexual Battery - All Offenders**

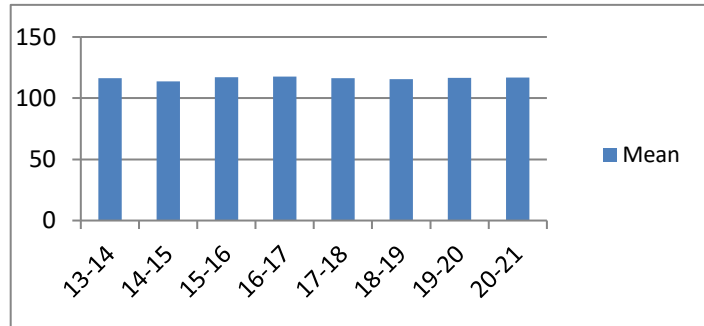
Fiscal Year	Mean	Median	Standard Deviation	N
13-14	122.71	120.00	34.33	183
14-15	129.24	120.00	41.85	168
15-16	133.65	120.00	40.09	141
16-17	130.61	120.00	39.30	247
17-18	123.93	120.00	32.84	217
18-19	131.11	120.00	48.15	219
19-20	131.46	120.00	44.74	142
20-21	138.26	120.00	41.03	112



low occurrence frequencies.

**Average Incarceration Length - Aggravated Sexual  
Battery - Standard Offenders**

Fiscal Year	Mean	Median	Standard Deviation	N
13-14	116.32	120.00	18.26	163
14-15	113.61	108.00	16.99	139
15-16	117.20	120.00	18.89	107
16-17	117.77	120.00	19.21	210
17-18	116.40	120.00	18.17	200
18-19	115.65	120.00	18.36	185
19-20	116.54	120.00	19.35	118
20-21	116.96	120.00	19.16	79

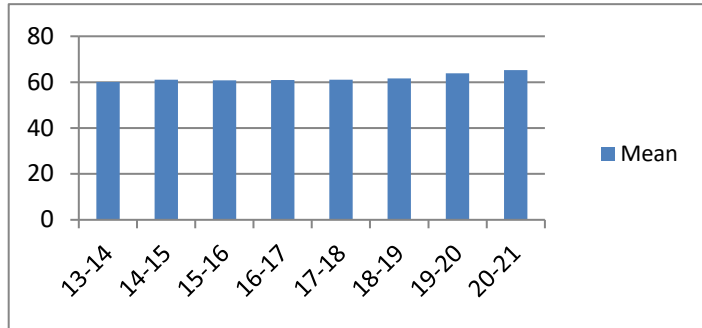


## Average Incarceration Lengths in Months by Felony Class and Offense

Note: Column N indicates the number of felony convictions. Individual offenders can have multiple convictions. Incarceration includes life without parole and death sentences. Probation includes sentences to community corrections.

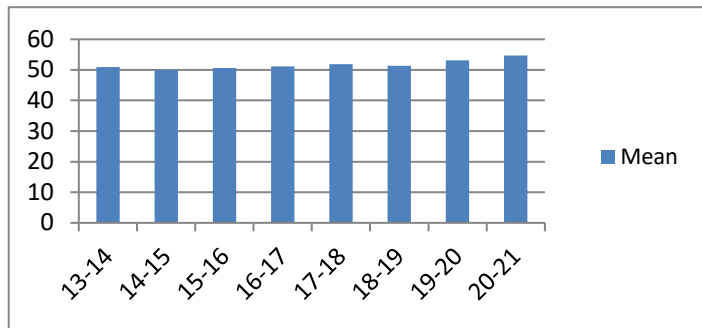
**Average Incarceration Length - Class C - All Offenders**

Fiscal Year	Mean	Median	Standard Deviation	N
13-14	60.14	48.00	27.55	6,420
14-15	61.04	48.00	30.19	5,948
15-16	60.76	48.00	28.19	6,010
16-17	60.96	54.00	28.25	5,991
17-18	61.03	60.00	28.10	5,666
18-19	61.57	60.00	28.75	5,480
19-20	63.86	60.00	30.68	3,947
20-21	65.23	60.00	29.76	2,710



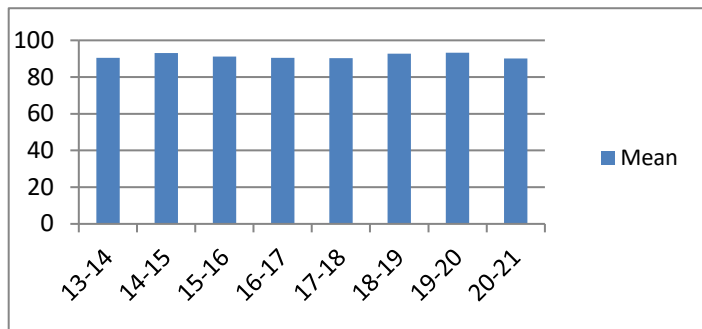
**Average Incarceration Length - Class C - Standard Offenders**

Fiscal Year	Mean	Median	Standard Deviation	N
13-14	50.96	48.00	15.85	5,204
14-15	50.04	48.00	16.47	4,702
15-16	50.61	48.00	16.57	4,752
16-17	51.12	48.00	16.11	4,797
17-18	51.90	48.00	16.59	4,607
18-19	51.39	48.00	16.85	4,332
19-20	53.16	48.00	19.44	3,068
20-21	54.71	48.00	18.57	2,059



**Average Incarceration Length - Class C - Multiple Offenders**

Fiscal Year	Mean	Median	Standard Deviation	N
13-14	90.50	96.00	19.94	955
14-15	93.10	96.00	22.13	958
15-16	91.23	96.00	20.97	975
16-17	90.44	96.00	20.13	902
17-18	90.33	96.00	20.23	817
18-19	92.69	96.00	20.81	925
19-20	93.23	96.00	20.75	644
20-21	90.18	96.00	22.60	495

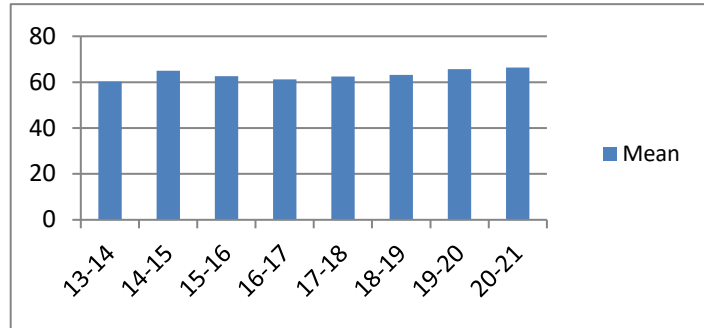


## Average Incarceration Lengths in Months by Felony Class and Offense

Note: Column N indicates the number of felony convictions. Individual offenders can have multiple convictions. Incarceration includes life without parole and death sentences. Probation includes sentences to community corrections.

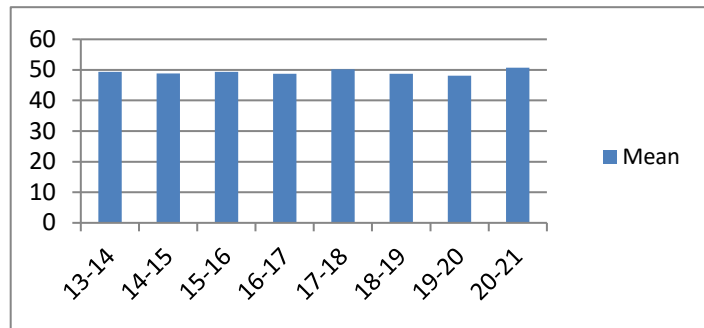
### Average Incarceration Length - Aggravated Burglary - All Offenders

Fiscal Year	Mean	Median	Standard Deviation	N
13-14	60.30	48.00	29.08	1,800
14-15	65.02	48.00	33.82	1,672
15-16	62.68	48.00	30.64	1,561
16-17	61.16	48.00	30.19	1,265
17-18	62.53	54.00	31.42	1,042
18-19	63.22	48.00	32.08	923
19-20	65.69	48.00	36.15	558
20-21	66.33	60.00	34.02	346



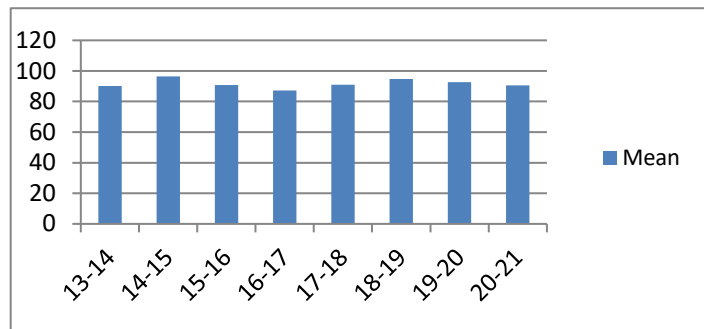
### Average Incarceration Length - Aggravated Burglary - Standard Offenders

Fiscal Year	Mean	Median	Standard Deviation	N
13-14	49.40	48.00	14.23	1,420
14-15	48.89	48.00	16.72	1,199
15-16	49.39	48.00	14.16	1,164
16-17	48.75	48.00	14.26	965
17-18	50.19	48.00	15.17	809
18-19	48.78	48.00	14.67	683
19-20	48.06	48.00	14.76	387
20-21	50.67	48.00	15.16	249



### Average Incarceration Length - Aggravated Burglary - Multiple Offenders

Fiscal Year	Mean	Median	Standard Deviation	N
13-14	90.25	84.00	19.90	292
14-15	96.38	96.00	21.97	373
15-16	90.75	84.00	22.94	298
16-17	87.23	84.00	18.60	215
17-18	90.99	96.00	19.81	169
18-19	94.77	96.00	20.46	195
19-20	92.57	96.00	19.73	111
20-21	90.53	90.00	22.62	70

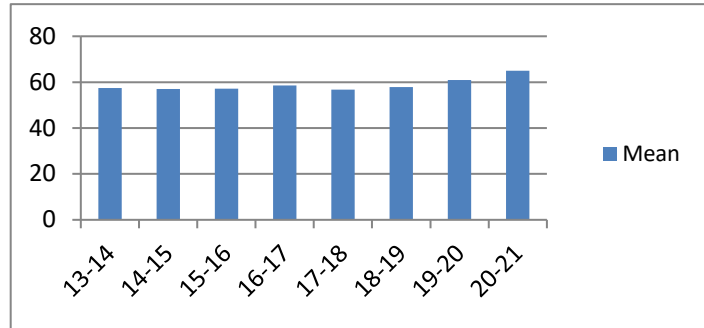


## Average Incarceration Lengths in Months by Felony Class and Offense

Note: Column N indicates the number of felony convictions. Individual offenders can have multiple convictions. Incarceration includes life without parole and death sentences. Probation includes sentences to community corrections.

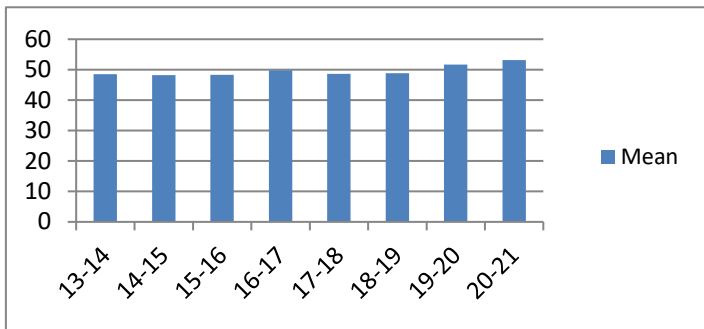
### Average Incarceration Length - Aggravated Assault - All Offenders

Fiscal Year	Mean	Median	Standard Deviation	N
13-14	57.41	48.00	26.28	1,039
14-15	56.97	48.00	26.58	1,045
15-16	57.16	48.00	27.42	1,199
16-17	58.58	48.00	26.27	1,184
17-18	56.71	48.00	26.05	1,169
18-19	57.90	48.00	26.00	1,210
19-20	60.89	48.00	28.73	961
20-21	65.03	60.00	31.29	671



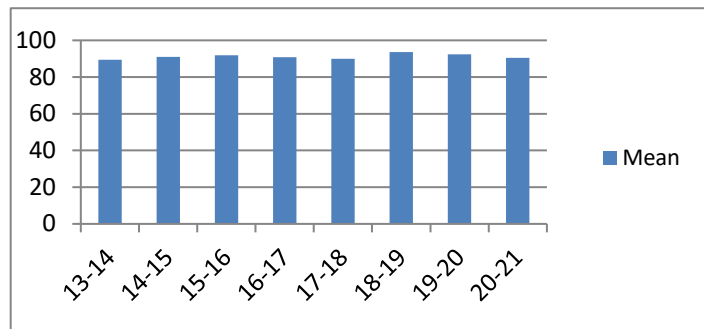
### Average Incarceration Length - Aggravated Assault - Standard Offenders

Fiscal Year	Mean	Median	Standard Deviation	N
13-14	48.54	48.00	14.18	847
14-15	48.18	36.03	14.65	864
15-16	48.36	36.00	16.61	986
16-17	49.77	48.00	15.35	970
17-18	48.65	48.00	15.07	976
18-19	48.82	48.00	15.68	973
19-20	51.66	48.00	19.12	768
20-21	53.17	48.00	18.11	502



### Average Incarceration Length - Aggravated Assault - Multiple Offenders

Fiscal Year	Mean	Median	Standard Deviation	N
13-14	89.50	84.00	21.00	167
14-15	90.99	96.00	20.83	140
15-16	91.85	84.00	21.63	163
16-17	90.75	96.00	19.54	161
17-18	89.90	84.00	20.58	157
18-19	93.53	96.00	22.86	208
19-20	92.34	96.00	21.23	134
20-21	90.52	96.00	25.04	131



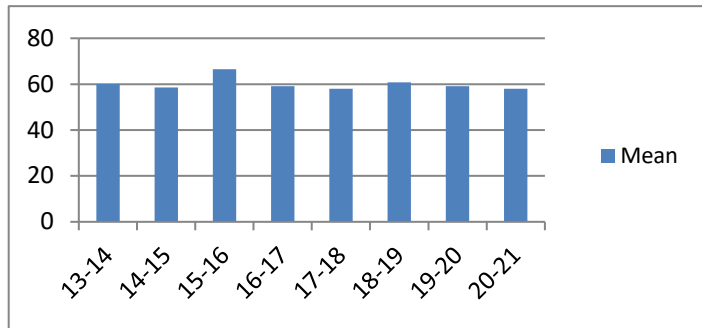


## Average Incarceration Lengths in Months by Felony Class and Offense

Note: Column N indicates the number of felony convictions. Individual offenders can have multiple convictions. Incarceration includes life without parole and death sentences. Probation includes sentences to community corrections.

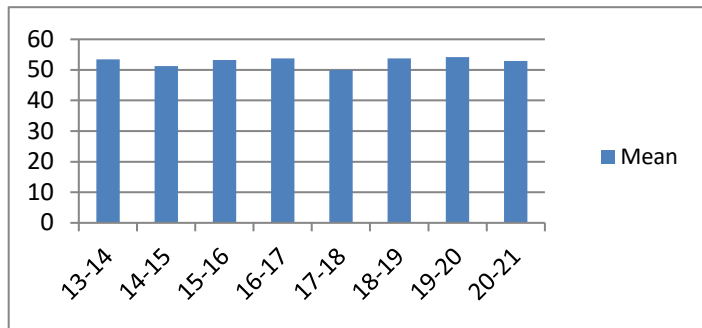
### Average Incarceration Length - Schedule II Cocaine < 1/2 Gram - All Offenders

Fiscal Year	Mean	Median	Standard Deviation	N
13-14	60.11	60.00	21.89	333
14-15	58.52	60.00	24.95	272
15-16	66.57	60.00	32.50	201
16-17	59.11	60.00	23.59	169
17-18	58.01	48.00	23.99	125
18-19	60.84	60.00	27.39	113
19-20	59.17	60.00	21.13	72
20-21	58.04	60.00	20.20	55



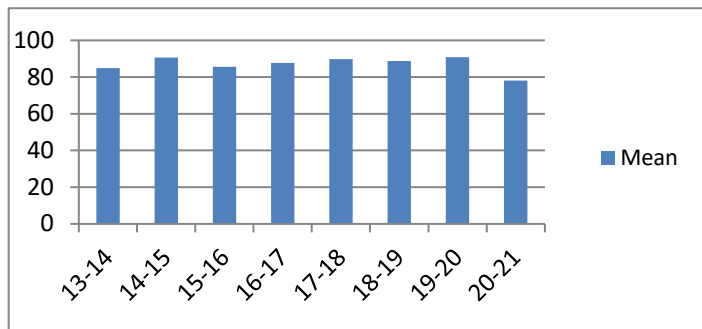
### Average Incarceration Length - Schedule II Cocaine < 1/2 Gram - Standard Offenders

Fiscal Year	Mean	Median	Standard Deviation	N
13-14	53.48	48.00	17.08	263
14-15	51.26	48.00	14.88	228
15-16	53.28	48.00	17.08	148
16-17	53.75	48.00	18.11	145
17-18	50.02	48.00	15.13	102
18-19	53.73	48.00	15.76	96
19-20	54.19	48.00	15.80	63
20-21	52.91	48.00	16.79	44



### Average Incarceration Length - Schedule II Cocaine < 1/2 Gram - Multiple Offenders

Fiscal Year	Mean	Median	Standard Deviation	N
13-14	84.90	72.00	19.41	67
14-15	90.64	84.00	17.84	28
15-16	85.62	72.00	21.20	37
16-17	87.65	84.00	19.96	23
17-18	89.74	84.00	22.72	19
18-19	88.80	72.00	22.77	10
19-20	90.75	87.00	20.64	8
20-21	78.00	84.00	15.71	8

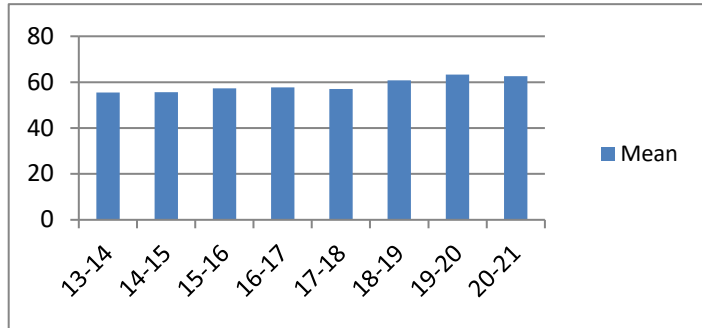


## Average Incarceration Lengths in Months by Felony Class and Offense

Note: Column N indicates the number of felony convictions. Individual offenders can have multiple convictions. Incarceration includes life without parole and death sentences. Probation includes sentences to community corrections.

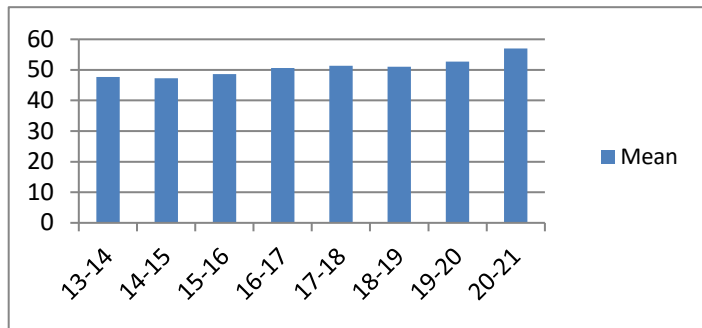
**Average Incarceration Length - Schedule II Drugs:  
Max \$100,000 Fine - All Offenders**

Fiscal Year	Mean	Median	Standard Deviation	N
13-14	55.52	48.00	23.58	895
14-15	55.67	48.00	31.41	639
15-16	57.37	48.00	24.40	596
16-17	57.72	48.00	24.53	590
17-18	56.99	48.00	22.70	441
18-19	60.76	54.00	28.08	364
19-20	63.32	60.00	25.21	161
20-21	62.66	72.00	23.25	140



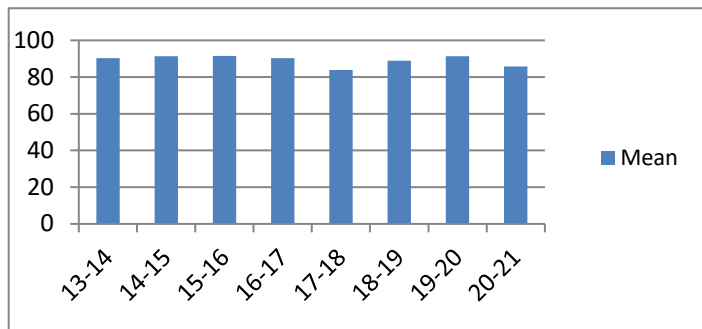
**Average Incarceration Length - Schedule II Drugs:  
Max \$100,000 Fine - Standard Offenders**

Fiscal Year	Mean	Median	Standard Deviation	N
13-14	47.72	36.03	14.45	733
14-15	47.31	36.00	15.33	550
15-16	48.62	48.00	13.70	482
16-17	50.59	48.00	15.70	500
17-18	51.37	48.00	15.89	372
18-19	51.00	48.00	16.06	292
19-20	52.71	48.00	15.78	121
20-21	57.03	60.00	17.59	117



**Average Incarceration Length - Schedule II Drugs:  
Max \$100,000 Fine - Multiple Offenders**

Fiscal Year	Mean	Median	Standard Deviation	N
13-14	90.28	84.00	19.93	130
14-15	91.30	96.00	21.39	71
15-16	91.49	84.00	21.09	106
16-17	90.24	96.00	22.00	75
17-18	83.81	72.00	25.64	63
18-19	88.97	84.00	19.95	58
19-20	91.33	96.00	14.98	36
20-21	85.71	72.00	19.08	21

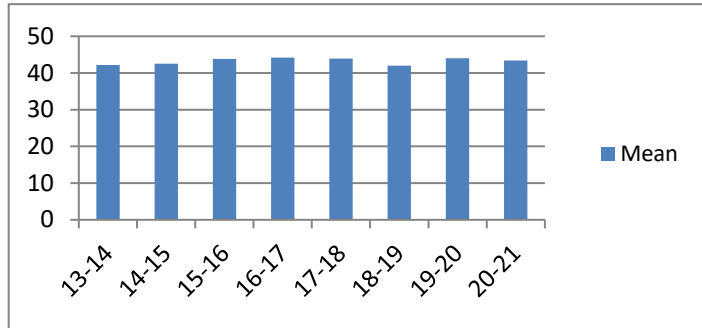


## Average Incarceration Lengths in Months by Felony Class and Offense

Note: Column N indicates the number of felony convictions. Individual offenders can have multiple convictions. Incarceration includes life without parole and death sentences. Probation includes sentences to community corrections.

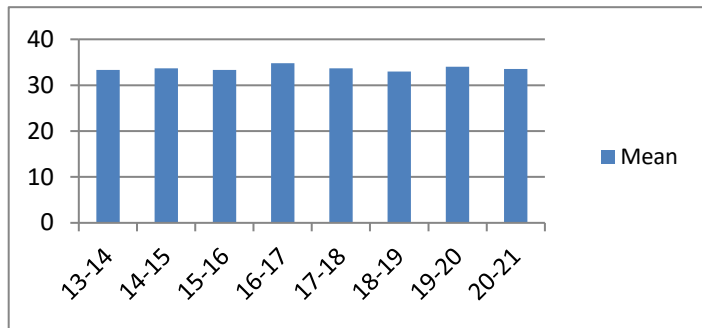
**Average Incarceration Length - Class D - All Offenders**

Fiscal Year	Mean	Median	Standard Deviation	N
13-14	42.21	36.00	23.83	6,640
14-15	42.54	36.00	23.90	6,078
15-16	43.84	36.00	25.33	5,873
16-17	44.17	36.00	24.67	5,374
17-18	43.95	36.00	25.79	3,957
18-19	41.99	36.00	24.24	3,614
19-20	44.03	36.00	26.02	2,736
20-21	43.37	36.00	24.77	1,908



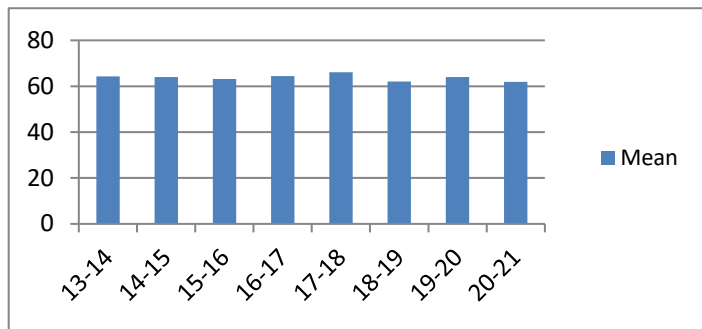
**Average Incarceration Length - Class D - Standard Offenders**

Fiscal Year	Mean	Median	Standard Deviation	N
13-14	33.32	30.00	10.42	5,215
14-15	33.69	36.00	10.65	4,788
15-16	33.31	36.00	10.15	4,395
16-17	34.79	36.00	11.05	4,168
17-18	33.65	36.00	10.62	3,036
18-19	32.95	30.00	10.36	2,819
19-20	34.06	36.00	12.04	2,107
20-21	33.56	30.00	11.78	1,422



**Average Incarceration Length - Class D - Multiple Offenders**

Fiscal Year	Mean	Median	Standard Deviation	N
13-14	64.33	60.00	17.78	1,103
14-15	63.96	60.00	18.60	970
15-16	63.21	60.00	18.24	1,117
16-17	64.39	60.00	18.64	911
17-18	66.06	60.00	19.46	678
18-19	62.01	60.00	18.75	603
19-20	63.95	60.00	18.78	442
20-21	61.95	60.00	18.47	370

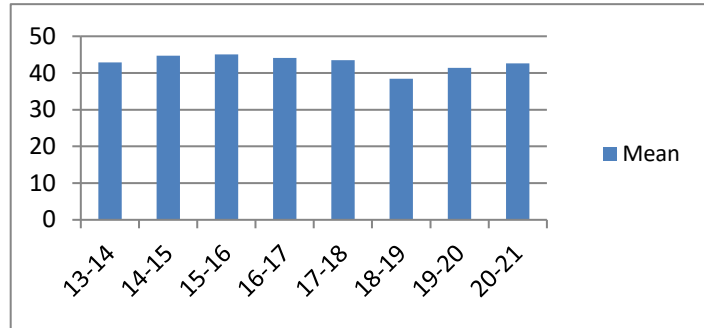


## Average Incarceration Lengths in Months by Felony Class and Offense

Note: Column N indicates the number of felony convictions. Individual offenders can have multiple convictions. Incarceration includes life without parole and death sentences. Probation includes sentences to community corrections.

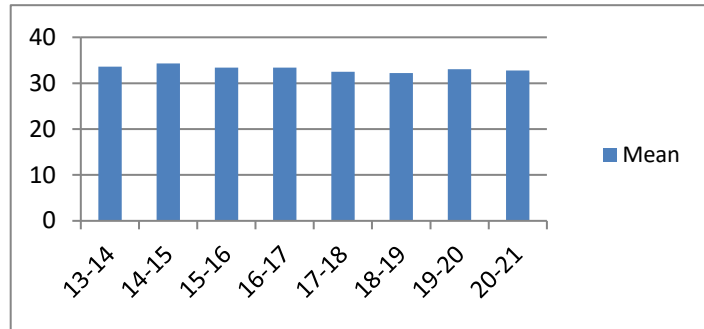
**Average Incarceration Length - Theft: \$1,000 to \$10,000 - All Offenders**

Fiscal Year	Mean	Median	Standard Deviation	N
13-14	42.90	36.00	24.91	2,224
14-15	44.69	36.00	25.64	2,093
15-16	45.04	36.00	26.49	2,072
16-17	44.07	36.00	25.09	1,577
17-18	43.50	36.00	26.14	663
18-19	38.47	36.00	20.61	264
19-20	41.37	36.00	23.49	149
20-21	42.63	36.00	25.78	67



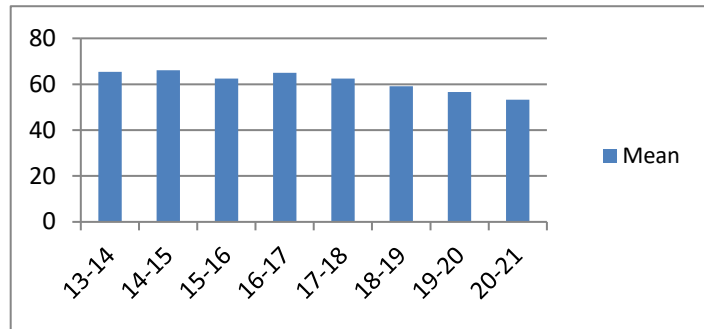
**Average Incarceration Length - Theft: \$1,000 to \$10,000 - Standard Offenders**

Fiscal Year	Mean	Median	Standard Deviation	N
13-14	33.60	36.00	10.26	1,752
14-15	34.34	36.00	11.21	1,589
15-16	33.36	36.00	10.09	1,480
16-17	33.42	36.00	10.53	1,177
17-18	32.52	24.00	11.29	490
18-19	32.21	24.00	11.18	214
19-20	33.07	25.00	10.64	114
20-21	32.75	24.02	10.42	48



**Average Incarceration Length - Theft: \$1,000 to \$10,000 - Multiple Offenders**

Fiscal Year	Mean	Median	Standard Deviation	N
13-14	65.35	60.00	19.07	362
14-15	66.12	60.00	19.54	379
15-16	62.52	60.00	19.07	462
16-17	64.97	60.00	19.08	309
17-18	62.50	48.00	20.97	125
18-19	59.14	48.00	18.44	42
19-20	56.67	48.00	18.10	27
20-21	53.25	48.00	9.77	16

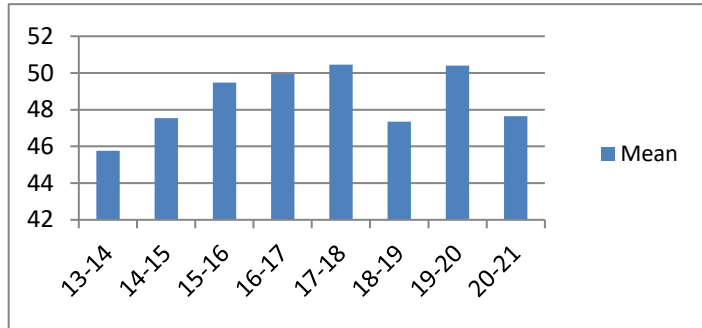


## Average Incarceration Lengths in Months by Felony Class and Offense

Note: Column N indicates the number of felony convictions. Individual offenders can have multiple convictions. Incarceration includes life without parole and death sentences. Probation includes sentences to community corrections.

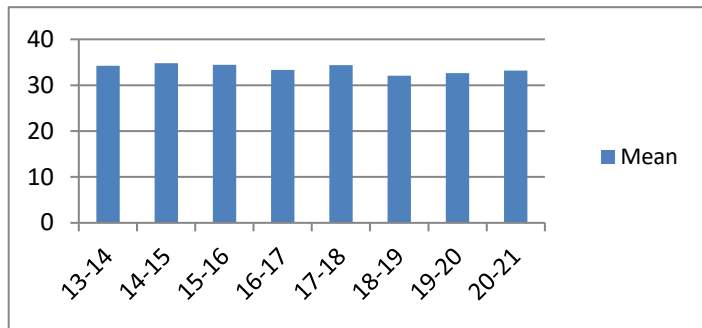
### Average Incarceration Length - Burglary Other Than Habitation - All Offenders

Fiscal Year	Mean	Median	Standard Deviation	N
13-14	45.76	36.00	25.54	915
14-15	47.54	48.00	28.27	811
15-16	49.49	48.00	29.15	757
16-17	49.96	36.00	31.27	763
17-18	50.45	48.00	30.59	725
18-19	47.34	36.00	30.15	725
19-20	50.40	36.00	30.74	525
20-21	47.64	36.00	28.14	403



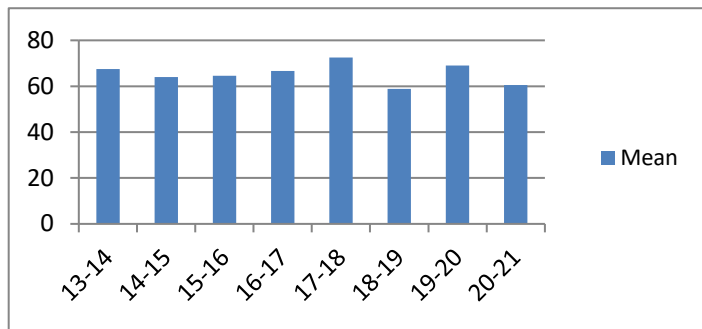
### Average Incarceration Length - Burglary Other Than Habitation - Standard Offenders

Fiscal Year	Mean	Median	Standard Deviation	N
13-14	34.26	36.00	10.63	676
14-15	34.82	36.00	11.15	586
15-16	34.41	36.00	10.68	501
16-17	33.34	36.00	10.56	509
17-18	34.39	36.00	10.67	494
18-19	32.07	24.03	9.77	475
19-20	32.66	24.00	11.16	335
20-21	33.20	36.00	11.34	261



### Average Incarceration Length - Burglary Other Than Habitation - Multiple Offenders

Fiscal Year	Mean	Median	Standard Deviation	N
13-14	67.49	72.00	16.99	185
14-15	64.00	60.00	17.16	146
15-16	64.51	60.00	17.73	189
16-17	66.61	60.00	19.06	176
17-18	72.48	72.00	20.17	162
18-19	58.89	48.00	16.17	175
19-20	68.97	72.00	18.77	133
20-21	60.45	60.00	16.56	107

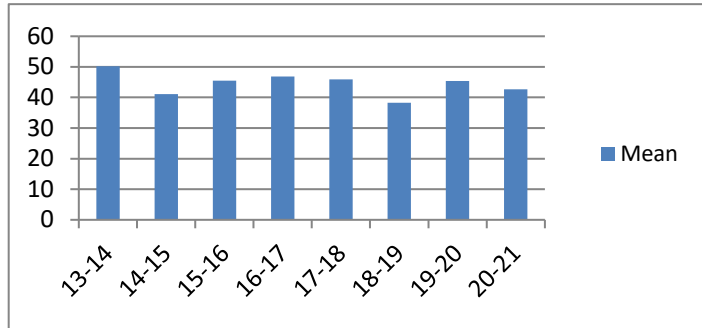


## Average Incarceration Lengths in Months by Felony Class and Offense

Note: Column N indicates the number of felony convictions. Individual offenders can have multiple convictions. Incarceration includes life without parole and death sentences. Probation includes sentences to community corrections.

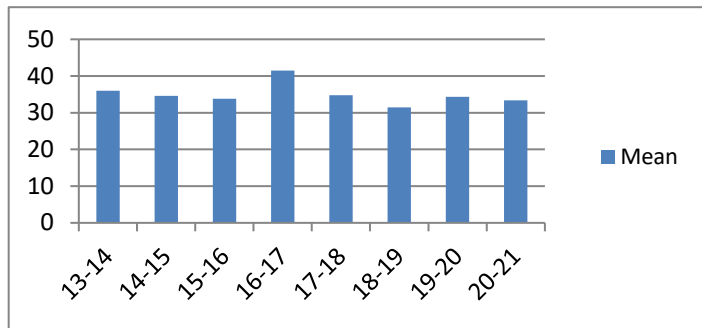
**Average Incarceration Length - Identity Theft - All Offenders**

Fiscal Year	Mean	Median	Standard Deviation	N
13-14	50.16	48.00	28.76	383
14-15	41.05	36.00	19.05	435
15-16	45.51	36.00	24.39	425
16-17	46.84	48.00	19.16	699
17-18	45.94	48.00	27.42	281
18-19	38.26	36.00	21.33	292
19-20	45.42	36.00	26.93	165
20-21	42.62	36.00	22.63	77



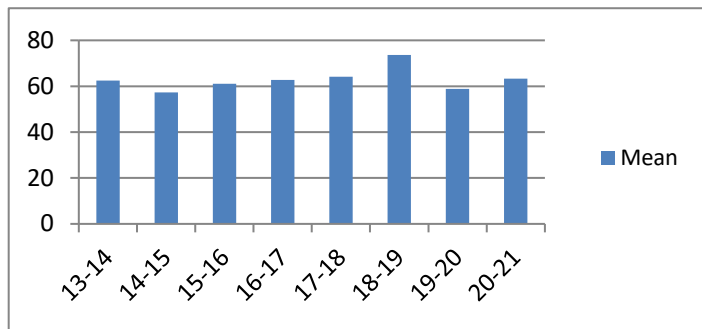
**Average Incarceration Length - Identity Theft - Standard Offenders**

Fiscal Year	Mean	Median	Standard Deviation	N
13-14	35.95	36.00	10.15	256
14-15	34.57	36.00	9.79	343
15-16	33.81	36.00	9.76	296
16-17	41.45	48.00	9.79	580
17-18	34.73	36.00	10.65	208
18-19	31.46	24.00	9.40	251
19-20	34.37	36.00	12.17	121
20-21	33.37	30.00	10.14	57



**Average Incarceration Length - Identity Theft - Multiple Offenders**

Fiscal Year	Mean	Median	Standard Deviation	N
13-14	62.48	48.00	16.62	92
14-15	57.32	48.00	17.59	76
15-16	61.02	60.00	13.71	94
16-17	62.72	60.00	17.87	97
17-18	64.11	66.00	17.20	54
18-19	73.67	72.00	21.11	36
19-20	58.80	48.00	17.92	30
20-21	63.33	72.00	20.91	18

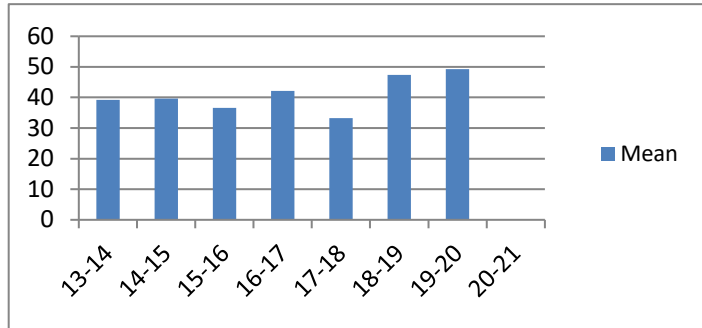


## Average Incarceration Lengths in Months by Felony Class and Offense

Note: Column N indicates the number of felony convictions. Individual offenders can have multiple convictions. Incarceration includes life without parole and death sentences. Probation includes sentences to community corrections.

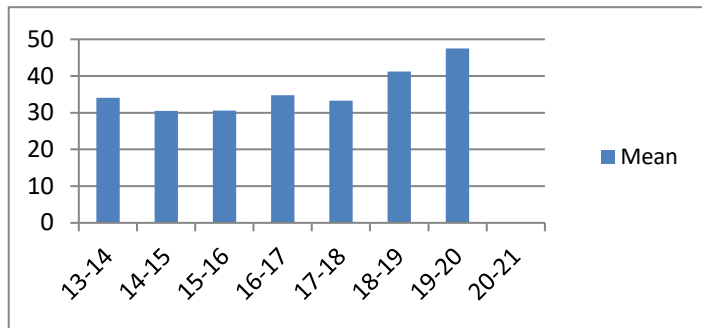
**Average Incarceration Length - Obtain Drugs by Fraud - All Offenders**

Fiscal Year	Mean	Median	Standard Deviation	N
13-14	39.25	36.00	18.09	146
14-15	39.67	36.00	22.32	131
15-16	36.65	36.00	18.26	188
16-17	42.13	36.00	21.63	46
17-18	33.29	36.00	10.14	31
18-19	47.33	48.00	19.51	18
19-20	49.31	48.00	11.70	55
20-21	.	.	.	0



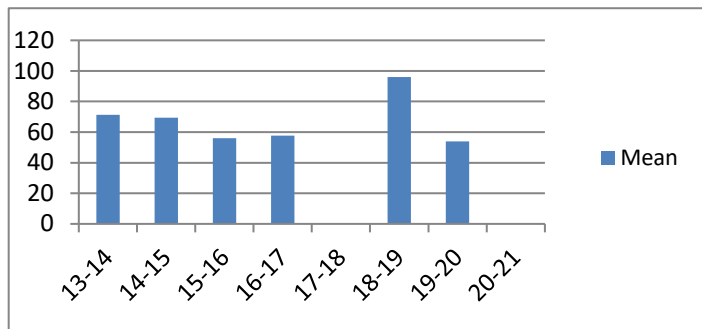
**Average Incarceration Length - Obtain Drugs by Fraud - Standard Offenders**

Fiscal Year	Mean	Median	Standard Deviation	N
13-14	34.08	36.00	10.16	128
14-15	30.46	24.02	8.63	106
15-16	30.61	24.03	7.58	160
16-17	34.80	36.00	8.95	35
17-18	33.29	36.00	10.14	31
18-19	41.25	48.00	8.73	16
19-20	47.54	48.00	2.33	52
20-21	.	.	.	0



**Average Incarceration Length - Obtain Drugs by Fraud - Multiple Offenders**

Fiscal Year	Mean	Median	Standard Deviation	N
13-14	71.25	72.00	13.48	16
14-15	69.47	72.00	11.01	19
15-16	56.00	48.00	14.10	15
16-17	57.60	48.00	20.24	10
17-18	.	.	.	0
18-19	96	96	0	2
19-20	54.00	54.00	8.49	2
20-21	.	.	.	0

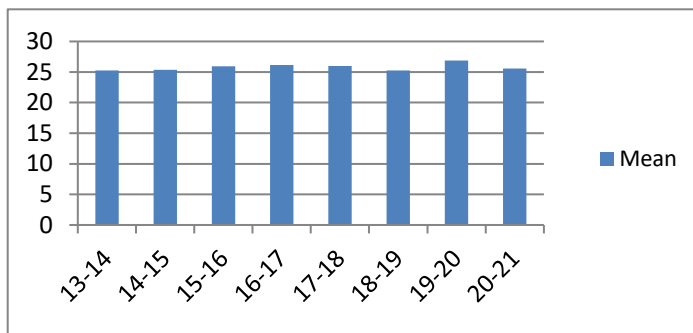


## Average Incarceration Lengths in Months by Felony Class and Offense

Note: Column N indicates the number of felony convictions. Individual offenders can have multiple convictions. Incarceration includes life without parole and death sentences. Probation includes sentences to community corrections.

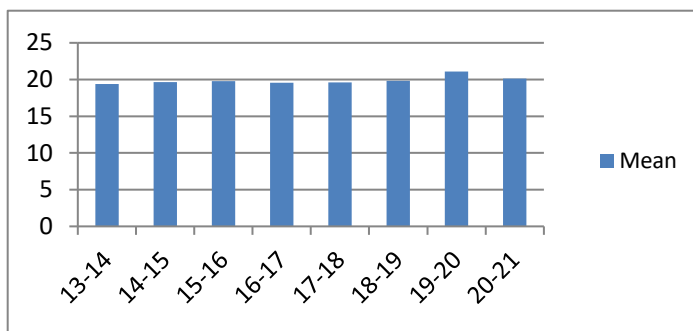
**Average Incarceration Length - Class E - All Offenders**

Fiscal Year	Mean	Median	Standard Deviation	N
13-14	25.25	24.00	15.08	7,499
14-15	25.37	24.00	13.88	6,390
15-16	25.94	24.00	13.94	6,469
16-17	26.17	24.00	14.48	6,091
17-18	25.98	24.00	14.46	5,817
18-19	25.28	24.00	13.74	5,011
19-20	26.86	24.00	14.40	3,559
20-21	25.58	24.00	13.99	2,330



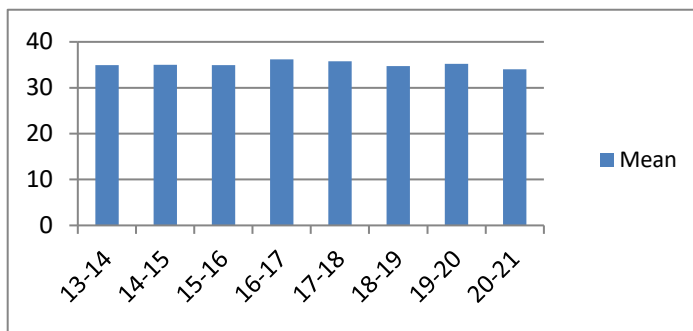
**Average Incarceration Length - Class E - Standard Offenders**

Fiscal Year	Mean	Median	Standard Deviation	N
13-14	19.37	24.00	6.84	5,602
14-15	19.67	24.00	6.93	4,693
15-16	19.78	24.00	6.35	4,546
16-17	19.56	24.00	6.25	4,352
17-18	19.63	24.00	6.43	4,244
18-19	19.85	24.00	6.65	3,743
19-20	21.07	24.00	7.53	2,608
20-21	20.11	24.00	7.57	1,682



**Average Incarceration Length - Class E - Multiple Offenders**

Fiscal Year	Mean	Median	Standard Deviation	N
13-14	34.94	36.00	10.58	1,392
14-15	35.01	36.00	10.54	1,279
15-16	34.95	36.00	11.18	1,487
16-17	36.21	36.00	11.04	1,248
17-18	35.80	36.00	10.23	1,124
18-19	34.70	36.00	10.64	950
19-20	35.24	36.00	10.38	683
20-21	34.00	36.00	10.44	494



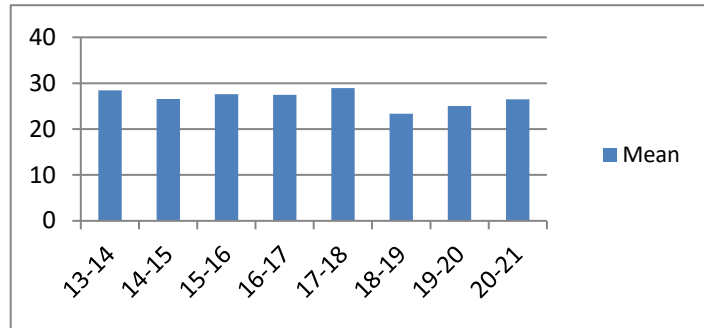


## Average Incarceration Lengths in Months by Felony Class and Offense

Note: Column N indicates the number of felony convictions. Individual offenders can have multiple convictions. Incarceration includes life without parole and death sentences. Probation includes sentences to community corrections.

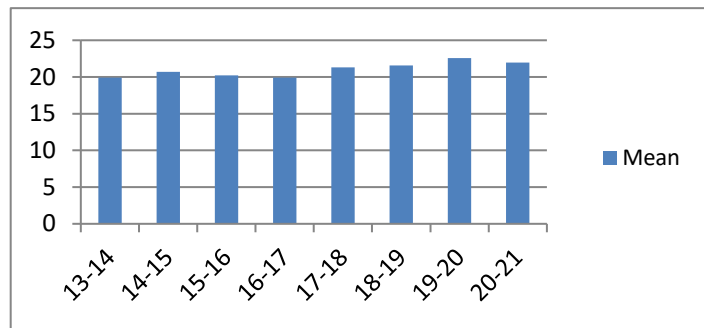
**Average Incarceration Length - Forgery: Up to \$1,000 - All Offenders**

Fiscal Year	Mean	Median	Standard Deviation	N
13-14	28.43	24.00	22.10	930
14-15	26.56	24.00	13.44	672
15-16	27.59	24.00	14.54	630
16-17	27.45	24.00	14.81	696
17-18	28.91	24.00	16.46	379
18-19	23.33	24.00	7.29	227
19-20	25.02	24.00	8.78	227
20-21	26.50	24.00	11.10	90



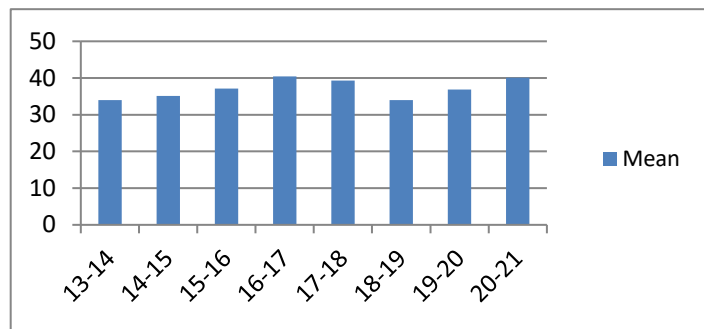
**Average Incarceration Length - Forgery: Up to \$1,000 - Standard Offenders**

Fiscal Year	Mean	Median	Standard Deviation	N
13-14	19.91	24.00	7.35	688
14-15	20.70	24.00	5.52	488
15-16	20.24	24.00	5.97	438
16-17	19.92	24.00	5.90	492
17-18	21.29	24.00	7.20	279
18-19	21.57	24.00	4.78	196
19-20	22.57	24.00	5.31	199
20-21	21.97	24.00	4.96	71



**Average Incarceration Length - Forgery: Up to \$1,000 - Multiple Offenders**

Fiscal Year	Mean	Median	Standard Deviation	N
13-14	33.95	36.00	9.92	138
14-15	35.12	36.00	10.60	132
15-16	37.13	36.00	9.29	133
16-17	40.46	48.00	11.61	136
17-18	39.32	36.00	8.08	65
18-19	34.00	36.00	10.01	30
19-20	36.86	36.00	9.94	14
20-21	40.06	36.00	5.71	17

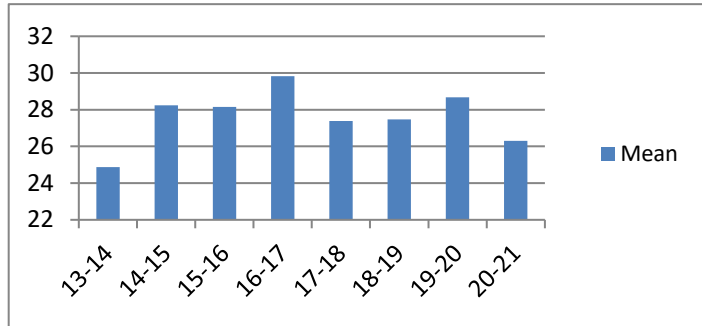


## Average Incarceration Lengths in Months by Felony Class and Offense

Note: Column N indicates the number of felony convictions. Individual offenders can have multiple convictions. Incarceration includes life without parole and death sentences. Probation includes sentences to community corrections.

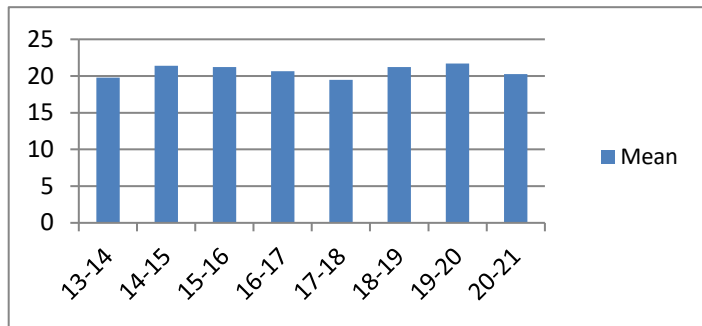
**Average Incarceration Length - Burglary: Auto - All Offenders**

Fiscal Year	Mean	Median	Standard Deviation	N
13-14	24.87	24.00	13.66	1,140
14-15	28.24	24.00	15.81	954
15-16	28.16	24.00	14.00	970
16-17	29.83	24.00	17.36	754
17-18	27.38	24.00	16.58	891
18-19	27.47	24.00	15.29	700
19-20	28.67	24.00	14.97	585
20-21	26.30	24.00	13.90	330



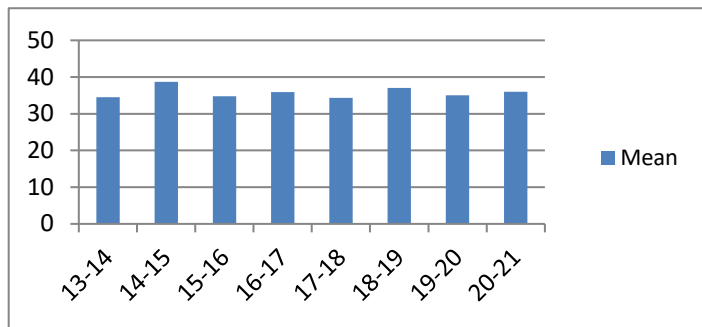
**Average Incarceration Length - Burglary: Auto - Standard Offenders**

Fiscal Year	Mean	Median	Standard Deviation	N
13-14	19.79	24.00	6.08	892
14-15	21.41	24.00	8.68	695
15-16	21.23	24.00	5.47	605
16-17	20.65	24.00	5.94	497
17-18	19.48	24.00	5.83	632
18-19	21.21	24.00	7.81	514
19-20	21.72	24.00	4.66	419
20-21	20.26	24.00	5.53	237



**Average Incarceration Length - Burglary: Auto - Multiple Offenders**

Fiscal Year	Mean	Median	Standard Deviation	N
13-14	34.51	36.00	10.14	175
14-15	38.67	42.00	10.17	173
15-16	34.79	36.00	12.56	301
16-17	35.89	36.00	10.74	151
17-18	34.29	36.00	10.59	144
18-19	37.03	36.00	10.91	131
19-20	35.07	36.00	10.19	97
20-21	36.00	36.00	10.64	64

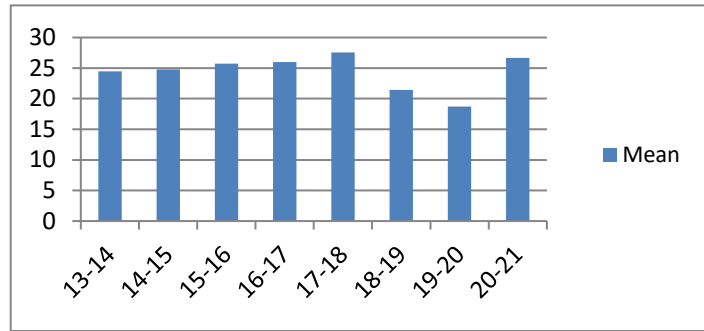


## Average Incarceration Lengths in Months by Felony Class and Offense

Note: Column N indicates the number of felony convictions. Individual offenders can have multiple convictions. Incarceration includes life without parole and death sentences. Probation includes sentences to community corrections.

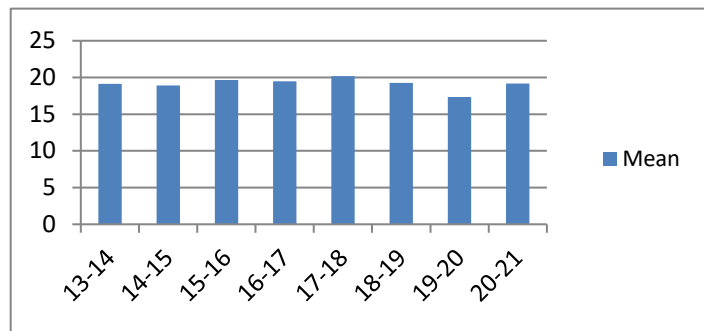
**Average Incarceration Length - Theft: \$500 - \$1,000 - All Offenders**

Fiscal Year	Mean	Median	Standard Deviation	N
13-14	24.47	24.00	13.55	1,072
14-15	24.79	24.00	14.34	934
15-16	25.75	24.00	14.21	934
16-17	26.00	24.00	14.34	814
17-18	27.55	24.00	15.10	347
18-19	21.45	24.00	9.41	160
19-20	18.72	12.00	8.65	67
20-21	26.65	24.00	16.79	34



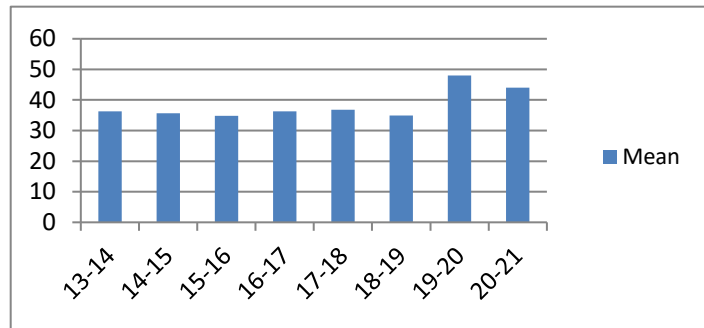
**Average Incarceration Length - Theft: \$500 - \$1,000 - Standard Offenders**

Fiscal Year	Mean	Median	Standard Deviation	N
13-14	19.13	24.00	6.13	832
14-15	18.89	24.00	6.17	705
15-16	19.67	24.00	6.46	670
16-17	19.47	24.00	6.28	590
17-18	20.19	24.00	7.32	236
18-19	19.27	24.00	5.82	141
19-20	17.34	12.00	5.96	64
20-21	19.15	24.00	6.79	26



**Average Incarceration Length - Theft: \$500 - \$1,000 - Multiple Offenders**

Fiscal Year	Mean	Median	Standard Deviation	N
13-14	36.33	36.00	10.23	179
14-15	35.60	36.00	10.66	163
15-16	34.82	30.00	12.20	199
16-17	36.23	36.00	10.40	161
17-18	36.80	36.00	11.08	83
18-19	34.94	36.00	12.04	17
19-20	48.00	48.00	0.00	3
20-21	44.00	48.00	12.39	6

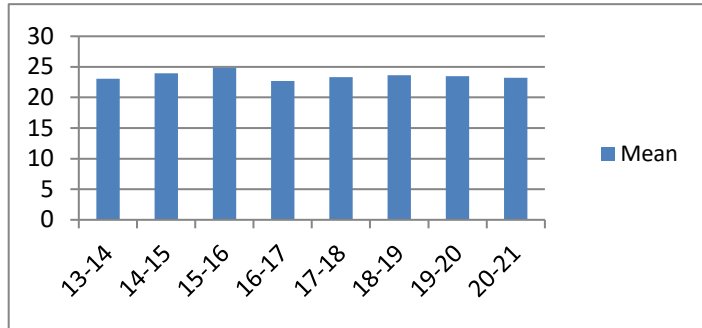


## Average Incarceration Lengths in Months by Felony Class and Offense

Note: Column N indicates the number of felony convictions. Individual offenders can have multiple convictions. Incarceration includes life without parole and death sentences. Probation includes sentences to community corrections.

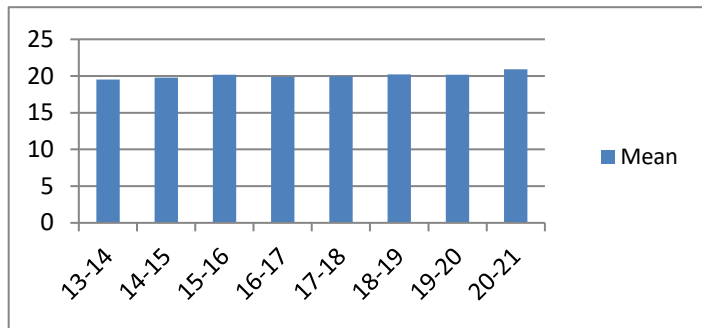
**Average Incarceration Length - Schedule VI Drugs:  
Not < 1/2 Ounce - All Offenders**

Fiscal Year	Mean	Median	Standard Deviation	N
13-14	23.05	24.00	11.64	669
14-15	23.93	24.00	11.21	552
15-16	24.83	24.00	12.37	454
16-17	22.69	24.00	10.38	371
17-18	23.33	24.00	10.87	332
18-19	23.64	24.00	12.26	307
19-20	23.46	24.00	10.23	169
20-21	23.20	24.00	9.44	87



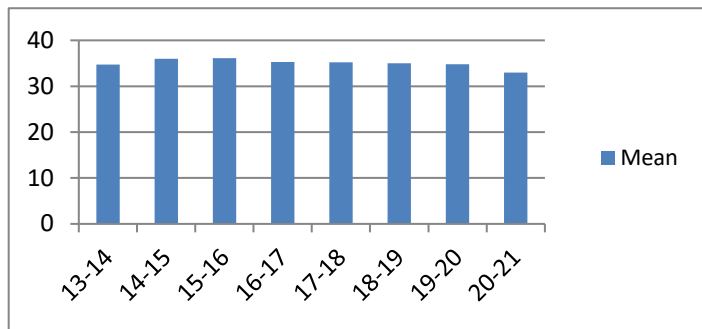
**Average Incarceration Length - Schedule VI Drugs:  
Not < 1/2 Ounce - Standard Offenders**

Fiscal Year	Mean	Median	Standard Deviation	N
13-14	19.50	24.00	6.70	548
14-15	19.78	24.00	6.16	427
15-16	20.16	24.00	6.15	340
16-17	19.87	24.00	6.10	312
17-18	19.95	24.00	6.10	274
18-19	20.24	24.00	7.50	259
19-20	20.18	24.00	5.45	137
20-21	20.91	24.00	5.62	73



**Average Incarceration Length - Schedule VI Drugs:  
Not < 1/2 Ounce - Multiple Offenders**

Fiscal Year	Mean	Median	Standard Deviation	N
13-14	34.75	36.00	10.47	101
14-15	35.95	36.00	10.25	111
15-16	36.13	36.00	10.35	93
16-17	35.27	36.00	10.72	49
17-18	35.22	36.00	10.09	46
18-19	35.03	36.00	9.85	37
19-20	34.76	36.00	10.44	29
20-21	33.00	36.00	11.58	12

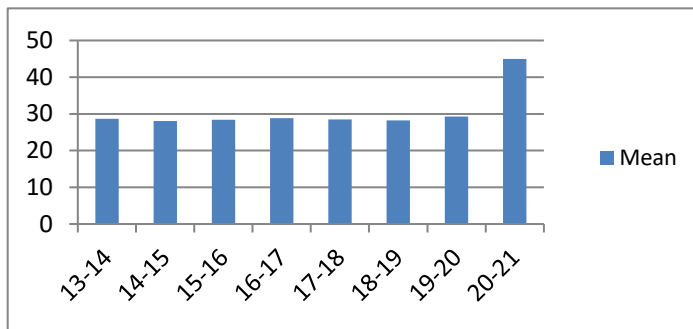


## Average Incarceration Lengths in Months by Felony Class and Offense

Note: Column N indicates the number of felony convictions. Individual offenders can have multiple convictions. Incarceration includes life without parole and death sentences. Probation includes sentences to community corrections.

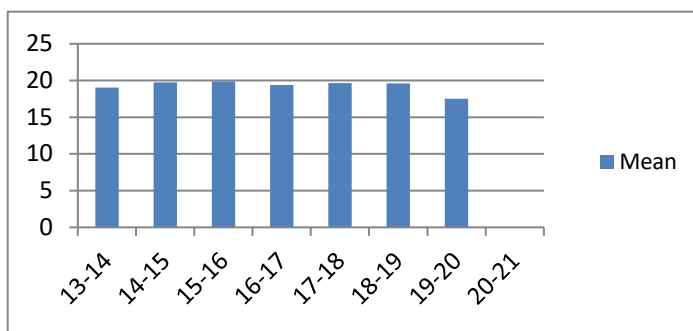
**Average Incarceration Length - Habitual Traffic Offender - All Offenders**

Fiscal Year	Mean	Median	Standard Deviation	N
13-14	28.64	24.00	15.95	398
14-15	28.08	24.00	14.42	321
15-16	28.39	24.00	15.06	312
16-17	28.86	24.00	15.49	284
17-18	28.51	24.00	14.22	262
18-19	28.25	24.00	15.37	219
19-20	29.25	24.00	16.34	24
20-21	45.00	45.00	12.73	2



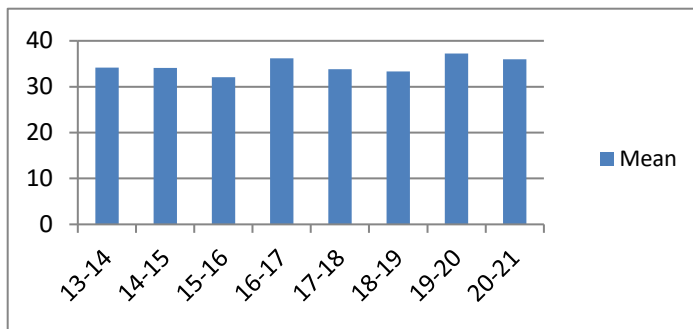
**Average Incarceration Length - Habitual Traffic Offender - Standard Offenders**

Fiscal Year	Mean	Median	Standard Deviation	N
13-14	19.03	18.00	6.27	229
14-15	19.74	24.00	6.40	185
15-16	19.86	24.00	5.48	174
16-17	19.38	24.00	5.66	170
17-18	19.67	24.00	5.54	142
18-19	19.60	24.00	6.13	131
19-20	17.50	15.00	5.98	12
20-21	.	.	.	0



**Average Incarceration Length - Habitual Traffic Offender - Multiple Offenders**

Fiscal Year	Mean	Median	Standard Deviation	N
13-14	34.14	36.00	9.87	116
14-15	34.07	36.00	10.24	104
15-16	32.04	30.00	9.40	105
16-17	36.21	36.00	10.45	77
17-18	33.80	36.00	9.13	94
18-19	33.34	36.00	9.41	56
19-20	37.20	42.00	11.93	10
20-21	36.00	36.00	.	1

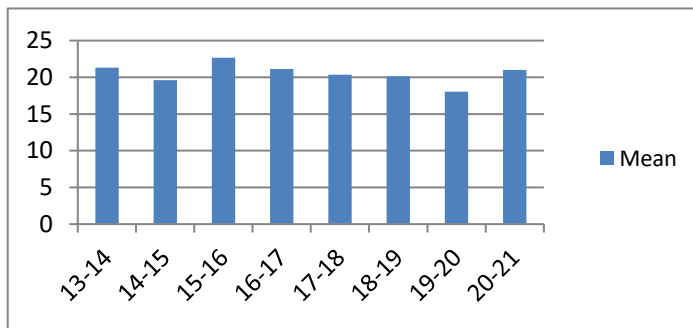


## Average Incarceration Lengths in Months by Felony Class and Offense

Note: Column N indicates the number of felony convictions. Individual offenders can have multiple convictions. Incarceration includes life without parole and death sentences. Probation includes sentences to community corrections.

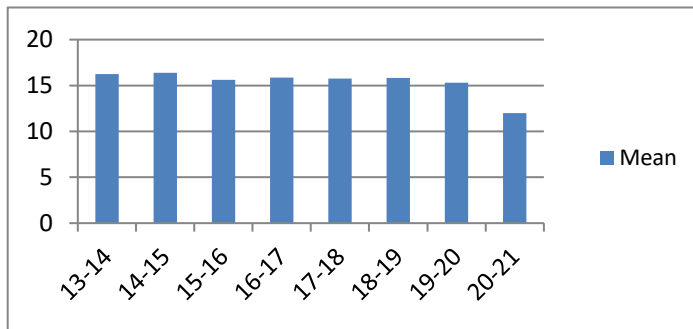
**Average Incarceration Length - Failure to Appear  
(Felony) - All Offenders**

Fiscal Year	Mean	Median	Standard Deviation	N
13-14	21.32	18.00	12.98	425
14-15	19.62	18.00	10.21	381
15-16	22.68	24.00	15.08	361
16-17	21.12	18.00	13.03	443
17-18	20.34	12.00	12.52	460
18-19	20.14	12.00	12.80	420
19-20	18.03	12.00	11.25	39
20-21	21.00	12.00	21.03	8



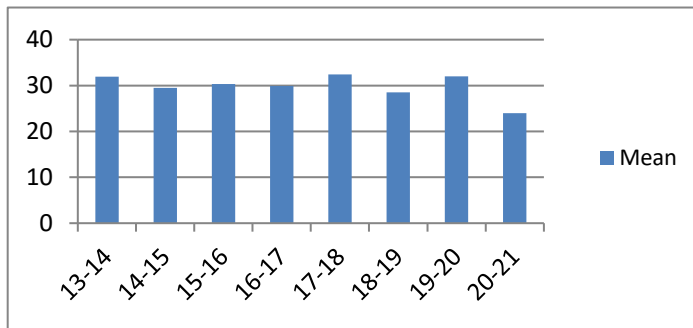
**Average Incarceration Length - Failure to Appear  
(Felony) - Standard Offenders**

Fiscal Year	Mean	Median	Standard Deviation	N
13-14	16.23	12.00	5.76	326
14-15	16.37	12.00	5.50	308
15-16	15.62	12.00	5.37	246
16-17	15.86	12.00	5.57	333
17-18	15.76	12.00	5.32	366
18-19	15.84	12.00	5.56	339
19-20	15.29	12.00	5.30	35
20-21	12.00	12.00	0.00	6



**Average Incarceration Length - Failure to Appear  
(Felony) - Multiple Offenders**

Fiscal Year	Mean	Median	Standard Deviation	N
13-14	31.94	24.00	10.21	77
14-15	29.50	24.00	8.71	64
15-16	30.35	24.00	9.49	86
16-17	29.91	24.00	9.03	80
17-18	32.43	24.00	10.36	74
18-19	28.50	24.00	8.35	56
19-20	32.00	36.00	6.93	3
20-21	24.00	24.00	.	1



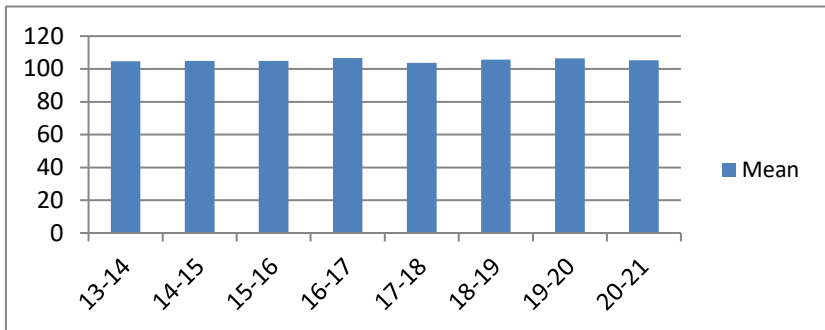
# Average Probation Lengths in Months by Felony Class

Note: Column N indicates the number of felony convictions. Individual offenders can have multiple convictions. Incarceration includes lifewithout parole and death sentences. Probation includes sentences to community corrections.

## Average Probation Length - Felony Class B - All Offenders

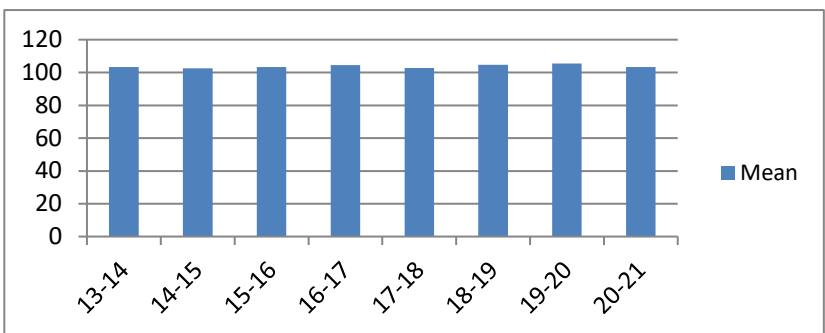
Fiscal Year	Mean	Median	Standard Deviation	N
13-14	104.74	96.00	20.11	476
14-15	104.92	96.00	20.24	542
15-16	104.93	96.00	16.62	500
16-17	106.54	96.00	22.56	474
17-18	103.67	96.00	16.81	679
18-19	105.64	96.00	17.47	859
19-20	106.46	96.00	19.51	981
20-21	105.21	96.00	19.08	977

included due to low occurrence frequencies.



## Average Probation Length - Felony Class B - Standard Offenders

Fiscal Year	Mean	Median	Standard Deviation	N
13-14	103.29	96.00	16.95	458
14-15	102.62	96.00	16.27	510
15-16	103.41	96.00	13.49	477
16-17	104.55	96.00	18.09	457
17-18	102.70	96.00	14.05	652
18-19	104.71	96.00	15.85	840
19-20	105.52	96.00	18.31	948
20-21	103.25	96.00	15.10	938



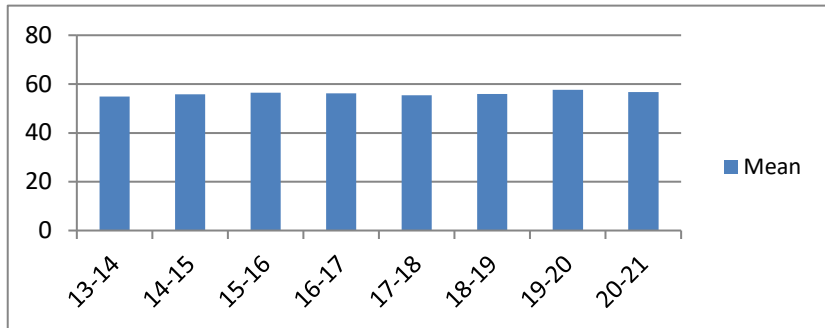
The table for multiple offenders was not included due to low occurrence frequencies.

# Average Probation Lengths in Months by Felony Class

Note: Column N indicates the number of felony convictions. Individual offenders can have multiple convictions. Incarceration includes lifewithout parole and death sentences. Probation includes sentences to community corrections.

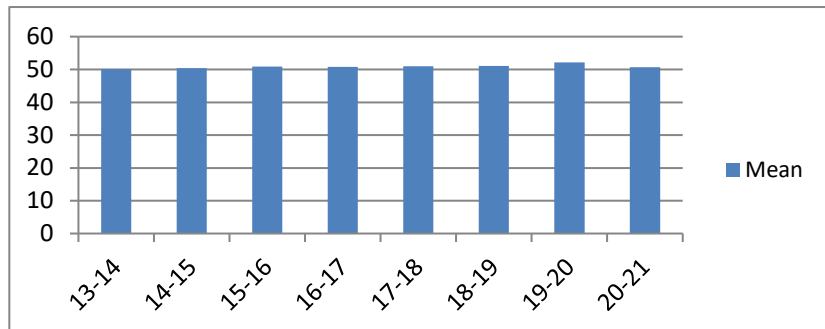
**Average Probation Length - Class C - All Offenders**

Fiscal Year	Mean	Median	Standard Deviation	N
13-14	54.84	48.00	24.12	2,365
14-15	55.79	48.00	23.31	2,093
15-16	56.43	48.00	23.63	2,363
16-17	56.22	48.00	22.61	2,566
17-18	55.40	48.00	21.24	2,731
18-19	55.99	48.00	22.36	2,894
19-20	57.64	48.00	22.14	3,011
20-21	56.67	48.00	23.05	2,646



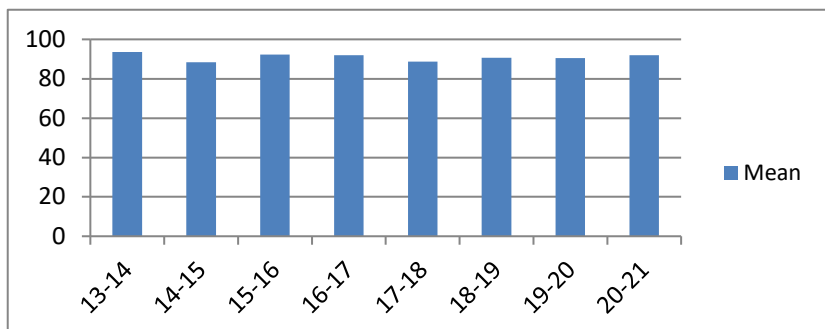
**Average Probation Length - Class C - Standard Offenders**

Fiscal Year	Mean	Median	Standard Deviation	N
13-14	50.11	48.00	18.54	2,130
14-15	50.43	48.00	17.85	1,815
15-16	50.87	48.00	17.30	2,053
16-17	50.78	48.00	16.22	2,249
17-18	50.93	48.00	16.28	2,428
18-19	51.05	48.00	17.17	2,555
19-20	52.19	48.00	16.43	2,590
20-21	50.69	48.00	16.01	2,281



**Average Probation Length - Class C - Multiple Offenders**

Fiscal Year	Mean	Median	Standard Deviation	N
13-14	93.52	96.00	23.74	204
14-15	88.41	84.00	22.58	235
15-16	92.29	96.00	18.31	242
16-17	91.94	96.00	22.46	278
17-18	88.67	84.00	20.93	272
18-19	90.65	96.00	20.34	304
19-20	90.56	96.00	20.86	379
20-21	91.92	96.00	20.31	312



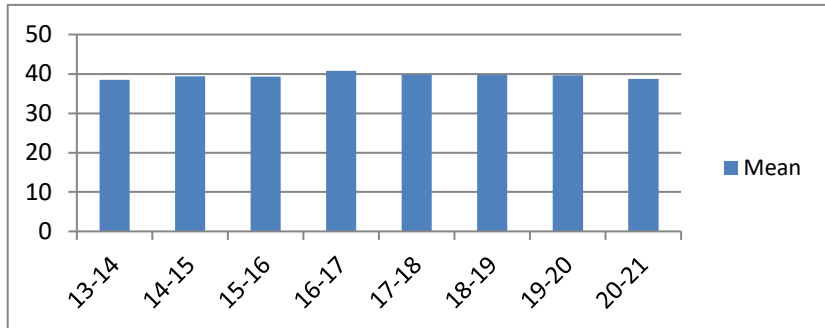


# Average Probation Lengths in Months by Felony Class

Note: Column N indicates the number of felony convictions. Individual offenders can have multiple convictions. Incarceration includes lifewithout parole and death sentences. Probation includes sentences to community corrections.

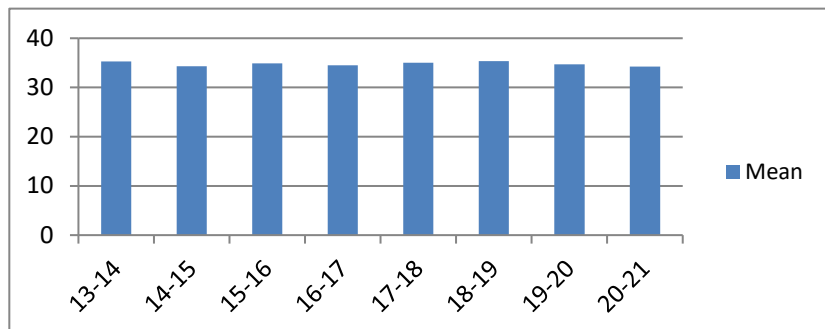
**Average Probation Length - Class D - All Offenders**

Fiscal Year	Mean	Median	Standard Deviation	N
13-14	38.48	36.00	20.83	3,346
14-15	39.36	36.00	19.89	3,148
15-16	39.29	36.00	19.14	2,839
16-17	40.76	36.00	21.60	2,960
17-18	39.77	36.00	18.56	2,708
18-19	39.68	36.00	20.62	2,628
19-20	39.62	36.00	19.10	2,598
20-21	38.77	36.00	18.57	2,442



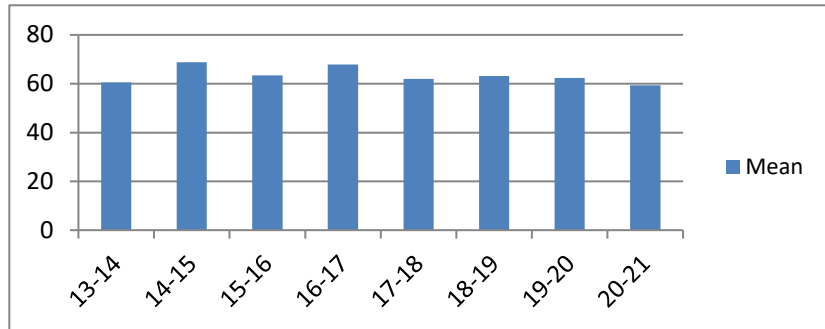
**Average Probation Length - Class D - Standard Offenders**

Fiscal Year	Mean	Median	Standard Deviation	N
13-14	35.30	36.00	16.28	3,050
14-15	34.32	36.00	12.59	2,741
15-16	34.92	36.00	13.61	2,485
16-17	34.53	36.00	13.17	2,505
17-18	35.04	36.00	11.45	2,338
18-19	35.35	36.00	15.36	2,303
19-20	34.73	36.00	12.14	2,235
20-21	34.22	36.00	11.51	2,115



**Average Probation Length - Class D - Multiple Offenders**

Fiscal Year	Mean	Median	Standard Deviation	N
13-14	60.54	60.00	19.64	234
14-15	68.73	66.00	23.32	348
15-16	63.45	60.00	18.52	286
16-17	67.90	72.00	19.51	364
17-18	62.02	60.00	18.20	304
18-19	63.19	60.00	19.51	271
19-20	62.40	60.00	19.18	299
20-21	59.40	48.00	16.59	264

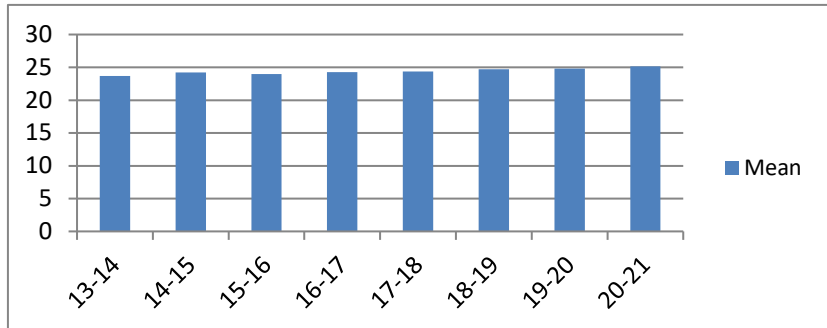


# Average Probation Lengths in Months by Felony Class

Note: Column N indicates the number of felony convictions. Individual offenders can have multiple convictions. Incarceration includes lifewithout parole and death sentences. Probation includes sentences to community corrections.

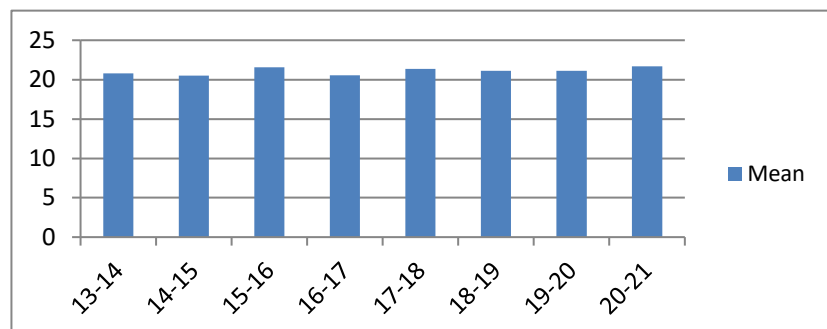
**Average Probation Length - Class E - All Offenders**

Fiscal Year	Mean	Median	Standard Deviation	N
13-14	23.69	24.00	12.67	3,731
14-15	24.20	24.00	13.80	3,474
15-16	23.96	24.00	11.97	3,526
16-17	24.26	24.00	13.15	3,384
17-18	24.36	24.00	13.33	3,664
18-19	24.73	24.00	14.18	3,814
19-20	24.83	24.00	12.60	3,337
20-21	25.13	24.00	12.39	2,526



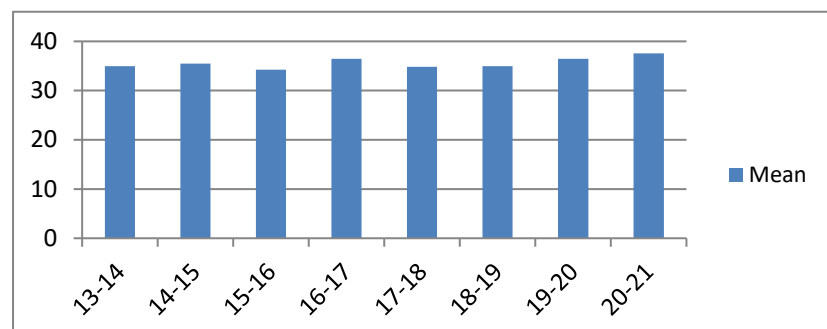
**Average Probation Length - Class E - Standard Offenders**

Fiscal Year	Mean	Median	Standard Deviation	N
13-14	20.80	24.00	9.06	3,197
14-15	20.51	24.00	10.10	2,831
15-16	21.55	24.00	8.93	3,048
16-17	20.56	24.00	8.35	2,824
17-18	21.35	24.00	9.56	3,108
18-19	21.12	24.00	9.95	3,175
19-20	21.14	24.00	7.63	2,768
20-21	21.68	24.00	7.49	2,128



**Average Probation Length - Class E - Multiple Offenders**

Fiscal Year	Mean	Median	Standard Deviation	N
13-14	34.95	36.00	10.97	417
14-15	35.49	36.00	10.63	499
15-16	34.22	36.00	10.59	394
16-17	36.49	36.00	10.61	430
17-18	34.85	36.00	11.27	432
18-19	34.99	36.00	10.55	477
19-20	36.46	36.00	9.94	418
20-21	37.54	36.00	10.46	289

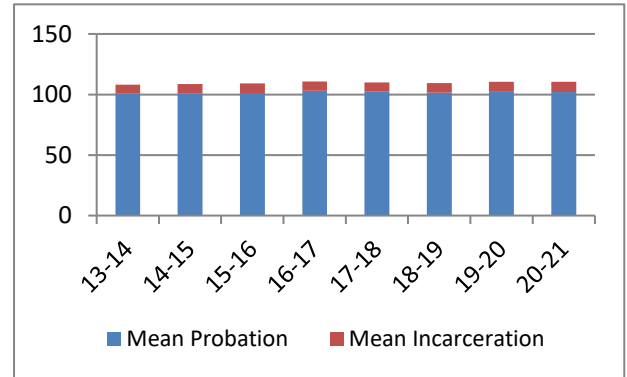


## Average Split Sentence Lengths in Months by Felony Class

Note: Column N indicates the number of felony convictions. Individual offenders can have multiple convictions. Incarceration includes life without parole and death sentences. Probation includes sentences to community corrections.

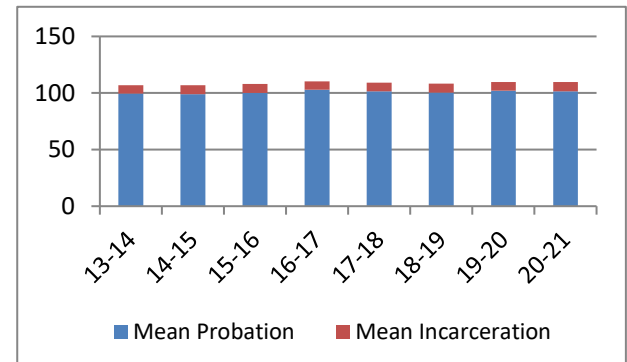
**Average Sentence Length - Felony Class B - All Offenders**

Fiscal Year	Months of Incarceration				Months of Probation			
	Mean	Median	Standard Deviation	N	Mean	Median	Standard Deviation	N
13-14	7.2	6.0	4.2	340	100.9	96.0	18.1	340
14-15	7.8	9.0	4.2	408	100.8	96.0	20.4	408
15-16	8.1	9.0	4.2	396	101.2	96.0	17.4	396
16-17	7.5	6.0	4.2	668	103.2	96.0	15.1	668
17-18	7.7	6.0	4.1	715	102.2	96.0	16.4	715
18-19	8.0	8.9	4.2	895	101.6	96.0	17.8	895
19-20	7.6	6.0	4.5	826	102.9	96.0	18.0	826
20-21	8.3	11.3	4.1	739	102.1	96.0	15.8	739



**Average Sentence Length - Felony Class B - Standard Offenders**

Fiscal Year	Months of Incarceration				Months of Probation			
	Mean	Median	Standard Deviation	N	Mean	Median	Standard Deviation	N
13-14	7.2	6.0	4.1	330	99.6	96.0	15.6	330
14-15	7.8	9.0	4.2	387	99.0	96.0	17.4	387
15-16	8.0	9.0	4.1	381	100.0	96.0	15.6	381
16-17	7.5	6.0	4.2	660	102.8	96.0	14.6	660
17-18	7.6	6.0	4.1	700	101.6	96.0	14.6	700
18-19	7.9	8.2	4.2	870	100.4	96.0	15.8	870
19-20	7.6	6.0	4.5	803	102.0	96.0	15.7	803
20-21	8.3	11.4	4.1	724	101.4	96.0	14.3	724



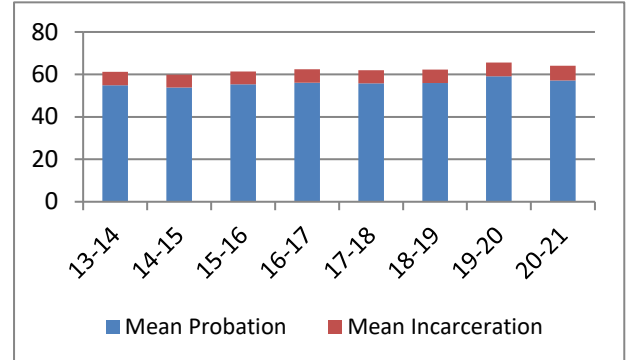
The table for multiple offenders was not included due to low occurrence frequencies.

## Average Split Sentence Lengths in Months by Felony Class

Note: Column N indicates the number of felony convictions. Individual offenders can have multiple convictions. Incarceration includes life without parole and death sentences. Probation includes sentences to community corrections.

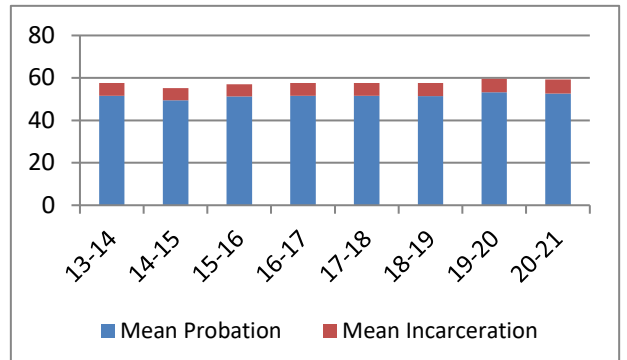
**Average Sentence Length - Class C - All Offenders**

Fiscal Year	Months of Incarceration				Months of Probation			
	Mean	Median	Standard Deviation	N	Mean	Median	Standard Deviation	N
13-14	6.2	5.9	4.2	1,360	54.9	48.0	21.6	1,360
14-15	6.0	5.0	4.2	1,247	53.8	48.0	22.1	1,247
15-16	6.0	5.9	4.1	1,397	55.4	48.0	21.7	1,397
16-17	6.3	5.9	4.1	1,627	56.2	49.0	23.3	1,627
17-18	6.3	5.9	4.2	1,811	55.8	48.0	21.9	1,811
18-19	6.5	5.9	4.3	1,952	55.9	48.0	22.1	1,952
19-20	6.6	5.9	4.2	1,608	59.1	60.0	23.5	1,608
20-21	6.9	6.0	4.3	1,352	57.2	60.0	21.9	1,352



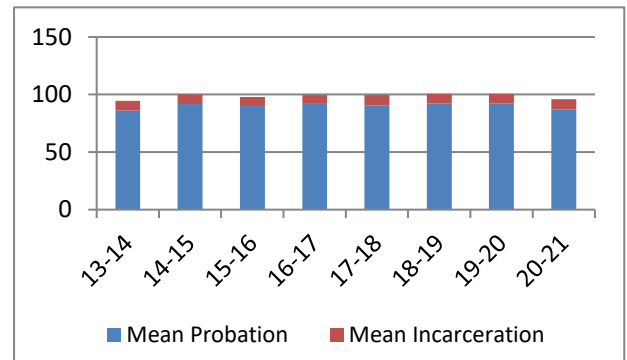
**Average Sentence Length - Class C - Standard Offenders**

Fiscal Year	Months of Incarceration				Months of Probation			
	Mean	Median	Standard Deviation	N	Mean	Median	Standard Deviation	N
13-14	6.0	5.9	4.1	1,236	51.5	48.0	18.2	1,236
14-15	5.8	4.9	4.1	1,111	49.5	48.0	16.9	1,111
15-16	5.7	5.0	4.0	1,258	51.2	48.0	17.4	1,258
16-17	6.1	5.9	4.0	1,449	51.5	48.0	17.5	1,449
17-18	6.0	5.9	4.1	1,628	51.6	48.0	17.9	1,628
18-19	6.2	5.9	4.2	1,751	51.4	48.0	17.2	1,751
19-20	6.2	5.9	4.1	1,378	53.3	48.0	17.7	1,378
20-21	6.6	5.9	4.2	1,192	52.7	48.0	17.0	1,192



**Average Sentence Length - Class C - Multiple Offenders**

Fiscal Year	Months of Incarceration				Months of Probation			
	Mean	Median	Standard Deviation	N	Mean	Median	Standard Deviation	N
13-14	8.3	12.0	4.3	106	86.3	84.0	20.5	106
14-15	8.2	11.0	4.3	118	91.8	96.0	25.5	118
15-16	7.8	9.9	4.5	125	90.1	96.0	20.4	125
16-17	7.1	6.0	4.2	157	92.5	96.0	26.3	157
17-18	8.7	12.0	4.3	166	90.7	96.0	18.5	166
18-19	8.3	9.0	4.8	178	92.4	96.0	20.2	178
19-20	8.4	11.5	4.2	200	92.3	94.5	21.6	200
20-21	8.7	12.0	4.0	134	87.1	84.0	18.5	134

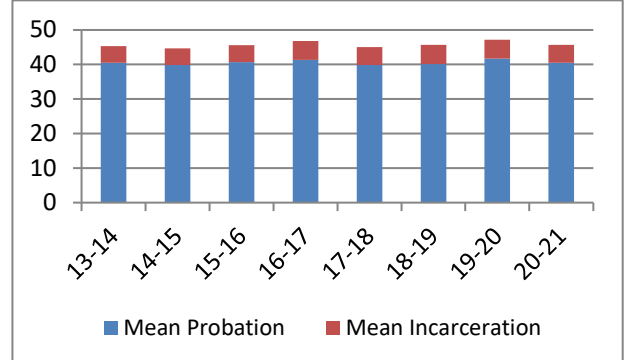


## Average Split Sentence Lengths in Months by Felony Class

Note: Column N indicates the number of felony convictions. Individual offenders can have multiple convictions. Incarceration includes life without parole and death sentences. Probation includes sentences to community corrections.

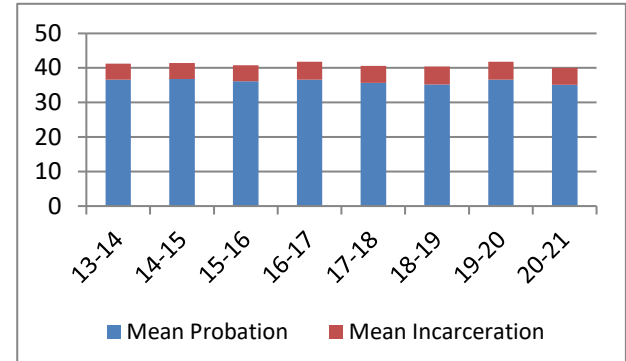
**Average Sentence Length - Class D - All Offenders**

Fiscal Year	Months of Incarceration				Months of Probation			
	Mean	Median	Standard Deviation	N	Mean	Median	Standard Deviation	N
13-14	4.9	3.5	3.9	1,456	40.5	36.0	19.3	1,456
14-15	4.8	3.5	3.8	1,346	39.9	36.0	18.6	1,346
15-16	4.9	3.9	3.8	1,326	40.6	36.0	19.8	1,326
16-17	5.4	3.9	4.0	1,376	41.4	36.0	21.6	1,376
17-18	5.2	3.9	4.0	1,257	39.9	36.0	18.6	1,257
18-19	5.5	4.0	4.0	1,345	40.2	36.0	19.6	1,345
19-20	5.5	4.0	4.5	1,183	41.7	36.0	20.0	1,183
20-21	5.2	3.9	3.9	942	40.5	36.0	20.3	942



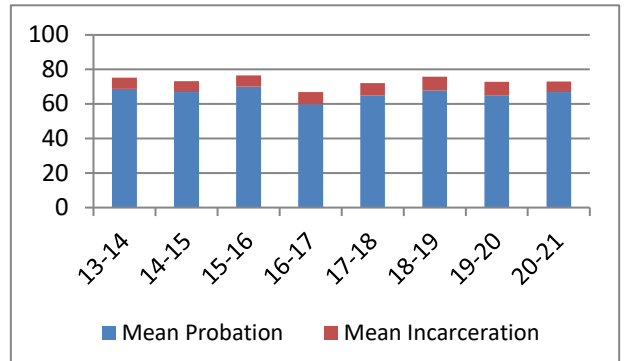
**Average Sentence Length - Class D - Standard Offenders**

Fiscal Year	Months of Incarceration				Months of Probation			
	Mean	Median	Standard Deviation	N	Mean	Median	Standard Deviation	N
13-14	4.6	3.0	3.8	1,302	36.6	36.0	14.6	1,302
14-15	4.6	3.1	3.6	1,223	36.8	36.0	15.3	1,223
15-16	4.6	3.0	3.7	1,173	36.2	36.0	13.9	1,173
16-17	5.1	3.9	3.9	1,199	36.6	36.0	14.4	1,199
17-18	4.9	3.9	3.8	1,102	35.7	36.0	13.1	1,102
18-19	5.2	3.9	3.9	1,167	35.2	36.0	12.5	1,167
19-20	5.1	3.9	4.4	1,013	36.7	36.0	13.1	1,013
20-21	4.9	3.9	3.8	811	35.1	36.0	11.7	811



**Average Sentence Length - Class D - Multiple Offenders**

Fiscal Year	Months of Incarceration				Months of Probation			
	Mean	Median	Standard Deviation	N	Mean	Median	Standard Deviation	N
13-14	6.5	6.0	4.5	123	68.8	72.0	19.3	123
14-15	6.4	6.0	4.8	110	66.8	67.5	17.0	110
15-16	6.3	6.0	3.7	121	70.1	67.3	20.6	121
16-17	7.0	6.0	4.3	131	59.9	60.0	20.6	131
17-18	7.2	6.0	4.4	131	64.8	60.0	19.2	131
18-19	8.1	9.8	4.1	160	67.8	72.0	21.1	160
19-20	7.6	6.7	4.1	141	65.1	60.0	21.6	141
20-21	6.1	4.9	4.0	102	67.0	72.0	21.6	102

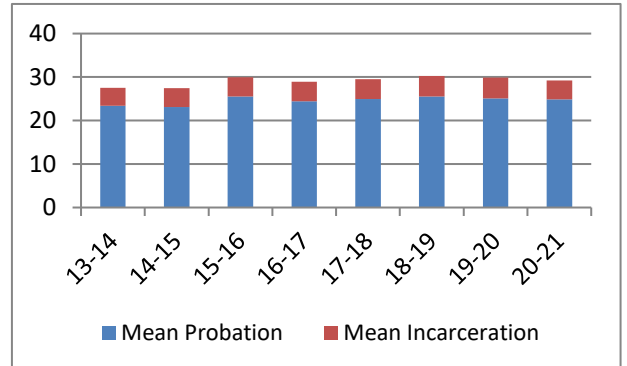


## Average Split Sentence Lengths in Months by Felony Class

Note: Column N indicates the number of felony convictions. Individual offenders can have multiple convictions. Incarceration includes life without parole and death sentences. Probation includes sentences to community corrections.

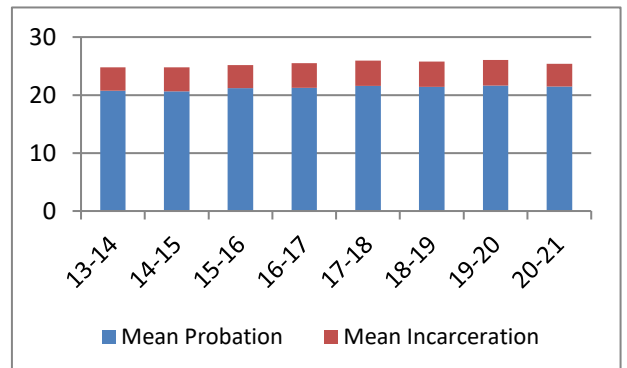
**Average Sentence Length - Class E - All Offenders**

Fiscal Year	Months of Incarceration				Months of Probation			
	Mean	Median	Standard Deviation	N	Mean	Median	Standard Deviation	N
13-14	4.2	3.0	3.2	1,452	23.4	24.0	13.6	1,452
14-15	4.3	3.3	3.3	1,533	23.1	24.0	13.4	1,533
15-16	4.4	3.0	3.4	1,607	25.5	24.0	18.2	1,607
16-17	4.5	3.0	3.4	1,740	24.4	24.0	14.4	1,740
17-18	4.6	3.6	3.4	1,727	24.9	24.0	13.2	1,727
18-19	4.7	3.9	3.6	1,783	25.6	24.0	14.8	1,783
19-20	4.8	3.9	3.6	1,425	25.1	24.0	14.7	1,425
20-21	4.4	3.0	3.5	1,036	24.8	24.0	13.4	1,036



**Average Sentence Length - Class E - Standard Offenders**

Fiscal Year	Months of Incarceration				Months of Probation			
	Mean	Median	Standard Deviation	N	Mean	Median	Standard Deviation	N
13-14	4.0	3.0	3.1	1,260	20.8	22.9	11.5	1,260
14-15	4.1	3.0	3.2	1,322	20.6	22.5	11.3	1,322
15-16	3.9	3.0	3.0	1,340	21.2	23.4	11.6	1,340
16-17	4.2	3.0	3.3	1,471	21.3	24.0	10.9	1,471
17-18	4.4	3.3	3.2	1,447	21.6	24.0	10.2	1,447
18-19	4.4	3.0	3.3	1,442	21.4	24.0	10.5	1,442
19-20	4.4	3.1	3.4	1,186	21.6	24.0	11.3	1,186
20-21	4.0	3.0	3.2	856	21.5	24.0	9.6	856



**Average Sentence Length - Class E - Multiple Offenders**

Fiscal Year	Months of Incarceration				Months of Probation			
	Mean	Median	Standard Deviation	N	Mean	Median	Standard Deviation	N
13-14	4.8	4.9	3.3	151	35.7	36.0	10.8	151
14-15	5.2	4.0	3.7	177	36.5	36.0	12.2	177
15-16	6.6	5.9	4.4	213	43.8	36.0	28.6	213
16-17	5.9	4.9	3.7	216	37.2	36.0	12.6	216
17-18	5.9	4.9	4.0	237	38.6	36.0	10.9	237
18-19	5.8	5.9	4.2	255	36.5	36.0	12.9	255
19-20	6.3	5.9	4.0	177	35.9	36.0	12.6	177
20-21	6.0	5.0	4.1	139	35.4	36.0	11.8	139

