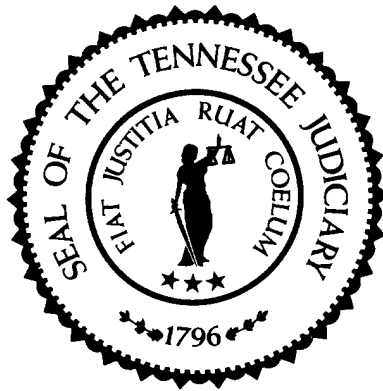


Sentencing Practices in Tennessee



Administrative Office of the Courts

Information for Cases Sentenced Between
July 1, 2007 and December 31, 2014

TDOC Data Extracted: March 2015
Released: April 2015

Sentencing Practices in Tennessee Contents

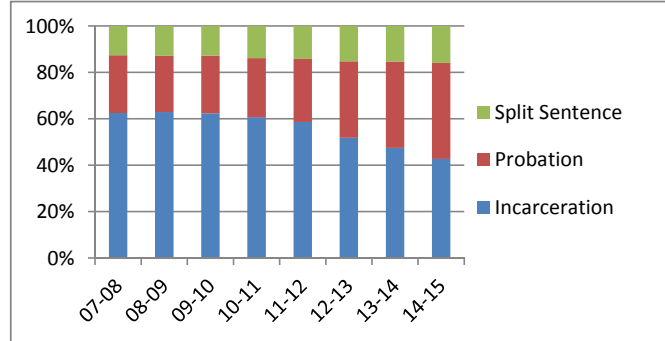
Sentence Type Information	
Class A	1
Class B	1
Class C	2
Class D	2
Class E	2
Average Incarceration Lengths in Months	
Class A	3
Rape of Child	4
Second Degree Murder	4
Especially Aggravated Kidnapping	5
Class B	6
Schedule II Cocaine	7
Aggravated Robbery	8
Aggravated Sexual Battery	9
Class C	9
Aggravated Burglary	10
Aggravated Assault	11
Schedule II Cocaine < ½ Gram	12
Schedule II Drugs: Max \$100,000 Fine	13
Class D	14
Theft: \$1,000 to \$10,000	15
Burglary Other Than Habitation	16
Identity Theft	17
Obtain Drugs by Fraud	18
Class E	19
Forgery: Up to \$1,000	20
Burglary: Auto	21
Theft: \$500 to \$1,000	22
Schedule VI Drugs: Not < ½ Ounce	23
Habitual Traffic Offender	24
Failure to Appear (Felony)	25
Average Probation Lengths in Months	
Class B	27
Class C	27
Class D	28
Class E	29
Average Split Sentence Lengths in Months	
Class B	31
Class C	31
Class D	32
Class E	33

Sentence Type Information

Note: Column N indicates the number of felony convictions. Individual offenders can have multiple convictions. Incarceration includes life without parole and death sentences. Probation includes sentences to community corrections.

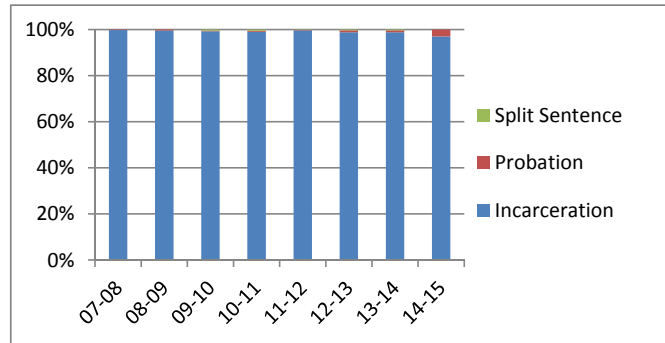
Percent of Sentence Type - All Felony Classes - All Offenders

Fiscal Year	Incarceration	Probation	Split Sentence	N
	Percent	Percent	Percent	
07-08	62.5%	24.8%	12.6%	40,831
08-09	62.9%	24.2%	12.9%	40,831
09-10	62.4%	24.9%	12.7%	41,866
10-11	60.7%	25.5%	13.8%	43,474
11-12	58.7%	27.1%	14.2%	43,000
12-13	51.8%	33.0%	15.2%	40,045
13-14	47.5%	37.2%	15.3%	36,559
14-15	42.7%	41.3%	15.9%	16,288



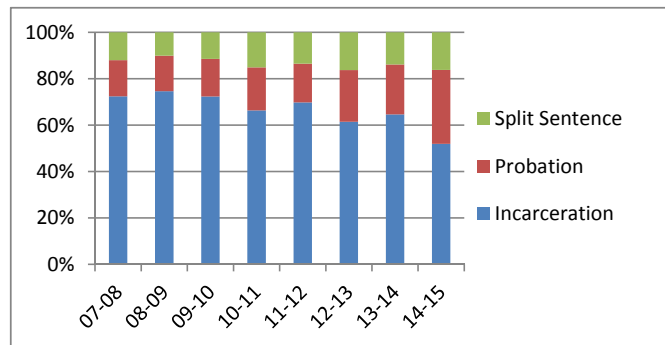
Percent of Sentence Type - Felony Class A - All Offenders

Fiscal Year	Incarceration	Probation	Split Sentence	N
	Percent	Percent	Percent	
07-08	99.8%	0.2%	0.0%	457
08-09	99.6%	0.4%	0.0%	712
09-10	99.3%	0.3%	0.4%	671
10-11	99.1%	0.4%	0.6%	529
11-12	99.7%	0.2%	0.2%	644
12-13	98.8%	0.9%	0.3%	585
13-14	98.8%	0.8%	0.3%	595
14-15	97.0%	3.0%	0.0%	201



Percent of Sentence Type - Felony Class B - All Offenders

Fiscal Year	Incarceration	Probation	Split Sentence	N
	Percent	Percent	Percent	
07-08	72.4%	15.6%	12.0%	3,903
08-09	74.6%	15.3%	10.1%	3,796
09-10	72.4%	16.2%	11.4%	3,743
10-11	66.3%	18.5%	15.1%	3,833
11-12	69.8%	16.7%	13.5%	3,854
12-13	61.4%	22.3%	16.3%	3,434
13-14	64.6%	21.6%	13.8%	3,056
14-15	51.9%	31.9%	16.2%	1,364

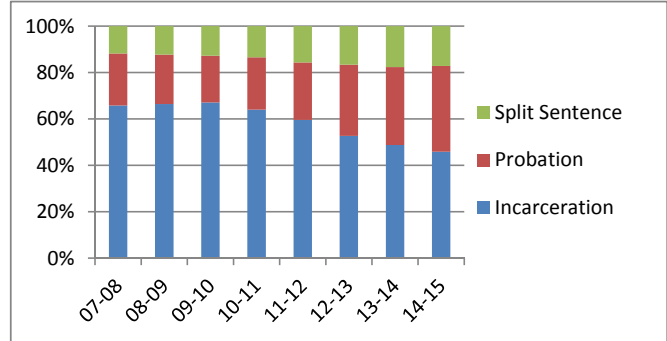


Sentence Type Information

Note: Column N indicates the number of felony convictions. Individual offenders can have multiple convictions. Incarceration includes life without parole and death sentences. Probation includes sentences to community corrections.

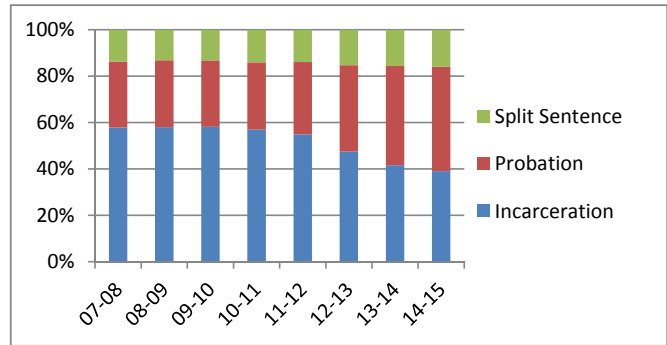
Percent of Sentence Type - Felony Class C - All Offenders

Fiscal Year	Incarceration	Probation	Split Sentence	N
	Percent	Percent	Percent	
07-08	65.8%	22.4%	11.8%	10,196
08-09	66.4%	21.3%	12.3%	10,042
09-10	67.1%	20.1%	12.8%	10,728
10-11	64.0%	22.5%	13.5%	11,561
11-12	59.6%	24.8%	15.7%	11,495
12-13	52.7%	30.7%	16.6%	10,354
13-14	48.7%	33.6%	17.6%	9,673
14-15	45.9%	36.9%	17.2%	4,136



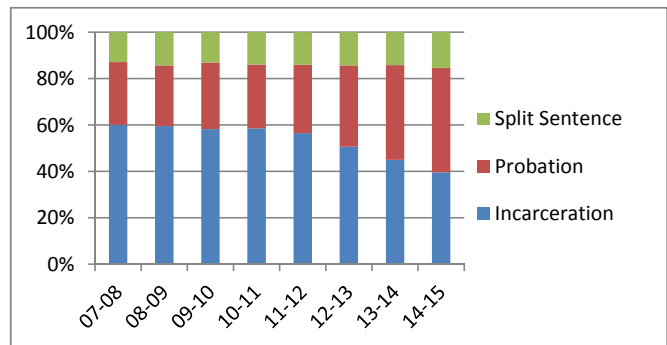
Percent of Sentence Type - Felony Class D - All Offenders

Fiscal Year	Incarceration	Probation	Split Sentence	N
	Percent	Percent	Percent	
07-08	57.8%	28.4%	13.8%	10,608
08-09	58.0%	28.8%	13.2%	10,843
09-10	58.1%	28.7%	13.2%	12,088
10-11	56.9%	29.0%	14.1%	12,682
11-12	54.9%	31.2%	14.0%	13,099
12-13	47.5%	37.2%	15.3%	12,148
13-14	41.6%	42.7%	15.7%	10,945
14-15	39.0%	44.9%	16.0%	5,128



Percent of Sentence Type - Felony Class E - All Offenders

Fiscal Year	Incarceration	Probation	Split Sentence	N
	Percent	Percent	Percent	
07-08	60.1%	27.0%	12.9%	15,667
08-09	59.5%	26.2%	14.3%	15,438
09-10	58.2%	28.7%	13.1%	14,636
10-11	58.6%	27.5%	14.0%	14,869
11-12	56.5%	29.4%	14.0%	13,908
12-13	50.6%	35.0%	14.3%	13,524
13-14	45.0%	40.8%	14.2%	12,290
14-15	39.6%	45.0%	15.4%	5,459

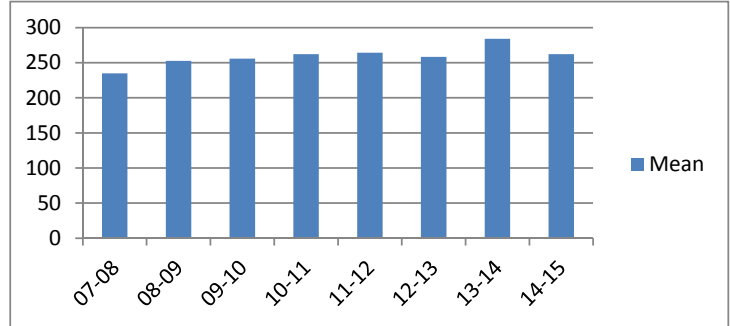


Average Incarceration Lengths in Months by Felony Class and Offense

Note: Column N indicates the number of felony convictions. Individual offenders can have multiple convictions. Incarceration includes life without parole and death sentences. Probation includes sentences to community corrections.

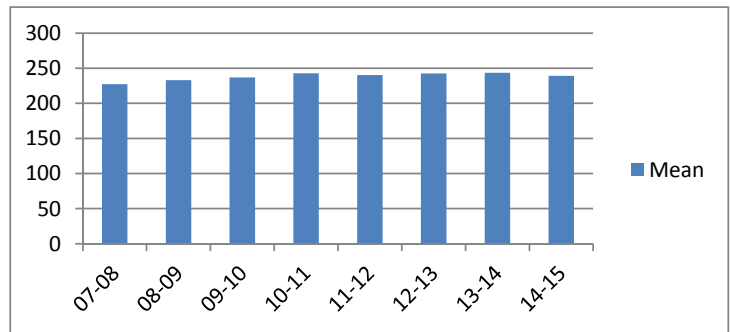
Average Incarceration Length - Class A - All Offenders

Fiscal Year	Mean	Median	Standard Deviation	N
07-08	234.96	216.00	75.94	454
08-09	252.74	240.00	87.93	704
09-10	255.83	240.00	88.02	663
10-11	262.12	240.00	91.79	522
11-12	264.36	240.00	93.92	640
12-13	258.43	240.00	83.10	575
13-14	283.98	264.00	118.05	588
14-15	262.30	240.00	91.58	194



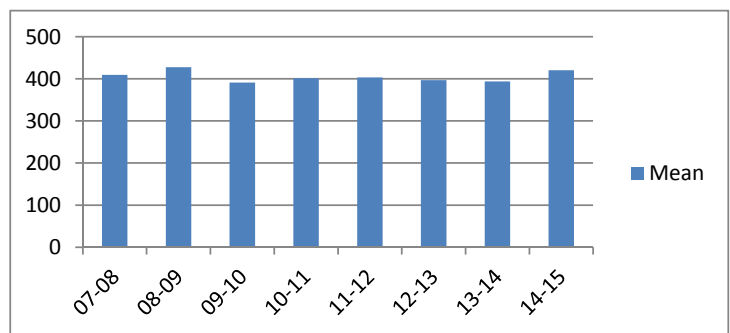
Average Incarceration Length - Class A - Standard Offenders

Fiscal Year	Mean	Median	Standard Deviation	N
07-08	227.26	216.00	46.36	395
08-09	233.07	240.00	46.79	597
09-10	237.01	240.00	50.80	540
10-11	242.89	240.00	49.19	429
11-12	240.24	240.00	48.18	494
12-13	242.71	240.00	50.06	481
13-14	243.49	240.00	48.83	422
14-15	239.14	240.00	57.57	153



Average Incarceration Length - Class A - Multiple Offenders

Fiscal Year	Mean	Median	Standard Deviation	N
07-08	409.20	408.00	62.40	20
08-09	427.64	480.00	60.37	66
09-10	391.07	384.00	67.64	73
10-11	401.19	396.00	62.50	52
11-12	403.26	390.00	56.42	76
12-13	396.84	420.00	86.53	57
13-14	393.87	384.00	75.71	107
14-15	420.46	420.00	53.50	26



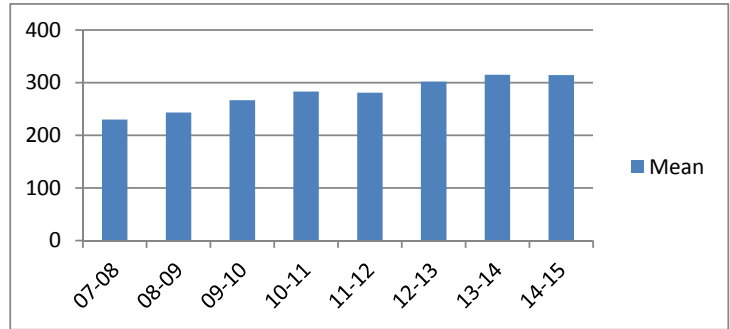
Average Incarceration Lengths in Months by Felony Class and Offense

Note: Column N indicates the number of felony convictions. Individual offenders can have multiple convictions. Incarceration includes life without parole and death sentences. Probation includes sentences to community corrections.

Average Incarceration Length - Rape of a Child - All Offenders

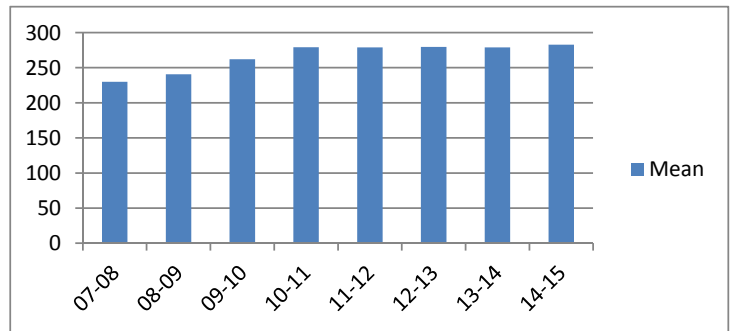
Fiscal Year	Mean	Median	Standard Deviation	N
07-08	229.88	216.00	44.20	121
08-09	243.07	240.00	38.40	201
09-10	266.60	300.00	49.27	129
10-11	283.13	300.00	47.07	90
11-12	280.99	300.00	41.09	101
12-13	301.90	300.00	65.82	82
13-14	314.79	300.00	69.97	112
14-15	314.29	300.00	66.32	34

The table for multiple offenders was not included due to low occurrence frequencies.



Average Incarceration Length - Rape of a Child - Standard Offenders

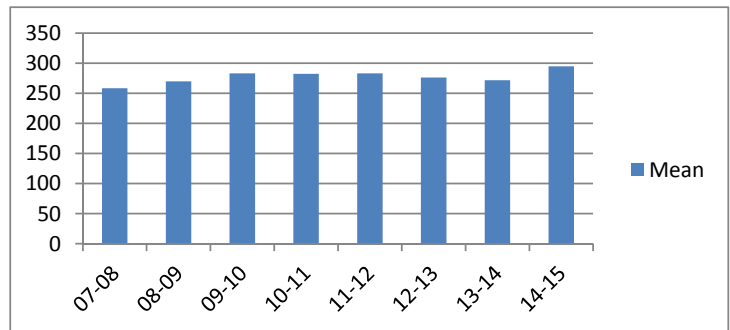
Fiscal Year	Mean	Median	Standard Deviation	N
07-08	229.88	216.00	44.20	121
08-09	240.70	240.00	32.67	198
09-10	262.05	300.00	45.79	123
10-11	279.07	300.00	30.66	84
11-12	279.00	300.00	36.08	100
12-13	279.71	300.00	42.25	68
13-14	279.00	300.00	41.71	76
14-15	282.86	300.00	43.03	21



Average Incarceration Length - Second Degree Murder - All Offenders

Fiscal Year	Mean	Median	Standard Deviation	N
07-08	258.49	240.00	83.88	86
08-09	269.82	240.00	94.85	116
09-10	283.23	252.00	96.30	127
10-11	282.34	258.00	96.33	107
11-12	283.02	240.00	102.48	118
12-13	276.21	270.00	92.03	84
13-14	271.66	270.00	73.57	94
14-15	294.75	300.00	113.42	24

The table for multiple offenders was not included due to low occurrence frequencies.

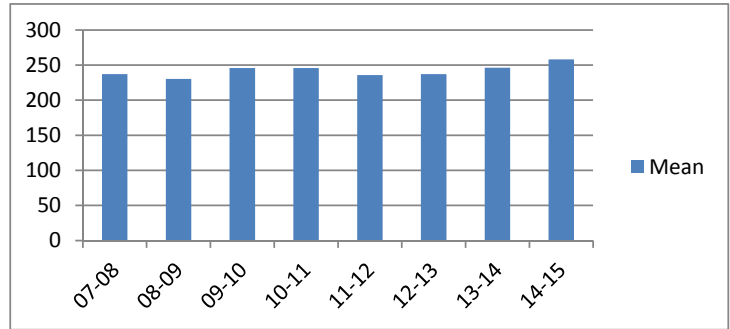


Average Incarceration Lengths in Months by Felony Class and Offense

Note: Column N indicates the number of felony convictions. Individual offenders can have multiple convictions. Incarceration includes life without parole and death sentences. Probation includes sentences to community corrections.

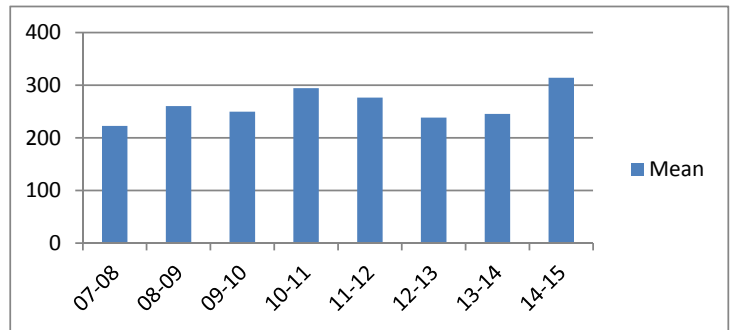
Average Incarceration Length - Second Degree Murder - Standard Offenders

Fiscal Year	Mean	Median	Standard Deviation	N
07-08	237.17	240.00	50.22	72
08-09	230.23	240.00	41.20	90
09-10	245.66	240.00	44.98	89
10-11	245.76	240.00	42.62	74
11-12	235.67	240.00	44.38	79
12-13	237.19	240.00	49.31	62
13-14	246.16	240.00	47.31	74
14-15	258.00	252.00	44.95	18



Average Incarceration Length - Especially Aggravated Kidnapping - All Offenders

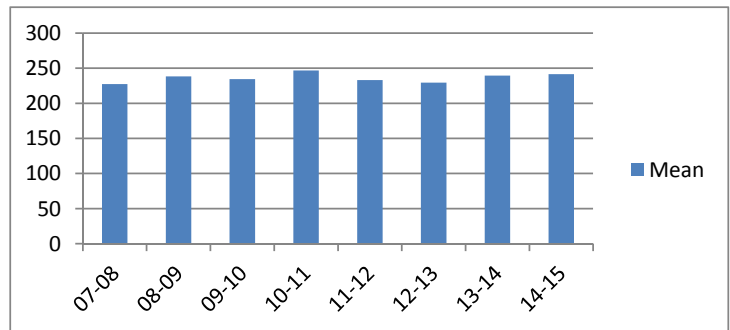
Fiscal Year	Mean	Median	Standard Deviation	N
07-08	222.43	222.00	71.63	28
08-09	260.28	240.00	104.00	79
09-10	249.54	240.00	100.85	56
10-11	294.37	264.00	121.94	49
11-12	276.20	240.00	116.91	88
12-13	238.17	240.00	67.58	69
13-14	245.16	240.00	87.77	43
14-15	314.09	300.00	121.61	23



The table for multiple offenders was not included due to low occurrence frequencies.

Average Incarceration Length - Especially Aggravated Kidnapping - Standard Offenders

Fiscal Year	Mean	Median	Standard Deviation	N
07-08	227.45	240.00	44.20	22
08-09	238.37	240.00	52.33	59
09-10	234.55	240.00	50.61	44
10-11	246.90	246.00	47.76	40
11-12	233.00	240.00	45.04	66
12-13	229.35	240.00	47.26	62
13-14	239.38	240.00	44.73	39
14-15	241.50	252.00	56.77	16

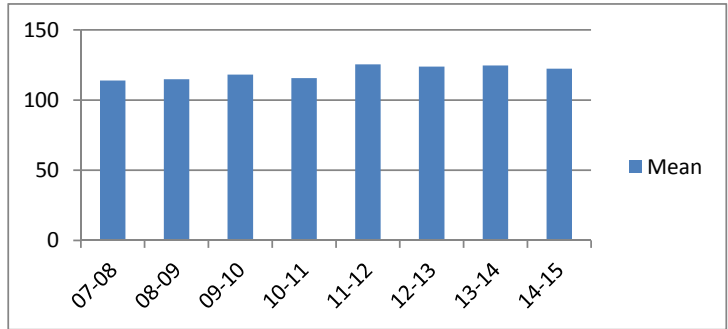


Average Incarceration Lengths in Months by Felony Class and Offense

Note: Column N indicates the number of felony convictions. Individual offenders can have multiple convictions. Incarceration includes life without parole and death sentences. Probation includes sentences to community corrections.

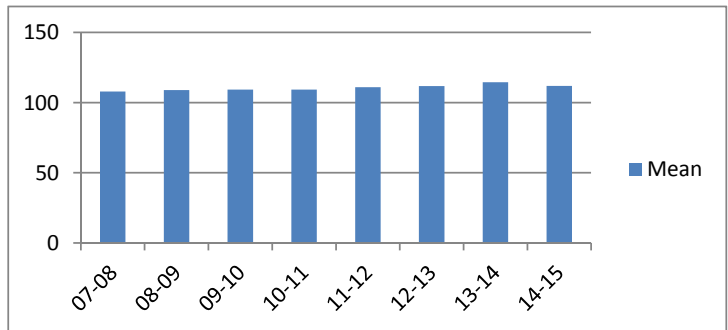
Average Incarceration Length - Felony Class B - All Offenders

Fiscal Year	Mean	Median	Standard Deviation	N
07-08	113.95	96.00	35.27	2,825
08-09	114.86	96.00	33.82	2,831
09-10	118.12	96.00	39.70	2,701
10-11	115.60	96.00	35.24	2,541
11-12	125.38	120.00	45.92	2,686
12-13	123.81	108.00	44.96	2,109
13-14	124.65	120.00	41.92	1,974
14-15	122.34	108.00	40.76	708



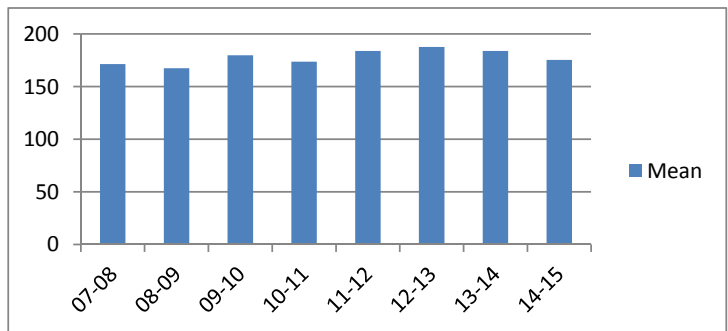
Average Incarceration Length - Felony Class B - Standard Offenders

Fiscal Year	Mean	Median	Standard Deviation	N
07-08	107.83	96.00	17.41	2,384
08-09	108.92	96.00	17.83	2,388
09-10	109.28	96.00	19.65	2,177
10-11	109.31	96.00	18.53	2,066
11-12	110.99	96.00	20.35	2,068
12-13	111.80	108.00	19.12	1,747
13-14	114.51	108.00	21.31	1,647
14-15	111.83	108.00	21.06	575



Average Incarceration Length - Felony Class B - Multiple Offenders

Fiscal Year	Mean	Median	Standard Deviation	N
07-08	171.39	168.00	34.65	213
08-09	167.37	156.00	35.33	227
09-10	179.68	180.00	37.64	284
10-11	173.67	168.00	36.89	214
11-12	183.78	180.00	35.86	411
12-13	187.64	180.00	42.01	219
13-14	183.88	180.00	40.52	198
14-15	175.31	180.00	43.29	96

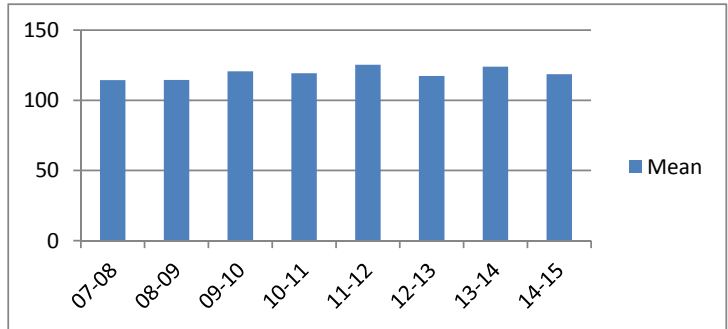


Average Incarceration Lengths in Months by Felony Class and Offense

Note: Column N indicates the number of felony convictions. Individual offenders can have multiple convictions. Incarceration includes life without parole and death sentences. Probation includes sentences to community corrections.

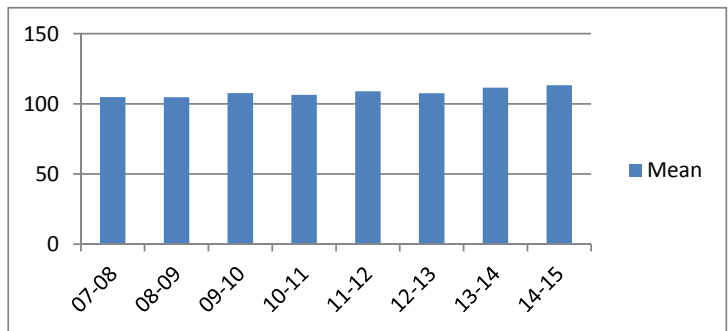
Average Incarceration Length - Schedule II Cocaine - All Offenders

Fiscal Year	Mean	Median	Standard Deviation	N
07-08	114.31	96.00	39.08	958
08-09	114.45	96.00	33.11	773
09-10	120.64	96.00	45.85	605
10-11	119.33	99.00	38.51	466
11-12	125.32	108.00	48.47	476
12-13	117.33	108.00	32.37	367
13-14	123.93	120.00	40.21	296
14-15	118.53	108.00	33.58	113



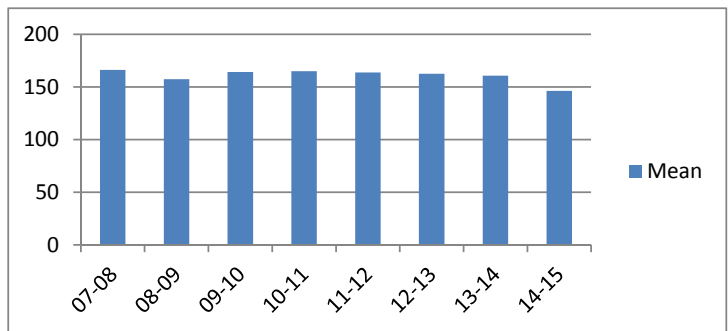
Average Incarceration Length - Schedule II Cocaine - Standard Offenders

Fiscal Year	Mean	Median	Standard Deviation	N
07-08	104.76	96.00	15.91	846
08-09	104.73	96.00	14.60	654
09-10	107.65	96.00	21.39	497
10-11	106.37	96.00	17.16	380
11-12	108.86	96.00	22.49	373
12-13	107.57	96.00	18.98	296
13-14	111.51	96.00	21.22	234
14-15	113.27	108.00	25.03	98



Average Incarceration Length - Schedule II Cocaine - Multiple Offenders

Fiscal Year	Mean	Median	Standard Deviation	N
07-08	166.18	156.00	35.00	84
08-09	157.40	144.00	27.98	103
09-10	164.18	144.00	41.86	88
10-11	164.96	156.00	33.80	71
11-12	163.67	144.00	35.45	86
12-13	162.48	144.00	39.45	62
13-14	160.65	144.00	32.01	49
14-15	146.18	144.00	40.81	11

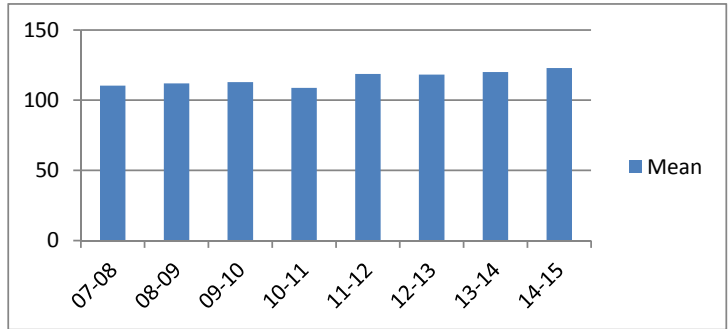


Average Incarceration Lengths in Months by Felony Class and Offense

Note: Column N indicates the number of felony convictions. Individual offenders can have multiple convictions. Incarceration includes life without parole and death sentences. Probation includes sentences to community corrections.

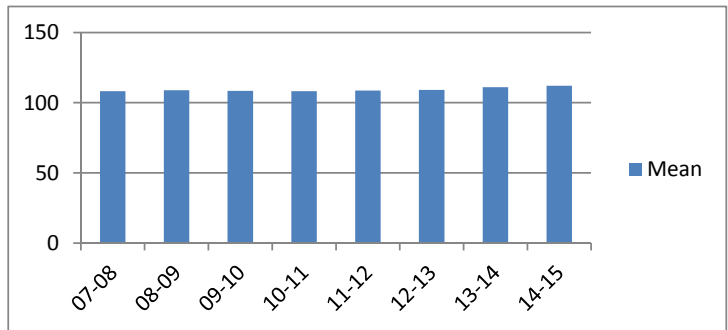
Average Incarceration Length - Aggravated Robbery - All Offenders

Fiscal Year	Mean	Median	Standard Deviation	N
07-08	110.36	96.00	34.92	813
08-09	111.97	96.00	34.21	919
09-10	112.87	96.00	36.54	907
10-11	108.75	96.00	30.08	749
11-12	118.66	96.00	48.32	636
12-13	118.24	96.00	45.88	511
13-14	120.10	96.00	43.12	498
14-15	122.95	96.00	47.18	182



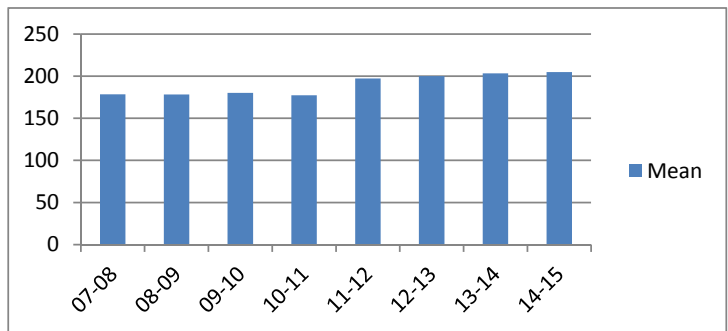
Average Incarceration Length - Aggravated Robbery - Standard Offenders

Fiscal Year	Mean	Median	Standard Deviation	N
07-08	108.24	96.00	17.04	617
08-09	108.85	96.00	17.31	702
09-10	108.39	96.00	20.66	654
10-11	108.18	96.00	17.15	558
11-12	108.64	96.00	18.01	458
12-13	109.07	96.00	17.74	403
13-14	111.00	96.00	18.02	406
14-15	112.08	96.00	21.92	147



Average Incarceration Length - Aggravated Robbery - Multiple Offenders

Fiscal Year	Mean	Median	Standard Deviation	N
07-08	178.46	180.00	36.02	39
08-09	178.22	174.00	39.17	54
09-10	180.08	180.00	38.80	74
10-11	177.25	174.00	36.26	24
11-12	197.14	180.00	34.99	56
12-13	200.00	192.00	37.55	33
13-14	203.37	216.00	34.08	38
14-15	204.75	186.00	30.43	16



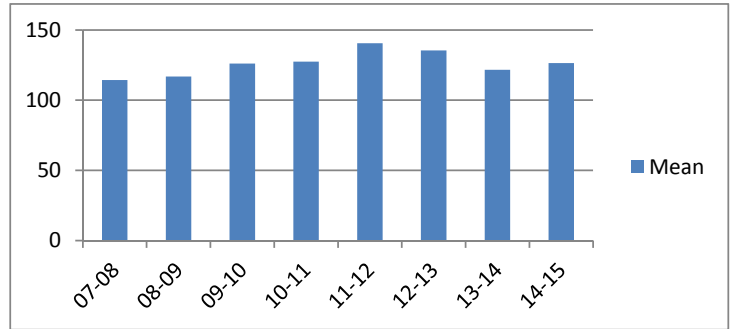
Average Incarceration Lengths in Months by Felony Class and Offense

Note: Column N indicates the number of felony convictions. Individual offenders can have multiple convictions. Incarceration includes life without parole and death sentences. Probation includes sentences to community corrections.

Average Incarceration Length - Aggravated Sexual Battery - All Offenders

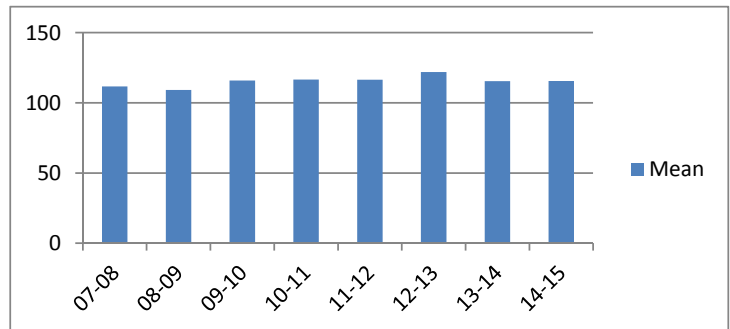
Fiscal Year	Mean	Median	Standard Deviation	N
07-08	114.32	108.00	22.57	166
08-09	116.87	96.00	30.18	191
09-10	126.13	120.00	31.38	182
10-11	127.46	120.00	34.27	201
11-12	140.59	120.00	39.65	384
12-13	135.39	132.00	38.45	215
13-14	121.67	120.00	34.08	189
14-15	126.42	120.00	37.01	83

The table for multiple offenders was not included due to low occurrence frequencies.



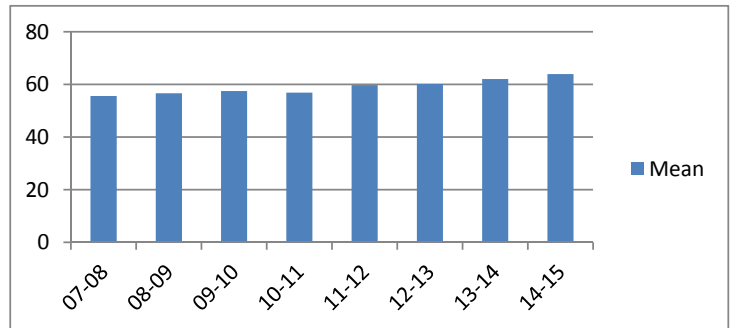
Average Incarceration Length - Aggravated Sexual Battery - Standard Offenders

Fiscal Year	Mean	Median	Standard Deviation	N
07-08	111.69	102.00	18.67	156
08-09	109.20	96.00	17.93	170
09-10	115.84	120.00	18.38	153
10-11	116.60	120.00	18.18	173
11-12	116.48	120.00	15.96	252
12-13	121.92	120.00	19.25	178
13-14	115.38	120.00	18.20	169
14-15	115.54	120.00	18.74	70



Average Incarceration Length - Class C - All Offenders

Fiscal Year	Mean	Median	Standard Deviation	N
07-08	55.61	48.00	24.32	6,704
08-09	56.63	48.00	24.29	6,666
09-10	57.52	48.00	27.16	7,200
10-11	56.92	48.00	25.43	7,401
11-12	59.74	48.00	29.21	6,847
12-13	60.17	48.00	29.28	5,456
13-14	62.04	60.00	29.53	4,715
14-15	63.97	60.00	33.63	1,897

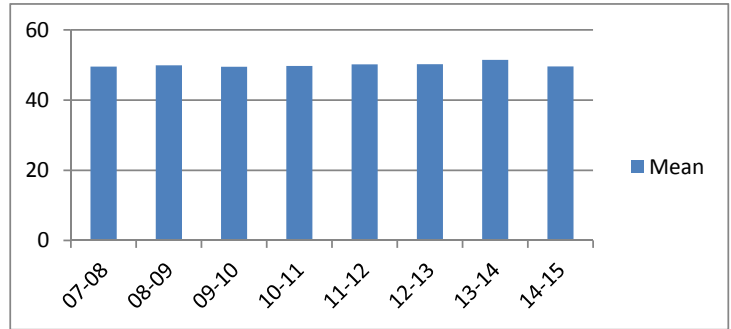


Average Incarceration Lengths in Months by Felony Class and Offense

Note: Column N indicates the number of felony convictions. Individual offenders can have multiple convictions. Incarceration includes life without parole and death sentences. Probation includes sentences to community corrections.

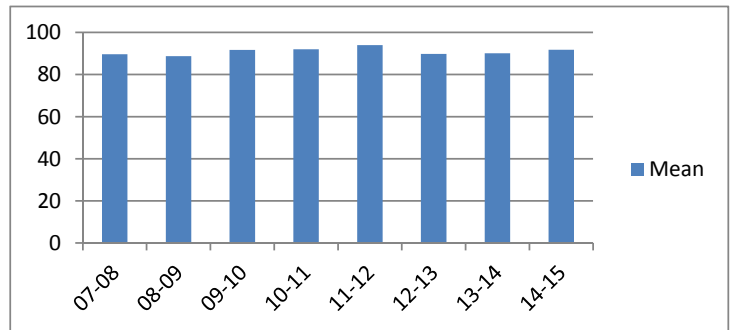
Average Incarceration Length - Class C - Standard Offenders

Fiscal Year	Mean	Median	Standard Deviation	N
07-08	49.56	48.00	15.50	5,789
08-09	49.92	48.00	15.46	5,590
09-10	49.51	48.00	16.08	6,039
10-11	49.73	48.00	15.63	6,264
11-12	50.18	48.00	16.90	5,593
12-13	50.24	48.00	15.92	4,369
13-14	51.45	48.00	16.49	3,701
14-15	49.58	48.00	16.38	1,387



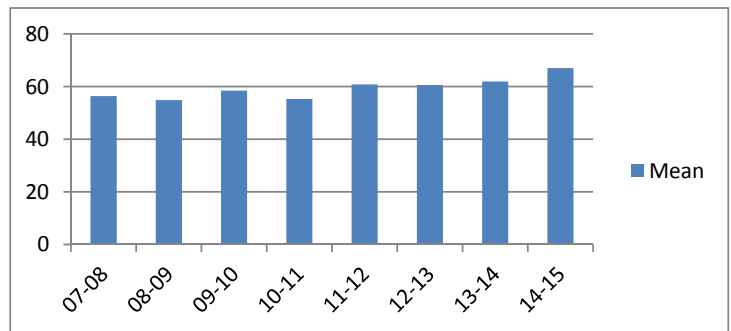
Average Incarceration Length - Class C - Multiple Offenders

Fiscal Year	Mean	Median	Standard Deviation	N
07-08	89.68	96.00	19.93	664
08-09	88.75	84.00	20.66	852
09-10	91.73	96.00	21.23	889
10-11	91.97	96.00	22.29	881
11-12	93.96	96.00	22.06	936
12-13	89.82	84.00	22.05	800
13-14	90.11	84.00	20.30	761
14-15	91.75	84.00	22.93	382



Average Incarceration Length - Aggravated Burglary - All Offenders

Fiscal Year	Mean	Median	Standard Deviation	N
07-08	56.41	48.00	26.45	1,480
08-09	54.89	48.00	24.17	1,592
09-10	58.49	48.00	28.51	2,053
10-11	55.28	48.00	24.71	2,132
11-12	60.82	48.00	31.16	2,136
12-13	60.61	48.00	32.10	1,656
13-14	61.91	48.00	31.19	1,274
14-15	67.06	60.00	33.06	507

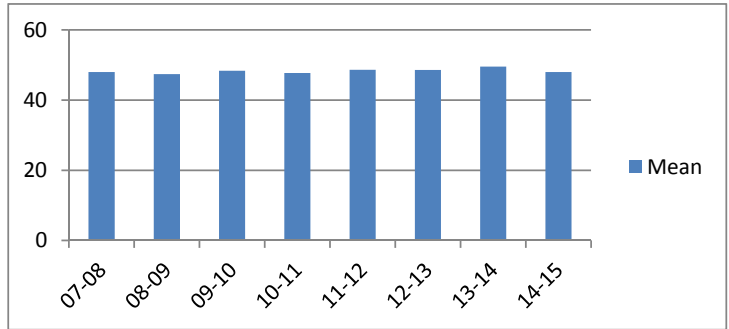


Average Incarceration Lengths in Months by Felony Class and Offense

Note: Column N indicates the number of felony convictions. Individual offenders can have multiple convictions. Incarceration includes life without parole and death sentences. Probation includes sentences to community corrections.

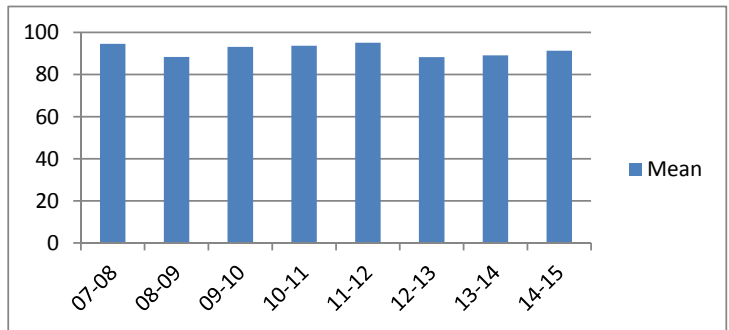
Average Incarceration Length - Aggravated Burglary - Standard Offenders

Fiscal Year	Mean	Median	Standard Deviation	N
07-08	47.97	48.00	13.77	1,248
08-09	47.42	42.00	14.44	1,327
09-10	48.35	48.00	14.34	1,678
10-11	47.71	48.00	13.68	1,811
11-12	48.61	48.00	15.12	1,680
12-13	48.59	48.00	14.31	1,292
13-14	49.55	48.00	14.51	975
14-15	47.98	48.00	13.91	326



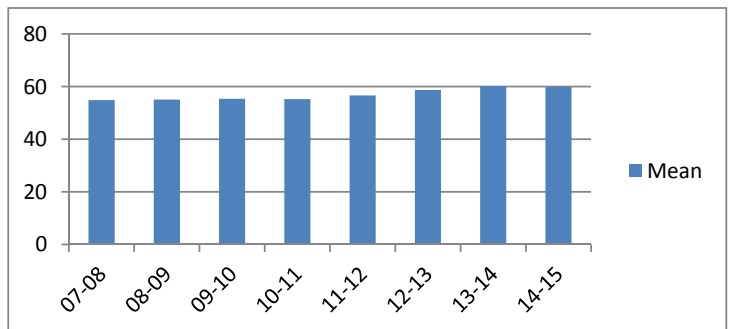
Average Incarceration Length - Aggravated Burglary - Multiple Offenders

Fiscal Year	Mean	Median	Standard Deviation	N
07-08	94.54	96.00	18.40	150
08-09	88.33	84.00	19.28	209
09-10	93.15	96.00	18.50	286
10-11	93.66	96.00	20.24	236
11-12	95.08	96.00	21.60	310
12-13	88.27	84.00	20.87	246
13-14	89.11	84.00	19.85	216
14-15	91.31	84.00	20.71	139



Average Incarceration Length - Aggravated Assault - All Offenders

Fiscal Year	Mean	Median	Standard Deviation	N
07-08	54.89	48.00	23.88	1,067
08-09	55.07	48.00	24.16	1,124
09-10	55.37	48.00	25.46	1,027
10-11	55.24	48.00	25.77	1,020
11-12	56.61	48.00	26.73	1,003
12-13	58.69	48.00	31.82	935
13-14	60.20	48.00	29.96	777
14-15	59.88	48.00	29.69	305

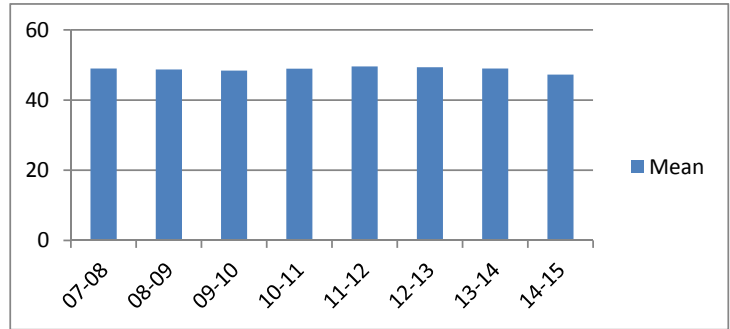


Average Incarceration Lengths in Months by Felony Class and Offense

Note: Column N indicates the number of felony convictions. Individual offenders can have multiple convictions. Incarceration includes life without parole and death sentences. Probation includes sentences to community corrections.

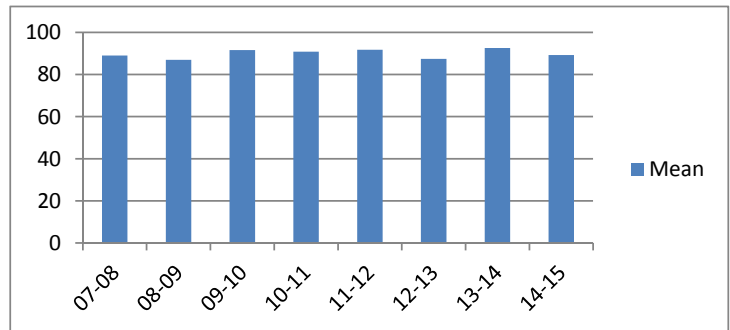
Average Incarceration Length - Aggravated Assault - Standard Offenders

Fiscal Year	Mean	Median	Standard Deviation	N
07-08	49.01	48.00	14.84	932
08-09	48.70	48.00	14.80	945
09-10	48.38	36.03	15.32	880
10-11	48.97	48.00	15.33	890
11-12	49.58	48.00	16.43	862
12-13	49.35	48.00	15.25	767
13-14	49.00	48.00	14.74	609
14-15	47.26	36.00	15.00	226



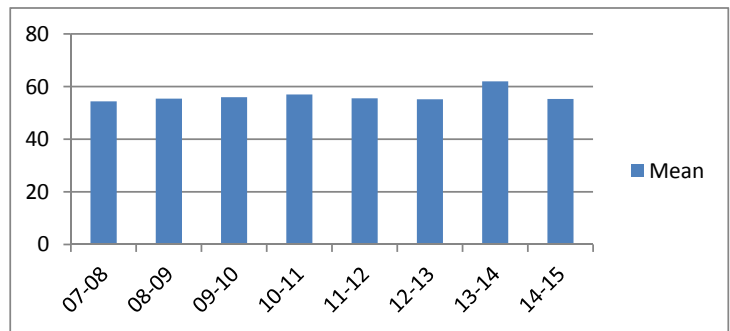
Average Incarceration Length - Aggravated Assault - Multiple Offenders

Fiscal Year	Mean	Median	Standard Deviation	N
07-08	89.06	96.00	19.15	107
08-09	86.93	84.00	22.00	138
09-10	91.59	96.00	21.42	111
10-11	90.83	96.00	20.39	89
11-12	91.77	96.00	22.08	113
12-13	87.42	90.00	21.65	134
13-14	92.58	96.00	26.93	142
14-15	89.24	84.00	20.67	62



Average Incarceration Length - Schedule II Cocaine < 1/2 Gram - All Offenders

Fiscal Year	Mean	Median	Standard Deviation	N
07-08	54.35	48.00	22.24	1,577
08-09	55.39	48.00	20.94	1,228
09-10	55.95	48.00	25.63	1,219
10-11	56.98	48.00	25.92	1,184
11-12	55.56	48.00	25.16	725
12-13	55.14	48.00	21.46	286
13-14	61.96	72.00	22.44	264
14-15	55.28	48.00	25.20	108

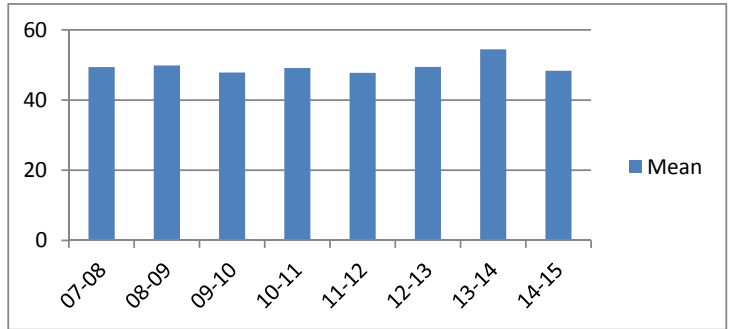


Average Incarceration Lengths in Months by Felony Class and Offense

Note: Column N indicates the number of felony convictions. Individual offenders can have multiple convictions. Incarceration includes life without parole and death sentences. Probation includes sentences to community corrections.

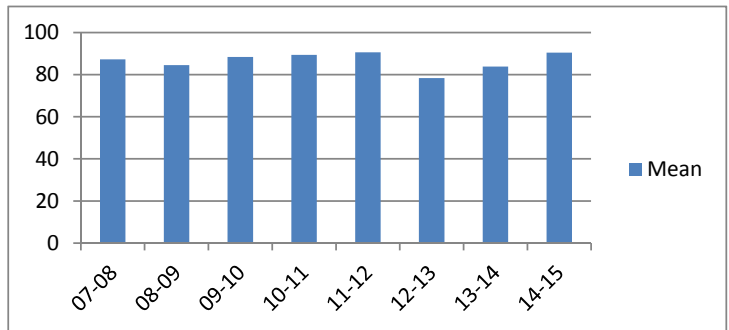
Average Incarceration Length - Schedule II Cocaine < 1/2 Gram - Standard Offenders

Fiscal Year	Mean	Median	Standard Deviation	N
07-08	49.41	48.00	14.99	1,359
08-09	49.85	48.00	14.41	1,036
09-10	47.86	48.00	14.11	997
10-11	49.12	48.00	14.69	985
11-12	47.77	48.00	14.71	580
12-13	49.43	48.00	13.83	237
13-14	54.46	48.00	18.03	197
14-15	48.33	48.00	13.78	91



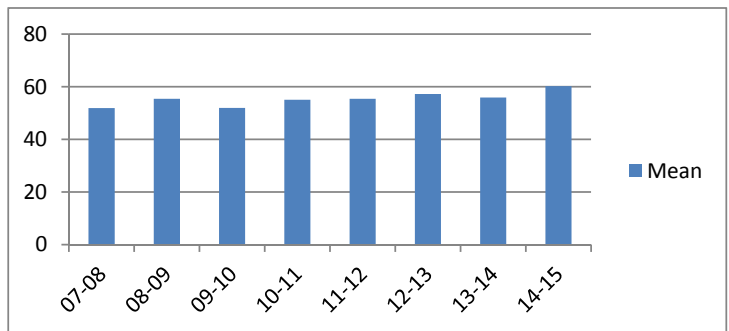
Average Incarceration Length - Schedule II Cocaine < 1/2 Gram - Multiple Offenders

Fiscal Year	Mean	Median	Standard Deviation	N
07-08	87.26	96.00	19.27	163
08-09	84.53	84.00	17.67	164
09-10	88.42	84.00	20.98	178
10-11	89.38	74.00	26.74	162
11-12	90.60	84.00	24.31	113
12-13	78.36	72.00	19.32	42
13-14	83.81	72.00	18.82	64
14-15	90.46	72.00	22.78	13



Average Incarceration Length - Schedule II Drugs: Max \$100,000 Fine - All Offenders

Fiscal Year	Mean	Median	Standard Deviation	N
07-08	51.85	48.00	19.58	531
08-09	55.41	48.00	22.28	519
09-10	51.91	48.00	22.17	559
10-11	55.05	48.00	24.30	712
11-12	55.42	48.00	23.84	789
12-13	57.21	48.00	27.04	629
13-14	55.91	48.00	25.01	596
14-15	60.22	36.03	44.53	201

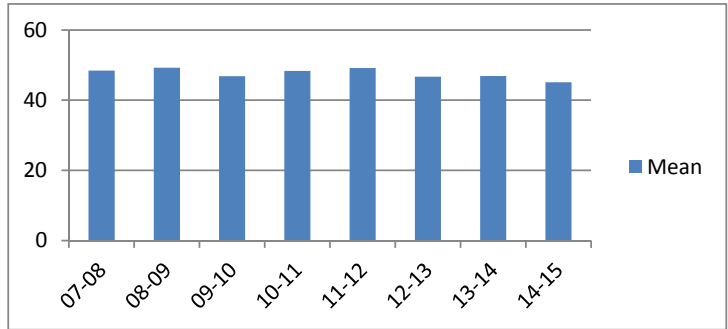


Average Incarceration Lengths in Months by Felony Class and Offense

Note: Column N indicates the number of felony convictions. Individual offenders can have multiple convictions. Incarceration includes life without parole and death sentences. Probation includes sentences to community corrections.

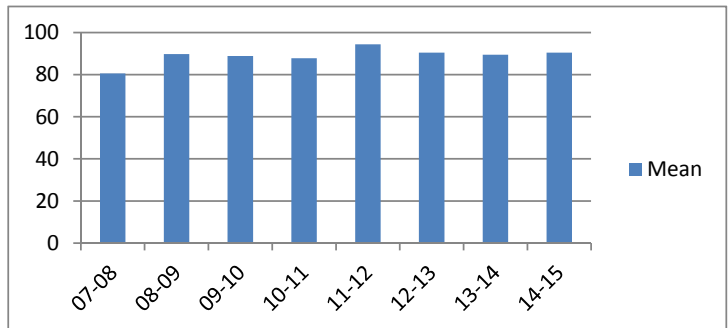
Average Incarceration Length - Schedule II Drugs: Max \$100,000 Fine - Standard Offenders

Fiscal Year	Mean	Median	Standard Deviation	N
07-08	48.45	48.00	15.06	482
08-09	49.26	48.00	14.49	439
09-10	46.83	36.00	14.23	493
10-11	48.36	48.00	14.68	604
11-12	49.16	48.00	16.26	690
12-13	46.70	36.00	14.46	497
13-14	46.87	36.00	14.60	472
14-15	45.09	36.00	15.21	159



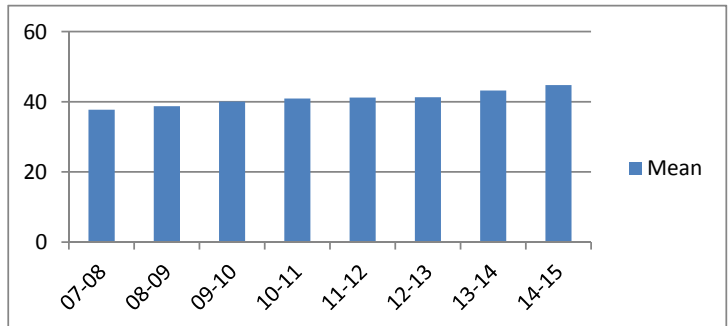
Average Incarceration Length - Schedule II Drugs: Max \$100,000 Fine - Multiple Offenders

Fiscal Year	Mean	Median	Standard Deviation	N
07-08	80.56	72.00	16.34	41
08-09	89.75	84.00	22.46	73
09-10	88.86	96.00	21.15	57
10-11	87.78	72.00	19.75	91
11-12	94.41	96.00	21.00	83
12-13	90.46	96.00	19.83	109
13-14	89.42	84.00	20.88	93
14-15	90.44	96.00	26.35	32



Average Incarceration Length - Class D - All Offenders

Fiscal Year	Mean	Median	Standard Deviation	N
07-08	37.71	36.00	20.49	6,135
08-09	38.72	36.00	21.01	6,286
09-10	40.07	36.00	22.62	7,023
10-11	40.91	36.00	23.45	7,222
11-12	41.18	36.00	24.19	7,185
12-13	41.26	36.00	24.07	5,770
13-14	43.20	36.00	26.04	4,550
14-15	44.76	36.00	27.04	2,000

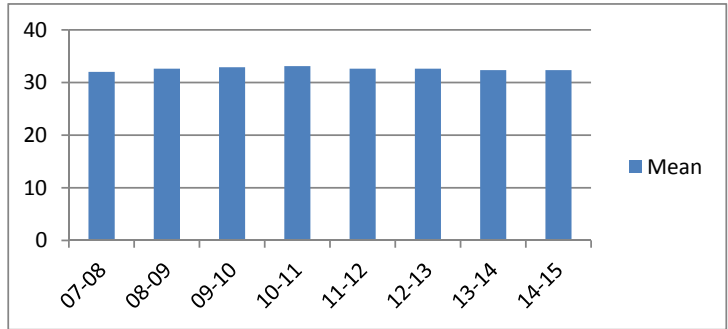


Average Incarceration Lengths in Months by Felony Class and Offense

Note: Column N indicates the number of felony convictions. Individual offenders can have multiple convictions. Incarceration includes life without parole and death sentences. Probation includes sentences to community corrections.

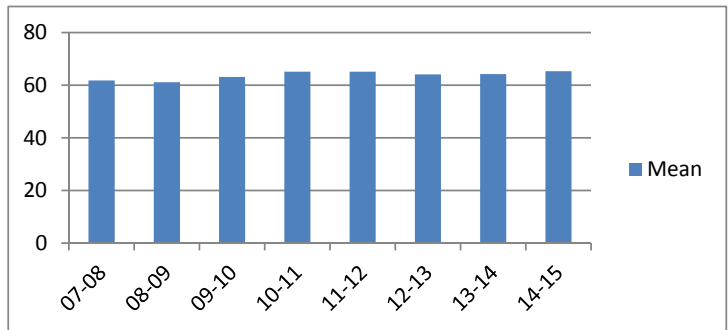
Average Incarceration Length - Class D - Standard Offenders

Fiscal Year	Mean	Median	Standard Deviation	N
07-08	32.01	24.03	10.06	5,252
08-09	32.63	24.03	10.45	5,315
09-10	32.91	25.00	10.50	5,836
10-11	33.11	24.03	11.69	5,900
11-12	32.62	24.03	10.36	5,769
12-13	32.63	24.03	10.17	4,652
13-14	32.36	24.03	10.36	3,425
14-15	32.34	25.00	9.83	1,459



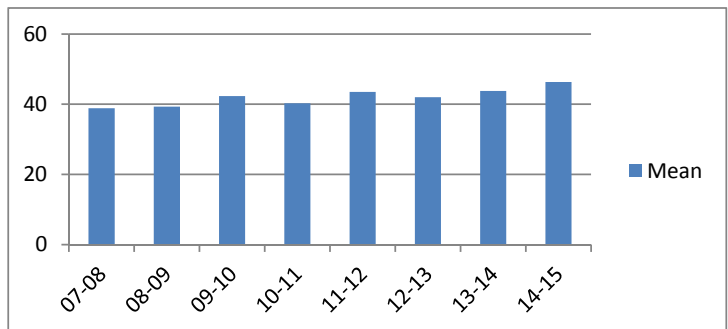
Average Incarceration Length - Class D - Multiple Offenders

Fiscal Year	Mean	Median	Standard Deviation	N
07-08	61.80	60.00	17.76	660
08-09	61.12	57.00	17.83	740
09-10	63.13	60.00	18.36	866
10-11	65.14	60.00	17.66	989
11-12	65.13	60.00	18.79	1,065
12-13	64.10	60.00	18.55	785
13-14	64.22	60.00	17.61	843
14-15	65.34	60.00	19.05	382



Average Incarceration Length - Theft: \$1,000 to \$10,000 - All Offenders

Fiscal Year	Mean	Median	Standard Deviation	N
07-08	38.87	36.00	21.27	1,897
08-09	39.33	36.00	23.01	1,985
09-10	42.34	36.00	25.36	2,088
10-11	40.26	36.00	21.77	2,200
11-12	43.52	36.00	25.65	2,394
12-13	42.02	36.00	24.67	1,991
13-14	43.80	36.00	27.50	1,472
14-15	46.35	36.00	27.96	631

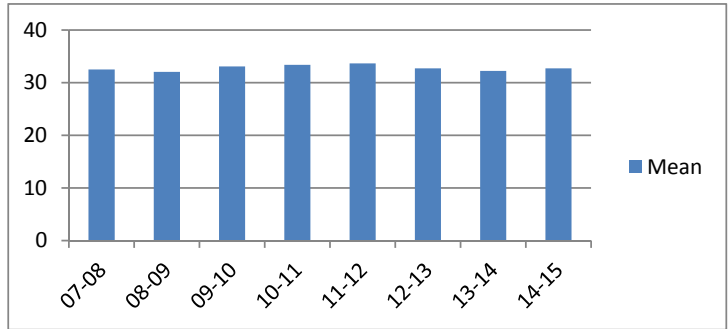


Average Incarceration Lengths in Months by Felony Class and Offense

Note: Column N indicates the number of felony convictions. Individual offenders can have multiple convictions. Incarceration includes life without parole and death sentences. Probation includes sentences to community corrections.

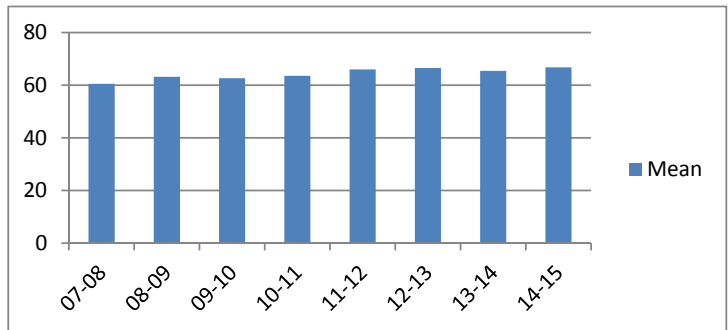
Average Incarceration Length - Theft: \$1,000 to \$10,000 - Standard Offenders

Fiscal Year	Mean	Median	Standard Deviation	N
07-08	32.49	24.03	10.20	1,582
08-09	32.03	24.00	10.05	1,661
09-10	33.09	30.00	10.28	1,666
10-11	33.38	30.00	11.42	1,816
11-12	33.65	36.00	10.50	1,866
12-13	32.72	24.03	10.26	1,573
13-14	32.23	24.03	9.99	1,109
14-15	32.71	25.00	10.08	451



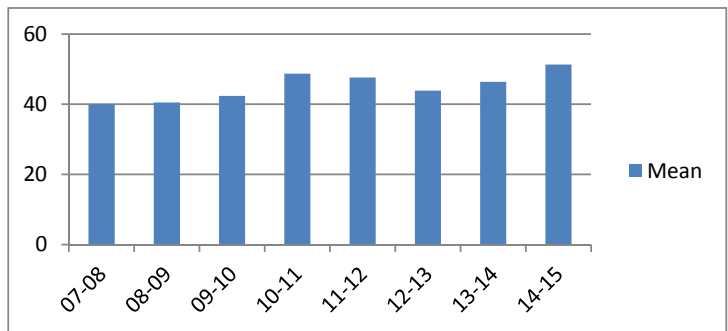
Average Incarceration Length - Theft: \$1,000 to \$10,000 - Multiple Offenders

Fiscal Year	Mean	Median	Standard Deviation	N
07-08	60.52	60.00	16.93	245
08-09	63.19	60.00	19.52	241
09-10	62.61	60.00	17.97	288
10-11	63.52	60.00	16.94	298
11-12	65.97	60.00	19.38	393
12-13	66.53	72.00	20.15	303
13-14	65.43	63.00	19.13	272
14-15	66.78	69.00	17.86	124



Average Incarceration Length - Burglary Other Than Habitation - All Offenders

Fiscal Year	Mean	Median	Standard Deviation	N
07-08	40.01	36.00	24.01	1,103
08-09	40.49	36.00	22.04	1,041
09-10	42.37	36.00	23.19	1,021
10-11	48.72	36.00	28.93	1,212
11-12	47.59	36.00	29.50	1,039
12-13	43.88	36.00	23.36	821
13-14	46.36	36.00	26.38	660
14-15	51.31	48.00	32.34	304

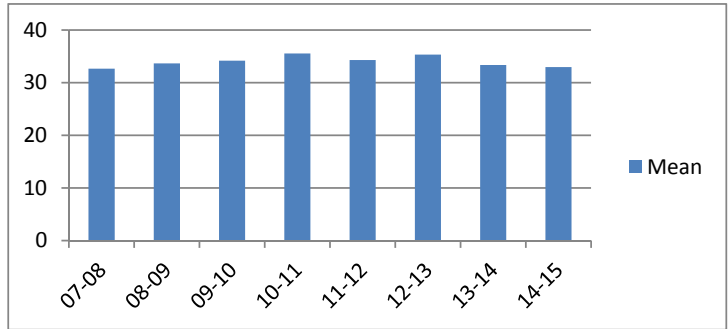


Average Incarceration Lengths in Months by Felony Class and Offense

Note: Column N indicates the number of felony convictions. Individual offenders can have multiple convictions. Incarceration includes life without parole and death sentences. Probation includes sentences to community corrections.

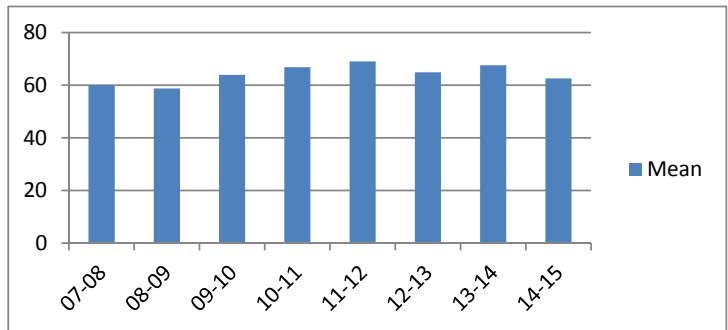
Average Incarceration Length - Burglary Other Than Habitation - Standard Offenders

Fiscal Year	Mean	Median	Standard Deviation	N
07-08	32.64	24.03	10.13	924
08-09	33.64	36.00	10.53	857
09-10	34.16	36.00	10.98	816
10-11	35.55	36.00	15.50	852
11-12	34.29	36.00	10.76	769
12-13	35.34	36.00	10.64	649
13-14	33.35	30.00	10.45	465
14-15	32.95	25.00	10.27	195



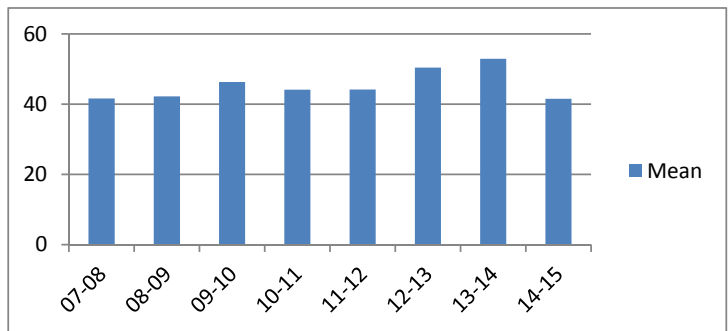
Average Incarceration Length - Burglary Other Than Habitation - Multiple Offenders

Fiscal Year	Mean	Median	Standard Deviation	N
07-08	60.00	48.00	16.33	120
08-09	58.70	48.00	15.87	134
09-10	63.91	60.00	17.16	148
10-11	66.84	72.00	15.19	268
11-12	69.00	72.00	20.41	180
12-13	64.88	60.00	16.97	129
13-14	67.52	72.00	17.28	154
14-15	62.56	60.00	17.02	64



Average Incarceration Length - Identity Theft - All Offenders

Fiscal Year	Mean	Median	Standard Deviation	N
07-08	41.60	36.00	22.89	574
08-09	42.21	36.00	23.21	539
09-10	46.31	48.00	25.88	536
10-11	44.11	36.00	29.50	461
11-12	44.17	36.00	25.56	470
12-13	50.40	36.00	32.34	382
13-14	52.92	48.00	31.61	269
14-15	41.56	36.00	20.30	200

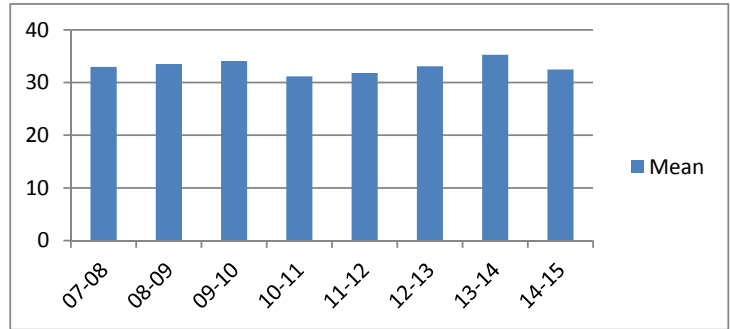


Average Incarceration Lengths in Months by Felony Class and Offense

Note: Column N indicates the number of felony convictions. Individual offenders can have multiple convictions. Incarceration includes life without parole and death sentences. Probation includes sentences to community corrections.

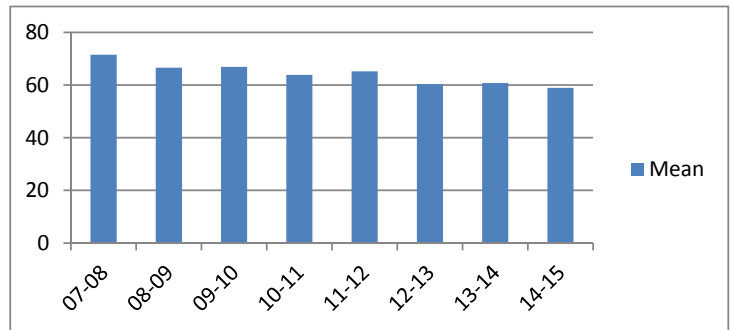
Average Incarceration Length - Identity Theft - Standard Offenders

Fiscal Year	Mean	Median	Standard Deviation	N
07-08	32.98	30.00	9.92	469
08-09	33.51	33.00	10.55	434
09-10	34.09	36.00	10.39	379
10-11	31.19	24.00	10.27	345
11-12	31.82	24.03	9.73	330
12-13	33.08	30.00	10.13	257
13-14	35.28	36.00	10.65	161
14-15	32.49	36.00	7.56	145



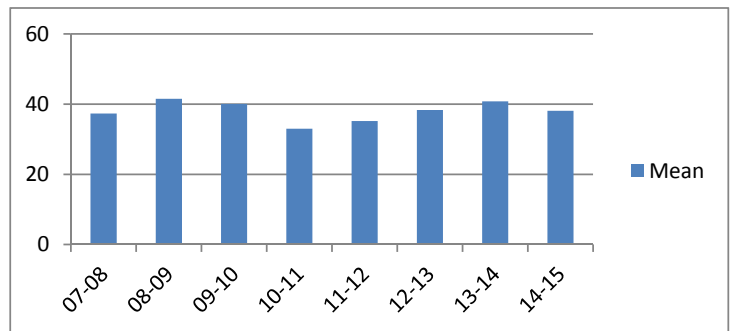
Average Incarceration Length - Identity Theft - Multiple Offenders

Fiscal Year	Mean	Median	Standard Deviation	N
07-08	71.56	72.00	19.94	81
08-09	66.60	60.00	18.00	80
09-10	66.90	72.00	19.80	127
10-11	63.91	60.00	21.01	77
11-12	65.24	66.00	15.96	119
12-13	60.34	60.00	14.80	71
13-14	60.78	48.00	15.94	77
14-15	58.93	48.00	19.79	45



Average Incarceration Length - Obtain Drugs by Fraud - All Offenders

Fiscal Year	Mean	Median	Standard Deviation	N
07-08	37.35	36.00	14.32	240
08-09	41.52	48.00	13.82	283
09-10	40.06	36.00	17.63	259
10-11	33.02	24.03	13.09	145
11-12	35.21	30.00	15.11	265
12-13	38.36	24.03	25.70	130
13-14	40.79	36.00	19.58	79
14-15	38.10	36.00	18.85	63

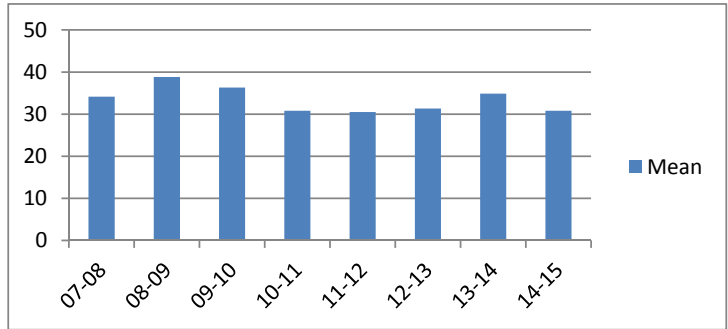


Average Incarceration Lengths in Months by Felony Class and Offense

Note: Column N indicates the number of felony convictions. Individual offenders can have multiple convictions. Incarceration includes life without parole and death sentences. Probation includes sentences to community corrections.

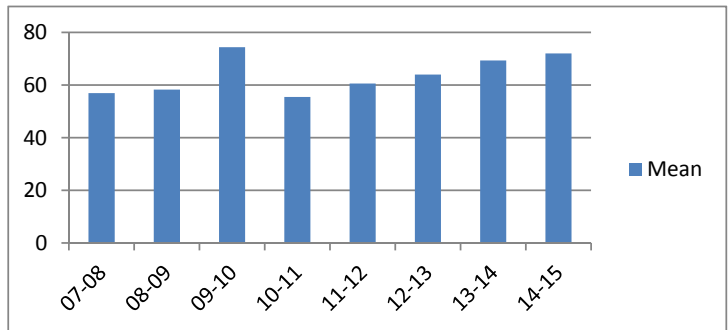
Average Incarceration Length - Obtain Drugs by Fraud - Standard Offenders

Fiscal Year	Mean	Median	Standard Deviation	N
07-08	34.14	36.00	10.07	209
08-09	38.82	48.00	11.33	249
09-10	36.32	36.00	9.62	242
10-11	30.80	24.00	9.14	134
11-12	30.49	24.00	8.58	223
12-13	31.34	24.00	9.70	117
13-14	34.85	36.00	10.33	68
14-15	30.80	24.03	7.98	53



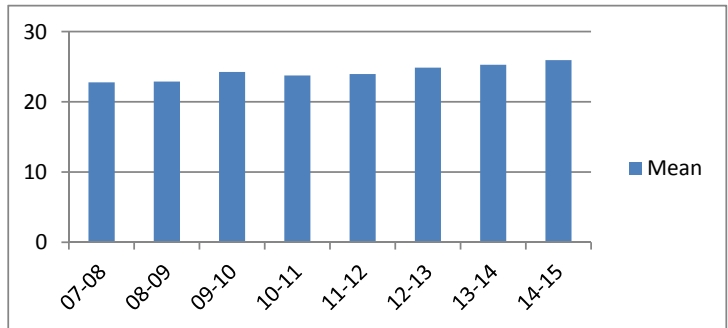
Average Incarceration Length - Obtain Drugs by Fraud - Multiple Offenders

Fiscal Year	Mean	Median	Standard Deviation	N
07-08	56.97	48.00	15.91	30
08-09	58.26	60.00	10.18	31
09-10	74.40	72.00	21.47	5
10-11	55.50	48.00	10.99	8
11-12	60.59	48.00	17.59	41
12-13	64.00	72.00	12.39	6
13-14	69.33	72.00	14.42	9
14-15	72.00	72.00	0.00	8



Average Incarceration Length - Class E - All Offenders

Fiscal Year	Mean	Median	Standard Deviation	N
07-08	22.77	24.00	12.03	9,416
08-09	22.88	24.00	12.06	9,188
09-10	24.26	24.00	13.58	8,522
10-11	23.76	24.00	13.24	8,708
11-12	23.95	24.00	13.26	7,860
12-13	24.87	24.00	14.57	6,848
13-14	25.28	24.00	15.78	5,529
14-15	25.95	24.00	15.26	2,163

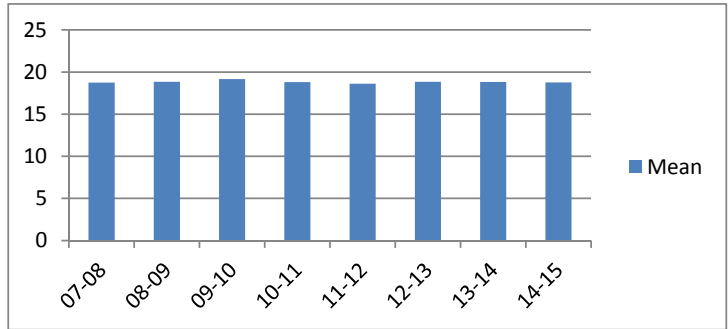


Average Incarceration Lengths in Months by Felony Class and Offense

Note: Column N indicates the number of felony convictions. Individual offenders can have multiple convictions. Incarceration includes life without parole and death sentences. Probation includes sentences to community corrections.

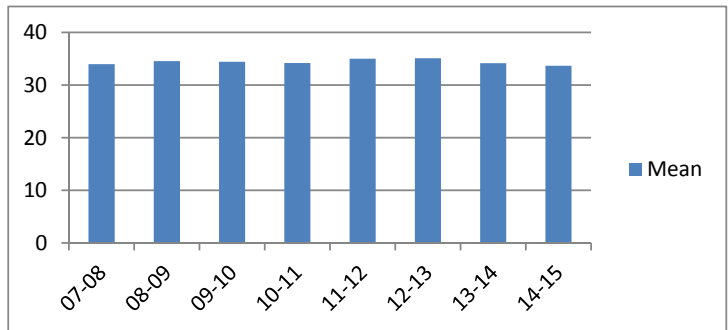
Average Incarceration Length - Class E - Standard Offenders

Fiscal Year	Mean	Median	Standard Deviation	N
07-08	18.75	24.00	6.37	7,539
08-09	18.84	24.00	6.13	7,420
09-10	19.16	24.00	6.43	6,587
10-11	18.81	24.00	6.43	6,697
11-12	18.62	24.00	6.22	5,920
12-13	18.85	24.00	6.47	5,093
13-14	18.83	24.00	7.02	3,983
14-15	18.76	24.00	6.69	1,480



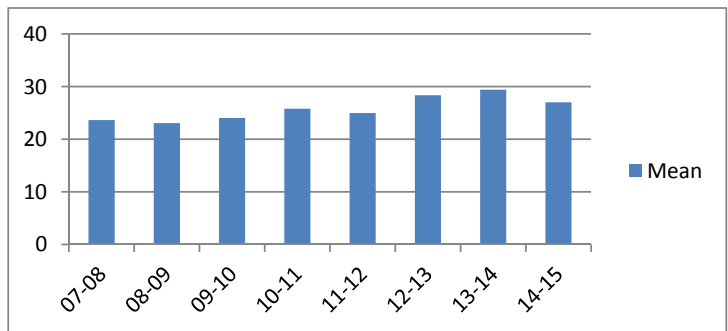
Average Incarceration Length - Class E - Multiple Offenders

Fiscal Year	Mean	Median	Standard Deviation	N
07-08	33.98	36.00	10.62	1,457
08-09	34.54	36.00	10.20	1,372
09-10	34.42	36.00	10.55	1,395
10-11	34.19	36.00	10.43	1,512
11-12	35.01	36.00	10.59	1,506
12-13	35.11	36.00	10.79	1,216
13-14	34.15	36.00	10.55	1,138
14-15	33.69	36.00	10.53	480



Average Incarceration Length - Forgery: Up to \$1,000 - All Offenders

Fiscal Year	Mean	Median	Standard Deviation	N
07-08	23.64	24.00	11.95	2,763
08-09	23.08	24.00	11.60	2,518
09-10	24.04	24.00	12.50	1,768
10-11	25.81	24.00	14.86	1,494
11-12	24.97	24.00	14.47	1,167
12-13	28.36	24.00	18.06	1,193
13-14	29.41	24.00	24.19	669
14-15	27.02	24.00	15.03	196

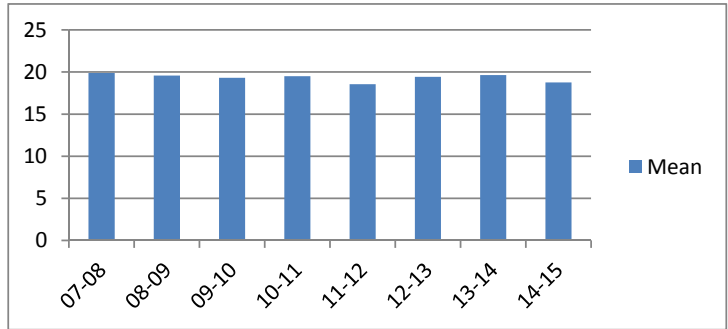


Average Incarceration Lengths in Months by Felony Class and Offense

Note: Column N indicates the number of felony convictions. Individual offenders can have multiple convictions. Incarceration includes life without parole and death sentences. Probation includes sentences to community corrections.

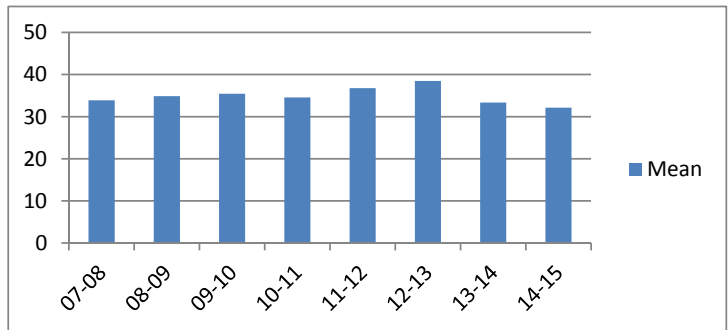
Average Incarceration Length - Forgery: Up to \$1,000 - Standard Offenders

Fiscal Year	Mean	Median	Standard Deviation	N
07-08	19.89	24.00	6.30	2,250
08-09	19.57	24.00	5.46	2,127
09-10	19.32	24.00	6.12	1,389
10-11	19.50	24.00	6.59	1,108
11-12	18.55	24.00	6.10	867
12-13	19.43	24.00	6.21	868
13-14	19.64	24.00	8.11	467
14-15	18.77	24.00	6.13	117



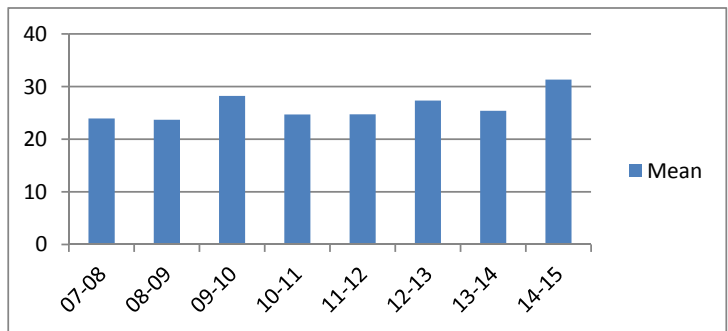
Average Incarceration Length - Forgery: Up to \$1,000 - Multiple Offenders

Fiscal Year	Mean	Median	Standard Deviation	N
07-08	33.89	30.00	10.87	390
08-09	34.87	36.00	10.05	298
09-10	35.44	36.00	10.79	277
10-11	34.56	36.00	10.83	252
11-12	36.78	36.00	10.28	224
12-13	38.48	42.00	9.89	143
13-14	33.34	36.00	9.78	122
14-15	32.14	24.00	10.34	58



Average Incarceration Length - Burglary: Auto - All Offenders

Fiscal Year	Mean	Median	Standard Deviation	N
07-08	23.94	24.00	11.45	1,136
08-09	23.71	24.00	12.30	1,089
09-10	28.23	24.00	17.17	1,279
10-11	24.71	24.00	13.70	1,561
11-12	24.73	24.00	12.38	1,304
12-13	27.35	24.00	15.07	796
13-14	25.39	24.00	14.57	754
14-15	31.32	24.00	17.97	353

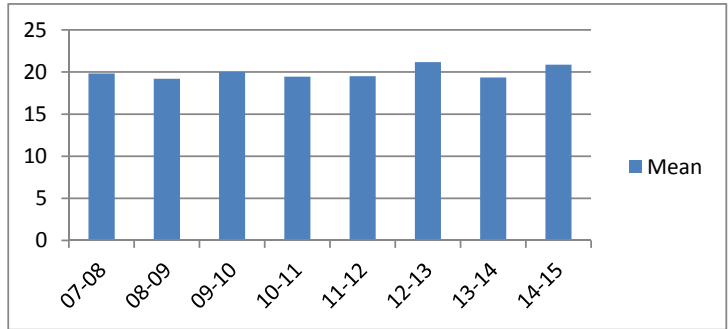


Average Incarceration Lengths in Months by Felony Class and Offense

Note: Column N indicates the number of felony convictions. Individual offenders can have multiple convictions. Incarceration includes life without parole and death sentences. Probation includes sentences to community corrections.

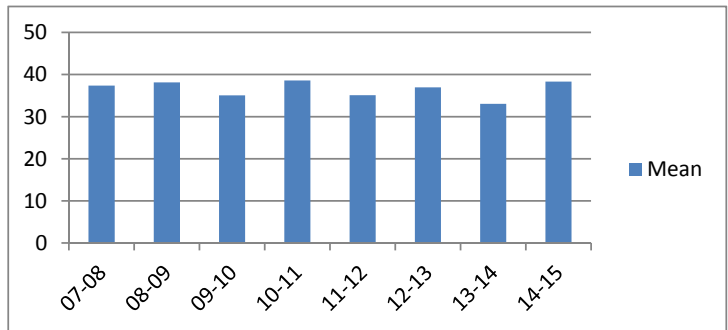
Average Incarceration Length - Burglary: Auto - Standard Offenders

Fiscal Year	Mean	Median	Standard Deviation	N
07-08	19.82	24.00	5.86	909
08-09	19.20	24.00	6.15	879
09-10	19.99	24.00	5.87	912
10-11	19.45	24.00	6.47	1,236
11-12	19.50	24.00	5.79	962
12-13	21.18	24.00	7.44	588
13-14	19.36	24.00	6.30	556
14-15	20.86	24.00	6.41	229



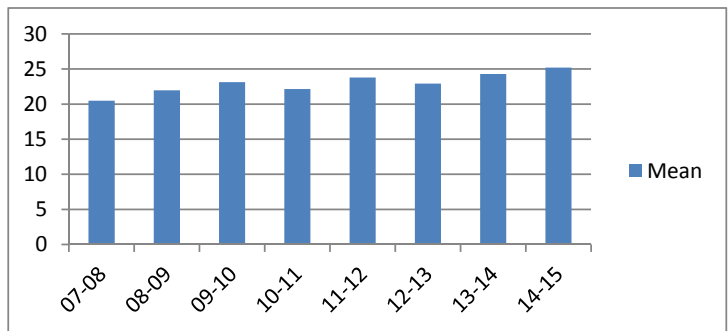
Average Incarceration Length - Burglary: Auto - Multiple Offenders

Fiscal Year	Mean	Median	Standard Deviation	N
07-08	37.37	36.00	10.54	191
08-09	38.14	36.00	10.43	159
09-10	35.04	36.00	10.57	207
10-11	38.58	36.00	10.42	238
11-12	35.08	36.00	10.82	273
12-13	36.95	36.00	11.97	151
13-14	33.02	36.00	9.38	136
14-15	38.32	36.00	9.68	63



Average Incarceration Length - Theft: \$500 - \$1,000 - All Offenders

Fiscal Year	Mean	Median	Standard Deviation	N
07-08	20.48	18.00	11.51	948
08-09	21.97	24.00	12.91	949
09-10	23.14	24.00	12.62	1,027
10-11	22.16	24.00	12.39	1,064
11-12	23.79	24.00	14.10	1,070
12-13	22.91	24.00	13.97	925
13-14	24.29	24.00	14.14	767
14-15	25.19	24.00	16.34	316

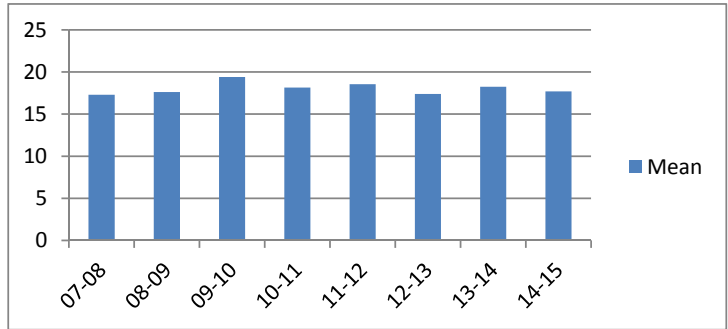


Average Incarceration Lengths in Months by Felony Class and Offense

Note: Column N indicates the number of felony convictions. Individual offenders can have multiple convictions. Incarceration includes life without parole and death sentences. Probation includes sentences to community corrections.

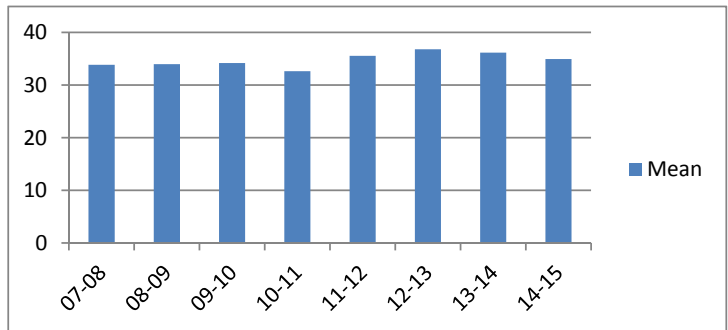
Average Incarceration Length - Theft: \$500 - \$1,000 - Standard Offenders

Fiscal Year	Mean	Median	Standard Deviation	N
07-08	17.29	12.00	5.96	809
08-09	17.63	12.00	6.35	771
09-10	19.40	24.00	6.94	848
10-11	18.16	18.00	6.13	861
11-12	18.55	24.00	6.28	846
12-13	17.39	12.00	6.17	728
13-14	18.25	18.00	6.20	574
14-15	17.70	14.02	5.94	230



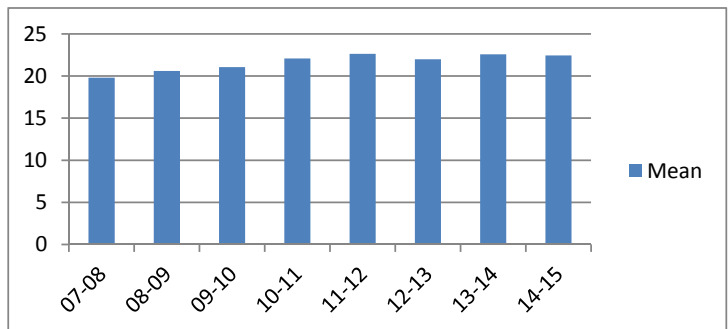
Average Incarceration Length - Theft: \$500 - \$1,000 - Multiple Offenders

Fiscal Year	Mean	Median	Standard Deviation	N
07-08	33.83	27.00	11.49	102
08-09	33.95	36.00	10.46	129
09-10	34.17	36.00	11.33	131
10-11	32.63	24.03	10.04	160
11-12	35.55	36.00	10.70	157
12-13	36.79	36.00	11.71	139
13-14	36.16	36.00	10.18	146
14-15	34.95	36.00	11.43	56



Average Incarceration Length - Schedule VI Drugs: Not < 1/2 Ounce - All Offenders

Fiscal Year	Mean	Median	Standard Deviation	N
07-08	19.80	18.00	9.98	651
08-09	20.60	24.00	9.67	597
09-10	21.05	24.00	10.21	658
10-11	22.09	24.00	11.16	684
11-12	22.63	24.00	11.73	664
12-13	21.99	24.00	10.33	562
13-14	22.58	24.00	11.77	485
14-15	22.43	24.00	9.93	161

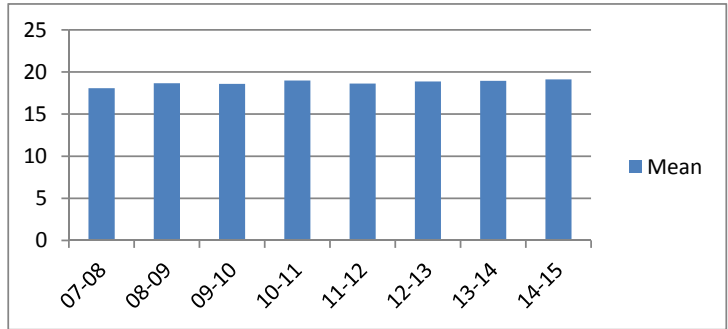


Average Incarceration Lengths in Months by Felony Class and Offense

Note: Column N indicates the number of felony convictions. Individual offenders can have multiple convictions. Incarceration includes life without parole and death sentences. Probation includes sentences to community corrections.

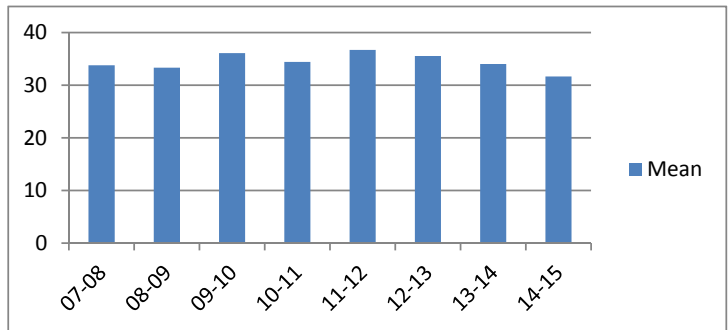
Average Incarceration Length - Schedule VI Drugs: Not < 1/2 Ounce - Standard Offenders

Fiscal Year	Mean	Median	Standard Deviation	N
07-08	18.07	15.00	7.62	585
08-09	18.66	18.00	6.49	531
09-10	18.59	18.00	6.67	572
10-11	18.98	24.00	6.22	577
11-12	18.62	24.00	6.11	538
12-13	18.87	24.00	5.93	464
13-14	18.95	24.00	6.94	394
14-15	19.12	24.00	6.10	123



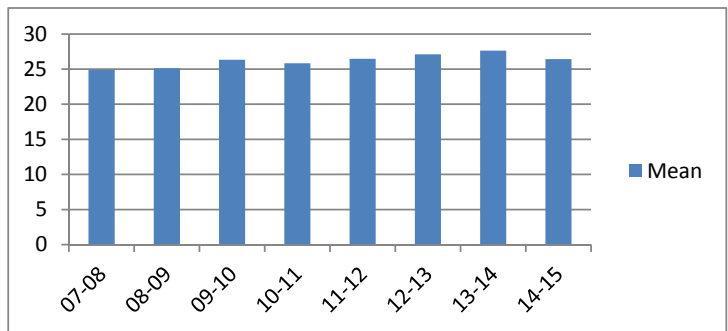
Average Incarceration Length - Schedule VI Drugs: Not < 1/2 Ounce - Multiple Offenders

Fiscal Year	Mean	Median	Standard Deviation	N
07-08	33.79	36.00	11.30	57
08-09	33.33	30.00	10.23	58
09-10	36.08	36.00	11.53	76
10-11	34.43	36.00	9.94	88
11-12	36.71	36.00	10.66	106
12-13	35.56	36.00	9.44	79
13-14	34.03	36.00	10.29	76
14-15	31.67	30.00	10.30	36



Average Incarceration Length - Habitual Traffic Offender - All Offenders

Fiscal Year	Mean	Median	Standard Deviation	N
07-08	24.90	24.00	13.93	564
08-09	25.12	24.00	13.41	546
09-10	26.35	24.00	15.03	440
10-11	25.83	24.00	13.82	464
11-12	26.47	24.00	14.84	402
12-13	27.11	24.00	15.35	388
13-14	27.63	24.00	15.53	329
14-15	26.44	24.00	13.78	121

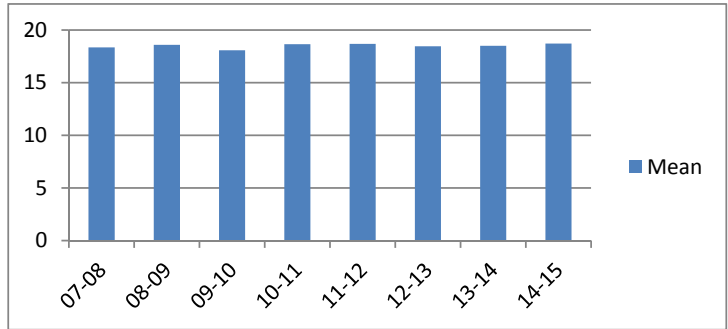


Average Incarceration Lengths in Months by Felony Class and Offense

Note: Column N indicates the number of felony convictions. Individual offenders can have multiple convictions. Incarceration includes life without parole and death sentences. Probation includes sentences to community corrections.

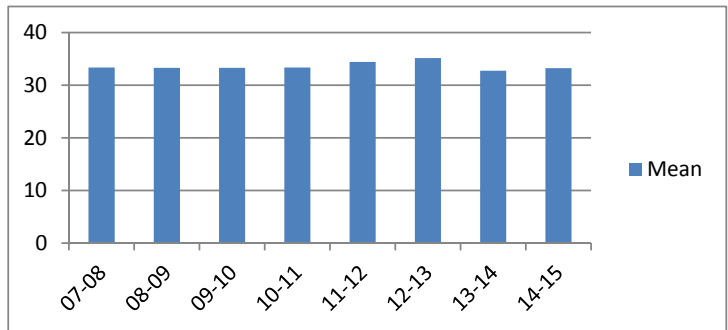
Average Incarceration Length - Habitual Traffic Offender - Standard Offenders

Fiscal Year	Mean	Median	Standard Deviation	N
07-08	18.34	18.00	5.72	391
08-09	18.59	18.00	5.80	366
09-10	18.07	18.00	5.78	272
10-11	18.65	18.00	6.01	293
11-12	18.69	18.00	5.79	256
12-13	18.45	18.00	6.03	243
13-14	18.50	18.00	6.42	189
14-15	18.71	24.00	5.83	73



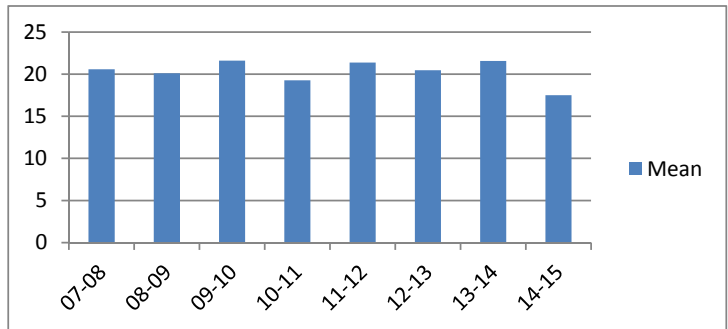
Average Incarceration Length - Habitual Traffic Offender - Multiple Offenders

Fiscal Year	Mean	Median	Standard Deviation	N
07-08	33.35	36.00	9.64	128
08-09	33.28	36.00	9.08	146
09-10	33.28	36.00	9.63	131
10-11	33.34	36.00	9.14	140
11-12	34.43	36.00	9.83	113
12-13	35.14	36.00	10.06	110
13-14	32.76	36.00	9.49	98
14-15	33.22	27.00	10.67	36



Average Incarceration Length - Failure to Appear (Felony) - All Offenders

Fiscal Year	Mean	Median	Standard Deviation	N
07-08	20.58	12.00	12.62	374
08-09	20.10	12.00	13.15	370
09-10	21.60	18.00	13.93	313
10-11	19.26	12.00	10.65	354
11-12	21.37	18.00	12.68	326
12-13	20.46	18.00	12.13	342
13-14	21.56	12.20	13.65	283
14-15	17.50	12.00	6.74	109

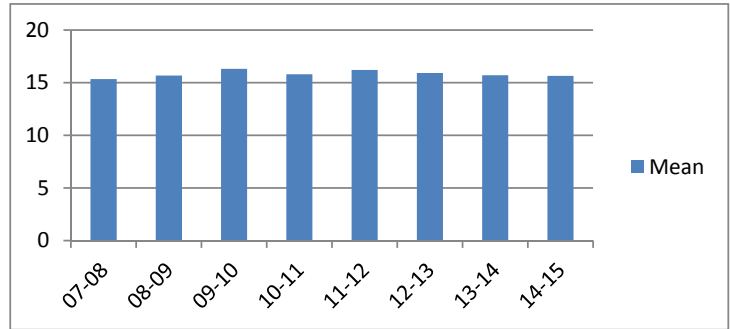


Average Incarceration Lengths in Months by Felony Class and Offense

Note: Column N indicates the number of felony convictions. Individual offenders can have multiple convictions. Incarceration includes life without parole and death sentences. Probation includes sentences to community corrections.

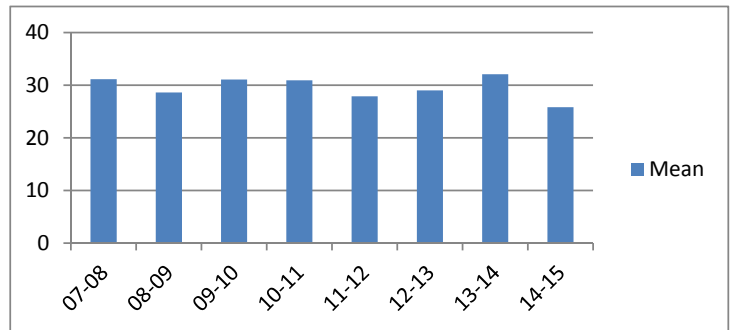
**Average Incarceration Length - Failure to Appear
(Felony) - Standard Offenders**

Fiscal Year	Mean	Median	Standard Deviation	N
07-08	15.34	12.00	5.19	283
08-09	15.67	12.00	5.38	301
09-10	16.32	12.00	5.68	243
10-11	15.80	12.00	5.48	288
11-12	16.20	12.00	5.60	237
12-13	15.91	12.00	5.36	260
13-14	15.70	12.00	5.71	210
14-15	15.64	12.00	5.40	89



**Average Incarceration Length - Failure to Appear
(Felony) - Multiple Offenders**

Fiscal Year	Mean	Median	Standard Deviation	N
07-08	31.12	24.00	10.43	70
08-09	28.60	24.00	8.78	47
09-10	31.06	24.00	10.51	51
10-11	30.92	24.00	10.02	59
11-12	27.88	24.00	7.38	66
12-13	29.00	24.00	8.57	61
13-14	32.05	24.00	10.68	56
14-15	25.80	24.00	5.87	20



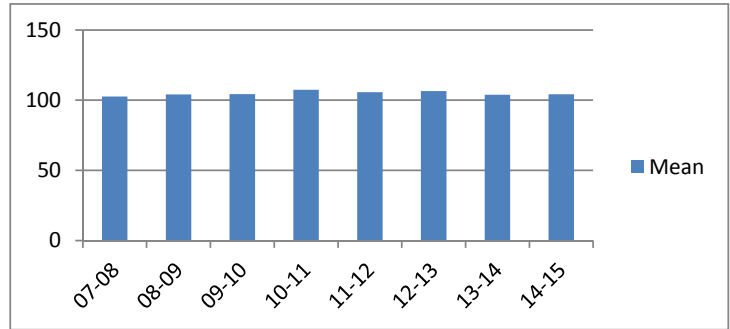
Average Probation Lengths in Months by Felony Class

Note: Column N indicates the number of felony convictions. Individual offenders can have multiple convictions. Incarceration includes life without parole and death sentences. Probation includes sentences to community corrections.

Average Probation Length - Felony Class B - All Offenders

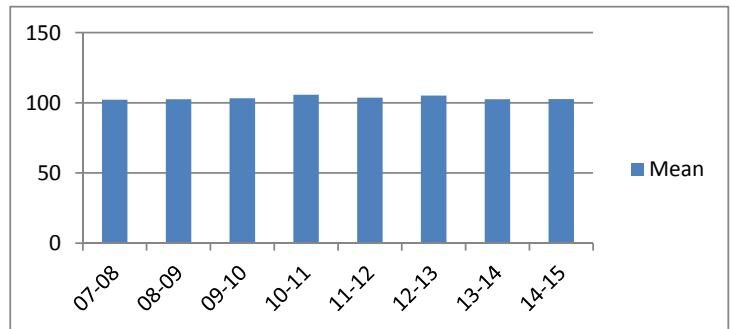
Fiscal Year	Mean	Median	Standard Deviation	N
07-08	102.60	96.00	19.02	608
08-09	104.03	96.00	21.70	581
09-10	104.26	96.00	20.67	606
10-11	107.38	96.00	22.15	710
11-12	105.72	96.00	22.00	643
12-13	106.52	96.00	22.22	766
13-14	103.80	96.00	19.28	659
14-15	104.14	96.00	19.50	435

The table for multiple offenders was not included due to low occurrence frequencies.



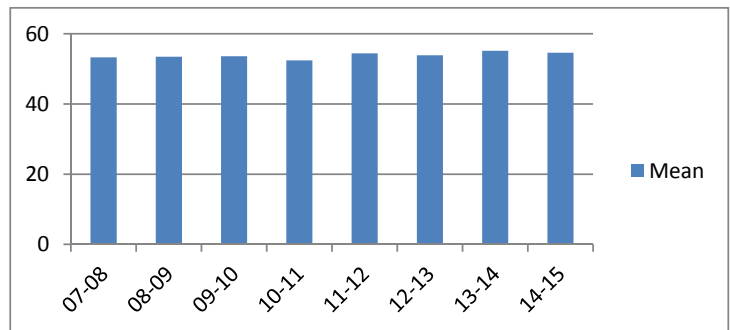
Average Probation Length - Felony Class B - Standard Offenders

Fiscal Year	Mean	Median	Standard Deviation	N
07-08	102.20	96.00	18.50	596
08-09	102.53	96.00	20.11	554
09-10	103.19	96.00	18.97	592
10-11	105.69	96.00	20.19	671
11-12	103.72	96.00	18.56	598
12-13	105.11	96.00	19.72	730
13-14	102.57	96.00	16.75	637
14-15	102.60	96.00	17.47	416



Average Probation Length - Class C - All Offenders

Fiscal Year	Mean	Median	Standard Deviation	N
07-08	53.28	48.00	27.64	2,285
08-09	53.47	48.00	23.47	2,141
09-10	53.60	48.00	22.71	2,157
10-11	52.43	48.00	20.07	2,602
11-12	54.45	48.00	20.87	2,849
12-13	53.89	48.00	21.14	3,174
13-14	55.16	48.00	22.66	3,251
14-15	54.62	48.00	22.18	1,527

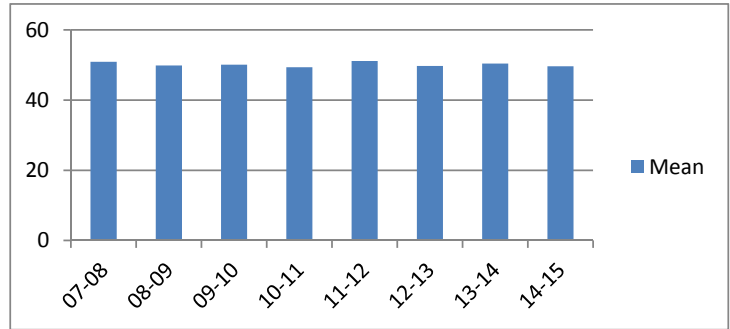


Average Probation Lengths in Months by Felony Class

Note: Column N indicates the number of felony convictions. Individual offenders can have multiple convictions. Incarceration includes life without parole and death sentences. Probation includes sentences to community corrections.

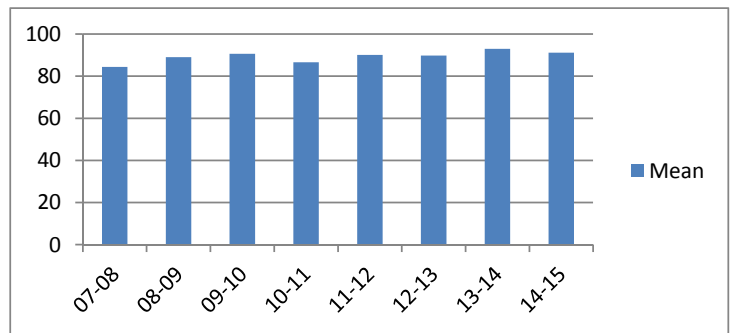
Average Probation Length - Class C - Standard Offenders

Fiscal Year	Mean	Median	Standard Deviation	N
07-08	50.89	48.00	25.97	2,135
08-09	49.84	48.00	19.65	1,954
09-10	50.07	48.00	18.56	1,976
10-11	49.34	48.00	16.56	2,394
11-12	51.14	48.00	16.82	2,616
12-13	49.75	48.00	16.12	2,852
13-14	50.40	48.00	16.87	2,917
14-15	49.61	48.00	16.79	1,348



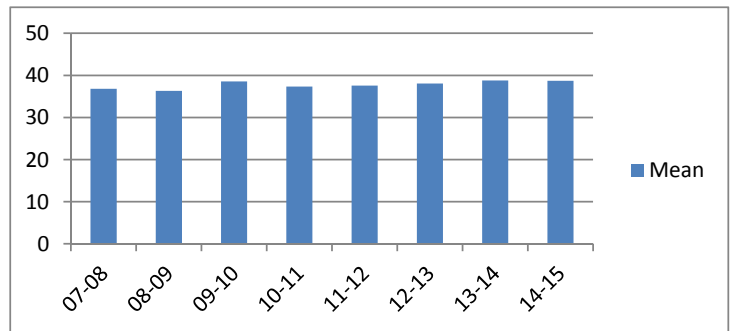
Average Probation Length - Class C - Multiple Offenders

Fiscal Year	Mean	Median	Standard Deviation	N
07-08	84.43	84.00	19.71	124
08-09	89.03	84.00	23.95	162
09-10	90.66	84.00	25.39	161
10-11	86.58	84.00	21.45	194
11-12	90.11	96.00	22.44	211
12-13	89.77	89.92	21.47	291
13-14	92.99	96.00	21.00	288
14-15	91.14	96.00	20.90	161



Average Probation Length - Class D - All Offenders

Fiscal Year	Mean	Median	Standard Deviation	N
07-08	36.82	36.00	20.99	3,013
08-09	36.30	36.00	17.46	3,122
09-10	38.55	36.00	21.06	3,464
10-11	37.34	36.00	17.16	3,673
11-12	37.57	36.00	16.92	4,083
12-13	38.06	36.00	18.49	4,518
13-14	38.78	36.00	19.14	4,675
14-15	38.69	36.00	18.58	2,305

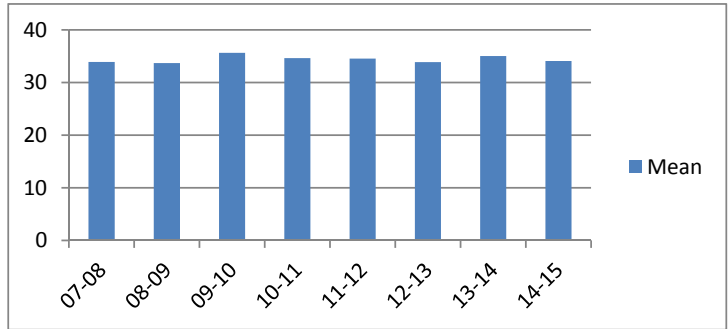


Average Probation Lengths in Months by Felony Class

Note: Column N indicates the number of felony convictions. Individual offenders can have multiple convictions. Incarceration includes life without parole and death sentences. Probation includes sentences to community corrections.

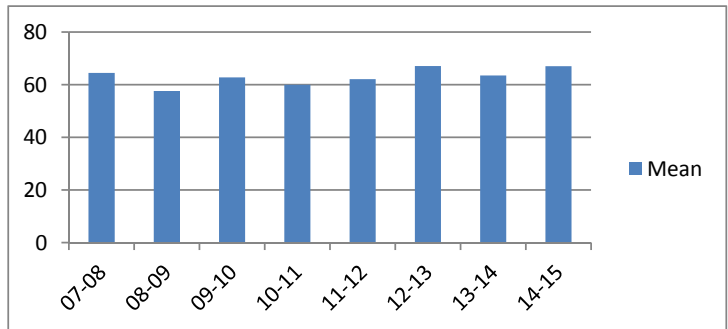
Average Probation Length - Class D - Standard Offenders

Fiscal Year	Mean	Median	Standard Deviation	N
07-08	33.92	24.03	14.70	2,827
08-09	33.69	25.00	13.57	2,881
09-10	35.63	36.00	16.96	3,210
10-11	34.66	36.00	13.68	3,360
11-12	34.54	36.00	12.13	3,722
12-13	33.87	36.00	12.23	4,030
13-14	35.02	36.00	14.12	4,180
14-15	34.11	36.00	11.55	2,028



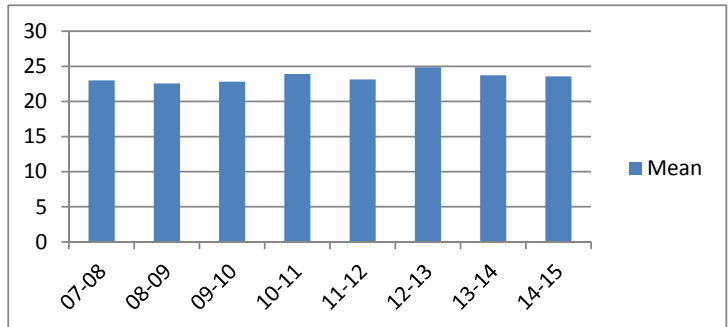
Average Probation Length - Class D - Multiple Offenders

Fiscal Year	Mean	Median	Standard Deviation	N
07-08	64.48	66.00	22.59	134
08-09	57.59	48.00	19.22	182
09-10	62.81	60.00	19.73	187
10-11	60.02	60.00	16.98	265
11-12	62.11	60.00	19.96	294
12-13	67.07	60.00	19.61	418
13-14	63.53	60.00	18.10	409
14-15	67.02	72.00	21.05	236



Average Probation Length - Class E - All Offenders

Fiscal Year	Mean	Median	Standard Deviation	N
07-08	22.99	24.00	13.77	4,235
08-09	22.58	24.00	12.90	4,038
09-10	22.83	24.00	12.00	4,199
10-11	23.92	24.00	15.07	4,086
11-12	23.13	24.00	12.41	4,095
12-13	24.88	24.00	14.45	4,738
13-14	23.73	24.00	12.27	5,020
14-15	23.57	24.00	11.90	2,457

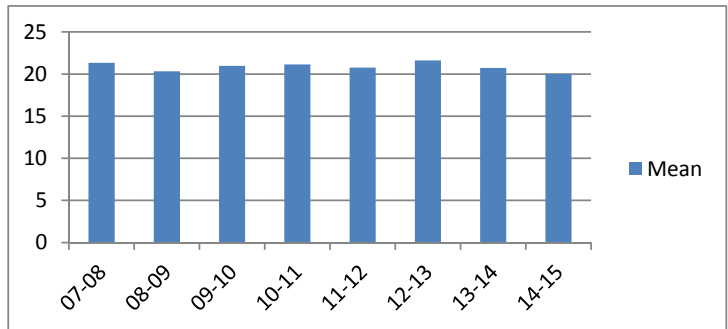


Average Probation Lengths in Months by Felony Class

Note: Column N indicates the number of felony convictions. Individual offenders can have multiple convictions. Incarceration includes life without parole and death sentences. Probation includes sentences to community corrections.

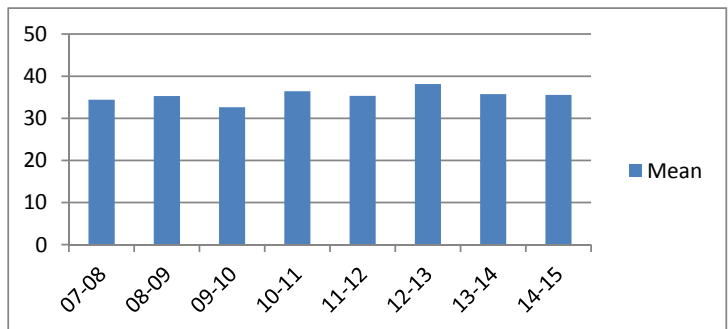
Average Probation Length - Class E - Standard Offenders

Fiscal Year	Mean	Median	Standard Deviation	N
07-08	21.34	24.00	11.81	3,879
08-09	20.33	24.00	9.84	3,619
09-10	20.97	24.00	9.80	3,766
10-11	21.14	24.00	12.59	3,554
11-12	20.77	24.00	9.34	3,625
12-13	21.61	24.00	11.58	4,026
13-14	20.72	24.00	8.56	4,283
14-15	20.02	24.00	7.99	2,009



Average Probation Length - Class E - Multiple Offenders

Fiscal Year	Mean	Median	Standard Deviation	N
07-08	34.42	36.00	10.70	274
08-09	35.30	36.00	10.09	325
09-10	32.63	24.00	9.90	339
10-11	36.42	36.00	10.75	437
11-12	35.33	36.00	10.43	376
12-13	38.15	36.00	10.55	550
13-14	35.74	36.00	10.89	575
14-15	35.55	36.00	10.63	358



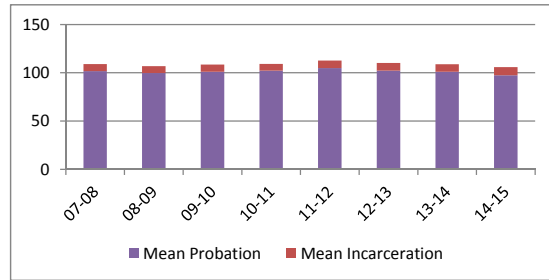
Average Split Sentence Lengths in Months by Felony Class

Note: Column N indicates the number of felony convictions. Individual offenders can have multiple convictions. Incarceration includes life without parole and death sentences. Probation includes sentences to community corrections.

Average Sentence Length - Felony Class B - All Offenders

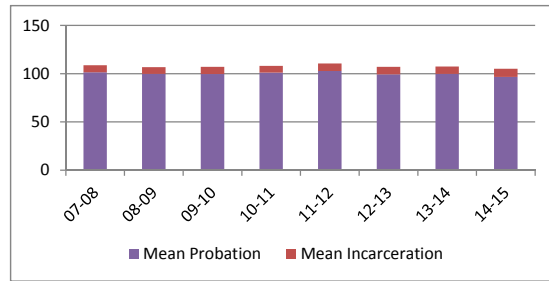
Fiscal Year	Months of Incarceration				Months of Probation			
	Mean	Median	Standard Deviation	N	Mean	Median	Standard Deviation	N
07-08	7.4	6.0	4.3	468	101.7	96.0	22.1	468
08-09	7.0	6.0	4.4	382	99.8	96.0	16.4	382
09-10	7.4	6.0	4.3	428	101.1	96.0	20.2	428
10-11	7.0	6.0	4.3	580	102.1	96.0	19.5	580
11-12	7.8	8.9	4.3	522	104.9	96.0	23.6	522
12-13	7.9	8.0	4.7	559	102.2	96.0	22.6	559
13-14	7.8	7.2	4.2	423	101.1	96.0	18.6	423
14-15	8.5	9.1	4.3	221	97.5	96.0	18.1	221

The table for multiple offenders was not included due to low occurrence frequencies.



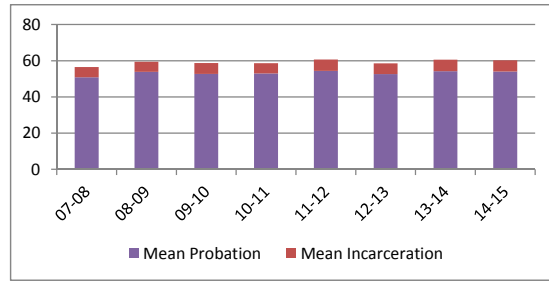
Average Sentence Length - Felony Class B - Standard Offenders

Fiscal Year	Months of Incarceration				Months of Probation			
	Mean	Median	Standard Deviation	N	Mean	Median	Standard Deviation	N
07-08	7.3	6.0	4.3	459	101.5	96.0	22.0	459
08-09	7.0	6.0	4.4	377	99.8	96.0	16.3	377
09-10	7.5	6.0	4.3	415	99.6	96.0	17.7	415
10-11	6.9	6.0	4.4	564	101.2	96.0	18.6	564
11-12	7.8	8.9	4.2	494	102.7	96.0	20.7	494
12-13	7.8	6.2	4.7	528	99.2	96.0	15.8	528
13-14	7.7	7.0	4.2	411	99.8	96.0	16.3	411
14-15	8.5	9.1	4.3	215	96.6	96.0	17.2	215



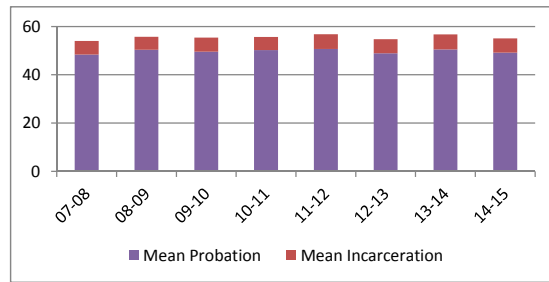
Average Sentence Length - Class C - All Offenders

Fiscal Year	Months of Incarceration				Months of Probation			
	Mean	Median	Standard Deviation	N	Mean	Median	Standard Deviation	N
07-08	5.7	4.9	4.2	1,207	50.8	48.0	22.2	1,207
08-09	5.5	4.0	4.2	1,235	53.9	48.0	23.2	1,235
09-10	6.0	5.3	4.3	1,371	52.7	48.0	21.7	1,371
10-11	5.6	4.9	4.2	1,558	53.0	48.0	22.8	1,558
11-12	6.3	5.9	4.2	1,799	54.4	48.0	21.4	1,799
12-13	6.0	5.0	4.1	1,723	52.6	48.0	21.0	1,723
13-14	6.4	6.0	4.5	1,707	54.2	48.0	21.1	1,707
14-15	6.1	6.0	4.0	712	54.1	48.0	23.0	712



Average Sentence Length - Class C - Standard Offenders

Fiscal Year	Months of Incarceration				Months of Probation			
	Mean	Median	Standard Deviation	N	Mean	Median	Standard Deviation	N
07-08	5.6	4.1	4.2	1,132	48.4	46.7	19.9	1,132
08-09	5.4	4.0	4.1	1,128	50.4	48.0	19.6	1,128
09-10	5.9	5.0	4.3	1,266	49.6	48.0	18.1	1,266
10-11	5.4	4.0	4.2	1,446	50.2	48.0	19.6	1,446
11-12	6.1	5.9	4.2	1,647	50.7	48.0	17.3	1,647
12-13	5.8	4.8	4.0	1,576	48.9	48.0	16.8	1,576
13-14	6.2	5.9	4.5	1,537	50.5	48.0	17.7	1,537
14-15	5.9	5.9	4.0	632	49.2	48.0	16.6	632

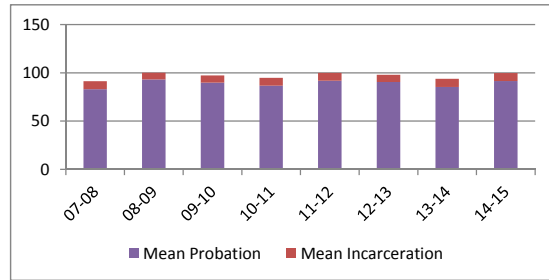


Average Split Sentence Lengths in Months by Felony Class

Note: Column N indicates the number of felony convictions. Individual offenders can have multiple convictions. Incarceration includes life without parole and death sentences. Probation includes sentences to community corrections.

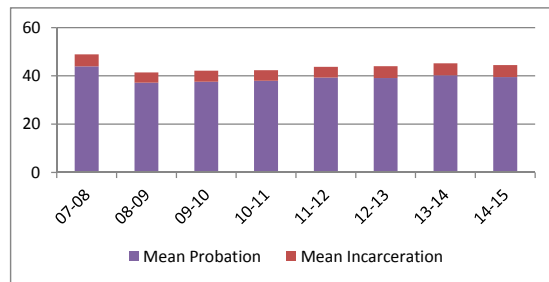
Average Sentence Length - Class C - Multiple Offenders

Fiscal Year	Months of Incarceration				Months of Probation			
	Mean	Median	Standard Deviation	N	Mean	Median	Standard Deviation	N
07-08	8.3	11.8	4.4	62	83.1	84.0	19.1	62
08-09	6.9	6.0	5.1	100	93.2	96.0	23.7	100
09-10	7.4	7.9	4.6	97	89.9	89.0	22.2	97
10-11	8.2	9.0	4.1	95	86.6	84.0	24.1	95
11-12	8.1	9.0	4.1	137	91.9	96.0	19.5	137
12-13	7.5	6.0	4.6	134	90.5	92.5	20.9	134
13-14	8.5	12.0	4.0	159	85.3	84.0	20.5	159
14-15	8.4	10.0	3.9	70	91.5	89.6	25.5	70



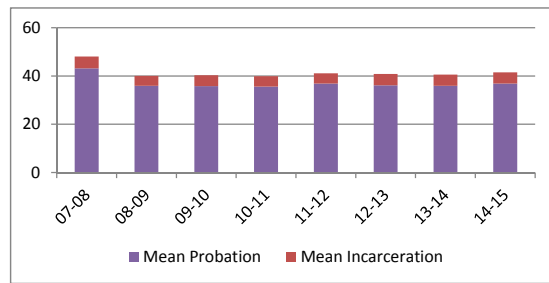
Average Sentence Length - Class D - All Offenders

Fiscal Year	Months of Incarceration				Months of Probation			
	Mean	Median	Standard Deviation	N	Mean	Median	Standard Deviation	N
07-08	4.9	3.4	4.1	1,460	43.9	36.0	32.6	1,460
08-09	4.2	3.0	3.5	1,435	37.2	36.0	19.0	1,435
09-10	4.6	3.6	3.7	1,601	37.6	36.0	17.8	1,601
10-11	4.4	3.0	3.7	1,787	37.9	36.0	18.2	1,787
11-12	4.4	3.0	3.6	1,831	39.3	36.0	18.2	1,831
12-13	4.9	3.9	3.8	1,860	39.1	36.0	20.7	1,860
13-14	4.9	3.9	3.8	1,720	40.2	36.0	19.9	1,720
14-15	5.0	3.9	4.0	822	39.5	36.0	16.9	822



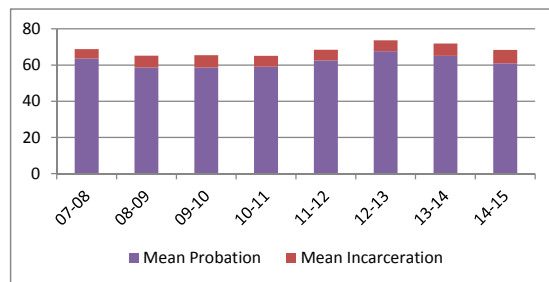
Average Sentence Length - Class D - Standard Offenders

Fiscal Year	Months of Incarceration				Months of Probation			
	Mean	Median	Standard Deviation	N	Mean	Median	Standard Deviation	N
07-08	4.9	3.3	4.1	1,405	43.1	36.0	32.6	1,405
08-09	4.1	3.0	3.4	1,381	36.0	36.0	17.6	1,381
09-10	4.5	3.3	3.7	1,514	35.8	36.0	15.3	1,514
10-11	4.3	3.0	3.6	1,659	35.6	36.0	15.1	1,659
11-12	4.2	3.0	3.5	1,686	36.8	36.0	15.3	1,686
12-13	4.7	3.7	3.7	1,715	36.1	36.0	17.4	1,715
13-14	4.6	3.6	3.6	1,509	35.9	36.0	14.4	1,509
14-15	4.7	3.1	3.8	747	36.8	36.0	13.6	747



Average Sentence Length - Class D - Multiple Offenders

Fiscal Year	Months of Incarceration				Months of Probation			
	Mean	Median	Standard Deviation	N	Mean	Median	Standard Deviation	N
07-08	5.1	4.0	4.1	49	63.6	60.0	22.5	49
08-09	6.6	6.0	4.1	42	58.6	48.0	20.3	42
09-10	6.7	6.0	4.1	72	58.7	56.1	19.1	72
10-11	6.0	5.9	3.7	106	59.1	56.2	17.7	106
11-12	5.9	6.0	4.0	127	62.5	60.0	18.0	127
12-13	6.0	5.0	4.1	117	67.6	68.0	19.4	117
13-14	6.8	6.0	4.1	174	65.1	60.0	19.1	174
14-15	7.4	5.3	5.1	67	61.0	60.0	16.5	67

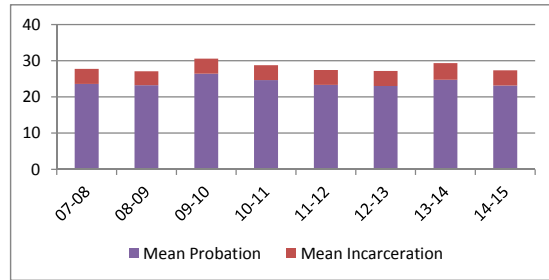


Average Split Sentence Lengths in Months by Felony Class

Note: Column N indicates the number of felony convictions. Individual offenders can have multiple convictions. Incarceration includes life without parole and death sentences. Probation includes sentences to community corrections.

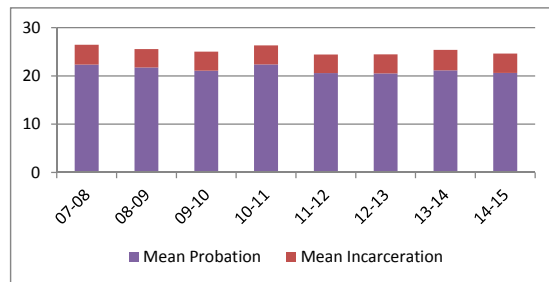
Average Sentence Length - Class E - All Offenders

Fiscal Year	Months of Incarceration				Months of Probation			
	Mean	Median	Standard Deviation	N	Mean	Median	Standard Deviation	N
07-08	4.2	3.0	3.3	2,016	23.6	23.0	16.9	2,016
08-09	3.9	3.0	2.9	2,212	23.2	23.2	13.3	2,212
09-10	4.2	3.3	3.2	1,915	26.4	23.0	22.5	1,915
10-11	4.1	3.0	3.1	2,075	24.6	24.0	14.6	2,075
11-12	4.1	3.0	3.2	1,953	23.3	23.0	13.9	1,953
12-13	4.2	3.0	3.2	1,937	23.0	22.5	14.6	1,937
13-14	4.6	3.9	3.3	1,741	24.7	24.0	15.7	1,741
14-15	4.2	3.0	3.0	839	23.1	24.0	13.0	839



Average Sentence Length - Class E - Standard Offenders

Fiscal Year	Months of Incarceration				Months of Probation			
	Mean	Median	Standard Deviation	N	Mean	Median	Standard Deviation	N
07-08	4.1	3.0	3.3	1,867	22.3	22.0	16.3	1,867
08-09	3.8	3.0	2.8	2,021	21.8	22.7	11.8	2,021
09-10	3.9	3.0	3.1	1,660	21.1	21.0	13.0	1,660
10-11	3.9	3.0	3.0	1,795	22.4	23.0	13.2	1,795
11-12	3.9	3.0	2.9	1,683	20.6	21.0	11.2	1,683
12-13	4.0	3.0	3.0	1,719	20.5	21.5	10.7	1,719
13-14	4.2	3.0	3.1	1,449	21.2	22.0	13.0	1,449
14-15	4.0	3.0	2.9	712	20.6	22.4	11.0	712



Average Sentence Length - Class E - Multiple Offenders

Fiscal Year	Months of Incarceration				Months of Probation			
	Mean	Median	Standard Deviation	N	Mean	Median	Standard Deviation	N
07-08	4.9	4.0	3.5	118	35.4	36.0	14.6	118
08-09	4.5	3.9	3.1	158	34.9	36.0	14.4	158
09-10	5.6	6.0	3.1	209	61.9	48.0	39.8	209
10-11	5.3	4.9	3.5	231	34.8	36.0	10.6	231
11-12	5.3	4.0	4.0	213	35.8	36.0	13.8	213
12-13	5.8	5.0	3.7	158	35.2	36.0	11.7	158
13-14	5.7	5.0	3.4	213	35.4	36.0	10.2	213
14-15	5.2	4.9	3.3	107	33.1	34.0	10.2	107

