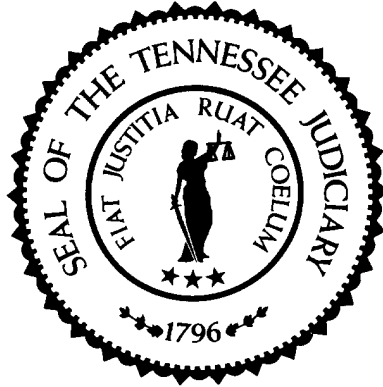


# Sentencing Practices in Tennessee



Administrative Office of the Courts

Information for Cases Sentenced Between  
July 1, 2006 and June 30, 2014

TDOC Data Extracted: October 2014  
Released: December 2014

## Sentencing Practices in Tennessee Contents

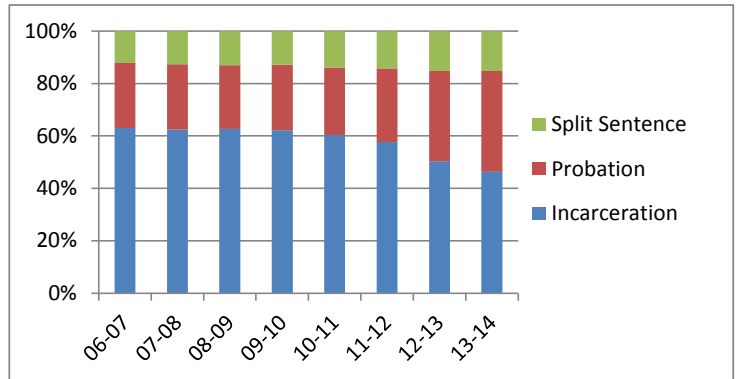
Sentence Type Information	
Class A	1
Class B	1
Class C	2
Class D	2
Class E	2
Average Incarceration Lengths in Months	
Class A	3
Rape of Child	4
Second Degree Murder	4
Especially Aggravated Kidnapping	5
Class B	7
Schedule II Cocaine	7
Aggravated Robbery	8
Aggravated Sexual Battery	9
Class C	9
Aggravated Burglary	10
Aggravated Assault	11
Schedule II Cocaine < ½ Gram	13
Schedule II Drugs: Max \$100,000 Fine	14
Class D	15
Theft: \$1,000 to \$10,000	16
Burglary Other Than Habitation	17
Identity Theft	18
Obtain Drugs by Fraud	19
Class E	20
Forgery: Up to \$1,000	21
Burglary: Auto	22
Theft: \$500 to \$1,000	23
Schedule VI Drugs: Not < ½ Ounce	24
Habitual Traffic Offender	25
Failure to Appear (Felony)	26
Average Probation Lengths in Months	
Class B	27
Class C	27
Class D	28
Class E	29
Average Split Sentence Lengths in Months	
Class B	31
Class C	31
Class D	32
Class E	33

### Sentence Type Information

Note: N indicates the number of felonies convicted, not the number of individual offenders. Incarceration includes life without parole and death sentences, probation includes sentences to community corrections.

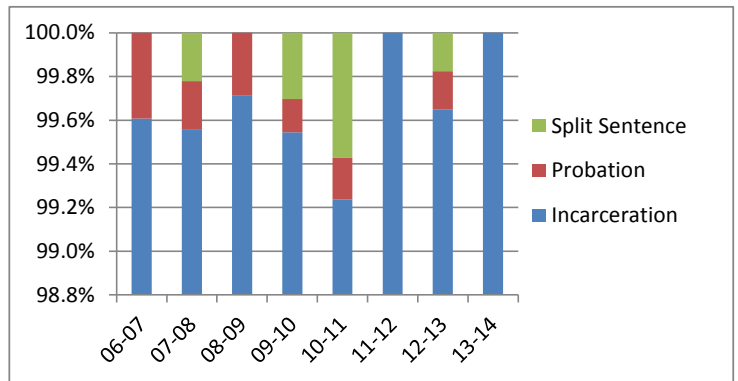
**Sentence Type - All Felonies - All Offenders**

	Incarceration	Probation	Split Sentence	N
	Percent	Percent	Percent	
06-07	63.0%	24.8%	12.1%	41,316
07-08	62.4%	25.0%	12.7%	40,824
08-09	62.6%	24.4%	13.0%	40,813
09-10	62.1%	25.1%	12.7%	41,837
10-11	60.3%	25.8%	13.9%	43,401
11-12	57.7%	28.0%	14.3%	42,913
12-13	50.4%	34.5%	15.2%	39,905
13-14	46.3%	38.5%	15.2%	35,933



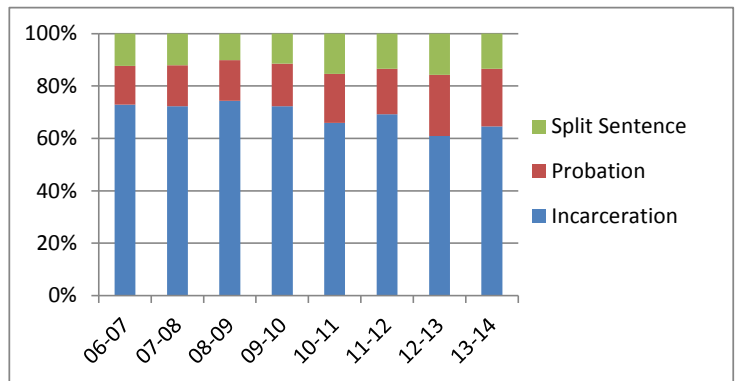
**Sentence Type - Felony Class A - All Offenders**

	Incarceration	Probation	Split Sentence	N
	Percent	Percent	Percent	
06-07	99.6%	0.4%	0.0%	509
07-08	99.6%	0.2%	0.2%	454
08-09	99.7%	0.3%	0.0%	699
09-10	99.5%	0.2%	0.3%	659
10-11	99.2%	0.2%	0.6%	524
11-12	100.0%	0.0%	0.0%	641
12-13	99.7%	0.2%	0.2%	572
13-14	100.0%	0.0%	0.0%	585



**Sentence Type - Felony Class B - All Offenders**

	Incarceration	Probation	Split Sentence	N
	Percent	Percent	Percent	
06-07	72.8%	14.8%	12.3%	4,082
07-08	72.2%	15.6%	12.1%	3,902
08-09	74.3%	15.6%	10.1%	3,796
09-10	72.2%	16.3%	11.5%	3,741
10-11	65.9%	18.7%	15.4%	3,830
11-12	69.2%	17.3%	13.5%	3,849
12-13	60.9%	23.4%	15.7%	3,433
13-14	64.6%	22.0%	13.5%	3,016

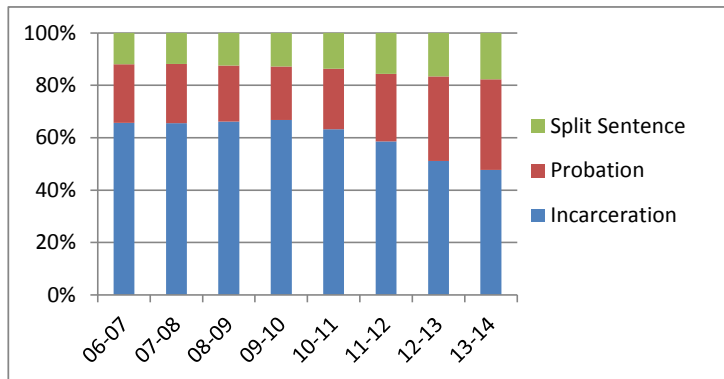


### Sentence Type Information

Note: N indicates the number of felonies convicted, not the number of individual offenders. Incarceration includes life without parole and death sentences, probation includes sentences to community corrections.

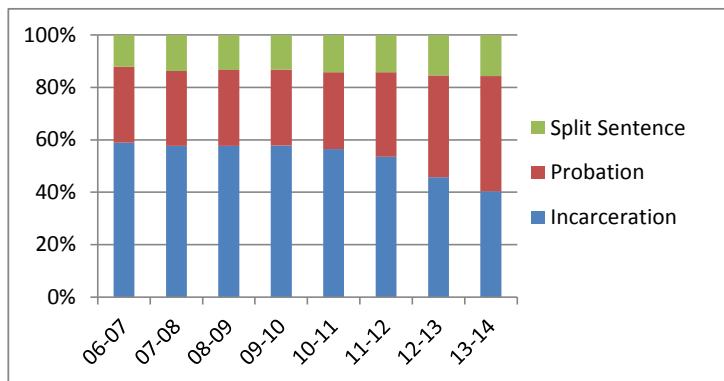
**Sentence Type - Felony Class C - All Offenders**

	Incarceration	Probation	Split Sentence	N
	Percent	Percent	Percent	
06-07	65.6%	22.4%	12.0%	10,234
07-08	65.5%	22.6%	11.9%	10,195
08-09	66.2%	21.5%	12.4%	10,037
09-10	66.8%	20.4%	12.8%	10,719
10-11	63.3%	23.1%	13.7%	11,535
11-12	58.6%	25.8%	15.6%	11,465
12-13	51.1%	32.2%	16.6%	10,307
13-14	47.7%	34.6%	17.6%	9,482



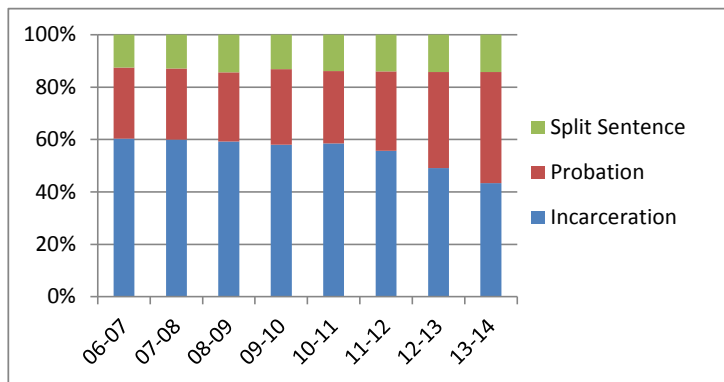
**Sentence Type - Felony Class D - All Offenders**

	Incarceration	Probation	Split Sentence	N
	Percent	Percent	Percent	
06-07	58.9%	29.0%	12.1%	10,122
07-08	57.7%	28.5%	13.7%	10,607
08-09	57.7%	29.0%	13.3%	10,842
09-10	57.8%	28.9%	13.3%	12,087
10-11	56.5%	29.3%	14.3%	12,670
11-12	53.6%	32.2%	14.3%	13,062
12-13	45.8%	38.8%	15.4%	12,104
13-14	40.3%	44.1%	15.6%	10,731



**Sentence Type - Felony Class E - All Offenders**

	Incarceration	Probation	Split Sentence	N
	Percent	Percent	Percent	
06-07	60.4%	27.1%	12.5%	16,369
07-08	60.0%	27.1%	12.9%	15,666
08-09	59.2%	26.4%	14.4%	15,439
09-10	58.1%	28.8%	13.1%	14,631
10-11	58.5%	27.6%	13.9%	14,842
11-12	55.7%	30.2%	14.0%	13,896
12-13	49.1%	36.6%	14.3%	13,490
13-14	43.4%	42.4%	14.2%	12,119

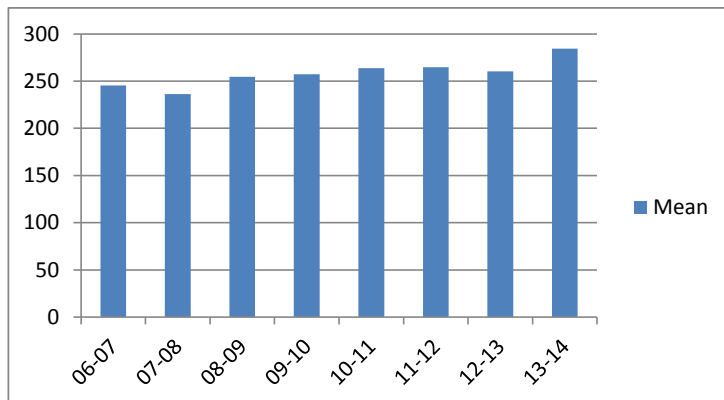


### Average Incarceration Lengths in Months by Felony Class and Offense

Note: N indicates the number of felonies convicted, not the number of individual offenders. Incarceration includes life without parole and death sentences, probation includes sentences to community corrections.

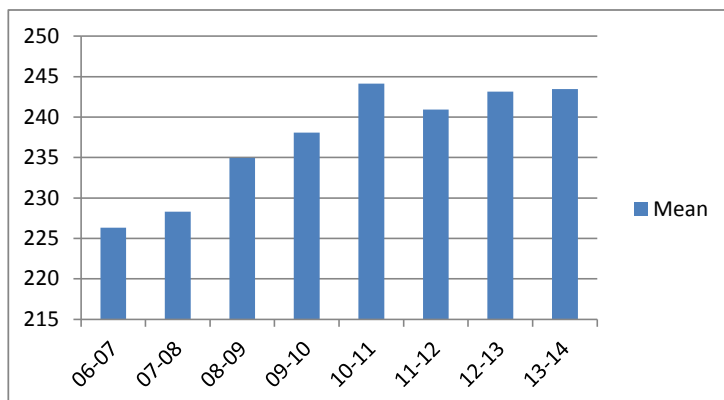
**Incarceration Length - Class A - All Offenders**

	Mean	Median	Standard Deviation	N
06-07	245.54	240.00	91.40	507
07-08	236.34	216.00	74.84	452
08-09	254.72	240.00	86.01	697
09-10	257.31	240.00	87.14	656
10-11	263.86	240.00	90.26	520
11-12	264.86	240.00	93.33	641
12-13	260.36	240.00	81.41	570
13-14	284.52	264.00	117.69	585



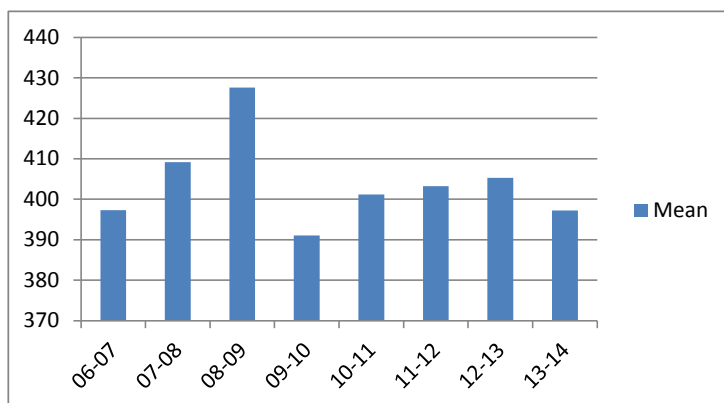
**Incarceration Length - Class A - Standard Offenders**

	Mean	Median	Standard Deviation	N
06-07	226.31	240.00	47.48	416
07-08	228.29	216.00	44.83	395
08-09	234.95	240.00	42.98	591
09-10	238.06	240.00	49.54	535
10-11	244.13	240.00	47.55	429
11-12	240.95	240.00	47.17	495
12-13	243.14	240.00	48.52	476
13-14	243.45	240.00	48.27	420



**Incarceration Length - Class A - Multiple Offenders**

	Mean	Median	Standard Deviation	N
06-07	397.28	420.00	75.12	47
07-08	409.20	408.00	62.40	20
08-09	427.64	480.00	60.37	66
09-10	391.07	384.00	67.64	73
10-11	401.19	396.00	62.50	52
11-12	403.26	390.00	56.42	76
12-13	405.31	414.00	58.75	58
13-14	397.25	384.00	67.50	106

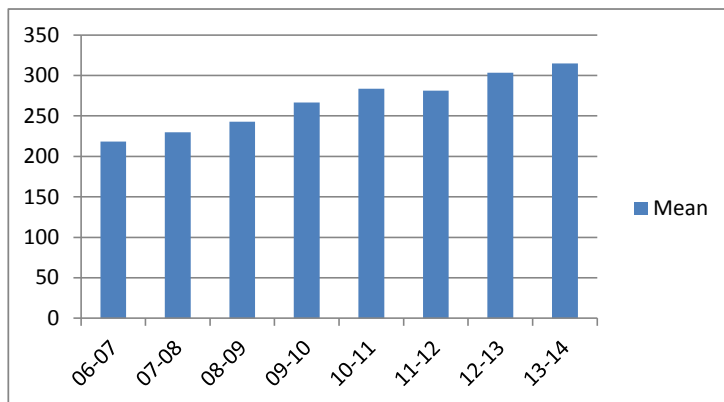


### Average Incarceration Lengths in Months by Felony Class and Offense

Note: N indicates the number of felonies convicted, not the number of individual offenders. Incarceration includes life without parole and death sentences, probation includes sentences to community corrections.

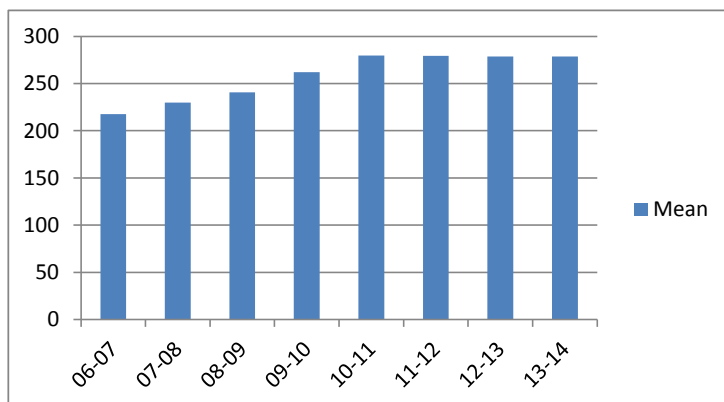
**Incarceration Length - Rape of a Child - All Offenders**

	Mean	Median	Standard Deviation	N
06-07	218.27	180.00	52.23	140
07-08	229.88	216.00	44.20	121
08-09	243.07	240.00	38.40	201
09-10	266.60	300.00	49.27	129
10-11	283.50	300.00	46.62	92
11-12	281.18	300.00	40.93	102
12-13	303.22	300.00	66.13	82
13-14	314.92	300.00	70.27	111



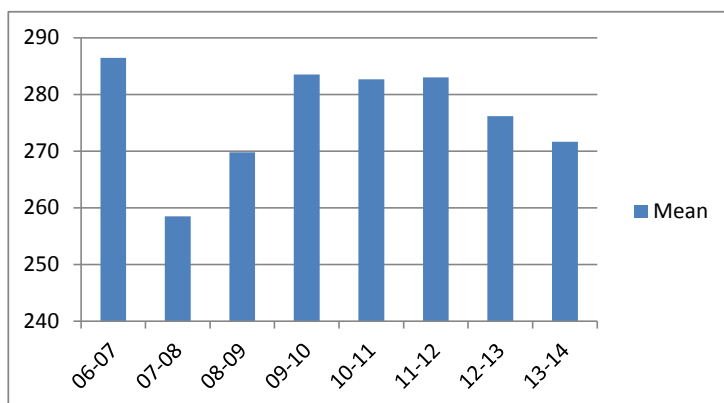
**Incarceration Length - Rape of a Child - Standard Offenders**

	Mean	Median	Standard Deviation	N
06-07	217.58	180.00	50.22	133
07-08	229.88	216.00	44.20	121
08-09	240.70	240.00	32.67	198
09-10	262.05	300.00	45.79	123
10-11	279.56	300.00	30.46	86
11-12	279.21	300.00	35.96	101
12-13	278.77	300.00	42.99	65
13-14	278.72	300.00	41.92	75



**Incarceration Length - Second Degree Murder - All Offenders**

	Mean	Median	Standard Deviation	N
06-07	286.50	264.00	95.27	92
07-08	258.49	240.00	83.88	86
08-09	269.82	240.00	94.85	116
09-10	283.57	258.00	96.60	126
10-11	282.67	258.00	96.24	107
11-12	283.02	240.00	102.48	118
12-13	276.21	270.00	92.03	84
13-14	271.66	270.00	73.57	94



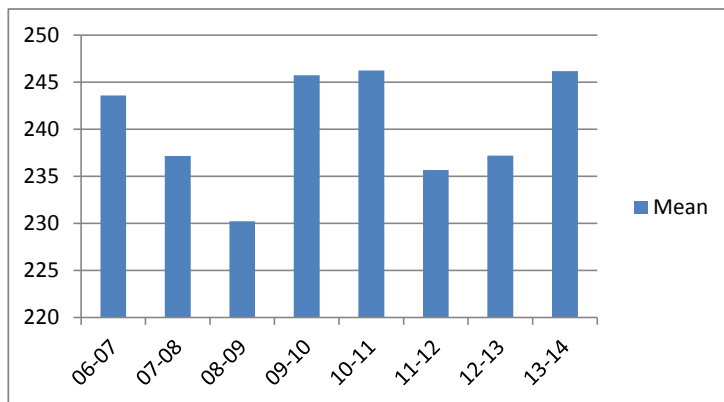
The table for multiple offenders was not included due to low occurrence frequencies.

### Average Incarceration Lengths in Months by Felony Class and Offense

Note: N indicates the number of felonies convicted, not the number of individual offenders. Incarceration includes life without parole and death sentences, probation includes sentences to community corrections.

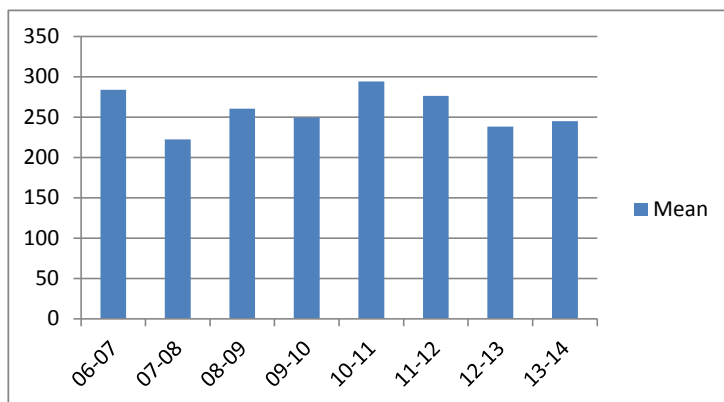
**Incarceration Length - Second Degree Murder - Standard Offenders**

	Mean	Median	Standard Deviation	N
06-07	243.60	240.00	44.26	70
07-08	237.17	240.00	50.22	72
08-09	230.23	240.00	41.20	90
09-10	245.73	240.00	45.23	88
10-11	246.24	240.00	42.76	74
11-12	235.67	240.00	44.38	79
12-13	237.19	240.00	49.31	62
13-14	246.16	240.00	47.31	74



**Incarceration Length - Especially Aggravated Kidnapping - All Offenders**

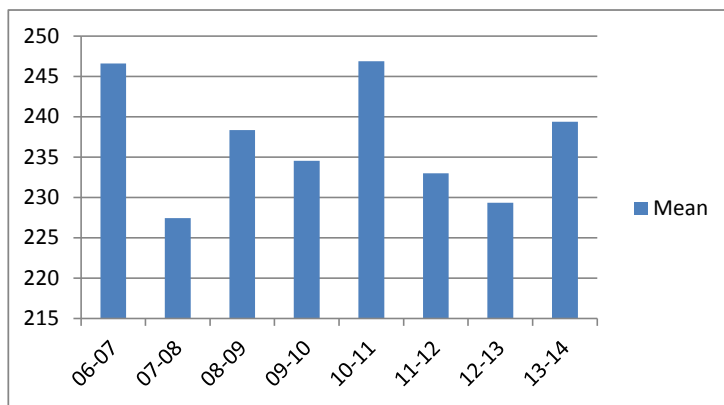
	Mean	Median	Standard Deviation	N
06-07	284.00	252.00	130.64	39
07-08	222.43	222.00	71.63	28
08-09	260.28	240.00	104.00	79
09-10	249.54	240.00	100.85	56
10-11	294.37	264.00	121.94	49
11-12	276.20	240.00	116.91	88
12-13	238.17	240.00	67.58	69
13-14	245.16	240.00	87.77	43



The table for multiple offenders was not included due to low occurrence frequencies.

**Incarceration Length - Especially Aggravated Kidnapping - Standard Offenders**

	Mean	Median	Standard Deviation	N
06-07	246.62	240.00	39.36	29
07-08	227.45	240.00	44.20	22
08-09	238.37	240.00	52.33	59
09-10	234.55	240.00	50.61	44
10-11	246.90	246.00	47.76	40
11-12	233.00	240.00	45.04	66
12-13	229.35	240.00	47.26	62
13-14	239.38	240.00	44.73	39

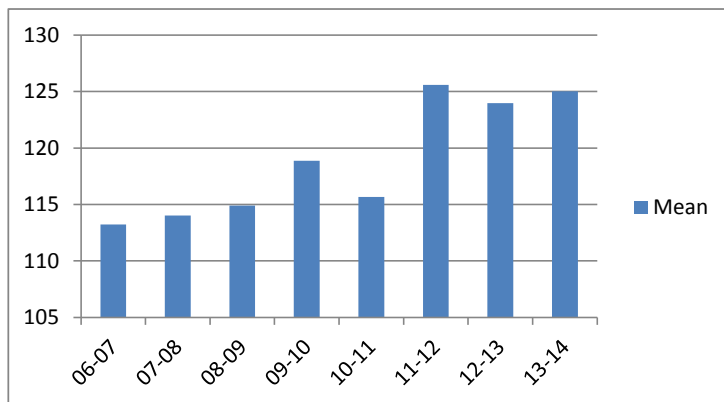


### Average Incarceration Lengths in Months by Felony Class and Offense

Note: N indicates the number of felonies convicted, not the number of individual offenders. Incarceration includes life without parole and death sentences, probation includes sentences to community corrections.

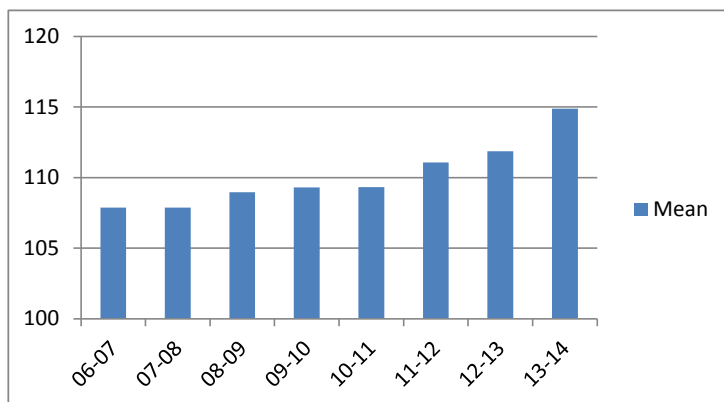
**Incarceration Length - Felony Class B - All Offenders**

	Mean	Median	Standard Deviation	N
06-07	113.23	96.00	32.40	2,973
07-08	114.01	96.00	35.30	2,817
08-09	114.91	96.00	33.87	2,819
09-10	118.88	96.00	41.80	2,702
10-11	115.68	96.00	35.32	2,522
11-12	125.58	120.00	46.07	2,662
12-13	123.97	108.00	45.09	2,092
13-14	125.02	120.00	42.11	1,947



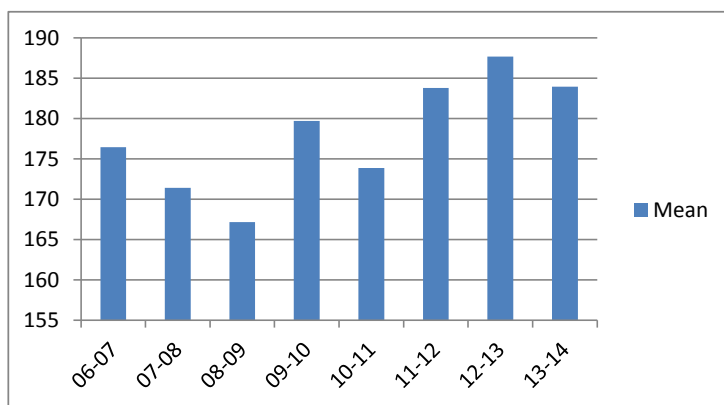
**Incarceration Length - Felony Class B - Standard Offenders**

	Mean	Median	Standard Deviation	N
06-07	107.88	96.00	17.12	2,536
07-08	107.88	96.00	17.41	2,376
08-09	108.97	96.00	17.85	2,376
09-10	109.31	96.00	19.66	2,170
10-11	109.33	96.00	18.47	2,047
11-12	111.08	96.00	20.42	2,044
12-13	111.87	108.00	19.17	1,731
13-14	114.88	108.00	21.55	1,622



**Incarceration Length - Felony Class B - Multiple Offenders**

	Mean	Median	Standard Deviation	N
06-07	176.43	180.00	34.70	215
07-08	171.39	168.00	34.65	213
08-09	167.15	156.00	35.62	227
09-10	179.68	180.00	37.64	284
10-11	173.84	168.00	36.84	214
11-12	183.78	180.00	35.86	411
12-13	187.64	180.00	42.01	219
13-14	183.92	180.00	40.72	196



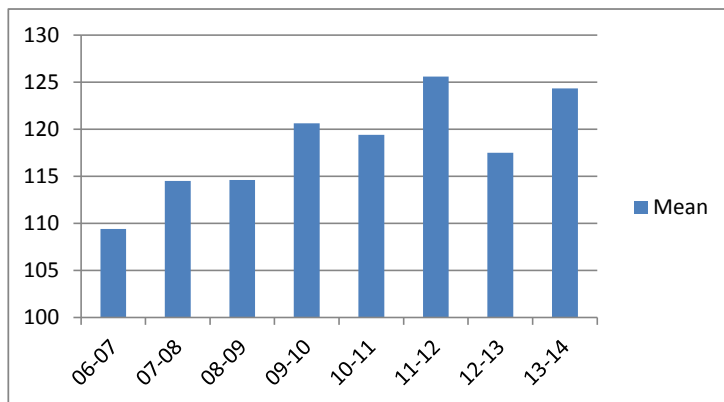


### Average Incarceration Lengths in Months by Felony Class and Offense

Note: N indicates the number of felonies convicted, not the number of individual offenders. Incarceration includes life without parole and death sentences, probation includes sentences to community corrections.

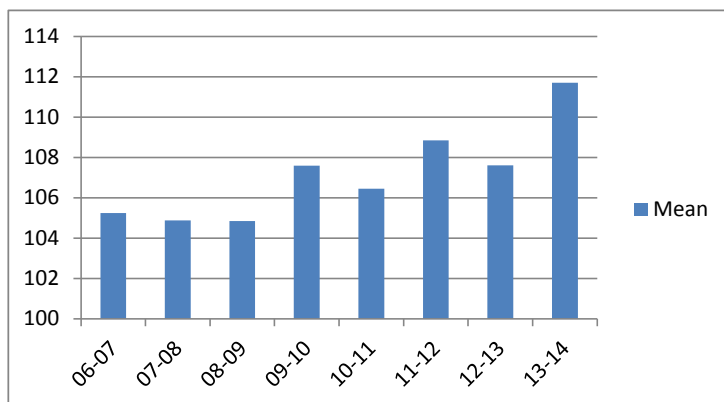
**Incarceration Length - Schedule II Cocaine - All Offenders**

	Mean	Median	Standard Deviation	N
06-07	109.41	96.00	25.89	968
07-08	114.51	96.00	39.20	949
08-09	114.62	96.00	33.27	762
09-10	120.62	96.00	45.87	604
10-11	119.43	99.00	38.59	462
11-12	125.59	108.00	48.81	468
12-13	117.51	108.00	32.58	361
13-14	124.34	120.00	40.48	290



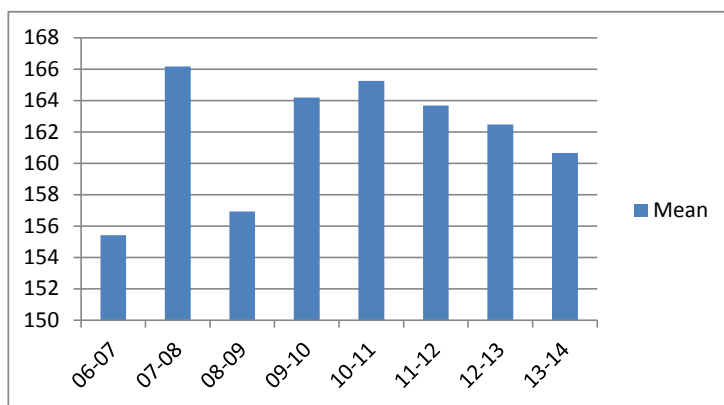
**Incarceration Length - Schedule II Cocaine - Standard Offenders**

	Mean	Median	Standard Deviation	N
06-07	105.25	96.00	15.16	890
07-08	104.88	96.00	15.93	837
08-09	104.85	96.00	14.68	643
09-10	107.60	96.00	21.36	496
10-11	106.46	96.00	17.11	377
11-12	108.85	96.00	22.68	365
12-13	107.61	96.00	19.11	290
13-14	111.71	96.00	21.38	228



**Incarceration Length - Schedule II Cocaine - Multiple Offenders**

	Mean	Median	Standard Deviation	N
06-07	155.42	144.00	32.48	62
07-08	166.18	156.00	35.00	84
08-09	156.93	144.00	28.60	103
09-10	164.18	144.00	41.86	88
10-11	165.26	156.00	33.95	70
11-12	163.67	144.00	35.45	86
12-13	162.48	144.00	39.45	62
13-14	160.65	144.00	32.01	49

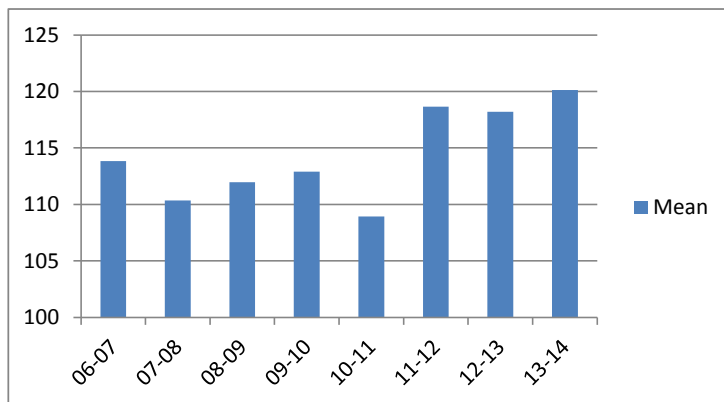


### Average Incarceration Lengths in Months by Felony Class and Offense

Note: N indicates the number of felonies convicted, not the number of individual offenders. Incarceration includes life without parole and death sentences, probation includes sentences to community corrections.

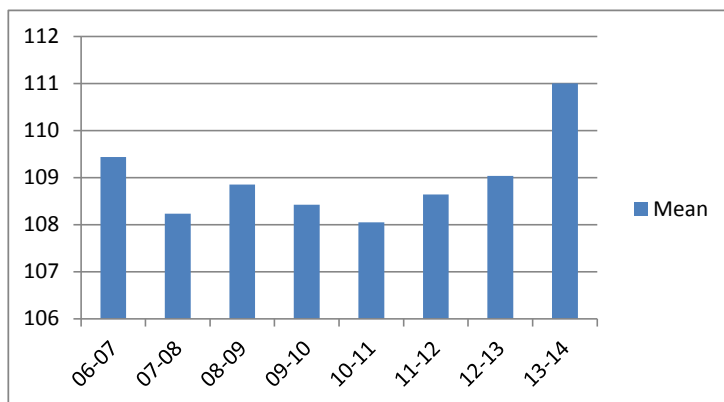
**Incarceration Length - Aggravated Robbery - All Offenders**

	Mean	Median	Standard Deviation	N
06-07	113.84	96.00	33.27	1,028
07-08	110.36	96.00	34.92	813
08-09	111.97	96.00	34.21	919
09-10	112.91	96.00	36.58	905
10-11	108.93	96.00	30.44	750
11-12	118.66	96.00	48.32	636
12-13	118.19	96.00	45.84	512
13-14	120.12	96.00	43.16	497



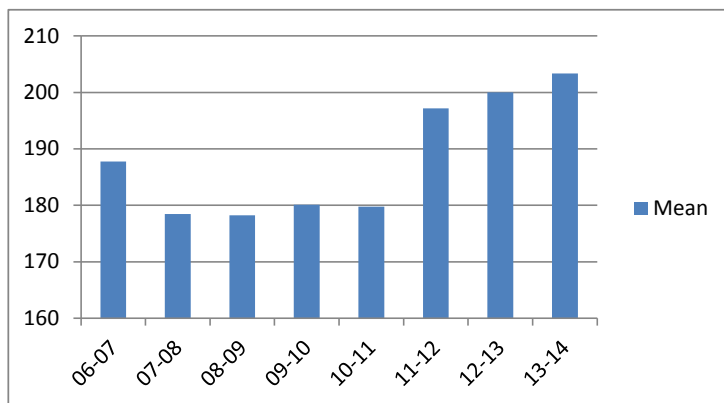
**Incarceration Length - Aggravated Robbery - Standard Offenders**

	Mean	Median	Standard Deviation	N
06-07	109.44	96.00	16.38	759
07-08	108.24	96.00	17.04	617
08-09	108.85	96.00	17.31	702
09-10	108.43	96.00	20.68	652
10-11	108.05	96.00	16.90	557
11-12	108.64	96.00	18.01	458
12-13	109.04	96.00	17.73	404
13-14	111.01	96.00	18.04	405



**Incarceration Length - Aggravated Robbery - Multiple Offenders**

	Mean	Median	Standard Deviation	N
06-07	187.74	180.00	29.96	93
07-08	178.46	180.00	36.02	39
08-09	178.22	174.00	39.17	54
09-10	180.08	180.00	38.80	74
10-11	179.77	180.00	36.89	26
11-12	197.14	180.00	34.99	56
12-13	200.00	192.00	37.55	33
13-14	203.37	216.00	34.08	38



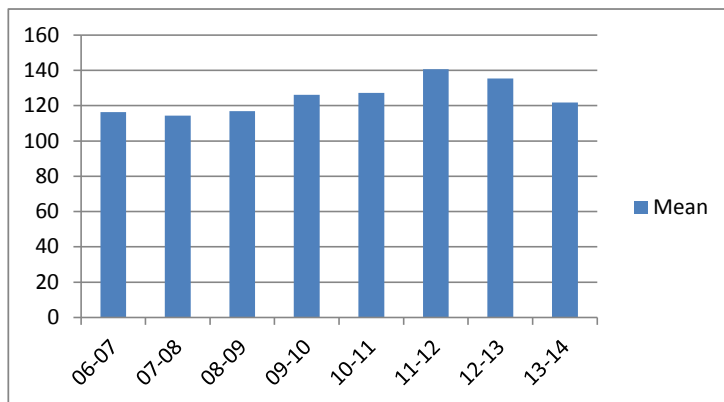
### Average Incarceration Lengths in Months by Felony Class and Offense

Note: N indicates the number of felonies convicted, not the number of individual offenders. Incarceration includes life without parole and death sentences, probation includes sentences to community corrections.

**Incarceration Length - Aggravated Sexual Battery - All Offenders**

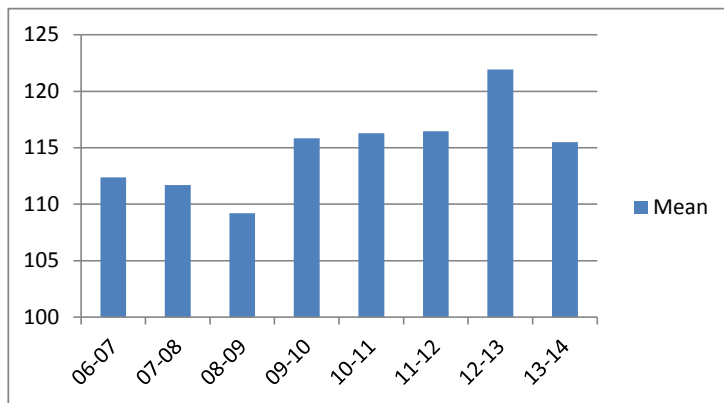
	Mean	Median	Standard Deviation	N
06-07	116.40	108.00	30.47	120
07-08	114.32	108.00	22.57	166
08-09	116.87	96.00	30.18	191
09-10	126.13	120.00	31.38	182
10-11	127.30	120.00	34.40	199
11-12	140.64	120.00	39.69	383
12-13	135.39	132.00	38.45	215
13-14	121.81	120.00	34.12	188

The table for multiple offenders was not included due to low occurrence frequencies.



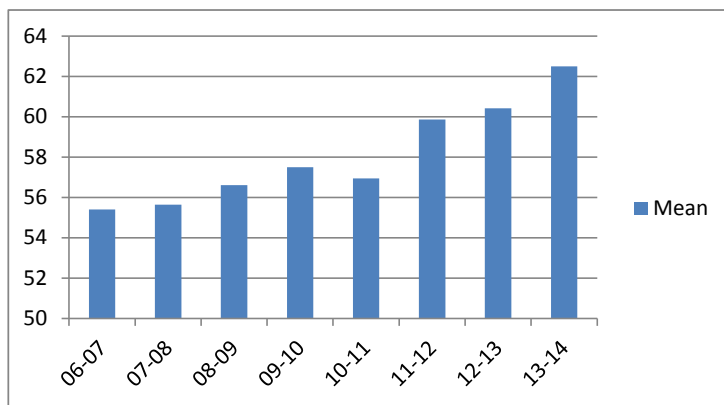
**Incarceration Length - Aggravated Sexual Battery - Standard Offenders**

	Mean	Median	Standard Deviation	N
06-07	112.38	108.00	17.86	115
07-08	111.69	102.00	18.67	156
08-09	109.20	96.00	17.93	170
09-10	115.84	120.00	18.38	153
10-11	116.28	120.00	18.04	171
11-12	116.46	120.00	16.00	251
12-13	121.92	120.00	19.25	178
13-14	115.50	120.00	18.19	168



**Incarceration Length - Class C - All Offenders**

	Mean	Median	Standard Deviation	N
06-07	55.41	48.00	24.83	6,718
07-08	55.64	48.00	24.38	6,679
08-09	56.62	48.00	24.30	6,640
09-10	57.51	48.00	27.16	7,157
10-11	56.95	48.00	25.49	7,296
11-12	59.86	48.00	29.34	6,714
12-13	60.41	48.00	29.51	5,271
13-14	62.50	60.00	29.82	4,524

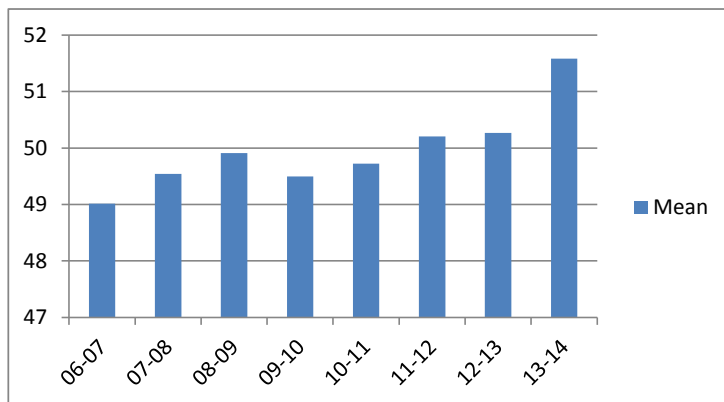


### Average Incarceration Lengths in Months by Felony Class and Offense

Note: N indicates the number of felonies convicted, not the number of individual offenders. Incarceration includes life without parole and death sentences, probation includes sentences to community corrections.

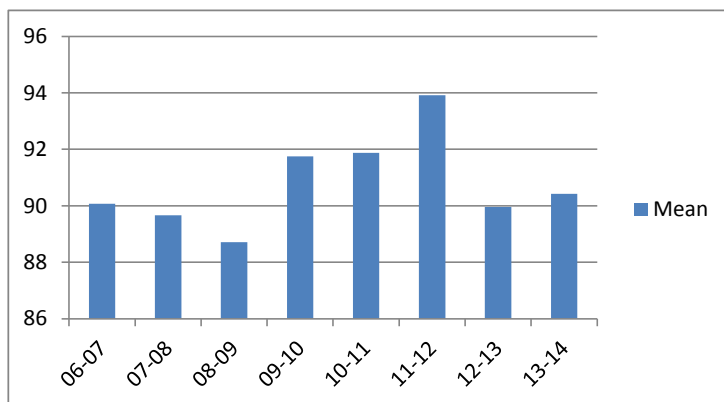
**Incarceration Length - Class C - Standard Offenders**

	Mean	Median	Standard Deviation	N
06-07	49.01	48.00	15.47	5,771
07-08	49.54	48.00	15.49	5,764
08-09	49.91	48.00	15.46	5,568
09-10	49.50	48.00	16.08	6,002
10-11	49.72	48.00	15.64	6,170
11-12	50.21	48.00	16.97	5,473
12-13	50.27	48.00	15.98	4,207
13-14	51.58	48.00	16.51	3,526



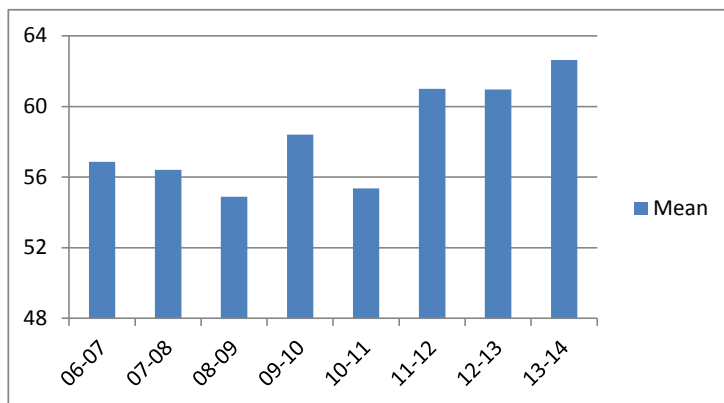
**Incarceration Length - Class C - Multiple Offenders**

	Mean	Median	Standard Deviation	N
06-07	90.07	84.00	20.15	699
07-08	89.66	96.00	19.94	662
08-09	88.71	84.00	20.67	848
09-10	91.75	96.00	21.24	887
10-11	91.87	96.00	22.37	869
11-12	93.91	96.00	22.15	927
12-13	89.96	84.00	22.09	787
13-14	90.42	84.00	20.30	750



**Incarceration Length - Aggravated Burglary - All Offenders**

	Mean	Median	Standard Deviation	N
06-07	56.87	48.00	27.61	1,540
07-08	56.41	48.00	26.46	1,478
08-09	54.89	48.00	24.17	1,592
09-10	58.40	48.00	28.49	2,035
10-11	55.36	48.00	24.78	2,102
11-12	61.01	48.00	31.28	2,096
12-13	60.97	48.00	32.44	1,599
13-14	62.64	54.00	31.78	1,200

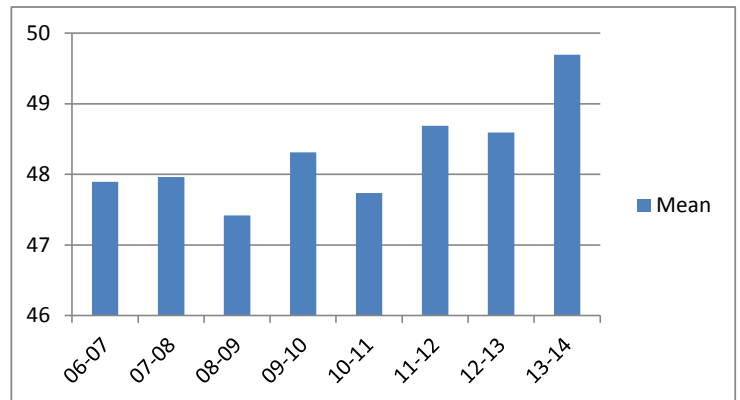


### Average Incarceration Lengths in Months by Felony Class and Offense

Note: N indicates the number of felonies convicted, not the number of individual offenders. Incarceration includes life without parole and death sentences, probation includes sentences to community corrections.

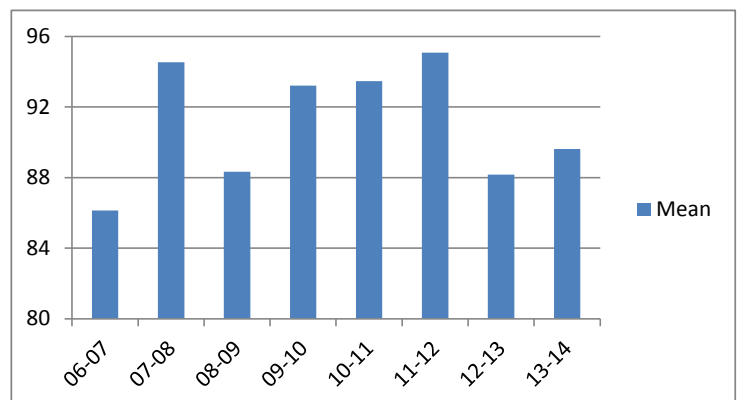
**Incarceration Length - Aggravated Burglary - Standard Offenders**

	Mean	Median	Standard Deviation	N
06-07	47.89	48.00	13.52	1,283
07-08	47.96	48.00	13.76	1,246
08-09	47.42	42.00	14.44	1,327
09-10	48.31	48.00	14.32	1,665
10-11	47.74	48.00	13.70	1,783
11-12	48.69	48.00	15.21	1,643
12-13	48.59	48.00	14.40	1,242
13-14	49.69	48.00	14.57	908



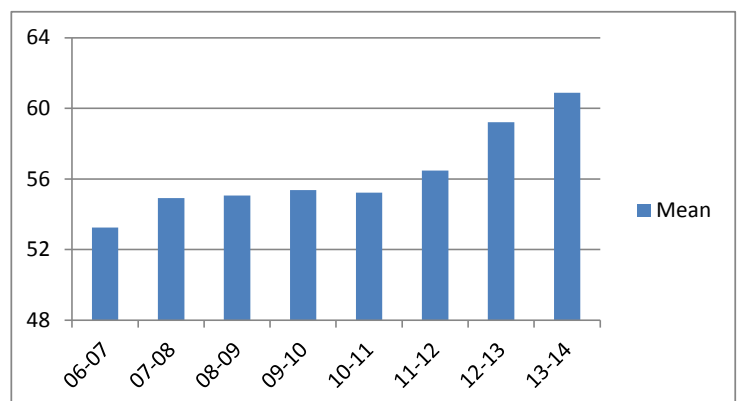
**Incarceration Length - Aggravated Burglary - Multiple Offenders**

	Mean	Median	Standard Deviation	N
06-07	86.14	72.00	18.98	158
07-08	94.54	96.00	18.40	150
08-09	88.33	84.00	19.28	209
09-10	93.21	96.00	18.53	284
10-11	93.48	96.00	20.21	233
11-12	95.08	96.00	21.60	310
12-13	88.17	84.00	20.89	246
13-14	89.63	84.00	19.96	209



**Incarceration Length - Aggravated Assault - All Offenders**

	Mean	Median	Standard Deviation	N
06-07	53.24	48.00	23.92	1,082
07-08	54.92	48.00	23.88	1,063
08-09	55.07	48.00	24.18	1,122
09-10	55.37	48.00	25.46	1,027
10-11	55.22	48.00	25.81	1,008
11-12	56.48	48.00	26.78	978
12-13	59.21	48.00	32.23	893
13-14	60.88	48.00	30.29	743

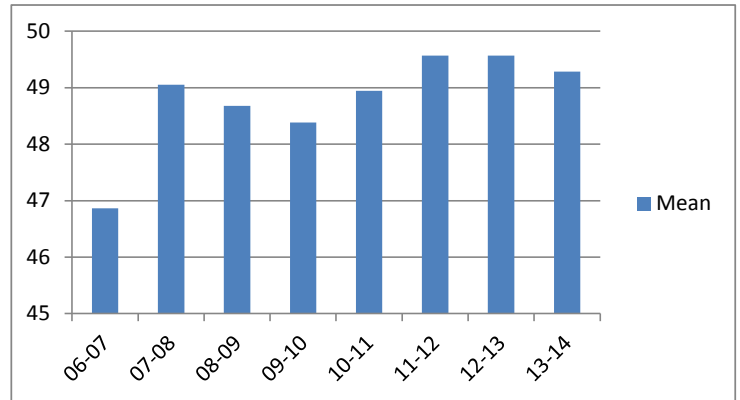


### Average Incarceration Lengths in Months by Felony Class and Offense

Note: N indicates the number of felonies convicted, not the number of individual offenders. Incarceration includes life without parole and death sentences, probation includes sentences to community corrections.

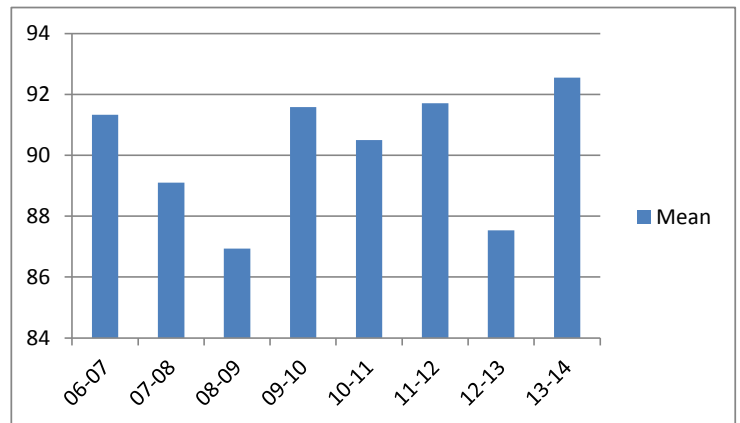
**Incarceration Length - Aggravated Assault - Standard Offenders**

	Mean	Median	Standard Deviation	N
06-07	46.86	36.00	15.49	914
07-08	49.06	48.00	14.84	929
08-09	48.68	48.00	14.81	943
09-10	48.38	36.03	15.32	880
10-11	48.94	48.00	15.36	879
11-12	49.57	48.00	16.48	844
12-13	49.57	48.00	15.28	727
13-14	49.29	48.00	14.80	576



**Incarceration Length - Aggravated Assault - Multiple Offenders**

	Mean	Median	Standard Deviation	N
06-07	91.33	96.00	19.64	136
07-08	89.10	96.00	19.23	106
08-09	86.93	84.00	22.00	138
09-10	91.59	96.00	21.42	111
10-11	90.50	90.00	20.26	88
11-12	91.72	96.00	22.46	106
12-13	87.53	96.00	21.69	133
13-14	92.55	96.00	27.02	141

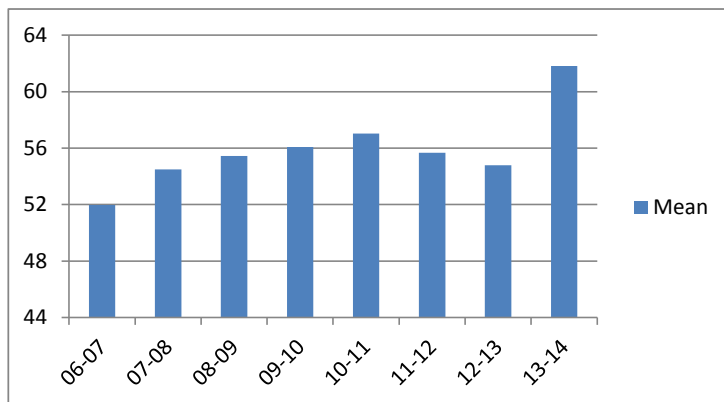


### Average Incarceration Lengths in Months by Felony Class and Offense

Note: N indicates the number of felonies convicted, not the number of individual offenders. Incarceration includes life without parole and death sentences, probation includes sentences to community corrections.

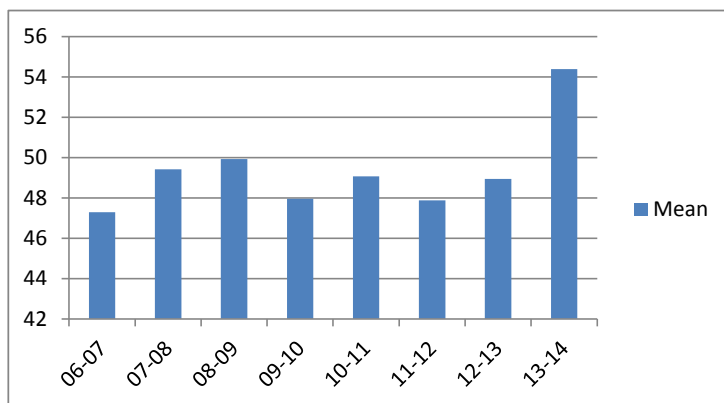
**Incarceration Length - Schedule II Cocaine < 1/2 Gram - All Offenders**

	Mean	Median	Standard Deviation	N
06-07	51.97	48.00	21.03	1,258
07-08	54.48	48.00	22.47	1,575
08-09	55.45	48.00	20.93	1,221
09-10	56.07	48.00	25.65	1,213
10-11	57.03	48.00	25.99	1,173
11-12	55.67	48.00	25.19	722
12-13	54.78	48.00	21.57	280
13-14	61.83	72.00	22.51	257



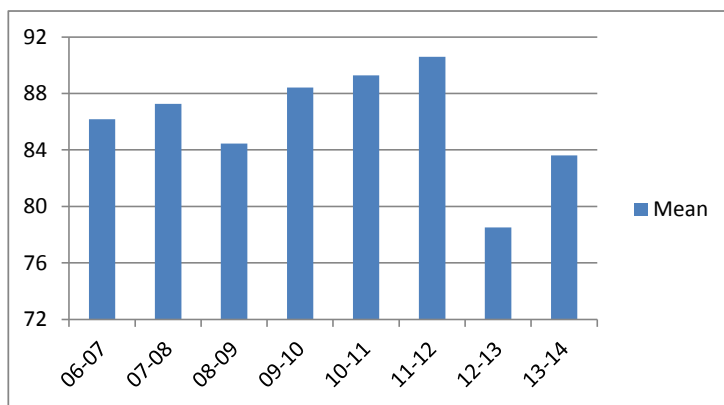
**Incarceration Length - Schedule II Cocaine < 1/2 Gram - Standard Offenders**

	Mean	Median	Standard Deviation	N
06-07	47.28	37.00	13.84	1,107
07-08	49.42	48.00	15.00	1,355
08-09	49.92	48.00	14.42	1,030
09-10	47.96	48.00	14.14	991
10-11	49.07	48.00	14.66	973
11-12	47.88	48.00	14.76	577
12-13	48.94	48.00	13.61	232
13-14	54.38	48.00	18.12	192



**Incarceration Length - Schedule II Cocaine < 1/2 Gram - Multiple Offenders**

	Mean	Median	Standard Deviation	N
06-07	86.17	73.00	20.00	121
07-08	87.26	96.00	19.27	163
08-09	84.46	84.00	17.70	163
09-10	88.42	84.00	20.98	178
10-11	89.28	73.00	26.69	163
11-12	90.60	84.00	24.31	113
12-13	78.51	72.00	19.53	41
13-14	83.61	72.00	19.06	62

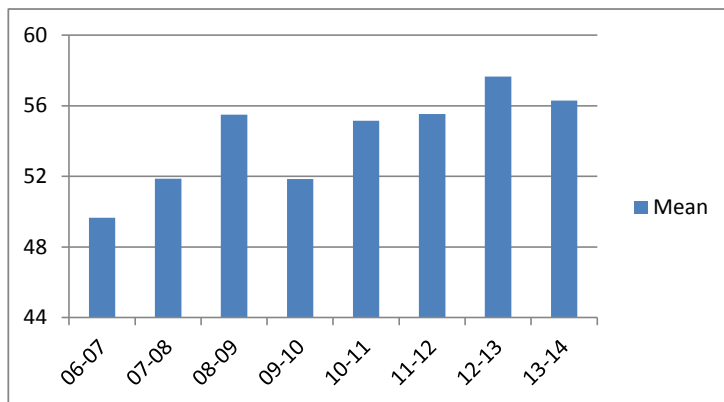


### Average Incarceration Lengths in Months by Felony Class and Offense

Note: N indicates the number of felonies convicted, not the number of individual offenders. Incarceration includes life without parole and death sentences, probation includes sentences to community corrections.

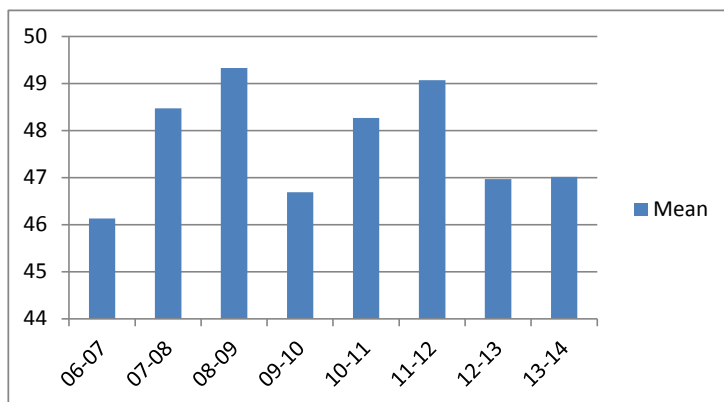
**Incarceration Length - Schedule II Drugs: Max \$100,000 Fine - All Offenders**

	Mean	Median	Standard Deviation	N
06-07	49.66	36.00	19.25	512
07-08	51.88	48.00	19.58	530
08-09	55.50	48.00	22.31	516
09-10	51.84	48.00	22.21	553
10-11	55.15	48.00	24.49	694
11-12	55.54	48.00	24.09	764
12-13	57.66	48.00	27.30	602
13-14	56.30	48.00	25.24	573



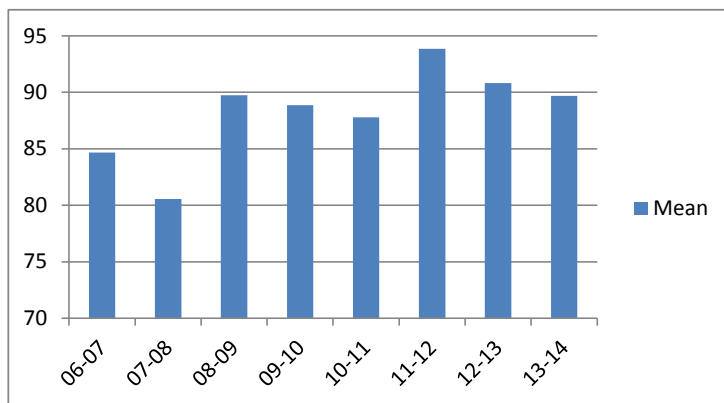
**Incarceration Length - Schedule II Drugs: Max \$100,000 Fine - Standard Offenders**

	Mean	Median	Standard Deviation	N
06-07	46.13	36.00	13.84	468
07-08	48.47	48.00	15.06	481
08-09	49.33	48.00	14.51	436
09-10	46.69	36.00	14.15	487
10-11	48.27	48.00	14.66	586
11-12	49.07	48.00	16.35	664
12-13	46.97	36.00	14.70	474
13-14	47.02	36.00	14.61	451



**Incarceration Length - Schedule II Drugs: Max \$100,000 Fine - Multiple Offenders**

	Mean	Median	Standard Deviation	N
06-07	84.66	72.00	20.48	38
07-08	80.56	72.00	16.34	41
08-09	89.75	84.00	22.46	73
09-10	88.86	96.00	21.15	57
10-11	87.78	72.00	19.75	91
11-12	93.86	96.00	21.48	84
12-13	90.82	96.00	19.60	105
13-14	89.68	84.00	20.81	93



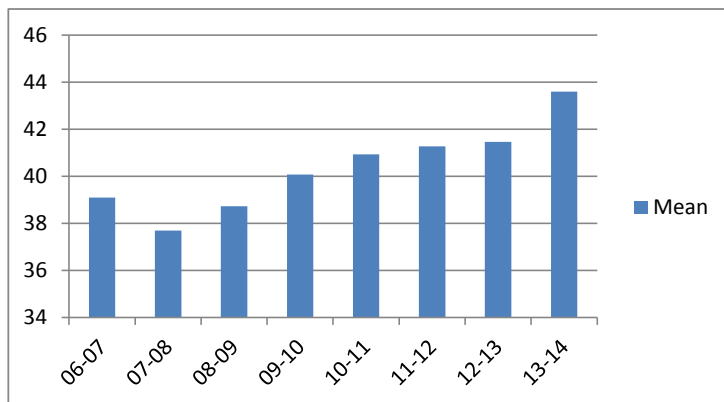


### Average Incarceration Lengths in Months by Felony Class and Offense

Note: N indicates the number of felonies convicted, not the number of individual offenders. Incarceration includes life without parole and death sentences, probation includes sentences to community corrections.

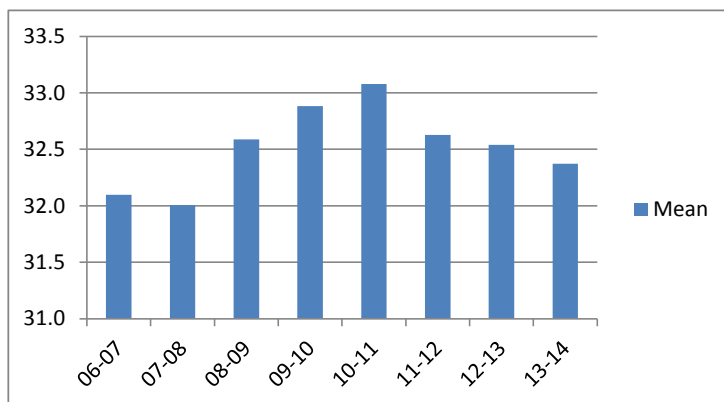
**Incarceration Length - Class D - All Offenders**

	Mean	Median	Standard Deviation	N
06-07	39.09	36.00	22.48	5,963
07-08	37.69	36.00	20.49	6,125
08-09	38.73	36.00	21.05	6,259
09-10	40.07	36.00	22.65	6,990
10-11	40.93	36.00	23.50	7,156
11-12	41.27	36.00	24.34	7,000
12-13	41.46	36.00	24.36	5,540
13-14	43.60	36.00	26.43	4,326



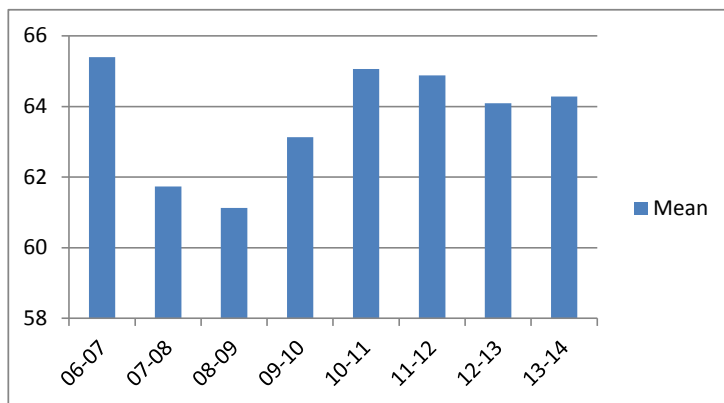
**Incarceration Length - Class D - Standard Offenders**

	Mean	Median	Standard Deviation	N
06-07	32.10	24.03	10.19	5,039
07-08	32.01	24.03	10.05	5,246
08-09	32.59	24.03	10.43	5,286
09-10	32.88	25.00	10.50	5,804
10-11	33.08	24.03	11.70	5,835
11-12	32.63	24.03	10.39	5,605
12-13	32.54	24.03	10.13	4,443
13-14	32.37	24.03	10.49	3,222



**Incarceration Length - Class D - Multiple Offenders**

	Mean	Median	Standard Deviation	N
06-07	65.40	60.00	18.09	710
07-08	61.73	60.00	17.79	656
08-09	61.13	60.00	17.82	742
09-10	63.13	60.00	18.36	866
10-11	65.07	60.00	17.66	991
11-12	64.89	60.00	18.81	1,046
12-13	64.10	60.00	18.54	770
13-14	64.28	60.00	17.72	824

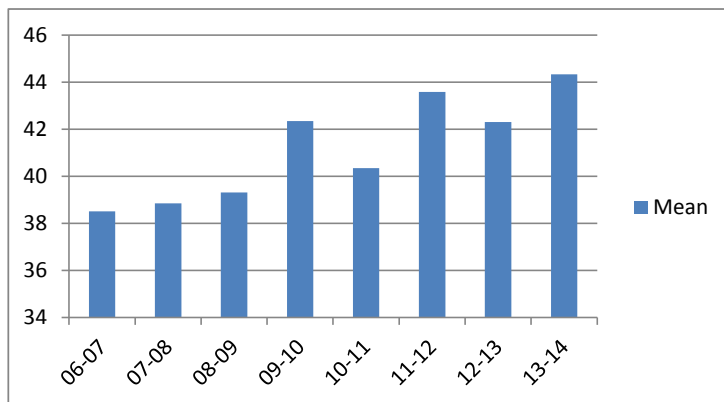


### Average Incarceration Lengths in Months by Felony Class and Offense

Note: N indicates the number of felonies convicted, not the number of individual offenders. Incarceration includes life without parole and death sentences, probation includes sentences to community corrections.

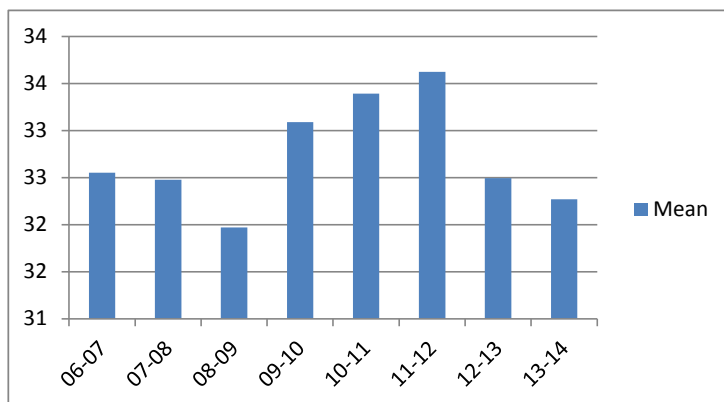
**Incarceration Length - Theft: \$1,000 to \$10,000 - All Offenders**

	Mean	Median	Standard Deviation	N
06-07	38.51	36.00	20.73	1,789
07-08	38.85	36.00	21.27	1,895
08-09	39.31	36.00	23.04	1,979
09-10	42.35	36.00	25.36	2,077
10-11	40.35	36.00	21.86	2,172
11-12	43.59	36.00	25.80	2,339
12-13	42.31	36.00	25.09	1,891
13-14	44.33	36.00	27.96	1,386



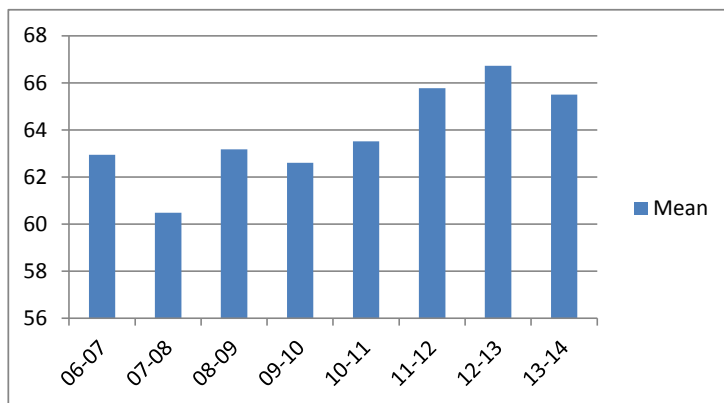
**Incarceration Length - Theft: \$1,000 to \$10,000 - Standard Offenders**

	Mean	Median	Standard Deviation	N
06-07	32.55	24.03	10.16	1,528
07-08	32.48	24.03	10.20	1,581
08-09	31.97	24.00	10.02	1,654
09-10	33.09	30.00	10.29	1,656
10-11	33.39	30.00	11.44	1,788
11-12	33.62	30.00	10.54	1,818
12-13	32.50	24.03	10.16	1,482
13-14	32.27	24.03	9.96	1,031



**Incarceration Length - Theft: \$1,000 to \$10,000 - Multiple Offenders**

	Mean	Median	Standard Deviation	N
06-07	62.94	60.00	18.98	209
07-08	60.48	57.00	16.95	244
08-09	63.18	60.00	19.48	242
09-10	62.61	60.00	17.97	288
10-11	63.52	60.00	16.94	298
11-12	65.77	60.00	19.38	388
12-13	66.73	72.00	20.13	301
13-14	65.50	60.00	19.31	264

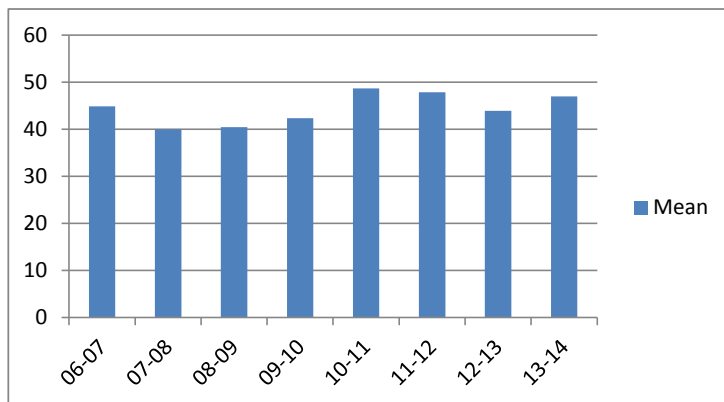


### Average Incarceration Lengths in Months by Felony Class and Offense

Note: N indicates the number of felonies convicted, not the number of individual offenders. Incarceration includes life without parole and death sentences, probation includes sentences to community corrections.

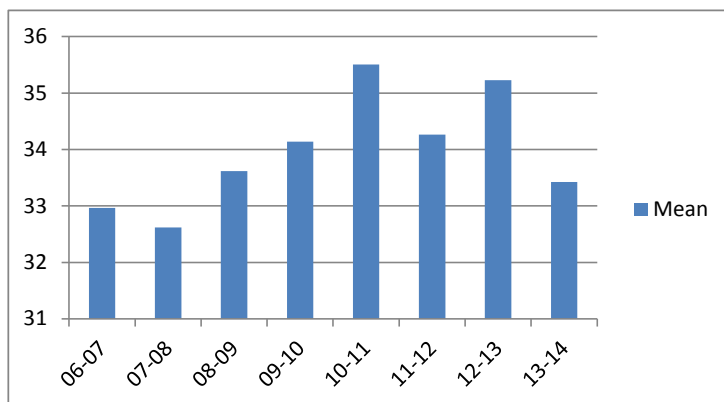
**Incarceration Length - Burglary Other Than Habitation - All Offenders**

	Mean	Median	Standard Deviation	N
06-07	44.87	36.00	28.42	1,052
07-08	40.00	36.00	24.02	1,102
08-09	40.50	36.00	22.07	1,038
09-10	42.38	36.00	23.23	1,018
10-11	48.69	36.00	28.96	1,198
11-12	47.90	36.00	29.80	1,011
12-13	43.92	36.00	23.51	809
13-14	46.99	42.00	26.73	631



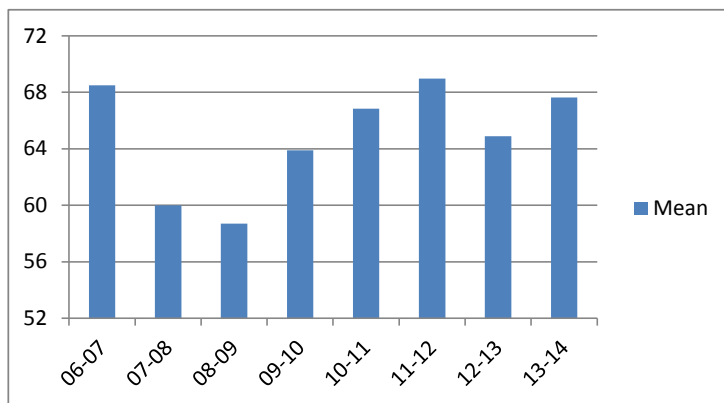
**Incarceration Length - Burglary Other Than Habitation - Standard Offenders**

	Mean	Median	Standard Deviation	N
06-07	32.96	24.33	10.34	816
07-08	32.62	24.03	10.12	923
08-09	33.62	36.00	10.54	854
09-10	34.14	36.00	10.99	813
10-11	35.50	36.00	15.53	841
11-12	34.26	36.00	10.85	742
12-13	35.23	36.00	10.66	637
13-14	33.43	30.00	10.49	437



**Incarceration Length - Burglary Other Than Habitation - Multiple Offenders**

	Mean	Median	Standard Deviation	N
06-07	68.51	72.00	18.08	167
07-08	60.00	48.00	16.33	120
08-09	58.70	48.00	15.87	134
09-10	63.91	60.00	17.16	148
10-11	66.84	72.00	15.19	268
11-12	68.98	72.00	20.46	179
12-13	64.88	60.00	16.97	129
13-14	67.65	72.00	17.26	153

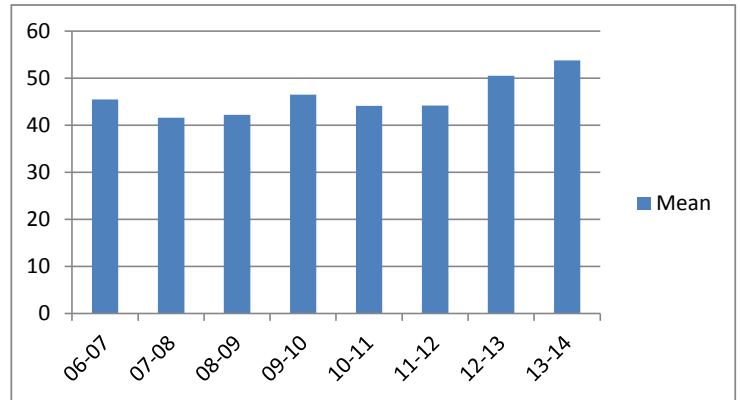


### Average Incarceration Lengths in Months by Felony Class and Offense

Note: N indicates the number of felonies convicted, not the number of individual offenders. Incarceration includes life without parole and death sentences, probation includes sentences to community corrections.

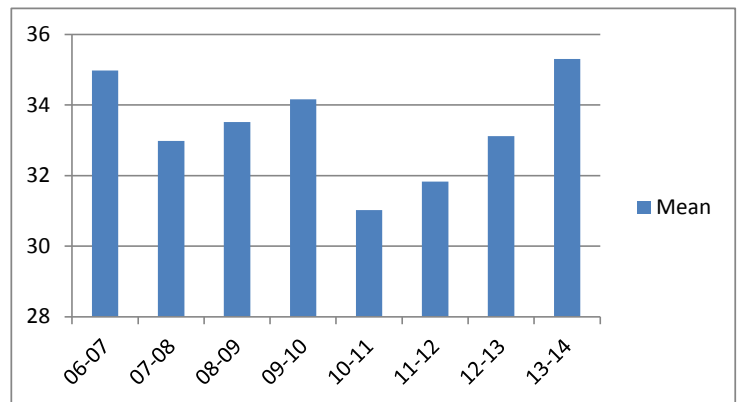
**Incarceration Length - Identity Theft - All Offenders**

	Mean	Median	Standard Deviation	N
06-07	45.43	36.00	25.31	485
07-08	41.60	36.00	22.89	574
08-09	42.21	36.00	23.21	539
09-10	46.48	48.00	25.93	531
10-11	44.12	36.00	29.59	458
11-12	44.19	36.00	25.61	467
12-13	50.47	36.00	32.35	381
13-14	53.78	48.00	32.10	256



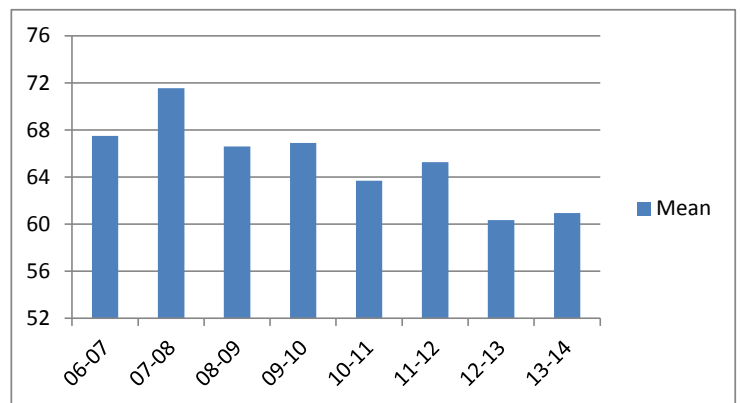
**Incarceration Length - Identity Theft - Standard Offenders**

	Mean	Median	Standard Deviation	N
06-07	34.98	36.00	9.81	373
07-08	32.98	30.00	9.92	469
08-09	33.51	33.00	10.55	434
09-10	34.16	36.00	10.38	374
10-11	31.03	24.00	10.21	341
11-12	31.83	24.03	9.75	328
12-13	33.12	30.00	10.13	256
13-14	35.30	36.00	10.76	149



**Incarceration Length - Identity Theft - Multiple Offenders**

	Mean	Median	Standard Deviation	N
06-07	67.50	72.00	13.28	88
07-08	71.56	72.00	19.94	81
08-09	66.60	60.00	18.00	80
09-10	66.90	72.00	19.80	127
10-11	63.71	60.00	20.95	78
11-12	65.29	66.00	16.02	118
12-13	60.34	60.00	14.80	71
13-14	60.95	48.00	15.98	76

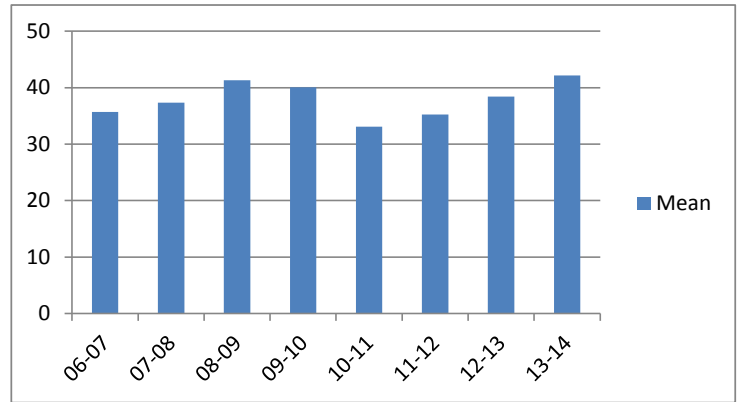


### Average Incarceration Lengths in Months by Felony Class and Offense

Note: N indicates the number of felonies convicted, not the number of individual offenders. Incarceration includes life without parole and death sentences, probation includes sentences to community corrections.

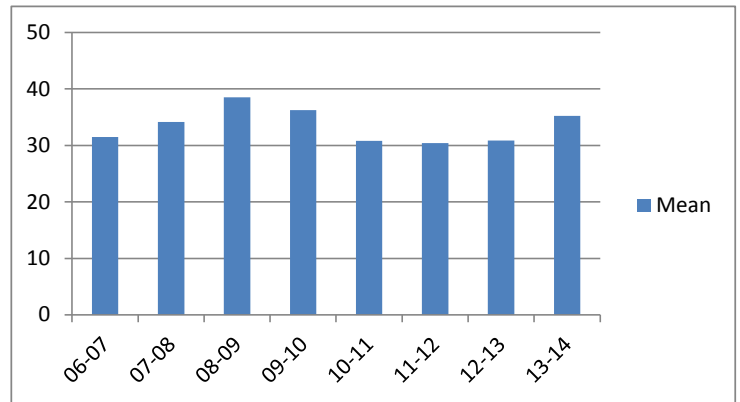
**Incarceration Length - Obtain Drugs by Fraud - All Offenders**

	Mean	Median	Standard Deviation	N
06-07	35.71	36.00	18.25	417
07-08	37.35	36.00	14.32	240
08-09	41.33	48.00	13.97	275
09-10	40.06	36.00	17.72	256
10-11	33.10	24.03	13.15	141
11-12	35.24	30.00	15.17	261
12-13	38.41	24.03	26.38	122
13-14	42.18	36.00	20.65	67



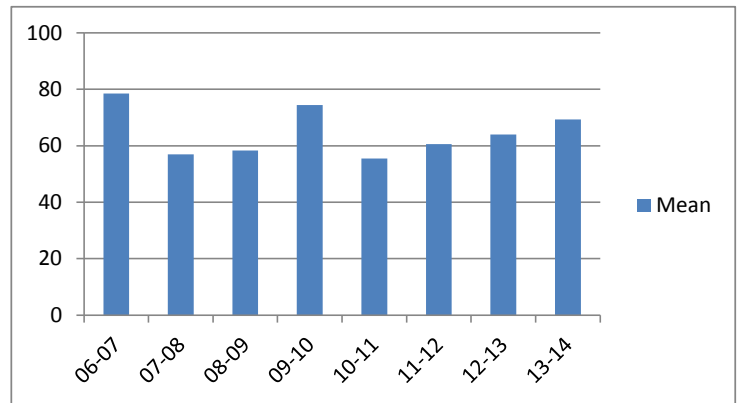
**Incarceration Length - Obtain Drugs by Fraud - Standard Offenders**

	Mean	Median	Standard Deviation	N
06-07	31.48	24.00	9.02	385
07-08	34.14	36.00	10.07	209
08-09	38.52	48.00	11.39	241
09-10	36.28	36.00	9.66	239
10-11	30.83	24.00	9.10	130
11-12	30.44	24.00	8.55	219
12-13	30.88	24.00	9.43	109
13-14	35.25	36.00	10.61	56



**Incarceration Length - Obtain Drugs by Fraud - Multiple Offenders**

	Mean	Median	Standard Deviation	N
06-07	78.50	96.00	21.52	24
07-08	56.97	48.00	15.91	30
08-09	58.26	60.00	10.18	31
09-10	74.40	72.00	21.47	5
10-11	55.50	48.00	10.99	8
11-12	60.59	48.00	17.59	41
12-13	64.00	72.00	12.39	6
13-14	69.33	72.00	14.42	9

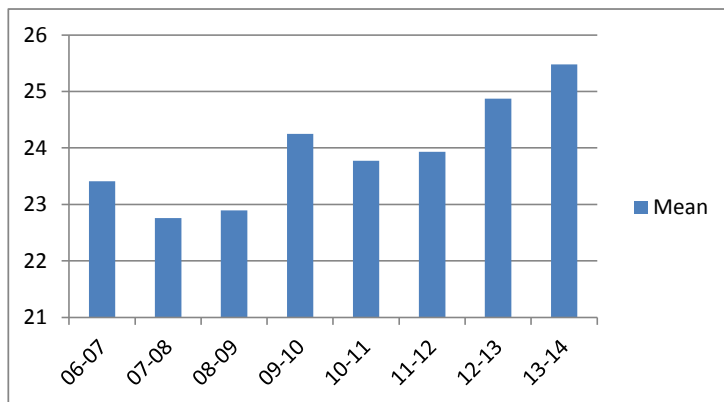


### Average Incarceration Lengths in Months by Felony Class and Offense

Note: N indicates the number of felonies convicted, not the number of individual offenders. Incarceration includes life without parole and death sentences, probation includes sentences to community corrections.

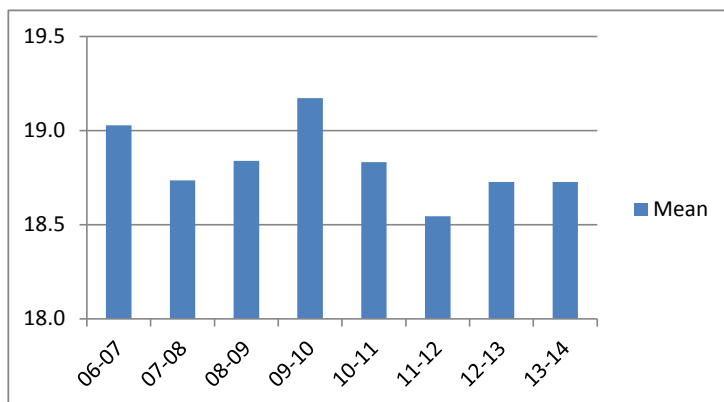
**Incarceration Length - Class E - All Offenders**

	Mean	Median	Standard Deviation	N
06-07	23.41	24.00	12.53	9,888
07-08	22.76	24.00	12.02	9,394
08-09	22.90	24.00	12.08	9,144
09-10	24.25	24.00	13.56	8,496
10-11	23.77	24.00	13.22	8,689
11-12	23.93	24.00	13.32	7,746
12-13	24.87	24.00	14.62	6,619
13-14	25.48	24.00	16.13	5,259



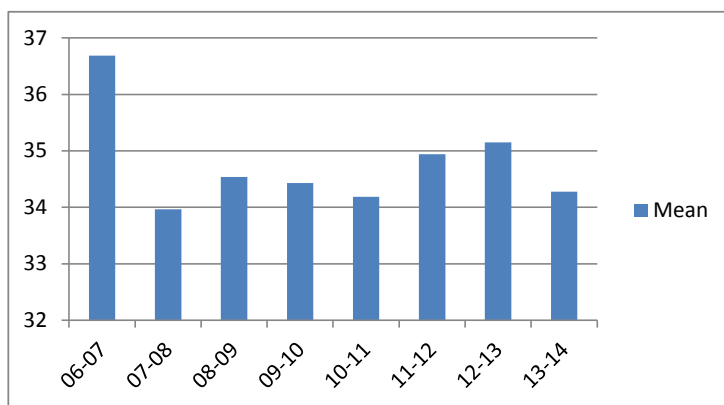
**Incarceration Length - Class E - Standard Offenders**

	Mean	Median	Standard Deviation	N
06-07	19.03	24.00	6.38	7,920
07-08	18.74	24.00	6.31	7,519
08-09	18.84	24.00	6.13	7,375
09-10	19.17	24.00	6.42	6,572
10-11	18.83	24.00	6.43	6,684
11-12	18.55	24.00	6.22	5,818
12-13	18.73	24.00	6.51	4,889
13-14	18.73	23.00	7.08	3,750



**Incarceration Length - Class E - Multiple Offenders**

	Mean	Median	Standard Deviation	N
06-07	36.68	36.00	10.71	1,624
07-08	33.97	36.00	10.61	1,455
08-09	34.53	36.00	10.21	1,374
09-10	34.43	36.00	10.55	1,388
10-11	34.18	36.00	10.44	1,509
11-12	34.94	36.00	10.55	1,498
12-13	35.15	36.00	10.77	1,202
13-14	34.27	36.00	10.67	1,097

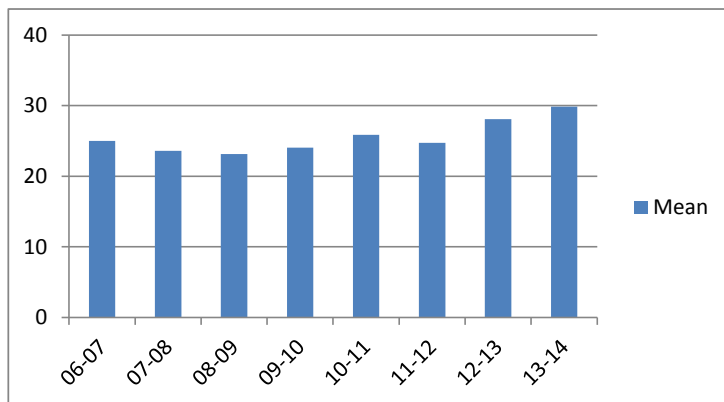


### Average Incarceration Lengths in Months by Felony Class and Offense

Note: N indicates the number of felonies convicted, not the number of individual offenders. Incarceration includes life without parole and death sentences, probation includes sentences to community corrections.

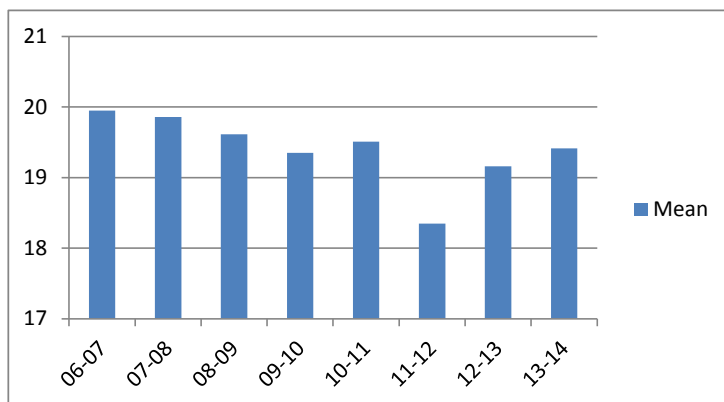
**Incarceration Length - Forgery: Up to \$1,000 - All Offenders**

	Mean	Median	Standard Deviation	N
06-07	25.03	24.00	13.64	3,031
07-08	23.60	24.00	11.87	2,757
08-09	23.16	24.00	11.64	2,486
09-10	24.06	24.00	12.49	1,767
10-11	25.89	24.00	14.92	1,477
11-12	24.74	24.00	14.52	1,148
12-13	28.08	24.00	17.90	1,138
13-14	29.88	24.00	24.75	639



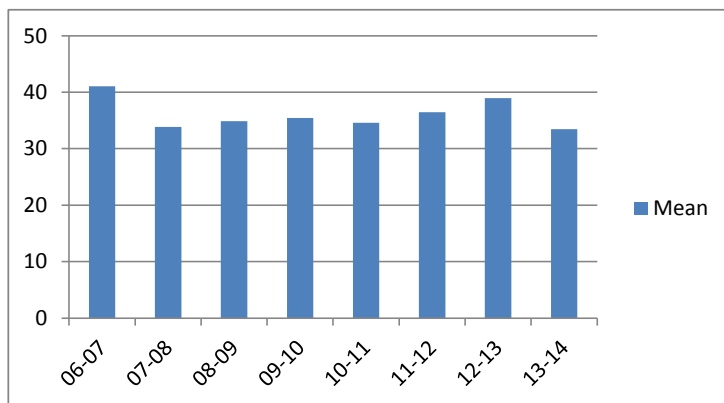
**Incarceration Length - Forgery: Up to \$1,000 - Standard Offenders**

	Mean	Median	Standard Deviation	N
06-07	19.95	24.00	6.58	2,461
07-08	19.86	24.00	6.09	2,246
08-09	19.61	24.00	5.44	2,095
09-10	19.35	24.00	6.11	1,388
10-11	19.51	24.00	6.60	1,091
11-12	18.35	18.00	6.11	855
12-13	19.16	24.00	6.32	825
13-14	19.41	24.00	8.30	434



**Incarceration Length - Forgery: Up to \$1,000 - Multiple Offenders**

	Mean	Median	Standard Deviation	N
06-07	41.05	48.00	9.14	453
07-08	33.82	30.00	10.85	388
08-09	34.87	36.00	10.05	298
09-10	35.44	36.00	10.79	277
10-11	34.56	36.00	10.83	252
11-12	36.47	36.00	10.25	218
12-13	38.97	42.00	9.40	144
13-14	33.46	36.00	9.71	123

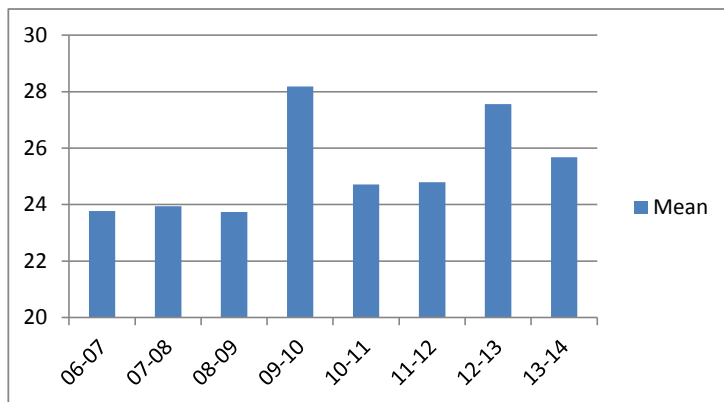


### Average Incarceration Lengths in Months by Felony Class and Offense

Note: N indicates the number of felonies convicted, not the number of individual offenders. Incarceration includes life without parole and death sentences, probation includes sentences to community corrections.

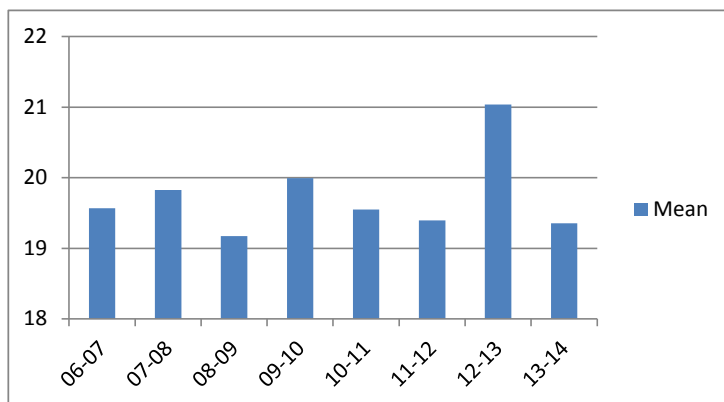
**Incarceration Length - Burglary: Auto - All Offenders**

	Mean	Median	Standard Deviation	N
06-07	23.77	24.00	11.86	1,127
07-08	23.94	24.00	11.45	1,136
08-09	23.74	24.00	12.36	1,082
09-10	28.18	24.00	17.13	1,277
10-11	24.72	24.00	13.60	1,582
11-12	24.79	24.00	12.55	1,281
12-13	27.56	24.00	15.44	761
13-14	25.68	24.00	15.01	712



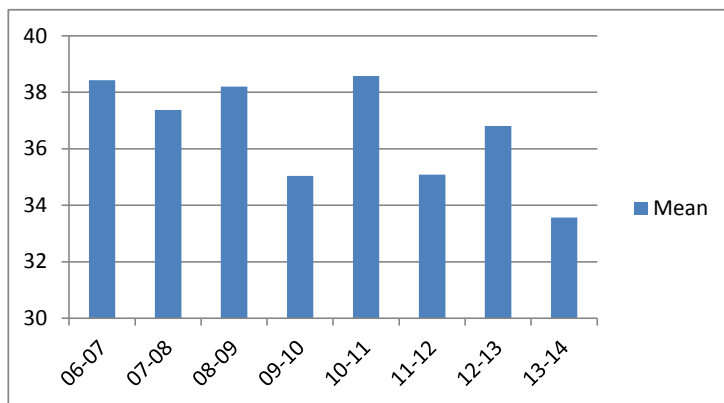
**Incarceration Length - Burglary: Auto - Standard Offenders**

	Mean	Median	Standard Deviation	N
06-07	19.57	24.00	6.22	901
07-08	19.82	24.00	5.86	909
08-09	19.17	24.00	6.15	871
09-10	19.99	24.00	5.87	912
10-11	19.55	24.00	6.45	1,257
11-12	19.39	24.00	5.81	938
12-13	21.04	24.00	7.63	553
13-14	19.36	24.00	6.41	526



**Incarceration Length - Burglary: Auto - Multiple Offenders**

	Mean	Median	Standard Deviation	N
06-07	38.42	48.00	11.91	196
07-08	37.37	36.00	10.54	191
08-09	38.20	36.00	10.42	160
09-10	35.04	36.00	10.57	207
10-11	38.58	36.00	10.42	238
11-12	35.08	36.00	10.82	273
12-13	36.81	36.00	11.98	149
13-14	33.57	36.00	9.56	122



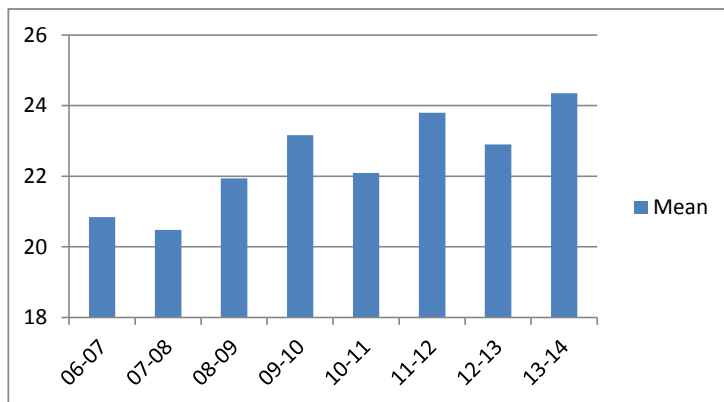


### Average Incarceration Lengths in Months by Felony Class and Offense

Note: N indicates the number of felonies convicted, not the number of individual offenders. Incarceration includes life without parole and death sentences, probation includes sentences to community corrections.

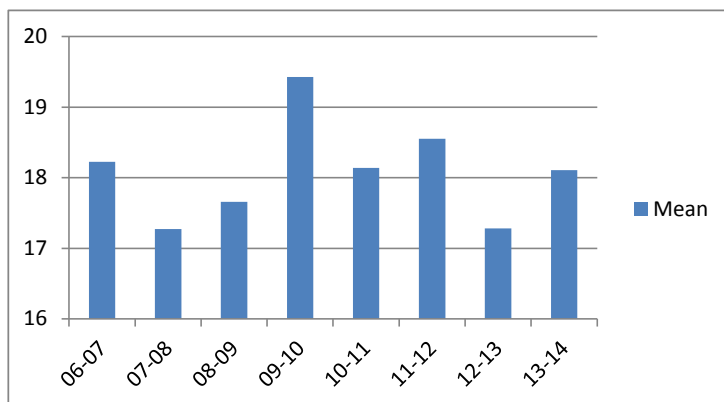
**Incarceration Length - Theft: \$500 - \$1,000 - All Offenders**

	Mean	Median	Standard Deviation	N
06-07	20.84	24.00	10.32	849
07-08	20.48	18.00	11.53	943
08-09	21.94	24.00	12.83	952
09-10	23.16	24.00	12.62	1,026
10-11	22.09	24.00	12.30	1,063
11-12	23.80	24.00	14.12	1,058
12-13	22.90	24.00	14.08	902
13-14	24.35	24.00	14.33	728



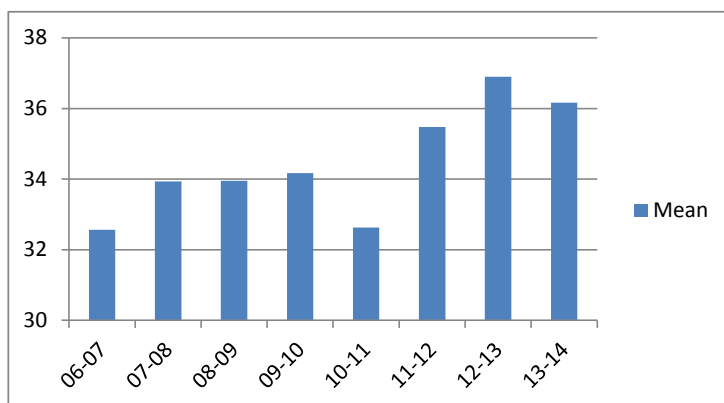
**Incarceration Length - Theft: \$500 - \$1,000 - Standard Offenders**

	Mean	Median	Standard Deviation	N
06-07	18.23	18.00	6.09	730
07-08	17.27	12.00	5.96	805
08-09	17.66	12.00	6.35	775
09-10	19.43	24.00	6.94	847
10-11	18.14	18.00	6.13	861
11-12	18.55	24.00	6.29	836
12-13	17.28	12.00	6.13	709
13-14	18.11	18.00	6.18	541



**Incarceration Length - Theft: \$500 - \$1,000 - Multiple Offenders**

	Mean	Median	Standard Deviation	N
06-07	32.57	24.03	10.13	99
07-08	33.93	27.00	11.51	101
08-09	33.95	36.00	10.46	129
09-10	34.17	36.00	11.33	131
10-11	32.63	24.03	10.04	160
11-12	35.47	36.00	10.68	156
12-13	36.90	36.00	11.74	135
13-14	36.16	36.00	10.23	142

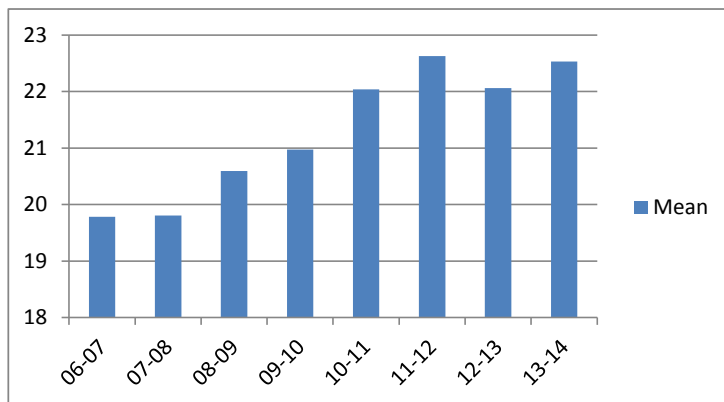


### Average Incarceration Lengths in Months by Felony Class and Offense

Note: N indicates the number of felonies convicted, not the number of individual offenders. Incarceration includes life without parole and death sentences, probation includes sentences to community corrections.

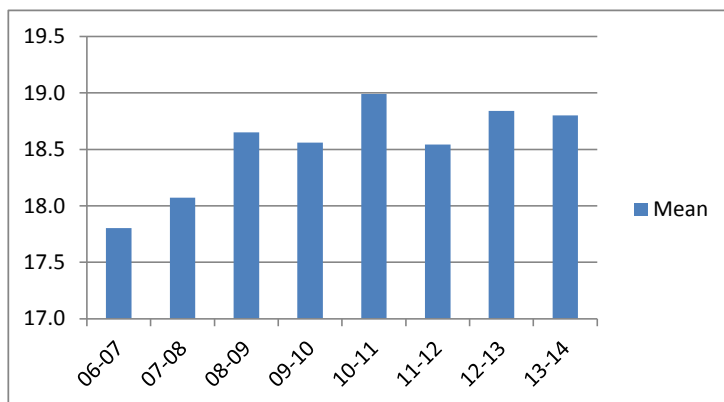
**Incarceration Length - Schedule VI Drugs: Not < 1/2 Ounce - All Offenders**

	Mean	Median	Standard Deviation	N
06-07	19.78	18.00	10.42	589
07-08	19.80	18.00	9.98	651
08-09	20.59	24.00	9.68	596
09-10	20.97	24.00	10.19	651
10-11	22.04	24.00	11.03	678
11-12	22.63	24.00	11.80	657
12-13	22.06	24.00	10.47	534
13-14	22.53	24.00	11.95	459



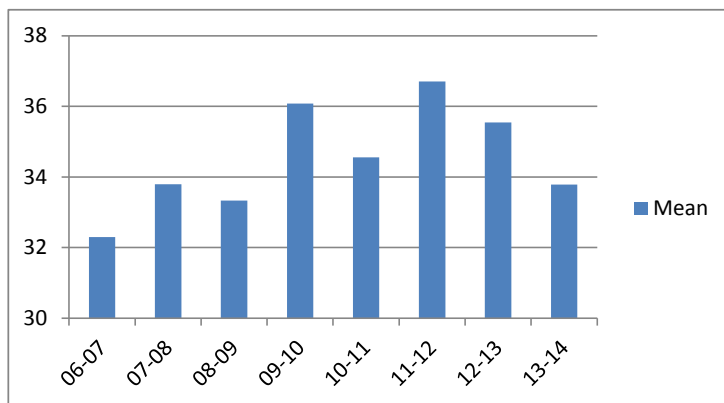
**Incarceration Length - Schedule VI Drugs: Not < 1/2 Ounce - Standard Offenders**

	Mean	Median	Standard Deviation	N
06-07	17.80	15.00	6.01	537
07-08	18.07	15.00	7.62	585
08-09	18.65	18.00	6.50	530
09-10	18.56	18.00	6.68	568
10-11	18.99	24.00	6.22	573
11-12	18.54	24.00	6.12	530
12-13	18.84	24.00	5.93	438
13-14	18.80	24.00	7.01	371



**Incarceration Length - Schedule VI Drugs: Not < 1/2 Ounce - Multiple Offenders**

	Mean	Median	Standard Deviation	N
06-07	32.30	30.00	10.34	34
07-08	33.79	36.00	11.30	57
08-09	33.33	30.00	10.23	58
09-10	36.08	36.00	11.64	73
10-11	34.55	36.00	9.94	87
11-12	36.70	36.00	10.61	107
12-13	35.55	36.00	9.56	77
13-14	33.78	36.00	10.37	73

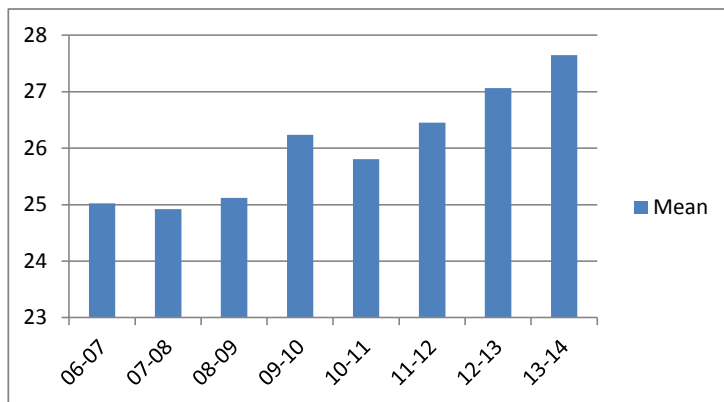


### Average Incarceration Lengths in Months by Felony Class and Offense

Note: N indicates the number of felonies convicted, not the number of individual offenders. Incarceration includes life without parole and death sentences, probation includes sentences to community corrections.

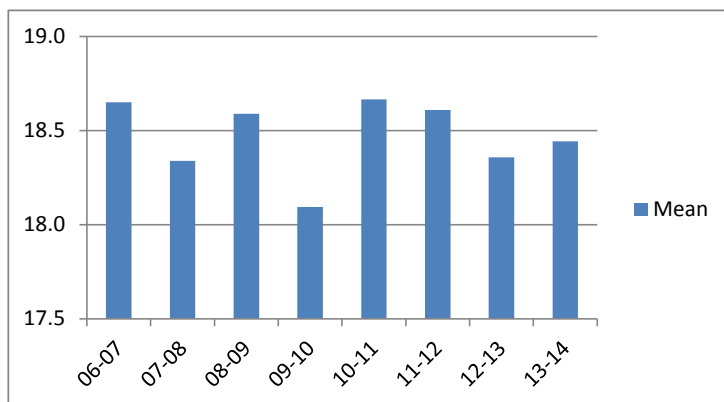
**Incarceration Length - Habitual Traffic Offender - All Offenders**

	Mean	Median	Standard Deviation	N
06-07	25.02	24.00	13.68	596
07-08	24.92	24.00	13.93	565
08-09	25.12	24.00	13.41	546
09-10	26.24	24.00	14.87	440
10-11	25.80	24.00	13.80	465
11-12	26.45	24.00	14.90	393
12-13	27.06	24.00	15.43	379
13-14	27.65	24.00	15.64	321



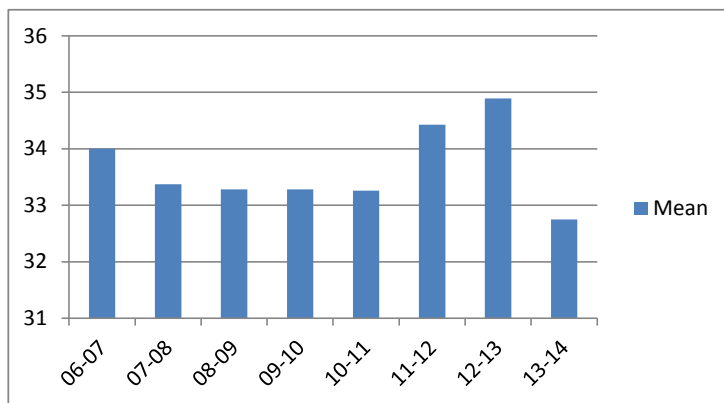
**Incarceration Length - Habitual Traffic Offender - Standard Offenders**

	Mean	Median	Standard Deviation	N
06-07	18.65	18.00	7.03	406
07-08	18.34	18.00	5.72	391
08-09	18.59	18.00	5.80	366
09-10	18.10	18.00	5.78	273
10-11	18.67	18.00	6.01	294
11-12	18.61	18.00	5.80	249
12-13	18.36	18.00	6.04	237
13-14	18.44	18.00	6.44	185



**Incarceration Length - Habitual Traffic Offender - Multiple Offenders**

	Mean	Median	Standard Deviation	N
06-07	34.00	36.00	9.39	154
07-08	33.37	36.00	9.61	129
08-09	33.28	36.00	9.08	146
09-10	33.28	36.00	9.63	131
10-11	33.26	36.00	9.17	140
11-12	34.43	36.00	9.83	113
12-13	34.89	36.00	10.04	107
13-14	32.75	36.00	9.47	94

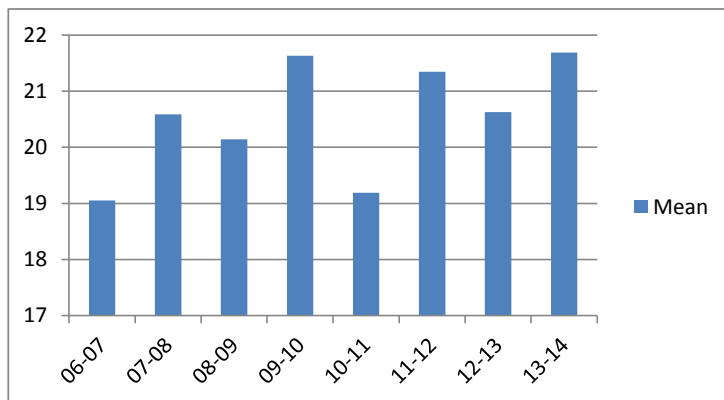


### Average Incarceration Lengths in Months by Felony Class and Offense

Note: N indicates the number of felonies convicted, not the number of individual offenders. Incarceration includes life without parole and death sentences, probation includes sentences to community corrections.

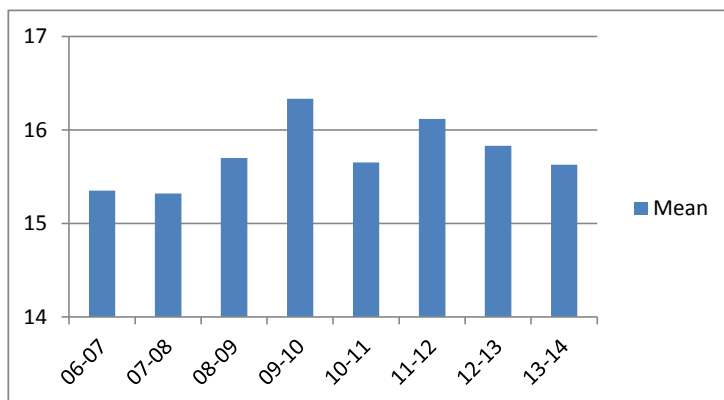
**Incarceration Length - Failure to Appear (Felony) - All Offenders**

	Mean	Median	Standard Deviation	N
06-07	19.05	12.00	10.44	375
07-08	20.59	12.00	12.64	372
08-09	20.14	12.00	13.17	368
09-10	21.63	18.00	13.94	312
10-11	19.19	12.00	10.72	349
11-12	21.35	18.00	12.72	318
12-13	20.63	18.00	12.32	334
13-14	21.69	12.20	13.83	273



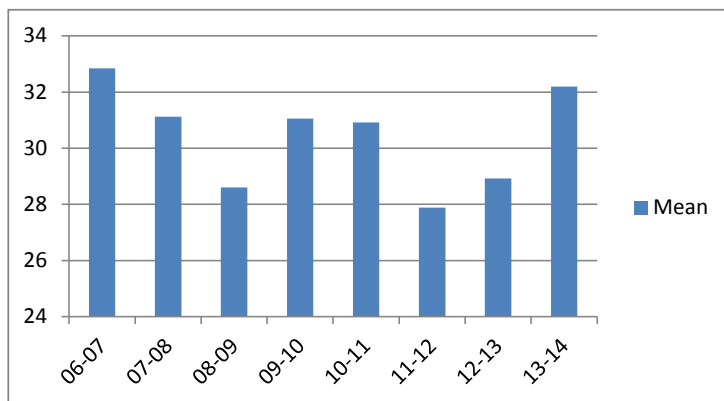
**Incarceration Length - Failure to Appear (Felony) - Standard Offenders**

	Mean	Median	Standard Deviation	N
06-07	15.35	12.00	5.07	301
07-08	15.32	12.00	5.17	281
08-09	15.70	12.00	5.39	299
09-10	16.33	12.00	5.69	242
10-11	15.65	12.00	5.42	283
11-12	16.12	12.00	5.57	230
12-13	15.83	12.00	5.34	250
13-14	15.63	12.00	5.69	201



**Incarceration Length - Failure to Appear (Felony) - Multiple Offenders**

	Mean	Median	Standard Deviation	N
06-07	32.85	24.00	11.30	71
07-08	31.12	24.00	10.43	70
08-09	28.60	24.00	8.78	47
09-10	31.06	24.00	10.51	51
10-11	30.92	24.00	10.02	59
11-12	27.88	24.00	7.38	66
12-13	28.92	24.00	8.52	62
13-14	32.20	24.00	10.72	55



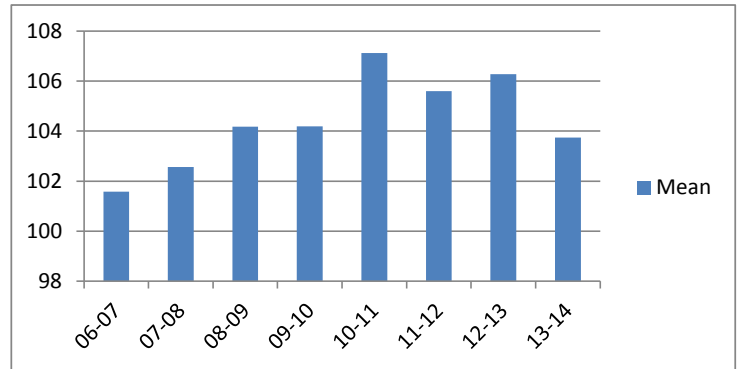
### Average Probation Lengths in Months by Felony Class

Note: N indicates the number of felonies convicted, not the number of individual offenders. Incarceration includes life without parole and death sentences, probation includes sentences to community corrections.

**Probation Length - Felony Class B - All Offenders**

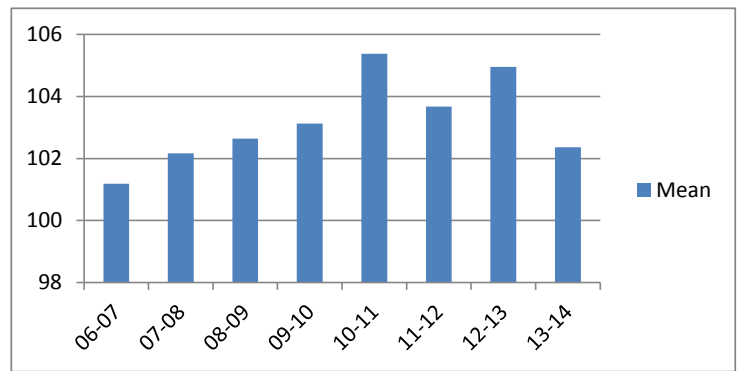
	Mean	Median	Standard Deviation	N
06-07	101.58	96.00	17.28	605
07-08	102.57	96.00	19.05	610
08-09	104.18	96.00	21.62	591
09-10	104.19	96.00	20.65	608
10-11	107.12	96.00	21.97	718
11-12	105.60	96.00	21.72	666
12-13	106.28	96.00	21.91	802
13-14	103.74	96.00	19.77	663

The table for multiple offenders was not included due to low occurrence frequencies.



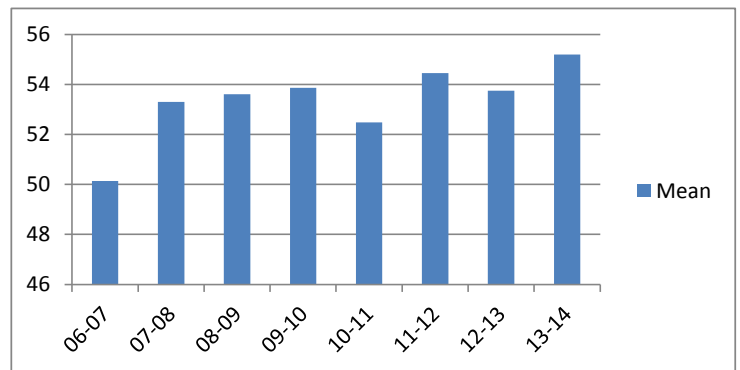
**Probation Length - Felony Class B - Standard Offenders**

	Mean	Median	Standard Deviation	N
06-07	101.19	96.00	16.79	597
07-08	102.17	96.00	18.54	598
08-09	102.64	96.00	20.00	563
09-10	103.13	96.00	18.94	594
10-11	105.38	96.00	19.94	678
11-12	103.67	96.00	18.34	621
12-13	104.95	96.00	19.48	764
13-14	102.36	96.00	16.70	638



**Probation Length - Class C - All Offenders**

	Mean	Median	Standard Deviation	N
06-07	50.13	48.00	21.03	2,289
07-08	53.30	48.00	27.57	2,305
08-09	53.61	48.00	23.49	2,154
09-10	53.87	48.00	22.99	2,188
10-11	52.48	48.00	19.92	2,659
11-12	54.45	48.00	20.92	2,959
12-13	53.75	48.00	20.94	3,322
13-14	55.20	48.00	22.55	3,285

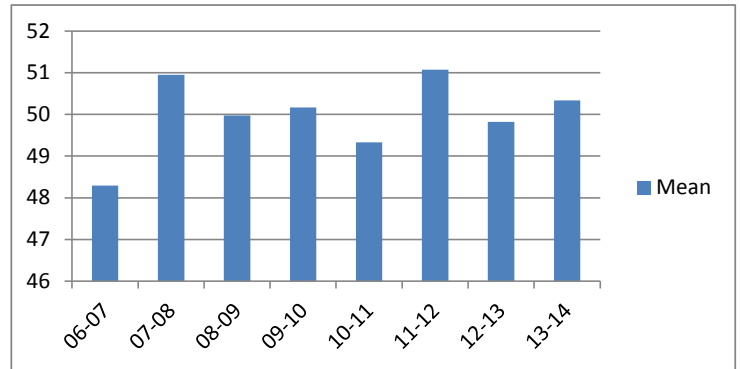


### Average Probation Lengths in Months by Felony Class

Note: N indicates the number of felonies convicted, not the number of individual offenders. Incarceration includes life without parole and death sentences, probation includes sentences to community corrections.

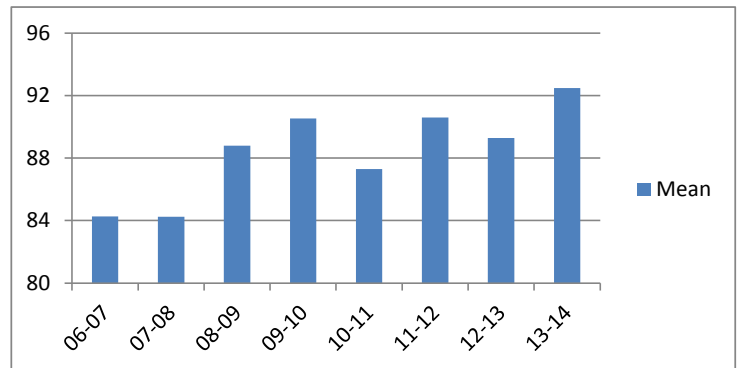
**Probation Length - Class C - Standard Offenders**

	Mean	Median	Standard Deviation	N
06-07	48.29	36.00	18.95	2,183
07-08	50.95	48.00	25.93	2,155
08-09	49.98	48.00	19.72	1,964
09-10	50.17	48.00	18.67	1,998
10-11	49.33	48.00	16.30	2,446
11-12	51.08	48.00	16.75	2,716
12-13	49.82	48.00	16.12	2,993
13-14	50.34	48.00	16.60	2,937



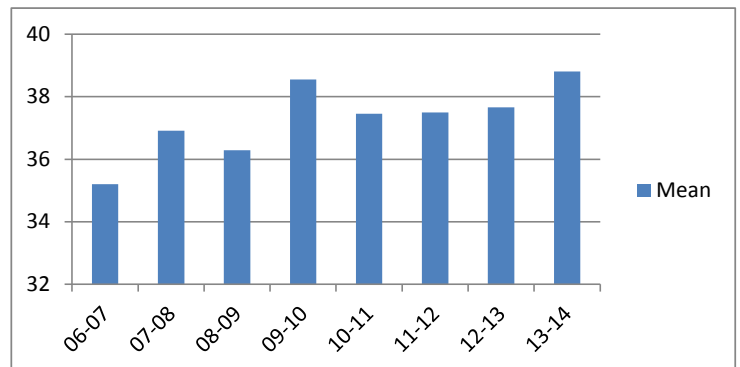
**Probation Length - Class C - Multiple Offenders**

	Mean	Median	Standard Deviation	N
06-07	84.25	84.00	14.62	78
07-08	84.24	84.00	19.71	124
08-09	88.79	84.00	23.81	165
09-10	90.53	84.00	25.09	166
10-11	87.29	84.00	21.01	199
11-12	90.60	96.00	22.22	217
12-13	89.29	84.00	21.93	292
13-14	92.49	96.00	21.11	300



**Probation Length - Class D - All Offenders**

	Mean	Median	Standard Deviation	N
06-07	35.21	24.03	17.61	2,932
07-08	36.91	36.00	20.97	3,024
08-09	36.29	36.00	17.39	3,140
09-10	38.55	36.00	21.08	3,491
10-11	37.46	36.00	17.30	3,707
11-12	37.50	36.00	16.63	4,200
12-13	37.67	36.00	17.91	4,695
13-14	38.81	36.00	19.26	4,729

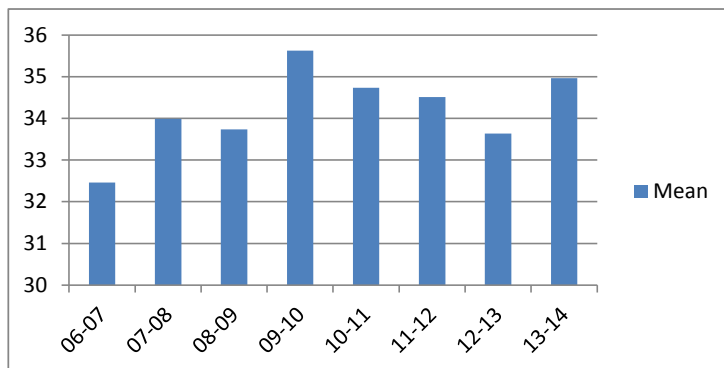


### Average Probation Lengths in Months by Felony Class

Note: N indicates the number of felonies convicted, not the number of individual offenders. Incarceration includes life without parole and death sentences, probation includes sentences to community corrections.

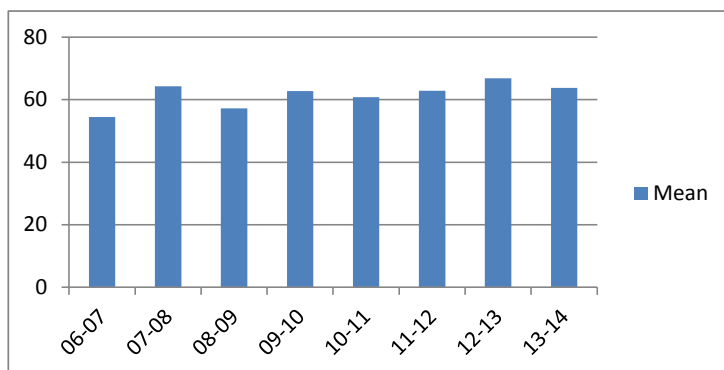
**Probation Length - Class D - Standard Offenders**

	Mean	Median	Standard Deviation	N
06-07	32.46	24.00	12.79	2,691
07-08	33.99	24.05	14.70	2,834
08-09	33.74	25.00	13.59	2,902
09-10	35.63	36.00	16.98	3,235
10-11	34.74	36.00	13.79	3,396
11-12	34.51	36.00	11.88	3,835
12-13	33.63	36.00	11.65	4,194
13-14	34.96	36.00	14.15	4,221



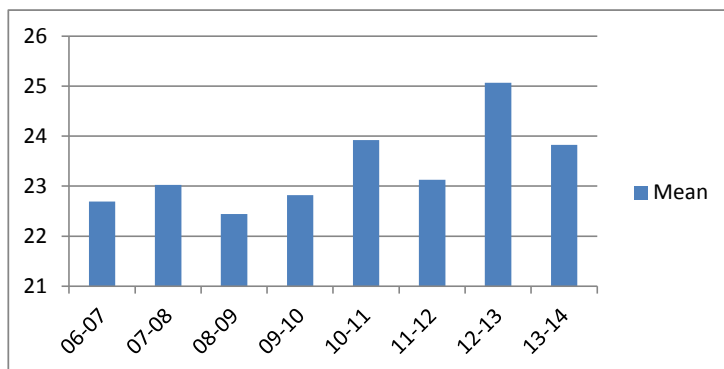
**Probation Length - Class D - Multiple Offenders**

	Mean	Median	Standard Deviation	N
06-07	54.48	48.00	19.66	188
07-08	64.31	72.00	22.33	138
08-09	57.22	48.00	18.97	179
09-10	62.76	60.00	19.58	188
10-11	60.80	60.00	16.48	260
11-12	62.87	60.00	20.08	299
12-13	66.83	60.00	19.55	429
13-14	63.78	60.00	18.23	422



**Probation Length - Class E - All Offenders**

	Mean	Median	Standard Deviation	N
06-07	22.69	24.00	13.59	4,430
07-08	23.03	24.00	13.83	4,249
08-09	22.44	24.00	12.64	4,073
09-10	22.82	24.00	12.08	4,217
10-11	23.92	24.00	15.07	4,092
11-12	23.13	24.00	12.37	4,200
12-13	25.07	24.00	14.69	4,943
13-14	23.82	24.00	12.26	5,140

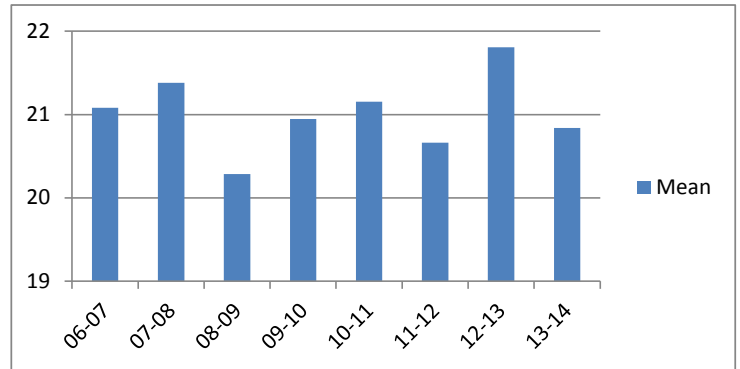


### Average Probation Lengths in Months by Felony Class

Note: N indicates the number of felonies convicted, not the number of individual offenders. Incarceration includes life without parole and death sentences, probation includes sentences to community corrections.

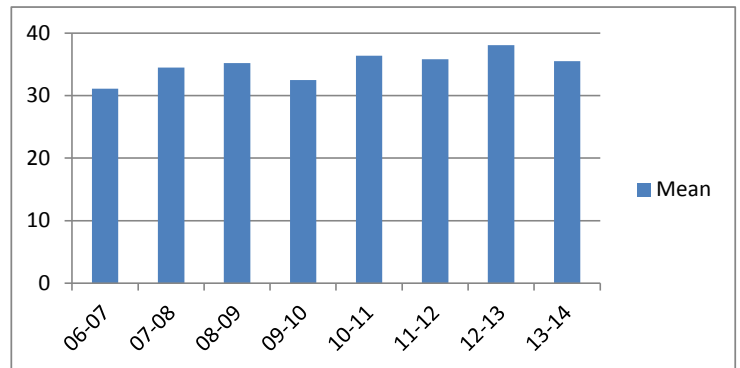
**Probation Length - Class E - Standard Offenders**

	Mean	Median	Standard Deviation	N
06-07	21.08	24.00	11.49	4,093
07-08	21.38	24.00	11.92	3,891
08-09	20.29	24.00	9.82	3,657
09-10	20.95	24.00	9.85	3,780
10-11	21.16	24.00	12.65	3,556
11-12	20.66	24.00	9.16	3,706
12-13	21.81	24.00	11.73	4,213
13-14	20.84	24.00	8.59	4,379



**Probation Length - Class E - Multiple Offenders**

	Mean	Median	Standard Deviation	N
06-07	31.12	24.00	9.87	276
07-08	34.47	36.00	10.74	276
08-09	35.19	36.00	10.09	326
09-10	32.51	24.00	9.87	341
10-11	36.40	36.00	10.73	439
11-12	35.81	36.00	10.61	394
12-13	38.07	36.00	10.74	558
13-14	35.49	36.00	10.89	595





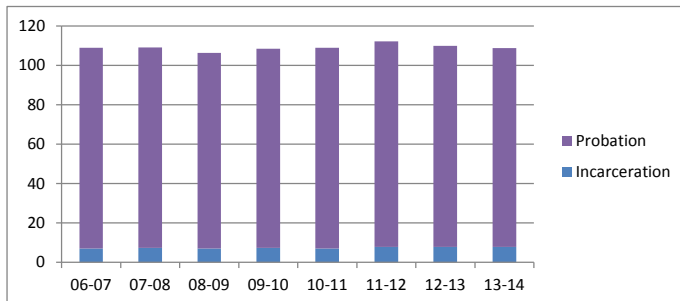
### Average Split Sentence Lengths in Months by Felony Class

Note: N indicates the number of felonies convicted, not the number of individual offenders. Incarceration includes life without parole and death sentences, probation includes sentences to community corrections.

**Sentence Length - Felony Class B - All Offenders**

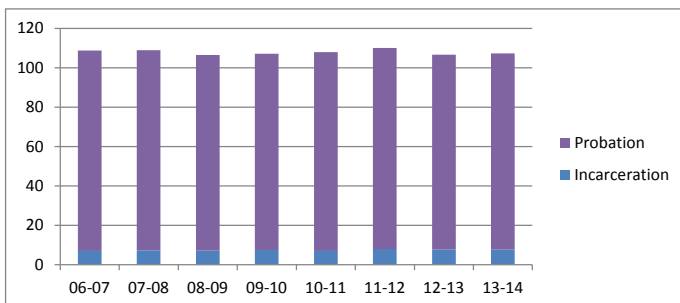
	Incarceration			Probation			N
	Mean	Median	Standard Deviation	Mean	Median	Standard Deviation	
06-07	7.1	6.0	4.6	102.0	96.0	28.7	504
07-08	7.4	6.0	4.3	101.8	96.0	22.5	473
08-09	7.0	6.0	4.4	99.4	96.0	16.2	384
09-10	7.4	6.0	4.3	101.1	96.0	20.2	431
10-11	7.0	6.0	4.3	101.9	96.0	20.0	588
11-12	7.9	9.0	4.2	104.4	96.0	23.5	518
12-13	8.0	8.0	4.7	102.0	96.0	22.7	539
13-14	7.8	7.1	4.1	101.0	96.0	18.5	406

The table for multiple offenders was not included due to low occurrence frequencies.



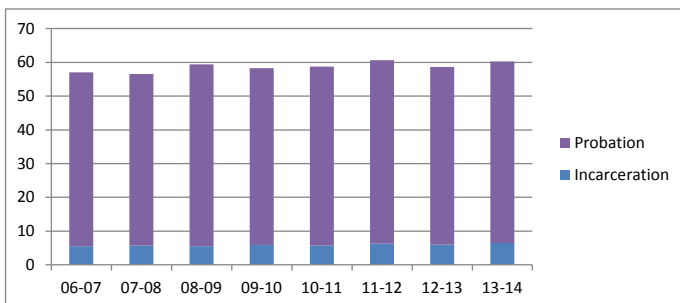
**Sentence Length - Felony Class B - Standard Offenders**

	Incarceration			Probation			N
	Mean	Median	Standard Deviation	Mean	Median	Standard Deviation	
06-07	6.9	6.0	4.3	101.9	96.0	28.6	494
07-08	7.3	6.0	4.3	101.6	96.0	22.4	464
08-09	7.1	6.0	4.4	99.4	96.0	16.1	379
09-10	7.5	6.0	4.3	99.6	96.0	17.7	418
10-11	7.0	6.0	4.4	101.0	96.0	19.2	572
11-12	7.9	9.0	4.2	102.2	96.0	20.7	490
12-13	7.8	7.0	4.7	98.9	96.0	15.6	508
13-14	7.7	6.8	4.1	99.6	96.0	16.0	394



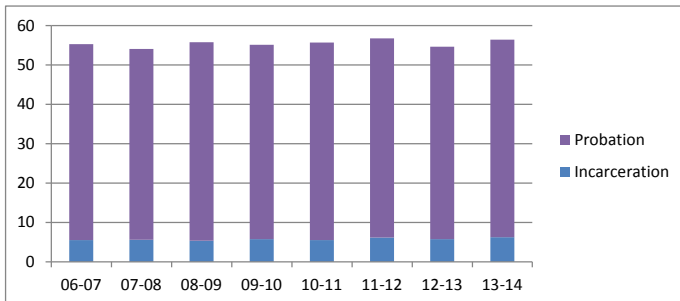
**Sentence Length - Class C - All Offenders**

	Incarceration			Probation			N
	Mean	Median	Standard Deviation	Mean	Median	Standard Deviation	
06-07	5.6	4.0	4.0	51.5	48.0	22.3	1,227
07-08	5.7	4.9	4.2	50.8	48.0	22.0	1,211
08-09	5.5	4.0	4.2	53.9	48.0	23.2	1,243
09-10	5.9	5.1	4.3	52.4	48.0	21.2	1,374
10-11	5.7	4.9	4.3	53.0	48.0	22.6	1,580
11-12	6.3	5.9	4.2	54.3	48.0	21.4	1,792
12-13	6.0	5.0	4.1	52.6	48.0	21.0	1,713
13-14	6.5	6.0	4.5	53.8	48.0	21.1	1,673



**Sentence Length - Class C - Standard Offenders**

	Incarceration			Probation			N
	Mean	Median	Standard Deviation	Mean	Median	Standard Deviation	
06-07	5.5	4.0	4.0	49.8	48.0	20.2	1,170
07-08	5.6	4.0	4.2	48.5	47.0	19.9	1,136
08-09	5.4	3.9	4.1	50.4	48.0	19.5	1,136
09-10	5.8	5.0	4.3	49.3	48.0	17.6	1,272
10-11	5.5	4.0	4.2	50.2	48.0	19.6	1,462
11-12	6.1	5.9	4.1	50.6	48.0	17.2	1,641
12-13	5.8	4.7	4.0	48.8	48.0	16.6	1,558
13-14	6.2	5.9	4.5	50.2	48.0	17.7	1,510

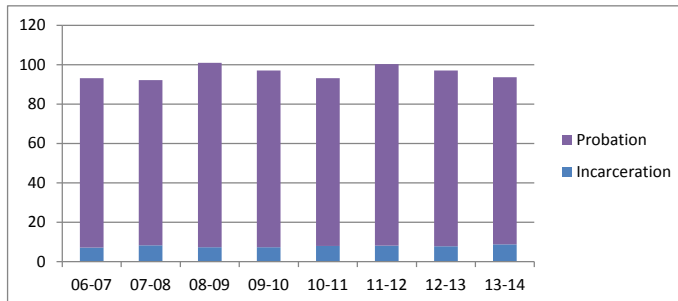


### Average Split Sentence Lengths in Months by Felony Class

Note: N indicates the number of felonies convicted, not the number of individual offenders. Incarceration includes life without parole and death sentences, probation includes sentences to community corrections.

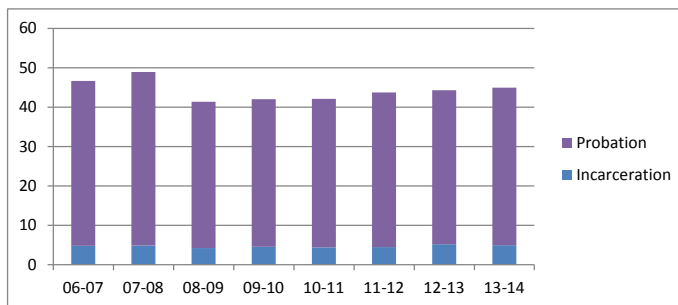
**Sentence Length - Class C - Multiple Offenders**

	Incarceration			Probation			N
	Mean	Median	Standard Deviation	Mean	Median	Standard Deviation	
06-07	7.1	6.5	4.2	86.1	72.0	29.1	52
07-08	8.2	11.3	4.4	83.8	84.0	19.2	64
08-09	7.2	6.0	5.1	93.7	96.0	23.6	100
09-10	7.3	7.9	4.6	89.7	88.9	22.5	94
10-11	7.9	9.0	4.3	85.2	84.0	21.1	101
11-12	8.1	9.0	4.0	92.1	96.0	19.5	136
12-13	7.7	8.0	4.6	89.3	90.0	21.0	140
13-14	8.7	12.0	3.9	85.0	84.0	20.3	152



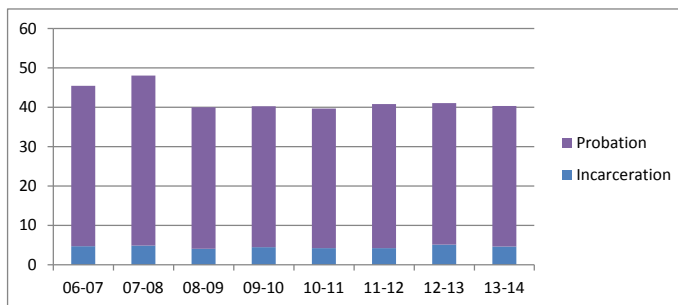
**Sentence Length - Class D - All Offenders**

	Incarceration			Probation			N
	Mean	Median	Standard Deviation	Mean	Median	Standard Deviation	
06-07	4.8	3.9	3.8	41.9	36.0	28.7	1,227
07-08	4.9	3.3	4.1	44.0	36.0	33.0	1,458
08-09	4.2	3.0	3.5	37.2	36.0	19.0	1,443
09-10	4.6	3.4	3.7	37.5	36.0	17.5	1,606
10-11	4.4	3.0	3.6	37.7	36.0	18.0	1,807
11-12	4.4	3.0	3.6	39.3	36.0	18.2	1,862
12-13	5.2	3.9	17.0	39.1	36.0	20.7	1,869
13-14	5.0	3.9	3.8	39.9	36.0	19.8	1,676



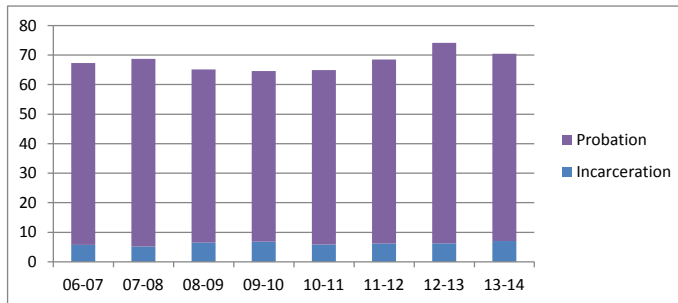
**Sentence Length - Class D - Standard Offenders**

	Incarceration			Probation			N
	Mean	Median	Standard Deviation	Mean	Median	Standard Deviation	
06-07	4.7	3.8	3.7	40.8	36.0	28.5	1,167
07-08	4.9	3.3	4.1	43.2	36.0	33.0	1,403
08-09	4.1	3.0	3.5	35.9	36.0	17.5	1,388
09-10	4.5	3.3	3.7	35.8	36.0	15.1	1,520
10-11	4.3	3.0	3.6	35.4	36.0	14.9	1,680
11-12	4.2	3.0	3.5	36.6	36.0	15.0	1,704
12-13	5.1	3.3	17.6	36.0	36.0	17.1	1,721
13-14	4.7	3.6	3.6	35.7	36.0	14.4	1,470



**Sentence Length - Class D - Multiple Offenders**

	Incarceration			Probation			N
	Mean	Median	Standard Deviation	Mean	Median	Standard Deviation	
06-07	5.8	4.0	4.7	61.6	60.0	21.1	56
07-08	5.1	4.0	4.1	63.6	60.0	22.5	49
08-09	6.5	6.0	4.1	58.6	48.0	20.1	43
09-10	6.8	6.0	4.2	57.8	55.3	18.2	71
10-11	5.8	5.9	3.7	59.1	56.2	17.8	105
11-12	6.2	6.0	4.1	62.3	60.0	17.1	137
12-13	6.3	5.7	4.2	67.8	67.6	19.4	118
13-14	7.0	6.0	4.0	63.4	60.0	18.9	170

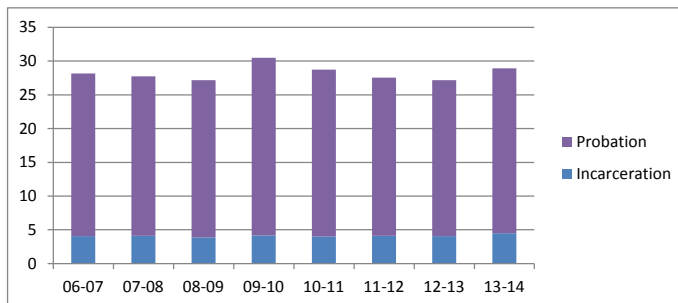


### Average Split Sentence Lengths in Months by Felony Class

Note: N indicates the number of felonies convicted, not the number of individual offenders. Incarceration includes life without parole and death sentences, probation includes sentences to community corrections.

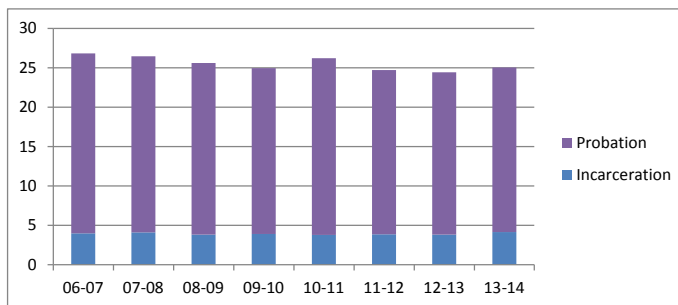
**Sentence Length - Class E - All Offenders**

	Incarceration			Probation			N
	Mean	Median	Standard Deviation	Mean	Median	Standard Deviation	
06-07	4.1	3.0	3.2	24.1	24.0	17.4	2,051
07-08	4.1	3.0	3.3	23.6	23.0	16.9	2,023
08-09	3.9	3.0	2.9	23.3	23.2	13.4	2,222
09-10	4.2	3.3	3.2	26.3	23.0	22.4	1,918
10-11	4.0	3.0	3.0	24.7	24.0	14.8	2,061
11-12	4.1	3.0	3.1	23.4	22.8	18.3	1,950
12-13	4.1	3.0	3.0	23.1	22.5	14.8	1,927
13-14	4.5	3.9	3.2	24.5	23.9	15.9	1,720



**Sentence Length - Class E - Standard Offenders**

	Incarceration			Probation			N
	Mean	Median	Standard Deviation	Mean	Median	Standard Deviation	
06-07	4.0	3.0	3.1	22.9	23.0	17.2	1,868
07-08	4.1	3.0	3.3	22.4	22.0	16.3	1,874
08-09	3.8	3.0	2.8	21.8	22.6	11.9	2,028
09-10	3.9	3.0	3.1	21.1	21.0	12.9	1,660
10-11	3.8	3.0	2.9	22.5	23.0	13.4	1,781
11-12	3.9	3.0	2.9	20.9	21.0	17.1	1,690
12-13	3.8	3.0	2.9	20.6	21.0	11.0	1,705
13-14	4.1	3.0	3.0	20.9	21.0	13.3	1,429



**Sentence Length - Class E - Multiple Offenders**

	Incarceration			Probation			N
	Mean	Median	Standard Deviation	Mean	Median	Standard Deviation	
06-07	4.8	4.9	3.1	33.2	33.0	12.6	155
07-08	4.9	4.0	3.5	35.4	36.0	14.6	118
08-09	4.5	3.9	3.1	34.9	36.0	14.5	156
09-10	5.5	6.0	3.1	61.3	48.0	39.6	212
10-11	5.3	4.9	3.6	34.9	36.0	10.6	232
11-12	5.2	4.0	4.0	35.5	36.0	14.5	204
12-13	5.8	5.0	3.6	34.8	36.0	11.4	161
13-14	5.6	5.0	3.4	35.4	36.0	10.4	219

