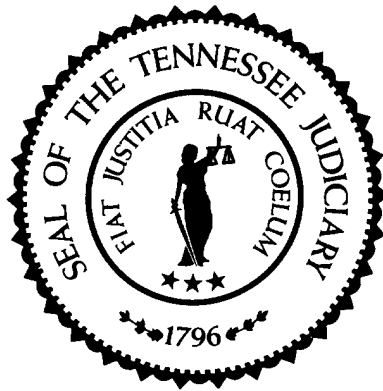


Sentencing Practices in Tennessee



Administrative Office of the Courts

Information for Cases Sentenced Between
January 1, 2008 and December 31, 2015

TDOC Data Extracted: April 2016
Released: June 2016

Sentencing Practices in Tennessee Contents

Sentence Type Information	
Class A	1
Class B	1
Class C	2
Class D	2
Class E	2
Average Incarceration Lengths in Months	
Class A	3
Rape of Child	4
Second Degree Murder	4
Especially Aggravated Kidnapping	5
Class B	6
Schedule II Cocaine	7
Aggravated Robbery	8
Aggravated Sexual Battery	9
Class C	9
Aggravated Burglary	10
Aggravated Assault	11
Schedule II Cocaine < ½ Gram	12
Schedule II Drugs: Max \$100,000 Fine	13
Class D	14
Theft: \$1,000 to \$10,000	15
Burglary Other Than Habitation	16
Identity Theft	17
Obtain Drugs by Fraud	18
Class E	19
Forgery: Up to \$1,000	20
Burglary: Auto	21
Theft: \$500 to \$1,000	22
Schedule VI Drugs: Not < ½ Ounce	23
Habitual Traffic Offender	24
Failure to Appear (Felony)	25
Average Probation Lengths in Months	
Class B	27
Class C	27
Class D	28
Class E	29
Average Split Sentence Lengths in Months	
Class B	31
Class C	31
Class D	32
Class E	33

Note:

The numbers presented here and in previous reports may vary for the same years. Discrepancies are due in part to late reporting to the Tennessee Department of Corrections and parole violations over time. Also, due to late reporting to TDOC, the total population in recent years may not be included in the analysis at the time of publication.

Sentence Type Information

Note: Column N indicates the number of felony convictions. Individual offenders can have multiple convictions. Incarceration includes life without parole and death sentences. Probation includes sentences to community corrections.

Percent of Sentence Type - All Felony Classes - All Offenders

Year	Incarceration	Probation	Split Sentence	N
	Percent	Percent	Percent	
2008	63.1%	24.2%	12.7%	40,666
2009	63.4%	23.8%	12.8%	40,850
2010	62.8%	24.5%	12.7%	42,989
2011	62.2%	24.4%	13.4%	43,760
2012	58.3%	28.0%	13.8%	41,351
2013	55.0%	30.4%	14.6%	39,594
2014	50.0%	34.1%	15.9%	35,555
2015	44.9%	38.1%	17.0%	31,951



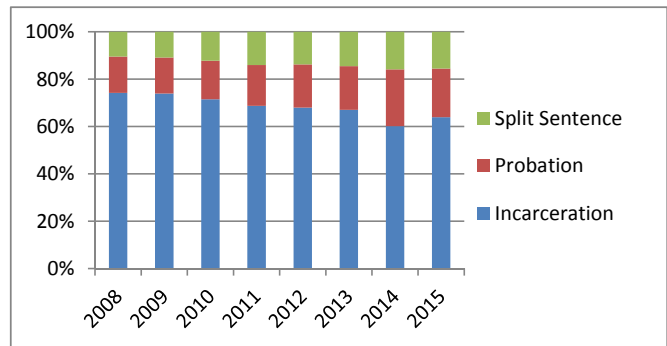
Percent of Sentence Type - Felony Class A - All Offenders

Year	Incarceration	Probation	Split Sentence	N
	Percent	Percent	Percent	
2008	99.4%	0.6%	0.0%	517
2009	99.5%	0.3%	0.3%	770
2010	99.6%	0.0%	0.4%	562
2011	99.2%	0.3%	0.5%	614
2012	99.0%	0.8%	0.2%	607
2013	98.8%	0.8%	0.3%	608
2014	99.8%	0.2%	0.0%	480
2015	97.8%	0.8%	1.4%	591



Percent of Sentence Type - Felony Class B - All Offenders

Year	Incarceration	Probation	Split Sentence	N
	Percent	Percent	Percent	
2008	74.2%	15.3%	10.5%	3,781
2009	73.9%	15.2%	10.9%	3,783
2010	71.5%	16.3%	12.2%	3,791
2011	68.7%	17.2%	14.0%	3,818
2012	68.0%	18.2%	13.8%	3,663
2013	67.0%	18.5%	14.5%	3,355
2014	60.2%	23.9%	15.9%	2,929
2015	63.9%	20.5%	15.5%	2,990

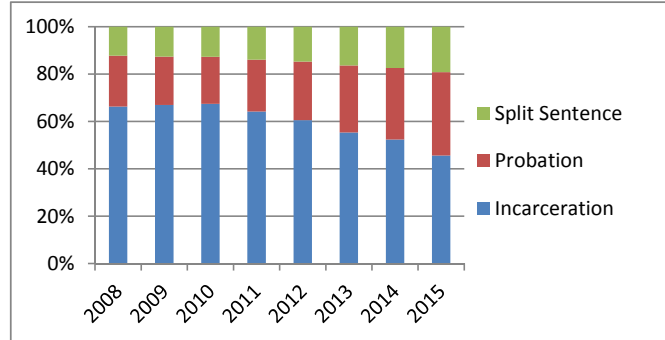


Sentence Type Information

Note: Column N indicates the number of felony convictions. Individual offenders can have multiple convictions. Incarceration includes life without parole and death sentences. Probation includes sentences to community corrections.

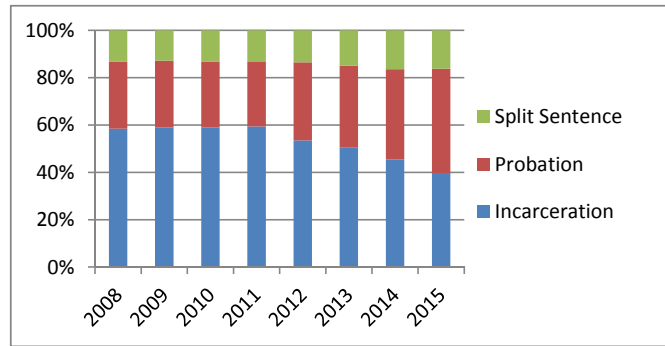
Percent of Sentence Type - Felony Class C - All Offenders

Year	Incarceration	Probation	Split Sentence	N
	Percent	Percent	Percent	
2008	66.3%	21.4%	12.3%	10,243
2009	67.0%	20.4%	12.6%	10,103
2010	67.4%	19.9%	12.7%	11,410
2011	64.2%	21.9%	14.0%	11,623
2012	60.5%	24.8%	14.7%	11,104
2013	55.3%	28.3%	16.3%	10,141
2014	52.4%	30.1%	17.5%	9,337
2015	45.6%	35.3%	19.2%	8,731



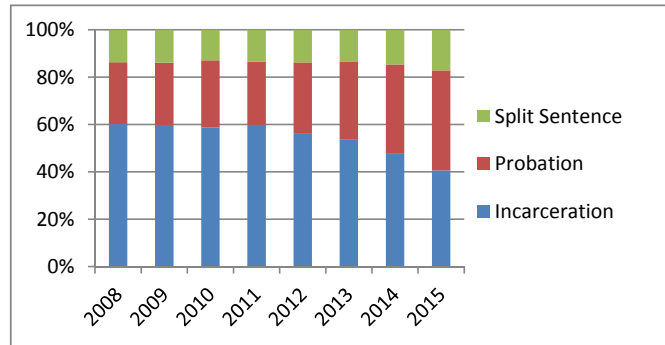
Percent of Sentence Type - Felony Class D - All Offenders

Year	Incarceration	Probation	Split Sentence	N
	Percent	Percent	Percent	
2008	58.4%	28.4%	13.2%	10,557
2009	59.0%	28.2%	12.9%	11,193
2010	59.0%	27.8%	13.2%	12,500
2011	59.4%	27.5%	13.1%	13,239
2012	53.5%	32.9%	13.6%	12,473
2013	50.6%	34.5%	14.9%	11,979
2014	45.5%	38.1%	16.4%	10,984
2015	39.7%	44.1%	16.2%	9,231



Percent of Sentence Type - Felony Class E - All Offenders

Year	Incarceration	Probation	Split Sentence	N
	Percent	Percent	Percent	
2008	60.1%	26.1%	13.7%	15,568
2009	59.8%	26.3%	13.9%	15,001
2010	58.8%	28.3%	12.9%	14,726
2011	59.9%	26.6%	13.5%	14,466
2012	56.4%	29.8%	13.8%	13,504
2013	53.8%	32.7%	13.5%	13,511
2014	47.9%	37.4%	14.7%	11,825
2015	40.6%	42.2%	17.2%	10,408

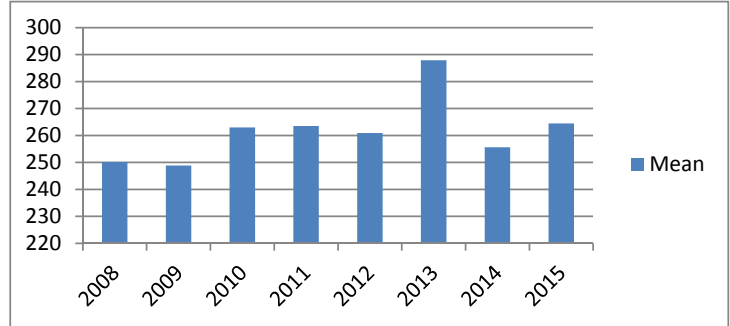


Average Incarceration Lengths in Months by Felony Class and Offense

Note: Column N indicates the number of felony convictions. Individual offenders can have multiple convictions. Incarceration includes life without parole and death sentences. Probation includes sentences to community corrections.

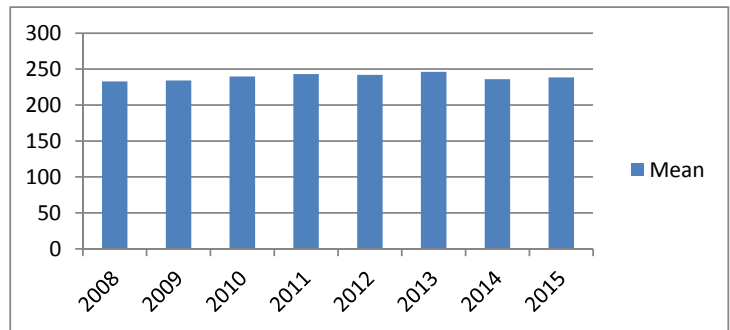
Average Incarceration Length - Class A - All Offenders

Year	Mean	Median	Standard Deviation	N
2008	250.16	240.00	89.31	509
2009	248.84	240.00	79.46	764
2010	262.96	240.00	94.98	558
2011	263.53	240.00	90.85	607
2012	260.89	240.00	89.38	599
2013	287.92	300.00	116.28	598
2014	255.63	240.00	90.41	478
2015	264.45	240.00	95.90	578



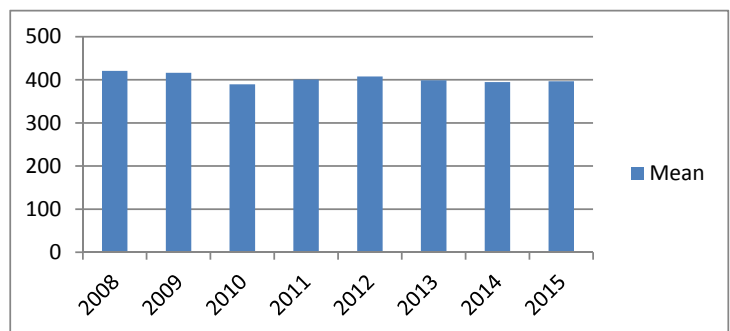
Average Incarceration Length - Class A - Standard Offenders

Year	Mean	Median	Standard Deviation	N
2008	232.74	240.00	52.03	430
2009	234.11	240.00	46.27	649
2010	239.64	240.00	51.41	444
2011	243.12	240.00	47.46	500
2012	241.91	240.00	46.30	483
2013	246.23	240.00	51.72	444
2014	235.90	240.00	54.82	367
2015	238.37	240.00	49.69	456



Average Incarceration Length - Class A - Multiple Offenders

Year	Mean	Median	Standard Deviation	N
2008	420.53	420.00	62.72	45
2009	416.31	420.00	56.36	65
2010	389.56	396.00	70.56	68
2011	400.52	384.00	66.39	61
2012	407.79	396.00	54.02	57
2013	398.83	408.00	75.94	106
2014	394.55	384.00	81.57	66
2015	396.42	390.00	88.18	85



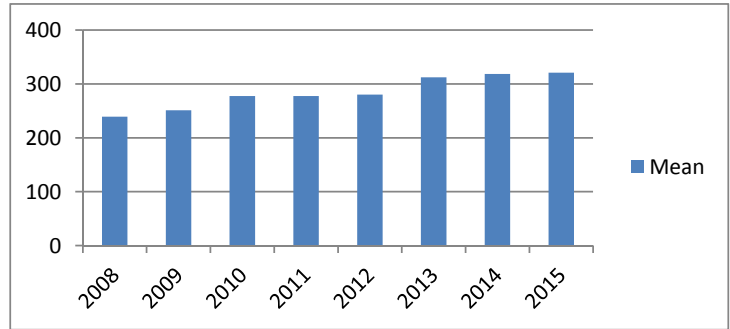
Average Incarceration Lengths in Months by Felony Class and Offense

Note: Column N indicates the number of felony convictions. Individual offenders can have multiple convictions. Incarceration includes life without parole and death sentences. Probation includes sentences to community corrections.

Average Incarceration Length - Rape of a Child - All Offenders

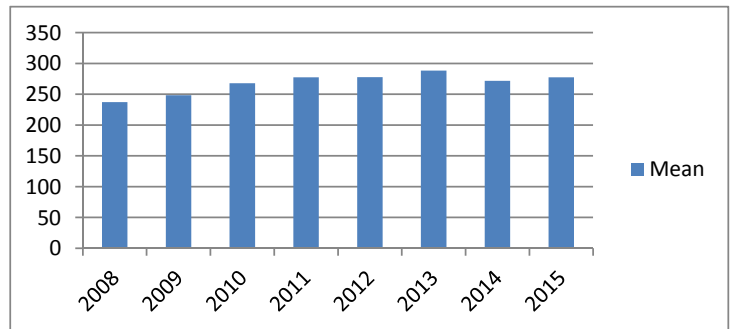
Year	Mean	Median	Standard Deviation	N
2008	239.32	240.00	49.78	114
2009	251.15	240.00	40.79	213
2010	277.60	300.00	51.43	94
2011	277.36	300.00	43.80	106
2012	280.25	300.00	47.77	79
2013	312.21	300.00	53.93	114
2014	318.48	300.00	81.68	88
2015	320.79	300.00	94.69	84

The table for multiple offenders was not included due to low occurrence frequencies.



Average Incarceration Length - Rape of a Child - Standard Offenders

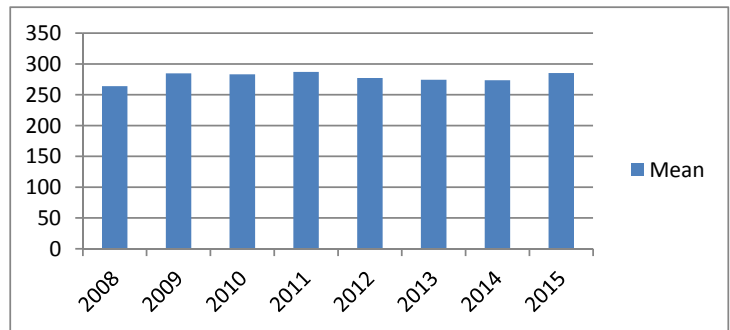
Year	Mean	Median	Standard Deviation	N
2008	237.16	240.00	47.50	112
2009	248.50	240.00	35.59	209
2010	267.84	300.00	41.02	86
2011	277.50	300.00	33.14	104
2012	277.69	300.00	42.27	78
2013	288.42	300.00	32.12	86
2014	271.70	300.00	49.37	53
2015	277.57	300.00	38.35	61



Average Incarceration Length - Second Degree Murder - All Offenders

Year	Mean	Median	Standard Deviation	N
2008	264.00	240.00	90.71	92
2009	284.71	246.00	99.45	124
2010	283.19	252.00	97.92	126
2011	287.11	276.00	90.24	101
2012	277.14	240.00	96.37	111
2013	274.44	240.00	94.30	81
2014	273.57	276.00	81.93	79
2015	285.15	264.00	95.97	123

The table for multiple offenders was not included due to low occurrence frequencies.



Average Incarceration Lengths in Months by Felony Class and Offense

Note: Column N indicates the number of felony convictions. Individual offenders can have multiple convictions. Incarceration includes life without parole and death sentences. Probation includes sentences to community corrections.

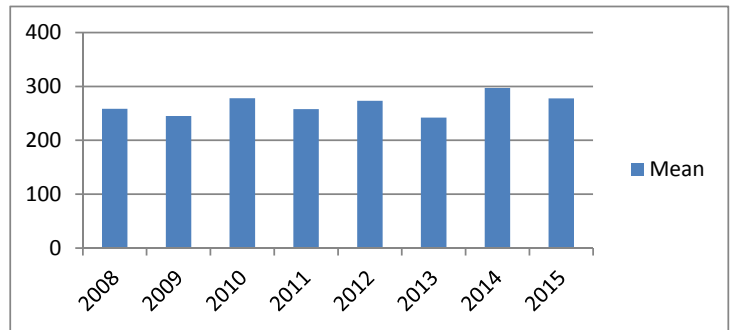
Average Incarceration Length - Second Degree Murder - Standard Offenders

Year	Mean	Median	Standard Deviation	N
2008	237.38	240.00	50.65	78
2009	243.37	240.00	42.00	89
2010	244.02	240.00	43.06	88
2011	245.19	240.00	45.14	67
2012	237.62	240.00	45.17	78
2013	229.76	228.00	47.42	58
2014	253.64	240.00	46.11	66
2015	243.99	240.00	42.16	79



Average Incarceration Length - Especially Aggravated Kidnapping - All Offenders

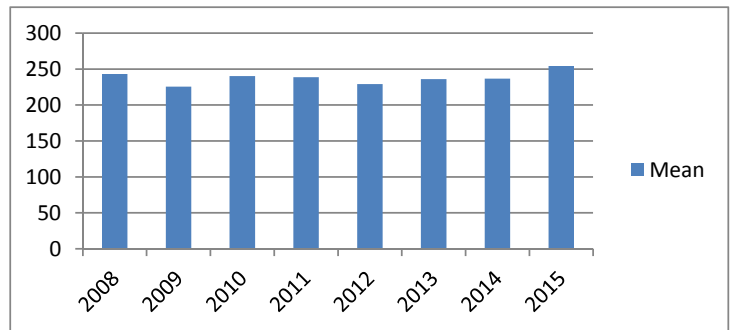
Year	Mean	Median	Standard Deviation	N
2008	258.44	240.00	96.03	54
2009	245.11	192.00	108.94	74
2010	278.18	276.00	101.83	44
2011	257.75	240.00	96.17	72
2012	273.25	240.00	117.83	85
2013	242.28	240.00	71.02	58
2014	297.09	240.00	131.25	35
2015	277.78	288.00	106.23	64



The table for multiple offenders was not included due to low occurrence frequencies.

Average Incarceration Length - Especially Aggravated Kidnapping - Standard Offenders

Year	Mean	Median	Standard Deviation	N
2008	243.14	240.00	49.80	42
2009	225.51	216.00	48.59	53
2010	240.33	252.00	57.76	36
2011	238.73	240.00	48.78	66
2012	229.03	240.00	39.33	64
2013	236.00	240.00	50.55	51
2014	236.77	240.00	48.90	26
2015	254.22	276.00	49.45	54

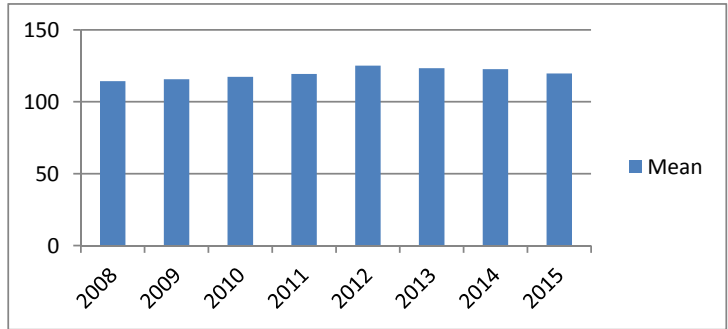


Average Incarceration Lengths in Months by Felony Class and Offense

Note: Column N indicates the number of felony convictions. Individual offenders can have multiple convictions. Incarceration includes life without parole and death sentences. Probation includes sentences to community corrections.

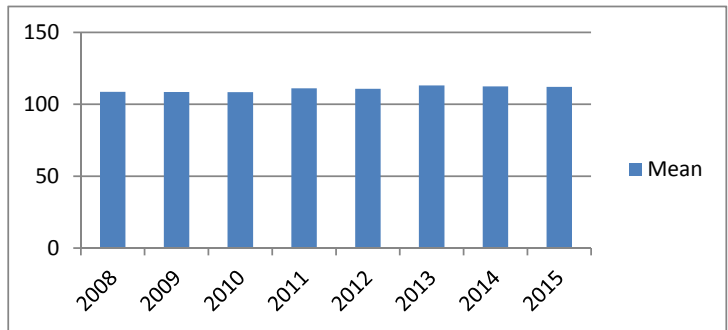
Average Incarceration Length - Felony Class B - All Offenders

Year	Mean	Median	Standard Deviation	N
2008	114.37	96.00	33.00	2,802
2009	115.71	96.00	36.05	2,797
2010	117.35	96.00	40.09	2,700
2011	119.34	108.00	40.17	2,621
2012	125.12	120.00	44.74	2,489
2013	123.30	120.00	40.76	2,249
2014	122.68	108.00	42.24	1,762
2015	119.63	108.00	38.12	1,911



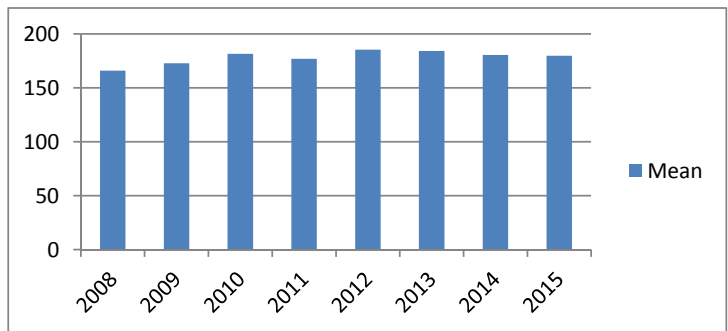
Average Incarceration Length - Felony Class B - Standard Offenders

Year	Mean	Median	Standard Deviation	N
2008	108.70	96.00	17.86	2,389
2009	108.54	96.00	18.02	2,303
2010	108.44	96.00	19.05	2,167
2011	111.14	96.00	20.37	2,125
2012	110.72	96.00	18.77	1,950
2013	113.12	108.00	19.83	1,908
2014	112.41	108.00	20.77	1,456
2015	112.13	108.00	19.56	1,562



Average Incarceration Length - Felony Class B - Multiple Offenders

Year	Mean	Median	Standard Deviation	N
2008	165.88	156.00	33.39	225
2009	172.71	180.00	35.57	255
2010	181.52	180.00	39.68	257
2011	176.96	168.00	38.82	262
2012	185.43	180.00	35.37	367
2013	184.20	180.00	42.71	220
2014	180.41	180.00	41.94	192
2015	179.70	180.00	39.46	218

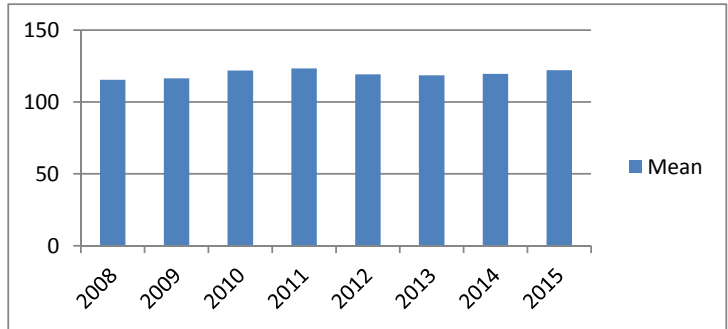


Average Incarceration Lengths in Months by Felony Class and Offense

Note: Column N indicates the number of felony convictions. Individual offenders can have multiple convictions. Incarceration includes life without parole and death sentences. Probation includes sentences to community corrections.

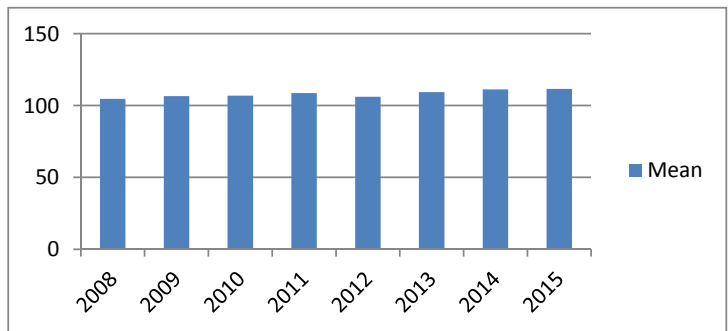
Average Incarceration Length - Schedule II Cocaine - All Offenders

Year	Mean	Median	Standard Deviation	N
2008	115.48	96.00	38.84	865
2009	116.40	96.00	34.94	719
2010	121.85	96.00	48.12	570
2011	123.31	108.00	44.17	466
2012	119.26	108.00	36.89	418
2013	118.58	108.00	32.55	378
2014	119.52	108.00	36.73	289
2015	122.07	120.00	37.46	200



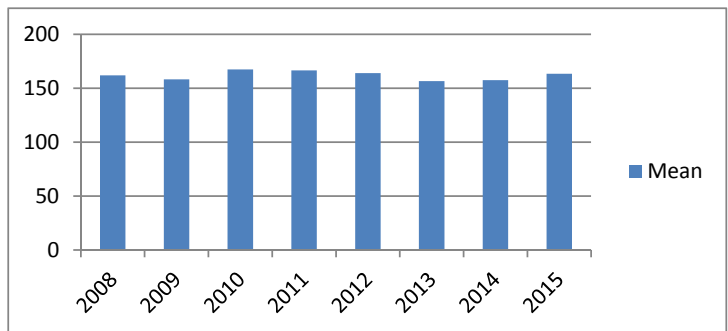
Average Incarceration Length - Schedule II Cocaine - Standard Offenders

Year	Mean	Median	Standard Deviation	N
2008	104.69	96.00	15.55	745
2009	106.58	96.00	18.36	598
2010	106.90	96.00	18.68	471
2011	108.68	96.00	22.58	367
2012	106.10	96.00	17.80	328
2013	109.34	96.00	18.32	310
2014	111.24	103.50	21.64	248
2015	111.48	96.00	20.39	162



Average Incarceration Length - Schedule II Cocaine - Multiple Offenders

Year	Mean	Median	Standard Deviation	N
2008	161.85	144.00	32.94	97
2009	158.14	144.00	28.20	101
2010	167.37	168.00	46.33	76
2011	166.48	156.00	35.10	87
2012	163.95	144.00	33.53	77
2013	156.55	144.00	38.30	55
2014	157.45	144.00	32.28	33
2015	163.40	150.00	44.84	30

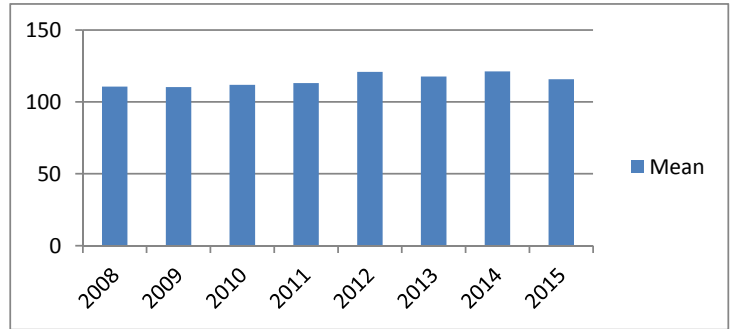


Average Incarceration Lengths in Months by Felony Class and Offense

Note: Column N indicates the number of felony convictions. Individual offenders can have multiple convictions. Incarceration includes life without parole and death sentences. Probation includes sentences to community corrections.

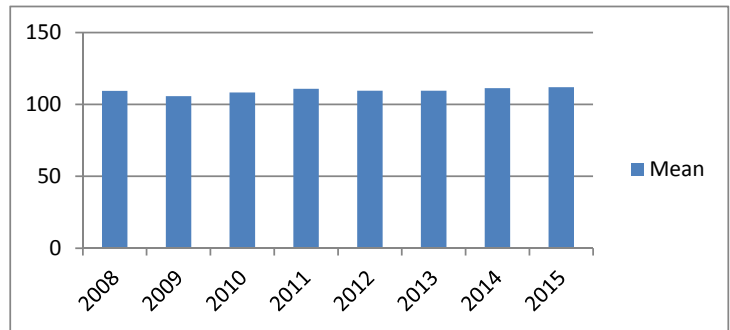
Average Incarceration Length - Aggravated Robbery - All Offenders

Year	Mean	Median	Standard Deviation	N
2008	110.62	96.00	28.59	900
2009	110.33	96.00	35.39	880
2010	111.85	96.00	37.22	833
2011	113.09	96.00	38.30	677
2012	120.91	96.00	48.67	619
2013	117.61	96.00	39.49	506
2014	121.21	96.00	47.67	417
2015	115.78	96.00	35.29	474



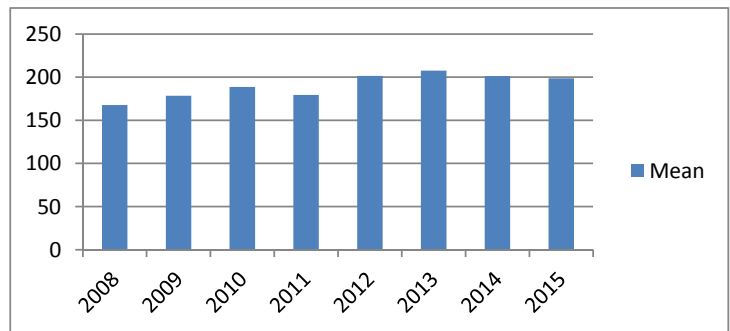
Average Incarceration Length - Aggravated Robbery - Standard Offenders

Year	Mean	Median	Standard Deviation	N
2008	109.37	96.00	17.38	726
2009	105.68	96.00	15.46	640
2010	108.25	96.00	21.49	592
2011	110.90	96.00	18.08	490
2012	109.46	96.00	18.23	473
2013	109.48	96.00	17.20	425
2014	111.29	96.00	20.08	328
2015	111.99	108.00	22.06	373



Average Incarceration Length - Aggravated Robbery - Multiple Offenders

Year	Mean	Median	Standard Deviation	N
2008	167.74	156.00	27.01	47
2009	178.43	180.00	37.15	61
2010	188.59	180.00	44.68	51
2011	179.44	180.00	30.26	32
2012	201.51	204.00	38.34	53
2013	207.50	216.00	28.84	36
2014	201.29	192.00	36.46	31
2015	198.71	192.00	25.45	34



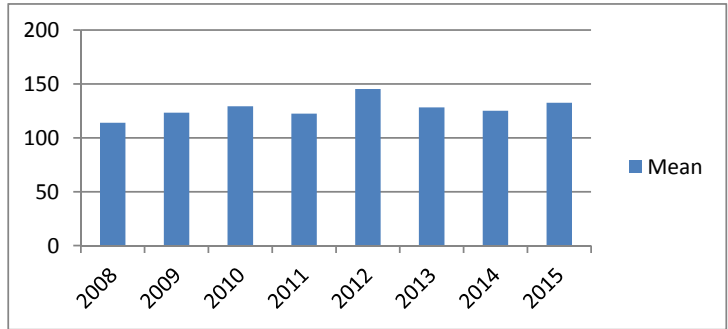
Average Incarceration Lengths in Months by Felony Class and Offense

Note: Column N indicates the number of felony convictions. Individual offenders can have multiple convictions. Incarceration includes life without parole and death sentences. Probation includes sentences to community corrections.

Average Incarceration Length - Aggravated Sexual Battery - All Offenders

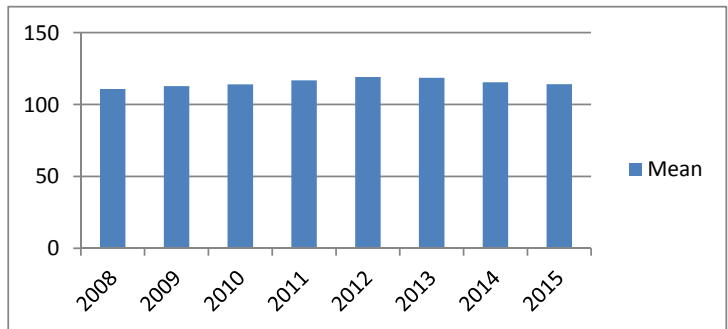
Year	Mean	Median	Standard Deviation	N
2008	113.96	96.00	23.60	188
2009	123.30	120.00	33.31	171
2010	129.17	120.00	36.65	191
2011	122.46	120.00	28.97	222
2012	145.26	144.00	39.68	360
2013	128.27	120.00	37.58	208
2014	125.15	120.00	36.47	195
2015	132.48	120.00	46.25	131

The table for multiple offenders was not included due to low occurrence frequencies.



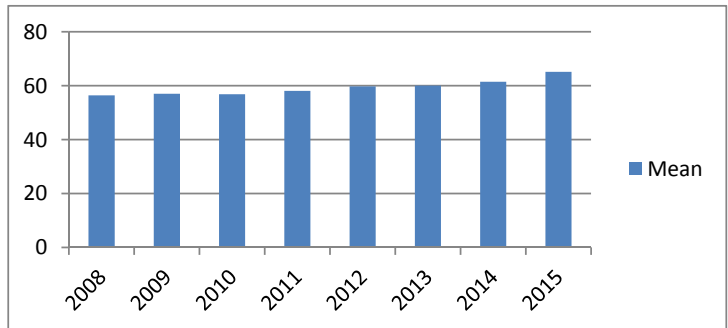
Average Incarceration Length - Aggravated Sexual Battery - Standard Offenders

Year	Mean	Median	Standard Deviation	N
2008	110.81	96.00	18.63	175
2009	112.77	96.00	19.09	146
2010	114.00	108.00	18.41	152
2011	116.83	120.00	17.38	208
2012	119.15	120.00	17.03	220
2013	118.57	120.00	18.95	181
2014	115.44	120.00	18.21	167
2015	114.17	120.00	15.93	107



Average Incarceration Length - Class C - All Offenders

Year	Mean	Median	Standard Deviation	N
2008	56.41	48.00	24.23	6,791
2009	57.00	48.00	26.07	6,764
2010	56.82	48.00	25.77	7,689
2011	58.09	48.00	27.03	7,461
2012	59.73	48.00	28.63	6,719
2013	60.02	48.00	28.89	5,612
2014	61.48	48.00	30.28	4,890
2015	65.16	60.00	32.00	3,978

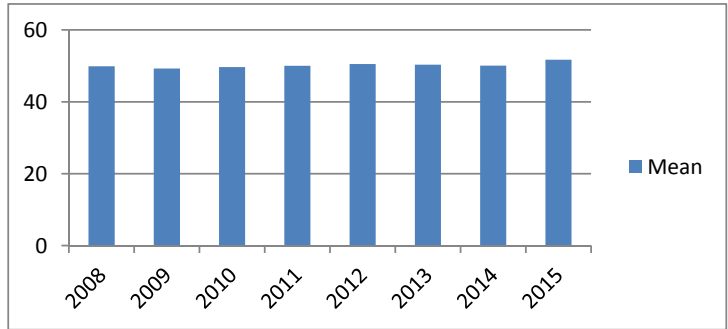


Average Incarceration Lengths in Months by Felony Class and Offense

Note: Column N indicates the number of felony convictions. Individual offenders can have multiple convictions. Incarceration includes life without parole and death sentences. Probation includes sentences to community corrections.

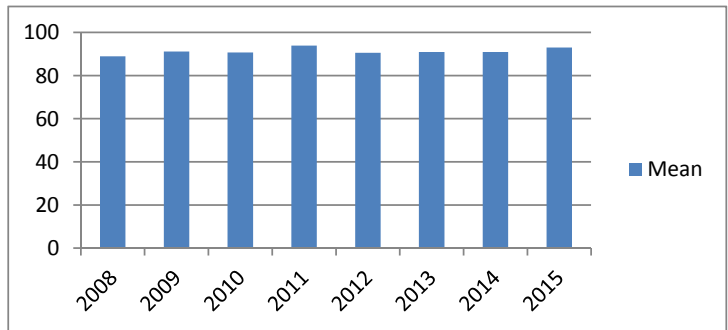
Average Incarceration Length - Class C - Standard Offenders

Year	Mean	Median	Standard Deviation	N
2008	49.89	48.00	15.21	5,778
2009	49.26	48.00	15.55	5,650
2010	49.68	48.00	16.06	6,509
2011	50.04	48.00	16.22	6,254
2012	50.49	48.00	16.47	5,472
2013	50.33	48.00	16.00	4,531
2014	50.08	48.00	15.77	3,802
2015	51.69	48.00	18.64	2,927



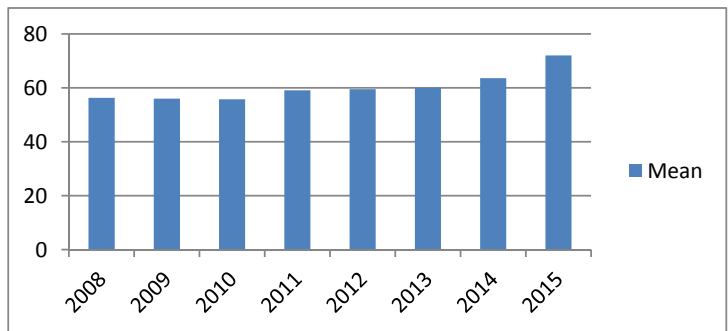
Average Incarceration Length - Class C - Multiple Offenders

Year	Mean	Median	Standard Deviation	N
2008	88.94	96.00	20.35	778
2009	91.15	96.00	21.17	876
2010	90.68	96.00	20.71	928
2011	93.86	96.00	22.41	908
2012	90.56	96.00	21.48	929
2013	90.94	96.00	22.09	806
2014	90.94	84.00	21.18	827
2015	93.01	96.00	22.08	778



Average Incarceration Length - Aggravated Burglary - All Offenders

Year	Mean	Median	Standard Deviation	N
2008	56.30	48.00	25.82	1,540
2009	56.03	48.00	26.85	1,776
2010	55.79	48.00	25.15	2,187
2011	59.09	48.00	28.72	2,284
2012	59.50	48.00	30.46	2,113
2013	59.98	48.00	30.70	1,677
2014	63.58	54.00	31.65	1,307
2015	72.04	60.00	37.83	1,108

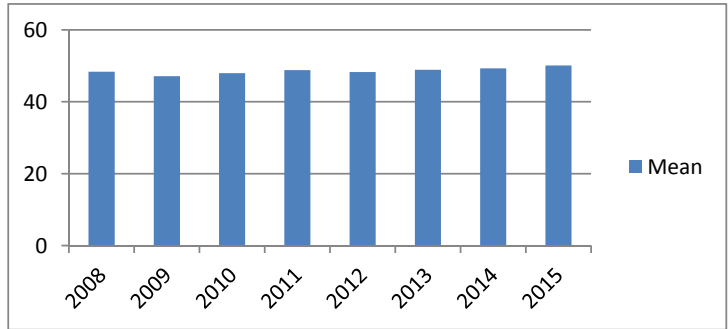


Average Incarceration Lengths in Months by Felony Class and Offense

Note: Column N indicates the number of felony convictions. Individual offenders can have multiple convictions. Incarceration includes life without parole and death sentences. Probation includes sentences to community corrections.

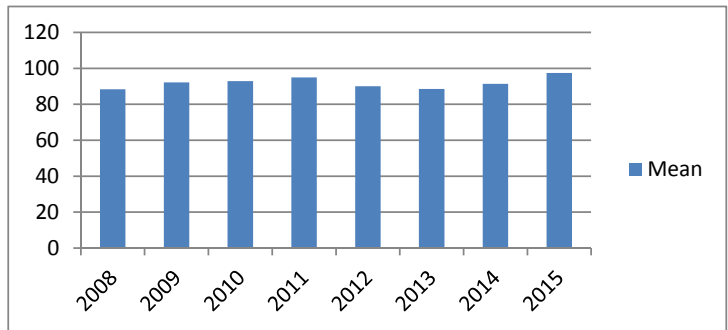
Average Incarceration Length - Aggravated Burglary - Standard Offenders

Year	Mean	Median	Standard Deviation	N
2008	48.34	48.00	14.57	1,299
2009	47.12	36.00	13.93	1,473
2010	47.95	48.00	13.86	1,852
2011	48.83	48.00	14.75	1,855
2012	48.29	48.00	14.27	1,676
2013	48.88	48.00	14.39	1,334
2014	49.32	48.00	14.33	958
2015	50.08	48.00	18.92	688



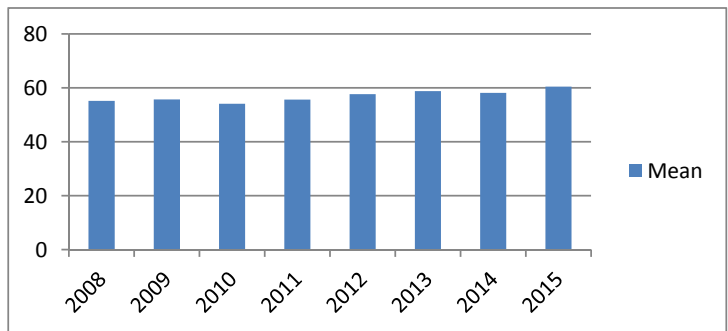
Average Incarceration Length - Aggravated Burglary - Multiple Offenders

Year	Mean	Median	Standard Deviation	N
2008	88.32	84.00	19.63	172
2009	92.20	96.00	18.80	228
2010	92.87	96.00	17.83	271
2011	94.96	96.00	22.18	310
2012	90.06	96.00	19.87	281
2013	88.56	84.00	21.69	238
2014	91.42	84.00	20.21	268
2015	97.47	96.00	24.65	320



Average Incarceration Length - Aggravated Assault - All Offenders

Year	Mean	Median	Standard Deviation	N
2008	55.14	48.00	22.89	1,135
2009	55.68	48.00	25.73	1,074
2010	54.12	48.00	24.96	1,015
2011	55.62	48.00	25.43	1,083
2012	57.68	48.00	27.78	1,070
2013	58.81	48.00	31.83	893
2014	58.12	48.00	28.43	838
2015	60.44	48.00	29.38	818

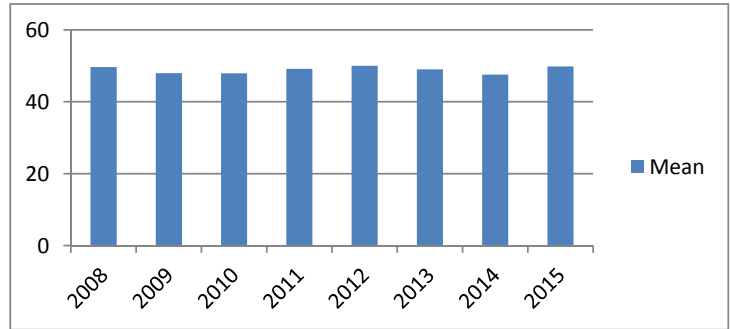


Average Incarceration Lengths in Months by Felony Class and Offense

Note: Column N indicates the number of felony convictions. Individual offenders can have multiple convictions. Incarceration includes life without parole and death sentences. Probation includes sentences to community corrections.

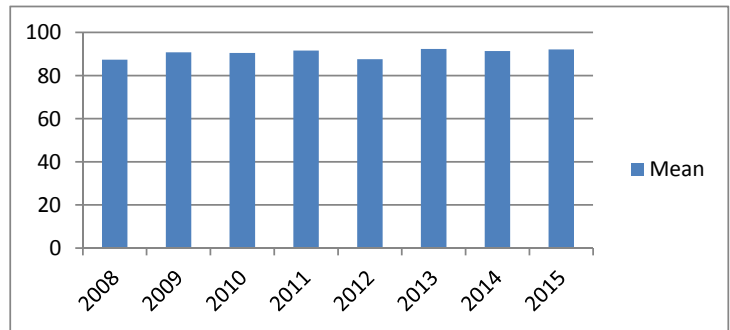
Average Incarceration Length - Aggravated Assault - Standard Offenders

Year	Mean	Median	Standard Deviation	N
2008	49.65	48.00	15.05	982
2009	47.96	48.00	14.59	892
2010	47.91	36.00	14.85	886
2011	49.15	48.00	15.49	941
2012	50.00	48.00	16.92	894
2013	49.04	48.00	14.89	727
2014	47.57	36.00	14.59	667
2015	49.82	48.00	17.95	645



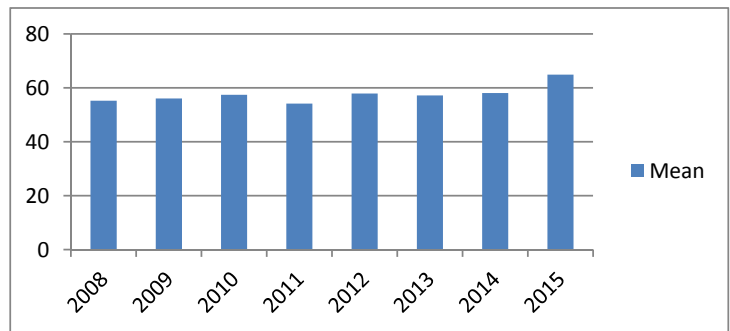
Average Incarceration Length - Aggravated Assault - Multiple Offenders

Year	Mean	Median	Standard Deviation	N
2008	87.38	84.00	21.24	127
2009	90.78	96.00	20.45	141
2010	90.47	96.00	21.83	91
2011	91.57	96.00	20.71	105
2012	87.57	96.00	22.62	142
2013	92.33	96.00	26.80	141
2014	91.36	96.00	20.01	138
2015	92.06	84.00	22.36	131



Average Incarceration Length - Schedule II Cocaine < 1/2 Gram - All Offenders

Year	Mean	Median	Standard Deviation	N
2008	55.21	48.00	22.38	1,422
2009	56.02	48.00	23.44	1,193
2010	57.42	48.00	26.94	1,303
2011	54.13	48.00	23.10	960
2012	57.87	48.00	25.11	485
2013	57.15	48.00	20.82	262
2014	58.08	60.00	23.21	284
2015	64.88	60.00	30.78	139

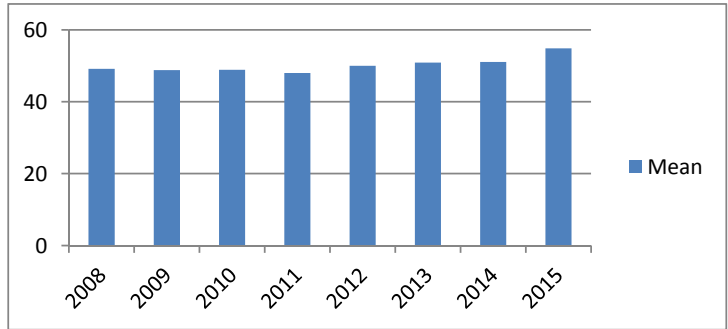


Average Incarceration Lengths in Months by Felony Class and Offense

Note: Column N indicates the number of felony convictions. Individual offenders can have multiple convictions. Incarceration includes life without parole and death sentences. Probation includes sentences to community corrections.

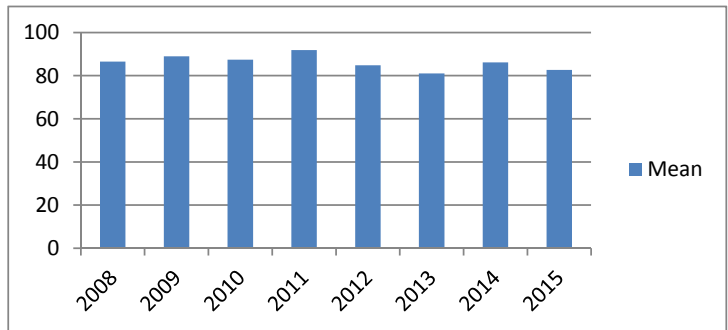
Average Incarceration Length - Schedule II Cocaine < 1/2 Gram - Standard Offenders

Year	Mean	Median	Standard Deviation	N
2008	49.16	48.00	14.78	1,202
2009	48.81	48.00	14.18	990
2010	48.90	48.00	14.95	1,050
2011	48.01	48.00	13.98	813
2012	50.01	48.00	15.24	393
2013	50.90	48.00	15.04	207
2014	51.08	48.00	16.41	228
2015	54.83	51.00	19.06	108



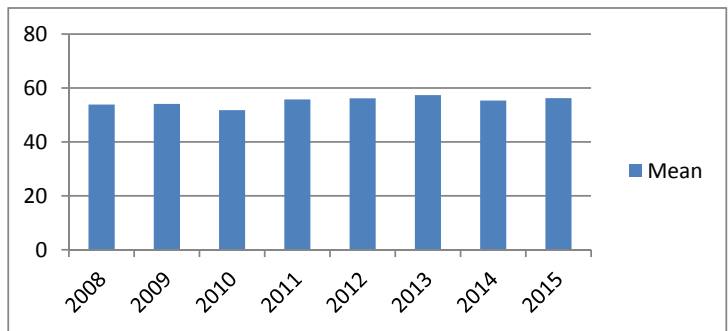
Average Incarceration Length - Schedule II Cocaine < 1/2 Gram - Multiple Offenders

Year	Mean	Median	Standard Deviation	N
2008	86.55	96.00	17.29	181
2009	88.98	84.00	20.32	169
2010	87.42	73.00	24.05	205
2011	91.86	96.00	22.49	109
2012	84.83	73.00	24.85	77
2013	81.00	72.00	21.76	52
2014	86.16	72.00	18.09	50
2015	82.67	84.00	18.36	18



Average Incarceration Length - Schedule II Drugs: Max \$100,000 Fine - All Offenders

Year	Mean	Median	Standard Deviation	N
2008	53.85	48.00	20.72	565
2009	54.08	48.00	22.96	511
2010	51.75	48.00	21.54	704
2011	55.77	48.00	24.49	807
2012	56.13	48.00	23.68	762
2013	57.32	48.00	27.64	724
2014	55.34	48.00	31.58	580
2015	56.22	48.00	25.62	287

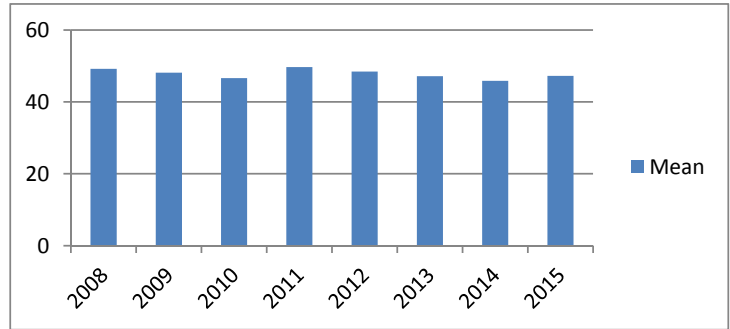


Average Incarceration Lengths in Months by Felony Class and Offense

Note: Column N indicates the number of felony convictions. Individual offenders can have multiple convictions. Incarceration includes life without parole and death sentences. Probation includes sentences to community corrections.

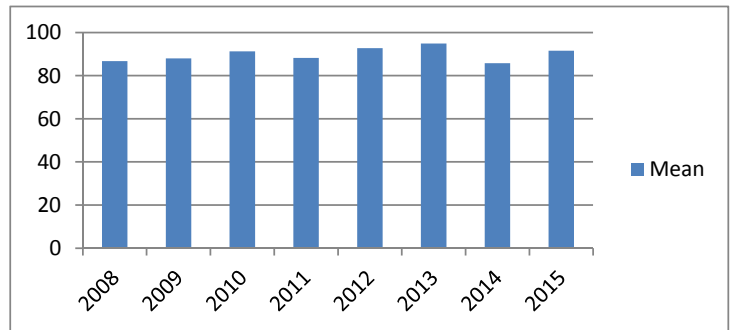
Average Incarceration Length - Schedule II Drugs: Max \$100,000 Fine - Standard Offenders

Year	Mean	Median	Standard Deviation	N
2008	49.19	48.00	14.15	495
2009	48.12	48.00	14.53	443
2010	46.63	36.03	13.87	621
2011	49.69	48.00	17.00	695
2012	48.43	48.00	14.19	640
2013	47.14	36.00	14.62	580
2014	45.85	36.00	14.44	476
2015	47.24	36.00	16.02	230



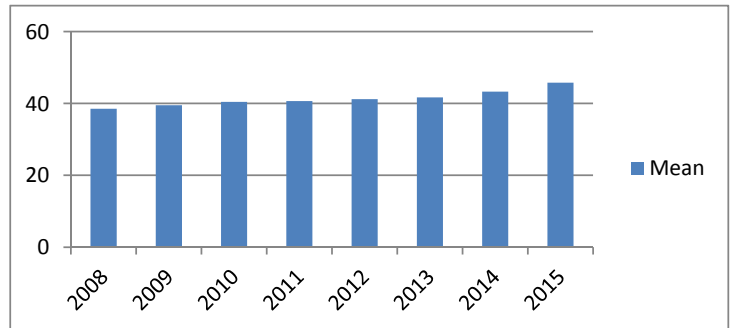
Average Incarceration Length - Schedule II Drugs: Max \$100,000 Fine - Multiple Offenders

Year	Mean	Median	Standard Deviation	N
2008	86.74	84.00	21.52	57
2009	88.03	72.00	21.96	64
2010	91.26	96.00	20.95	73
2011	88.18	84.00	19.17	92
2012	92.77	96.00	20.92	107
2013	94.89	96.00	21.09	108
2014	85.75	81.00	21.78	80
2015	91.55	96.00	19.77	51



Average Incarceration Length - Class D - All Offenders

Year	Mean	Median	Standard Deviation	N
2008	38.53	36.00	22.07	6,168
2009	39.48	36.00	21.19	6,599
2010	40.41	36.00	23.59	7,371
2011	40.66	36.00	22.22	7,859
2012	41.18	36.00	24.48	6,672
2013	41.70	36.00	23.94	6,061
2014	43.30	36.00	26.11	4,993
2015	45.76	36.00	28.80	3,662

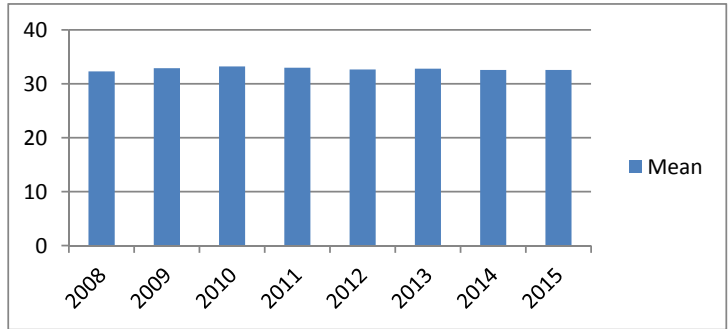


Average Incarceration Lengths in Months by Felony Class and Offense

Note: Column N indicates the number of felony convictions. Individual offenders can have multiple convictions. Incarceration includes life without parole and death sentences. Probation includes sentences to community corrections.

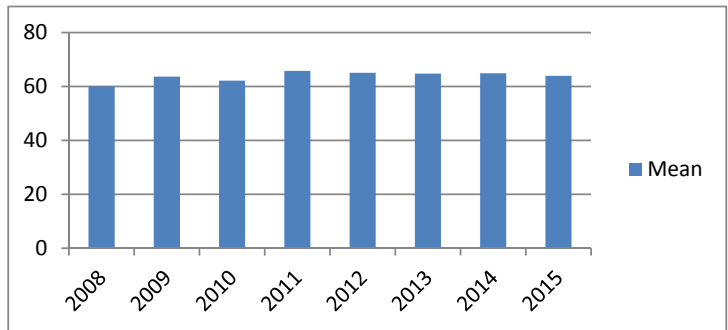
Average Incarceration Length - Class D - Standard Offenders

Year	Mean	Median	Standard Deviation	N
2008	32.28	24.00	10.30	5,270
2009	32.89	24.03	10.42	5,494
2010	33.20	30.00	11.71	6,135
2011	32.99	24.03	10.49	6,379
2012	32.66	24.03	10.25	5,414
2013	32.80	24.03	10.29	4,828
2014	32.57	24.03	10.19	3,809
2015	32.55	24.03	11.10	2,607



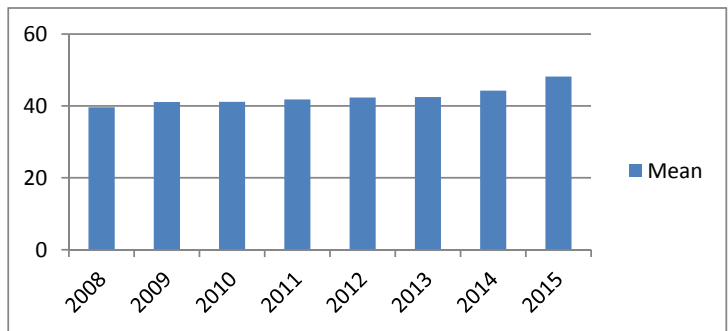
Average Incarceration Length - Class D - Multiple Offenders

Year	Mean	Median	Standard Deviation	N
2008	60.02	48.00	17.89	650
2009	63.62	60.00	18.01	853
2010	62.17	60.00	18.11	882
2011	65.75	60.00	17.62	1,171
2012	65.06	60.00	19.08	892
2013	64.78	60.00	18.55	901
2014	64.90	60.00	18.16	855
2015	63.95	60.00	19.61	750



Average Incarceration Length - Theft: \$1,000 to \$10,000 - All Offenders

Year	Mean	Median	Standard Deviation	N
2008	39.62	36.00	23.99	1,985
2009	41.08	36.00	23.76	2,016
2010	41.13	36.00	23.98	2,275
2011	41.80	36.00	22.40	2,349
2012	42.34	36.00	25.05	2,423
2013	42.47	36.00	25.06	1,978
2014	44.26	36.00	26.96	1,666
2015	48.15	36.00	30.86	1,239

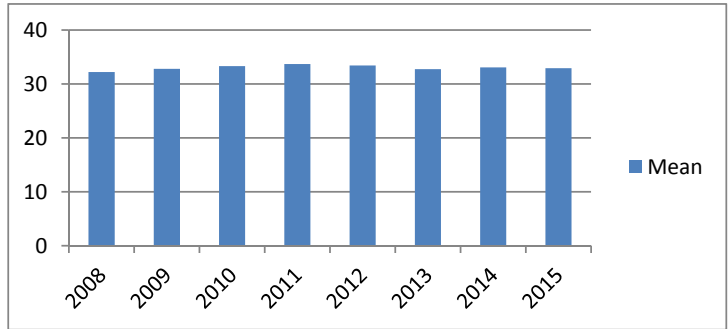


Average Incarceration Lengths in Months by Felony Class and Offense

Note: Column N indicates the number of felony convictions. Individual offenders can have multiple convictions. Incarceration includes life without parole and death sentences. Probation includes sentences to community corrections.

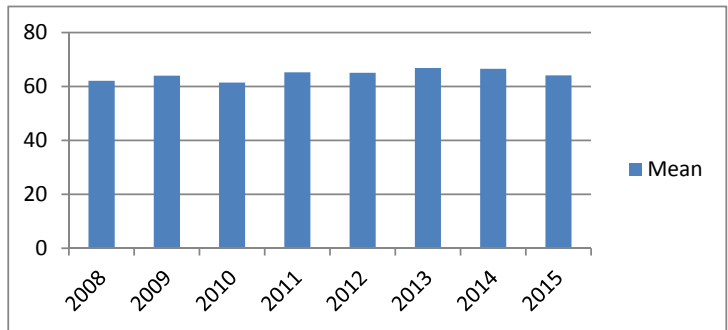
Average Incarceration Length - Theft: \$1,000 to \$10,000 - Standard Offenders

Year	Mean	Median	Standard Deviation	N
2008	32.21	24.00	10.21	1,666
2009	32.80	24.03	10.37	1,635
2010	33.30	30.00	11.21	1,866
2011	33.70	36.00	10.44	1,863
2012	33.42	30.00	10.40	1,945
2013	32.72	24.03	10.35	1,547
2014	33.05	27.00	10.14	1,277
2015	32.90	24.03	11.82	825



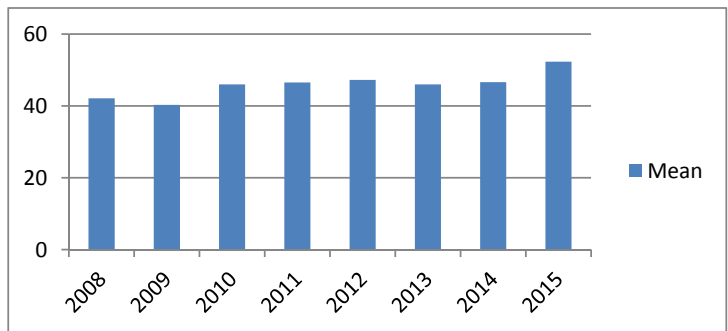
Average Incarceration Length - Theft: \$1,000 to \$10,000 - Multiple Offenders

Year	Mean	Median	Standard Deviation	N
2008	62.06	60.00	19.02	233
2009	64.01	60.00	19.09	279
2010	61.45	60.00	16.34	283
2011	65.23	60.00	18.54	399
2012	65.03	60.00	19.38	333
2013	66.81	72.00	20.01	324
2014	66.55	72.00	18.44	276
2015	64.11	60.00	20.89	303



Average Incarceration Length - Burglary Other Than Habitation - All Offenders

Year	Mean	Median	Standard Deviation	N
2008	42.13	36.00	26.75	1,095
2009	40.27	36.00	20.32	912
2010	45.97	36.00	27.53	1,208
2011	46.52	36.00	25.93	1,236
2012	47.22	36.00	29.85	923
2013	45.98	48.00	24.95	865
2014	46.60	39.00	27.61	730
2015	52.31	48.00	33.10	500

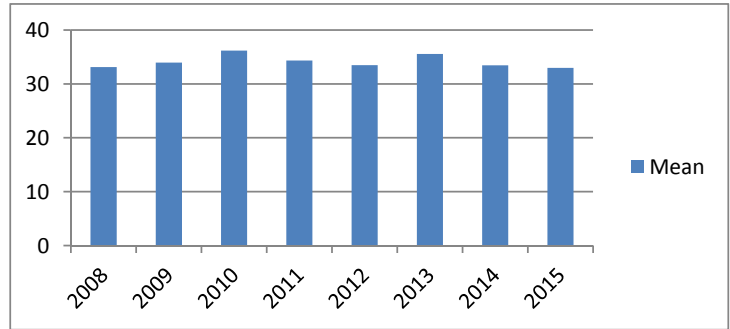


Average Incarceration Lengths in Months by Felony Class and Offense

Note: Column N indicates the number of felony convictions. Individual offenders can have multiple convictions. Incarceration includes life without parole and death sentences. Probation includes sentences to community corrections.

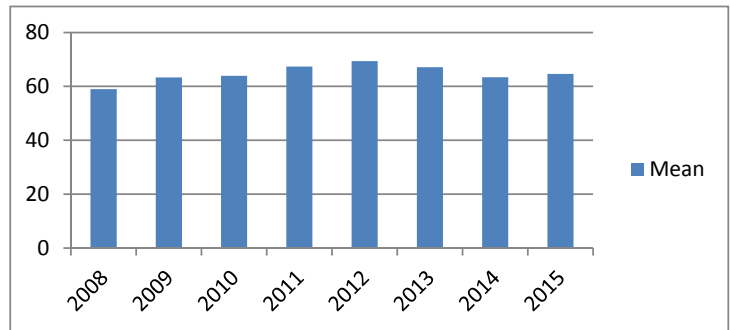
Average Incarceration Length - Burglary Other Than Habitation - Standard Offenders

Year	Mean	Median	Standard Deviation	N
2008	33.13	24.03	10.54	897
2009	33.94	36.00	10.61	757
2010	36.17	36.00	15.45	933
2011	34.32	36.00	10.55	888
2012	33.47	36.00	10.20	683
2013	35.55	36.00	10.76	657
2014	33.44	25.00	10.48	514
2015	32.97	25.00	11.97	303



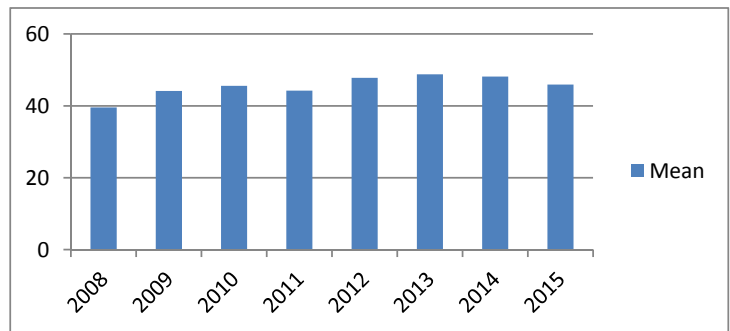
Average Incarceration Length - Burglary Other Than Habitation - Multiple Offenders

Year	Mean	Median	Standard Deviation	N
2008	58.98	48.00	16.56	124
2009	63.30	60.00	16.89	115
2010	63.92	60.00	17.15	196
2011	67.36	72.00	15.65	267
2012	69.37	72.00	20.47	162
2013	67.13	60.00	17.40	149
2014	63.39	60.00	16.47	151
2015	64.62	72.00	17.27	135



Average Incarceration Length - Identity Theft - All Offenders

Year	Mean	Median	Standard Deviation	N
2008	39.57	30.00	23.00	543
2009	44.15	42.00	21.14	603
2010	45.58	36.00	30.20	420
2011	44.26	36.00	26.02	575
2012	47.82	48.00	28.64	356
2013	48.78	42.00	29.88	414
2014	48.15	36.00	30.11	360
2015	45.95	48.00	23.96	186

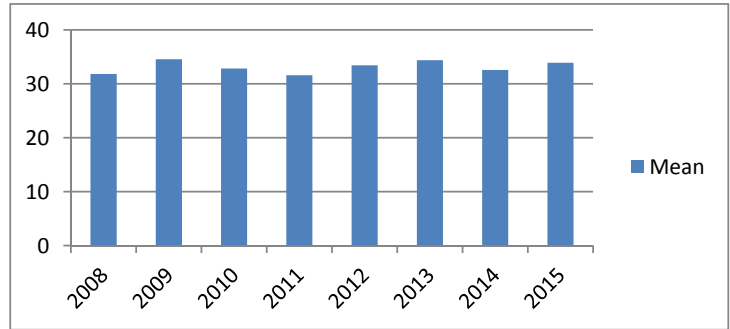


Average Incarceration Lengths in Months by Felony Class and Offense

Note: Column N indicates the number of felony convictions. Individual offenders can have multiple convictions. Incarceration includes life without parole and death sentences. Probation includes sentences to community corrections.

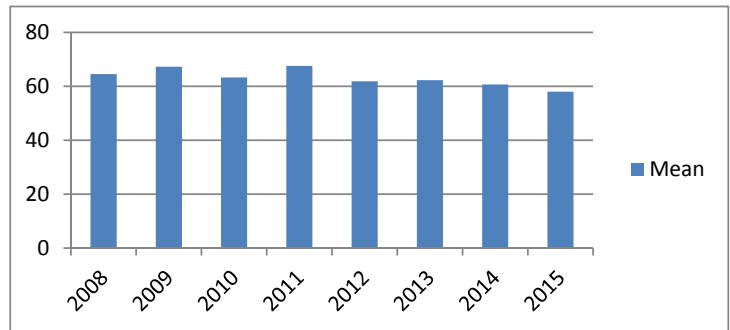
Average Incarceration Length - Identity Theft - Standard Offenders

Year	Mean	Median	Standard Deviation	N
2008	31.82	24.00	10.05	458
2009	34.56	36.00	10.49	445
2010	32.85	24.03	10.17	312
2011	31.60	24.00	9.91	412
2012	33.45	24.03	10.91	240
2013	34.39	36.00	10.54	296
2014	32.59	36.00	8.11	237
2015	33.91	29.00	10.76	124



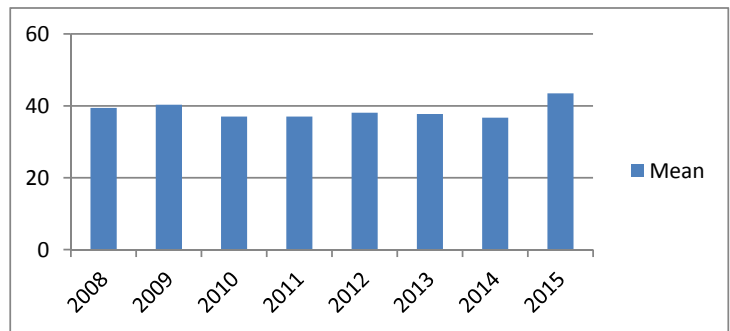
Average Incarceration Length - Identity Theft - Multiple Offenders

Year	Mean	Median	Standard Deviation	N
2008	64.58	60.00	17.96	55
2009	67.32	72.00	17.20	141
2010	63.30	54.00	23.35	73
2011	67.60	66.00	17.73	131
2012	61.88	60.00	15.30	86
2013	62.31	60.00	16.35	70
2014	60.68	48.00	18.50	88
2015	58.05	48.00	14.56	43



Average Incarceration Length - Obtain Drugs by Fraud - All Offenders

Year	Mean	Median	Standard Deviation	N
2008	39.42	48.00	12.69	267
2009	40.33	36.00	13.62	269
2010	37.04	24.03	20.91	185
2011	37.04	36.00	14.47	311
2012	38.08	31.50	24.22	170
2013	37.74	36.00	19.03	132
2014	36.70	36.00	16.42	121
2015	43.47	24.03	26.39	87

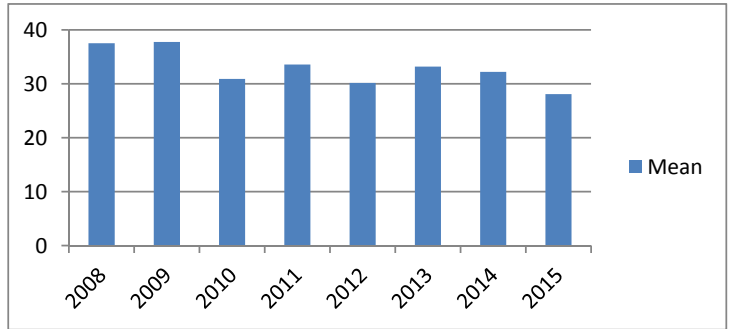


Average Incarceration Lengths in Months by Felony Class and Offense

Note: Column N indicates the number of felony convictions. Individual offenders can have multiple convictions. Incarceration includes life without parole and death sentences. Probation includes sentences to community corrections.

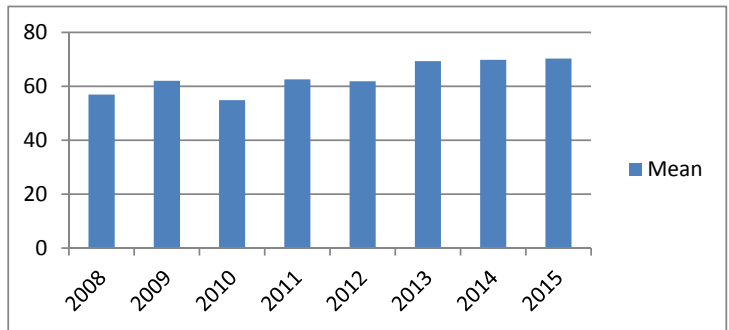
Average Incarceration Length - Obtain Drugs by Fraud - Standard Offenders

Year	Mean	Median	Standard Deviation	N
2008	37.54	36.00	10.96	242
2009	37.77	36.00	10.21	244
2010	30.92	24.00	9.03	163
2011	33.59	36.00	10.27	274
2012	30.16	24.00	8.23	143
2013	33.21	30.00	10.01	120
2014	32.22	24.03	9.37	108
2015	28.09	24.03	8.39	62



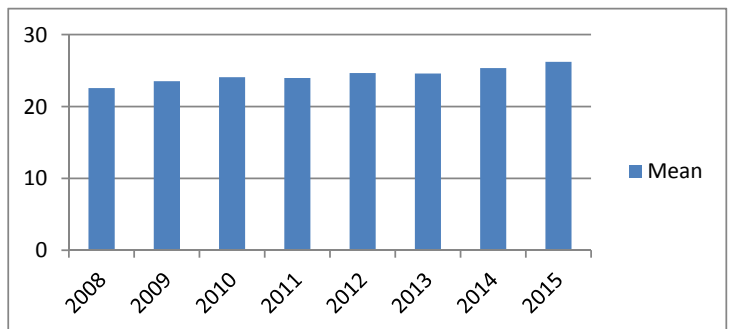
Average Incarceration Length - Obtain Drugs by Fraud - Multiple Offenders

Year	Mean	Median	Standard Deviation	N
2008	56.96	48.00	14.06	24
2009	62.09	60.00	13.85	23
2010	54.86	48.00	9.44	7
2011	62.59	60.00	15.53	37
2012	61.89	48.00	17.56	19
2013	69.33	72.00	8.00	9
2014	69.82	72.00	12.94	11
2015	70.29	72.00	6.41	14



Average Incarceration Length - Class E - All Offenders

Year	Mean	Median	Standard Deviation	N
2008	22.57	24.00	11.99	9,363
2009	23.51	24.00	12.50	8,971
2010	24.09	24.00	13.49	8,661
2011	23.96	24.00	13.22	8,665
2012	24.67	24.00	14.08	7,616
2013	24.59	24.00	14.80	7,267
2014	25.35	24.00	14.68	5,666
2015	26.21	24.00	14.95	4,227

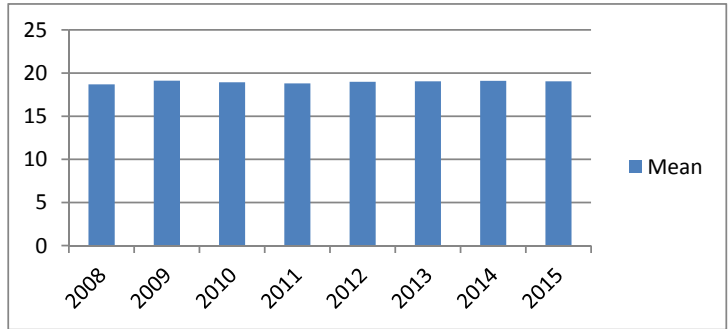


Average Incarceration Lengths in Months by Felony Class and Offense

Note: Column N indicates the number of felony convictions. Individual offenders can have multiple convictions. Incarceration includes life without parole and death sentences. Probation includes sentences to community corrections.

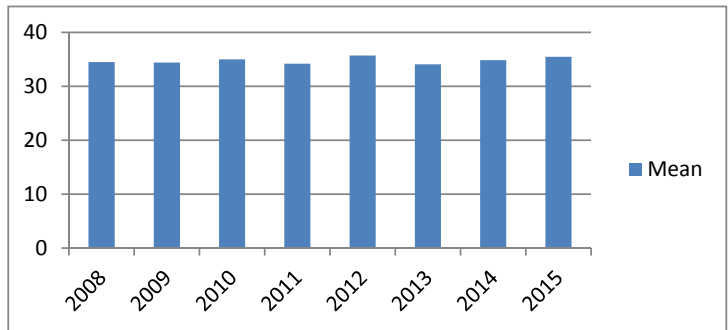
Average Incarceration Length - Class E - Standard Offenders

Year	Mean	Median	Standard Deviation	N
2008	18.70	24.00	6.19	7,656
2009	19.12	24.00	6.29	7,069
2010	18.93	24.00	6.36	6,691
2011	18.81	24.00	6.42	6,542
2012	18.98	24.00	6.42	5,734
2013	19.04	24.00	6.52	5,498
2014	19.10	24.00	6.93	4,138
2015	19.04	24.00	6.50	2,891



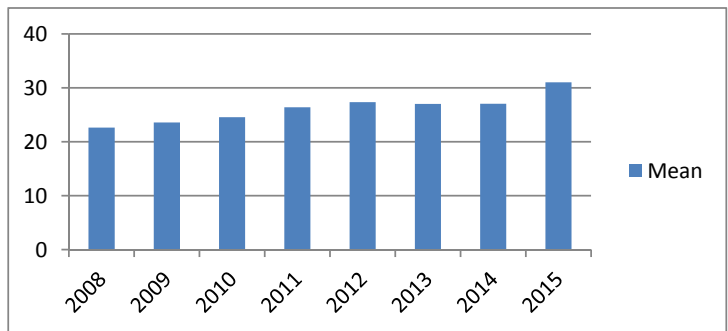
Average Incarceration Length - Class E - Multiple Offenders

Year	Mean	Median	Standard Deviation	N
2008	34.50	36.00	10.38	1,298
2009	34.42	36.00	10.41	1,484
2010	35.02	36.00	10.53	1,416
2011	34.21	36.00	10.44	1,630
2012	35.73	36.00	10.77	1,402
2013	34.10	36.00	10.83	1,258
2014	34.86	36.00	10.25	1,088
2015	35.49	36.00	11.47	976



Average Incarceration Length - Forgery: Up to \$1,000 - All Offenders

Year	Mean	Median	Standard Deviation	N
2008	22.65	24.00	11.53	2,690
2009	23.57	24.00	10.78	2,103
2010	24.58	24.00	13.80	1,648
2011	26.39	24.00	15.00	1,408
2012	27.35	24.00	16.66	1,170
2013	27.03	24.00	20.59	1,206
2014	27.05	24.00	16.27	602
2015	31.03	24.00	15.80	399

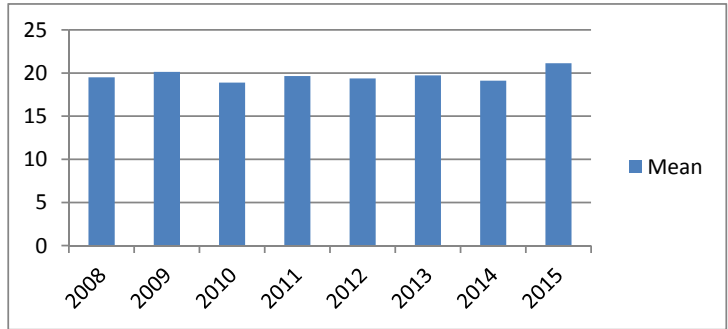


Average Incarceration Lengths in Months by Felony Class and Offense

Note: Column N indicates the number of felony convictions. Individual offenders can have multiple convictions. Incarceration includes life without parole and death sentences. Probation includes sentences to community corrections.

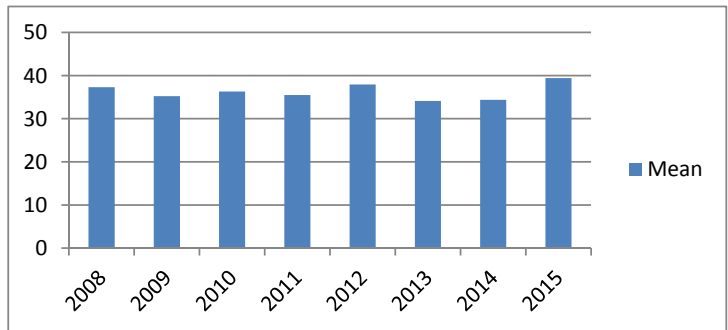
Average Incarceration Length - Forgery: Up to \$1,000 - Standard Offenders

Year	Mean	Median	Standard Deviation	N
2008	19.51	24.00	5.92	2,352
2009	20.13	24.00	5.90	1,712
2010	18.89	24.00	6.19	1,273
2011	19.65	24.00	6.45	1,014
2012	19.37	24.00	5.94	850
2013	19.73	24.00	7.21	952
2014	19.12	24.00	5.93	417
2015	21.15	24.00	5.81	247



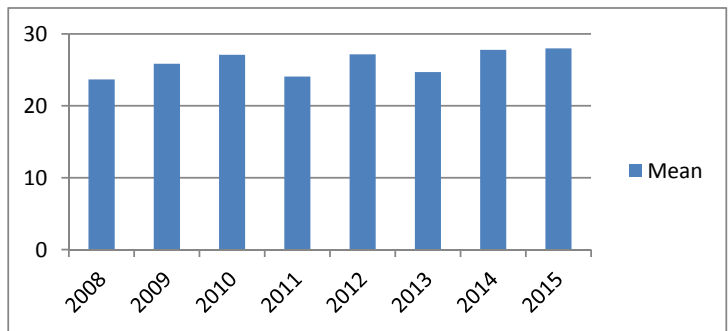
Average Incarceration Length - Forgery: Up to \$1,000 - Multiple Offenders

Year	Mean	Median	Standard Deviation	N
2008	37.29	36.00	10.02	245
2009	35.22	36.00	10.68	333
2010	36.28	36.00	11.06	243
2011	35.47	36.00	11.09	274
2012	37.92	36.03	9.39	196
2013	34.13	36.00	10.54	109
2014	34.39	36.00	10.18	121
2015	39.41	48.00	10.40	88



Average Incarceration Length - Burglary: Auto - All Offenders

Year	Mean	Median	Standard Deviation	N
2008	23.68	24.00	12.09	1,034
2009	25.86	24.00	14.78	1,262
2010	27.09	24.00	15.59	1,471
2011	24.07	24.00	12.69	1,551
2012	27.17	24.00	15.56	983
2013	24.69	24.00	12.64	939
2014	27.78	24.00	15.55	846
2015	27.98	24.00	16.02	552

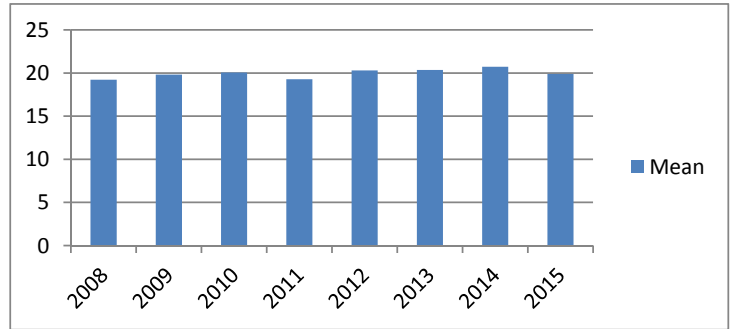


Average Incarceration Lengths in Months by Felony Class and Offense

Note: Column N indicates the number of felony convictions. Individual offenders can have multiple convictions. Incarceration includes life without parole and death sentences. Probation includes sentences to community corrections.

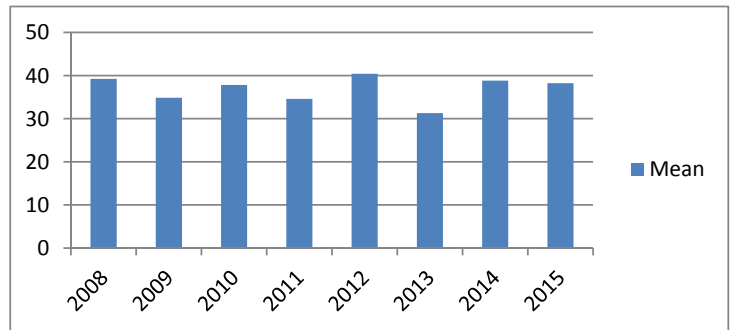
Average Incarceration Length - Burglary: Auto - Standard Offenders

Year	Mean	Median	Standard Deviation	N
2008	19.22	24.00	6.15	838
2009	19.82	24.00	5.75	963
2010	20.06	24.00	6.42	1,089
2011	19.27	24.00	6.14	1,195
2012	20.30	24.00	7.44	732
2013	20.35	24.00	5.97	729
2014	20.72	24.00	7.05	624
2015	19.89	24.00	5.98	371



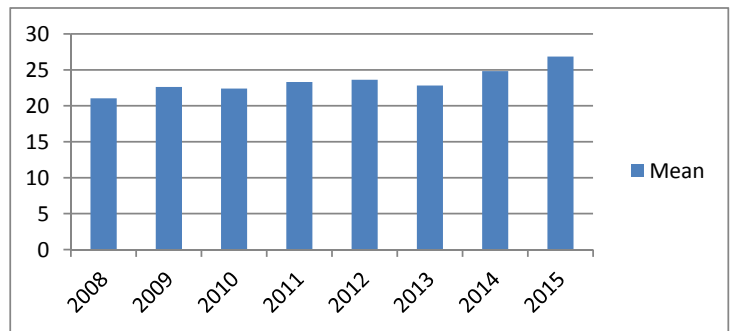
Average Incarceration Length - Burglary: Auto - Multiple Offenders

Year	Mean	Median	Standard Deviation	N
2008	39.24	36.00	9.98	156
2009	34.86	36.00	10.46	195
2010	37.83	36.00	10.44	249
2011	34.58	36.00	10.59	269
2012	40.43	48.00	11.10	183
2013	31.29	25.00	9.09	151
2014	38.83	42.00	9.66	141
2015	38.22	36.00	14.54	130



Average Incarceration Length - Theft: \$500 - \$1,000 - All Offenders

Year	Mean	Median	Standard Deviation	N
2008	21.05	18.00	12.39	992
2009	22.62	24.00	12.47	1,024
2010	22.40	24.00	12.37	1,013
2011	23.31	24.00	13.17	1,113
2012	23.62	24.00	14.51	1,083
2013	22.82	24.00	12.88	919
2014	24.82	24.00	15.04	872
2015	26.85	24.00	15.86	582

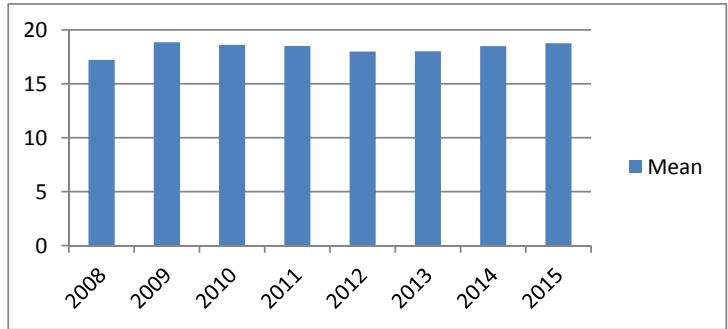


Average Incarceration Lengths in Months by Felony Class and Offense

Note: Column N indicates the number of felony convictions. Individual offenders can have multiple convictions. Incarceration includes life without parole and death sentences. Probation includes sentences to community corrections.

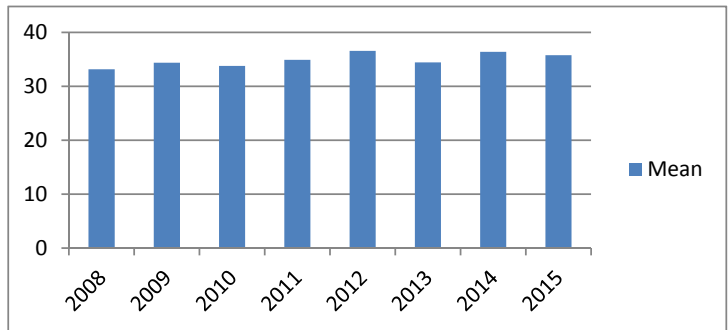
Average Incarceration Length - Theft: \$500 - \$1,000 - Standard Offenders

Year	Mean	Median	Standard Deviation	N
2008	17.22	12.00	6.14	825
2009	18.86	24.00	6.87	853
2010	18.62	24.00	6.21	832
2011	18.50	24.00	6.13	880
2012	17.99	18.00	6.41	850
2013	18.03	18.00	6.27	724
2014	18.49	24.00	6.00	663
2015	18.76	24.00	6.14	383



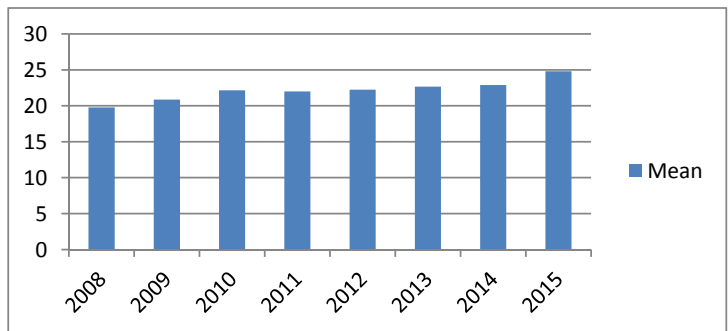
Average Incarceration Length - Theft: \$500 - \$1,000 - Multiple Offenders

Year	Mean	Median	Standard Deviation	N
2008	33.15	24.02	11.23	122
2009	34.38	36.00	9.73	126
2010	33.80	27.02	11.88	136
2011	34.91	36.00	10.64	179
2012	36.58	36.00	11.65	158
2013	34.43	36.00	10.20	147
2014	36.40	36.00	10.40	144
2015	35.76	36.00	12.48	145



Average Incarceration Length - Schedule VI Drugs: Not < 1/2 Ounce - All Offenders

Year	Mean	Median	Standard Deviation	N
2008	19.76	24.00	8.50	639
2009	20.86	24.00	10.30	651
2010	22.16	24.00	11.76	641
2011	21.99	24.00	10.69	699
2012	22.24	24.00	10.67	643
2013	22.67	24.00	11.69	629
2014	22.88	24.00	11.37	501
2015	24.80	24.00	13.26	330

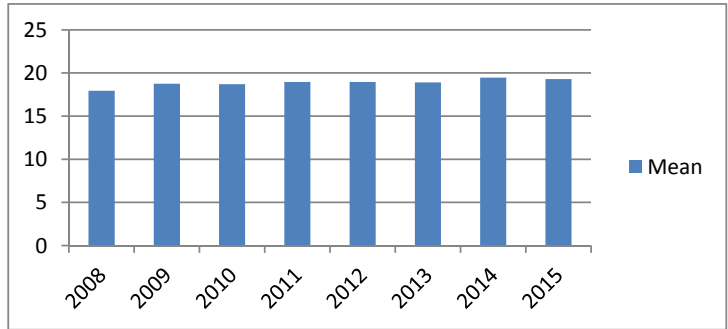


Average Incarceration Lengths in Months by Felony Class and Offense

Note: Column N indicates the number of felony convictions. Individual offenders can have multiple convictions. Incarceration includes life without parole and death sentences. Probation includes sentences to community corrections.

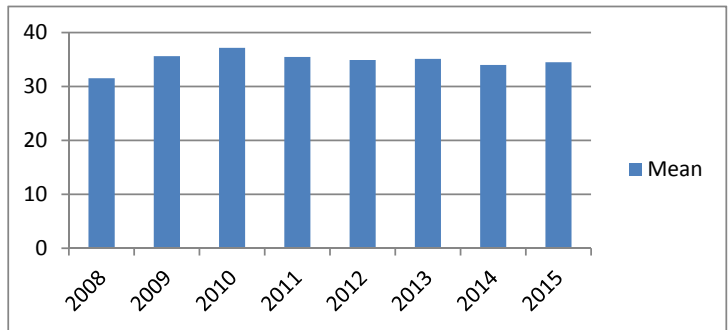
Average Incarceration Length - Schedule VI Drugs: Not < 1/2 Ounce - Standard Offenders

Year	Mean	Median	Standard Deviation	N
2008	17.94	18.00	5.86	557
2009	18.75	21.59	6.86	579
2010	18.71	24.00	6.41	543
2011	18.95	24.00	6.26	592
2012	18.97	24.00	6.05	527
2013	18.90	24.00	6.16	511
2014	19.46	24.00	6.66	408
2015	19.30	24.00	7.03	235



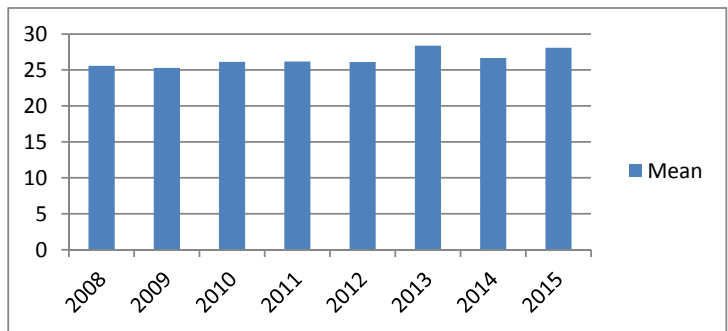
Average Incarceration Length - Schedule VI Drugs: Not < 1/2 Ounce - Multiple Offenders

Year	Mean	Median	Standard Deviation	N
2008	31.52	25.00	10.08	75
2009	35.61	36.00	11.89	61
2010	37.15	36.00	10.28	78
2011	35.46	36.00	10.44	96
2012	34.90	36.00	10.11	96
2013	35.11	36.00	9.87	94
2014	33.98	36.00	10.37	80
2015	34.50	36.00	9.56	76



Average Incarceration Length - Habitual Traffic Offender - All Offenders

Year	Mean	Median	Standard Deviation	N
2008	25.57	24.00	14.11	560
2009	25.29	24.00	14.22	499
2010	26.13	24.00	13.92	477
2011	26.18	24.00	14.72	447
2012	26.10	24.00	14.05	388
2013	28.38	24.00	15.98	406
2014	26.67	24.00	14.92	308
2015	28.09	24.00	14.58	239

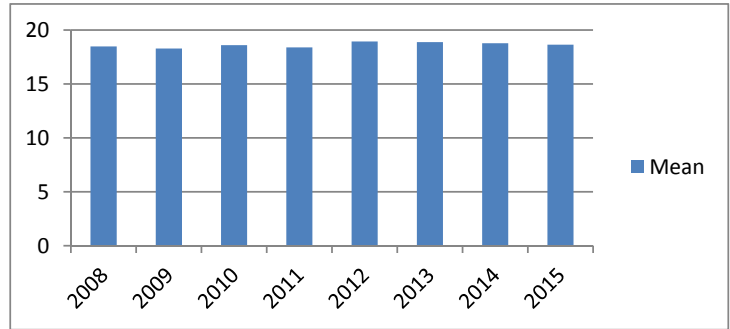


Average Incarceration Lengths in Months by Felony Class and Offense

Note: Column N indicates the number of felony convictions. Individual offenders can have multiple convictions. Incarceration includes life without parole and death sentences. Probation includes sentences to community corrections.

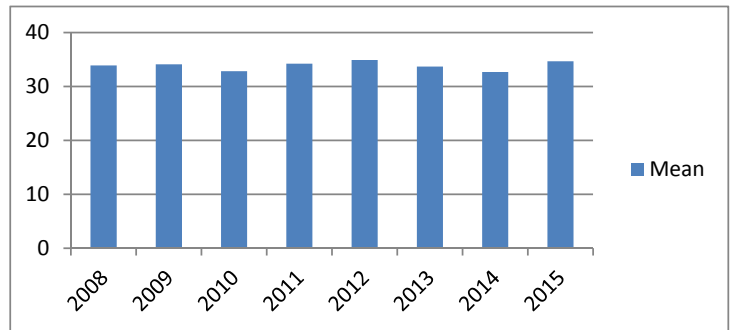
Average Incarceration Length - Habitual Traffic Offender - Standard Offenders

Year	Mean	Median	Standard Deviation	N
2008	18.48	18.00	5.81	372
2009	18.29	18.00	5.84	338
2010	18.59	18.00	6.00	294
2011	18.38	18.00	5.70	287
2012	18.93	24.00	5.63	250
2013	18.87	18.00	6.47	235
2014	18.77	18.00	6.05	196
2015	18.64	18.00	5.53	132



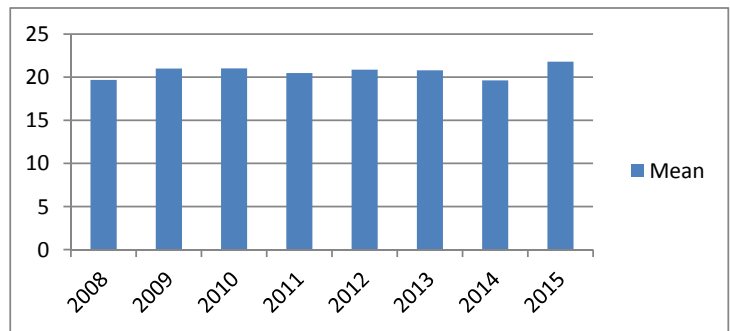
Average Incarceration Length - Habitual Traffic Offender - Multiple Offenders

Year	Mean	Median	Standard Deviation	N
2008	33.90	36.00	9.62	145
2009	34.09	36.00	9.74	127
2010	32.83	36.00	8.78	148
2011	34.20	36.00	9.40	123
2012	34.91	36.00	10.49	115
2013	33.69	36.00	9.25	118
2014	32.66	25.00	10.29	77
2015	34.68	36.00	9.65	83



Average Incarceration Length - Failure to Appear (Felony) - All Offenders

Year	Mean	Median	Standard Deviation	N
2008	19.68	12.00	11.78	378
2009	21.00	12.00	14.05	339
2010	21.01	18.00	13.11	342
2011	20.49	20.00	11.12	375
2012	20.87	18.00	13.11	352
2013	20.78	12.00	12.58	369
2014	19.62	18.00	9.97	303
2015	21.79	18.00	14.18	218

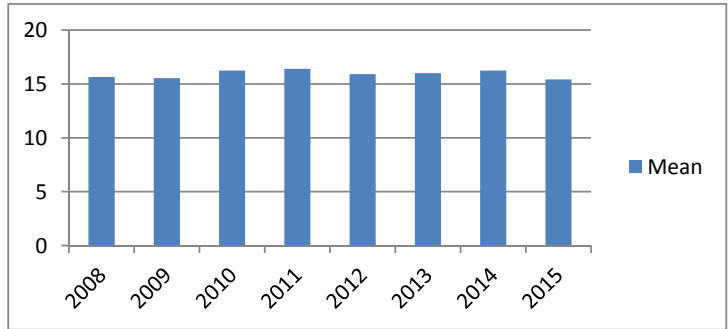


Average Incarceration Lengths in Months by Felony Class and Offense

Note: Column N indicates the number of felony convictions. Individual offenders can have multiple convictions. Incarceration includes life without parole and death sentences. Probation includes sentences to community corrections.

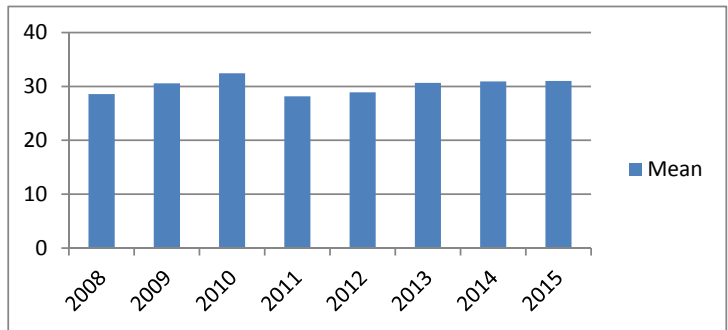
**Average Incarceration Length - Failure to Appear
(Felony) - Standard Offenders**

Year	Mean	Median	Standard Deviation	N
2008	15.64	12.00	5.32	304
2009	15.53	12.00	5.37	263
2010	16.23	12.00	5.62	272
2011	16.40	12.00	5.62	285
2012	15.91	12.00	5.38	268
2013	15.99	12.00	5.73	285
2014	16.23	12.00	5.53	241
2015	15.42	12.00	5.16	156



**Average Incarceration Length - Failure to Appear
(Felony) - Multiple Offenders**

Year	Mean	Median	Standard Deviation	N
2008	28.59	24.00	8.32	55
2009	30.57	24.00	10.41	53
2010	32.45	24.00	10.59	54
2011	28.15	24.00	7.56	73
2012	28.90	24.00	7.77	59
2013	30.65	24.00	10.29	62
2014	30.93	24.00	9.72	58
2015	31.02	24.00	9.22	47



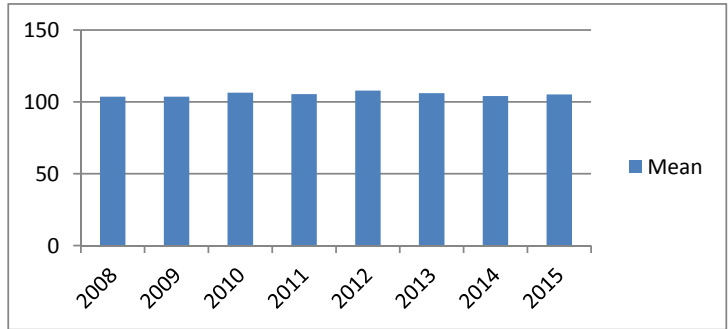
Average Probation Lengths in Months by Felony Class

Note: Column N indicates the number of felony convictions. Individual offenders can have multiple convictions. Incarceration includes life without parole and death sentences. Probation includes sentences to community corrections.

Average Probation Length - Felony Class B - All Offenders

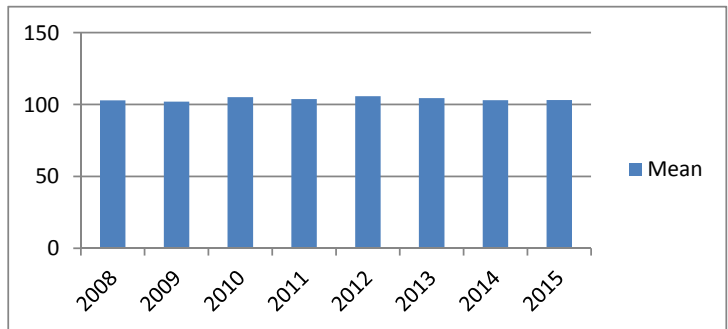
Year	Mean	Median	Standard Deviation	N
2008	103.65	96.00	23.22	578
2009	103.65	96.00	18.70	575
2010	106.33	96.00	23.08	619
2011	105.34	96.00	18.24	658
2012	107.80	96.00	25.99	667
2013	106.00	96.00	18.98	619
2014	104.07	96.00	17.88	701
2015	105.13	96.00	17.30	614

The table for multiple offenders was not included due to low occurrence frequencies.



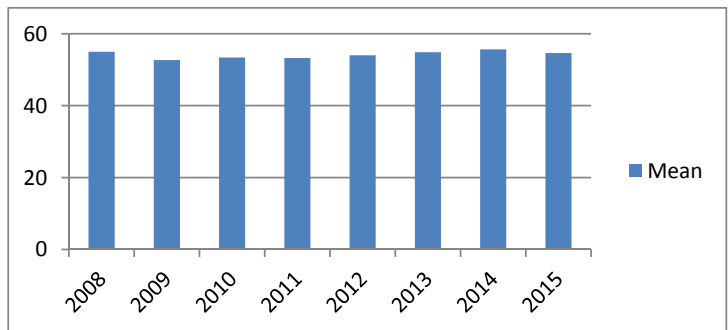
Average Probation Length - Felony Class B - Standard Offenders

Year	Mean	Median	Standard Deviation	N
2008	102.83	96.00	22.29	562
2009	101.93	96.00	15.91	550
2010	105.07	96.00	21.83	596
2011	103.75	96.00	14.37	620
2012	105.74	96.00	23.27	622
2013	104.37	96.00	15.85	586
2014	102.96	96.00	16.37	674
2015	103.13	96.00	14.18	568



Average Probation Length - Class C - All Offenders

Year	Mean	Median	Standard Deviation	N
2008	54.98	48.00	28.70	2,197
2009	52.69	48.00	22.61	2,063
2010	53.39	48.00	21.73	2,268
2011	53.28	48.00	20.86	2,540
2012	54.02	48.00	20.95	2,750
2013	54.85	48.00	22.54	2,871
2014	55.67	48.00	22.91	2,815
2015	54.66	48.00	21.97	3,079

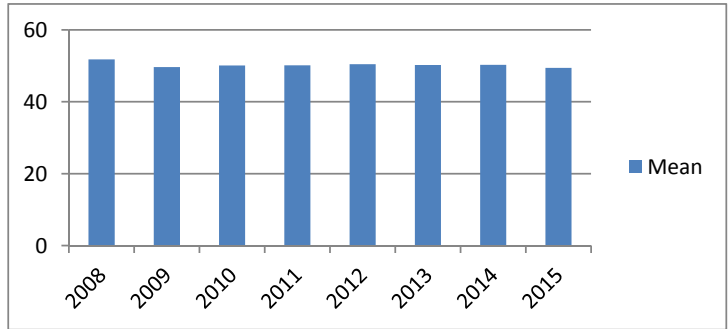


Average Probation Lengths in Months by Felony Class

Note: Column N indicates the number of felony convictions. Individual offenders can have multiple convictions. Incarceration includes life without parole and death sentences. Probation includes sentences to community corrections.

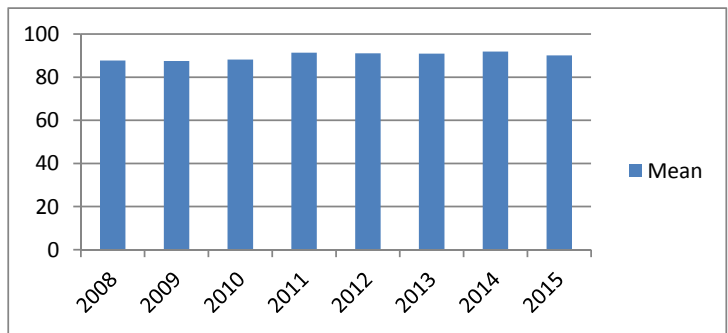
Average Probation Length - Class C - Standard Offenders

Year	Mean	Median	Standard Deviation	N
2008	51.78	48.00	26.44	2,018
2009	49.68	48.00	19.31	1,905
2010	50.08	48.00	18.06	2,076
2011	50.15	48.00	16.96	2,349
2012	50.45	48.00	16.65	2,510
2013	50.23	48.00	17.05	2,570
2014	50.29	48.00	16.67	2,476
2015	49.45	48.00	15.74	2,707



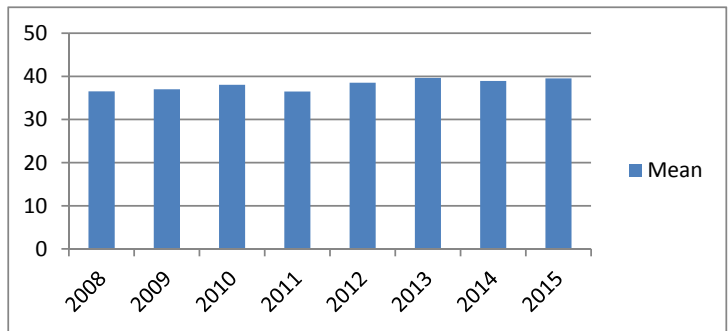
Average Probation Length - Class C - Multiple Offenders

Year	Mean	Median	Standard Deviation	N
2008	87.75	84.00	23.49	154
2009	87.48	84.00	24.99	138
2010	88.19	84.00	24.20	175
2011	91.37	95.82	23.47	178
2012	91.05	96.00	22.93	219
2013	90.92	96.00	21.35	260
2014	91.91	96.00	21.42	298
2015	90.09	96.00	19.55	316



Average Probation Length - Class D - All Offenders

Year	Mean	Median	Standard Deviation	N
2008	36.52	36.00	19.31	2,994
2009	37.00	36.00	18.41	3,152
2010	38.07	36.00	20.10	3,477
2011	36.48	36.00	16.56	3,643
2012	38.51	36.00	21.75	4,109
2013	39.65	36.00	20.43	4,129
2014	38.95	36.00	18.98	4,185
2015	39.55	36.00	19.45	4,071

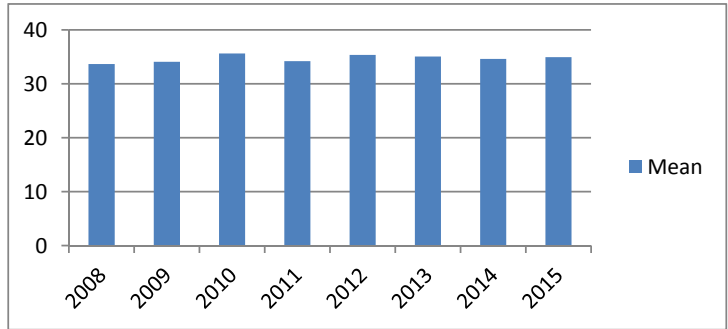


Average Probation Lengths in Months by Felony Class

Note: Column N indicates the number of felony convictions. Individual offenders can have multiple convictions. Incarceration includes life without parole and death sentences. Probation includes sentences to community corrections.

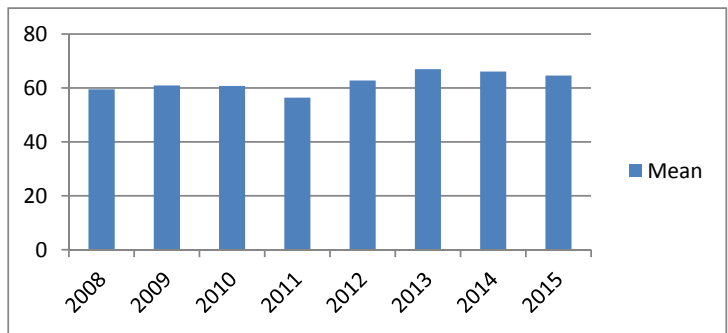
Average Probation Length - Class D - Standard Offenders

Year	Mean	Median	Standard Deviation	N
2008	33.67	25.00	12.79	2,775
2009	34.08	30.00	13.32	2,914
2010	35.62	36.00	17.41	3,229
2011	34.20	36.00	12.99	3,361
2012	35.37	36.00	18.49	3,734
2013	35.06	36.00	14.46	3,634
2014	34.62	36.00	12.53	3,701
2015	34.95	36.00	13.79	3,548



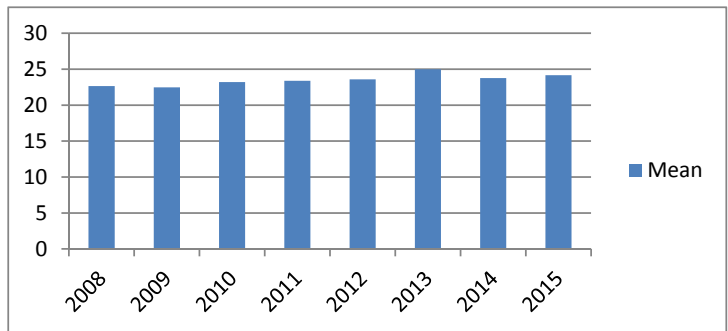
Average Probation Length - Class D - Multiple Offenders

Year	Mean	Median	Standard Deviation	N
2008	59.53	48.00	23.10	168
2009	60.93	48.00	21.36	171
2010	60.75	60.00	16.25	197
2011	56.41	48.00	21.26	236
2012	62.76	60.00	20.21	310
2013	66.98	60.00	19.44	418
2014	66.09	60.00	20.13	408
2015	64.60	60.00	18.67	433



Average Probation Length - Class E - All Offenders

Year	Mean	Median	Standard Deviation	N
2008	22.64	24.00	13.15	4,069
2009	22.46	24.00	12.06	3,942
2010	23.20	24.00	12.38	4,167
2011	23.39	24.00	14.71	3,852
2012	23.60	24.00	12.75	4,029
2013	24.98	24.00	14.71	4,416
2014	23.77	24.00	12.31	4,425
2015	24.18	24.00	12.24	4,394

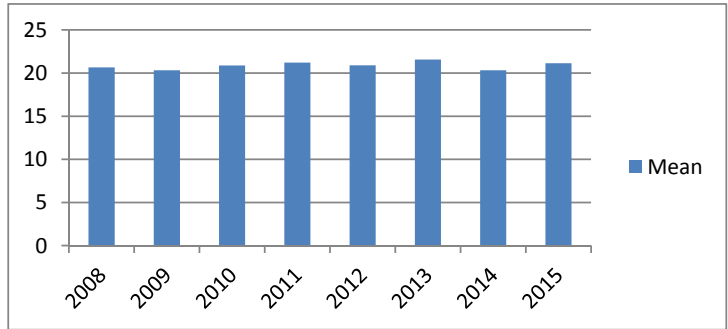


Average Probation Lengths in Months by Felony Class

Note: Column N indicates the number of felony convictions. Individual offenders can have multiple convictions. Incarceration includes life without parole and death sentences. Probation includes sentences to community corrections.

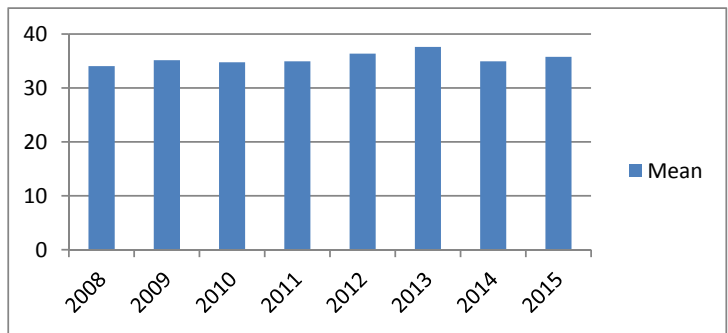
Average Probation Length - Class E - Standard Offenders

Year	Mean	Median	Standard Deviation	N
2008	20.65	24.00	10.08	3,705
2009	20.32	24.00	9.13	3,535
2010	20.87	24.00	9.62	3,667
2011	21.22	24.00	12.61	3,424
2012	20.89	24.00	9.79	3,504
2013	21.57	24.00	11.84	3,710
2014	20.33	24.00	8.43	3,650
2015	21.14	24.00	8.78	3,699



Average Probation Length - Class E - Multiple Offenders

Year	Mean	Median	Standard Deviation	N
2008	34.05	36.00	10.77	272
2009	35.16	36.00	10.05	324
2010	34.77	36.00	10.53	403
2011	34.95	36.00	10.73	366
2012	36.38	36.00	10.48	405
2013	37.62	36.00	10.83	545
2014	34.94	36.00	10.62	605
2015	35.79	36.00	10.49	571



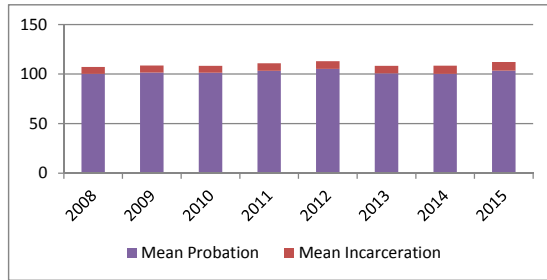
Average Split Sentence Lengths in Months by Felony Class

Note: Column N indicates the number of felony convictions. Individual offenders can have multiple convictions. Incarceration includes life without parole and death sentences. Probation includes sentences to community corrections.

Average Sentence Length - Felony Class B - All Offenders

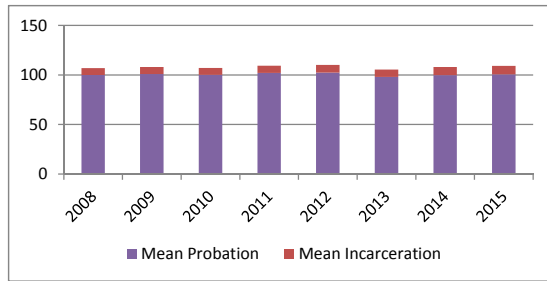
Year	Months of Incarceration				Months of Probation			
	Mean	Median	Standard Deviation	N	Mean	Median	Standard Deviation	N
2008	6.9	6.0	4.6	397	100.3	96.0	21.4	397
2009	7.2	6.0	4.4	411	101.5	96.0	15.8	411
2010	7.0	6.0	4.4	463	101.4	96.0	20.0	463
2011	7.5	6.0	4.3	536	103.4	96.0	22.7	536
2012	7.7	7.0	4.9	506	105.3	96.0	22.2	506
2013	7.6	7.2	4.2	487	100.6	96.0	22.6	487
2014	8.2	9.0	4.0	466	100.3	96.0	17.7	466
2015	8.7	10.0	3.6	464	103.4	96.0	22.5	464

The table for multiple offenders was not included due to low occurrence frequencies.



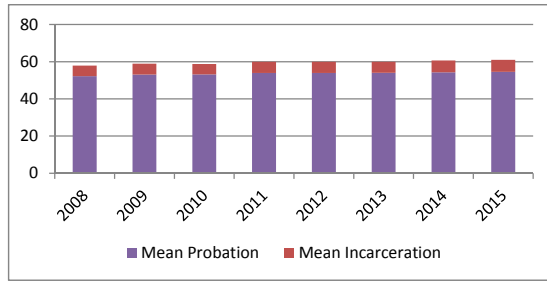
Average Sentence Length - Felony Class B - Standard Offenders

Year	Months of Incarceration				Months of Probation			
	Mean	Median	Standard Deviation	N	Mean	Median	Standard Deviation	N
2008	6.9	6.0	4.6	389	100.0	96.0	21.3	389
2009	7.2	6.0	4.4	404	100.9	96.0	15.0	404
2010	7.0	6.0	4.4	445	100.1	96.0	19.0	445
2011	7.4	6.0	4.3	523	102.0	96.0	20.7	523
2012	7.7	6.3	5.0	469	102.4	96.0	18.5	469
2013	7.6	6.2	4.2	469	97.9	96.0	15.1	469
2014	8.2	9.0	4.0	457	99.8	96.0	17.1	457
2015	8.6	10.0	3.7	442	100.6	96.0	15.7	442



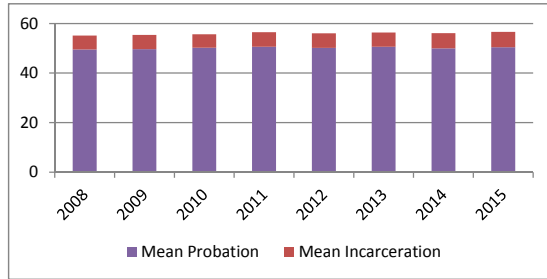
Average Sentence Length - Class C - All Offenders

Year	Months of Incarceration				Months of Probation			
	Mean	Median	Standard Deviation	N	Mean	Median	Standard Deviation	N
2008	5.7	4.5	4.4	1,255	52.2	48.0	22.2	1,255
2009	5.9	5.0	4.3	1,276	53.1	48.0	22.2	1,276
2010	5.6	4.9	4.2	1,453	53.2	48.0	22.9	1,453
2011	6.1	5.9	4.2	1,622	53.9	48.0	21.9	1,622
2012	6.0	5.5	4.1	1,634	53.9	48.0	21.8	1,634
2013	5.9	5.3	4.1	1,658	54.1	48.0	21.3	1,658
2014	6.4	6.0	4.2	1,632	54.3	48.0	21.8	1,632
2015	6.5	6.0	4.1	1,674	54.5	48.0	21.1	1,674



Average Sentence Length - Class C - Standard Offenders

Year	Months of Incarceration				Months of Probation			
	Mean	Median	Standard Deviation	N	Mean	Median	Standard Deviation	N
2008	5.6	4.0	4.3	1,167	49.6	48.0	19.5	1,167
2009	5.7	4.9	4.2	1,169	49.7	48.0	18.2	1,169
2010	5.4	4.0	4.2	1,340	50.2	48.0	19.9	1,340
2011	5.9	5.0	4.2	1,500	50.6	48.0	17.8	1,500
2012	5.9	4.9	4.1	1,495	50.2	48.0	17.4	1,495
2013	5.7	4.9	4.0	1,507	50.6	48.0	18.0	1,507
2014	6.1	5.9	4.1	1,458	50.0	48.0	16.9	1,458
2015	6.2	5.9	4.0	1,495	50.4	48.0	16.2	1,495

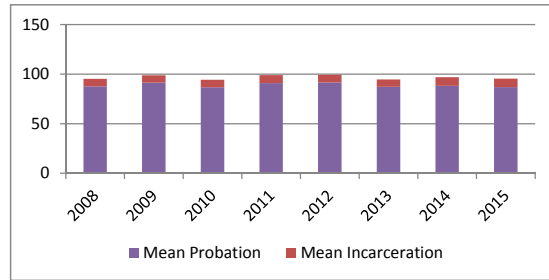


Average Split Sentence Lengths in Months by Felony Class

Note: Column N indicates the number of felony convictions. Individual offenders can have multiple convictions. Incarceration includes life without parole and death sentences. Probation includes sentences to community corrections.

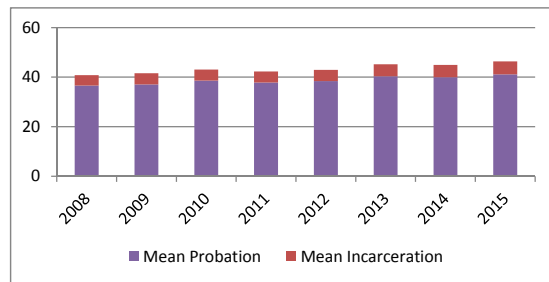
Average Sentence Length - Class C - Multiple Offenders

Year	Months of Incarceration				Months of Probation			
	Mean	Median	Standard Deviation	N	Mean	Median	Standard Deviation	N
2008	7.5	7.0	5.0	80	87.8	84.0	22.2	80
2009	7.4	7.9	4.7	100	91.4	96.0	24.1	100
2010	7.5	8.4	4.5	97	86.7	84.0	21.1	97
2011	8.1	9.0	4.1	106	91.0	96.0	22.4	106
2012	7.8	9.0	4.2	127	91.6	93.2	20.5	127
2013	7.4	6.0	4.2	140	87.2	90.0	21.1	140
2014	8.6	12.0	4.1	156	88.3	84.0	22.0	156
2015	8.6	10.0	3.9	155	86.9	87.0	21.4	155



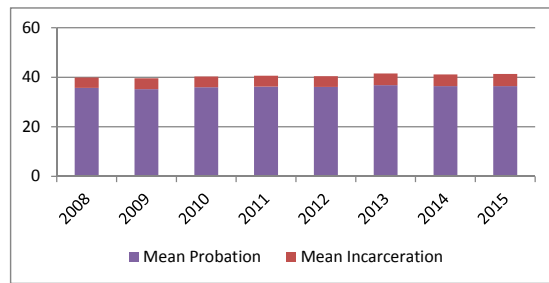
Average Sentence Length - Class D - All Offenders

Year	Months of Incarceration				Months of Probation			
	Mean	Median	Standard Deviation	N	Mean	Median	Standard Deviation	N
2008	4.2	3.0	3.4	1,395	36.6	36.0	18.3	1,395
2009	4.5	3.0	3.8	1,442	37.1	36.0	17.4	1,442
2010	4.4	3.0	3.6	1,652	38.6	36.0	18.8	1,652
2011	4.5	3.0	3.7	1,737	37.8	36.0	17.3	1,737
2012	4.5	3.2	3.6	1,692	38.4	36.0	19.3	1,692
2013	4.9	3.9	3.8	1,789	40.3	36.0	20.3	1,789
2014	5.0	3.9	3.8	1,806	40.0	36.0	17.9	1,806
2015	5.3	4.0	3.8	1,498	41.1	36.0	21.5	1,498



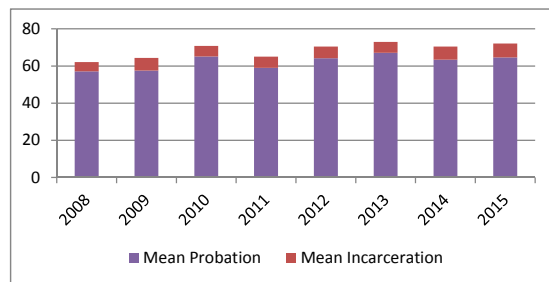
Average Sentence Length - Class D - Standard Offenders

Year	Months of Incarceration				Months of Probation			
	Mean	Median	Standard Deviation	N	Mean	Median	Standard Deviation	N
2008	4.2	3.0	3.4	1,344	35.7	36.0	17.6	1,344
2009	4.4	3.0	3.7	1,365	35.2	36.0	14.4	1,365
2010	4.3	3.0	3.6	1,531	36.0	36.0	15.6	1,531
2011	4.4	3.0	3.7	1,635	36.3	36.0	15.7	1,635
2012	4.4	3.0	3.5	1,571	36.1	36.0	16.9	1,571
2013	4.7	3.3	3.7	1,625	36.8	36.0	16.0	1,625
2014	4.7	3.9	3.6	1,607	36.4	36.0	13.6	1,607
2015	4.9	3.9	3.7	1,271	36.4	36.0	17.5	1,271



Average Sentence Length - Class D - Multiple Offenders

Year	Months of Incarceration				Months of Probation			
	Mean	Median	Standard Deviation	N	Mean	Median	Standard Deviation	N
2008	5.0	4.0	3.7	44	57.2	48.0	18.5	44
2009	6.8	6.0	4.2	60	57.6	48.0	19.8	60
2010	5.7	4.9	3.7	101	65.1	66.0	18.7	101
2011	6.0	5.1	4.2	92	59.0	53.0	18.3	92
2012	6.3	6.0	4.1	110	64.2	60.0	18.0	110
2013	5.8	4.9	4.0	123	67.1	68.0	20.2	123
2014	7.0	6.0	4.4	173	63.4	60.0	17.1	173
2015	7.5	6.0	3.9	196	64.6	60.0	20.5	196

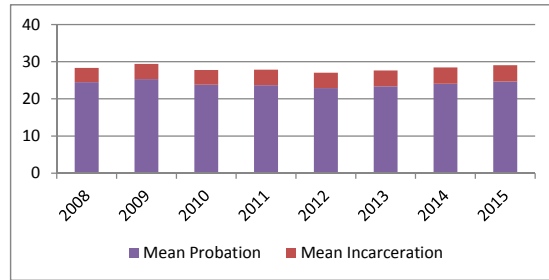


Average Split Sentence Lengths in Months by Felony Class

Note: Column N indicates the number of felony convictions. Individual offenders can have multiple convictions. Incarceration includes life without parole and death sentences. Probation includes sentences to community corrections.

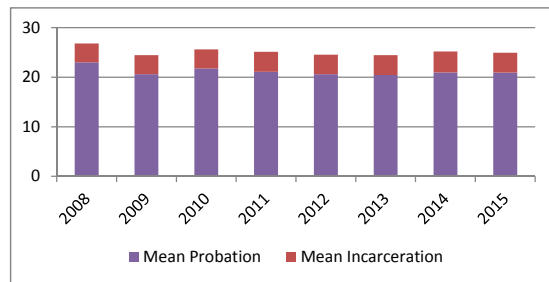
Average Sentence Length - Class E - All Offenders

Year	Months of Incarceration				Months of Probation			
	Mean	Median	Standard Deviation	N	Mean	Median	Standard Deviation	N
2008	3.8	3.0	3.1	2,136	24.5	23.7	16.7	2,136
2009	4.1	3.3	3.0	2,088	25.3	23.0	20.5	2,088
2010	4.0	3.0	3.0	1,898	23.8	23.9	15.0	1,898
2011	4.2	3.0	3.3	1,949	23.7	24.0	13.7	1,949
2012	4.1	3.0	3.1	1,859	22.9	23.0	13.4	1,859
2013	4.3	3.0	3.3	1,828	23.4	23.0	15.4	1,828
2014	4.4	3.6	3.3	1,734	24.0	24.0	14.0	1,734
2015	4.4	3.5	3.3	1,786	24.7	24.0	14.2	1,786



Average Sentence Length - Class E - Standard Offenders

Year	Months of Incarceration				Months of Probation			
	Mean	Median	Standard Deviation	N	Mean	Median	Standard Deviation	N
2008	3.8	3.0	3.0	1,952	23.0	23.0	15.9	1,952
2009	3.8	3.0	2.9	1,837	20.6	22.0	10.0	1,837
2010	3.8	3.0	2.9	1,692	21.8	22.0	13.7	1,692
2011	4.0	3.0	3.1	1,683	21.1	22.0	11.0	1,683
2012	3.9	3.0	2.9	1,640	20.6	21.0	11.3	1,640
2013	4.0	3.0	3.1	1,600	20.5	22.0	11.1	1,600
2014	4.2	3.0	3.1	1,469	21.0	23.0	11.0	1,469
2015	4.0	3.0	3.1	1,458	20.9	22.9	10.6	1,458



Average Sentence Length - Class E - Multiple Offenders

Year	Months of Incarceration				Months of Probation			
	Mean	Median	Standard Deviation	N	Mean	Median	Standard Deviation	N
2008	4.3	3.0	3.2	153	36.5	36.0	15.6	153
2009	5.7	6.0	3.0	215	60.3	48.0	39.9	215
2010	4.6	3.9	3.4	167	36.0	36.0	12.4	167
2011	4.8	3.9	3.8	215	34.9	36.0	13.2	215
2012	5.6	4.9	3.9	174	35.8	36.0	12.2	174
2013	5.8	6.0	3.6	165	35.8	36.0	11.4	165
2014	5.2	4.9	3.5	210	35.8	36.0	12.7	210
2015	6.1	5.0	3.8	259	36.3	36.0	12.8	259

