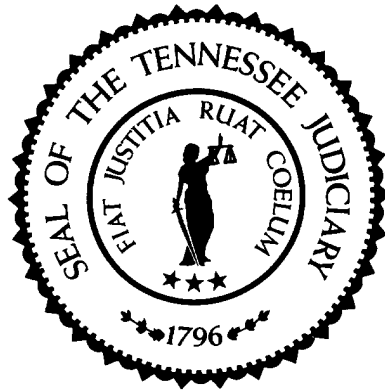


# Sentencing Practices in Tennessee



Administrative Office of the Courts

Information for Cases Sentenced Between  
July 1, 2009 and June 30, 2017

TDOC Data Extracted: May 2018  
Released: May 2018

## Sentencing Practices in Tennessee Contents

Methodology	1
Sentence Type Information	
Class A	3
Class B	3
Class C	4
Class D	4
Class E	4
Average Incarceration Lengths in Months	
Class A	5
Rape of Child	6
Second Degree Murder	6
Especially Aggravated Kidnapping	7
Class B	8
Schedule II Cocaine	9
Aggravated Robbery	10
Aggravated Sexual Battery	11
Class C	11
Aggravated Burglary	12
Aggravated Assault	13
Schedule II Cocaine < ½ Gram	14
Schedule II Drugs: Max \$100,000 Fine	15
Class D	16
Theft: \$1,000 to \$10,000	17
Burglary Other Than Habitation	18
Identity Theft	19
Obtain Drugs by Fraud	20
Class E	21
Forgery: Up to \$1,000	22
Burglary: Auto	23
Theft: \$500 to \$1,000	24
Schedule VI Drugs: Not < ½ Ounce	25
Habitual Traffic Offender	26
Failure to Appear (Felony)	27
Average Probation Lengths in Months	
Class B	29
Class C	28
Class D	30
Class E	31
Average Split Sentence Lengths in Months	
Class B	33
Class C	33
Class D	34
Class E	35

## Methodology

The data used in evaluating sentencing practices comes from the Tennessee Department of Correction (TDOC). TDOC data was selected because individual offense data is captured by the department. Each offense sentence is recorded individually, even in cases of multiple offense convictions, eliminating the potential confusion in determining sentence lengths created by these multiple offense convictions. To establish a baseline for comparison purposes, data from multiple years was queried. The initial focus of this analysis consisted of cases where the defendants received incarceration only, either in a TDOC facility or a local jail, however alternative sentence information was gathered as well. This data is not a sample, but is the entire population of sentences captured by the TDOC during the time frame analyzed.

Sentence lengths will be reported for standard offenders, multiple offenders and for all offender types as a group. Standard and multiple offender defendant types were chosen because they comprise over 90% of all sentences in Tennessee.

Specific offenses were included in analysis first by choosing the top three most frequently occurring offenses in each felony class, then by a combination of occurrence frequency, overall impact on sentence length and by the increasing in frequency of the occurrence of the offense (i.e. the offense is happening in increasing amounts, but was not historically happening in large numbers). The following offenses make nearly 70% of convicted offenses and are included in the statistic table report.

- Class A
  - Rape of a Child
  - Second Degree Murder
  - Especially Aggravated Kidnapping
- Class B
  - Schedule II Drugs: Cocaine
  - Aggravated Robbery
  - Aggravated Sexual Battery
- Class C
  - Aggravated Burglary
  - Aggravated Assault
  - Schedule II Drugs: Cocaine < 1/2 Gram
  - Schedule II Drugs: Up to \$100,000 Fine
- Class D
  - Theft: \$1,000 to \$10,000
  - Burglary: Other than Habitation or Auto
  - Identity Theft
  - Obtain Drugs by Fraud
- Class E
  - Forgery: Up to \$1,000
  - Burglary: Auto
  - Theft: \$500 to \$1,000
  - Schedule VI Drugs: Not Less than ½ Ounce
  - Habitual Traffic Offender
  - Failure to Appear (Felony)

Data for each felony class and defendant type (standard, multiple and all) are presented as well. The tables for the offenses listed and for the felony classes display the mean and median sentence lengths in months, the standard deviation and the number of convictions for each year reported.

**Note**

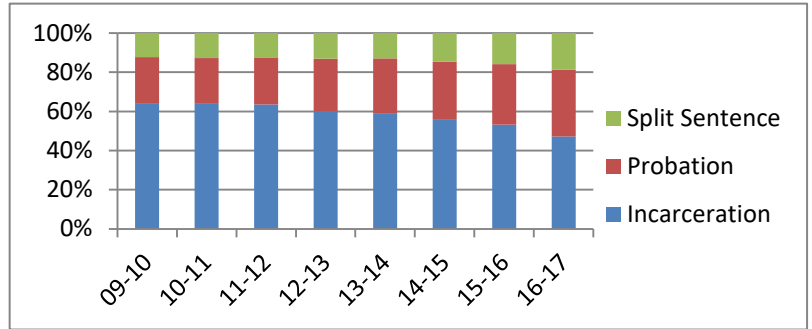
The numbers presented here and in previous reports may vary for the same years. Discrepancies are due in part to late reporting to the Tennessee Department of Corrections and parole violations over time. Also, due to late reporting to TDOC, the total population in recent years may not be included in the analysis at the time of publication.

# Sentence Type Information

Note: Column N Indicates the number of felony convictions. Individual offenders can have multiple convictions. Incarceration includes life without parole and death sentences. Probation includes sentences to community corrections.

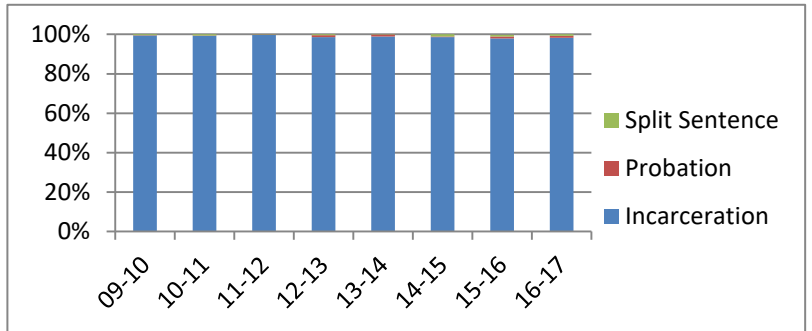
**Percent of Sentence Type - All Felony Classes - All Offenders**

Fiscal Year	Incarceration	Probation	Split Sentence	N
	Percent	Percent	Percent	
09-10	63.9%	23.8%	12.3%	41,941
10-11	63.9%	23.4%	12.8%	43,661
11-12	63.5%	24.0%	12.4%	43,313
12-13	60.2%	26.7%	13.1%	40,570
13-14	59.1%	28.0%	12.9%	37,697
14-15	55.7%	29.7%	14.6%	34,382
15-16	53.2%	30.9%	15.9%	34,672
16-17	47.2%	34.2%	18.6%	34,252



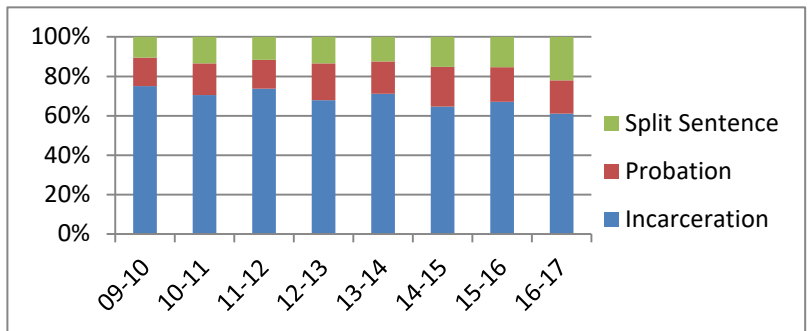
**Percent of Sentence Type - Felony Class A - All Offenders**

Fiscal Year	Incarceration	Probation	Split Sentence	N
	Percent	Percent	Percent	
09-10	99.4%	0.1%	0.4%	670
10-11	99.2%	0.2%	0.6%	528
11-12	99.7%	0.2%	0.2%	650
12-13	98.6%	1.0%	0.3%	582
13-14	99.0%	0.9%	0.2%	588
14-15	98.5%	0.4%	1.0%	481
15-16	98.0%	0.9%	0.9%	557
16-17	98.3%	0.9%	0.7%	545



**Percent of Sentence Type - Felony Class B - All Offenders**

Fiscal Year	Incarceration	Probation	Split Sentence	N
	Percent	Percent	Percent	
09-10	75.1%	14.4%	10.5%	3,751
10-11	70.5%	16.1%	13.4%	3,846
11-12	73.8%	14.6%	11.6%	3,872
12-13	67.9%	18.6%	13.5%	3,458
13-14	71.2%	16.4%	12.4%	3,086
14-15	64.6%	20.1%	15.3%	3,008
15-16	67.1%	17.5%	15.4%	3,177
16-17	61.1%	16.9%	22.1%	3,551

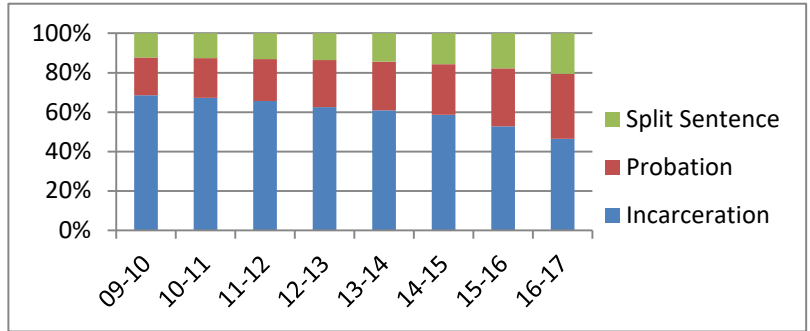


# Sentence Type Information

Note: Column N Indicates the number of felony convictions. Individual offenders can have multiple convictions. Incarceration includes life without parole and death sentences. Probation includes sentences to community corrections.

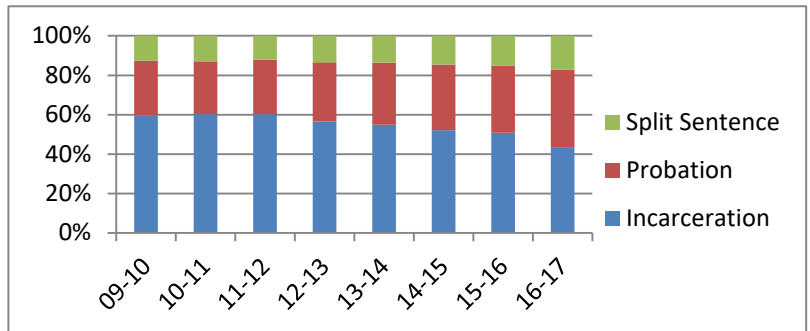
## Percent of Sentence Type - Felony Class C - All Offenders

Fiscal Year	Incarceration	Probation	Split Sentence	N
	Percent	Percent	Percent	
09-10	68.5%	19.3%	12.2%	10,757
10-11	67.3%	20.1%	12.6%	11,654
11-12	65.6%	21.3%	13.1%	11,631
12-13	62.6%	23.7%	13.6%	10,561
13-14	60.8%	24.8%	14.4%	10,048
14-15	58.6%	25.7%	15.7%	9,123
15-16	52.8%	29.3%	17.9%	9,579
16-17	46.4%	33.1%	20.6%	9,800



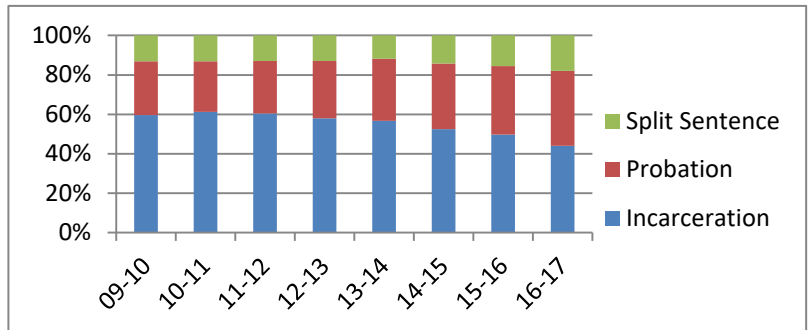
## Percent of Sentence Type - Felony Class D - All Offenders

Fiscal Year	Incarceration	Probation	Split Sentence	N
	Percent	Percent	Percent	
09-10	59.6%	27.8%	12.6%	12,113
10-11	60.3%	26.8%	12.9%	12,731
11-12	60.2%	27.6%	12.2%	13,175
12-13	56.5%	30.1%	13.3%	12,308
13-14	55.0%	31.5%	13.6%	11,356
14-15	52.1%	33.3%	14.6%	10,441
15-16	50.8%	34.0%	15.3%	9,899
16-17	43.5%	39.3%	17.2%	9,429



## Percent of Sentence Type - Felony Class E - All Offenders

Fiscal Year	Incarceration	Probation	Split Sentence	N
	Percent	Percent	Percent	
09-10	59.7%	27.3%	13.0%	14,650
10-11	61.2%	25.8%	13.0%	14,902
11-12	60.4%	26.6%	12.9%	13,985
12-13	57.9%	29.1%	12.9%	13,661
13-14	56.6%	31.6%	11.8%	12,619
14-15	52.5%	33.2%	14.3%	11,329
15-16	49.7%	34.7%	15.6%	11,460
16-17	43.9%	38.2%	17.9%	10,927

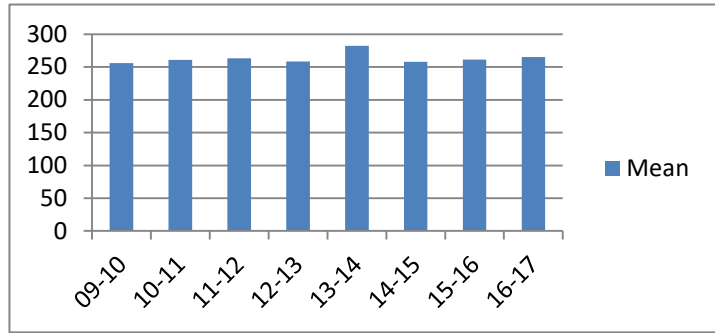


## Average Incarceration Lengths in Months by Felony Class and Offense

Note: Column N indicates the number of felony convictions. Individual offenders can have multiple convictions. Incarceration includes life without parole and death sentences. Probation includes sentences to community corrections.

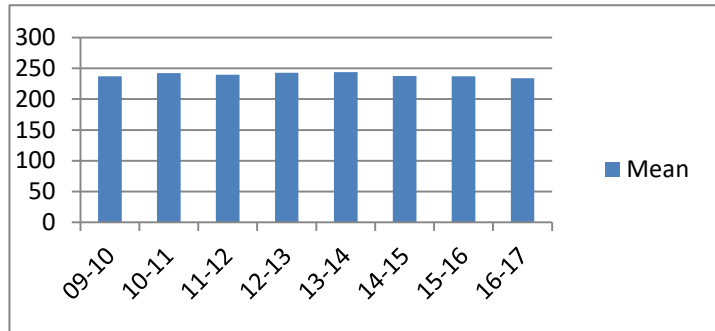
**Average Incarceration Length - Class A - All Offenders**

Fiscal Year	Mean	Median	Standard Deviation	N
09-10	255.83	240.00	88.02	663
10-11	260.66	240.00	89.80	522
11-12	263.03	240.00	97.19	646
12-13	258.48	240.00	83.17	571
13-14	282.38	264.00	117.36	582
14-15	258.01	240.00	89.33	473
15-16	261.41	240.00	93.59	545
16-17	265.26	240.00	96.27	532



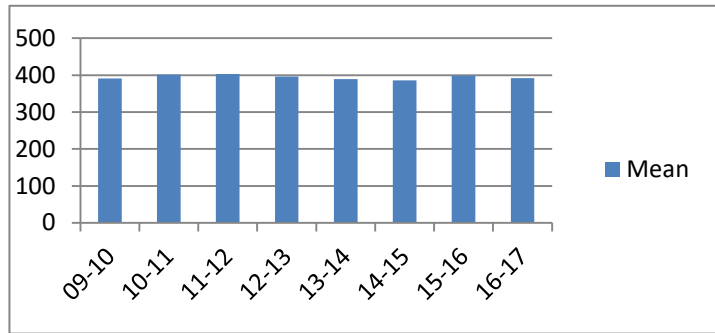
**Average Incarceration Length - Class A - Standard Offenders**

Fiscal Year	Mean	Median	Standard Deviation	N
09-10	237.01	240.00	50.80	540
10-11	242.23	240.00	49.40	430
11-12	240.00	240.00	48.23	496
12-13	242.86	240.00	49.94	476
13-14	243.64	240.00	49.02	421
14-15	237.48	240.00	53.44	372
15-16	237.00	240.00	52.92	430
16-17	234.12	240.00	51.41	409



**Average Incarceration Length - Class A - Multiple Offenders**

Fiscal Year	Mean	Median	Standard Deviation	N
09-10	391.07	384.00	67.64	73
10-11	401.19	396.00	62.50	52
11-12	403.36	384.00	56.59	75
12-13	396.42	420.00	86.35	57
13-14	389.06	360.00	76.91	102
14-15	385.97	384.00	104.49	67
15-16	398.76	384.00	68.69	76
16-17	391.80	360.00	54.86	90

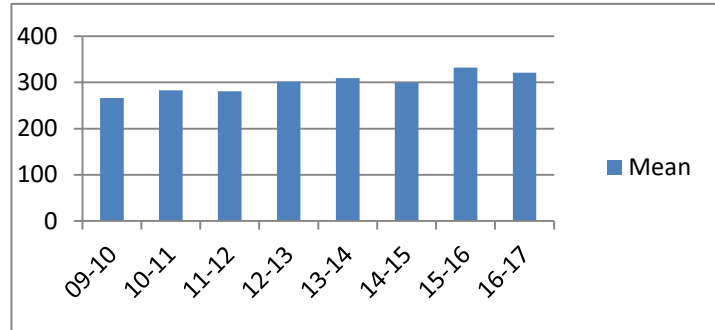


## Average Incarceration Lengths in Months by Felony Class and Offense

Note: Column N indicates the number of felony convictions. Individual offenders can have multiple convictions. Incarceration includes life without parole and death sentences. Probation includes sentences to community corrections.

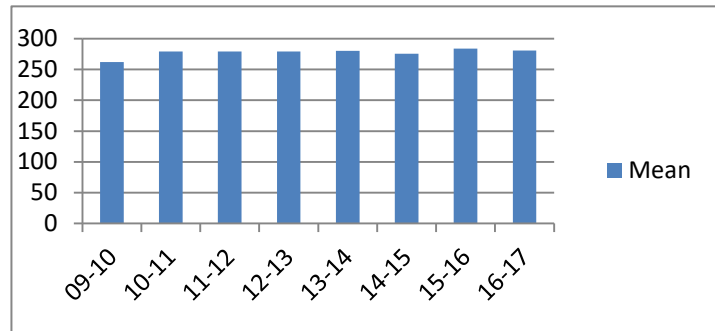
### Average Incarceration Length - Rape of a Child - All Offenders

Fiscal Year	Mean	Median	Standard Deviation	N
09-10	266.60	300.00	49.27	129
10-11	283.13	300.00	47.07	90
11-12	280.99	300.00	41.09	101
12-13	301.93	300.00	66.23	81
13-14	309.51	300.00	62.40	111
14-15	299.68	300.00	63.47	75
15-16	332.40	300.00	92.71	70
16-17	321.15	300.00	66.83	118



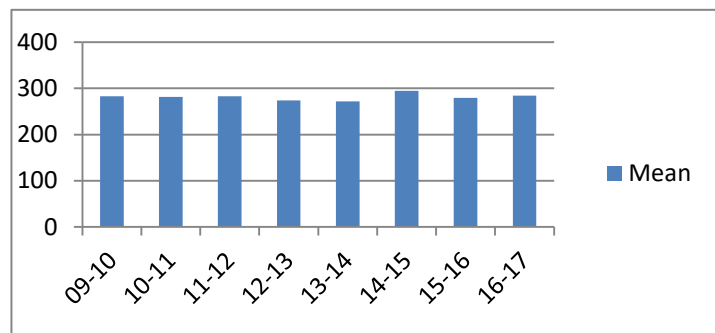
### Average Incarceration Length - Rape of a Child - Standard Offenders

Fiscal Year	Mean	Median	Standard Deviation	N
09-10	262.05	300.00	45.79	123
10-11	279.07	300.00	30.66	84
11-12	279.00	300.00	36.08	100
12-13	279.40	300.00	42.49	67
13-14	280.31	300.00	41.12	78
14-15	275.58	300.00	42.24	57
15-16	283.81	300.00	33.01	43
16-17	280.56	300.00	41.54	71



### Average Incarceration Length - Second Degree Murder - All Offenders

Fiscal Year	Mean	Median	Standard Deviation	N
09-10	283.23	252.00	96.30	127
10-11	281.39	255.00	96.38	108
11-12	283.02	240.00	102.48	118
12-13	274.19	264.00	90.69	83
13-14	271.87	264.00	73.68	93
14-15	294.78	300.00	104.05	77
15-16	279.27	240.00	96.97	111
16-17	284.00	240.00	96.37	105



low occurrence frequencies.

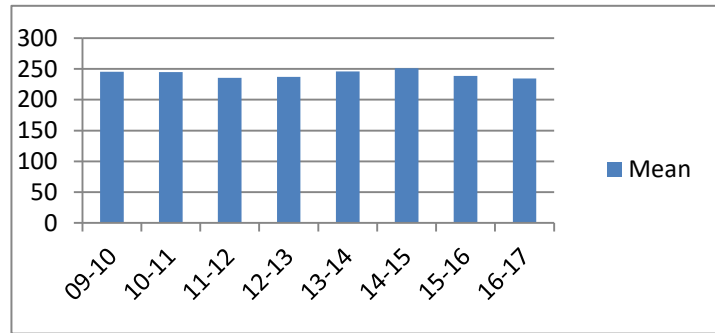


## Average Incarceration Lengths in Months by Felony Class and Offense

Note: Column N indicates the number of felony convictions. Individual offenders can have multiple convictions. Incarceration includes life without parole and death sentences. Probation includes sentences to community corrections.

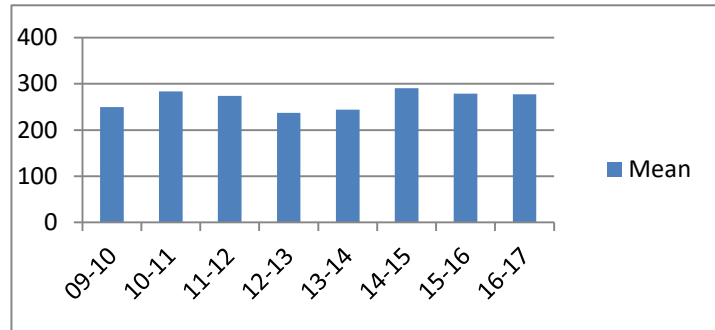
### Average Incarceration Length - Second Degree Murder - Standard Offenders

Fiscal Year	Mean	Median	Standard Deviation	N
09-10	245.66	240.00	44.98	89
10-11	244.88	240.00	43.00	75
11-12	235.67	240.00	44.38	79
12-13	237.19	240.00	49.31	62
13-14	246.08	240.00	47.12	73
14-15	251.25	240.00	44.72	48
15-16	238.52	240.00	44.74	79
16-17	234.40	240.00	46.74	75



### Average Incarceration Length - Especially Aggravated Kidnapping - All Offenders

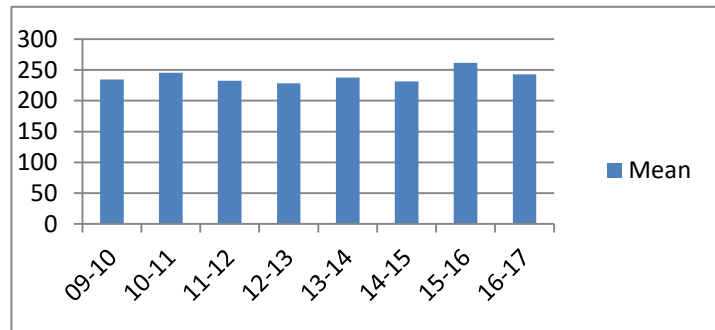
Fiscal Year	Mean	Median	Standard Deviation	N
09-10	249.54	240.00	100.85	56
10-11	283.35	264.00	106.03	49
11-12	274.16	240.00	117.01	88
12-13	237.26	240.00	67.66	68
13-14	243.86	240.00	88.41	42
14-15	290.57	264.00	117.33	35
15-16	278.78	300.00	100.93	67
16-17	277.69	240.00	135.07	39



low occurrence frequencies.

### Average Incarceration Length - Especially Aggravated Kidnapping - Standard Offenders

Fiscal Year	Mean	Median	Standard Deviation	N
09-10	234.55	240.00	50.61	44
10-11	245.27	240.00	48.30	41
11-12	232.21	240.00	45.17	67
12-13	228.20	240.00	46.76	61
13-14	237.79	240.00	44.19	38
14-15	231.36	240.00	53.28	25
15-16	261.80	300.00	56.78	60
16-17	243.09	240.00	38.76	35

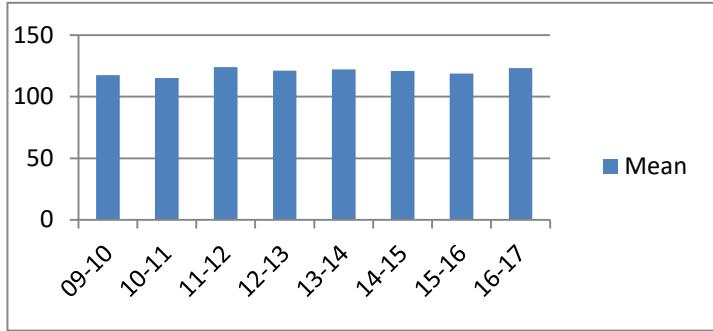


## Average Incarceration Lengths in Months by Felony Class and Offense

Note: Column N indicates the number of felony convictions. Individual offenders can have multiple convictions. Incarceration includes life without parole and death sentences. Probation includes sentences to community corrections.

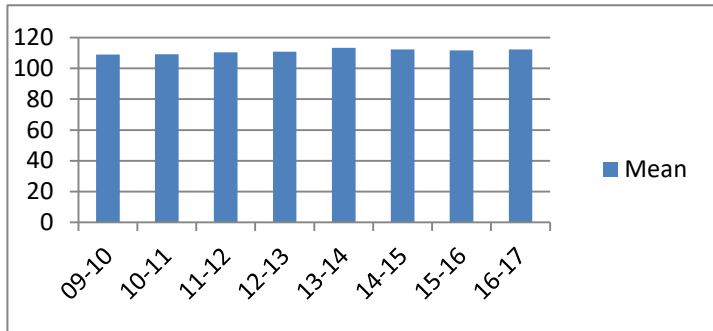
### Average Incarceration Length - Felony Class B - All Offenders

Fiscal Year	Mean	Median	Standard Deviation	N
09-10	117.62	96.00	38.99	2,809
10-11	115.19	96.00	34.30	2,711
11-12	124.11	108.00	44.65	2,855
12-13	121.27	108.00	41.63	2,348
13-14	122.33	120.00	40.26	2,197
14-15	120.97	108.00	36.78	1,944
15-16	118.90	108.00	36.78	2,130
16-17	123.32	120.00	39.71	2,167



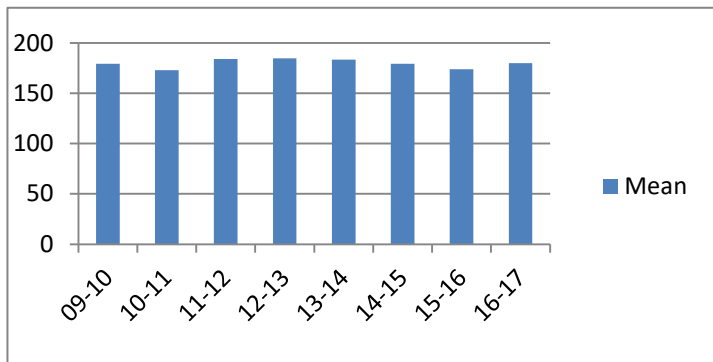
### Average Incarceration Length - Felony Class B - Standard Offenders

Fiscal Year	Mean	Median	Standard Deviation	N
09-10	109.06	96.00	19.59	2,281
10-11	109.19	96.00	18.11	2,232
11-12	110.51	96.00	20.05	2,237
12-13	110.78	96.00	18.69	1,977
13-14	113.26	108.00	20.94	1,870
14-15	112.24	108.00	20.11	1,641
15-16	111.79	108.00	19.06	1,766
16-17	112.26	108.00	20.30	1,774



### Average Incarceration Length - Felony Class B - Multiple Offenders

Fiscal Year	Mean	Median	Standard Deviation	N
09-10	179.48	180.00	37.81	288
10-11	172.90	168.00	37.08	218
11-12	184.06	180.00	35.47	409
12-13	184.68	180.00	42.90	237
13-14	183.34	180.00	40.27	196
14-15	179.31	180.00	42.94	226
15-16	173.92	180.00	34.34	219
16-17	180.00	180.00	40.81	301

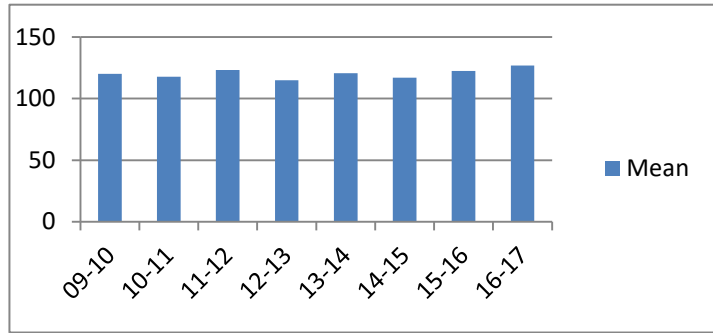


## Average Incarceration Lengths in Months by Felony Class and Offense

Note: Column N indicates the number of felony convictions. Individual offenders can have multiple convictions. Incarceration includes life without parole and death sentences. Probation includes sentences to community corrections.

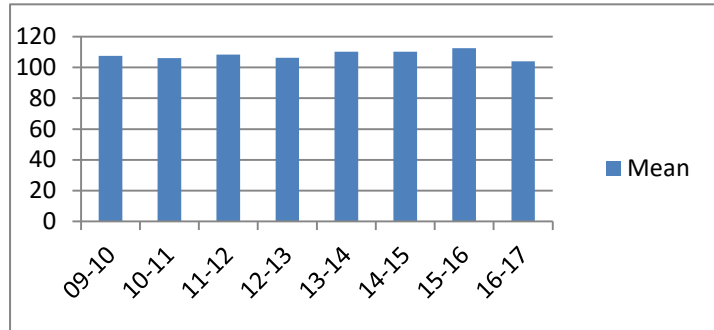
### Average Incarceration Length - Schedule II Cocaine - All Offenders

Fiscal Year	Mean	Median	Standard Deviation	N
09-10	120.06	96.00	44.87	648
10-11	117.74	96.00	36.72	535
11-12	123.33	108.00	46.63	542
12-13	114.96	96.00	30.72	452
13-14	120.72	108.00	37.34	364
14-15	117.07	108.00	32.69	296
15-16	122.54	120.00	36.49	186
16-17	126.93	96.00	48.22	158



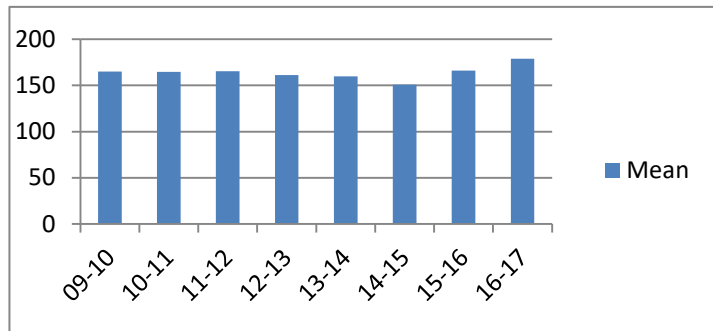
### Average Incarceration Length - Schedule II Cocaine - Standard Offenders

Fiscal Year	Mean	Median	Standard Deviation	N
09-10	107.52	96.00	20.85	537
10-11	105.98	96.00	16.49	443
11-12	108.34	96.00	21.32	439
12-13	106.29	96.00	18.11	375
13-14	110.22	96.00	19.77	300
14-15	110.19	96.00	20.48	252
15-16	112.47	108.00	19.70	153
16-17	104.07	96.00	17.06	110



### Average Incarceration Length - Schedule II Cocaine - Multiple Offenders

Fiscal Year	Mean	Median	Standard Deviation	N
09-10	165.10	144.00	41.92	91
10-11	164.59	156.00	33.33	74
11-12	165.25	144.00	35.08	83
12-13	161.21	144.00	38.86	68
13-14	160.00	144.00	31.54	51
14-15	150.83	144.00	40.75	36
15-16	166.15	174.00	38.35	26
16-17	178.83	180.00	42.15	41

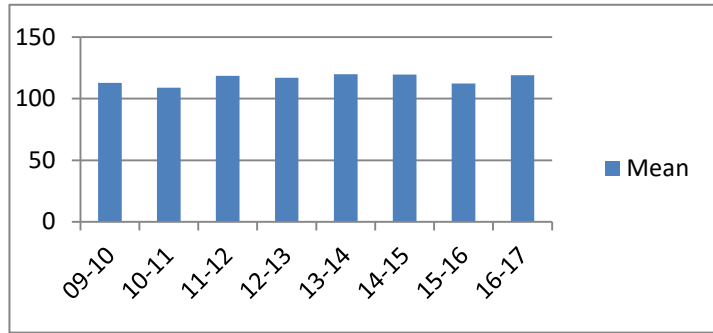


## Average Incarceration Lengths in Months by Felony Class and Offense

Note: Column N indicates the number of felony convictions. Individual offenders can have multiple convictions. Incarceration includes life without parole and death sentences. Probation includes sentences to community corrections.

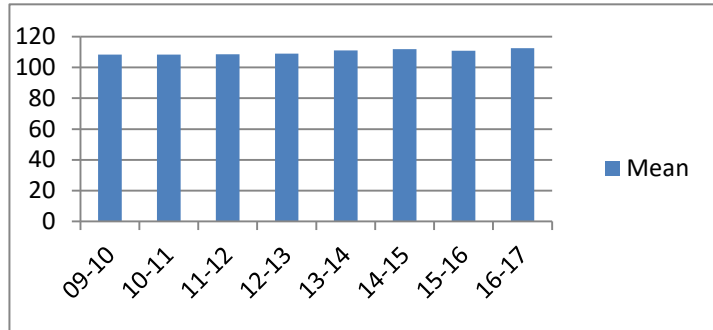
### Average Incarceration Length - Aggravated Robbery - All Offenders

Fiscal Year	Mean	Median	Standard Deviation	N
09-10	112.87	96.00	36.56	906
10-11	108.88	96.00	30.01	748
11-12	118.52	96.00	48.25	638
12-13	117.04	96.00	42.07	508
13-14	119.76	96.00	42.62	500
14-15	119.63	108.00	40.30	410
15-16	112.31	96.00	30.74	513
16-17	119.01	108.00	39.53	430



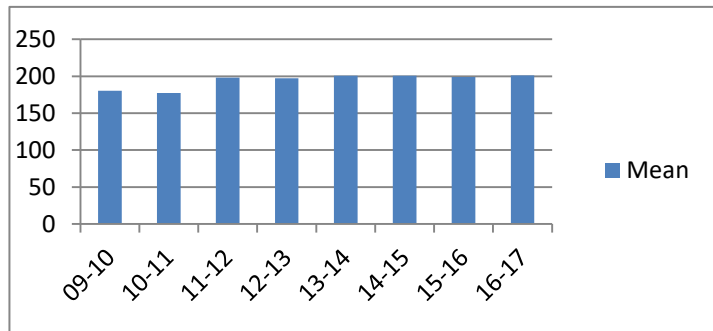
### Average Incarceration Length - Aggravated Robbery - Standard Offenders

Fiscal Year	Mean	Median	Standard Deviation	N
09-10	108.39	96.00	20.67	653
10-11	108.31	96.00	16.97	558
11-12	108.59	96.00	17.99	460
12-13	109.08	96.00	17.60	401
13-14	111.16	96.00	18.12	408
14-15	111.98	108.00	19.12	333
15-16	110.77	96.00	21.20	436
16-17	112.62	108.00	19.09	361



### Average Incarceration Length - Aggravated Robbery - Multiple Offenders

Fiscal Year	Mean	Median	Standard Deviation	N
09-10	180.08	180.00	38.80	74
10-11	177.25	174.00	36.26	24
11-12	198.11	180.00	34.55	55
12-13	197.37	180.00	35.59	38
13-14	200.59	216.00	36.18	37
14-15	200.73	180.00	29.70	33
15-16	199.00	201.00	22.57	18
16-17	201.11	204.00	34.84	27

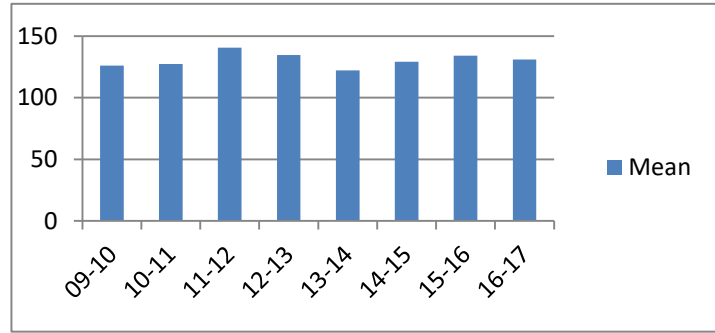


## Average Incarceration Lengths in Months by Felony Class and Offense

Note: Column N indicates the number of felony convictions. Individual offenders can have multiple convictions. Incarceration includes life without parole and death sentences. Probation includes sentences to community corrections.

### Average Incarceration Length - Aggravated Sexual Battery - All Offenders

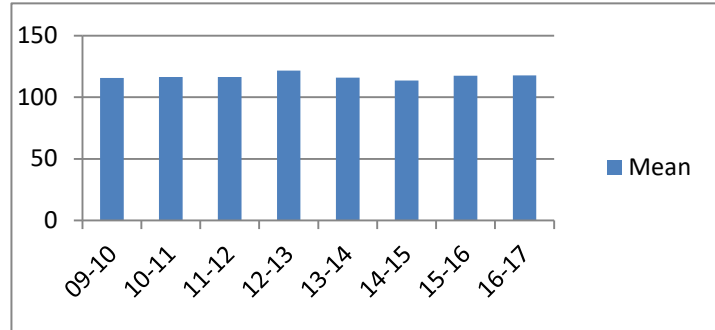
Fiscal Year	Mean	Median	Standard Deviation	N
09-10	126.13	120.00	31.38	182
10-11	127.46	120.00	34.27	201
11-12	140.71	120.00	39.63	383
12-13	134.69	120.00	38.27	217
13-14	122.28	120.00	34.22	186
14-15	129.24	120.00	41.85	168
15-16	134.19	120.00	40.12	139
16-17	131.04	120.00	39.50	246



low occurrence frequencies.

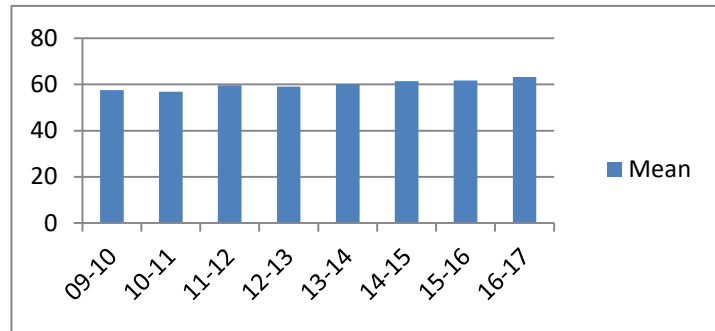
### Average Incarceration Length - Aggravated Sexual Battery - Standard Offenders

Fiscal Year	Mean	Median	Standard Deviation	N
09-10	115.84	120.00	18.38	153
10-11	116.60	120.00	18.18	173
11-12	116.56	120.00	15.94	251
12-13	121.62	120.00	19.29	181
13-14	115.95	120.00	18.30	166
14-15	113.61	108.00	16.99	139
15-16	117.60	120.00	18.84	105
16-17	117.87	120.00	19.25	208



### Average Incarceration Length - Class C - All Offenders

Fiscal Year	Mean	Median	Standard Deviation	N
09-10	57.56	48.00	27.07	7,372
10-11	56.89	48.00	25.07	7,843
11-12	59.62	48.00	28.49	7,629
12-13	59.03	48.00	28.06	6,611
13-14	60.18	48.00	27.77	6,113
14-15	61.39	48.00	31.00	5,343
15-16	61.71	48.00	29.32	5,062
16-17	63.25	60.00	30.08	4,546

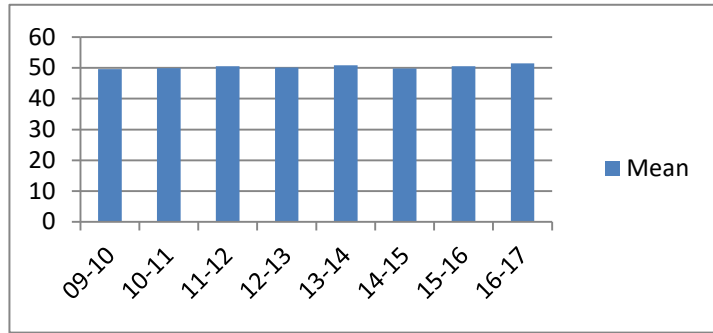


## Average Incarceration Lengths in Months by Felony Class and Offense

Note: Column N indicates the number of felony convictions. Individual offenders can have multiple convictions. Incarceration includes life without parole and death sentences. Probation includes sentences to community corrections.

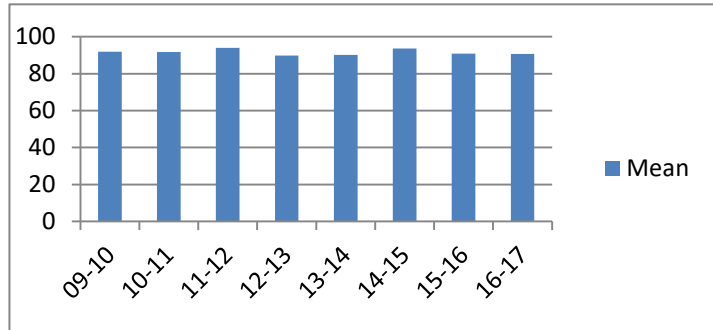
### Average Incarceration Length - Class C - Standard Offenders

Fiscal Year	Mean	Median	Standard Deviation	N
09-10	49.64	48.00	16.13	6,194
10-11	49.89	48.00	15.64	6,655
11-12	50.56	48.00	16.81	6,282
12-13	50.12	48.00	15.63	5,424
13-14	50.88	48.00	15.91	4,940
14-15	49.78	48.00	16.63	4,186
15-16	50.57	48.00	17.03	3,910
16-17	51.45	48.00	16.39	3,472



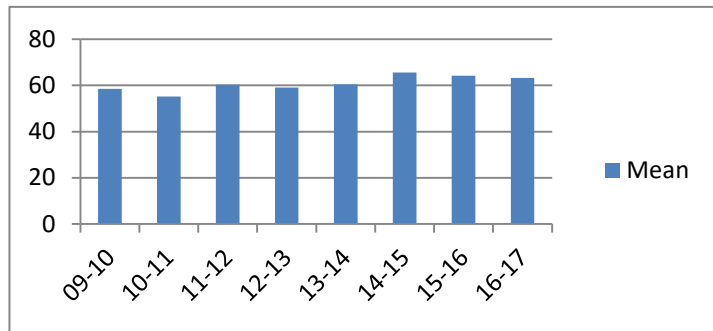
### Average Incarceration Length - Class C - Multiple Offenders

Fiscal Year	Mean	Median	Standard Deviation	N
09-10	91.84	96.00	21.41	903
10-11	91.61	96.00	22.13	931
11-12	93.98	96.00	21.83	1,019
12-13	89.79	96.00	21.82	888
13-14	90.18	84.00	20.00	914
14-15	93.52	96.00	22.37	880
15-16	90.83	84.00	20.89	872
16-17	90.63	96.00	20.35	808



### Average Incarceration Length - Aggravated Burglary - All Offenders

Fiscal Year	Mean	Median	Standard Deviation	N
09-10	58.54	48.00	28.41	2,089
10-11	55.22	48.00	24.51	2,258
11-12	60.36	48.00	30.42	2,341
12-13	59.10	48.00	30.30	2,016
13-14	60.48	48.00	29.33	1,719
14-15	65.64	48.00	34.69	1,522
15-16	64.26	54.00	32.10	1,335
16-17	63.25	60.00	32.08	978

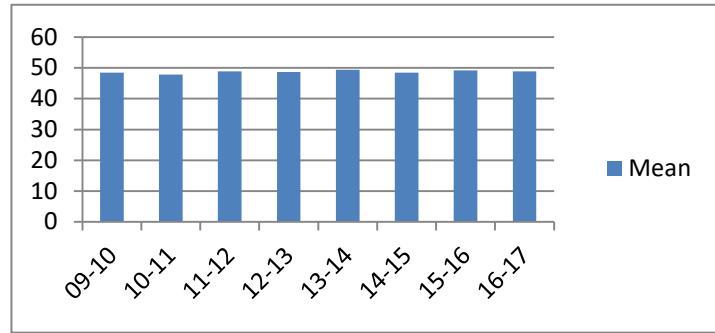


## Average Incarceration Lengths in Months by Felony Class and Offense

Note: Column N indicates the number of felony convictions. Individual offenders can have multiple convictions. Incarceration includes life without parole and death sentences. Probation includes sentences to community corrections.

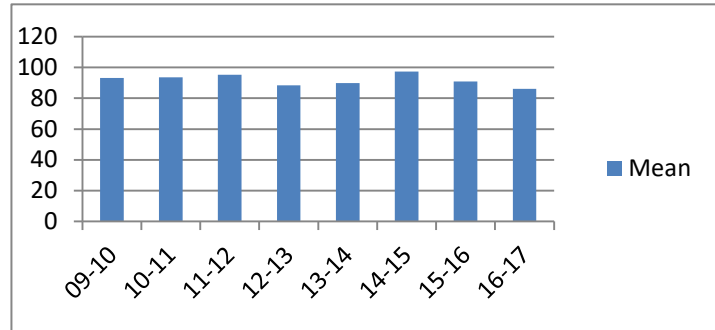
### Average Incarceration Length - Aggravated Burglary - Standard Offenders

Fiscal Year	Mean	Median	Standard Deviation	N
09-10	48.45	48.00	14.34	1,708
10-11	47.82	48.00	13.54	1,926
11-12	48.89	48.00	15.10	1,867
12-13	48.71	48.00	14.30	1,627
13-14	49.38	48.00	14.26	1,348
14-15	48.50	48.00	16.89	1,076
15-16	49.16	48.00	14.44	953
16-17	48.93	48.00	14.77	710



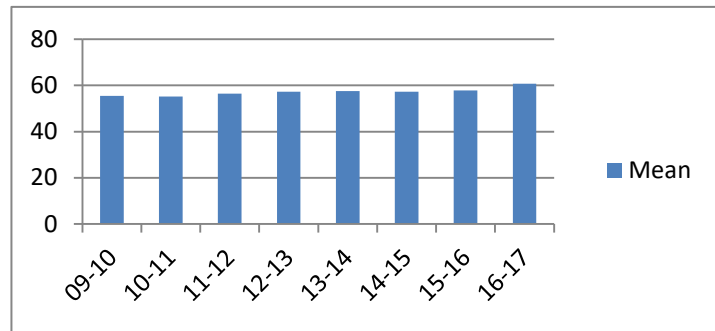
### Average Incarceration Length - Aggravated Burglary - Multiple Offenders

Fiscal Year	Mean	Median	Standard Deviation	N
09-10	93.25	96.00	18.55	292
10-11	93.70	96.00	20.20	245
11-12	95.21	96.00	21.55	326
12-13	88.51	84.00	20.98	270
13-14	89.79	84.00	19.79	282
14-15	97.37	96.00	21.90	349
15-16	90.81	84.00	22.99	283
16-17	86.16	73.00	18.90	193



### Average Incarceration Length - Aggravated Assault - All Offenders

Fiscal Year	Mean	Median	Standard Deviation	N
09-10	55.44	48.00	25.37	1,050
10-11	55.23	48.00	25.25	1,057
11-12	56.38	48.00	26.52	1,100
12-13	57.32	48.00	26.76	1,118
13-14	57.49	48.00	26.92	986
14-15	57.25	48.00	27.20	951
15-16	57.81	48.00	28.65	1,028
16-17	60.74	48.03	27.82	877

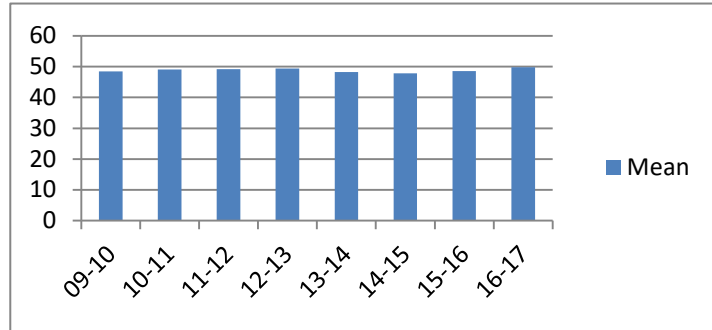


## Average Incarceration Lengths in Months by Felony Class and Offense

Note: Column N indicates the number of felony convictions. Individual offenders can have multiple convictions. Incarceration includes life without parole and death sentences. Probation includes sentences to community corrections.

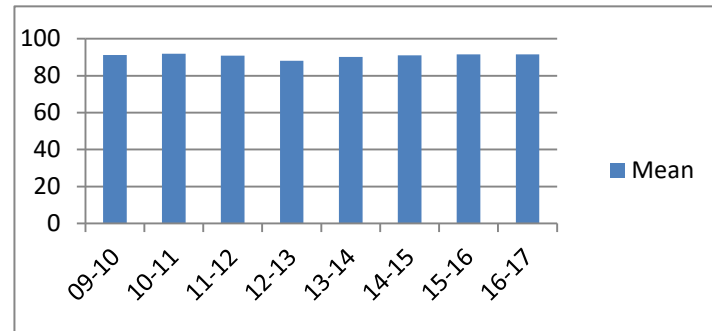
### Average Incarceration Length - Aggravated Assault - Standard Offenders

Fiscal Year	Mean	Median	Standard Deviation	N
09-10	48.44	36.03	15.36	898
10-11	49.13	48.00	15.39	924
11-12	49.24	48.00	16.39	940
12-13	49.39	48.00	15.18	937
13-14	48.24	48.00	14.17	799
14-15	47.89	36.00	14.83	776
15-16	48.60	36.00	17.24	841
16-17	49.81	48.00	14.68	685



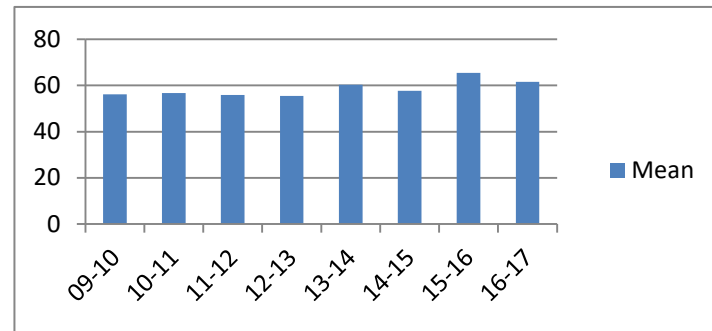
### Average Incarceration Length - Aggravated Assault - Multiple Offenders

Fiscal Year	Mean	Median	Standard Deviation	N
09-10	91.26	96.00	21.06	116
10-11	91.83	96.00	20.61	93
11-12	90.89	96.00	21.45	131
12-13	88.04	96.00	21.24	146
13-14	90.07	84.00	22.27	161
14-15	91.01	96.00	20.85	136
15-16	91.59	84.00	22.19	137
16-17	91.56	96.00	19.43	142



### Average Incarceration Length - Schedule II Cocaine < 1/2 Gram - All Offenders

Fiscal Year	Mean	Median	Standard Deviation	N
09-10	56.17	48.00	25.79	1,247
10-11	56.72	48.00	25.41	1,269
11-12	55.85	48.00	24.27	801
12-13	55.49	48.00	20.70	343
13-14	60.38	60.00	22.10	315
14-15	57.66	48.00	25.03	249
15-16	65.52	60.00	32.88	161
16-17	61.54	60.00	25.51	136



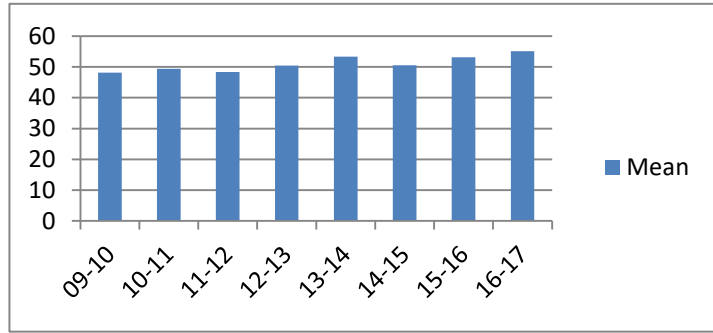


## Average Incarceration Lengths in Months by Felony Class and Offense

Note: Column N indicates the number of felony convictions. Individual offenders can have multiple convictions. Incarceration includes life without parole and death sentences. Probation includes sentences to community corrections.

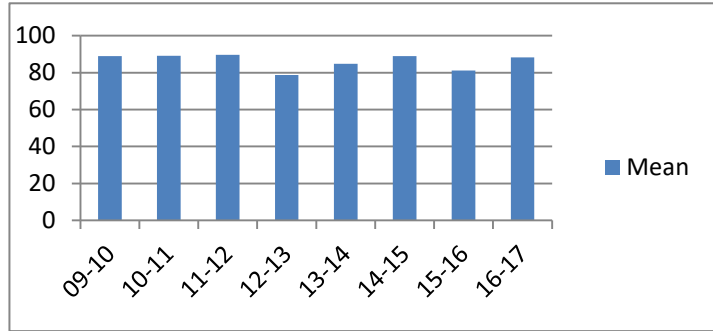
### Average Incarceration Length - Schedule II Cocaine < 1/2 Gram - Standard Offenders

Fiscal Year	Mean	Median	Standard Deviation	N
09-10	48.12	48.00	14.27	1,023
10-11	49.38	48.00	14.85	1,067
11-12	48.35	48.00	14.73	640
12-13	50.42	48.00	14.03	289
13-14	53.39	48.00	17.15	245
14-15	50.58	48.00	15.01	209
15-16	53.11	48.00	17.90	120
16-17	55.11	48.00	18.73	114



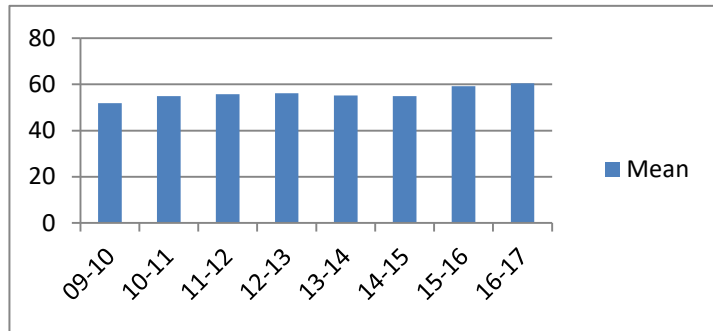
### Average Incarceration Length - Schedule II Cocaine < 1/2 Gram - Multiple Offenders

Fiscal Year	Mean	Median	Standard Deviation	N
09-10	88.90	84.00	22.06	178
10-11	89.07	73.00	26.60	165
11-12	89.55	84.00	23.57	130
12-13	78.70	72.00	19.17	47
13-14	84.72	72.00	19.47	67
14-15	88.85	84.00	17.80	26
15-16	81.10	72.00	18.04	29
16-17	88.20	78.00	21.07	20



### Average Incarceration Length - Schedule II Drugs: Max \$100,000 Fine - All Offenders

Fiscal Year	Mean	Median	Standard Deviation	N
09-10	51.84	48.00	21.87	584
10-11	54.86	48.00	23.86	793
11-12	55.72	48.00	22.91	946
12-13	56.13	48.00	25.79	815
13-14	55.17	48.00	23.64	830
14-15	54.86	42.00	32.95	520
15-16	59.27	48.00	26.98	449
16-17	60.47	48.03	26.93	393

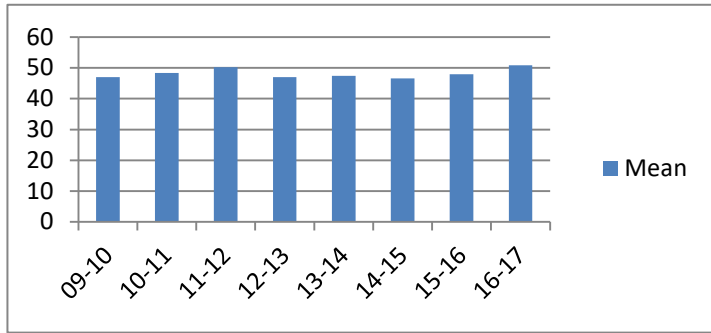


## Average Incarceration Lengths in Months by Felony Class and Offense

Note: Column N indicates the number of felony convictions. Individual offenders can have multiple convictions. Incarceration includes life without parole and death sentences. Probation includes sentences to community corrections.

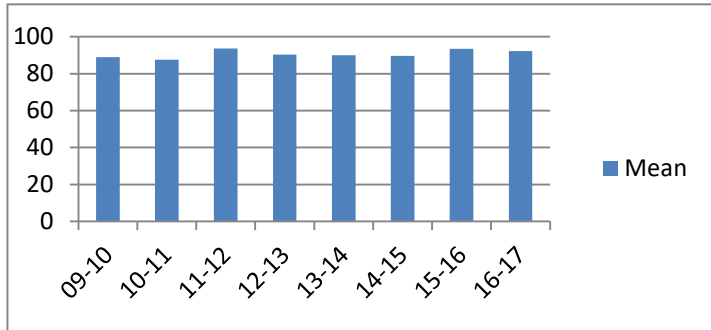
**Average Incarceration Length - Schedule II Drugs:  
Max \$100,000 Fine - Standard Offenders**

Fiscal Year	Mean	Median	Standard Deviation	N
09-10	47.00	36.00	14.22	518
10-11	48.33	48.00	14.62	674
11-12	50.22	48.00	16.14	838
12-13	46.98	36.00	14.09	666
13-14	47.46	36.03	14.40	682
14-15	46.63	36.00	15.53	455
15-16	47.91	48.00	13.98	345
16-17	50.84	48.00	16.15	315



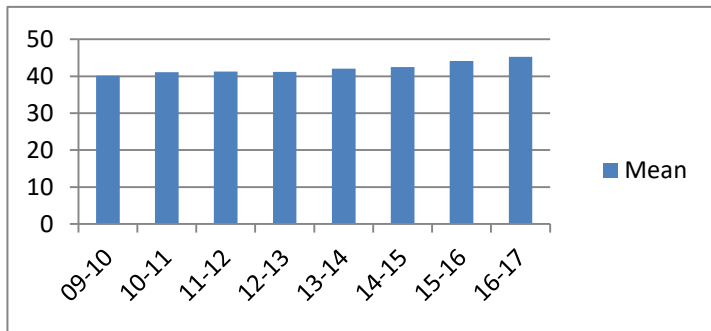
**Average Incarceration Length - Schedule II Drugs:  
Max \$100,000 Fine - Multiple Offenders**

Fiscal Year	Mean	Median	Standard Deviation	N
09-10	88.86	96.00	21.15	57
10-11	87.49	72.00	19.67	102
11-12	93.68	96.00	20.79	88
12-13	90.36	96.00	19.82	122
13-14	90.00	84.00	20.59	116
14-15	89.67	96.00	22.96	49
15-16	93.47	96.00	21.38	94
16-17	92.25	96.00	22.00	64



**Average Incarceration Length - Class D - All  
Offenders**

Fiscal Year	Mean	Median	Standard Deviation	N
09-10	40.16	36.00	22.56	7,222
10-11	41.04	36.00	23.17	7,674
11-12	41.22	36.00	23.64	7,935
12-13	41.15	36.00	23.25	6,958
13-14	42.07	36.00	24.04	6,242
14-15	42.47	36.00	24.53	5,437
15-16	44.10	36.00	26.28	5,026
16-17	45.22	36.00	26.20	4,101

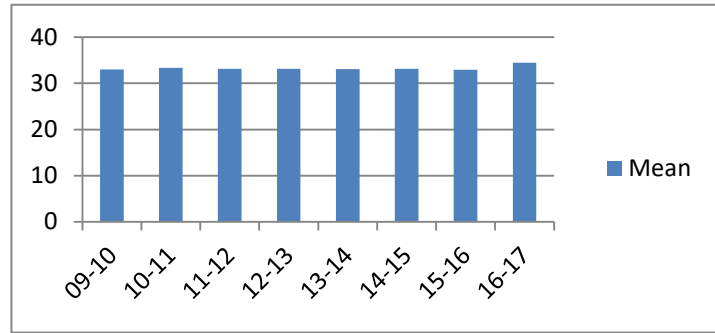


## Average Incarceration Lengths in Months by Felony Class and Offense

Note: Column N indicates the number of felony convictions. Individual offenders can have multiple convictions. Incarceration includes life without parole and death sentences. Probation includes sentences to community corrections.

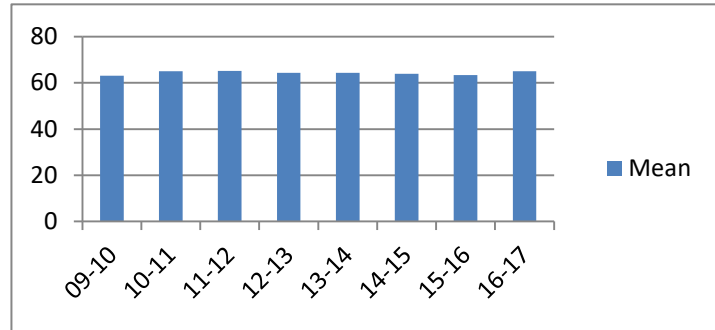
### Average Incarceration Length - Class D - Standard Offenders

Fiscal Year	Mean	Median	Standard Deviation	N
09-10	33.03	30.00	10.54	6,003
10-11	33.37	30.00	11.69	6,269
11-12	33.14	24.03	10.54	6,440
12-13	33.13	30.00	10.25	5,678
13-14	33.08	30.00	10.36	4,907
14-15	33.12	36.00	10.54	4,249
15-16	32.97	36.00	10.16	3,737
16-17	34.43	36.00	11.23	3,084



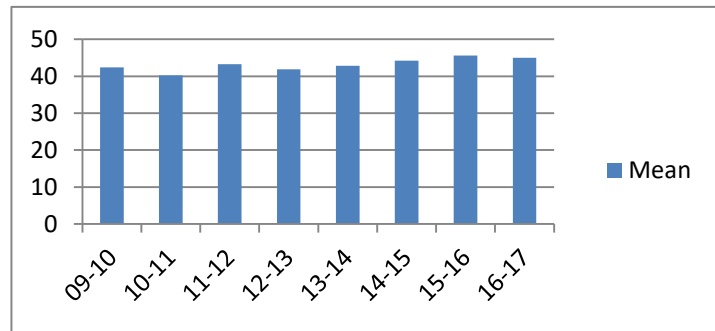
### Average Incarceration Length - Class D - Multiple Offenders

Fiscal Year	Mean	Median	Standard Deviation	N
09-10	63.14	60.00	18.35	889
10-11	65.08	60.00	17.53	1,063
11-12	65.11	60.00	18.75	1,131
12-13	64.32	60.00	18.60	922
13-14	64.36	60.00	17.76	1,026
14-15	63.96	60.00	18.70	882
15-16	63.41	60.00	18.63	949
16-17	64.99	60.00	18.97	752



### Average Incarceration Length - Theft: \$1,000 to \$10,000 - All Offenders

Fiscal Year	Mean	Median	Standard Deviation	N
09-10	42.42	36.00	25.21	2,153
10-11	40.24	36.00	21.75	2,314
11-12	43.29	36.00	24.85	2,634
12-13	41.90	36.00	23.74	2,434
13-14	42.79	36.00	25.15	2,095
14-15	44.23	36.00	25.96	1,882
15-16	45.58	36.00	27.65	1,756
16-17	44.98	36.00	27.08	1,133

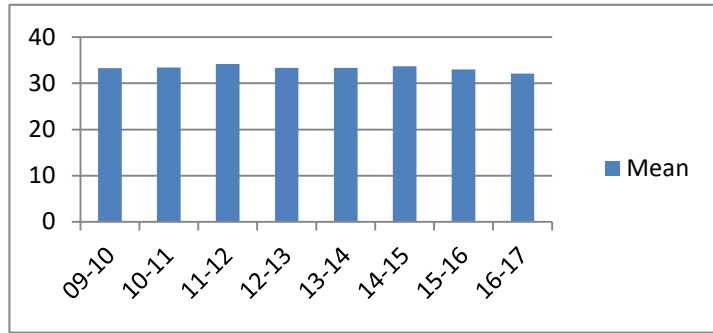


## Average Incarceration Lengths in Months by Felony Class and Offense

Note: Column N indicates the number of felony convictions. Individual offenders can have multiple convictions. Incarceration includes life without parole and death sentences. Probation includes sentences to community corrections.

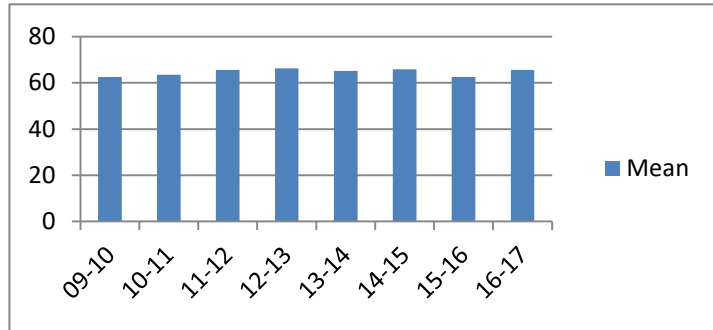
**Average Incarceration Length - Theft: \$1,000 to \$10,000 - Standard Offenders**

Fiscal Year	Mean	Median	Standard Deviation	N
09-10	33.29	36.00	10.33	1,722
10-11	33.39	30.00	11.39	1,914
11-12	34.17	36.00	10.69	2,084
12-13	33.37	36.00	10.29	1,951
13-14	33.36	33.00	10.18	1,648
14-15	33.71	36.00	10.93	1,433
15-16	32.98	36.00	10.14	1,232
16-17	32.11	24.03	10.31	807



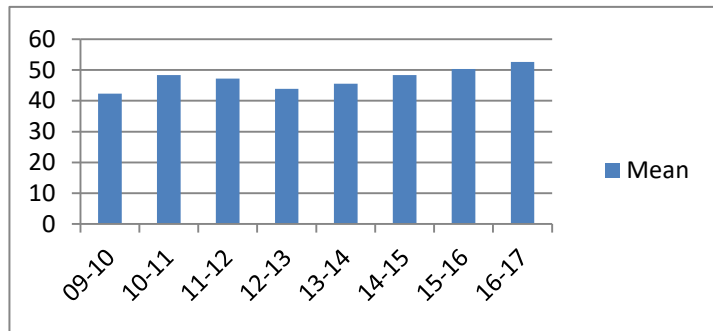
**Average Incarceration Length - Theft: \$1,000 to \$10,000 - Multiple Offenders**

Fiscal Year	Mean	Median	Standard Deviation	N
09-10	62.60	60.00	17.97	293
10-11	63.57	60.00	16.90	310
11-12	65.54	60.00	19.28	413
12-13	66.23	60.00	20.07	359
13-14	65.15	60.00	19.26	341
14-15	65.83	60.00	19.68	332
15-16	62.56	60.00	19.43	402
16-17	65.61	60.00	19.22	248



**Average Incarceration Length - Burglary Other Than Habitation - All Offenders**

Fiscal Year	Mean	Median	Standard Deviation	N
09-10	42.33	36.00	23.55	1,012
10-11	48.32	36.00	28.61	1,268
11-12	47.18	36.00	28.66	1,136
12-13	43.89	36.00	23.71	947
13-14	45.51	36.00	25.29	865
14-15	48.34	36.00	29.94	699
15-16	50.38	48.00	30.19	654
16-17	52.58	48.00	33.31	575

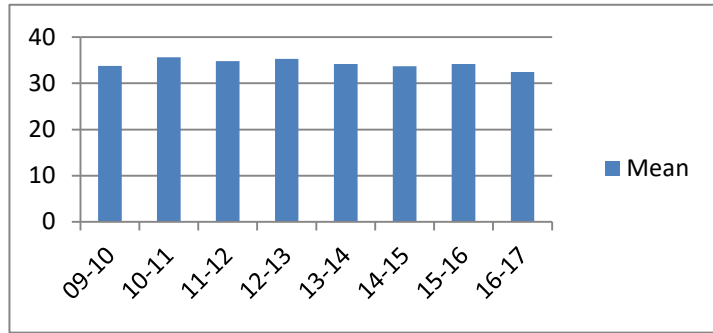


## Average Incarceration Lengths in Months by Felony Class and Offense

Note: Column N indicates the number of felony convictions. Individual offenders can have multiple convictions. Incarceration includes life without parole and death sentences. Probation includes sentences to community corrections.

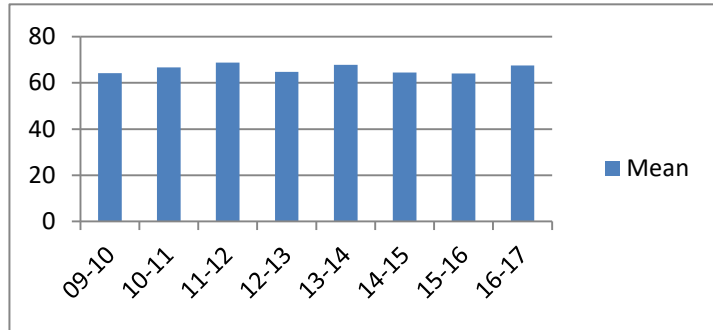
### Average Incarceration Length - Burglary Other Than Habitation - Standard Offenders

Fiscal Year	Mean	Median	Standard Deviation	N
09-10	33.74	36.00	10.86	803
10-11	35.61	36.00	15.27	903
11-12	34.80	36.00	10.75	857
12-13	35.31	36.00	10.64	755
13-14	34.16	36.00	10.58	640
14-15	33.68	36.00	10.94	486
15-16	34.20	36.00	10.89	421
16-17	32.46	24.03	10.71	351



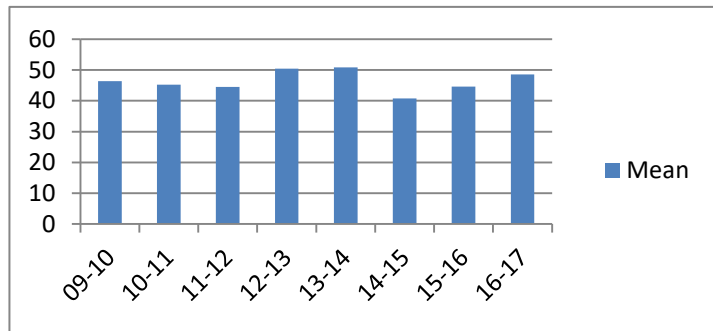
### Average Incarceration Length - Burglary Other Than Habitation - Multiple Offenders

Fiscal Year	Mean	Median	Standard Deviation	N
09-10	64.23	60.00	17.27	151
10-11	66.70	72.00	15.22	270
11-12	68.77	72.00	20.21	186
12-13	64.83	60.00	17.40	138
13-14	67.76	72.00	17.25	177
14-15	64.47	60.00	17.40	136
15-16	64.12	60.00	17.41	169
16-17	67.53	60.00	19.27	153



### Average Incarceration Length - Identity Theft - All Offenders

Fiscal Year	Mean	Median	Standard Deviation	N
09-10	46.37	48.00	25.83	547
10-11	45.27	36.00	29.19	502
11-12	44.53	36.00	25.57	526
12-13	50.43	48.00	30.19	467
13-14	50.89	48.00	29.79	344
14-15	40.82	36.00	20.25	379
15-16	44.62	36.00	25.34	341
16-17	48.57	48.00	19.98	574

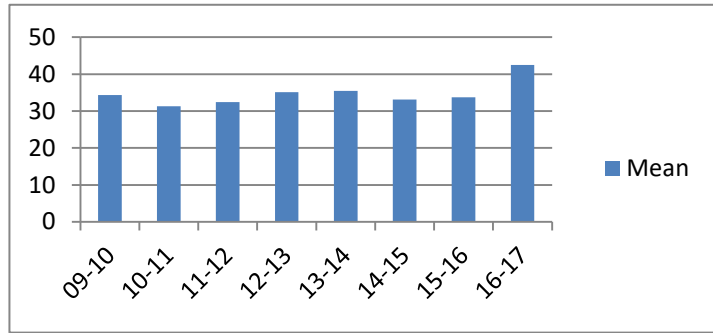


## Average Incarceration Lengths in Months by Felony Class and Offense

Note: Column N indicates the number of felony convictions. Individual offenders can have multiple convictions. Incarceration includes life without parole and death sentences. Probation includes sentences to community corrections.

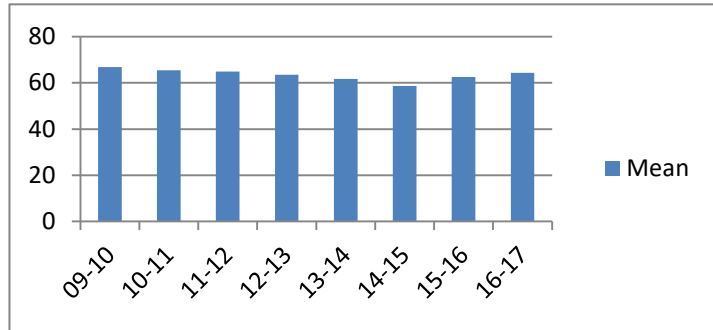
### Average Incarceration Length - Identity Theft - Standard Offenders

Fiscal Year	Mean	Median	Standard Deviation	N
09-10	34.29	36.00	10.38	389
10-11	31.32	24.00	10.23	360
11-12	32.40	24.03	9.67	373
12-13	35.09	36.00	10.54	322
13-14	35.45	36.00	10.45	221
14-15	33.09	36.00	8.98	292
15-16	33.76	36.00	9.78	257
16-17	42.46	48.00	9.36	467



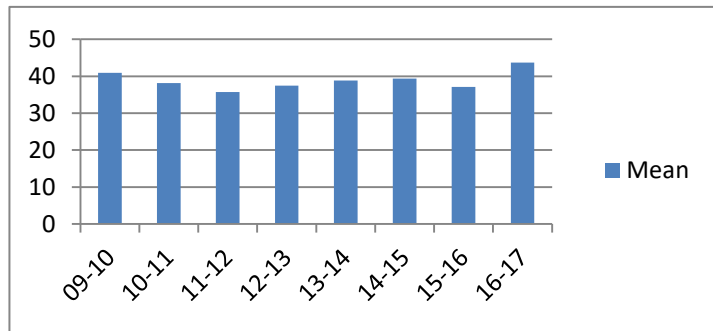
### Average Incarceration Length - Identity Theft - Multiple Offenders

Fiscal Year	Mean	Median	Standard Deviation	N
09-10	66.90	72.00	19.80	127
10-11	65.42	60.00	19.01	102
11-12	64.91	66.00	15.79	127
12-13	63.56	60.00	16.66	91
13-14	61.73	48.00	16.02	90
14-15	58.65	48.00	18.54	71
15-16	62.54	60.00	16.00	52
16-17	64.33	60.00	18.21	86



### Average Incarceration Length - Obtain Drugs by Fraud - All Offenders

Fiscal Year	Mean	Median	Standard Deviation	N
09-10	40.94	36.00	16.89	288
10-11	38.11	36.00	14.39	221
11-12	35.73	36.00	16.10	287
12-13	37.42	24.03	22.99	173
13-14	38.85	36.00	18.04	137
14-15	39.35	36.00	21.54	140
15-16	37.10	36.00	18.55	176
16-17	43.68	36.00	28.12	25

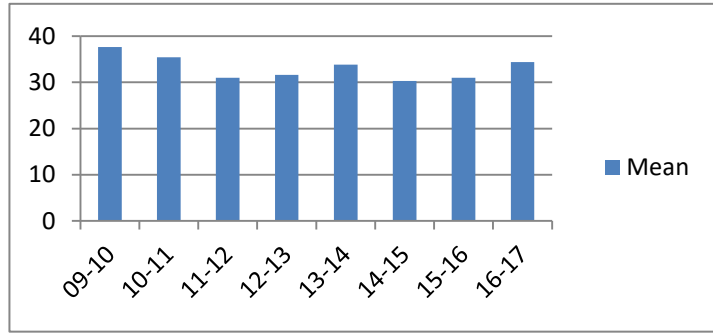


## Average Incarceration Lengths in Months by Felony Class and Offense

Note: Column N indicates the number of felony convictions. Individual offenders can have multiple convictions. Incarceration includes life without parole and death sentences. Probation includes sentences to community corrections.

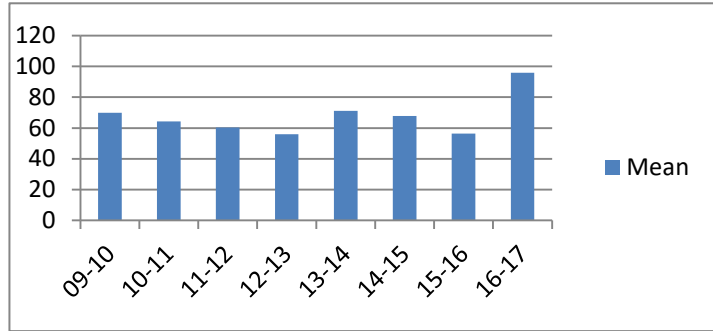
**Average Incarceration Length - Obtain Drugs by Fraud - Standard Offenders**

Fiscal Year	Mean	Median	Standard Deviation	N
09-10	37.62	36.00	9.82	270
10-11	35.40	36.00	10.86	201
11-12	30.99	24.00	8.84	243
12-13	31.60	24.00	9.89	154
13-14	33.87	36.00	10.01	121
14-15	30.32	24.00	8.67	112
15-16	30.97	30.50	7.64	150
16-17	34.37	36.00	8.52	22



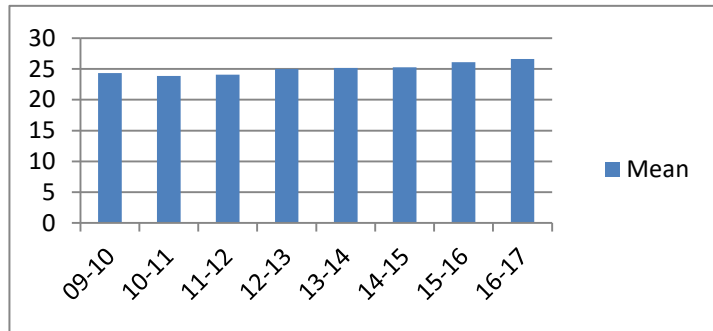
**Average Incarceration Length - Obtain Drugs by Fraud - Multiple Offenders**

Fiscal Year	Mean	Median	Standard Deviation	N
09-10	70.00	66.00	22.02	6
10-11	64.24	72.00	11.18	17
11-12	60.29	48.00	17.48	42
12-13	56.00	48.00	11.82	12
13-14	71.14	72.00	14.48	14
14-15	67.83	72.00	10.62	23
15-16	56.31	48.00	15.01	13
16-17	96.00	96.00	0.00	2



**Average Incarceration Length - Class E - All Offenders**

Fiscal Year	Mean	Median	Standard Deviation	N
09-10	24.31	24.00	13.53	8,739
10-11	23.87	24.00	13.26	9,124
11-12	24.06	24.00	13.21	8,450
12-13	25.00	24.00	14.32	7,915
13-14	25.19	24.00	15.10	7,143
14-15	25.27	24.00	13.93	5,950
15-16	26.09	24.00	14.18	5,696
16-17	26.64	24.00	15.27	4,800

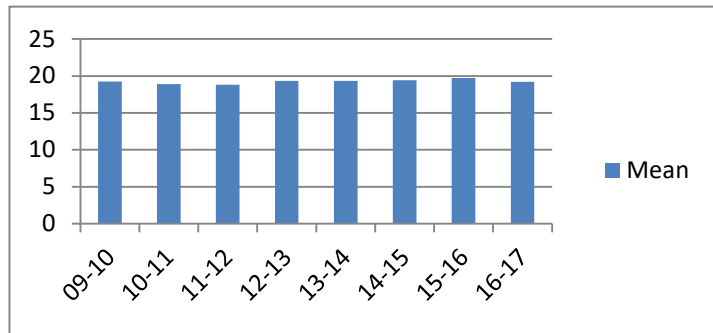


## Average Incarceration Lengths in Months by Felony Class and Offense

Note: Column N indicates the number of felony convictions. Individual offenders can have multiple convictions. Incarceration includes life without parole and death sentences. Probation includes sentences to community corrections.

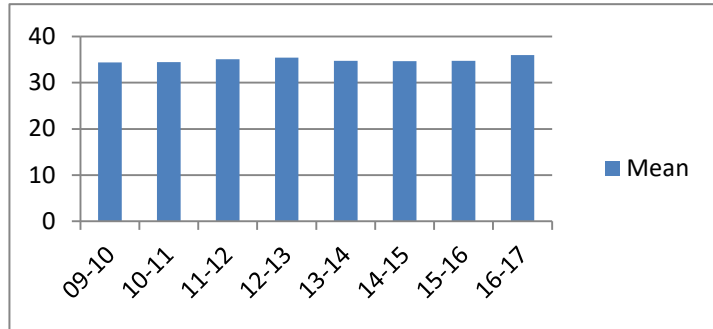
### Average Incarceration Length - Class E - Standard Offenders

Fiscal Year	Mean	Median	Standard Deviation	N
09-10	19.25	24.00	6.41	6,758
10-11	18.90	24.00	6.56	7,012
11-12	18.80	24.00	6.29	6,403
12-13	19.31	24.00	6.62	5,994
13-14	19.33	24.00	6.88	5,322
14-15	19.40	24.00	6.34	4,352
15-16	19.72	24.00	6.42	3,950
16-17	19.20	24.00	6.43	3,305



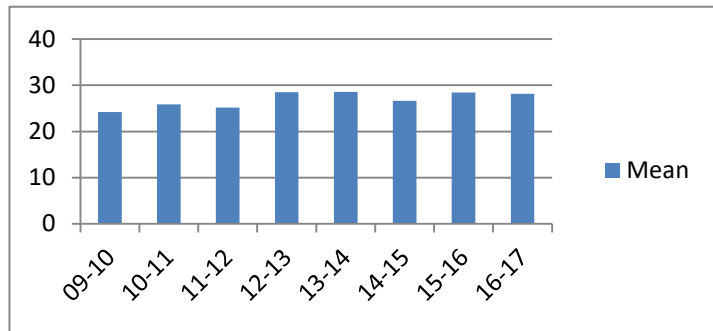
### Average Incarceration Length - Class E - Multiple Offenders

Fiscal Year	Mean	Median	Standard Deviation	N
09-10	34.38	36.00	10.50	1,423
10-11	34.47	36.00	10.56	1,596
11-12	35.09	36.00	10.53	1,560
12-13	35.41	36.00	10.72	1,331
13-14	34.72	36.00	10.60	1,344
14-15	34.69	36.00	10.48	1,188
15-16	34.73	36.00	11.18	1,338
16-17	36.02	36.00	11.04	1,056



### Average Incarceration Length - Forgery: Up to \$1,000 - All Offenders

Fiscal Year	Mean	Median	Standard Deviation	N
09-10	24.19	24.00	12.50	1,821
10-11	25.88	24.00	14.76	1,586
11-12	25.16	24.00	14.44	1,281
12-13	28.51	24.00	17.60	1,405
13-14	28.59	24.00	22.32	894
14-15	26.65	24.00	13.26	612
15-16	28.46	24.00	14.99	554
16-17	28.14	24.00	16.23	479



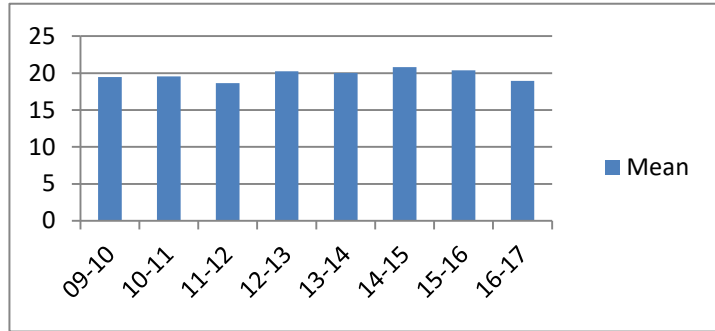


## Average Incarceration Lengths in Months by Felony Class and Offense

Note: Column N indicates the number of felony convictions. Individual offenders can have multiple convictions. Incarceration includes life without parole and death sentences. Probation includes sentences to community corrections.

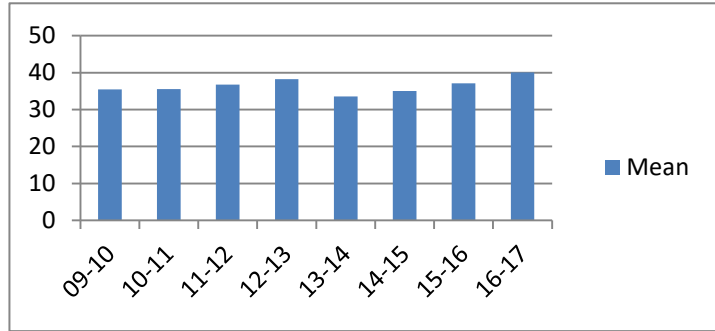
**Average Incarceration Length - Forgery: Up to \$1,000 - Standard Offenders**

Fiscal Year	Mean	Median	Standard Deviation	N
09-10	19.45	24.00	6.08	1,430
10-11	19.53	24.00	6.52	1,174
11-12	18.66	24.00	6.23	949
12-13	20.23	24.00	6.54	1,041
13-14	20.01	24.00	7.40	657
14-15	20.82	24.00	5.49	441
15-16	20.36	24.00	5.93	370
16-17	18.93	24.00	6.88	311



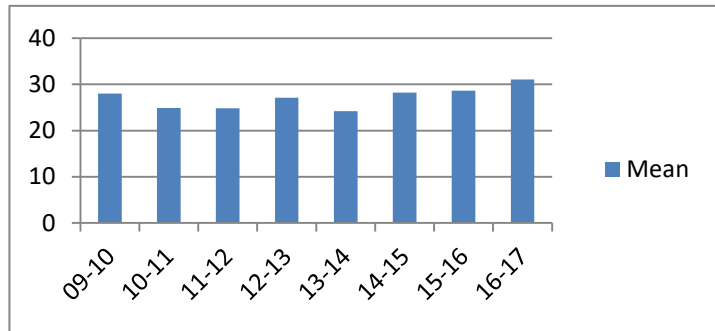
**Average Incarceration Length - Forgery: Up to \$1,000 - Multiple Offenders**

Fiscal Year	Mean	Median	Standard Deviation	N
09-10	35.44	36.00	10.77	278
10-11	35.51	36.00	11.14	278
11-12	36.71	36.00	10.33	229
12-13	38.22	36.00	9.73	165
13-14	33.52	36.00	9.87	138
14-15	35.06	36.00	10.65	123
15-16	37.11	36.00	9.06	124
16-17	40.03	42.00	11.78	118



**Average Incarceration Length - Burglary: Auto - All Offenders**

Fiscal Year	Mean	Median	Standard Deviation	N
09-10	28.01	24.00	16.80	1,336
10-11	24.89	24.00	13.82	1,637
11-12	24.83	24.00	12.22	1,403
12-13	27.11	24.00	14.53	956
13-14	24.22	24.00	13.19	1,063
14-15	28.21	24.00	16.18	886
15-16	28.63	24.00	14.45	848
16-17	31.05	24.00	18.29	593

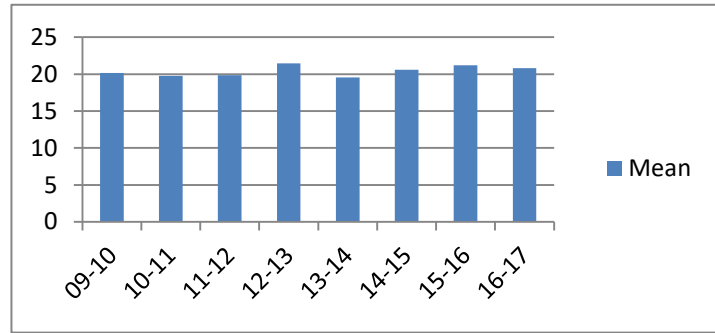


## Average Incarceration Lengths in Months by Felony Class and Offense

Note: Column N indicates the number of felony convictions. Individual offenders can have multiple convictions. Incarceration includes life without parole and death sentences. Probation includes sentences to community corrections.

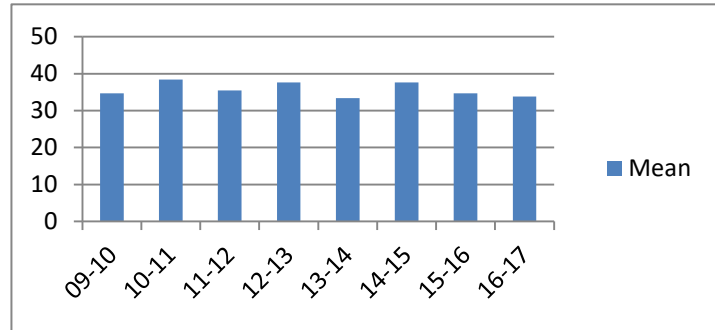
### Average Incarceration Length - Burglary: Auto - Standard Offenders

Fiscal Year	Mean	Median	Standard Deviation	N
09-10	20.14	24.00	5.81	958
10-11	19.75	24.00	7.12	1,299
11-12	19.84	24.00	5.75	1,056
12-13	21.46	24.00	7.28	727
13-14	19.56	24.00	6.17	839
14-15	20.60	24.00	6.15	641
15-16	21.20	24.00	5.60	509
16-17	20.80	24.00	5.87	368



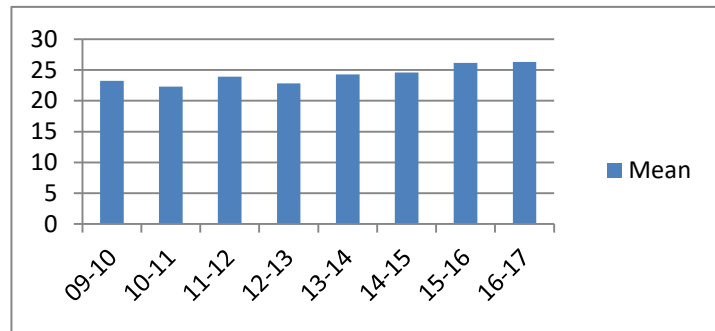
### Average Incarceration Length - Burglary: Auto - Multiple Offenders

Fiscal Year	Mean	Median	Standard Deviation	N
09-10	34.66	36.00	10.46	220
10-11	38.39	36.00	10.49	247
11-12	35.48	36.00	10.71	274
12-13	37.64	36.00	11.89	168
13-14	33.34	36.00	9.72	161
14-15	37.60	36.00	10.29	146
15-16	34.66	36.00	12.69	276
16-17	33.83	30.00	10.44	124



### Average Incarceration Length - Theft: \$500 - \$1,000 - All Offenders

Fiscal Year	Mean	Median	Standard Deviation	N
09-10	23.23	24.00	12.72	1,046
10-11	22.29	24.00	12.44	1,109
11-12	23.94	24.00	13.93	1,152
12-13	22.83	24.00	13.54	1,067
13-14	24.31	24.00	13.60	1,003
14-15	24.59	24.00	14.41	867
15-16	26.16	24.00	14.74	794
16-17	26.31	24.00	15.24	659

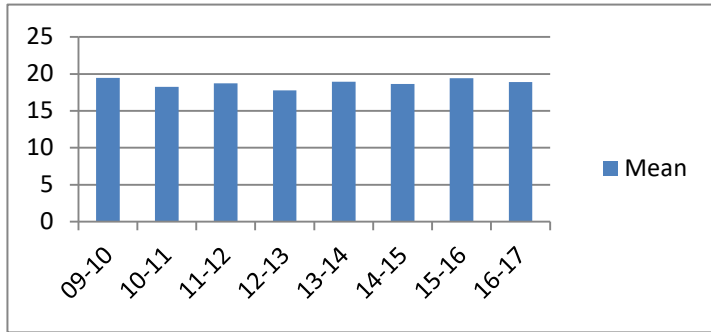


## Average Incarceration Lengths in Months by Felony Class and Offense

Note: Column N indicates the number of felony convictions. Individual offenders can have multiple convictions. Incarceration includes life without parole and death sentences. Probation includes sentences to community corrections.

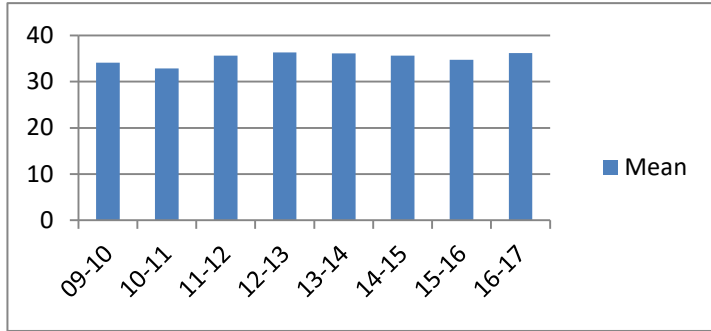
### Average Incarceration Length - Theft: \$500 - \$1,000 - Standard Offenders

Fiscal Year	Mean	Median	Standard Deviation	N
09-10	19.44	24.00	6.92	863
10-11	18.24	18.00	6.15	896
11-12	18.71	24.00	6.27	909
12-13	17.79	12.00	6.38	853
13-14	18.94	24.00	6.17	777
14-15	18.62	24.00	6.11	654
15-16	19.43	24.00	6.19	552
16-17	18.88	24.00	6.11	463



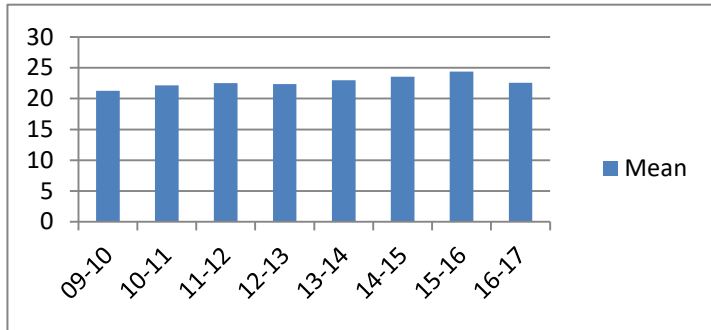
### Average Incarceration Length - Theft: \$500 - \$1,000 - Multiple Offenders

Fiscal Year	Mean	Median	Standard Deviation	N
09-10	34.09	36.00	11.32	132
10-11	32.89	24.03	10.18	166
11-12	35.66	36.00	10.76	169
12-13	36.33	36.00	11.57	152
13-14	36.14	36.00	10.16	169
14-15	35.65	36.00	10.70	153
15-16	34.76	30.00	12.29	180
16-17	36.18	36.00	10.62	138



### Average Incarceration Length - Schedule VI Drugs: Not < 1/2 Ounce - All Offenders

Fiscal Year	Mean	Median	Standard Deviation	N
09-10	21.26	24.00	10.23	673
10-11	22.17	24.00	11.12	715
11-12	22.51	24.00	11.46	711
12-13	22.36	24.00	10.70	676
13-14	22.99	24.00	11.55	635
14-15	23.54	24.00	11.01	504
15-16	24.39	24.00	12.44	375
16-17	22.56	24.00	11.26	275

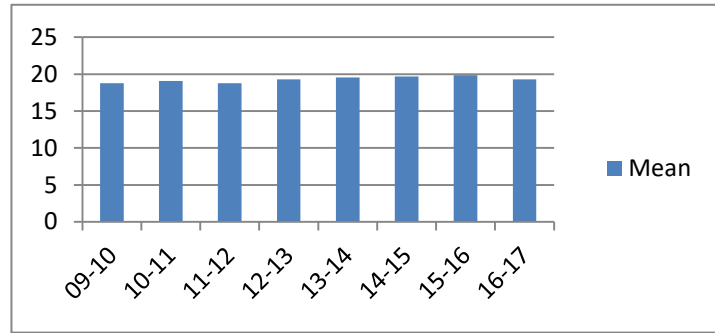


## Average Incarceration Lengths in Months by Felony Class and Offense

Note: Column N indicates the number of felony convictions. Individual offenders can have multiple convictions. Incarceration includes life without parole and death sentences. Probation includes sentences to community corrections.

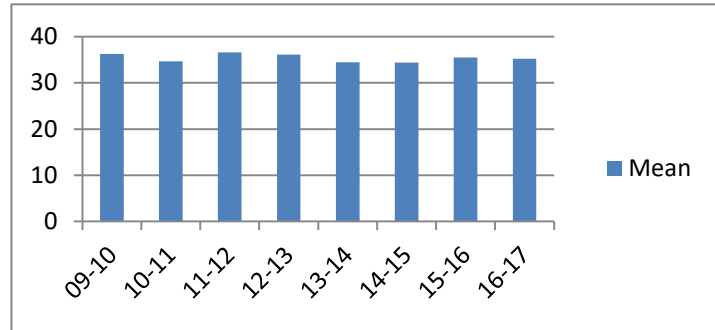
### Average Incarceration Length - Schedule VI Drugs: Not < 1/2 Ounce - Standard Offenders

Fiscal Year	Mean	Median	Standard Deviation	N
09-10	18.78	24.00	6.74	584
10-11	19.05	24.00	6.23	602
11-12	18.76	24.00	6.15	583
12-13	19.27	24.00	5.98	567
13-14	19.53	24.00	6.74	521
14-15	19.66	24.00	6.24	392
15-16	19.83	24.00	6.29	281
16-17	19.27	24.00	6.25	227



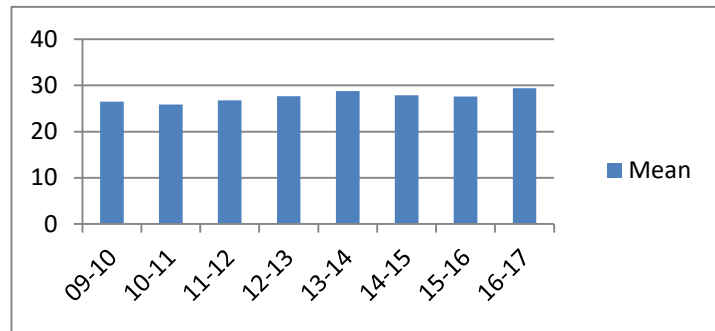
### Average Incarceration Length - Schedule VI Drugs: Not < 1/2 Ounce - Multiple Offenders

Fiscal Year	Mean	Median	Standard Deviation	N
09-10	36.23	36.00	11.39	79
10-11	34.66	36.00	10.04	94
11-12	36.58	36.00	10.50	108
12-13	36.15	36.00	9.77	86
13-14	34.44	36.00	10.42	96
14-15	34.42	36.00	9.91	99
15-16	35.52	36.00	10.66	75
16-17	35.21	36.00	11.35	38



### Average Incarceration Length - Habitual Traffic Offender - All Offenders

Fiscal Year	Mean	Median	Standard Deviation	N
09-10	26.50	24.00	15.26	446
10-11	25.85	24.00	13.71	486
11-12	26.75	24.00	15.06	425
12-13	27.64	24.00	15.33	424
13-14	28.80	24.00	16.17	395
14-15	27.88	24.00	14.36	311
15-16	27.61	24.00	14.41	290
16-17	29.38	24.00	16.03	245

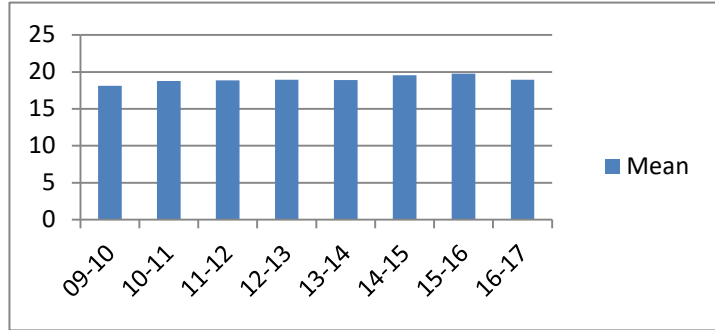


## Average Incarceration Lengths in Months by Felony Class and Offense

Note: Column N indicates the number of felony convictions. Individual offenders can have multiple convictions. Incarceration includes life without parole and death sentences. Probation includes sentences to community corrections.

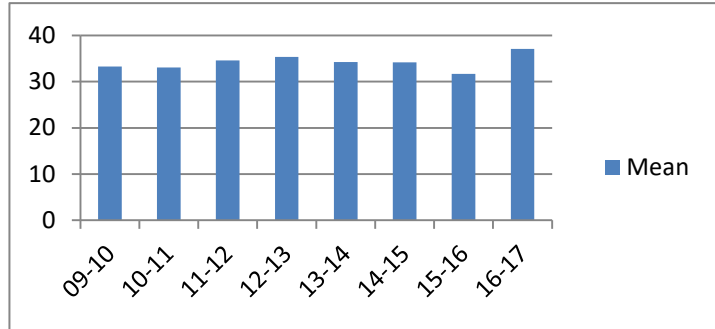
### Average Incarceration Length - Habitual Traffic Offender - Standard Offenders

Fiscal Year	Mean	Median	Standard Deviation	N
09-10	18.12	18.00	5.78	276
10-11	18.76	18.00	5.98	306
11-12	18.87	24.00	5.75	272
12-13	18.93	24.00	5.98	265
13-14	18.90	18.00	6.28	225
14-15	19.54	24.00	6.23	181
15-16	19.75	24.00	5.50	167
16-17	18.94	21.00	5.67	141



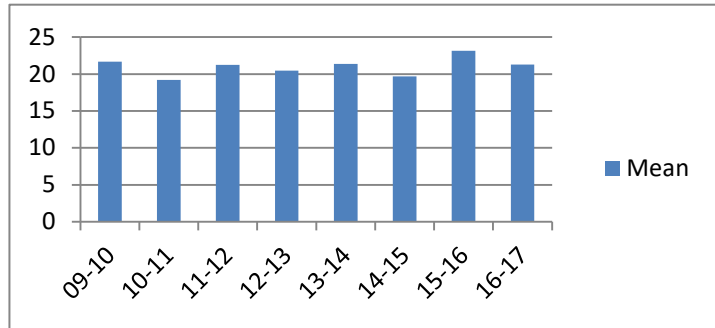
### Average Incarceration Length - Habitual Traffic Offender - Multiple Offenders

Fiscal Year	Mean	Median	Standard Deviation	N
09-10	33.28	36.00	9.63	131
10-11	33.06	36.00	9.19	147
11-12	34.63	36.00	9.83	117
12-13	35.34	36.00	9.94	117
13-14	34.24	36.00	9.82	116
14-15	34.21	36.00	10.25	99
15-16	31.67	30.00	8.60	96
16-17	37.10	36.00	11.28	69



### Average Incarceration Length - Failure to Appear (Felony) - All Offenders

Fiscal Year	Mean	Median	Standard Deviation	N
09-10	21.68	18.00	13.70	332
10-11	19.19	12.00	10.47	383
11-12	21.23	18.00	12.59	368
12-13	20.45	18.00	11.80	421
13-14	21.38	18.00	13.01	378
14-15	19.69	18.00	10.38	338
15-16	23.14	24.00	15.30	296
16-17	21.28	12.00	13.23	313

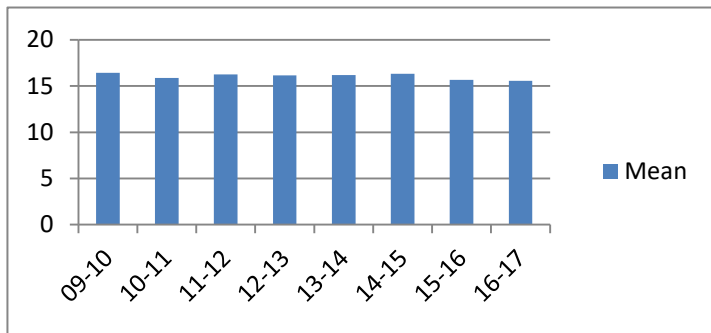


## Average Incarceration Lengths in Months by Felony Class and Offense

Note: Column N indicates the number of felony convictions. Individual offenders can have multiple convictions. Incarceration includes life without parole and death sentences. Probation includes sentences to community corrections.

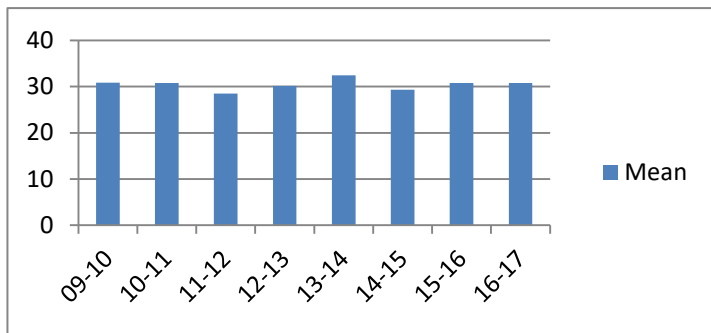
**Average Incarceration Length - Failure to Appear  
(Felony) - Standard Offenders**

Fiscal Year	Mean	Median	Standard Deviation	N
09-10	16.45	12.00	5.71	256
10-11	15.88	12.00	5.49	314
11-12	16.25	12.00	5.53	275
12-13	16.16	12.00	5.47	327
13-14	16.20	12.00	5.61	290
14-15	16.32	12.00	5.51	271
15-16	15.66	12.00	5.41	196
16-17	15.58	12.00	5.54	232



**Average Incarceration Length - Failure to Appear  
(Felony) - Multiple Offenders**

Fiscal Year	Mean	Median	Standard Deviation	N
09-10	30.86	24.00	10.20	56
10-11	30.80	24.00	9.97	60
11-12	28.47	24.00	7.48	68
12-13	30.15	24.00	9.24	71
13-14	32.46	24.02	10.36	68
14-15	29.36	24.00	8.61	59
15-16	30.80	24.00	9.68	75
16-17	30.78	24.00	9.21	60



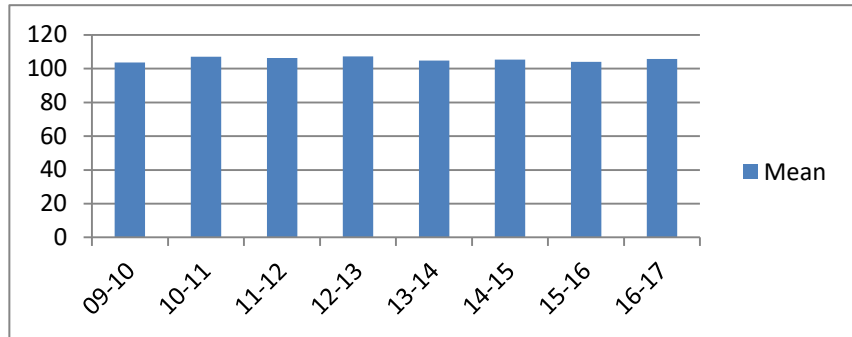
# Average Probation Lengths in Months by Felony Class

Note: Column N indicates the number of felony convictions. Individual offenders can have multiple convictions. Incarceration includes lifewithout parole and death sentences. Probation includes sentences to community corrections.

## Average Probation Length - Felony Class B - All Offenders

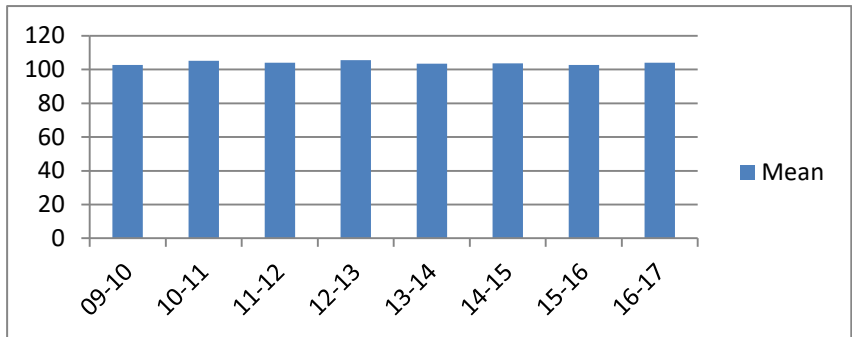
Fiscal Year	Mean	Median	Standard Deviation	N
09-10	103.55	96.00	20.89	541
10-11	106.93	96.00	20.69	618
11-12	106.25	96.00	23.01	565
12-13	107.23	96.00	25.57	644
13-14	104.72	96.00	18.45	507
14-15	105.25	96.00	17.65	605
15-16	104.00	96.00	15.77	557
16-17	105.73	96.00	20.88	600

included due to low occurrence frequencies.



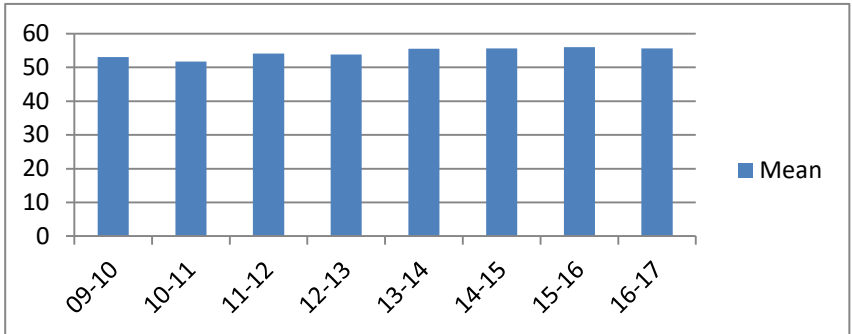
## Average Probation Length - Felony Class B - Standard Offenders

Fiscal Year	Mean	Median	Standard Deviation	N
09-10	102.57	96.00	19.14	530
10-11	105.06	96.00	18.12	581
11-12	103.96	96.00	18.97	522
12-13	105.49	96.00	23.37	604
13-14	103.43	96.00	15.35	489
14-15	103.58	96.00	15.49	567
15-16	102.69	96.00	12.79	535
16-17	104.06	96.00	16.96	580



## Average Probation Length - Class C - All Offenders

Fiscal Year	Mean	Median	Standard Deviation	N
09-10	53.07	48.00	22.69	2,071
10-11	51.70	48.00	21.04	2,344
11-12	54.07	48.00	20.80	2,483
12-13	53.81	48.00	22.19	2,508
13-14	55.50	48.00	23.75	2,488
14-15	55.64	48.00	22.33	2,349
15-16	55.93	48.00	23.21	2,807
16-17	55.55	48.00	21.70	3,240

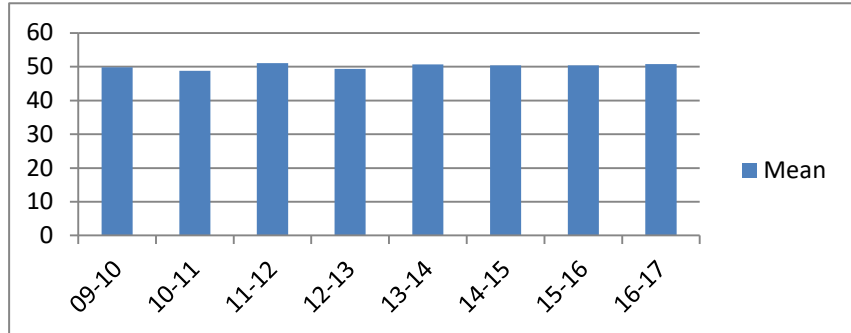


# Average Probation Lengths in Months by Felony Class

Note: Column N indicates the number of felony convictions. Individual offenders can have multiple convictions. Incarceration includes lifewithout parole and death sentences. Probation includes sentences to community corrections.

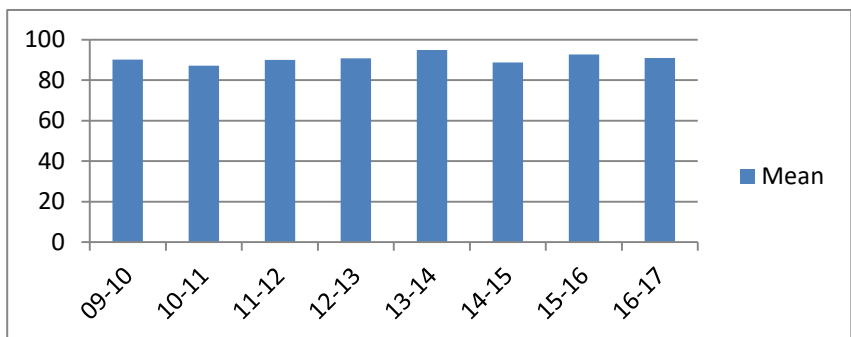
## Average Probation Length - Class C - Standard Offenders

Fiscal Year	Mean	Median	Standard Deviation	N
09-10	49.80	48.00	18.83	1,909
10-11	48.77	48.00	17.75	2,172
11-12	51.05	48.00	16.62	2,296
12-13	49.37	48.00	16.66	2,252
13-14	50.71	48.00	18.04	2,243
14-15	50.41	48.00	16.67	2,045
15-16	50.38	48.00	16.64	2,450
16-17	50.81	48.00	16.09	2,881



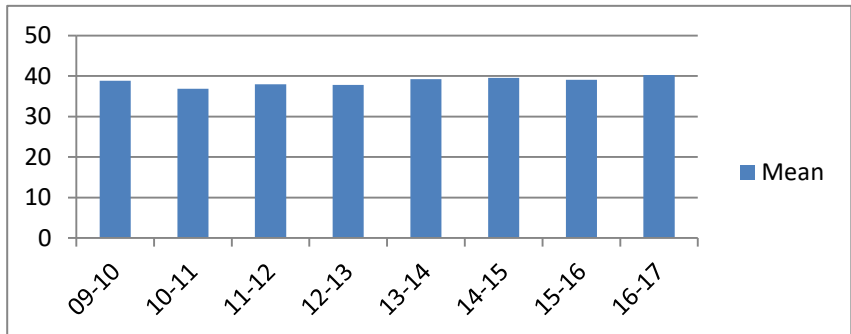
## Average Probation Length - Class C - Multiple Offenders

Fiscal Year	Mean	Median	Standard Deviation	N
09-10	90.19	93.00	25.87	144
10-11	87.14	84.00	22.32	160
11-12	89.93	84.00	24.78	171
12-13	90.75	96.00	22.32	230
13-14	94.84	96.00	22.14	208
14-15	88.66	82.08	21.70	258
15-16	92.68	96.00	19.02	288
16-17	90.85	96.00	21.04	319



## Average Probation Length - Class D - All Offenders

Fiscal Year	Mean	Median	Standard Deviation	N
09-10	38.80	36.00	23.02	3,362
10-11	36.87	36.00	16.78	3,413
11-12	37.99	36.00	21.36	3,635
12-13	37.82	36.00	19.19	3,708
13-14	39.19	36.00	20.90	3,574
14-15	39.51	36.00	19.01	3,482
15-16	39.04	36.00	18.33	3,362
16-17	40.25	36.00	20.12	3,709



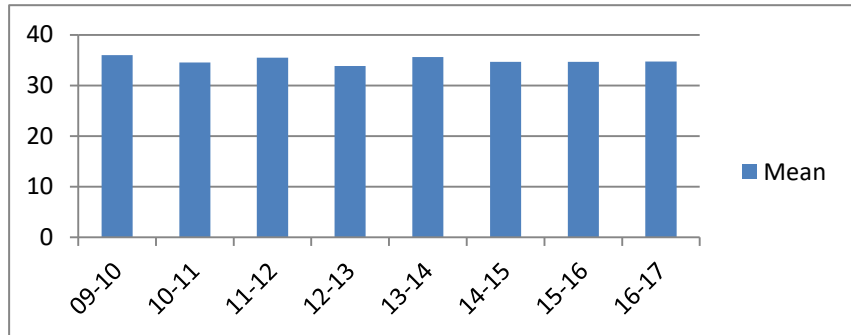


# Average Probation Lengths in Months by Felony Class

Note: Column N indicates the number of felony convictions. Individual offenders can have multiple convictions. Incarceration includes lifewithout parole and death sentences. Probation includes sentences to community corrections.

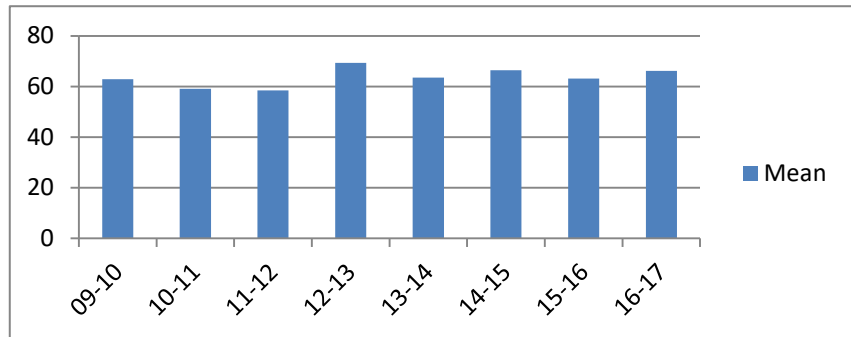
## Average Probation Length - Class D - Standard Offenders

Fiscal Year	Mean	Median	Standard Deviation	N
09-10	35.98	36.00	19.55	3,124
10-11	34.54	36.00	13.77	3,150
11-12	35.49	36.00	18.71	3,330
12-13	33.81	36.00	12.82	3,350
13-14	35.62	36.00	16.26	3,229
14-15	34.67	36.00	12.20	3,028
15-16	34.64	36.00	12.44	2,937
16-17	34.70	36.00	12.33	3,164



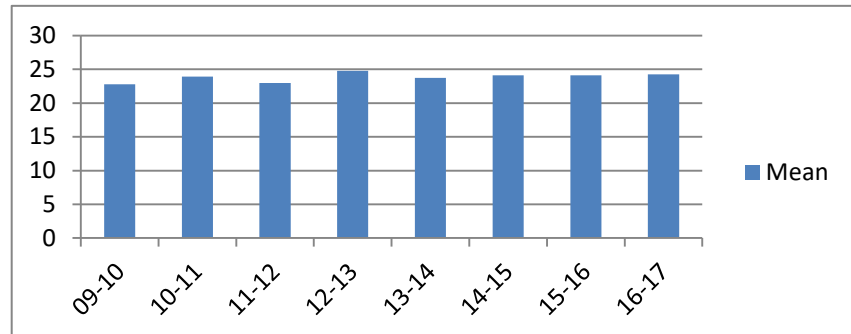
## Average Probation Length - Class D - Multiple Offenders

Fiscal Year	Mean	Median	Standard Deviation	N
09-10	62.91	60.00	20.35	174
10-11	59.06	60.00	17.48	223
11-12	58.40	54.00	23.12	251
12-13	69.32	72.00	20.41	309
13-14	63.53	60.00	17.27	276
14-15	66.47	60.00	20.49	383
15-16	63.07	60.00	17.87	349
16-17	66.10	60.00	19.18	443



## Average Probation Length - Class E - All Offenders

Fiscal Year	Mean	Median	Standard Deviation	N
09-10	22.77	24.00	12.22	4,003
10-11	23.90	24.00	15.26	3,838
11-12	22.95	24.00	12.12	3,727
12-13	24.77	24.00	14.92	3,978
13-14	23.73	24.00	12.41	3,983
14-15	24.10	24.00	13.07	3,763
15-16	24.11	24.00	12.18	3,980
16-17	24.25	24.00	12.70	4,171

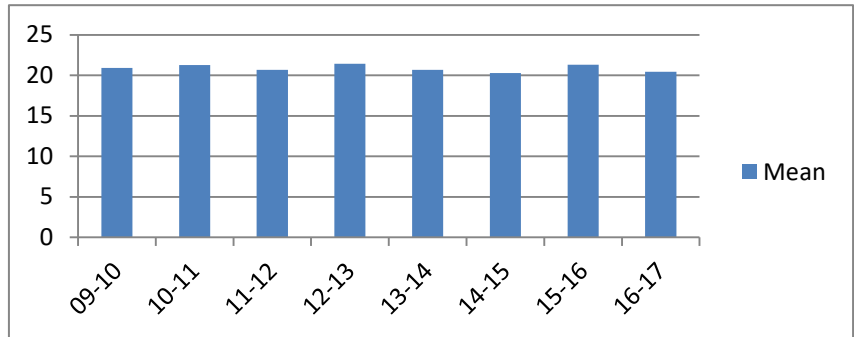


# Average Probation Lengths in Months by Felony Class

Note: Column N indicates the number of felony convictions. Individual offenders can have multiple convictions. Incarceration includes lifewithout parole and death sentences. Probation includes sentences to community corrections.

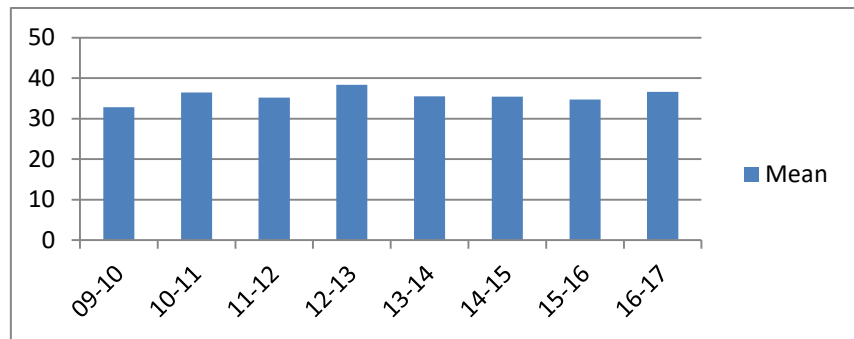
**Average Probation Length - Class E - Standard Offenders**

Fiscal Year	Mean	Median	Standard Deviation	N
09-10	20.89	24.00	9.98	3,596
10-11	21.27	24.00	12.99	3,361
11-12	20.66	24.00	9.15	3,297
12-13	21.41	24.00	11.91	3,377
13-14	20.68	24.00	8.50	3,398
14-15	20.27	24.00	9.13	3,057
15-16	21.32	24.00	8.47	3,389
16-17	20.42	24.00	7.43	3,457



**Average Probation Length - Class E - Multiple Offenders**

Fiscal Year	Mean	Median	Standard Deviation	N
09-10	32.79	24.50	10.04	318
10-11	36.47	36.00	10.48	388
11-12	35.17	36.00	10.45	349
12-13	38.34	42.00	10.69	470
13-14	35.53	36.00	10.95	449
14-15	35.46	36.00	10.67	558
15-16	34.69	36.00	10.50	485
16-17	36.61	36.00	11.04	541

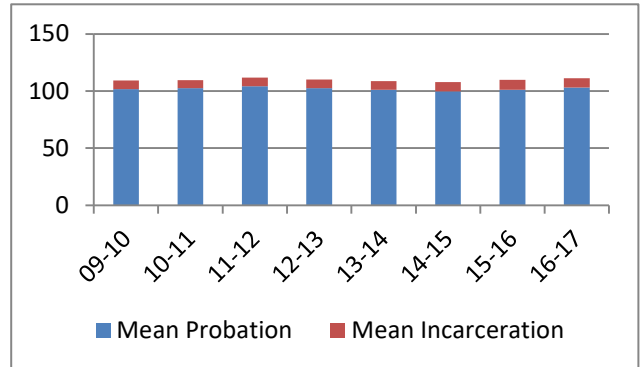


## Average Split Sentence Lengths in Months by Felony Class

Note: Column N indicates the number of felony convictions. Individual offenders can have multiple convictions. Incarceration includes life without parole and death sentences. Probation includes sentences to community corrections.

**Average Sentence Length - Felony Class B - All Offenders**

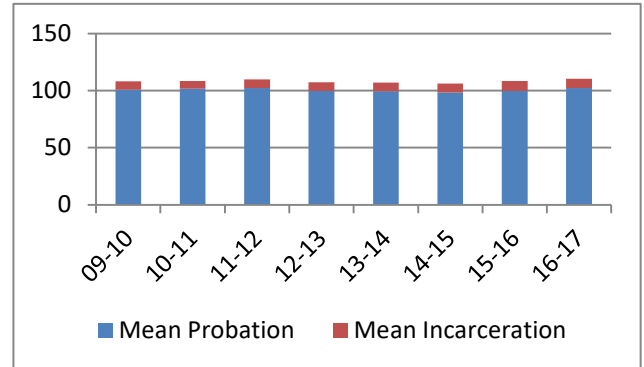
Fiscal Year	Months of Incarceration				Months of Probation			
	Mean	Median	Standard Deviation	N	Mean	Median	Standard Deviation	N
09-10	7.6	6.6	4.3	393	101.8	96.0	19.6	393
10-11	6.9	6.0	4.4	515	102.6	96.0	19.9	515
11-12	7.7	8.9	4.2	449	104.2	96.0	20.6	449
12-13	7.7	6.7	4.9	466	102.5	96.0	22.9	466
13-14	7.6	6.0	4.1	382	101.1	96.0	18.6	382
14-15	8.0	9.0	4.1	459	99.7	96.0	18.2	459
15-16	8.6	10.1	3.8	488	101.2	96.0	17.4	488
16-17	8.0	7.0	4.0	783	103.2	96.0	17.0	783



frequencies.

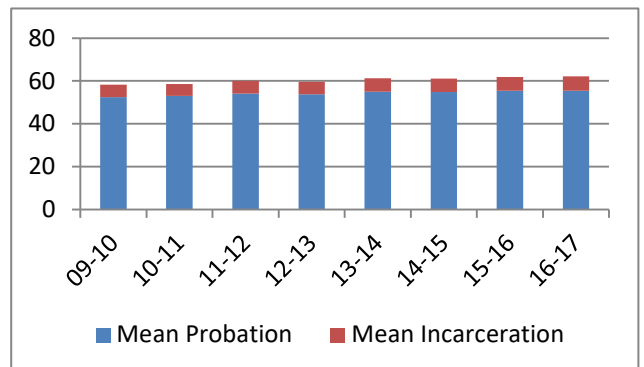
**Average Sentence Length - Felony Class B - Standard Offenders**

Fiscal Year	Months of Incarceration				Months of Probation			
	Mean	Median	Standard Deviation	N	Mean	Median	Standard Deviation	N
09-10	7.5	6.0	4.3	381	100.7	96.0	18.5	381
10-11	6.9	6.0	4.4	500	101.6	96.0	19.0	500
11-12	7.6	8.0	4.2	424	102.3	96.0	17.9	424
12-13	7.6	6.2	4.9	447	99.8	96.0	15.4	447
13-14	7.5	6.0	4.1	368	99.3	96.0	15.5	368
14-15	8.0	9.0	4.1	444	98.2	96.0	15.3	444
15-16	8.5	10.0	3.8	470	99.8	96.0	15.0	470
16-17	8.0	6.4	4.0	771	102.3	96.0	14.6	771



**Average Sentence Length - Class C - All Offenders**

Fiscal Year	Months of Incarceration				Months of Probation			
	Mean	Median	Standard Deviation	N	Mean	Median	Standard Deviation	N
09-10	5.9	5.1	4.3	1,314	52.4	48.0	21.8	1,314
10-11	5.5	4.0	4.1	1,467	53.1	48.0	22.7	1,467
11-12	6.0	5.9	4.2	1,519	54.1	48.0	22.7	1,519
12-13	5.9	4.9	4.1	1,441	53.7	48.0	21.0	1,441
13-14	6.3	5.9	4.2	1,447	54.9	48.0	21.6	1,447
14-15	6.3	5.9	4.1	1,431	54.8	48.0	22.1	1,431
15-16	6.5	6.0	4.1	1,710	55.4	48.0	21.8	1,710
16-17	6.7	6.0	4.0	2,014	55.5	48.0	22.2	2,014

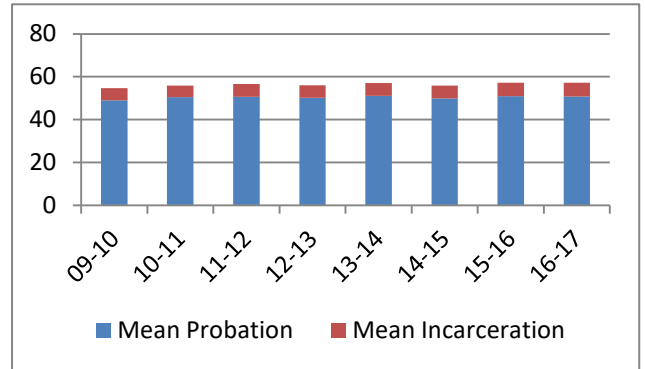


## Average Split Sentence Lengths in Months by Felony Class

Note: Column N indicates the number of felony convictions. Individual offenders can have multiple convictions. Incarceration includes life without parole and death sentences. Probation includes sentences to community corrections.

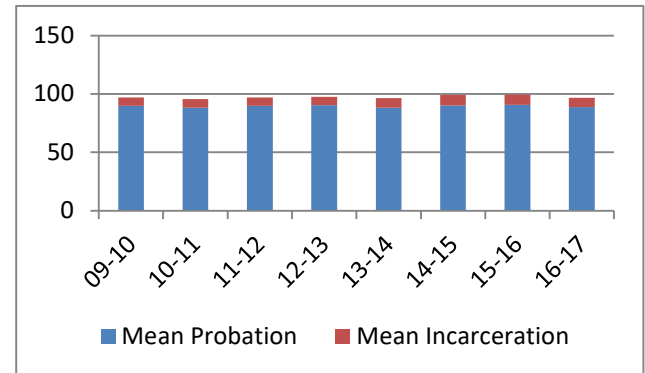
**Average Sentence Length - Class C - Standard Offenders**

Fiscal Year	Months of Incarceration				Months of Probation			
	Mean	Median	Standard Deviation	N	Mean	Median	Standard Deviation	N
09-10	5.8	5.0	4.3	1,207	49.0	48.0	17.9	1,207
10-11	5.3	4.0	4.1	1,365	50.5	48.0	20.0	1,365
11-12	5.9	5.0	4.2	1,399	50.6	48.0	19.0	1,399
12-13	5.8	4.1	4.0	1,314	50.2	48.0	17.4	1,314
13-14	6.1	5.9	4.1	1,303	51.0	48.0	17.4	1,303
14-15	5.9	5.0	4.0	1,257	50.0	48.0	16.2	1,257
15-16	6.2	6.0	4.0	1,528	51.0	48.0	16.8	1,528
16-17	6.5	6.0	4.0	1,786	50.7	48.0	16.5	1,786



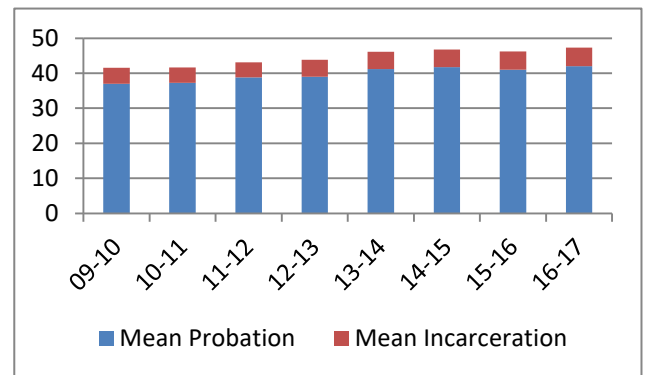
**Average Sentence Length - Class C - Multiple Offenders**

Fiscal Year	Months of Incarceration				Months of Probation			
	Mean	Median	Standard Deviation	N	Mean	Median	Standard Deviation	N
09-10	7.1	7.2	4.6	99	89.9	89.0	22.4	99
10-11	7.4	6.6	4.2	87	88.3	91.2	22.0	87
11-12	7.3	9.0	4.3	107	89.7	96.0	18.7	107
12-13	7.1	6.0	4.5	119	90.5	93.0	20.0	119
13-14	8.2	9.0	4.0	130	88.2	84.0	22.4	130
14-15	8.9	12.0	4.0	153	90.1	92.0	24.0	153
15-16	8.7	12.0	3.9	163	90.6	96.0	22.3	163
16-17	8.0	8.3	4.1	192	88.8	88.8	20.6	192



**Average Sentence Length - Class D - All Offenders**

Fiscal Year	Months of Incarceration				Months of Probation			
	Mean	Median	Standard Deviation	N	Mean	Median	Standard Deviation	N
09-10	4.6	3.3	3.7	1,529	37.0	36.0	16.7	1,529
10-11	4.3	3.0	3.6	1,644	37.3	36.0	18.5	1,644
11-12	4.3	3.0	3.5	1,605	38.8	36.0	18.2	1,605
12-13	4.8	3.9	3.8	1,642	39.0	36.0	21.0	1,642
13-14	4.9	3.9	3.9	1,540	41.2	36.0	20.4	1,540
14-15	5.0	3.9	3.9	1,522	41.7	36.0	22.6	1,522
15-16	5.2	3.9	3.8	1,511	41.0	36.0	19.6	1,511
16-17	5.3	4.0	3.9	1,619	42.0	36.0	22.2	1,619

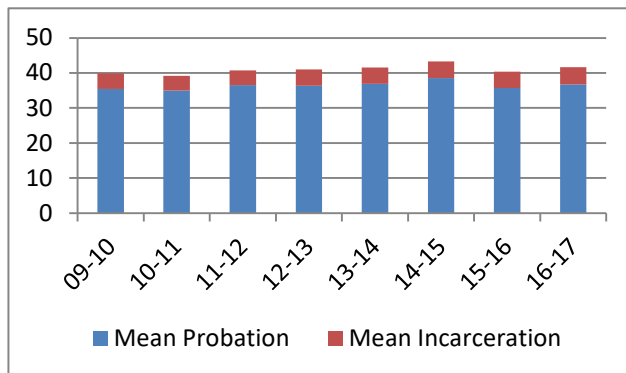


## Average Split Sentence Lengths in Months by Felony Class

Note: Column N indicates the number of felony convictions. Individual offenders can have multiple convictions. Incarceration includes life without parole and death sentences. Probation includes sentences to community corrections.

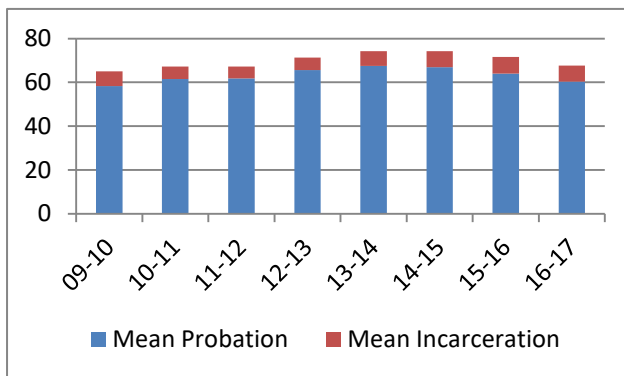
**Average Sentence Length - Class D - Standard Offenders**

Fiscal Year	Months of Incarceration				Months of Probation			
	Mean	Median	Standard Deviation	N	Mean	Median	Standard Deviation	N
09-10	4.5	3.3	3.7	1,453	35.4	36.0	14.4	1,453
10-11	4.3	3.0	3.6	1,537	35.0	35.0	15.3	1,537
11-12	4.2	3.0	3.4	1,482	36.6	36.0	15.6	1,482
12-13	4.7	3.3	3.8	1,519	36.3	36.0	18.1	1,519
13-14	4.6	3.3	3.7	1,360	36.9	36.0	15.2	1,360
14-15	4.8	3.4	3.7	1,372	38.5	36.0	20.3	1,372
15-16	4.6	3.3	3.6	1,275	35.7	36.0	12.8	1,275
16-17	4.9	3.9	3.7	1,387	36.7	36.0	14.1	1,387



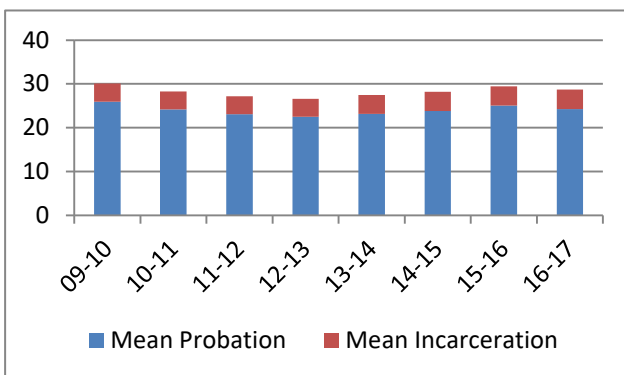
**Average Sentence Length - Class D - Multiple Offenders**

Fiscal Year	Months of Incarceration				Months of Probation			
	Mean	Median	Standard Deviation	N	Mean	Median	Standard Deviation	N
09-10	6.7	6.0	4.1	64	58.3	54.6	19.0	64
10-11	5.7	5.0	3.7	87	61.5	58.2	19.3	87
11-12	5.4	4.0	3.8	107	61.8	60.0	19.5	107
12-13	5.7	4.9	4.1	100	65.7	67.6	20.0	100
13-14	6.8	6.0	4.3	143	67.4	72.0	18.9	143
14-15	7.4	6.0	4.7	136	66.9	70.5	17.5	136
15-16	7.5	6.0	3.9	195	64.1	60.0	19.6	195
16-17	7.3	6.0	4.3	173	60.3	60.0	19.0	173



**Average Sentence Length - Class E - All Offenders**

Fiscal Year	Months of Incarceration				Months of Probation			
	Mean	Median	Standard Deviation	N	Mean	Median	Standard Deviation	N
09-10	4.1	3.3	3.2	1,908	25.9	23.0	21.9	1,908
10-11	4.1	3.0	3.1	1,940	24.2	24.0	14.2	1,940
11-12	4.1	3.0	3.2	1,808	23.1	23.0	13.5	1,808
12-13	4.1	3.0	3.1	1,768	22.5	22.5	14.2	1,768
13-14	4.3	3.0	3.2	1,493	23.1	24.0	13.0	1,493
14-15	4.4	3.7	3.3	1,616	23.8	24.0	13.8	1,616
15-16	4.4	3.0	3.4	1,784	25.0	24.0	16.6	1,784
16-17	4.5	3.1	3.4	1,955	24.2	24.0	12.7	1,955

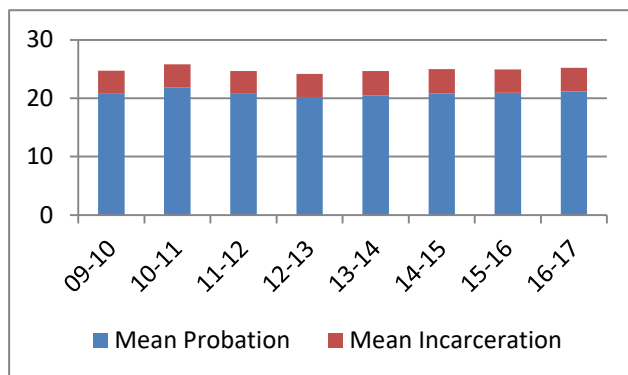


## Average Split Sentence Lengths in Months by Felony Class

Note: Column N indicates the number of felony convictions. Individual offenders can have multiple convictions. Incarceration includes life without parole and death sentences. Probation includes sentences to community corrections.

**Average Sentence Length - Class E - Standard Offenders**

Fiscal Year	Months of Incarceration				Months of Probation			
	Mean	Median	Standard Deviation	N	Mean	Median	Standard Deviation	N
09-10	3.9	3.0	3.1	1,666	20.8	21.0	11.7	1,666
10-11	3.9	3.0	3.0	1,692	21.9	23.0	12.3	1,692
11-12	3.9	3.0	3.0	1,574	20.8	21.0	11.2	1,574
12-13	3.9	3.0	2.9	1,575	20.2	21.0	10.4	1,575
13-14	4.2	3.0	3.2	1,295	20.5	22.2	10.5	1,295
14-15	4.1	3.0	3.1	1,383	20.8	23.0	11.2	1,383
15-16	4.0	3.0	3.1	1,488	20.9	23.6	10.0	1,488
16-17	4.0	3.0	3.1	1,638	21.1	24.0	9.4	1,638



**Average Sentence Length - Class E - Multiple Offenders**

Fiscal Year	Months of Incarceration				Months of Probation			
	Mean	Median	Standard Deviation	N	Mean	Median	Standard Deviation	N
09-10	5.6	6.0	3.1	204	62.2	48.0	40.1	204
10-11	4.9	4.0	3.6	205	35.3	36.0	12.6	205
11-12	5.1	4.0	3.9	197	34.7	36.0	14.4	197
12-13	5.5	4.9	3.8	146	34.4	36.0	11.7	146
13-14	4.9	4.9	3.2	159	35.9	36.0	10.6	159
14-15	5.9	5.0	3.8	185	37.0	36.0	10.9	185
15-16	6.4	5.9	4.1	235	41.8	36.0	26.3	235
16-17	6.4	5.9	3.9	262	36.5	36.0	11.6	262

