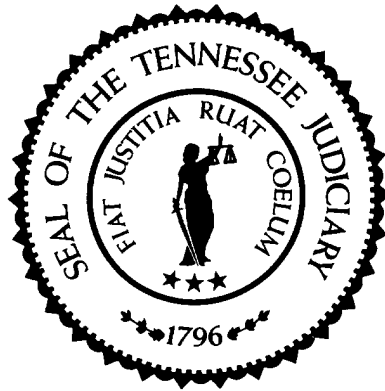


Sentencing Practices in Tennessee



Administrative Office of the Courts

Information for Cases Sentenced Between
July 1, 2010 and June 30, 2018

TDOC Data Extracted: October 2018
Released: November 2018

Sentencing Practices in Tennessee Contents

Methodology	1
Sentence Type Information	
Class A	3
Class B	3
Class C	4
Class D	4
Class E	4
Average Incarceration Lengths in Months	
Class A	5
Rape of Child	6
Second Degree Murder	6
Especially Aggravated Kidnapping	7
Class B	8
Schedule II Cocaine	9
Aggravated Robbery	10
Aggravated Sexual Battery	11
Class C	11
Aggravated Burglary	12
Aggravated Assault	13
Schedule II Cocaine < ½ Gram	14
Schedule II Drugs: Max \$100,000 Fine	15
Class D	16
Theft: \$1,000 to \$10,000	17
Burglary Other Than Habitation	18
Identity Theft	19
Obtain Drugs by Fraud	20
Class E	21
Forgery: Up to \$1,000	22
Burglary: Auto	23
Theft: \$500 to \$1,000	24
Schedule VI Drugs: Not < ½ Ounce	25
Habitual Traffic Offender	26
Failure to Appear (Felony)	27
Average Probation Lengths in Months	
Class B	29
Class C	29
Class D	30
Class E	31
Average Split Sentence Lengths in Months	
Class B	33
Class C	33
Class D	34
Class E	35

Methodology

The data used in evaluating sentencing practices comes from the Tennessee Department of Correction (TDOC). TDOC data was selected because individual offense data is captured by the department. Each offense sentence is recorded individually, even in cases of multiple offense convictions, eliminating the potential confusion in determining sentence lengths created by these multiple offense convictions. To establish a baseline for comparison purposes, data from multiple years was queried. The initial focus of this analysis consisted of cases where the defendants received incarceration only, either in a TDOC facility or a local jail, however alternative sentence information was gathered as well. This data is not a sample, but is the entire population of sentences captured by the TDOC during the time frame analyzed.

Sentence lengths will be reported for standard offenders, multiple offenders and for all offender types as a group. Standard and multiple offender defendant types were chosen because they comprise over 90% of all sentences in Tennessee.

Specific offenses were included in analysis first by choosing the top three most frequently occurring offenses in each felony class, then by a combination of occurrence frequency, overall impact on sentence length and by the increasing in frequency of the occurrence of the offense (i.e. the offense is happening in increasing amounts, but was not historically happening in large numbers). The following offenses make nearly 70% of convicted offenses and are included in the statistic table report.

- Class A
 - Rape of a Child
 - Second Degree Murder
 - Especially Aggravated Kidnapping
- Class B
 - Schedule II Drugs: Cocaine
 - Aggravated Robbery
 - Aggravated Sexual Battery
- Class C
 - Aggravated Burglary
 - Aggravated Assault
 - Schedule II Drugs: Cocaine < 1/2 Gram
 - Schedule II Drugs: Up to \$100,000 Fine
- Class D
 - Theft: \$1,000 to \$10,000
 - Burglary: Other than Habitation or Auto
 - Identity Theft
 - Obtain Drugs by Fraud
- Class E
 - Forgery: Up to \$1,000
 - Burglary: Auto
 - Theft: \$500 to \$1,000
 - Schedule VI Drugs: Not Less than ½ Ounce
 - Habitual Traffic Offender
 - Failure to Appear (Felony)

Data for each felony class and defendant type (standard, multiple and all) are presented as well. The tables for the offenses listed and for the felony classes display the mean and median sentence lengths in months, the standard deviation and the number of convictions for each year reported.

Note

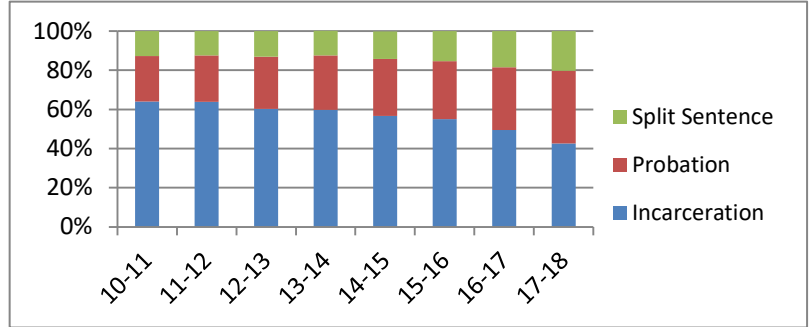
The numbers presented here and in previous reports may vary for the same years. Discrepancies are due in part to late reporting to the Tennessee Department of Corrections and parole violations over time. Also, due to late reporting to TDOC, the total population in recent years may not be included in the analysis at the time of publication.

Sentence Type Information

Note: Column N Indicates the number of felony convictions. Individual offenders can have multiple convictions. Incarceration includes life without parole and death sentences. Probation includes sentences to community corrections.

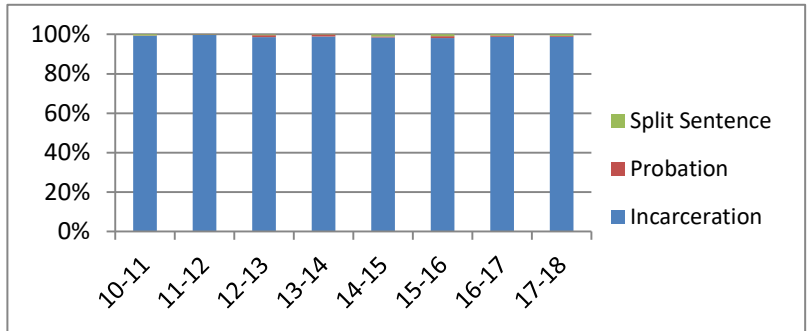
Percent of Sentence Type - All Felony Classes - All Offenders

Fiscal Year	Incarceration	Probation	Split Sentence	N
	Percent	Percent	Percent	
10-11	64.0%	23.3%	12.7%	43,676
11-12	63.8%	23.8%	12.4%	43,332
12-13	60.3%	26.6%	13.1%	40,615
13-14	59.7%	27.8%	12.6%	37,772
14-15	56.7%	29.0%	14.2%	34,483
15-16	55.0%	29.6%	15.4%	34,826
16-17	49.5%	32.0%	18.5%	34,616
17-18	42.6%	37.1%	20.3%	32,312



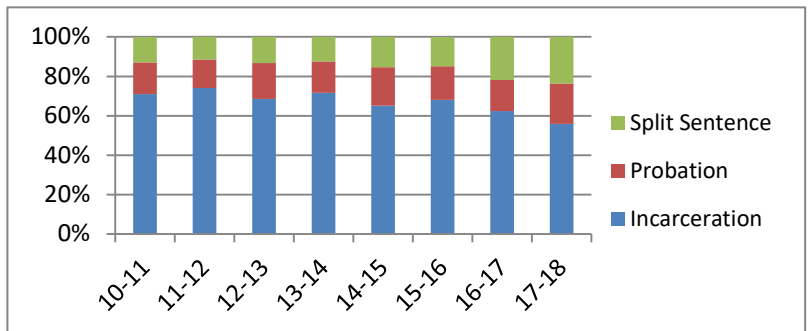
Percent of Sentence Type - Felony Class A - All Offenders

Fiscal Year	Incarceration	Probation	Split Sentence	N
	Percent	Percent	Percent	
10-11	99.2%	0.2%	0.6%	527
11-12	99.7%	0.2%	0.2%	650
12-13	98.6%	1.0%	0.3%	583
13-14	99.0%	0.9%	0.2%	587
14-15	98.5%	0.4%	1.0%	481
15-16	98.2%	0.9%	0.9%	552
16-17	98.7%	0.7%	0.6%	544
17-18	98.8%	0.5%	0.7%	577



Percent of Sentence Type - Felony Class B - All Offenders

Fiscal Year	Incarceration	Probation	Split Sentence	N
	Percent	Percent	Percent	
10-11	71.0%	16.0%	12.9%	3,847
11-12	74.0%	14.6%	11.4%	3,876
12-13	68.5%	18.2%	13.4%	3,460
13-14	71.7%	15.9%	12.4%	3,093
14-15	65.2%	19.4%	15.4%	3,008
15-16	68.1%	17.1%	14.7%	3,194
16-17	62.3%	15.9%	21.8%	3,576
17-18	55.9%	20.4%	23.7%	3,705

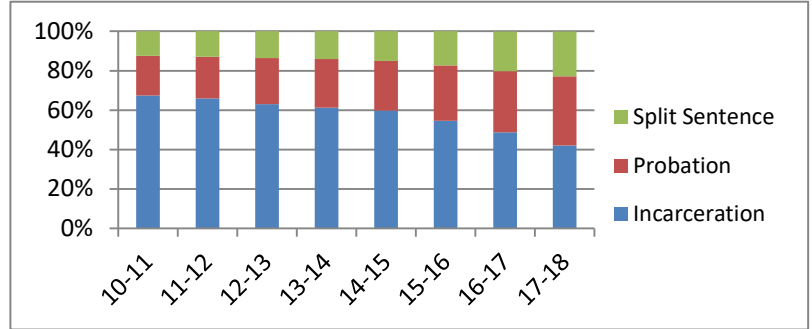


Sentence Type Information

Note: Column N Indicates the number of felony convictions. Individual offenders can have multiple convictions. Incarceration includes life without parole and death sentences. Probation includes sentences to community corrections.

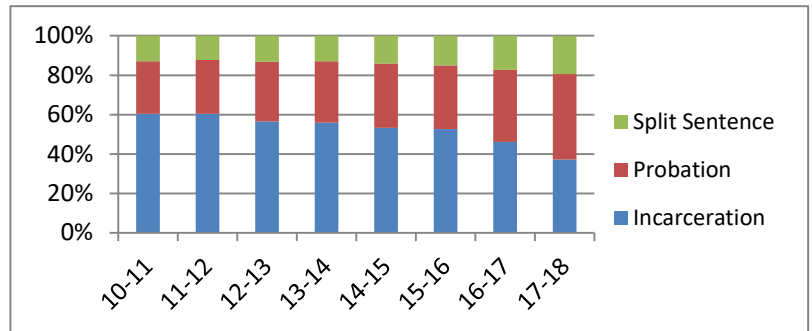
Percent of Sentence Type - Felony Class C - All Offenders

Fiscal Year	Incarceration	Probation	Split Sentence	N
	Percent	Percent	Percent	
10-11	67.4%	20.1%	12.5%	11,668
11-12	66.0%	21.1%	12.9%	11,639
12-13	63.0%	23.5%	13.6%	10,569
13-14	61.3%	24.7%	14.1%	10,070
14-15	59.8%	25.1%	15.1%	9,169
15-16	54.6%	28.1%	17.3%	9,634
16-17	48.8%	31.0%	20.1%	9,945
17-18	42.0%	35.1%	22.8%	9,702



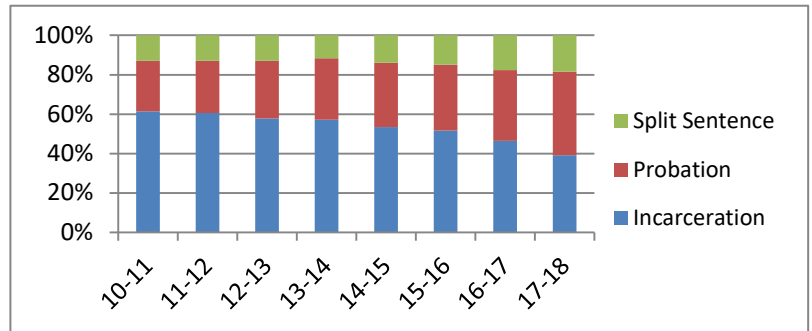
Percent of Sentence Type - Felony Class D - All Offenders

Fiscal Year	Incarceration	Probation	Split Sentence	N
	Percent	Percent	Percent	
10-11	60.5%	26.6%	12.9%	12,732
11-12	60.5%	27.3%	12.2%	13,179
12-13	56.6%	30.1%	13.3%	12,340
13-14	55.8%	31.2%	13.0%	11,379
14-15	53.3%	32.6%	14.1%	10,475
15-16	52.7%	32.3%	15.1%	9,942
16-17	46.2%	36.5%	17.4%	9,527
17-18	37.2%	43.3%	19.4%	7,558



Percent of Sentence Type - Felony Class E - All Offenders

Fiscal Year	Incarceration	Probation	Split Sentence	N
	Percent	Percent	Percent	
10-11	61.4%	25.6%	13.0%	14,902
11-12	60.6%	26.5%	12.9%	13,988
12-13	57.9%	29.2%	12.9%	13,663
13-14	57.1%	31.3%	11.6%	12,643
14-15	53.4%	32.7%	13.9%	11,350
15-16	51.7%	33.4%	14.9%	11,503
16-17	46.5%	35.8%	17.7%	11,023
17-18	39.2%	42.3%	18.5%	10,770

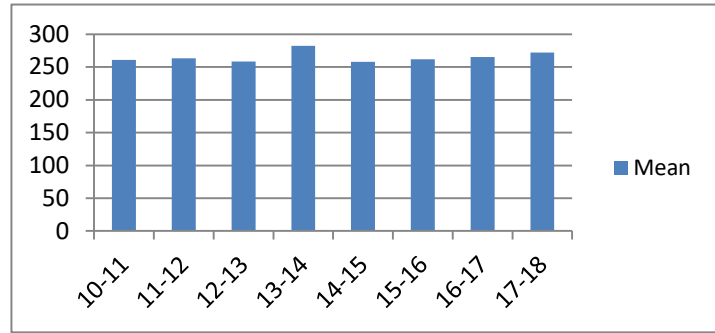


Average Incarceration Lengths in Months by Felony Class and Offense

Note: Column N indicates the number of felony convictions. Individual offenders can have multiple convictions. Incarceration includes life without parole and death sentences. Probation includes sentences to community corrections.

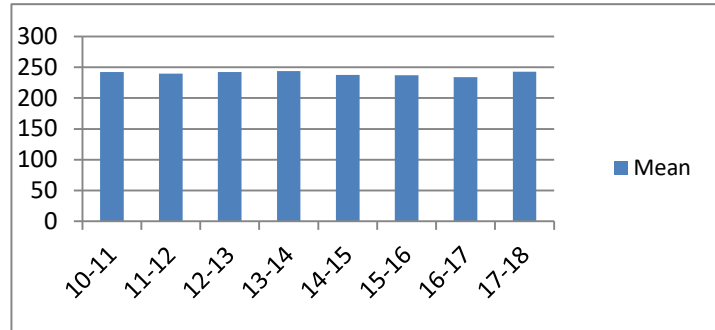
Average Incarceration Length - Class A - All Offenders

Fiscal Year	Mean	Median	Standard Deviation	N
10-11	260.65	240.00	89.88	521
11-12	263.03	240.00	97.19	646
12-13	258.07	240.00	83.67	572
13-14	282.20	264.00	117.38	581
14-15	258.01	240.00	89.33	473
15-16	261.66	240.00	94.08	541
16-17	265.33	240.00	96.20	533
17-18	271.78	264.00	91.62	569



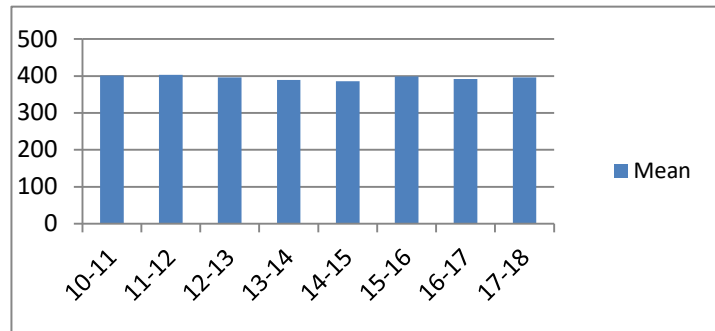
Average Incarceration Length - Class A - Standard Offenders

Fiscal Year	Mean	Median	Standard Deviation	N
10-11	242.18	240.00	49.44	429
11-12	240.00	240.00	48.23	496
12-13	242.40	240.00	50.88	477
13-14	243.64	240.00	49.02	421
14-15	237.48	240.00	53.44	372
15-16	237.08	240.00	53.59	426
16-17	234.28	240.00	51.45	410
17-18	242.96	240.00	48.23	444



Average Incarceration Length - Class A - Multiple Offenders

Fiscal Year	Mean	Median	Standard Deviation	N
10-11	401.19	396.00	62.50	52
11-12	403.36	384.00	56.59	75
12-13	396.42	420.00	86.35	57
13-14	389.11	360.00	77.29	101
14-15	385.97	384.00	104.49	67
15-16	398.76	384.00	68.69	76
16-17	391.80	360.00	54.86	90
17-18	396.13	360.00	58.75	90

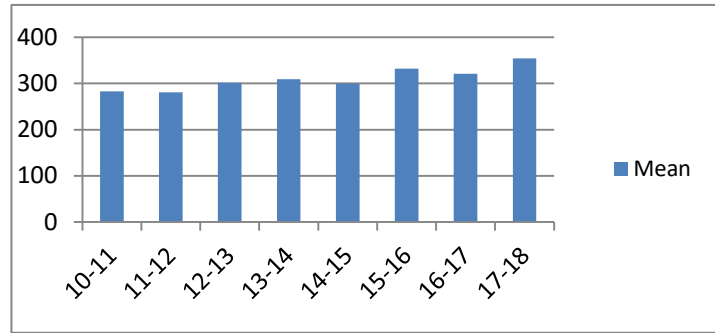


Average Incarceration Lengths in Months by Felony Class and Offense

Note: Column N indicates the number of felony convictions. Individual offenders can have multiple convictions. Incarceration includes life without parole and death sentences. Probation includes sentences to community corrections.

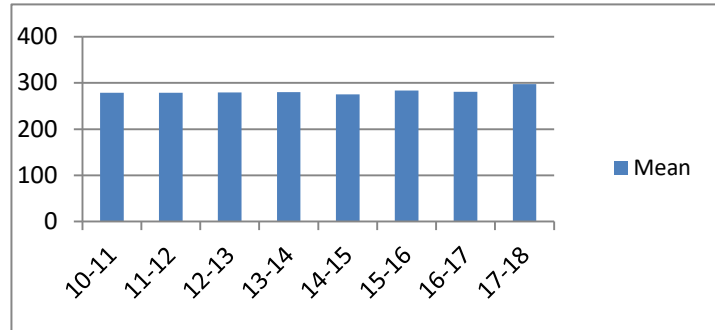
Average Incarceration Length - Rape of a Child - All Offenders

Fiscal Year	Mean	Median	Standard Deviation	N
10-11	283.13	300.00	47.07	90
11-12	280.99	300.00	41.09	101
12-13	301.93	300.00	66.23	81
13-14	309.51	300.00	62.40	111
14-15	299.68	300.00	63.47	75
15-16	332.40	300.00	92.71	70
16-17	321.15	300.00	66.83	118
17-18	354.42	300.00	74.02	99



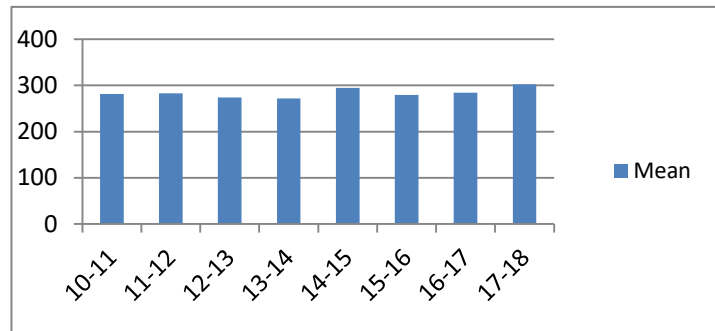
Average Incarceration Length - Rape of a Child - Standard Offenders

Fiscal Year	Mean	Median	Standard Deviation	N
10-11	279.07	300.00	30.66	84
11-12	279.00	300.00	36.08	100
12-13	279.40	300.00	42.49	67
13-14	280.31	300.00	41.12	78
14-15	275.58	300.00	42.24	57
15-16	283.81	300.00	33.01	43
16-17	280.56	300.00	41.54	71
17-18	297.74	300.00	11.54	53



Average Incarceration Length - Second Degree Murder - All Offenders

Fiscal Year	Mean	Median	Standard Deviation	N
10-11	281.39	255.00	96.38	108
11-12	283.02	240.00	102.48	118
12-13	274.19	264.00	90.69	83
13-14	271.87	264.00	73.68	93
14-15	294.78	300.00	104.05	77
15-16	279.27	240.00	96.97	111
16-17	284.00	240.00	96.37	105
17-18	302.13	300.00	103.04	96



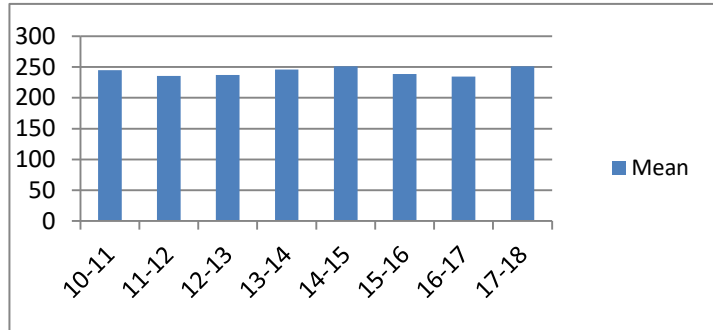
low occurrence frequencies.

Average Incarceration Lengths in Months by Felony Class and Offense

Note: Column N indicates the number of felony convictions. Individual offenders can have multiple convictions. Incarceration includes life without parole and death sentences. Probation includes sentences to community corrections.

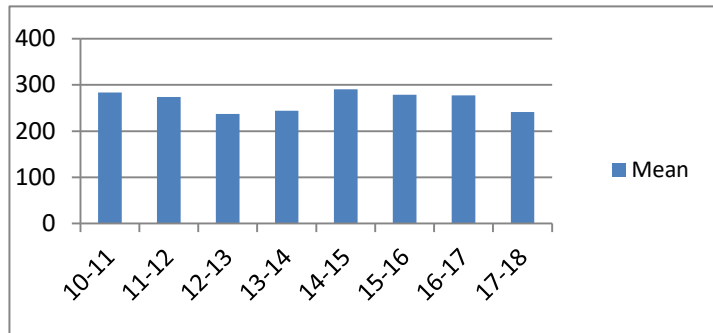
Average Incarceration Length - Second Degree Murder - Standard Offenders

Fiscal Year	Mean	Median	Standard Deviation	N
10-11	244.88	240.00	43.00	75
11-12	235.67	240.00	44.38	79
12-13	237.19	240.00	49.31	62
13-14	246.08	240.00	47.12	73
14-15	251.25	240.00	44.72	48
15-16	238.52	240.00	44.74	79
16-17	234.40	240.00	46.74	75
17-18	250.98	252.00	45.52	59



Average Incarceration Length - Especially Aggravated Kidnapping - All Offenders

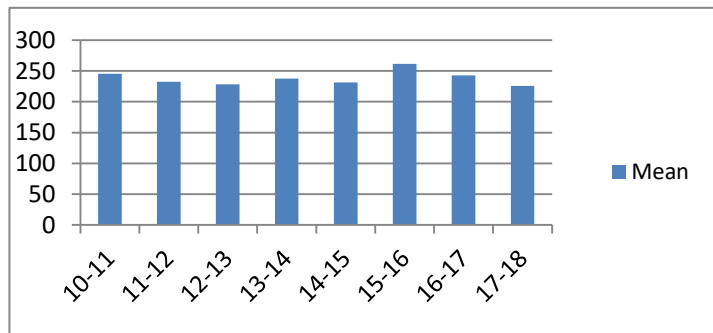
Fiscal Year	Mean	Median	Standard Deviation	N
10-11	283.35	264.00	106.03	49
11-12	274.16	240.00	117.01	88
12-13	237.26	240.00	67.66	68
13-14	243.86	240.00	88.41	42
14-15	290.57	264.00	117.33	35
15-16	278.78	300.00	100.93	67
16-17	277.69	240.00	135.07	39
17-18	241.20	246.00	61.78	30



low occurrence frequencies.

Average Incarceration Length - Especially Aggravated Kidnapping - Standard Offenders

Fiscal Year	Mean	Median	Standard Deviation	N
10-11	245.27	240.00	48.30	41
11-12	232.21	240.00	45.17	67
12-13	228.20	240.00	46.76	61
13-14	237.79	240.00	44.19	38
14-15	231.36	240.00	53.28	25
15-16	261.80	300.00	56.78	60
16-17	243.09	240.00	38.76	35
17-18	225.78	216.00	41.17	27

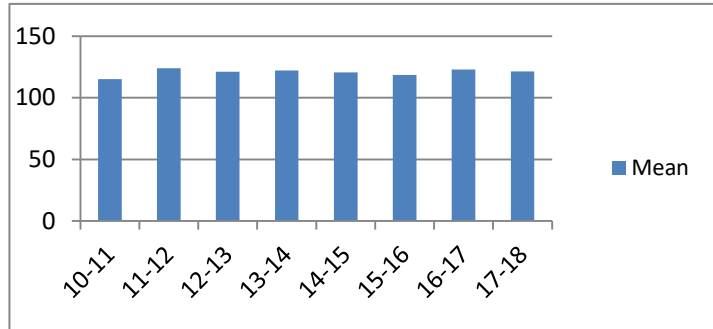


Average Incarceration Lengths in Months by Felony Class and Offense

Note: Column N indicates the number of felony convictions. Individual offenders can have multiple convictions. Incarceration includes life without parole and death sentences. Probation includes sentences to community corrections.

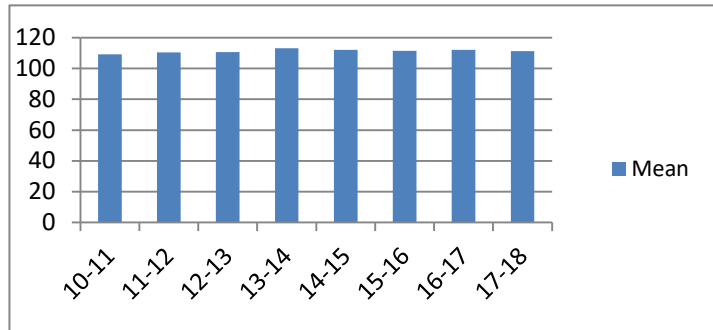
Average Incarceration Length - Felony Class B - All Offenders

Fiscal Year	Mean	Median	Standard Deviation	N
10-11	115.18	96.00	34.26	2,731
11-12	124.04	108.00	44.61	2,864
12-13	121.06	108.00	41.50	2,370
13-14	122.19	120.00	40.13	2,217
14-15	120.69	108.00	36.67	1,962
15-16	118.53	108.00	36.44	2,174
16-17	122.99	120.00	39.29	2,228
17-18	121.46	108.00	39.46	2,071



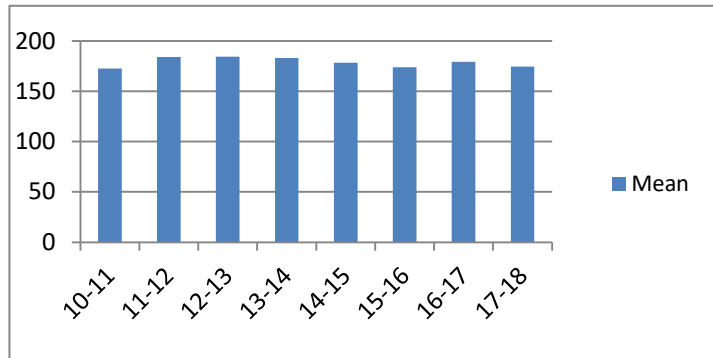
Average Incarceration Length - Felony Class B - Standard Offenders

Fiscal Year	Mean	Median	Standard Deviation	N
10-11	109.12	96.00	18.07	2,247
11-12	110.48	96.00	20.05	2,246
12-13	110.65	96.00	18.65	1,997
13-14	113.17	108.00	20.88	1,889
14-15	112.10	108.00	20.13	1,658
15-16	111.57	96.00	18.99	1,811
16-17	112.14	108.00	20.11	1,830
17-18	111.32	96.00	20.00	1,690



Average Incarceration Length - Felony Class B - Multiple Offenders

Fiscal Year	Mean	Median	Standard Deviation	N
10-11	172.58	168.00	36.77	223
11-12	184.06	180.00	35.47	409
12-13	184.41	180.00	43.01	238
13-14	183.20	180.00	40.27	197
14-15	178.31	180.00	43.78	227
15-16	173.78	180.00	34.33	220
16-17	179.41	180.00	40.74	306
17-18	174.47	180.00	36.75	254

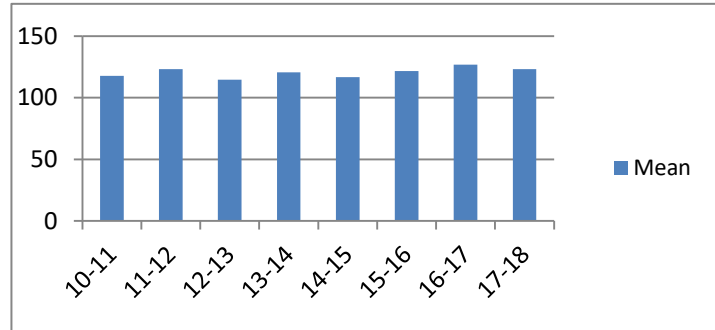


Average Incarceration Lengths in Months by Felony Class and Offense

Note: Column N indicates the number of felony convictions. Individual offenders can have multiple convictions. Incarceration includes life without parole and death sentences. Probation includes sentences to community corrections.

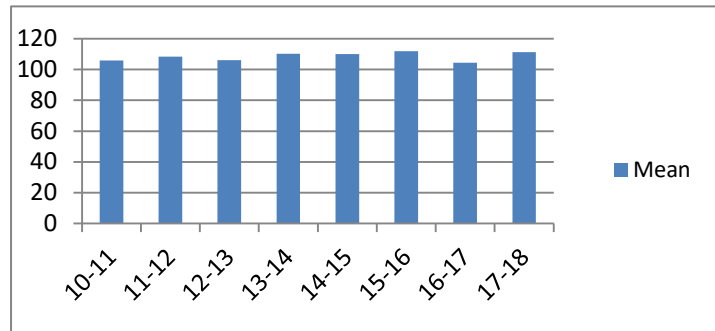
Average Incarceration Length - Schedule II Cocaine - All Offenders

Fiscal Year	Mean	Median	Standard Deviation	N
10-11	117.76	96.00	36.51	551
11-12	123.35	108.00	46.60	543
12-13	114.72	96.00	30.66	456
13-14	120.72	108.00	37.24	366
14-15	116.71	108.00	32.65	300
15-16	121.62	120.00	35.85	196
16-17	126.80	96.00	47.70	161
17-18	123.27	108.00	39.87	172



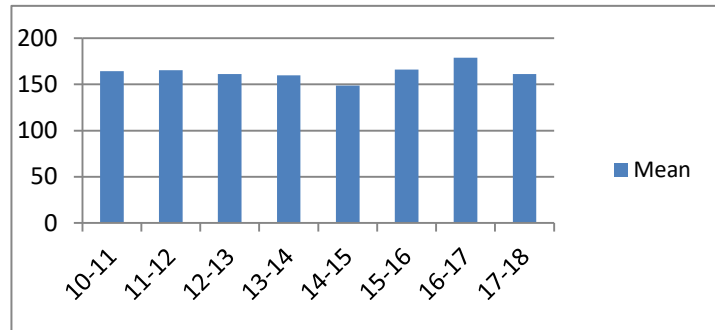
Average Incarceration Length - Schedule II Cocaine - Standard Offenders

Fiscal Year	Mean	Median	Standard Deviation	N
10-11	105.85	96.00	16.37	454
11-12	108.39	96.00	21.36	440
12-13	106.14	96.00	18.05	378
13-14	110.28	96.00	19.72	302
14-15	110.02	96.00	20.44	255
15-16	111.98	108.00	19.37	163
16-17	104.50	96.00	16.72	113
17-18	111.20	96.00	23.34	133



Average Incarceration Length - Schedule II Cocaine - Multiple Offenders

Fiscal Year	Mean	Median	Standard Deviation	N
10-11	164.20	156.00	32.41	79
11-12	165.25	144.00	35.08	83
12-13	161.21	144.00	38.86	68
13-14	160.00	144.00	31.54	51
14-15	148.70	144.00	42.22	37
15-16	166.15	174.00	38.35	26
16-17	178.83	180.00	42.15	41
17-18	161.29	144.00	35.10	34

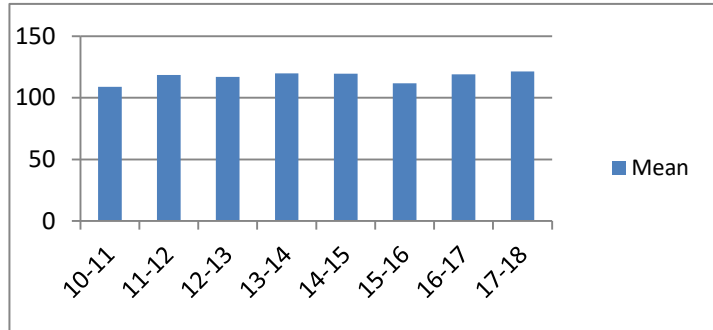


Average Incarceration Lengths in Months by Felony Class and Offense

Note: Column N indicates the number of felony convictions. Individual offenders can have multiple convictions. Incarceration includes life without parole and death sentences. Probation includes sentences to community corrections.

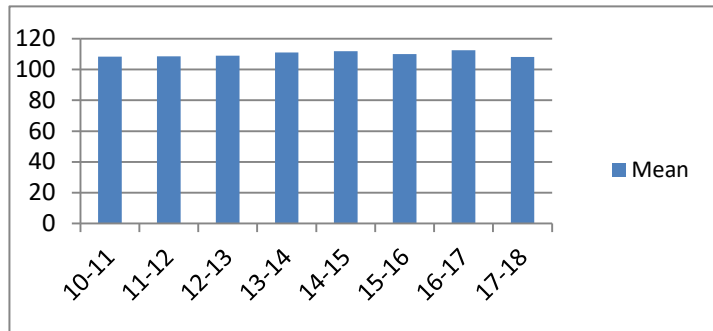
Average Incarceration Length - Aggravated Robbery - All Offenders

Fiscal Year	Mean	Median	Standard Deviation	N
10-11	108.88	96.00	30.01	748
11-12	118.54	96.00	48.22	639
12-13	117.04	96.00	42.07	508
13-14	119.76	96.00	42.62	500
14-15	119.63	108.00	40.30	410
15-16	111.75	96.00	29.70	513
16-17	119.01	108.00	39.53	430
17-18	121.43	96.00	45.17	456



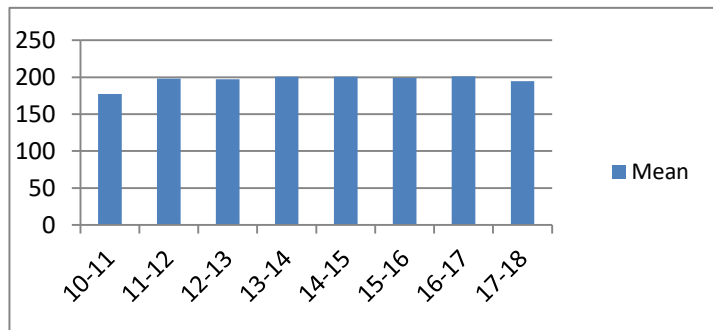
Average Incarceration Length - Aggravated Robbery - Standard Offenders

Fiscal Year	Mean	Median	Standard Deviation	N
10-11	108.31	96.00	16.97	558
11-12	108.64	96.00	18.00	461
12-13	109.08	96.00	17.60	401
13-14	111.16	96.00	18.12	408
14-15	111.98	108.00	19.12	333
15-16	110.05	96.00	19.33	437
16-17	112.62	108.00	19.09	361
17-18	108.20	96.00	17.53	324



Average Incarceration Length - Aggravated Robbery - Multiple Offenders

Fiscal Year	Mean	Median	Standard Deviation	N
10-11	177.25	174.00	36.26	24
11-12	198.11	180.00	34.55	55
12-13	197.37	180.00	35.59	38
13-14	200.59	216.00	36.18	37
14-15	200.73	180.00	29.70	33
15-16	199.00	201.00	22.57	18
16-17	201.11	204.00	34.84	27
17-18	194.56	192.00	23.51	61

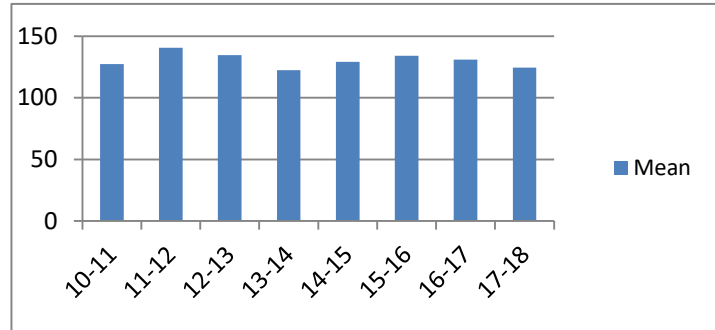


Average Incarceration Lengths in Months by Felony Class and Offense

Note: Column N indicates the number of felony convictions. Individual offenders can have multiple convictions. Incarceration includes life without parole and death sentences. Probation includes sentences to community corrections.

Average Incarceration Length - Aggravated Sexual Battery - All Offenders

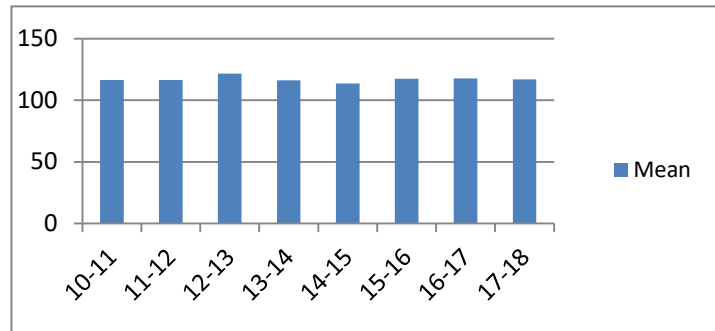
Fiscal Year	Mean	Median	Standard Deviation	N
10-11	127.46	120.00	34.27	201
11-12	140.71	120.00	39.63	383
12-13	134.69	120.00	38.27	217
13-14	122.56	120.00	34.29	184
14-15	129.24	120.00	41.85	168
15-16	134.19	120.00	40.12	139
16-17	131.00	120.00	39.43	247
17-18	124.58	120.00	32.94	212



low occurrence frequencies.

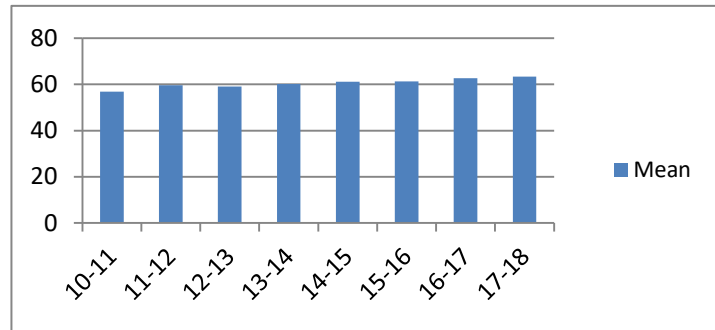
Average Incarceration Length - Aggravated Sexual Battery - Standard Offenders

Fiscal Year	Mean	Median	Standard Deviation	N
10-11	116.60	120.00	18.18	173
11-12	116.56	120.00	15.94	251
12-13	121.62	120.00	19.29	181
13-14	116.20	120.00	18.27	164
14-15	113.61	108.00	16.99	139
15-16	117.60	120.00	18.84	105
16-17	117.88	120.00	19.20	209
17-18	116.92	120.00	18.10	195



Average Incarceration Length - Class C - All Offenders

Fiscal Year	Mean	Median	Standard Deviation	N
10-11	56.89	48.00	25.05	7,863
11-12	59.67	48.00	28.42	7,679
12-13	59.06	48.00	28.03	6,655
13-14	60.19	48.00	27.75	6,168
14-15	61.23	48.00	30.80	5,482
15-16	61.30	48.00	29.08	5,264
16-17	62.62	60.00	29.65	4,855
17-18	63.34	60.00	29.87	4,078

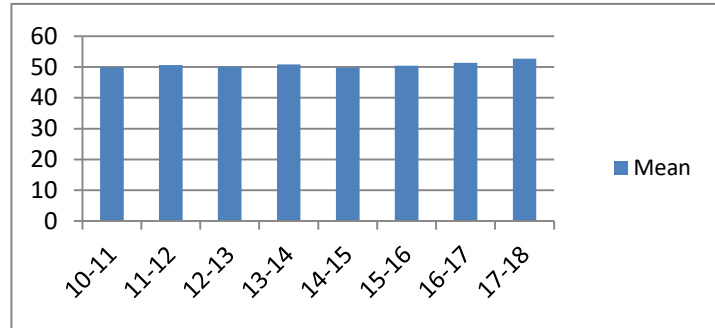


Average Incarceration Lengths in Months by Felony Class and Offense

Note: Column N indicates the number of felony convictions. Individual offenders can have multiple convictions. Incarceration includes life without parole and death sentences. Probation includes sentences to community corrections.

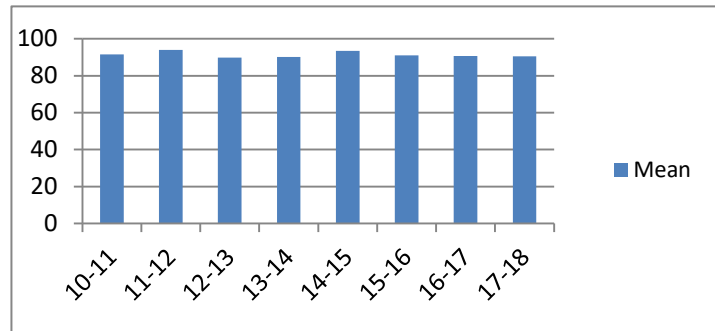
Average Incarceration Length - Class C - Standard Offenders

Fiscal Year	Mean	Median	Standard Deviation	N
10-11	49.90	48.00	15.65	6,668
11-12	50.68	48.00	16.83	6,330
12-13	50.16	48.00	15.63	5,457
13-14	50.86	48.00	15.90	4,978
14-15	49.83	48.00	16.59	4,314
15-16	50.43	48.00	16.89	4,101
16-17	51.33	48.00	16.42	3,761
17-18	52.71	48.00	17.25	3,198



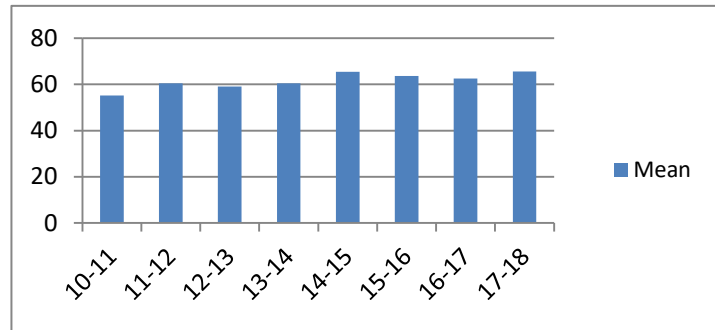
Average Incarceration Length - Class C - Multiple Offenders

Fiscal Year	Mean	Median	Standard Deviation	N
10-11	91.47	96.00	22.12	940
11-12	93.96	96.00	21.83	1,020
12-13	89.73	93.00	21.89	898
13-14	90.12	84.00	19.95	929
14-15	93.48	96.00	22.38	888
15-16	91.02	87.00	20.91	886
16-17	90.74	96.00	20.27	822
17-18	90.55	96.00	20.23	654



Average Incarceration Length - Aggravated Burglary - All Offenders

Fiscal Year	Mean	Median	Standard Deviation	N
10-11	55.24	48.00	24.49	2,263
11-12	60.43	48.00	30.33	2,357
12-13	59.06	48.00	30.25	2,026
13-14	60.43	48.00	29.32	1,734
14-15	65.50	48.00	34.49	1,549
15-16	63.64	54.00	31.73	1,384
16-17	62.57	54.00	31.52	1,047
17-18	65.62	60.00	34.94	705

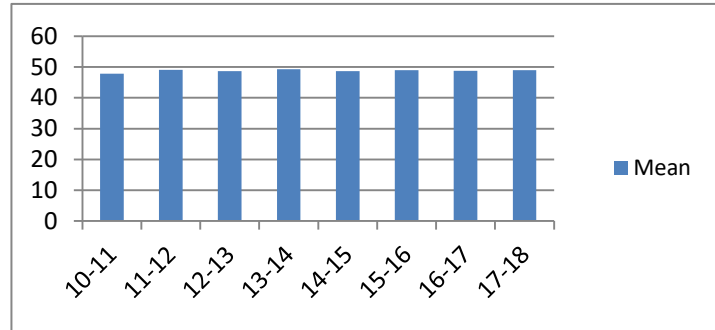


Average Incarceration Lengths in Months by Felony Class and Offense

Note: Column N indicates the number of felony convictions. Individual offenders can have multiple convictions. Incarceration includes life without parole and death sentences. Probation includes sentences to community corrections.

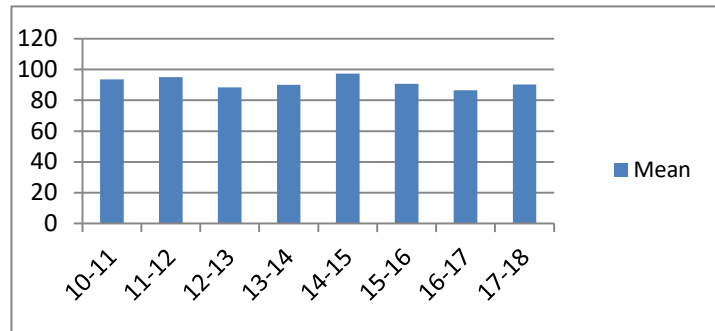
Average Incarceration Length - Aggravated Burglary - Standard Offenders

Fiscal Year	Mean	Median	Standard Deviation	N
10-11	47.85	48.00	13.56	1,931
11-12	49.06	48.00	15.17	1,882
12-13	48.70	48.00	14.29	1,635
13-14	49.30	48.00	14.21	1,360
14-15	48.63	48.00	16.87	1,101
15-16	49.00	48.00	14.19	1,001
16-17	48.78	48.00	14.62	773
17-18	49.01	48.00	14.57	501



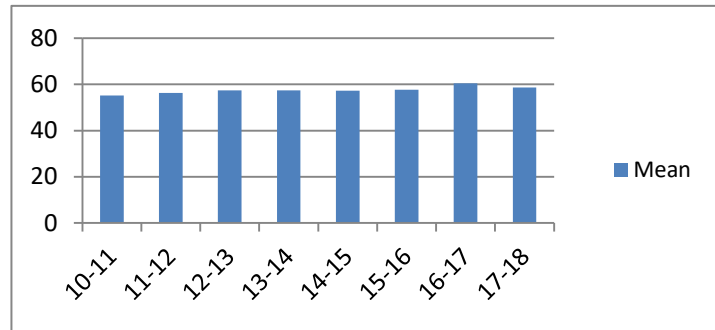
Average Incarceration Length - Aggravated Burglary - Multiple Offenders

Fiscal Year	Mean	Median	Standard Deviation	N
10-11	93.70	96.00	20.20	245
11-12	95.14	96.00	21.56	327
12-13	88.39	84.00	20.95	272
13-14	90.02	84.00	19.74	285
14-15	97.36	96.00	21.91	351
15-16	90.78	84.00	22.99	286
16-17	86.46	75.50	18.68	194
17-18	90.34	96.00	19.85	143



Average Incarceration Length - Aggravated Assault - All Offenders

Fiscal Year	Mean	Median	Standard Deviation	N
10-11	55.25	48.00	25.25	1,058
11-12	56.36	48.00	26.48	1,104
12-13	57.43	48.00	26.81	1,122
13-14	57.43	48.00	26.58	996
14-15	57.22	48.00	27.00	978
15-16	57.70	48.00	28.63	1,058
16-17	60.48	48.00	27.72	936
17-18	58.71	48.00	27.82	830

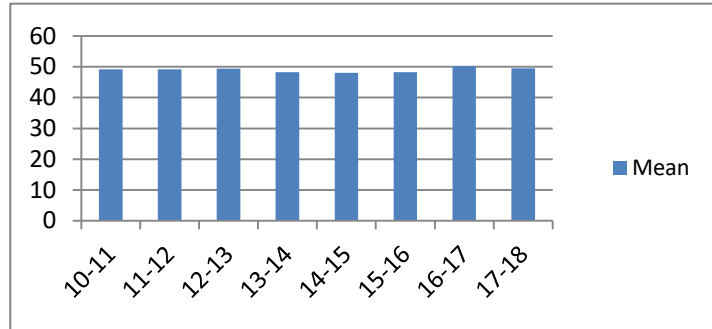


Average Incarceration Lengths in Months by Felony Class and Offense

Note: Column N indicates the number of felony convictions. Individual offenders can have multiple convictions. Incarceration includes life without parole and death sentences. Probation includes sentences to community corrections.

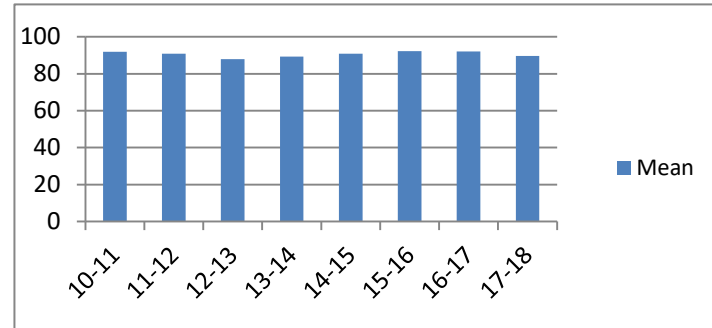
Average Incarceration Length - Aggravated Assault - Standard Offenders

Fiscal Year	Mean	Median	Standard Deviation	N
10-11	49.16	48.00	15.40	925
11-12	49.25	48.00	16.36	944
12-13	49.45	48.00	15.24	939
13-14	48.23	48.00	14.13	805
14-15	48.01	36.00	14.66	801
15-16	48.29	36.00	16.93	863
16-17	50.19	48.00	15.65	743
17-18	49.52	48.00	15.91	676



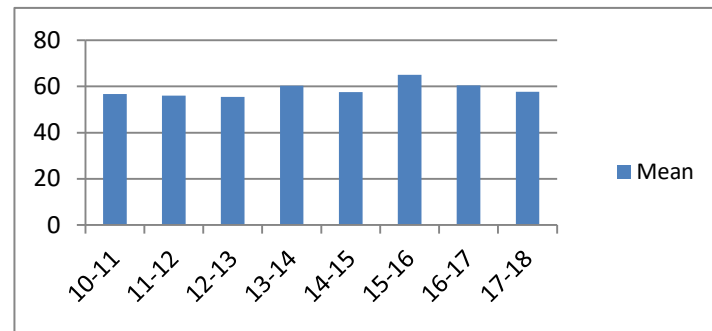
Average Incarceration Length - Aggravated Assault - Multiple Offenders

Fiscal Year	Mean	Median	Standard Deviation	N
10-11	91.83	96.00	20.61	93
11-12	90.89	96.00	21.45	131
12-13	87.93	96.00	21.21	147
13-14	89.27	84.00	20.99	165
14-15	90.88	96.00	20.84	137
15-16	92.17	84.00	22.20	145
16-17	92.01	96.00	19.40	146
17-18	89.66	84.00	19.55	119



Average Incarceration Length - Schedule II Cocaine < 1/2 Gram - All Offenders

Fiscal Year	Mean	Median	Standard Deviation	N
10-11	56.79	48.00	25.42	1,272
11-12	55.97	48.00	24.24	806
12-13	55.53	48.00	20.63	346
13-14	60.31	60.00	22.15	315
14-15	57.55	48.00	24.73	257
15-16	64.99	60.00	32.57	166
16-17	60.46	60.00	25.40	143
17-18	57.67	48.00	25.36	85

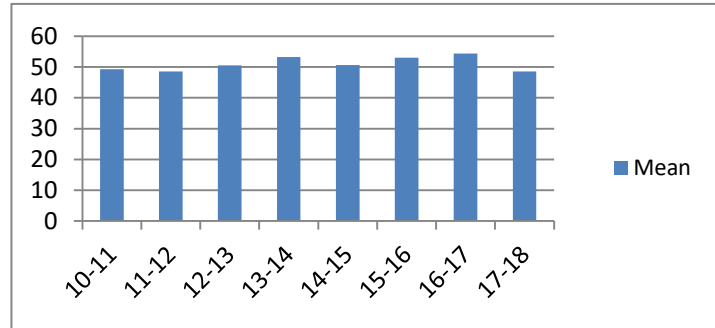


Average Incarceration Lengths in Months by Felony Class and Offense

Note: Column N indicates the number of felony convictions. Individual offenders can have multiple convictions. Incarceration includes life without parole and death sentences. Probation includes sentences to community corrections.

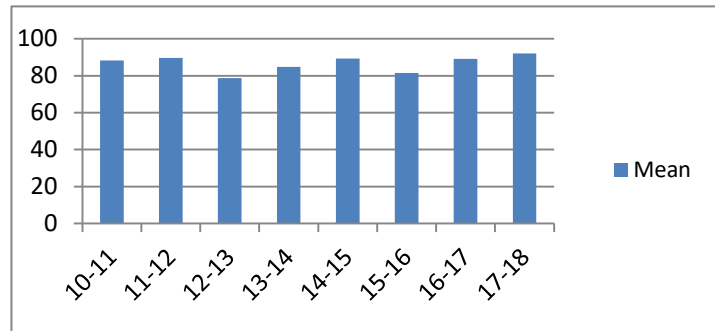
Average Incarceration Length - Schedule II Cocaine < 1/2 Gram - Standard Offenders

Fiscal Year	Mean	Median	Standard Deviation	N
10-11	49.31	48.00	14.86	1,062
11-12	48.55	48.00	14.85	645
12-13	50.51	48.00	14.02	292
13-14	53.29	48.00	17.18	245
14-15	50.65	48.00	14.82	217
15-16	53.06	48.00	17.70	126
16-17	54.34	48.00	18.65	122
17-18	48.61	48.00	14.19	69



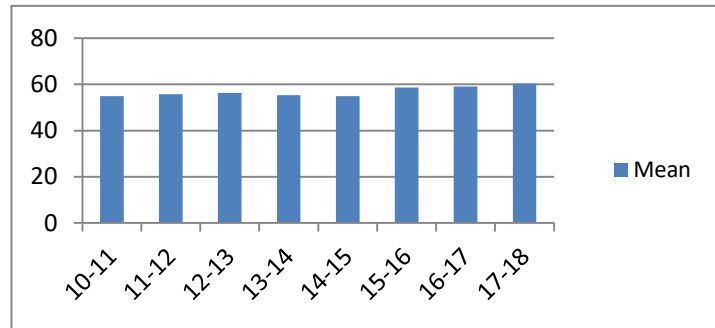
Average Incarceration Length - Schedule II Cocaine < 1/2 Gram - Multiple Offenders

Fiscal Year	Mean	Median	Standard Deviation	N
10-11	88.28	72.03	26.22	173
11-12	89.55	84.00	23.57	130
12-13	78.70	72.00	19.17	47
13-14	84.72	72.00	19.47	67
14-15	89.31	84.00	17.50	26
15-16	81.43	72.00	18.29	28
16-17	89.05	84.00	21.29	19
17-18	92.00	90.00	25.24	12



Average Incarceration Length - Schedule II Drugs: Max \$100,000 Fine - All Offenders

Fiscal Year	Mean	Median	Standard Deviation	N
10-11	54.92	48.00	23.86	798
11-12	55.80	48.00	22.91	957
12-13	56.25	48.00	25.79	826
13-14	55.35	48.00	23.61	840
14-15	54.92	42.00	32.49	556
15-16	58.63	48.00	26.55	473
16-17	59.08	48.00	26.20	432
17-18	60.40	60.00	24.24	273

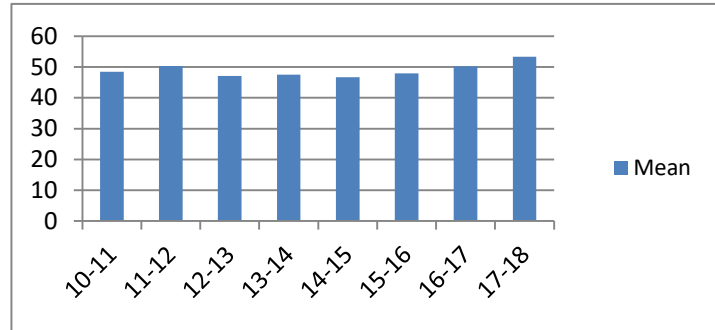


Average Incarceration Lengths in Months by Felony Class and Offense

Note: Column N indicates the number of felony convictions. Individual offenders can have multiple convictions. Incarceration includes life without parole and death sentences. Probation includes sentences to community corrections.

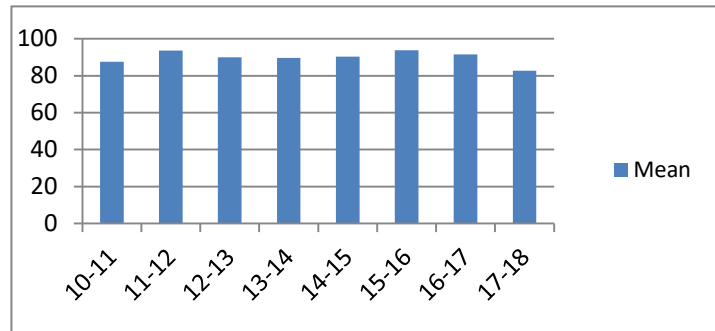
Average Incarceration Length - Schedule II Drugs: Max \$100,000 Fine - Standard Offenders

Fiscal Year	Mean	Median	Standard Deviation	N
10-11	48.45	48.00	14.74	679
11-12	50.29	48.00	16.11	848
12-13	47.10	36.00	14.13	673
13-14	47.57	36.03	14.43	687
14-15	46.72	36.00	15.54	484
15-16	47.90	48.00	13.86	370
16-17	50.21	48.00	15.76	353
17-18	53.38	48.00	16.97	214



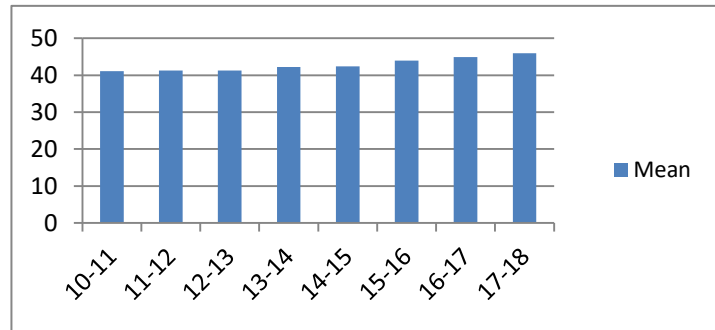
Average Incarceration Length - Schedule II Drugs: Max \$100,000 Fine - Multiple Offenders

Fiscal Year	Mean	Median	Standard Deviation	N
10-11	87.49	72.00	19.67	102
11-12	93.68	96.00	20.79	88
12-13	89.97	96.00	20.40	126
13-14	89.55	84.00	20.36	121
14-15	90.36	96.00	23.16	55
15-16	93.70	96.00	21.38	93
16-17	91.57	96.00	22.10	65
17-18	82.67	72.00	25.92	54



Average Incarceration Length - Class D - All Offenders

Fiscal Year	Mean	Median	Standard Deviation	N
10-11	41.05	36.00	23.15	7,699
11-12	41.22	36.00	23.61	7,978
12-13	41.28	36.00	23.29	6,983
13-14	42.20	36.00	24.10	6,347
14-15	42.34	36.00	24.30	5,582
15-16	43.96	36.00	25.99	5,237
16-17	44.88	36.00	25.98	4,398
17-18	45.91	36.00	28.12	2,813

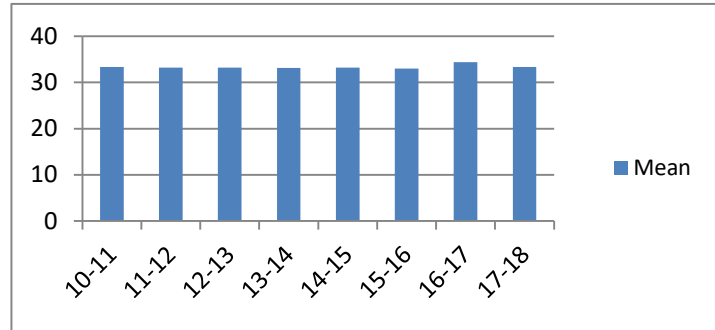


Average Incarceration Lengths in Months by Felony Class and Offense

Note: Column N indicates the number of felony convictions. Individual offenders can have multiple convictions. Incarceration includes life without parole and death sentences. Probation includes sentences to community corrections.

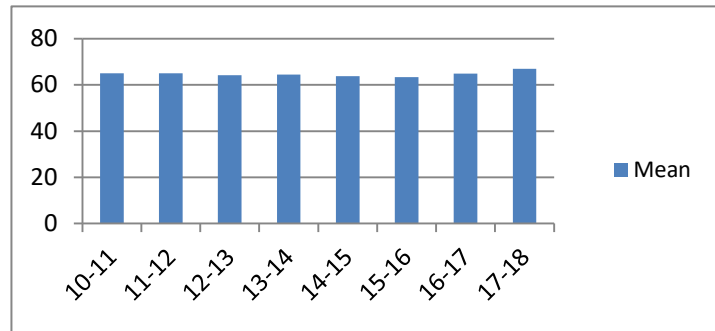
Average Incarceration Length - Class D - Standard Offenders

Fiscal Year	Mean	Median	Standard Deviation	N
10-11	33.38	30.00	11.69	6,290
11-12	33.18	25.00	10.55	6,480
12-13	33.22	30.00	10.27	5,686
13-14	33.15	30.00	10.38	4,985
14-15	33.22	36.00	10.53	4,384
15-16	33.01	36.00	10.14	3,901
16-17	34.38	36.00	11.16	3,336
17-18	33.37	30.00	10.68	2,053



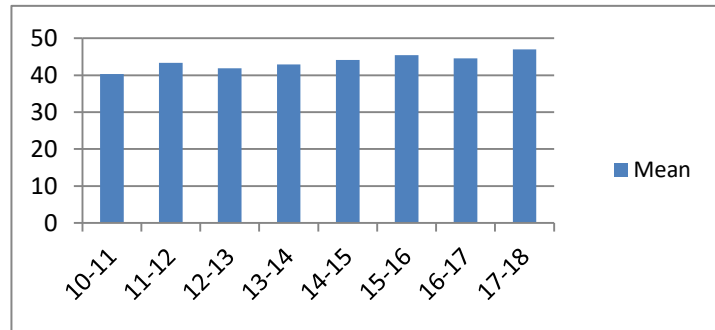
Average Incarceration Length - Class D - Multiple Offenders

Fiscal Year	Mean	Median	Standard Deviation	N
10-11	65.07	60.00	17.51	1,066
11-12	65.08	60.00	18.75	1,133
12-13	64.28	60.00	18.59	934
13-14	64.54	60.00	17.84	1,046
14-15	63.82	60.00	18.64	891
15-16	63.42	60.00	18.58	993
16-17	64.95	60.00	19.07	790
17-18	67.04	72.00	19.53	540



Average Incarceration Length - Theft: \$1,000 to \$10,000 - All Offenders

Fiscal Year	Mean	Median	Standard Deviation	N
10-11	40.29	36.00	21.74	2,326
11-12	43.29	36.00	24.85	2,648
12-13	41.89	36.00	23.64	2,435
13-14	42.94	36.00	25.21	2,120
14-15	44.15	36.00	25.81	1,919
15-16	45.39	36.00	27.33	1,832
16-17	44.54	36.00	26.64	1,263
17-18	46.94	36.00	29.05	444

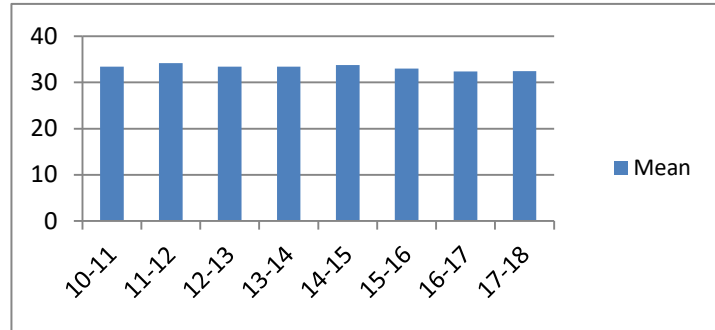


Average Incarceration Lengths in Months by Felony Class and Offense

Note: Column N indicates the number of felony convictions. Individual offenders can have multiple convictions. Incarceration includes life without parole and death sentences. Probation includes sentences to community corrections.

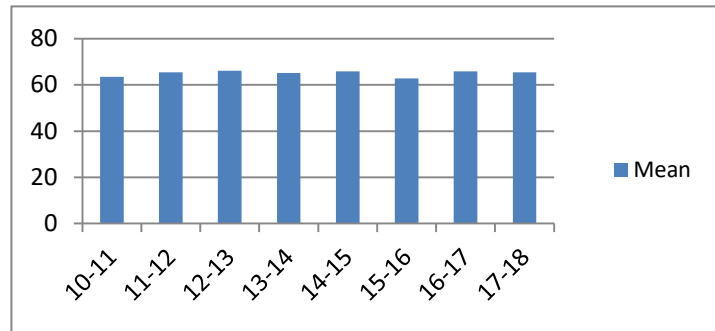
Average Incarceration Length - Theft: \$1,000 to \$10,000 - Standard Offenders

Fiscal Year	Mean	Median	Standard Deviation	N
10-11	33.43	30.00	11.40	1,922
11-12	34.18	36.00	10.70	2,095
12-13	33.40	36.00	10.30	1,951
13-14	33.43	36.00	10.20	1,663
14-15	33.76	36.00	10.91	1,465
15-16	33.03	36.00	10.10	1,292
16-17	32.41	24.03	10.43	919
17-18	32.46	24.00	11.70	301



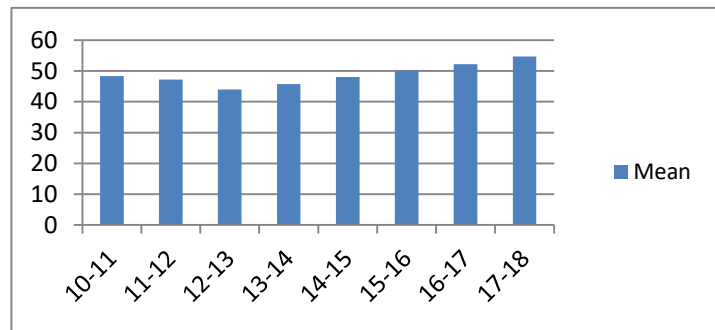
Average Incarceration Length - Theft: \$1,000 to \$10,000 - Multiple Offenders

Fiscal Year	Mean	Median	Standard Deviation	N
10-11	63.50	60.00	16.85	313
11-12	65.46	60.00	19.27	415
12-13	66.13	60.00	20.14	361
13-14	65.21	60.00	19.30	349
14-15	65.85	60.00	19.66	337
15-16	62.80	60.00	19.49	419
16-17	65.91	60.00	19.63	264
17-18	65.47	60.00	21.83	101



Average Incarceration Length - Burglary Other Than Habitation - All Offenders

Fiscal Year	Mean	Median	Standard Deviation	N
10-11	48.31	36.00	28.59	1,270
11-12	47.20	36.00	28.66	1,135
12-13	43.96	36.00	23.59	960
13-14	45.75	36.00	25.68	884
14-15	48.03	42.00	29.50	722
15-16	50.14	48.00	29.93	679
16-17	52.25	42.00	33.31	611
17-18	54.73	48.00	34.04	498

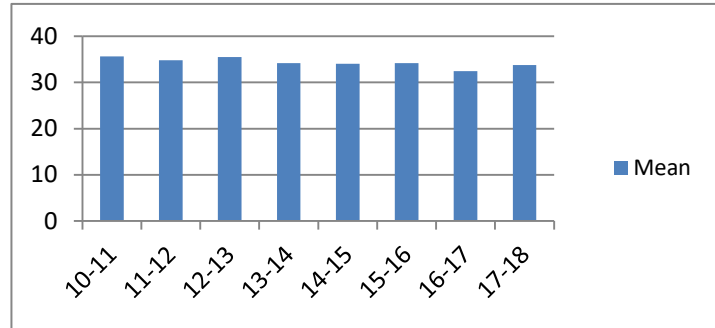


Average Incarceration Lengths in Months by Felony Class and Offense

Note: Column N indicates the number of felony convictions. Individual offenders can have multiple convictions. Incarceration includes life without parole and death sentences. Probation includes sentences to community corrections.

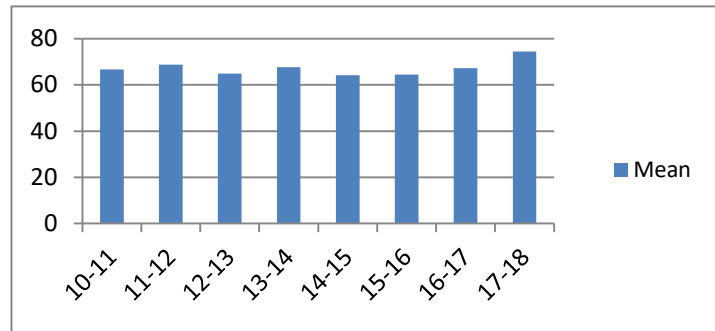
Average Incarceration Length - Burglary Other Than Habitation - Standard Offenders

Fiscal Year	Mean	Median	Standard Deviation	N
10-11	35.62	36.00	15.26	905
11-12	34.81	36.00	10.75	856
12-13	35.48	36.00	10.66	765
13-14	34.20	36.00	10.66	654
14-15	34.03	36.00	11.02	510
15-16	34.19	36.00	10.84	440
16-17	32.45	24.03	10.58	377
17-18	33.79	36.00	10.94	305



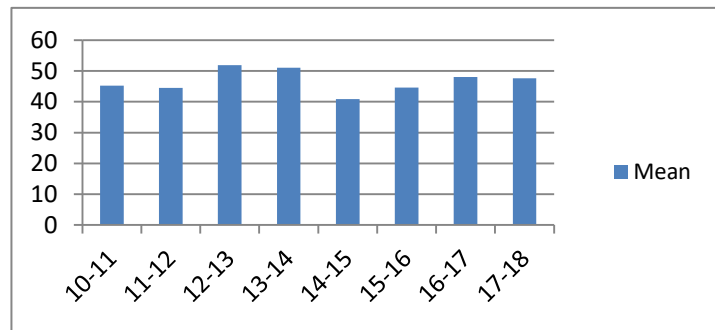
Average Incarceration Length - Burglary Other Than Habitation - Multiple Offenders

Fiscal Year	Mean	Median	Standard Deviation	N
10-11	66.70	72.00	15.22	270
11-12	68.77	72.00	20.21	186
12-13	64.84	60.00	17.29	140
13-14	67.63	72.00	17.12	177
14-15	64.24	60.00	17.25	135
15-16	64.49	60.00	17.50	175
16-17	67.20	60.00	19.23	160
17-18	74.40	72.00	19.81	125



Average Incarceration Length - Identity Theft - All Offenders

Fiscal Year	Mean	Median	Standard Deviation	N
10-11	45.30	36.00	29.17	503
11-12	44.54	36.00	25.55	527
12-13	51.92	48.00	30.35	442
13-14	51.06	48.00	29.66	352
14-15	40.83	36.00	19.94	385
15-16	44.64	36.00	24.93	365
16-17	48.01	48.00	19.86	597
17-18	47.68	48.00	29.15	213

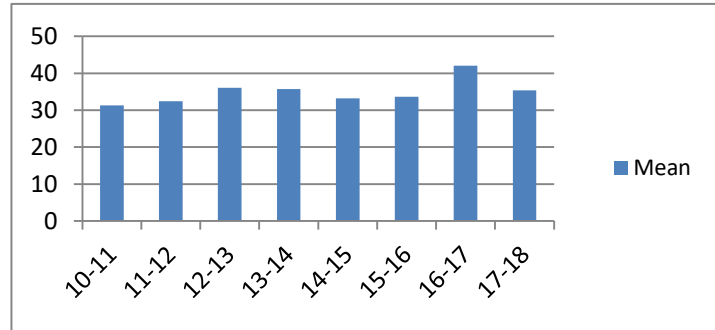


Average Incarceration Lengths in Months by Felony Class and Offense

Note: Column N indicates the number of felony convictions. Individual offenders can have multiple convictions. Incarceration includes life without parole and death sentences. Probation includes sentences to community corrections.

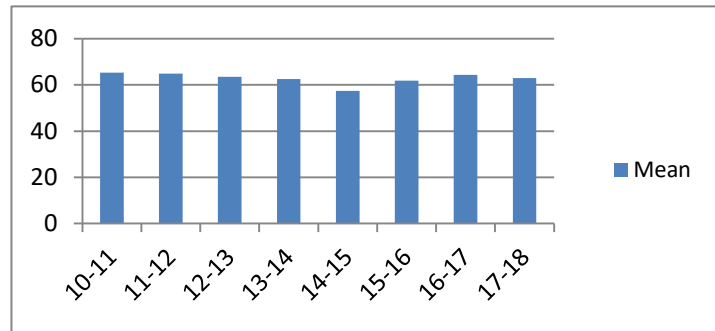
Average Incarceration Length - Identity Theft - Standard Offenders

Fiscal Year	Mean	Median	Standard Deviation	N
10-11	31.32	24.00	10.23	360
11-12	32.44	24.03	9.70	374
12-13	36.02	36.00	10.45	297
13-14	35.73	36.00	10.48	227
14-15	33.23	36.00	9.13	294
15-16	33.59	36.00	9.72	269
16-17	42.06	48.00	9.49	490
17-18	35.34	36.00	10.67	155



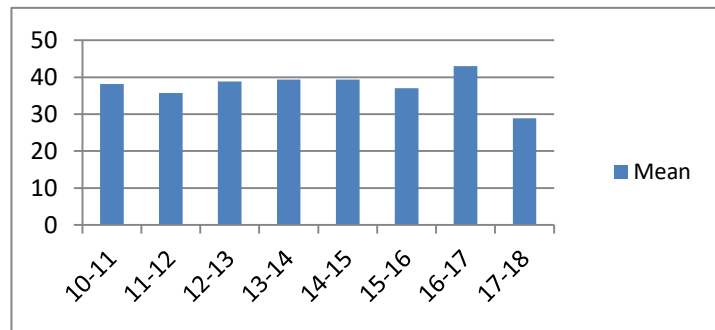
Average Incarceration Length - Identity Theft - Multiple Offenders

Fiscal Year	Mean	Median	Standard Deviation	N
10-11	65.37	60.00	18.92	103
11-12	64.91	66.00	15.79	127
12-13	63.56	60.00	16.66	91
13-14	62.48	48.00	16.62	92
14-15	57.44	48.00	17.68	75
15-16	61.90	60.00	15.42	63
16-17	64.33	60.00	18.21	86
17-18	62.92	72.00	13.76	39



Average Incarceration Length - Obtain Drugs by Fraud - All Offenders

Fiscal Year	Mean	Median	Standard Deviation	N
10-11	38.10	36.00	14.36	222
11-12	35.73	36.00	16.10	287
12-13	38.83	25.00	25.18	176
13-14	39.32	36.00	18.35	139
14-15	39.35	36.00	21.54	140
15-16	37.05	36.00	18.36	184
16-17	42.97	36.00	25.69	31
17-18	28.91	24.00	9.56	22

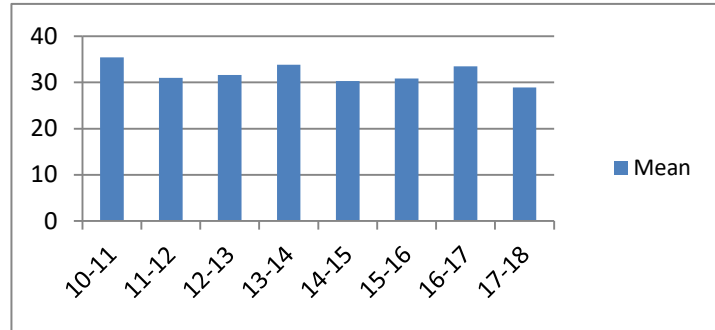


Average Incarceration Lengths in Months by Felony Class and Offense

Note: Column N indicates the number of felony convictions. Individual offenders can have multiple convictions. Incarceration includes life without parole and death sentences. Probation includes sentences to community corrections.

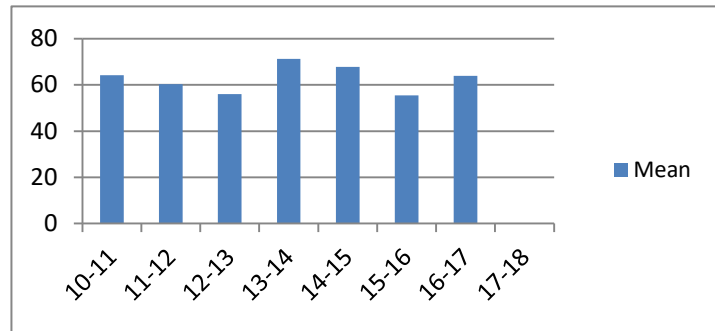
Average Incarceration Length - Obtain Drugs by Fraud - Standard Offenders

Fiscal Year	Mean	Median	Standard Deviation	N
10-11	35.40	36.00	10.84	202
11-12	30.99	24.00	8.84	243
12-13	31.60	24.00	9.89	154
13-14	33.87	36.00	10.01	121
14-15	30.32	24.00	8.67	112
15-16	30.82	24.03	7.61	155
16-17	33.50	36.00	8.65	24
17-18	28.91	24.00	9.56	22



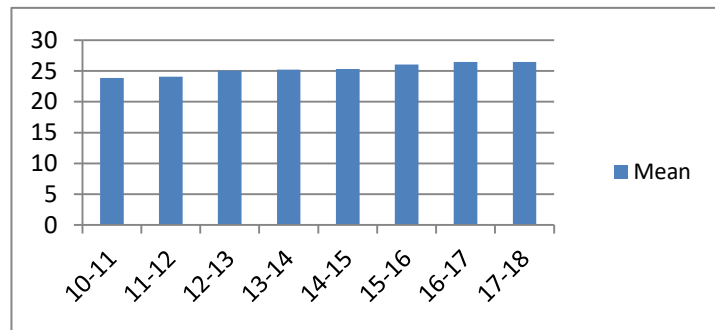
Average Incarceration Length - Obtain Drugs by Fraud - Multiple Offenders

Fiscal Year	Mean	Median	Standard Deviation	N
10-11	64.24	72.00	11.18	17
11-12	60.29	48.00	17.48	42
12-13	56.00	48.00	11.82	12
13-14	71.25	72.00	13.48	16
14-15	67.83	72.00	10.62	23
15-16	55.50	48.00	13.77	16
16-17	64.00	48.00	24.79	6
17-18	.	.	.	0



Average Incarceration Length - Class E - All Offenders

Fiscal Year	Mean	Median	Standard Deviation	N
10-11	23.86	24.00	13.24	9,149
11-12	24.06	24.00	13.18	8,478
12-13	25.07	24.00	14.37	7,914
13-14	25.21	24.00	15.08	7,220
14-15	25.33	24.00	13.87	6,065
15-16	26.07	24.00	14.10	5,949
16-17	26.45	24.00	15.03	5,124
17-18	26.49	24.00	15.27	4,221

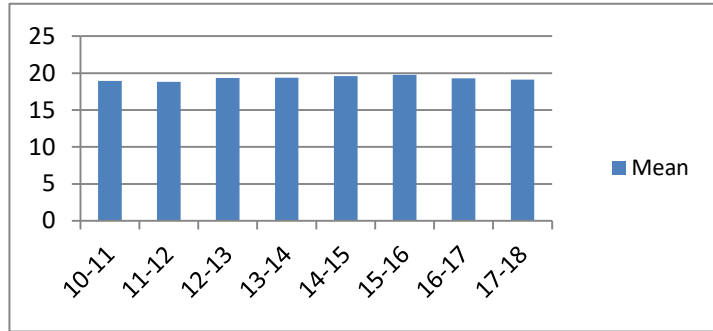


Average Incarceration Lengths in Months by Felony Class and Offense

Note: Column N indicates the number of felony convictions. Individual offenders can have multiple convictions. Incarceration includes life without parole and death sentences. Probation includes sentences to community corrections.

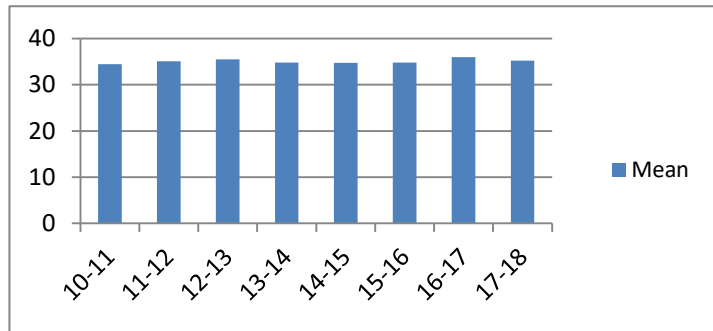
Average Incarceration Length - Class E - Standard Offenders

Fiscal Year	Mean	Median	Standard Deviation	N
10-11	18.92	24.00	6.55	7,037
11-12	18.82	24.00	6.29	6,425
12-13	19.33	24.00	6.62	5,979
13-14	19.36	24.00	6.90	5,388
14-15	19.58	24.00	6.82	4,436
15-16	19.75	24.00	6.37	4,140
16-17	19.27	24.00	6.32	3,565
17-18	19.12	24.00	6.35	2,920



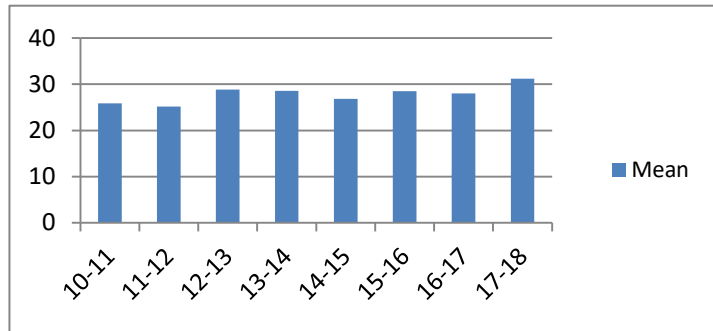
Average Incarceration Length - Class E - Multiple Offenders

Fiscal Year	Mean	Median	Standard Deviation	N
10-11	34.45	36.00	10.56	1,596
11-12	35.09	36.00	10.51	1,567
12-13	35.47	36.00	10.72	1,341
13-14	34.78	36.00	10.62	1,348
14-15	34.76	36.00	10.48	1,224
15-16	34.84	36.00	11.20	1,389
16-17	35.98	36.00	11.15	1,111
17-18	35.20	36.00	10.20	919



Average Incarceration Length - Forgery: Up to \$1,000 - All Offenders

Fiscal Year	Mean	Median	Standard Deviation	N
10-11	25.88	24.00	14.75	1,590
11-12	25.20	24.00	14.42	1,289
12-13	28.86	24.00	17.67	1,373
13-14	28.55	24.00	22.30	903
14-15	26.82	24.00	13.27	618
15-16	28.51	24.00	14.93	579
16-17	28.05	24.00	15.89	517
17-18	31.18	24.00	18.53	235

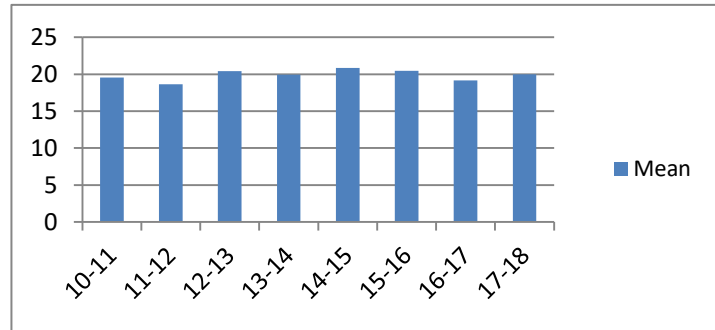


Average Incarceration Lengths in Months by Felony Class and Offense

Note: Column N indicates the number of felony convictions. Individual offenders can have multiple convictions. Incarceration includes life without parole and death sentences. Probation includes sentences to community corrections.

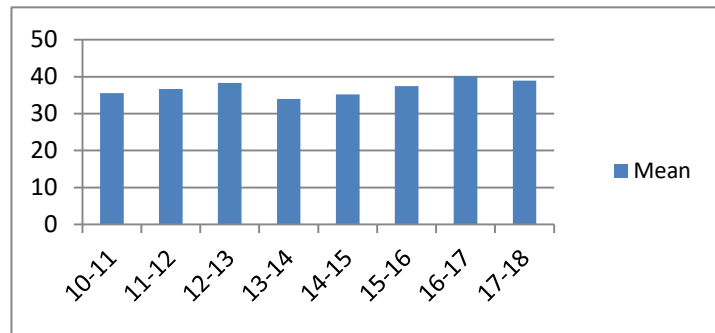
Average Incarceration Length - Forgery: Up to \$1,000 - Standard Offenders

Fiscal Year	Mean	Median	Standard Deviation	N
10-11	19.55	24.00	6.51	1,178
11-12	18.66	24.00	6.22	951
12-13	20.39	24.00	6.51	1,007
13-14	19.93	24.00	7.40	667
14-15	20.86	24.00	5.46	440
15-16	20.48	24.00	5.87	389
16-17	19.17	24.00	6.27	341
17-18	19.97	24.00	6.97	147



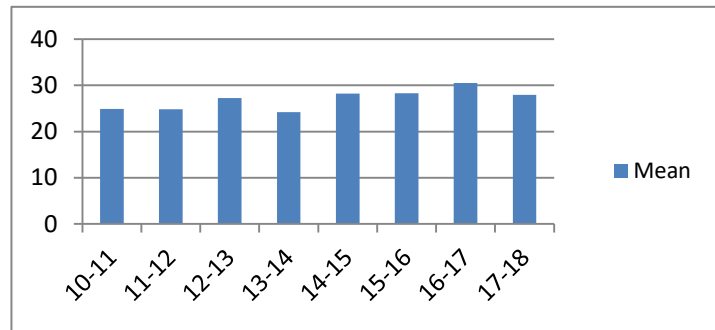
Average Incarceration Length - Forgery: Up to \$1,000 - Multiple Offenders

Fiscal Year	Mean	Median	Standard Deviation	N
10-11	35.51	36.00	11.14	278
11-12	36.69	36.00	10.19	235
12-13	38.34	36.00	9.73	167
13-14	33.98	36.00	9.92	134
14-15	35.20	36.00	10.63	130
15-16	37.45	36.00	9.12	128
16-17	40.12	36.00	11.88	124
17-18	38.95	36.00	8.26	57



Average Incarceration Length - Burglary: Auto - All Offenders

Fiscal Year	Mean	Median	Standard Deviation	N
10-11	24.88	24.00	13.76	1,651
11-12	24.83	24.00	12.18	1,411
12-13	27.26	24.00	14.66	960
13-14	24.22	24.00	13.19	1,063
14-15	28.24	24.00	15.94	909
15-16	28.28	24.00	14.22	895
16-17	30.54	24.00	18.03	641
17-18	27.94	24.00	17.43	656

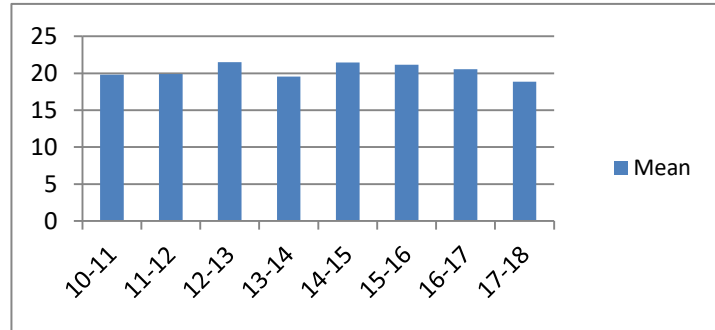


Average Incarceration Lengths in Months by Felony Class and Offense

Note: Column N indicates the number of felony convictions. Individual offenders can have multiple convictions. Incarceration includes life without parole and death sentences. Probation includes sentences to community corrections.

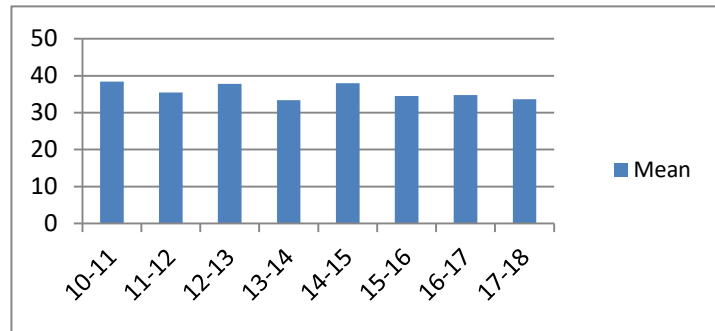
Average Incarceration Length - Burglary: Auto - Standard Offenders

Fiscal Year	Mean	Median	Standard Deviation	N
10-11	19.79	24.00	7.10	1,313
11-12	19.87	24.00	5.74	1,064
12-13	21.47	24.00	7.28	727
13-14	19.56	24.00	6.17	839
14-15	21.46	24.00	8.81	663
15-16	21.16	24.00	5.57	549
16-17	20.55	24.00	5.93	406
17-18	18.86	24.00	6.02	435



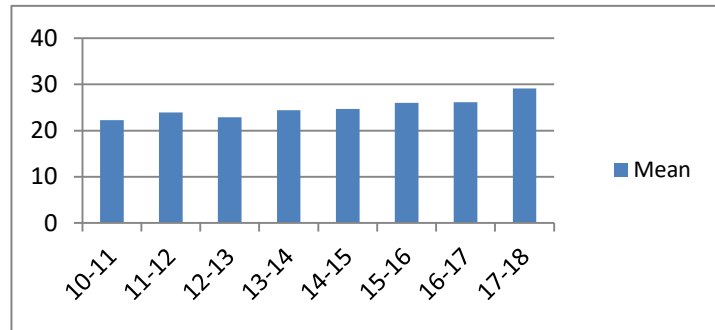
Average Incarceration Length - Burglary: Auto - Multiple Offenders

Fiscal Year	Mean	Median	Standard Deviation	N
10-11	38.39	36.00	10.49	247
11-12	35.48	36.00	10.71	274
12-13	37.76	39.00	11.87	170
13-14	33.34	36.00	9.72	161
14-15	37.98	36.00	10.24	160
15-16	34.52	36.00	12.62	283
16-17	34.80	36.00	10.65	134
17-18	33.62	36.00	10.18	126



Average Incarceration Length - Theft: \$500 - \$1,000 - All Offenders

Fiscal Year	Mean	Median	Standard Deviation	N
10-11	22.27	24.00	12.39	1,111
11-12	23.94	24.00	13.90	1,157
12-13	22.85	24.00	13.54	1,070
13-14	24.38	24.00	13.63	1,017
14-15	24.72	24.00	14.36	880
15-16	25.99	24.00	14.52	839
16-17	26.14	24.00	14.89	698
17-18	29.14	24.00	16.17	270

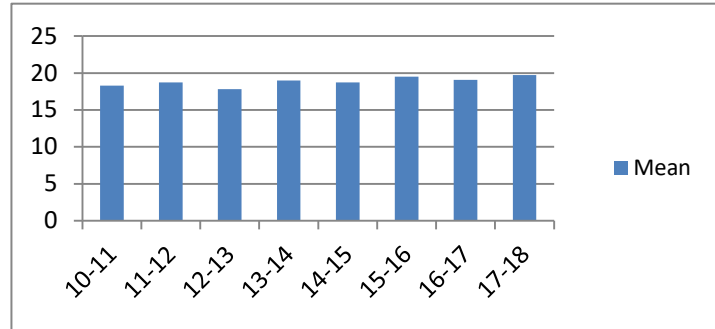


Average Incarceration Lengths in Months by Felony Class and Offense

Note: Column N indicates the number of felony convictions. Individual offenders can have multiple convictions. Incarceration includes life without parole and death sentences. Probation includes sentences to community corrections.

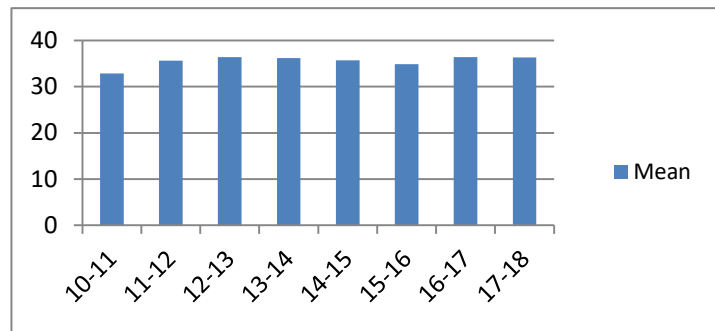
Average Incarceration Length - Theft: \$500 - \$1,000 - Standard Offenders

Fiscal Year	Mean	Median	Standard Deviation	N
10-11	18.27	18.00	6.17	899
11-12	18.74	24.00	6.26	914
12-13	17.80	12.00	6.38	855
13-14	19.00	24.00	6.16	788
14-15	18.72	24.00	6.10	661
15-16	19.49	24.00	6.15	590
16-17	19.05	24.00	6.07	498
17-18	19.74	24.00	7.46	160



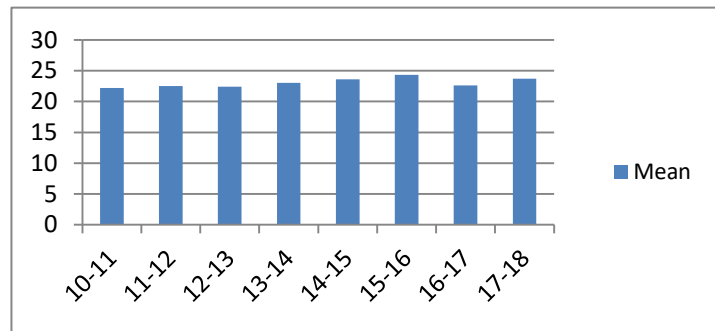
Average Incarceration Length - Theft: \$500 - \$1,000 - Multiple Offenders

Fiscal Year	Mean	Median	Standard Deviation	N
10-11	32.89	24.03	10.18	166
11-12	35.66	36.00	10.76	169
12-13	36.41	36.00	11.57	153
13-14	36.21	36.00	10.17	170
14-15	35.74	36.00	10.61	157
15-16	34.87	30.00	12.29	187
16-17	36.43	36.00	10.55	141
17-18	36.36	36.00	11.02	83



Average Incarceration Length - Schedule VI Drugs: Not < 1/2 Ounce - All Offenders

Fiscal Year	Mean	Median	Standard Deviation	N
10-11	22.19	24.00	11.13	714
11-12	22.52	24.00	11.47	711
12-13	22.43	24.00	10.76	681
13-14	23.05	24.00	11.52	649
14-15	23.60	24.00	11.00	517
15-16	24.35	24.00	12.14	398
16-17	22.61	24.00	10.87	302
17-18	23.71	24.00	12.29	244

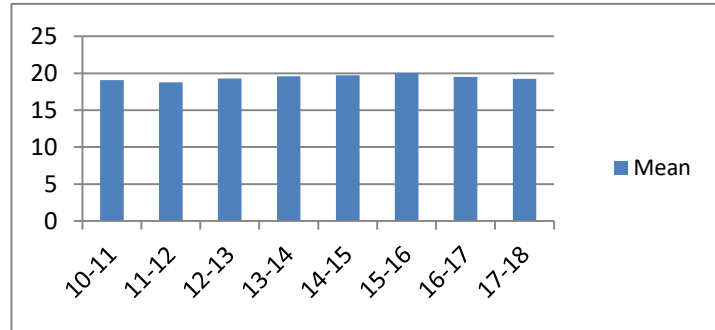


Average Incarceration Lengths in Months by Felony Class and Offense

Note: Column N indicates the number of felony convictions. Individual offenders can have multiple convictions. Incarceration includes life without parole and death sentences. Probation includes sentences to community corrections.

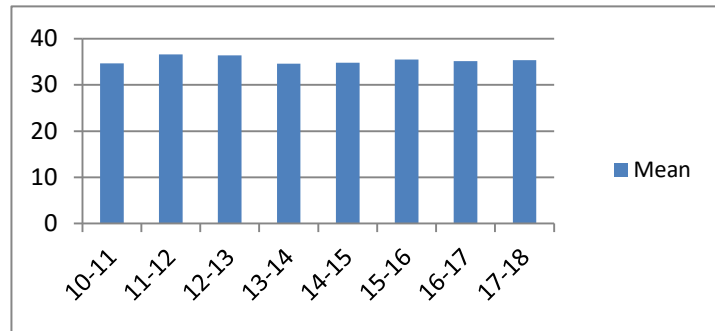
Average Incarceration Length - Schedule VI Drugs: Not < 1/2 Ounce - Standard Offenders

Fiscal Year	Mean	Median	Standard Deviation	N
10-11	19.06	24.00	6.23	601
11-12	18.78	24.00	6.19	583
12-13	19.28	24.00	5.97	570
13-14	19.58	24.00	6.71	532
14-15	19.74	24.00	6.20	404
15-16	20.02	24.00	6.18	302
16-17	19.51	24.00	6.08	251
17-18	19.22	24.00	6.15	193



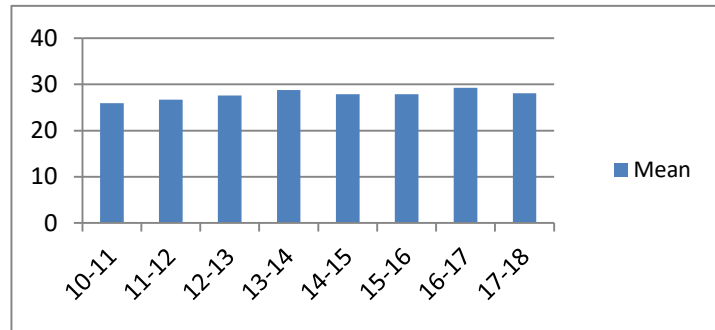
Average Incarceration Length - Schedule VI Drugs: Not < 1/2 Ounce - Multiple Offenders

Fiscal Year	Mean	Median	Standard Deviation	N
10-11	34.66	36.00	10.04	94
11-12	36.58	36.00	10.50	108
12-13	36.42	36.00	9.82	88
13-14	34.61	36.00	10.49	99
14-15	34.80	36.00	9.98	100
15-16	35.53	36.00	10.52	77
16-17	35.12	36.00	11.11	41
17-18	35.37	36.00	9.84	38



Average Incarceration Length - Habitual Traffic Offender - All Offenders

Fiscal Year	Mean	Median	Standard Deviation	N
10-11	25.94	24.00	13.84	488
11-12	26.71	24.00	15.06	426
12-13	27.63	24.00	15.24	425
13-14	28.77	24.00	16.13	394
14-15	27.88	24.00	14.27	316
15-16	27.89	24.00	14.51	300
16-17	29.26	24.00	15.94	260
17-18	28.09	24.00	14.44	223

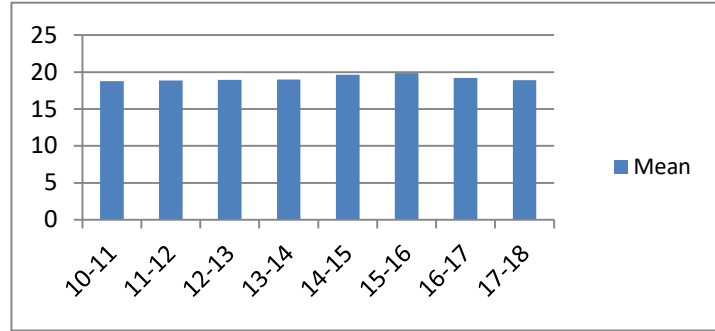


Average Incarceration Lengths in Months by Felony Class and Offense

Note: Column N indicates the number of felony convictions. Individual offenders can have multiple convictions. Incarceration includes life without parole and death sentences. Probation includes sentences to community corrections.

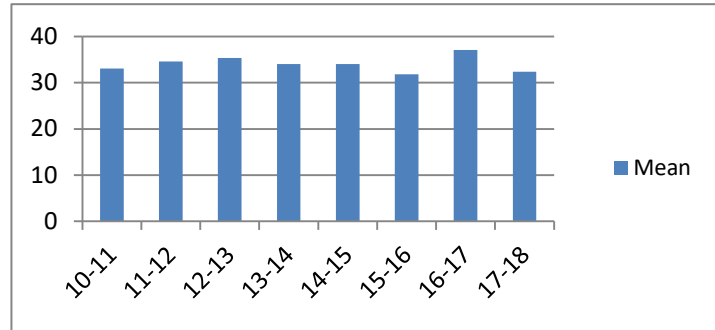
Average Incarceration Length - Habitual Traffic Offender - Standard Offenders

Fiscal Year	Mean	Median	Standard Deviation	N
10-11	18.78	18.00	5.98	307
11-12	18.84	24.00	5.75	273
12-13	18.93	24.00	5.98	265
13-14	18.99	18.00	6.28	225
14-15	19.62	24.00	6.32	183
15-16	19.85	24.00	5.48	171
16-17	19.18	24.00	5.68	153
17-18	18.90	18.00	5.38	117



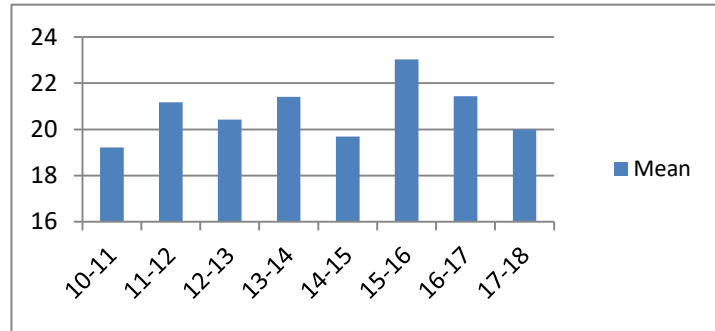
Average Incarceration Length - Habitual Traffic Offender - Multiple Offenders

Fiscal Year	Mean	Median	Standard Deviation	N
10-11	33.06	36.00	9.19	147
11-12	34.63	36.00	9.83	117
12-13	35.35	36.00	9.90	118
13-14	34.02	36.00	9.83	115
14-15	34.03	36.00	10.20	102
15-16	31.84	30.00	8.63	100
16-17	37.07	36.00	11.30	71
17-18	32.41	33.00	8.57	81



Average Incarceration Length - Failure to Appear (Felony) - All Offenders

Fiscal Year	Mean	Median	Standard Deviation	N
10-11	19.22	12.00	10.45	385
11-12	21.18	18.00	12.50	369
12-13	20.42	18.00	11.76	426
13-14	21.41	18.00	13.02	389
14-15	19.69	18.00	10.24	351
15-16	23.03	24.00	15.04	312
16-17	21.43	18.00	13.01	341
17-18	20.00	12.00	12.01	302

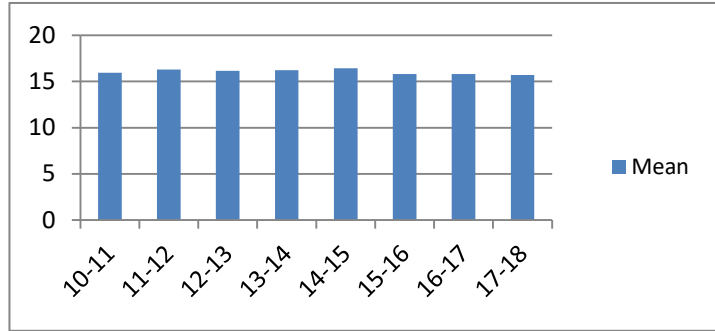


Average Incarceration Lengths in Months by Felony Class and Offense

Note: Column N indicates the number of felony convictions. Individual offenders can have multiple convictions. Incarceration includes life without parole and death sentences. Probation includes sentences to community corrections.

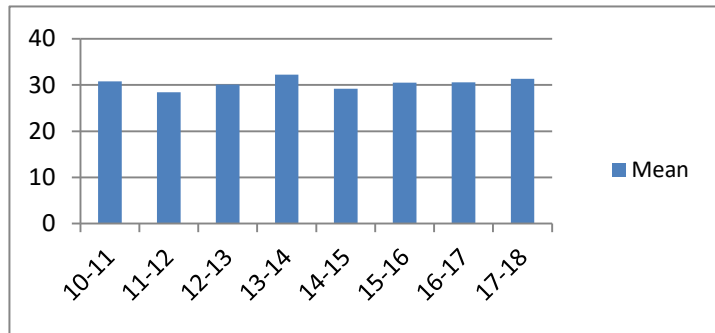
**Average Incarceration Length - Failure to Appear
(Felony) - Standard Offenders**

Fiscal Year	Mean	Median	Standard Deviation	N
10-11	15.93	12.00	5.51	316
11-12	16.28	12.00	5.54	276
12-13	16.16	12.00	5.49	331
13-14	16.23	12.00	5.61	298
14-15	16.43	12.00	5.54	282
15-16	15.79	12.00	5.47	208
16-17	15.80	12.00	5.63	250
17-18	15.70	12.00	5.31	241



**Average Incarceration Length - Failure to Appear
(Felony) - Multiple Offenders**

Fiscal Year	Mean	Median	Standard Deviation	N
10-11	30.80	24.00	9.97	60
11-12	28.41	24.00	7.45	69
12-13	30.07	24.00	9.20	72
13-14	32.21	24.00	10.31	70
14-15	29.18	24.00	8.52	61
15-16	30.54	24.00	9.58	78
16-17	30.59	24.00	9.33	69
17-18	31.35	24.00	10.41	49



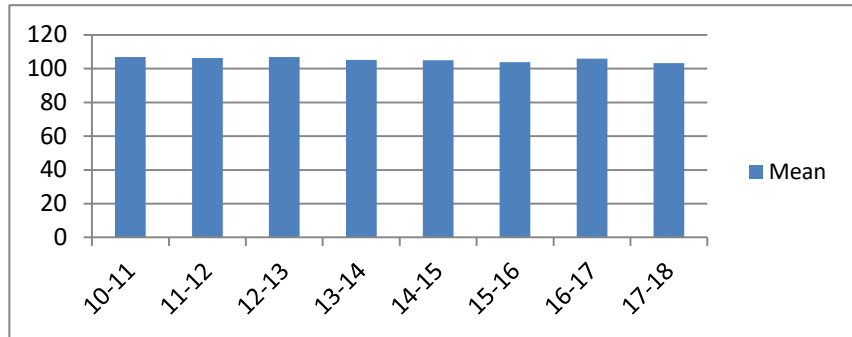
Average Probation Lengths in Months by Felony Class

Note: Column N indicates the number of felony convictions. Individual offenders can have multiple convictions. Incarceration includes lifewithout parole and death sentences. Probation includes sentences to community corrections.

Average Probation Length - Felony Class B - All Offenders

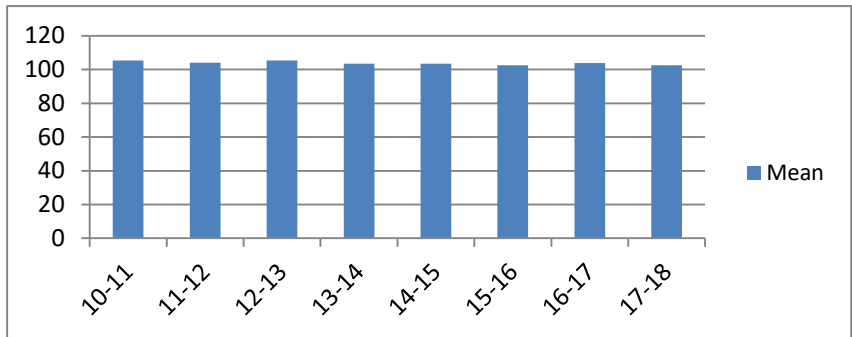
Fiscal Year	Mean	Median	Standard Deviation	N
10-11	106.76	96.00	20.25	616
11-12	106.26	96.00	22.90	566
12-13	106.91	96.00	25.24	628
13-14	105.05	96.00	19.37	492
14-15	104.98	96.00	17.24	583
15-16	103.73	96.00	15.32	547
16-17	105.84	96.00	21.91	568
17-18	103.22	96.00	16.73	755

included due to low occurrence frequencies.



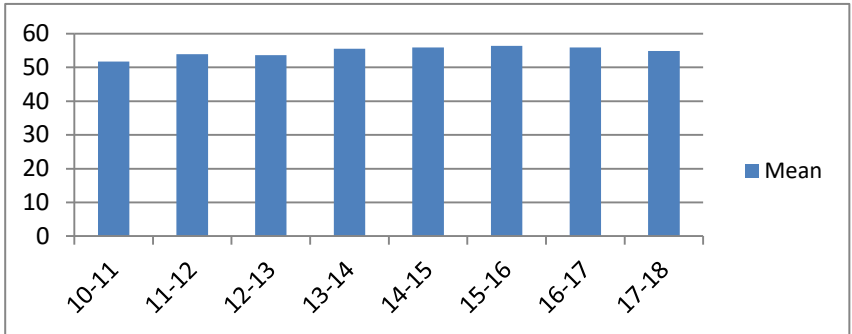
Average Probation Length - Felony Class B - Standard Offenders

Fiscal Year	Mean	Median	Standard Deviation	N
10-11	105.32	96.00	18.20	584
11-12	104.00	96.00	18.84	524
12-13	105.25	96.00	23.40	591
13-14	103.41	96.00	15.91	471
14-15	103.40	96.00	15.16	550
15-16	102.53	96.00	12.57	526
16-17	103.88	96.00	17.39	549
17-18	102.38	96.00	14.49	730



Average Probation Length - Class C - All Offenders

Fiscal Year	Mean	Median	Standard Deviation	N
10-11	51.73	48.00	21.05	2,342
11-12	53.92	48.00	20.93	2,459
12-13	53.57	48.00	22.14	2,479
13-14	55.46	48.00	24.01	2,487
14-15	55.89	48.00	22.79	2,306
15-16	56.38	48.00	23.56	2,705
16-17	55.84	48.00	21.59	3,087
17-18	54.83	48.00	21.36	3,408

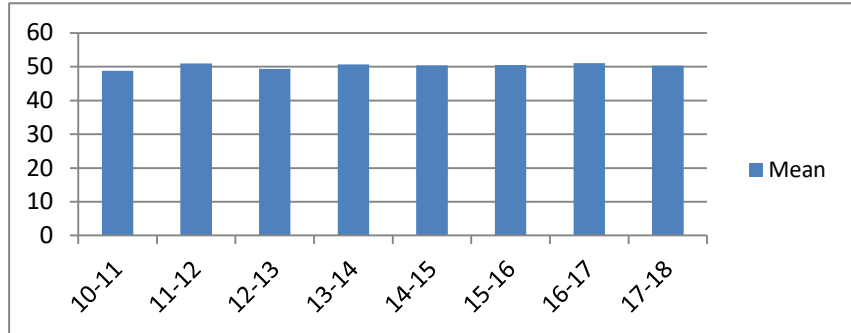


Average Probation Lengths in Months by Felony Class

Note: Column N indicates the number of felony convictions. Individual offenders can have multiple convictions. Incarceration includes lifewithout parole and death sentences. Probation includes sentences to community corrections.

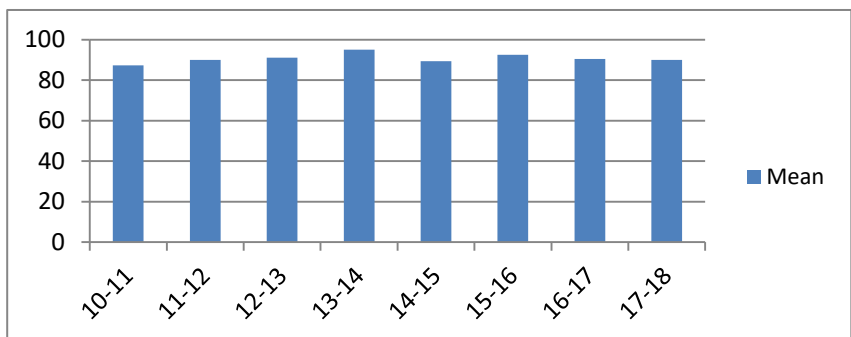
Average Probation Length - Class C - Standard Offenders

Fiscal Year	Mean	Median	Standard Deviation	N
10-11	48.78	48.00	17.66	2,171
11-12	50.91	48.00	16.75	2,275
12-13	49.32	48.00	16.76	2,238
13-14	50.63	48.00	18.31	2,241
14-15	50.39	48.00	17.15	1,997
15-16	50.52	48.00	16.77	2,339
16-17	51.05	48.00	15.94	2,735
17-18	50.25	48.00	15.53	3,049



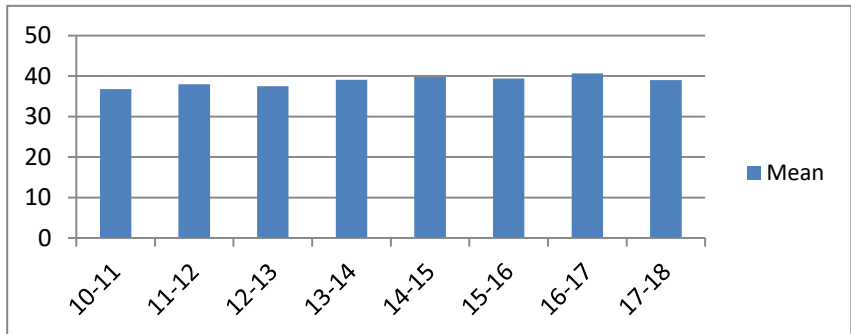
Average Probation Length - Class C - Multiple Offenders

Fiscal Year	Mean	Median	Standard Deviation	N
10-11	87.36	84.00	22.47	157
11-12	89.97	84.00	24.98	168
12-13	91.02	96.00	22.39	216
13-14	94.96	96.00	22.37	209
14-15	89.31	84.00	20.83	263
15-16	92.45	96.00	19.06	292
16-17	90.51	96.00	21.66	310
17-18	89.93	96.00	20.53	316



Average Probation Length - Class D - All Offenders

Fiscal Year	Mean	Median	Standard Deviation	N
10-11	36.75	36.00	16.75	3,386
11-12	37.92	36.00	21.42	3,597
12-13	37.49	36.00	18.92	3,715
13-14	39.04	36.00	20.82	3,554
14-15	39.75	36.00	18.96	3,417
15-16	39.35	36.00	18.60	3,207
16-17	40.63	36.00	20.68	3,474
17-18	39.01	36.00	18.04	3,275

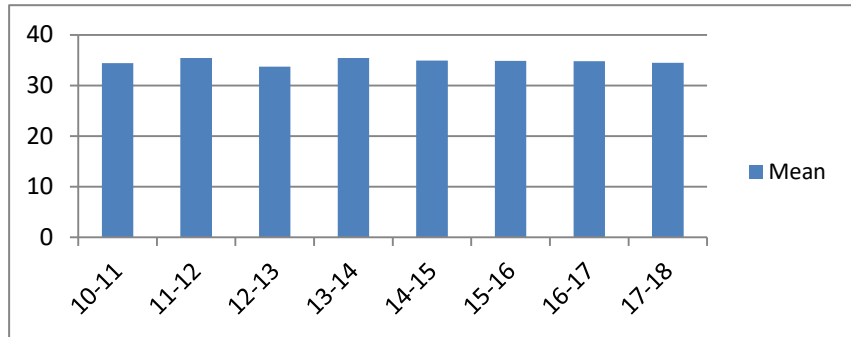


Average Probation Lengths in Months by Felony Class

Note: Column N indicates the number of felony convictions. Individual offenders can have multiple convictions. Incarceration includes lifewithout parole and death sentences. Probation includes sentences to community corrections.

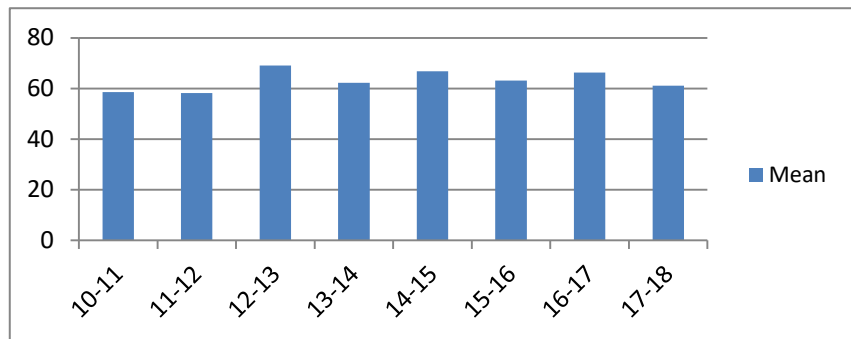
Average Probation Length - Class D - Standard Offenders

Fiscal Year	Mean	Median	Standard Deviation	N
10-11	34.44	36.00	13.69	3,125
11-12	35.42	36.00	18.79	3,297
12-13	33.69	36.00	12.81	3,371
13-14	35.43	36.00	15.98	3,205
14-15	34.89	36.00	12.12	2,967
15-16	34.84	36.00	12.64	2,793
16-17	34.80	36.00	12.53	2,947
17-18	34.47	36.00	11.00	2,844



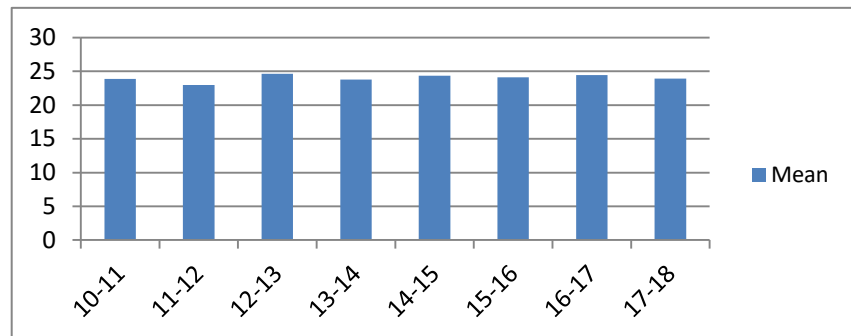
Average Probation Length - Class D - Multiple Offenders

Fiscal Year	Mean	Median	Standard Deviation	N
10-11	58.61	60.00	18.06	221
11-12	58.22	60.00	23.15	246
12-13	69.11	72.00	20.78	299
13-14	62.24	60.00	16.90	274
14-15	66.84	60.00	20.53	380
15-16	63.12	60.00	17.99	338
16-17	66.31	60.00	19.65	424
17-18	61.15	60.00	17.45	353



Average Probation Length - Class E - All Offenders

Fiscal Year	Mean	Median	Standard Deviation	N
10-11	23.84	24.00	15.31	3,810
11-12	22.95	24.00	12.26	3,705
12-13	24.63	24.00	14.76	3,986
13-14	23.78	24.00	12.51	3,951
14-15	24.35	24.00	13.86	3,708
15-16	24.09	24.00	12.12	3,841
16-17	24.42	24.00	12.93	3,944
17-18	23.89	24.00	12.38	4,557

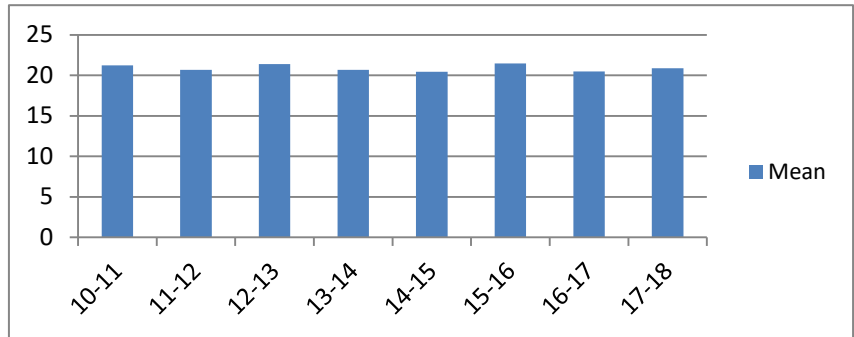


Average Probation Lengths in Months by Felony Class

Note: Column N indicates the number of felony convictions. Individual offenders can have multiple convictions. Incarceration includes lifewithout parole and death sentences. Probation includes sentences to community corrections.

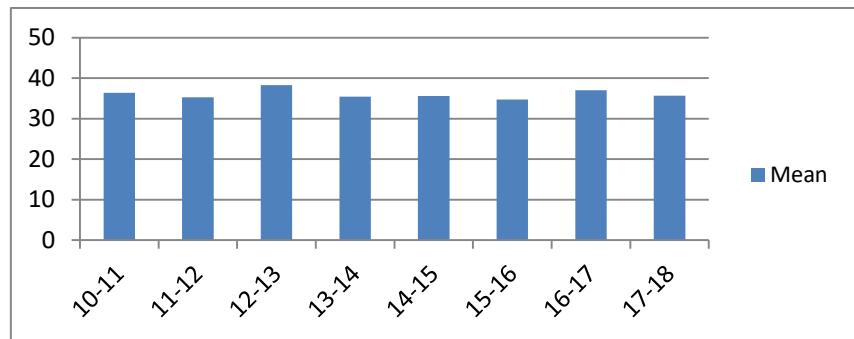
Average Probation Length - Class E - Standard Offenders

Fiscal Year	Mean	Median	Standard Deviation	N
10-11	21.24	24.00	13.01	3,338
11-12	20.68	24.00	9.34	3,284
12-13	21.40	24.00	11.91	3,397
13-14	20.68	24.00	8.51	3,364
14-15	20.43	24.00	10.15	3,015
15-16	21.46	24.00	8.74	3,295
16-17	20.48	24.00	7.52	3,266
17-18	20.88	24.00	8.59	3,883



Average Probation Length - Class E - Multiple Offenders

Fiscal Year	Mean	Median	Standard Deviation	N
10-11	36.41	36.00	10.48	383
11-12	35.26	36.00	10.53	340
12-13	38.25	42.00	10.58	462
13-14	35.42	36.00	10.95	449
14-15	35.59	36.00	10.66	541
15-16	34.69	36.00	10.42	451
16-17	36.97	36.00	10.86	510
17-18	35.69	36.00	11.27	522

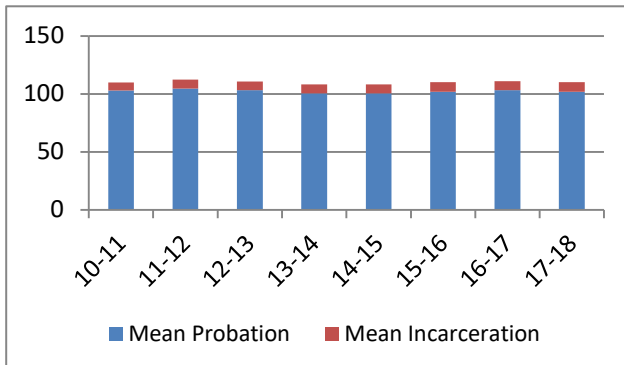


Average Split Sentence Lengths in Months by Felony Class

Note: Column N indicates the number of felony convictions. Individual offenders can have multiple convictions. Incarceration includes life without parole and death sentences. Probation includes sentences to community corrections.

Average Sentence Length - Felony Class B - All Offenders

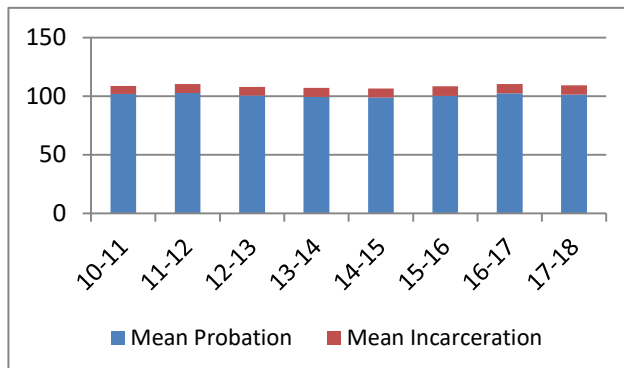
Fiscal Year	Months of Incarceration				Months of Probation			
	Mean	Median	Standard Deviation	N	Mean	Median	Standard Deviation	N
10-11	6.9	6.0	4.4	498	102.9	96.0	20.5	498
11-12	7.6	8.2	4.2	443	104.7	96.0	20.4	443
12-13	7.6	6.2	4.9	462	103.1	96.0	23.3	462
13-14	7.6	6.0	4.1	384	100.5	96.0	18.1	384
14-15	7.8	9.0	4.1	463	100.4	96.0	19.0	463
15-16	8.3	9.0	4.0	471	101.9	96.0	18.0	471
16-17	7.7	6.0	4.1	779	103.2	96.0	16.4	779
17-18	8.1	6.9	3.9	879	101.9	96.0	16.1	879



frequencies.

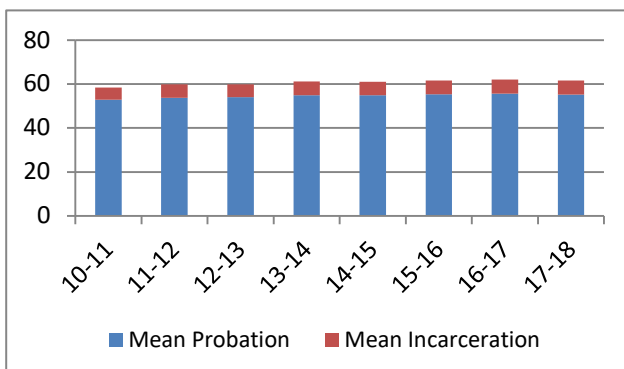
Average Sentence Length - Felony Class B - Standard Offenders

Fiscal Year	Months of Incarceration				Months of Probation			
	Mean	Median	Standard Deviation	N	Mean	Median	Standard Deviation	N
10-11	6.9	6.0	4.4	483	101.8	96.0	19.6	483
11-12	7.6	8.0	4.2	417	102.7	96.0	17.5	417
12-13	7.5	6.0	4.9	445	100.4	96.0	16.1	445
13-14	7.5	6.0	4.1	374	99.4	96.0	15.8	374
14-15	7.8	9.0	4.1	445	98.7	96.0	16.1	445
15-16	8.3	9.0	4.0	452	100.2	96.0	15.3	452
16-17	7.7	6.0	4.1	766	102.4	96.0	14.3	766
17-18	8.0	6.9	3.9	863	101.2	96.0	14.4	863



Average Sentence Length - Class C - All Offenders

Fiscal Year	Months of Incarceration				Months of Probation			
	Mean	Median	Standard Deviation	N	Mean	Median	Standard Deviation	N
10-11	5.5	4.4	4.1	1,463	52.9	48.0	22.8	1,463
11-12	6.1	5.9	4.2	1,501	53.7	48.0	21.9	1,501
12-13	5.9	4.9	4.1	1,434	54.0	48.0	21.1	1,434
13-14	6.3	5.9	4.1	1,415	54.9	48.0	21.4	1,415
14-15	6.2	5.9	4.1	1,381	54.9	48.0	22.3	1,381
15-16	6.2	5.9	4.1	1,665	55.4	48.0	21.5	1,665
16-17	6.4	6.0	4.1	2,003	55.7	48.0	23.0	2,003
17-18	6.4	6.0	4.1	2,215	55.2	48.0	21.2	2,215

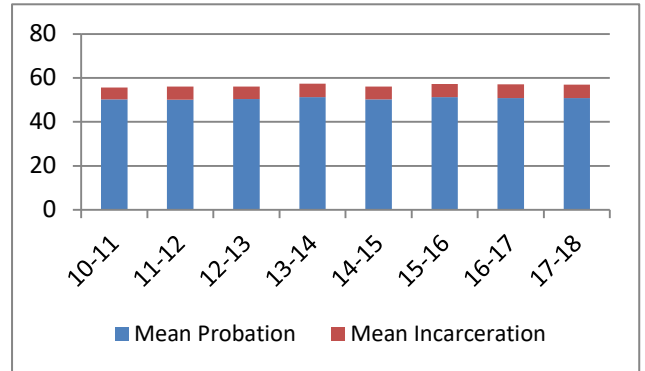


Average Split Sentence Lengths in Months by Felony Class

Note: Column N indicates the number of felony convictions. Individual offenders can have multiple convictions. Incarceration includes life without parole and death sentences. Probation includes sentences to community corrections.

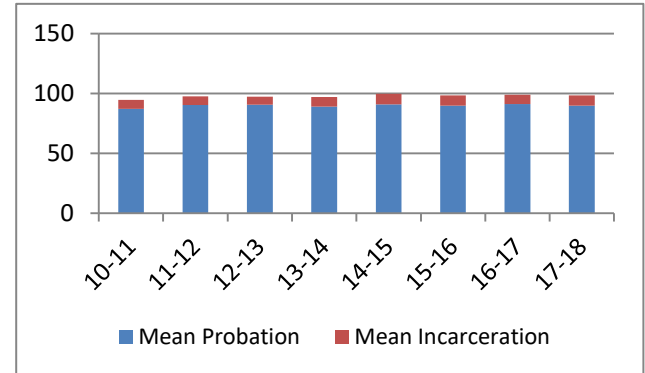
Average Sentence Length - Class C - Standard Offenders

Fiscal Year	Months of Incarceration				Months of Probation			
	Mean	Median	Standard Deviation	N	Mean	Median	Standard Deviation	N
10-11	5.3	4.0	4.1	1,359	50.2	48.0	20.1	1,359
11-12	5.9	5.0	4.2	1,380	50.1	48.0	17.6	1,380
12-13	5.8	4.3	4.1	1,301	50.3	48.0	17.4	1,301
13-14	6.1	5.9	4.1	1,285	51.3	48.0	17.6	1,285
14-15	5.8	4.9	4.0	1,218	50.2	48.0	16.4	1,218
15-16	5.9	5.9	4.1	1,498	51.3	48.0	17.1	1,498
16-17	6.3	6.0	4.0	1,778	50.8	48.0	16.6	1,778
17-18	6.1	5.9	4.0	1,974	50.8	48.0	16.6	1,974



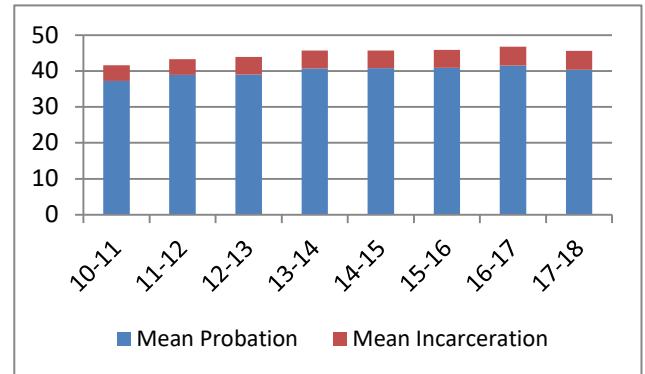
Average Sentence Length - Class C - Multiple Offenders

Fiscal Year	Months of Incarceration				Months of Probation			
	Mean	Median	Standard Deviation	N	Mean	Median	Standard Deviation	N
10-11	7.4	6.6	4.2	89	87.2	84.0	22.6	89
11-12	7.4	9.0	4.3	108	90.2	96.0	18.7	108
12-13	6.7	6.0	4.5	125	90.7	96.0	19.3	125
13-14	8.0	8.0	4.1	118	89.0	87.5	20.8	118
14-15	8.7	12.0	4.0	142	90.9	95.3	24.3	142
15-16	8.4	12.0	4.2	150	89.8	95.5	22.3	150
16-17	7.7	7.1	4.2	195	91.2	90.0	25.8	195
17-18	8.7	12.0	4.2	225	89.7	93.2	19.1	225



Average Sentence Length - Class D - All Offenders

Fiscal Year	Months of Incarceration				Months of Probation			
	Mean	Median	Standard Deviation	N	Mean	Median	Standard Deviation	N
10-11	4.3	3.0	3.6	1,647	37.3	36.0	18.5	1,647
11-12	4.3	3.0	3.5	1,604	38.9	36.0	18.3	1,604
12-13	4.9	3.9	3.9	1,642	39.0	36.0	20.4	1,642
13-14	5.0	3.9	3.9	1,478	40.7	36.0	19.7	1,478
14-15	4.9	3.6	3.8	1,476	40.8	36.0	19.3	1,476
15-16	5.0	3.9	3.8	1,498	40.9	36.0	19.4	1,498
16-17	5.3	3.9	3.9	1,655	41.5	36.0	21.0	1,655
17-18	5.3	4.0	3.9	1,470	40.3	36.0	18.7	1,470

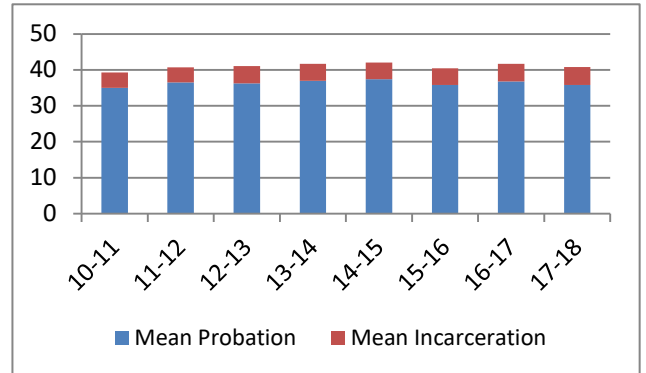


Average Split Sentence Lengths in Months by Felony Class

Note: Column N indicates the number of felony convictions. Individual offenders can have multiple convictions. Incarceration includes life without parole and death sentences. Probation includes sentences to community corrections.

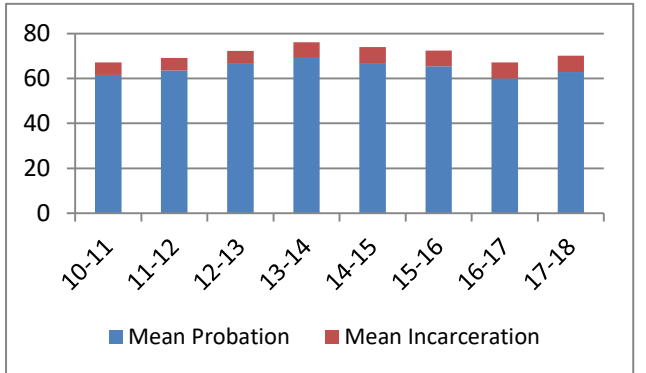
Average Sentence Length - Class D - Standard Offenders

Fiscal Year	Months of Incarceration				Months of Probation			
	Mean	Median	Standard Deviation	N	Mean	Median	Standard Deviation	N
10-11	4.3	3.0	3.6	1,542	35.0	35.0	15.3	1,542
11-12	4.2	3.0	3.5	1,478	36.5	36.0	15.3	1,478
12-13	4.8	3.7	3.9	1,521	36.2	36.0	17.3	1,521
13-14	4.7	3.3	3.8	1,322	37.0	36.0	15.6	1,322
14-15	4.7	3.1	3.6	1,327	37.4	36.0	15.6	1,327
15-16	4.7	3.0	3.6	1,286	35.8	36.0	12.9	1,286
16-17	4.9	3.7	3.8	1,433	36.7	36.0	13.9	1,433
17-18	5.0	3.9	3.7	1,261	35.8	36.0	13.4	1,261



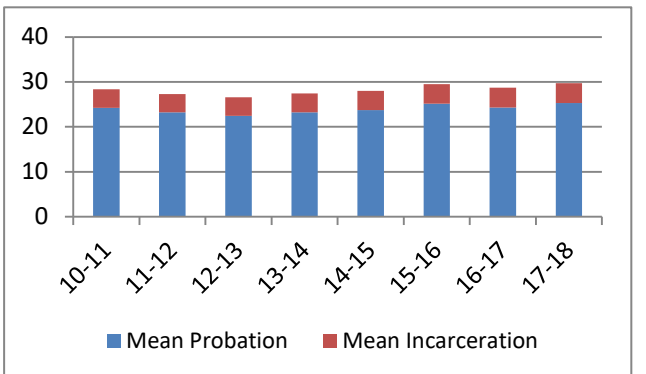
Average Sentence Length - Class D - Multiple Offenders

Fiscal Year	Months of Incarceration				Months of Probation			
	Mean	Median	Standard Deviation	N	Mean	Median	Standard Deviation	N
10-11	5.6	5.0	3.7	86	61.5	57.2	19.4	86
11-12	5.5	4.7	3.9	110	63.6	60.0	20.0	110
12-13	5.4	4.5	4.0	98	66.8	72.0	19.9	98
13-14	7.0	6.0	4.4	131	69.1	72.0	18.2	131
14-15	7.0	6.0	4.8	134	66.9	69.0	17.4	134
15-16	6.9	6.0	4.0	173	65.4	60.0	18.7	173
16-17	7.2	6.0	4.3	168	60.0	60.0	18.1	168
17-18	7.2	6.0	4.4	183	62.9	60.0	19.0	183



Average Sentence Length - Class E - All Offenders

Fiscal Year	Months of Incarceration				Months of Probation			
	Mean	Median	Standard Deviation	N	Mean	Median	Standard Deviation	N
10-11	4.1	3.0	3.1	1,943	24.2	24.0	14.3	1,943
11-12	4.1	3.0	3.2	1,805	23.2	23.0	13.8	1,805
12-13	4.1	3.0	3.1	1,763	22.4	22.5	14.2	1,763
13-14	4.2	3.0	3.2	1,472	23.2	24.0	13.3	1,472
14-15	4.3	3.0	3.3	1,577	23.7	24.0	13.6	1,577
15-16	4.4	3.0	3.4	1,713	25.1	24.0	16.7	1,713
16-17	4.5	3.0	3.4	1,955	24.3	24.0	12.7	1,955
17-18	4.4	3.3	3.2	1,992	25.3	24.0	14.8	1,992

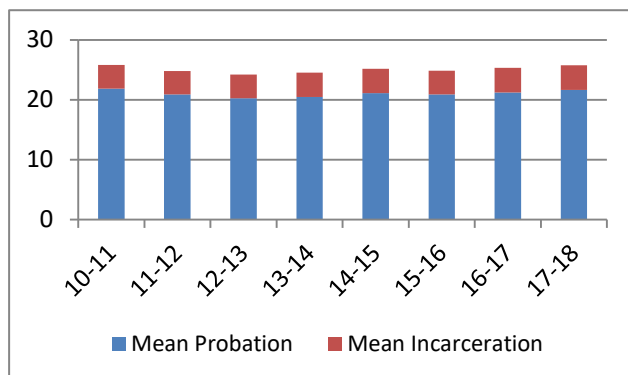


Average Split Sentence Lengths in Months by Felony Class

Note: Column N indicates the number of felony convictions. Individual offenders can have multiple convictions. Incarceration includes life without parole and death sentences. Probation includes sentences to community corrections.

Average Sentence Length - Class E - Standard Offenders

Fiscal Year	Months of Incarceration				Months of Probation			
	Mean	Median	Standard Deviation	N	Mean	Median	Standard Deviation	N
10-11	3.9	3.0	3.0	1,690	21.8	23.0	12.3	1,690
11-12	3.9	3.0	3.0	1,568	20.9	21.0	11.4	1,568
12-13	4.0	3.0	3.0	1,576	20.3	21.0	10.5	1,576
13-14	4.1	3.0	3.1	1,275	20.5	22.2	10.7	1,275
14-15	4.0	3.0	3.1	1,362	21.1	23.0	11.4	1,362
15-16	4.0	3.0	3.1	1,424	20.9	23.6	9.7	1,424
16-17	4.1	3.0	3.2	1,645	21.2	24.0	9.4	1,645
17-18	4.1	3.0	3.0	1,624	21.6	24.0	12.3	1,624



Average Sentence Length - Class E - Multiple Offenders

Fiscal Year	Months of Incarceration				Months of Probation			
	Mean	Median	Standard Deviation	N	Mean	Median	Standard Deviation	N
10-11	5.0	4.0	3.6	210	35.6	36.0	12.5	210
11-12	5.1	4.0	3.9	199	34.9	36.0	14.6	199
12-13	5.4	4.9	3.8	144	34.6	36.0	12.3	144
13-14	4.7	4.9	3.2	159	36.3	36.0	10.7	159
14-15	5.6	4.9	4.0	177	36.8	36.0	11.5	177
15-16	6.3	5.9	4.2	229	41.9	36.0	26.5	229
16-17	6.3	5.9	3.8	257	36.6	36.0	11.5	257
17-18	6.0	5.0	3.8	309	37.6	36.0	11.1	309

