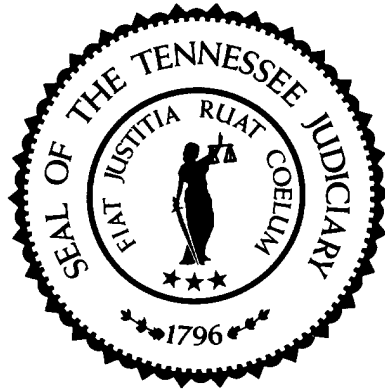


# Sentencing Practices in Tennessee



Administrative Office of the Courts

Information for Cases Sentenced  
Between July 1, 2015 and June 30, 2023

TDOC Data Extracted: March 2024  
Released: March 2024

# Sentencing Practices in Tennessee

## Table of Contents

|  |    |
|--|----|
| Methodology                              | 1  |
| Sentence Type Information                |    |
| Class A                                  | 3  |
| Class B                                  | 3  |
| Class C                                  | 4  |
| Class D                                  | 4  |
| Class E                                  | 4  |
| Average Incarceration Lengths in Months  |    |
| Class A                                  | 5  |
| Rape of Child                            | 6  |
| Second Degree Murder                     | 6  |
| Especially Aggravated Kidnapping         | 7  |
| Class B                                  | 8  |
| Schedule II Cocaine                      | 9  |
| Aggravated Robbery                       | 10 |
| Aggravated Sexual Battery                | 11 |
| Class C                                  | 12 |
| Aggravated Burglary                      | 13 |
| Aggravated Assault                       | 14 |
| Schedule II Cocaine < ½ Gram             | 15 |
| Schedule II Drugs: Max \$100,000 Fine    | 16 |
| Class D                                  | 17 |
| Theft: \$1,000 to \$10,000               | 18 |
| Burglary Other Than Habitation           | 19 |
| Identity Theft                           | 20 |
| Obtain Drugs by Fraud                    | 21 |
| Class E                                  | 22 |
| Forgery: Up to \$1,000                   | 23 |
| Burglary: Auto                           | 24 |
| Theft: \$500 to \$1,000                  | 25 |
| Schedule VI Drugs: Not < ½ Ounce         | 26 |
| Habitual Traffic Offender                | 27 |
| Failure to Appear (Felony)               | 28 |
| Average Probation Lengths in Months      |    |
| Class B                                  | 29 |
| Class C                                  | 30 |
| Class D                                  | 31 |
| Class E                                  | 32 |
| Average Split Sentence Lengths in Months |    |
| Class B                                  | 33 |
| Class C                                  | 34 |
| Class D                                  | 35 |
| Class E                                  | 36 |

## Methodology

The data used in evaluating sentencing practices comes from the Tennessee Department of Correction (TDOC); where individual offense data is captured. Each offense sentence is recorded individually, including cases of multiple offense convictions and eliminating the potential confusion in determining sentence lengths created by these multiple offense convictions. To establish a baseline for comparison purposes, data from multiple years was queried. The initial focus of this analysis consisted of cases where the defendants received incarceration only, either in a TDOC facility or a local jail. That has been expanded to include probation and alternative sentencing information as well. This data is not a sample, but is the entire population of sentences captured by the TDOC during the analyzed time frame.

Sentence lengths are reported for standard offenders, multiple offenders and for all offender types as a group from the body of convicted felons in the State Criminal or Circuit Criminal Courts. Standard and multiple offender defendant types were chosen because they comprise over 90% of all sentences in Tennessee.

Specific offenses are included in analysis first by choosing the top three most frequently occurring offenses in each felony class, then by a combination of occurrence frequency, overall impact on sentence length and by the increasing in frequency of the occurrence of the offense (i.e. the offense is happening in increasing amounts, but was not historically happening in large numbers). The following offenses make nearly 70% of convicted offenses and are included in the statistic table report.

Class A  
Rape of a Child  
Second Degree Murder  
Especially Aggravated Kidnapping  
Class B  
Schedule II Drugs: Cocaine  
Aggravated Robbery  
Aggravated Sexual Battery  
Class C  
Aggravated Burglary  
Aggravated Assault  
Schedule II Drugs: Cocaine < 1/2 Gram  
Schedule II Drugs: Up to \$100,000 Fine  
Class D  
Theft: \$1,000 to \$10,000  
Burglary: Other than Habitation or Auto  
Identity Theft  
Obtain Drugs by Fraud  
Class E  
Forgery: Up to \$1,000  
Burglary: Auto  
Theft: \$500 to \$1,000  
Schedule VI Drugs: Not Less than ½ Ounce  
Habitual Traffic Offender  
Failure to Appear (Felony)

Data for each felony class and defendant type (standard, multiple and all) are presented as well. The tables for the offenses listed and for the felony classes display the mean and median sentence lengths in months, the standard deviation, and the number of convictions for each year reported. This report contains basic incarceration, probation and alternative sentencing information and can be used for the following:

- analyzing trends
- evaluating the effectiveness of legislation aimed at reducing incarceration rates

Given that this data does not include demographic information; it cannot be used to evaluate any scenarios or trends that involve demographic references.

### **Note 1**

The numbers presented here and in previous reports may vary for the same years. Discrepancies are due in part to delayed reporting to the Tennessee Department of Corrections and parole violations over time. Also, due to delayed reporting to TDOC, the total population in recent years may not be included in the analysis at the time of publication.

### **Note 2**

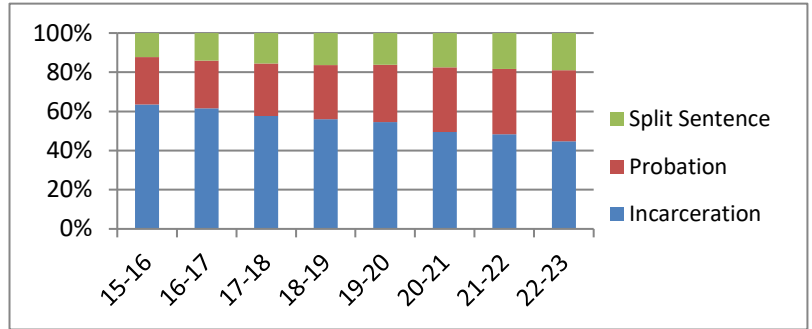
It should be noted that the numbers of filings and dispositions were reduced statewide due to the impacts of the Covid 19 pandemic on the operations of the courts. The end effect of this was a reduction overall in the number of sentences passed during this fiscal year. This can be noted in the N columns of the data grids in the various categories of the report.

# Sentence Type Information

Note: Column N Indicates the number of felony convictions. Individual offenders can have multiple convictions. Incarceration includes life without parole and death sentences. Probation includes sentences to community corrections.

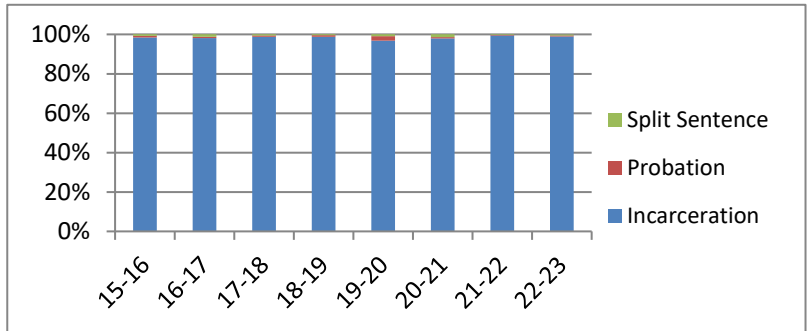
**Percent of Sentence Type - All Felony Classes - All Offenders**

| Fiscal Year | Incarceration | Probation | Split Sentence | N      |
|-------------|---------------|-----------|----------------|--------|
|             | Percent       | Percent   | Percent        |        |
| 15-16       | 63.5%         | 24.2%     | 12.3%          | 28,669 |
| 16-17       | 61.6%         | 24.4%     | 14.0%          | 27,079 |
| 17-18       | 57.6%         | 26.8%     | 15.6%          | 33,878 |
| 18-19       | 56.0%         | 27.7%     | 16.3%          | 33,574 |
| 19-20       | 54.6%         | 29.2%     | 16.2%          | 21,083 |
| 20-21       | 49.4%         | 33.1%     | 17.5%          | 19,715 |
| 21-22       | 48.4%         | 33.3%     | 18.3%          | 27,789 |
| 22-23       | 44.7%         | 36.4%     | 18.9%          | 27,874 |



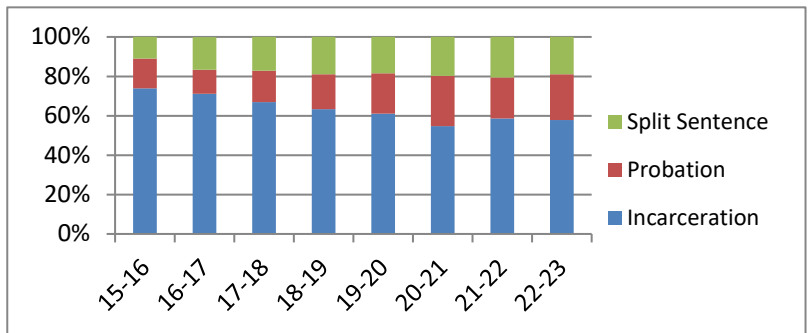
**Percent of Sentence Type - Felony Class A - All Offenders**

| Fiscal Year | Incarceration | Probation | Split Sentence | N   |
|-------------|---------------|-----------|----------------|-----|
|             | Percent       | Percent   | Percent        |     |
| 15-16       | 98.4%         | 0.9%      | 0.7%           | 430 |
| 16-17       | 98.1%         | 0.6%      | 1.4%           | 362 |
| 17-18       | 98.8%         | 0.7%      | 0.5%           | 581 |
| 18-19       | 98.8%         | 0.8%      | 0.4%           | 507 |
| 19-20       | 96.9%         | 2.2%      | 0.9%           | 324 |
| 20-21       | 97.9%         | 0.7%      | 1.4%           | 281 |
| 21-22       | 99.5%         | 0.3%      | 0.2%           | 572 |
| 22-23       | 98.9%         | 0.5%      | 0.5%           | 567 |



**Percent of Sentence Type - Felony Class B - All Offenders**

| Fiscal Year | Incarceration | Probation | Split Sentence | N     |
|-------------|---------------|-----------|----------------|-------|
|             | Percent       | Percent   | Percent        |       |
| 15-16       | 73.9%         | 15.2%     | 10.9%          | 2,502 |
| 16-17       | 71.1%         | 12.2%     | 16.6%          | 2,765 |
| 17-18       | 66.9%         | 16.0%     | 17.1%          | 3,833 |
| 18-19       | 63.4%         | 17.6%     | 19.0%          | 4,309 |
| 19-20       | 61.0%         | 20.6%     | 18.5%          | 2,962 |
| 20-21       | 54.7%         | 25.5%     | 19.8%          | 3,206 |
| 21-22       | 58.7%         | 20.8%     | 20.5%          | 4,559 |
| 22-23       | 57.8%         | 23.3%     | 18.9%          | 4,372 |

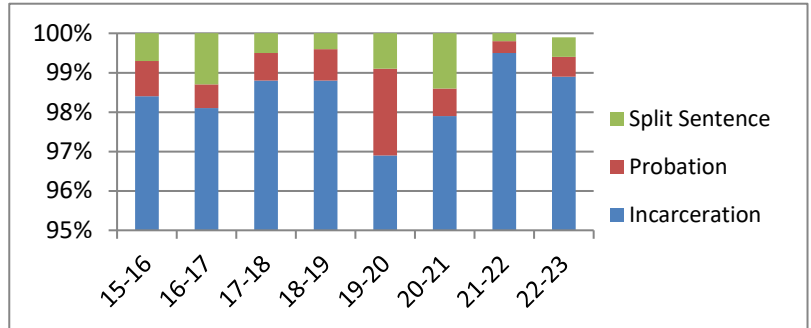


# Sentence Type Information

Note: Column N Indicates the number of felony convictions. Individual offenders can have multiple convictions. Incarceration includes life without parole and death sentences. Probation includes sentences to community corrections.

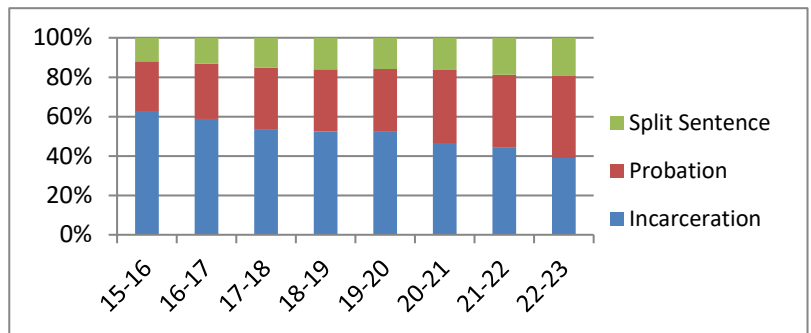
**Percent of Sentence Type - Felony Class C - All Offenders**

| Fiscal Year | Incarceration | Probation | Split Sentence | N   |
|-------------|---------------|-----------|----------------|-----|
|             | Percent       | Percent   | Percent        |     |
| 15-16       | 98.4%         | 0.9%      | 0.7%           | 430 |
| 16-17       | 98.1%         | 0.6%      | 1.4%           | 362 |
| 17-18       | 98.8%         | 0.7%      | 0.5%           | 581 |
| 18-19       | 98.8%         | 0.8%      | 0.4%           | 507 |
| 19-20       | 96.9%         | 2.2%      | 0.9%           | 324 |
| 20-21       | 97.9%         | 0.7%      | 1.4%           | 281 |
| 21-22       | 99.5%         | 0.3%      | 0.2%           | 572 |
| 22-23       | 98.9%         | 0.5%      | 0.5%           | 567 |



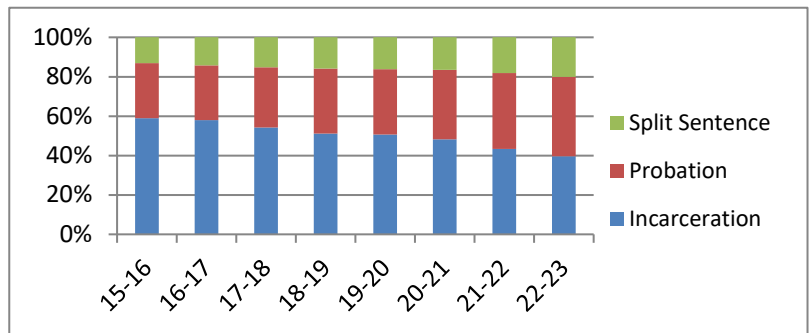
**Percent of Sentence Type - Felony Class D - All Offenders**

| Fiscal Year | Incarceration | Probation | Split Sentence | N     |
|-------------|---------------|-----------|----------------|-------|
|             | Percent       | Percent   | Percent        |       |
| 15-16       | 62.3%         | 25.7%     | 12.0%          | 8,253 |
| 16-17       | 58.8%         | 28.1%     | 13.1%          | 7,205 |
| 17-18       | 53.2%         | 31.6%     | 15.2%          | 7,966 |
| 18-19       | 52.4%         | 31.6%     | 16.0%          | 7,629 |
| 19-20       | 52.7%         | 31.5%     | 15.8%          | 4,944 |
| 20-21       | 46.2%         | 37.5%     | 16.3%          | 4,788 |
| 21-22       | 44.2%         | 37.1%     | 18.7%          | 6,640 |
| 22-23       | 38.9%         | 42.0%     | 19.1%          | 6,859 |



**Percent of Sentence Type - Felony Class E - All Offenders**

| Fiscal Year | Incarceration | Probation | Split Sentence | N      |
|-------------|---------------|-----------|----------------|--------|
|             | Percent       | Percent   | Percent        |        |
| 15-16       | 59.0%         | 27.9%     | 13.1%          | 9,611  |
| 16-17       | 58.0%         | 27.7%     | 14.3%          | 8,882  |
| 17-18       | 54.2%         | 30.6%     | 15.2%          | 11,245 |
| 18-19       | 51.1%         | 33.1%     | 15.8%          | 10,670 |
| 19-20       | 50.6%         | 33.3%     | 16.1%          | 6,303  |
| 20-21       | 48.3%         | 35.2%     | 16.5%          | 5,288  |
| 21-22       | 43.3%         | 38.6%     | 18.2%          | 7,438  |
| 22-23       | 39.7%         | 40.2%     | 20.1%          | 7,315  |

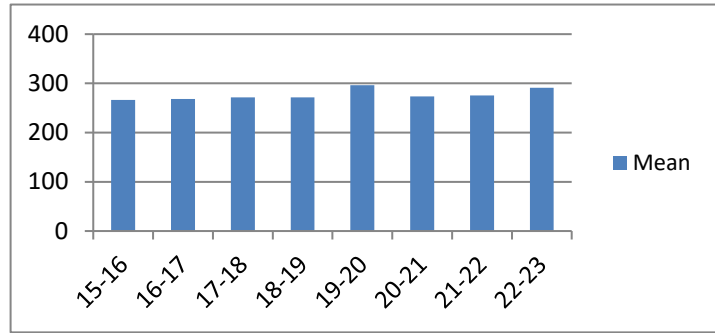


## Average Incarceration Lengths in Months by Felony Class and Offense

Note: Column N indicates the number of felony convictions. Individual offenders can have multiple convictions. Incarceration includes life without parole and death sentences. Probation includes sentences to community corrections.

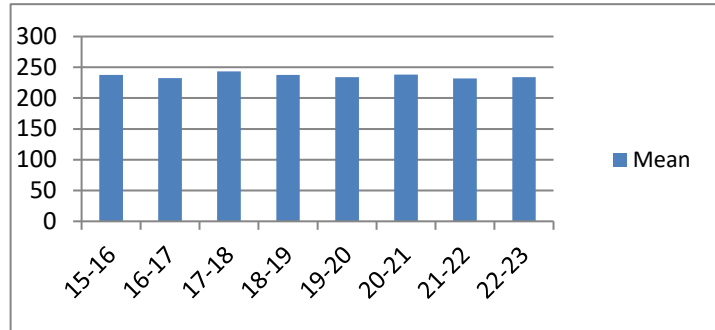
**Average Incarceration Length - Class A - All Offenders**

| Fiscal Year | Mean   | Median | Standard Deviation | N   |
|-------------|--------|--------|--------------------|-----|
| 15-16       | 266.66 | 240.00 | 98.32              | 422 |
| 16-17       | 268.22 | 240.00 | 98.54              | 351 |
| 17-18       | 271.46 | 264.00 | 90.83              | 573 |
| 18-19       | 271.74 | 240.00 | 95.88              | 501 |
| 19-20       | 296.37 | 264.00 | 132.94             | 314 |
| 20-21       | 273.27 | 276.00 | 91.53              | 275 |
| 21-22       | 275.42 | 240.00 | 103.11             | 568 |
| 22-23       | 291.05 | 276.00 | 114.64             | 559 |



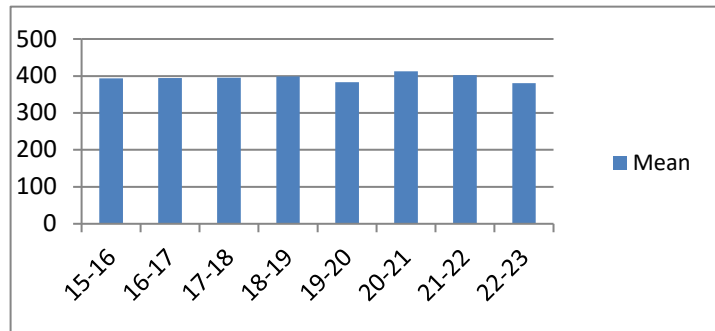
**Average Incarceration Length - Class A - Standard Offenders**

| Fiscal Year | Mean   | Median | Standard Deviation | N   |
|-------------|--------|--------|--------------------|-----|
| 15-16       | 237.59 | 240.00 | 52.87              | 334 |
| 16-17       | 232.62 | 240.00 | 50.57              | 266 |
| 17-18       | 243.33 | 240.00 | 48.30              | 449 |
| 18-19       | 237.87 | 240.00 | 51.68              | 381 |
| 19-20       | 234.08 | 240.00 | 56.66              | 216 |
| 20-21       | 238.27 | 240.00 | 53.65              | 204 |
| 21-22       | 231.95 | 240.00 | 51.25              | 409 |
| 22-23       | 233.78 | 240.00 | 50.31              | 359 |



**Average Incarceration Length - Class A - Multiple Offenders**

| Fiscal Year | Mean   | Median | Standard Deviation | N   |
|-------------|--------|--------|--------------------|-----|
| 15-16       | 393.44 | 384.00 | 82.57              | 68  |
| 16-17       | 394.39 | 360.00 | 59.67              | 67  |
| 17-18       | 395.19 | 360.00 | 56.97              | 89  |
| 18-19       | 398.87 | 360.00 | 53.79              | 92  |
| 19-20       | 383.14 | 360.00 | 52.66              | 70  |
| 20-21       | 412.98 | 420.00 | 51.89              | 57  |
| 21-22       | 402.09 | 396.00 | 61.56              | 132 |
| 22-23       | 380.93 | 360.00 | 69.24              | 166 |

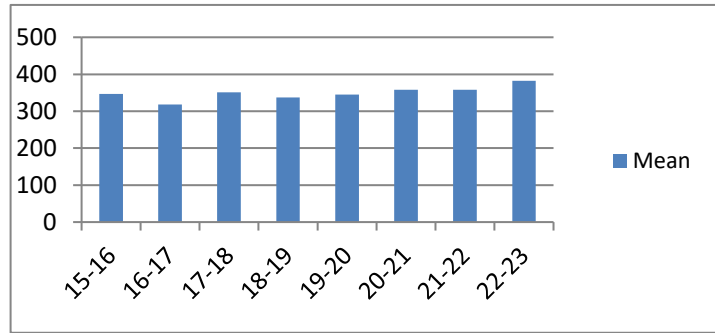


## Average Incarceration Lengths in Months by Felony Class and Offense

Note: Column N indicates the number of felony convictions. Individual offenders can have multiple convictions. Incarceration includes life without parole and death sentences. Probation includes sentences to community corrections.

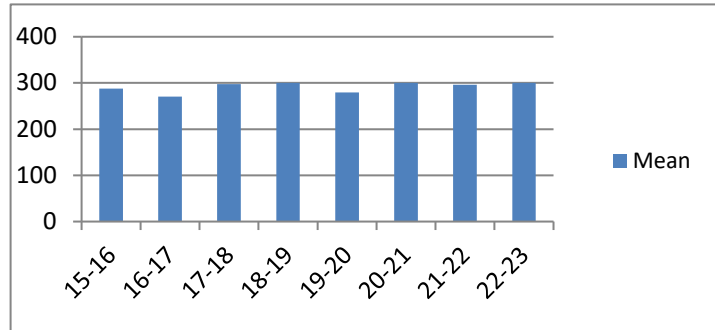
### Average Incarceration Length - Rape of a Child - All Offenders

| Fiscal Year | Mean   | Median | Standard Deviation | N   |
|-------------|--------|--------|--------------------|-----|
| 15-16       | 346.80 | 300.00 | 101.77             | 50  |
| 16-17       | 318.49 | 300.00 | 76.62              | 74  |
| 17-18       | 351.48 | 300.00 | 72.11              | 100 |
| 18-19       | 337.55 | 300.00 | 46.54              | 85  |
| 19-20       | 344.68 | 360.00 | 60.95              | 65  |
| 20-21       | 357.89 | 360.00 | 68.72              | 57  |
| 21-22       | 357.83 | 360.00 | 66.08              | 83  |
| 22-23       | 382.47 | 360.00 | 85.97              | 133 |



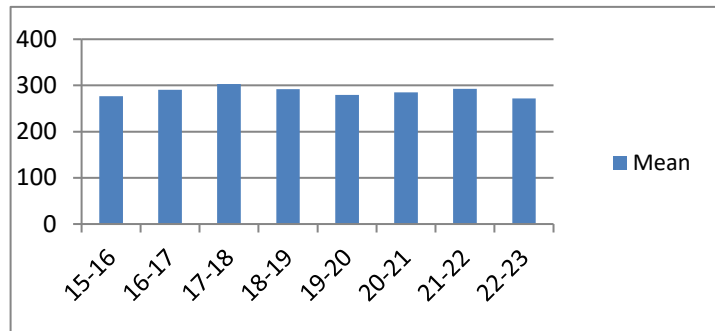
### Average Incarceration Length - Rape of a Child - Standard Offenders

| Fiscal Year | Mean   | Median | Standard Deviation | N  |
|-------------|--------|--------|--------------------|----|
| 15-16       | 288.00 | 300.00 | 29.93              | 28 |
| 16-17       | 270.70 | 300.00 | 49.64              | 43 |
| 17-18       | 297.82 | 300.00 | 11.34              | 55 |
| 18-19       | 300.00 | 300.00 | 0.00               | 44 |
| 19-20       | 279.16 | 300.00 | 44.87              | 19 |
| 20-21       | 300.00 | 300.00 | 0.00               | 28 |
| 21-22       | 296.13 | 300.00 | 21.55              | 31 |
| 22-23       | 300.00 | 300.00 | 0.00               | 32 |



### Average Incarceration Length - Second Degree Murder - All Offenders

| Fiscal Year | Mean   | Median | Standard Deviation | N   |
|-------------|--------|--------|--------------------|-----|
| 15-16       | 276.61 | 240.00 | 94.35              | 94  |
| 16-17       | 290.74 | 300.00 | 97.64              | 70  |
| 17-18       | 302.72 | 300.00 | 102.67             | 97  |
| 18-19       | 292.24 | 288.00 | 99.42              | 126 |
| 19-20       | 279.35 | 264.00 | 90.51              | 68  |
| 20-21       | 285.10 | 276.00 | 96.44              | 78  |
| 21-22       | 292.36 | 300.00 | 94.92              | 161 |
| 22-23       | 271.96 | 240.00 | 94.16              | 144 |



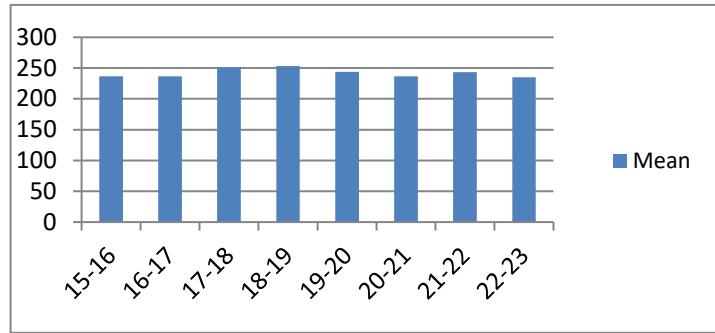


## Average Incarceration Lengths in Months by Felony Class and Offense

Note: Column N indicates the number of felony convictions. Individual offenders can have multiple convictions. Incarceration includes life without parole and death sentences. Probation includes sentences to community corrections.

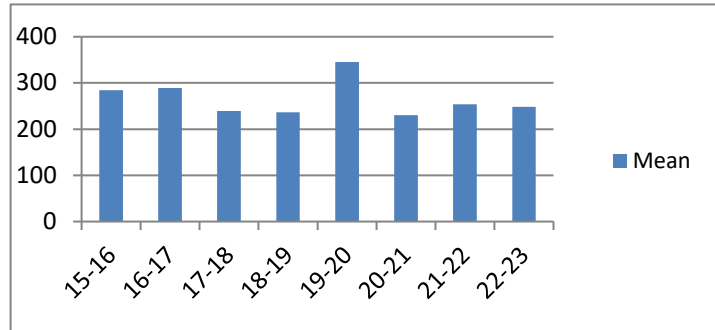
### Average Incarceration Length - Second Degree Murder - Standard Offenders

| Fiscal Year | Mean   | Median | Standard Deviation | N   |
|-------------|--------|--------|--------------------|-----|
| 15-16       | 236.82 | 240.00 | 43.09              | 67  |
| 16-17       | 236.82 | 240.00 | 49.28              | 49  |
| 17-18       | 250.98 | 252.00 | 45.52              | 59  |
| 18-19       | 253.30 | 240.00 | 44.21              | 97  |
| 19-20       | 243.96 | 240.00 | 45.06              | 50  |
| 20-21       | 236.69 | 240.00 | 47.74              | 52  |
| 21-22       | 243.60 | 240.00 | 46.66              | 105 |
| 22-23       | 235.19 | 240.00 | 45.61              | 111 |



### Average Incarceration Length - Especially Aggravated Kidnapping - All Offenders

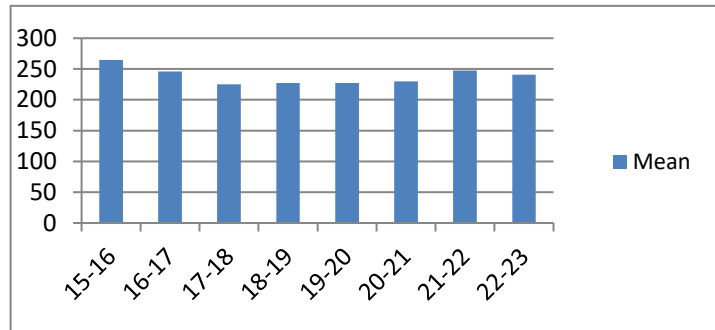
| Fiscal Year | Mean   | Median | Standard Deviation | N  |
|-------------|--------|--------|--------------------|----|
| 15-16       | 284.11 | 300.00 | 106.24             | 57 |
| 16-17       | 289.35 | 240.00 | 146.97             | 31 |
| 17-18       | 239.27 | 240.00 | 61.62              | 33 |
| 18-19       | 236.48 | 240.00 | 64.27              | 46 |
| 19-20       | 345.12 | 240.00 | 207.97             | 25 |
| 20-21       | 230.00 | 198.00 | 55.64              | 9  |
| 21-22       | 253.95 | 240.00 | 64.16              | 37 |
| 22-23       | 248.16 | 240.00 | 52.96              | 25 |



low occurrence frequencies.

### Average Incarceration Length - Especially Aggravated Kidnapping - Standard Offenders

| Fiscal Year | Mean   | Median | Standard Deviation | N  |
|-------------|--------|--------|--------------------|----|
| 15-16       | 264.48 | 300.00 | 56.91              | 50 |
| 16-17       | 246.22 | 240.00 | 31.11              | 27 |
| 17-18       | 225.20 | 210.00 | 43.06              | 30 |
| 18-19       | 227.08 | 240.00 | 41.70              | 39 |
| 19-20       | 227.33 | 228.00 | 47.19              | 18 |
| 20-21       | 230.00 | 198.00 | 55.64              | 9  |
| 21-22       | 247.67 | 240.00 | 52.28              | 36 |
| 22-23       | 241.00 | 240.00 | 39.86              | 24 |

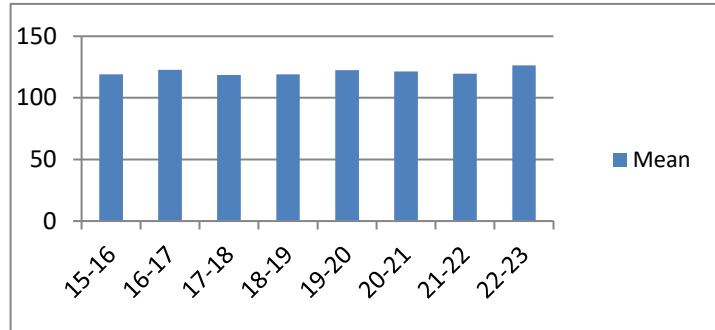


## Average Incarceration Lengths in Months by Felony Class and Offense

Note: Column N indicates the number of felony convictions. Individual offenders can have multiple convictions. Incarceration includes life without parole and death sentences. Probation includes sentences to community corrections.

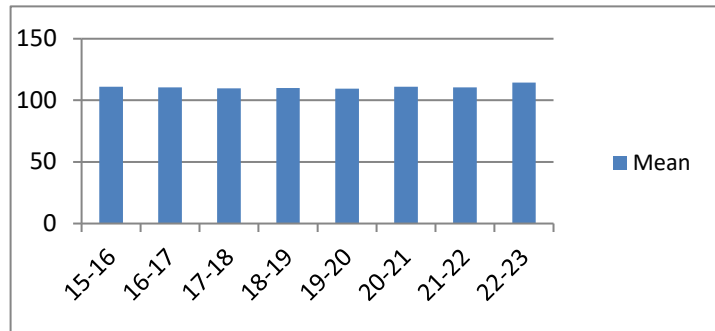
### Average Incarceration Length - Felony Class B - All Offenders

| Fiscal Year | Mean   | Median | Standard Deviation | N     |
|-------------|--------|--------|--------------------|-------|
| 15-16       | 118.97 | 108.00 | 37.95              | 1,847 |
| 16-17       | 122.73 | 114.00 | 40.36              | 1,966 |
| 17-18       | 118.65 | 108.00 | 36.84              | 2,564 |
| 18-19       | 119.17 | 108.00 | 38.92              | 2,721 |
| 19-20       | 122.36 | 108.00 | 44.31              | 1,806 |
| 20-21       | 121.39 | 120.00 | 37.88              | 1,752 |
| 21-22       | 119.64 | 108.00 | 35.27              | 2,677 |
| 22-23       | 126.38 | 120.00 | 44.41              | 2,526 |



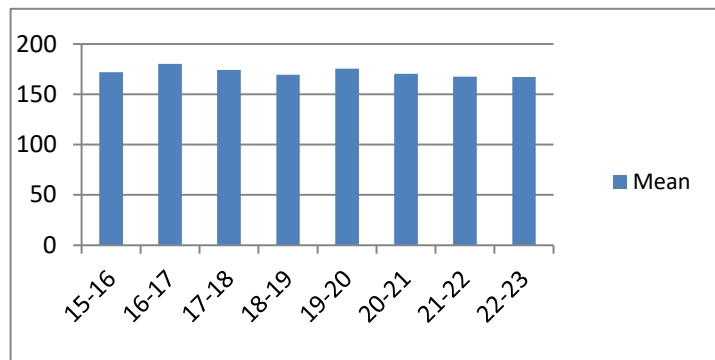
### Average Incarceration Length - Felony Class B - Standard Offenders

| Fiscal Year | Mean   | Median | Standard Deviation | N     |
|-------------|--------|--------|--------------------|-------|
| 15-16       | 110.92 | 96.00  | 18.50              | 1,518 |
| 16-17       | 110.57 | 96.00  | 18.62              | 1,616 |
| 17-18       | 109.81 | 96.00  | 19.12              | 2,165 |
| 18-19       | 109.97 | 96.00  | 22.20              | 2,287 |
| 19-20       | 109.43 | 96.00  | 19.61              | 1,446 |
| 20-21       | 111.15 | 108.00 | 18.87              | 1,457 |
| 21-22       | 110.47 | 96.00  | 19.23              | 2,207 |
| 22-23       | 114.50 | 108.00 | 26.24              | 2,008 |



### Average Incarceration Length - Felony Class B - Multiple Offenders

| Fiscal Year | Mean   | Median | Standard Deviation | N   |
|-------------|--------|--------|--------------------|-----|
| 15-16       | 172.13 | 180.00 | 33.42              | 215 |
| 16-17       | 180.25 | 180.00 | 41.84              | 287 |
| 17-18       | 174.11 | 168.00 | 38.06              | 275 |
| 18-19       | 169.47 | 156.00 | 39.71              | 318 |
| 19-20       | 175.38 | 180.00 | 38.04              | 244 |
| 20-21       | 170.31 | 162.00 | 38.27              | 211 |
| 21-22       | 167.41 | 168.00 | 30.86              | 356 |
| 22-23       | 167.25 | 157.50 | 37.29              | 400 |

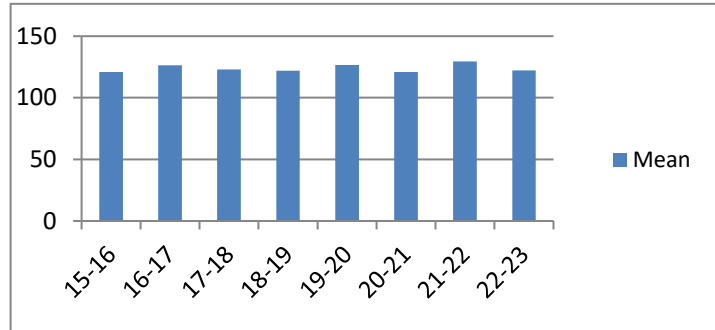


## Average Incarceration Lengths in Months by Felony Class and Offense

Note: Column N indicates the number of felony convictions. Individual offenders can have multiple convictions. Incarceration includes life without parole and death sentences. Probation includes sentences to community corrections.

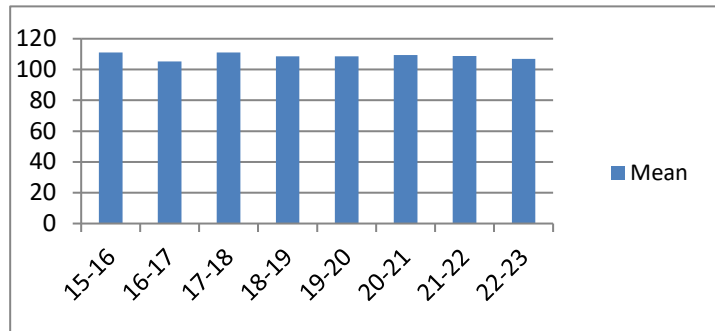
### Average Incarceration Length - Schedule II Cocaine - All Offenders

| Fiscal Year | Mean   | Median | Standard Deviation | N   |
|-------------|--------|--------|--------------------|-----|
| 15-16       | 120.82 | 120.00 | 35.16              | 211 |
| 16-17       | 126.30 | 114.00 | 45.74              | 188 |
| 17-18       | 122.86 | 114.00 | 39.51              | 245 |
| 18-19       | 121.91 | 108.00 | 40.40              | 249 |
| 19-20       | 126.67 | 120.00 | 46.83              | 144 |
| 20-21       | 120.81 | 120.00 | 36.48              | 74  |
| 21-22       | 129.50 | 120.00 | 43.83              | 113 |
| 22-23       | 122.13 | 96.00  | 40.80              | 107 |



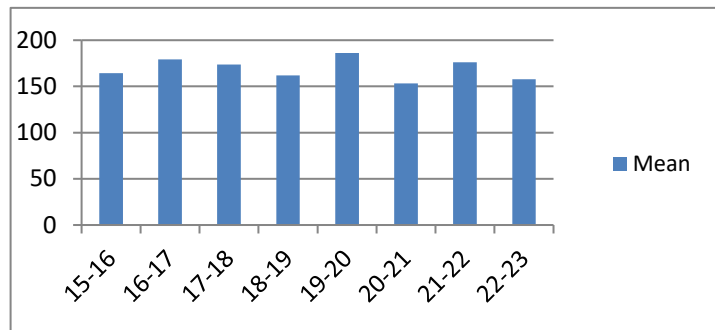
### Average Incarceration Length - Schedule II Cocaine - Standard Offenders

| Fiscal Year | Mean   | Median | Standard Deviation | N   |
|-------------|--------|--------|--------------------|-----|
| 15-16       | 111.09 | 108.00 | 18.76              | 175 |
| 16-17       | 105.24 | 96.00  | 15.40              | 137 |
| 17-18       | 111.12 | 108.00 | 21.24              | 200 |
| 18-19       | 108.64 | 96.00  | 17.89              | 201 |
| 19-20       | 108.64 | 96.00  | 19.05              | 112 |
| 20-21       | 109.35 | 102.00 | 14.75              | 62  |
| 21-22       | 108.74 | 96.00  | 19.47              | 81  |
| 22-23       | 106.84 | 96.00  | 19.08              | 83  |



### Average Incarceration Length - Schedule II Cocaine - Multiple Offenders

| Fiscal Year | Mean   | Median | Standard Deviation | N  |
|-------------|--------|--------|--------------------|----|
| 15-16       | 164.40 | 168.00 | 36.36              | 30 |
| 16-17       | 179.22 | 180.00 | 41.21              | 46 |
| 17-18       | 173.70 | 156.00 | 42.10              | 40 |
| 18-19       | 162.00 | 150.00 | 23.13              | 38 |
| 19-20       | 186.00 | 198.00 | 43.63              | 24 |
| 20-21       | 153.33 | 144.00 | 26.68              | 9  |
| 21-22       | 176.07 | 174.00 | 33.80              | 29 |
| 22-23       | 157.80 | 144.00 | 25.61              | 20 |

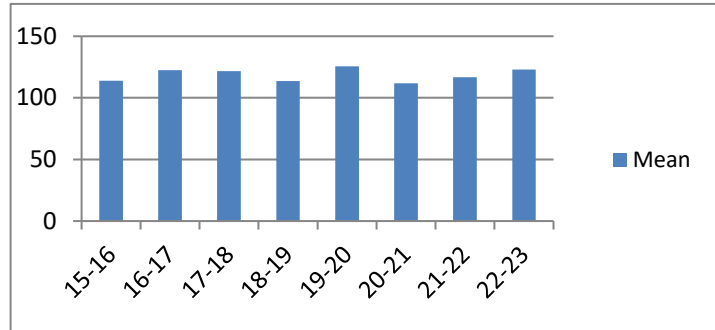


## Average Incarceration Lengths in Months by Felony Class and Offense

Note: Column N indicates the number of felony convictions. Individual offenders can have multiple convictions. Incarceration includes life without parole and death sentences. Probation includes sentences to community corrections.

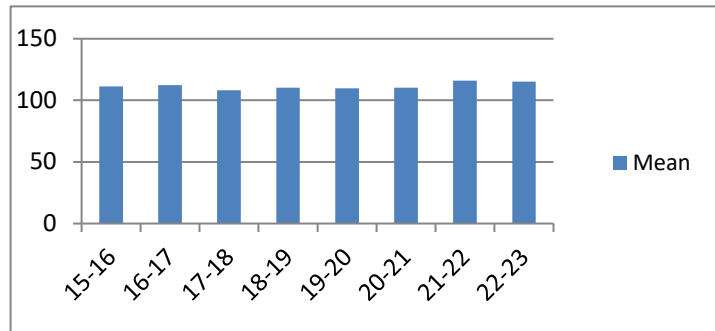
**Average Incarceration Length -  
Aggravated Robbery - All Offenders**

| Fiscal Year | Mean   | Median | Standard Deviation | N   |
|-------------|--------|--------|--------------------|-----|
| 15-16       | 113.88 | 96.00  | 32.42              | 396 |
| 16-17       | 122.34 | 108.00 | 44.29              | 305 |
| 17-18       | 121.70 | 96.00  | 45.48              | 456 |
| 18-19       | 113.52 | 96.00  | 32.71              | 342 |
| 19-20       | 125.51 | 96.00  | 61.08              | 227 |
| 20-21       | 111.78 | 96.00  | 30.89              | 219 |
| 21-22       | 116.80 | 96.00  | 29.75              | 330 |
| 22-23       | 123.03 | 120.00 | 38.96              | 227 |



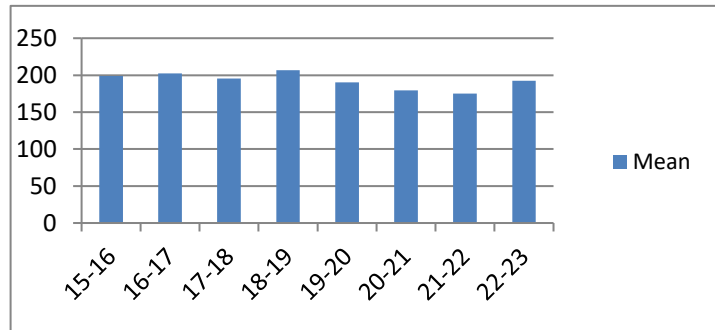
**Average Incarceration Length -  
Aggravated Robbery - Standard Offenders**

| Fiscal Year | Mean   | Median | Standard Deviation | N   |
|-------------|--------|--------|--------------------|-----|
| 15-16       | 111.22 | 102.00 | 20.35              | 331 |
| 16-17       | 112.34 | 108.00 | 17.96              | 250 |
| 17-18       | 108.17 | 96.00  | 17.45              | 323 |
| 18-19       | 110.29 | 96.00  | 22.10              | 286 |
| 19-20       | 109.68 | 96.00  | 17.89              | 156 |
| 20-21       | 110.32 | 96.00  | 19.91              | 186 |
| 21-22       | 116.09 | 108.00 | 21.99              | 253 |
| 22-23       | 115.08 | 120.00 | 19.61              | 173 |



**Average Incarceration Length -  
Aggravated Robbery - Multiple Offenders**

| Fiscal Year | Mean   | Median | Standard Deviation | N  |
|-------------|--------|--------|--------------------|----|
| 15-16       | 199.00 | 201.00 | 22.57              | 18 |
| 16-17       | 202.38 | 210.00 | 34.89              | 26 |
| 17-18       | 195.29 | 192.00 | 24.02              | 62 |
| 18-19       | 206.53 | 216.00 | 26.41              | 19 |
| 19-20       | 190.18 | 192.00 | 19.93              | 33 |
| 20-21       | 179.33 | 168.00 | 45.84              | 9  |
| 21-22       | 174.92 | 168.00 | 20.69              | 26 |
| 22-23       | 192.22 | 180.00 | 25.03              | 27 |

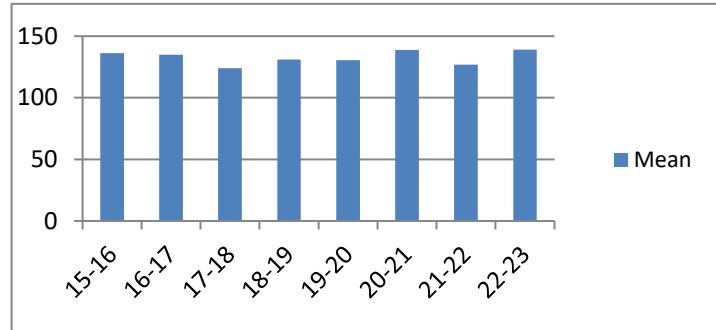


## Average Incarceration Lengths in Months by Felony Class and Offense

Note: Column N indicates the number of felony convictions. Individual offenders can have multiple convictions. Incarceration includes life without parole and death sentences. Probation includes sentences to community corrections.

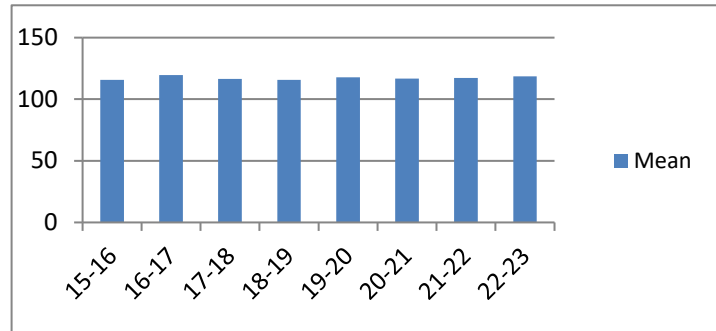
### Average Incarceration Length - Aggravated Sexual Battery - All Offenders

| Fiscal Year | Mean   | Median | Standard Deviation | N   |
|-------------|--------|--------|--------------------|-----|
| 15-16       | 136.14 | 120.00 | 42.73              | 91  |
| 16-17       | 135.00 | 120.00 | 42.95              | 165 |
| 17-18       | 124.06 | 120.00 | 32.86              | 216 |
| 18-19       | 131.00 | 120.00 | 48.06              | 220 |
| 19-20       | 130.64 | 120.00 | 42.63              | 111 |
| 20-21       | 138.93 | 120.00 | 41.64              | 108 |
| 21-22       | 126.76 | 120.00 | 33.64              | 177 |
| 22-23       | 139.15 | 120.00 | 60.51              | 185 |



### Average Incarceration Length - Aggravated Sexual Battery - Standard Offenders

| Fiscal Year | Mean   | Median | Standard Deviation | N   |
|-------------|--------|--------|--------------------|-----|
| 15-16       | 115.81 | 120.00 | 17.53              | 63  |
| 16-17       | 119.57 | 120.00 | 19.26              | 138 |
| 17-18       | 116.50 | 120.00 | 18.15              | 199 |
| 18-19       | 115.64 | 120.00 | 18.27              | 187 |
| 19-20       | 117.70 | 120.00 | 18.98              | 94  |
| 20-21       | 116.80 | 120.00 | 19.66              | 75  |
| 21-22       | 117.24 | 120.00 | 20.02              | 150 |
| 22-23       | 118.45 | 120.00 | 17.50              | 155 |



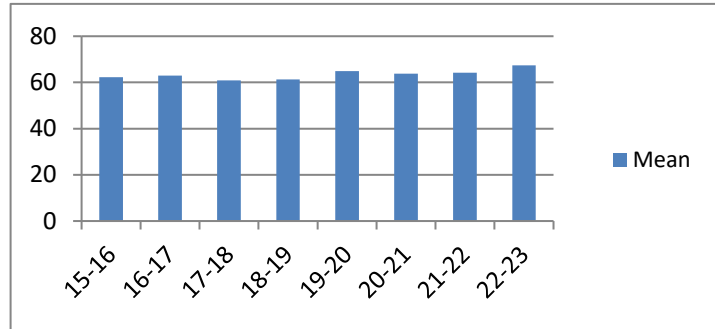
The table for multiple offenders was not included due to low occurrence frequencies.

## Average Incarceration Lengths in Months by Felony Class and Offense

Note: Column N indicates the number of felony convictions. Individual offenders can have multiple convictions. Incarceration includes life without parole and death sentences. Probation includes sentences to community corrections.

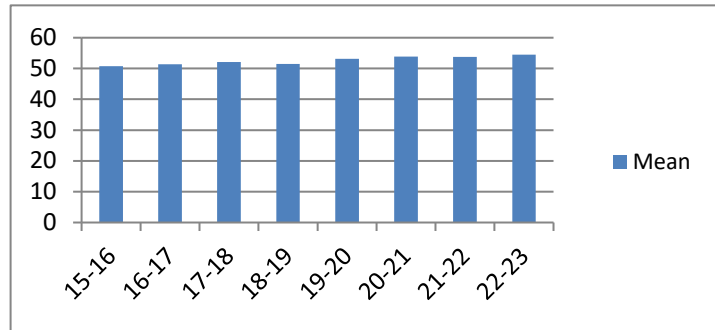
**Average Incarceration Length - Class C -  
All Offenders**

| Fiscal Year | Mean  | Median | Standard Deviation | N     |
|-------------|-------|--------|--------------------|-------|
| 15-16       | 62.20 | 60.00  | 29.07              | 5,108 |
| 16-17       | 62.96 | 60.00  | 29.63              | 4,974 |
| 17-18       | 60.95 | 60.00  | 27.74              | 6,029 |
| 18-19       | 61.36 | 60.00  | 28.26              | 6,125 |
| 19-20       | 64.95 | 60.00  | 31.40              | 3,597 |
| 20-21       | 63.77 | 60.00  | 28.65              | 2,941 |
| 21-22       | 64.26 | 60.00  | 29.32              | 4,043 |
| 22-23       | 67.43 | 60.00  | 31.74              | 3,811 |



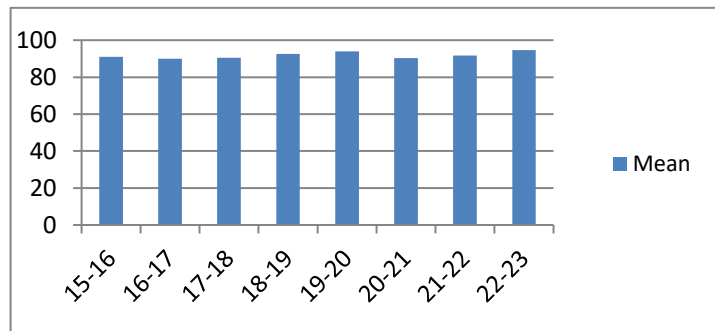
**Average Incarceration Length - Class C -  
Standard Offenders**

| Fiscal Year | Mean  | Median | Standard Deviation | N     |
|-------------|-------|--------|--------------------|-------|
| 15-16       | 50.77 | 48.00  | 16.63              | 3,906 |
| 16-17       | 51.42 | 48.00  | 16.42              | 3,805 |
| 17-18       | 52.06 | 48.00  | 16.52              | 4,922 |
| 18-19       | 51.51 | 48.00  | 16.76              | 4,875 |
| 19-20       | 53.19 | 48.00  | 19.57              | 2,741 |
| 20-21       | 53.90 | 48.00  | 17.65              | 2,283 |
| 21-22       | 53.82 | 48.00  | 17.74              | 3,125 |
| 22-23       | 54.45 | 48.00  | 18.72              | 2,782 |



**Average Incarceration Length - Class C - Multiple  
Offenders**

| Fiscal Year | Mean  | Median | Standard Deviation | N     |
|-------------|-------|--------|--------------------|-------|
| 15-16       | 90.94 | 84.00  | 21.06              | 939   |
| 16-17       | 89.93 | 84.00  | 20.01              | 888   |
| 17-18       | 90.48 | 96.00  | 20.28              | 863   |
| 18-19       | 92.58 | 96.00  | 20.66              | 1,005 |
| 19-20       | 93.97 | 96.00  | 20.52              | 630   |
| 20-21       | 90.24 | 84.00  | 22.34              | 505   |
| 21-22       | 91.64 | 96.00  | 22.44              | 703   |
| 22-23       | 94.62 | 96.00  | 22.55              | 755   |

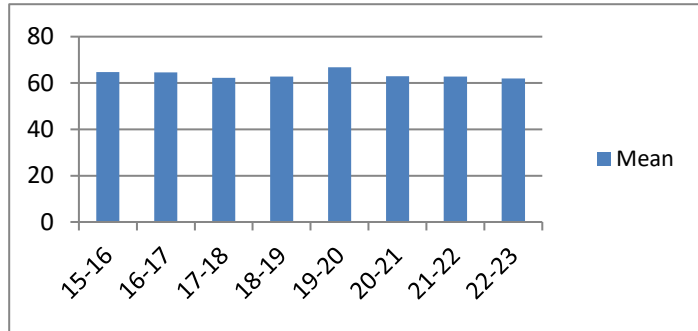


## Average Incarceration Lengths in Months by Felony Class and Offense

Note: Column N indicates the number of felony convictions. Individual offenders can have multiple convictions. Incarceration includes life without parole and death sentences. Probation includes sentences to community corrections.

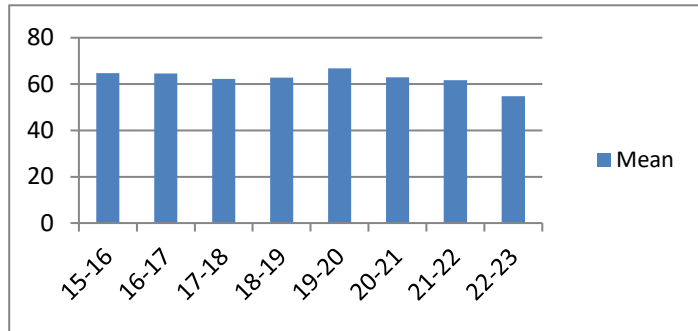
### Average Incarceration Length - Aggravated Burglary - All Offenders

| Fiscal Year | Mean  | Median | Standard Deviation | N     |
|-------------|-------|--------|--------------------|-------|
| 15-16       | 64.75 | 60.00  | 31.71              | 1,387 |
| 16-17       | 64.51 | 60.00  | 31.61              | 1,061 |
| 17-18       | 62.24 | 54.00  | 30.68              | 1,133 |
| 18-19       | 62.79 | 48.00  | 31.54              | 1,034 |
| 19-20       | 66.84 | 48.00  | 37.11              | 536   |
| 20-21       | 62.90 | 54.00  | 31.47              | 387   |
| 21-22       | 62.82 | 48.00  | 31.79              | 474   |
| 22-23       | 61.98 | 48.00  | 28.06              | 655   |



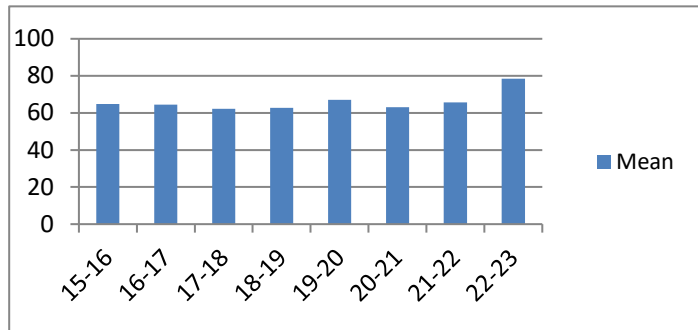
### Average Incarceration Length - Aggravated Burglary - Standard Offenders

| Fiscal Year | Mean  | Median | Standard Deviation | N     |
|-------------|-------|--------|--------------------|-------|
| 15-16       | 64.75 | 60.00  | 31.71              | 1,387 |
| 16-17       | 64.51 | 60.00  | 31.61              | 1,061 |
| 17-18       | 62.24 | 54.00  | 30.68              | 1,133 |
| 18-19       | 62.79 | 48.00  | 31.54              | 1,034 |
| 19-20       | 66.83 | 48.00  | 37.15              | 535   |
| 20-21       | 62.94 | 57.00  | 31.50              | 386   |
| 21-22       | 61.66 | 48.00  | 30.88              | 459   |
| 22-23       | 54.79 | 48.00  | 22.09              | 546   |



### Average Incarceration Length - Aggravated Burglary - Multiple Offenders

| Fiscal Year | Mean  | Median | Standard Deviation | N     |
|-------------|-------|--------|--------------------|-------|
| 15-16       | 64.75 | 60.00  | 31.74              | 1,384 |
| 16-17       | 64.51 | 60.00  | 31.61              | 1,061 |
| 17-18       | 62.27 | 54.00  | 30.70              | 1,131 |
| 18-19       | 62.81 | 48.00  | 31.56              | 1,032 |
| 19-20       | 67.13 | 48.00  | 37.40              | 524   |
| 20-21       | 63.14 | 60.00  | 31.62              | 381   |
| 21-22       | 65.71 | 60.00  | 33.20              | 374   |
| 22-23       | 78.45 | 72.00  | 32.51              | 210   |

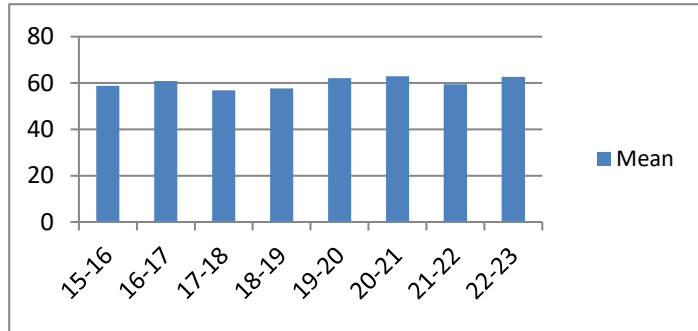


## Average Incarceration Lengths in Months by Felony Class and Offense

Note: Column N indicates the number of felony convictions. Individual offenders can have multiple convictions. Incarceration includes life without parole and death sentences. Probation includes sentences to community corrections.

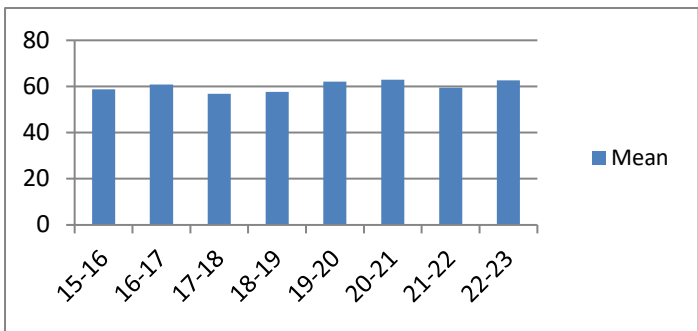
### Average Incarceration Length - Aggravated Assault - All Offenders

| Fiscal Year | Mean  | Median | Standard Deviation | N     |
|-------------|-------|--------|--------------------|-------|
| 15-16       | 58.70 | 48.00  | 28.49              | 1,019 |
| 16-17       | 60.88 | 48.00  | 27.66              | 981   |
| 17-18       | 56.84 | 48.00  | 25.84              | 1,245 |
| 18-19       | 57.67 | 48.00  | 25.58              | 1,343 |
| 19-20       | 62.08 | 60.00  | 29.51              | 854   |
| 20-21       | 62.91 | 60.00  | 29.07              | 730   |
| 21-22       | 59.40 | 48.00  | 26.19              | 1,001 |
| 22-23       | 62.65 | 60.00  | 29.90              | 927   |



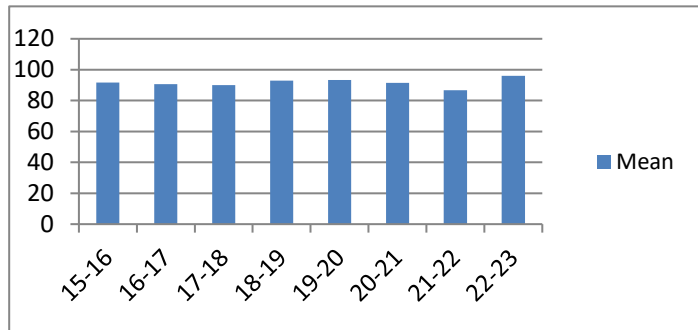
### Average Incarceration Length - Aggravated Assault - Standard Offenders

| Fiscal Year | Mean  | Median | Standard Deviation | N     |
|-------------|-------|--------|--------------------|-------|
| 15-16       | 58.70 | 48.00  | 28.49              | 1,019 |
| 16-17       | 60.88 | 48.00  | 27.66              | 981   |
| 17-18       | 56.84 | 48.00  | 25.84              | 1,245 |
| 18-19       | 57.67 | 48.00  | 25.58              | 1,343 |
| 19-20       | 62.08 | 60.00  | 29.51              | 854   |
| 20-21       | 62.91 | 60.00  | 29.07              | 730   |
| 21-22       | 59.40 | 48.00  | 26.19              | 1,001 |
| 22-23       | 62.65 | 60.00  | 29.90              | 927   |



### Average Incarceration Length - Aggravated Assault - Multiple Offenders

| Fiscal Year | Mean  | Median | Standard Deviation | N   |
|-------------|-------|--------|--------------------|-----|
| 15-16       | 91.59 | 84.00  | 21.46              | 156 |
| 16-17       | 90.68 | 96.00  | 19.66              | 159 |
| 17-18       | 90.01 | 84.00  | 20.43              | 170 |
| 18-19       | 92.89 | 96.00  | 22.56              | 227 |
| 19-20       | 93.38 | 96.00  | 20.26              | 128 |
| 20-21       | 91.46 | 96.00  | 23.19              | 140 |
| 21-22       | 86.61 | 84.00  | 19.00              | 166 |
| 22-23       | 95.93 | 96.00  | 25.28              | 192 |



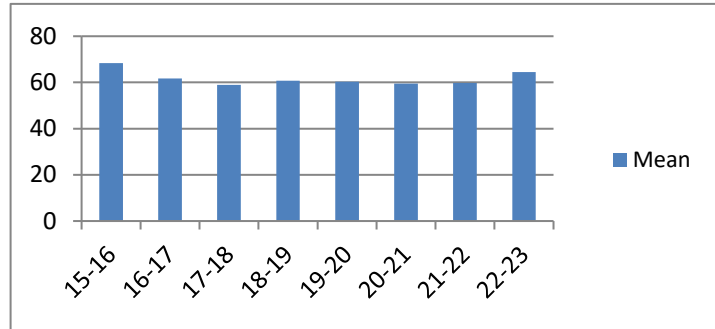


## Average Incarceration Lengths in Months by Felony Class and Offense

Note: Column N indicates the number of felony convictions. Individual offenders can have multiple convictions. Incarceration includes life without parole and death sentences. Probation includes sentences to community corrections.

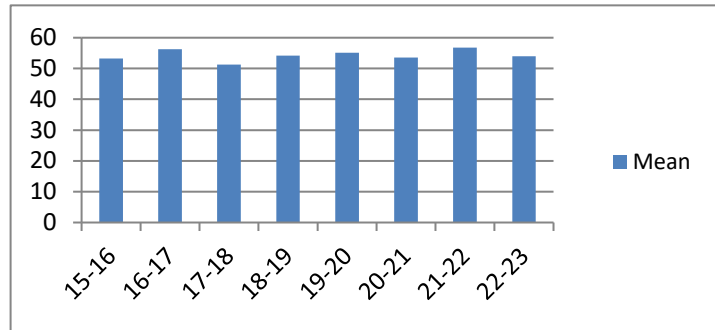
**Average Incarceration Length - Schedule II Cocaine  
< 1/2 Gram - All Offenders**

| Fiscal Year | Mean  | Median | Standard Deviation | N   |
|-------------|-------|--------|--------------------|-----|
| 15-16       | 68.40 | 72.00  | 33.61              | 183 |
| 16-17       | 61.76 | 60.00  | 25.38              | 153 |
| 17-18       | 59.00 | 48.00  | 23.85              | 141 |
| 18-19       | 60.81 | 60.00  | 26.20              | 132 |
| 19-20       | 60.32 | 60.00  | 20.81              | 76  |
| 20-21       | 59.48 | 60.00  | 21.31              | 69  |
| 21-22       | 59.79 | 60.00  | 17.34              | 57  |
| 22-23       | 64.50 | 72.00  | 32.10              | 52  |



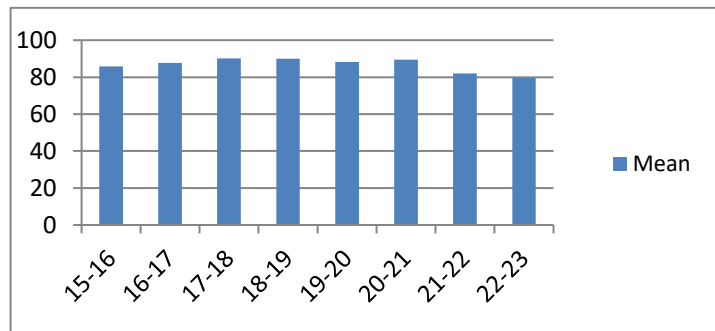
**Average Incarceration Length - Schedule II Cocaine  
< 1/2 Gram - Standard Offenders**

| Fiscal Year | Mean  | Median | Standard Deviation | N   |
|-------------|-------|--------|--------------------|-----|
| 15-16       | 53.20 | 48.00  | 17.47              | 127 |
| 16-17       | 56.23 | 54.00  | 20.88              | 129 |
| 17-18       | 51.25 | 48.00  | 15.37              | 115 |
| 18-19       | 54.14 | 48.00  | 15.47              | 113 |
| 19-20       | 55.11 | 54.00  | 15.55              | 65  |
| 20-21       | 53.57 | 48.00  | 15.64              | 56  |
| 21-22       | 56.82 | 60.00  | 15.45              | 49  |
| 22-23       | 54.00 | 48.00  | 17.18              | 41  |



**Average Incarceration Length - Schedule II Cocaine  
< 1/2 Gram - Multiple Offenders**

| Fiscal Year | Mean  | Median | Standard Deviation | N  |
|-------------|-------|--------|--------------------|----|
| 15-16       | 85.80 | 72.00  | 21.32              | 40 |
| 16-17       | 87.65 | 84.00  | 19.96              | 23 |
| 17-18       | 90.05 | 78.50  | 23.60              | 22 |
| 18-19       | 90.00 | 84.00  | 20.78              | 12 |
| 19-20       | 88.20 | 87.00  | 20.79              | 10 |
| 20-21       | 89.45 | 84.00  | 23.62              | 11 |
| 21-22       | 82.00 | 72.00  | 19.22              | 6  |
| 22-23       | 79.50 | 72.00  | 14.25              | 8  |

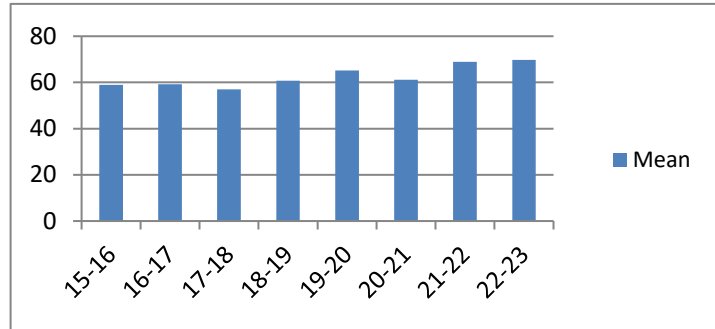


## Average Incarceration Lengths in Months by Felony Class and Offense

Note: Column N indicates the number of felony convictions. Individual offenders can have multiple convictions. Incarceration includes life without parole and death sentences. Probation includes sentences to community corrections.

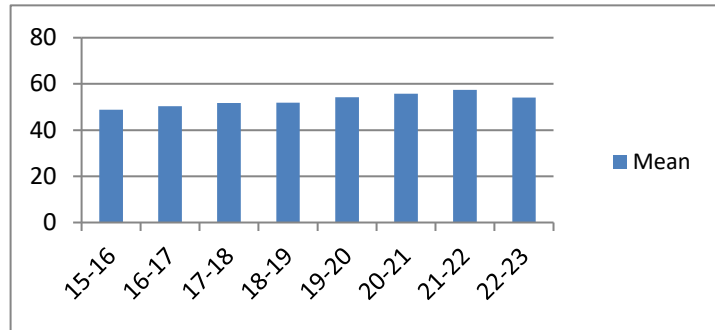
### Average Incarceration Length - Schedule II Drugs: Max \$100,000 Fine - All Offenders

| Fiscal Year | Mean  | Median | Standard Deviation | N   |
|-------------|-------|--------|--------------------|-----|
| 15-16       | 58.99 | 48.00  | 25.44              | 508 |
| 16-17       | 59.22 | 48.00  | 26.81              | 497 |
| 17-18       | 57.06 | 48.00  | 22.42              | 472 |
| 18-19       | 60.80 | 54.00  | 27.68              | 422 |
| 19-20       | 65.12 | 72.00  | 26.08              | 177 |
| 20-21       | 61.11 | 60.00  | 23.31              | 151 |
| 21-22       | 68.90 | 72.00  | 31.15              | 257 |
| 22-23       | 69.72 | 72.00  | 34.82              | 309 |



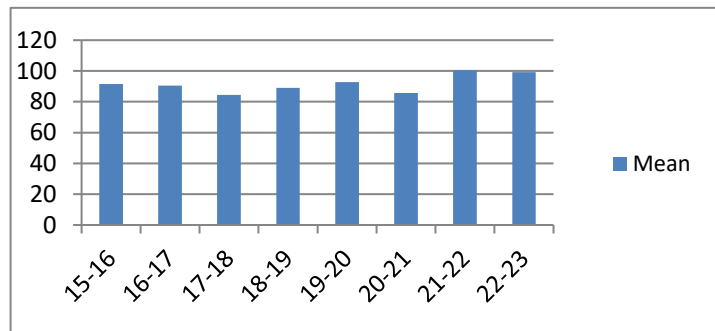
### Average Incarceration Length - Schedule II Drugs: Max \$100,000 Fine - Standard Offenders

| Fiscal Year | Mean  | Median | Standard Deviation | N   |
|-------------|-------|--------|--------------------|-----|
| 15-16       | 48.76 | 48.00  | 13.66              | 394 |
| 16-17       | 50.32 | 48.00  | 16.06              | 406 |
| 17-18       | 51.73 | 48.00  | 15.95              | 401 |
| 18-19       | 51.91 | 48.00  | 17.38              | 344 |
| 19-20       | 54.18 | 48.00  | 16.49              | 131 |
| 20-21       | 55.69 | 60.00  | 17.66              | 128 |
| 21-22       | 57.40 | 60.00  | 18.20              | 198 |
| 22-23       | 54.16 | 48.00  | 16.11              | 225 |



### Average Incarceration Length - Schedule II Drugs: Max \$100,000 Fine - Multiple Offenders

| Fiscal Year | Mean   | Median | Standard Deviation | N   |
|-------------|--------|--------|--------------------|-----|
| 15-16       | 91.48  | 84.00  | 21.10              | 106 |
| 16-17       | 90.56  | 96.00  | 22.26              | 75  |
| 17-18       | 84.36  | 72.00  | 25.78              | 66  |
| 18-19       | 89.14  | 90.00  | 19.33              | 63  |
| 19-20       | 92.86  | 96.00  | 19.31              | 42  |
| 20-21       | 85.71  | 72.00  | 19.82              | 21  |
| 21-22       | 100.53 | 96.00  | 29.91              | 49  |
| 22-23       | 99.27  | 96.00  | 22.43              | 66  |

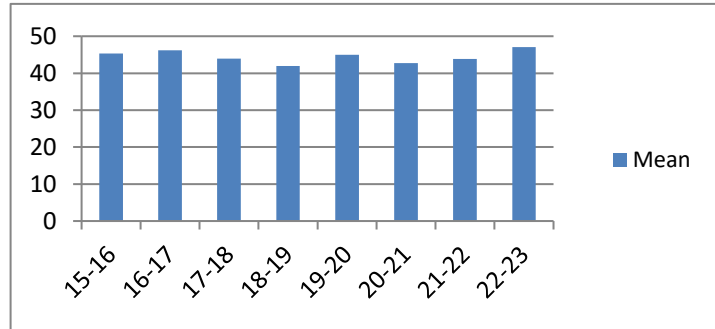


## Average Incarceration Lengths in Months by Felony Class and Offense

Note: Column N indicates the number of felony convictions. Individual offenders can have multiple convictions. Incarceration includes life without parole and death sentences. Probation includes sentences to community corrections.

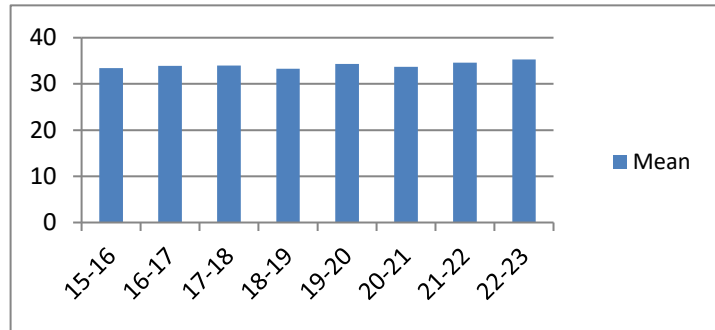
**Average Incarceration Length - Class D -  
All Offenders**

| Fiscal Year | Mean  | Median | Standard Deviation | N     |
|-------------|-------|--------|--------------------|-------|
| 15-16       | 45.36 | 36.00  | 26.49              | 5,141 |
| 16-17       | 46.18 | 36.00  | 26.89              | 4,235 |
| 17-18       | 43.92 | 36.00  | 25.23              | 4,236 |
| 18-19       | 41.99 | 36.00  | 23.75              | 3,997 |
| 19-20       | 44.98 | 36.00  | 26.43              | 2,606 |
| 20-21       | 42.76 | 36.00  | 24.23              | 2,213 |
| 21-22       | 43.86 | 36.00  | 24.79              | 2,934 |
| 22-23       | 47.07 | 36.00  | 28.51              | 2,669 |



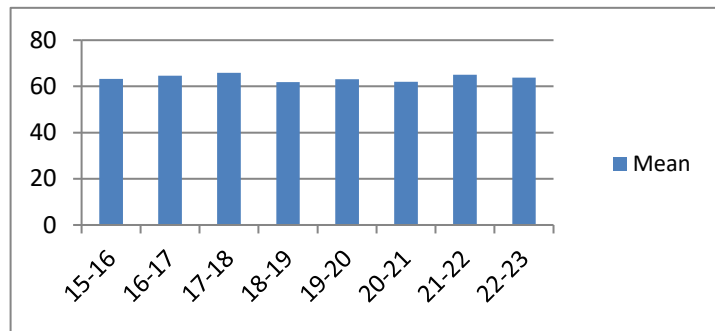
**Average Incarceration Length - Class D - Standard  
Offenders**

| Fiscal Year | Mean  | Median | Standard Deviation | N     |
|-------------|-------|--------|--------------------|-------|
| 15-16       | 33.39 | 36.00  | 10.19              | 3,683 |
| 16-17       | 33.94 | 36.00  | 11.02              | 3,024 |
| 17-18       | 33.96 | 36.00  | 10.70              | 3,257 |
| 18-19       | 33.26 | 36.00  | 10.41              | 3,126 |
| 19-20       | 34.35 | 36.00  | 11.83              | 1,946 |
| 20-21       | 33.70 | 36.00  | 11.55              | 1,696 |
| 21-22       | 34.57 | 36.00  | 12.14              | 2,250 |
| 22-23       | 35.27 | 36.00  | 15.62              | 1,907 |



**Average Incarceration Length - Class D -  
Multiple Offenders**

| Fiscal Year | Mean  | Median | Standard Deviation | N     |
|-------------|-------|--------|--------------------|-------|
| 15-16       | 63.23 | 60.00  | 18.10              | 1,098 |
| 16-17       | 64.57 | 60.00  | 18.73              | 920   |
| 17-18       | 65.82 | 60.00  | 19.16              | 731   |
| 18-19       | 61.83 | 60.00  | 18.52              | 672   |
| 19-20       | 63.08 | 60.00  | 18.37              | 475   |
| 20-21       | 62.05 | 60.00  | 18.65              | 399   |
| 21-22       | 64.99 | 60.00  | 20.88              | 524   |
| 22-23       | 63.86 | 60.00  | 20.44              | 569   |

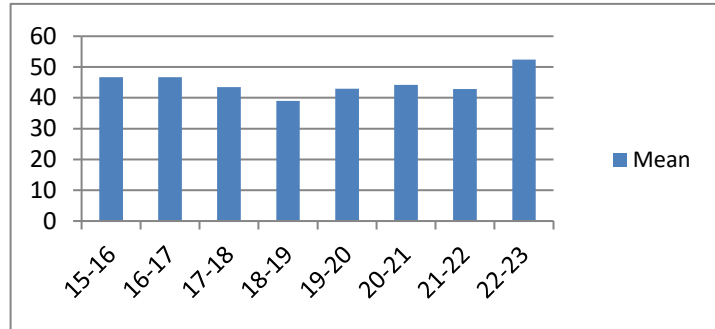


## Average Incarceration Lengths in Months by Felony Class and Offense

Note: Column N indicates the number of felony convictions. Individual offenders can have multiple convictions. Incarceration includes life without parole and death sentences. Probation includes sentences to community corrections.

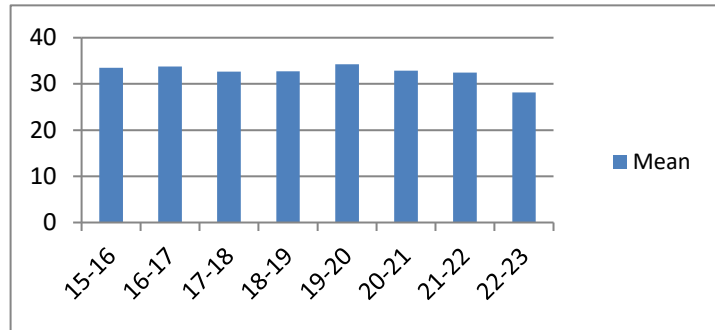
**Average Incarceration Length - Theft: \$1,000 to \$10,000 - All Offenders**

| Fiscal Year | Mean  | Median | Standard Deviation | N     |
|-------------|-------|--------|--------------------|-------|
| 15-16       | 46.73 | 36.00  | 27.62              | 1,826 |
| 16-17       | 46.72 | 36.00  | 26.75              | 1,300 |
| 17-18       | 43.49 | 36.00  | 25.83              | 694   |
| 18-19       | 39.00 | 36.00  | 20.67              | 281   |
| 19-20       | 42.91 | 36.00  | 23.63              | 160   |
| 20-21       | 44.18 | 36.00  | 25.66              | 77    |
| 21-22       | 42.85 | 36.00  | 25.07              | 98    |
| 22-23       | 52.45 | 48.00  | 38.35              | 11    |



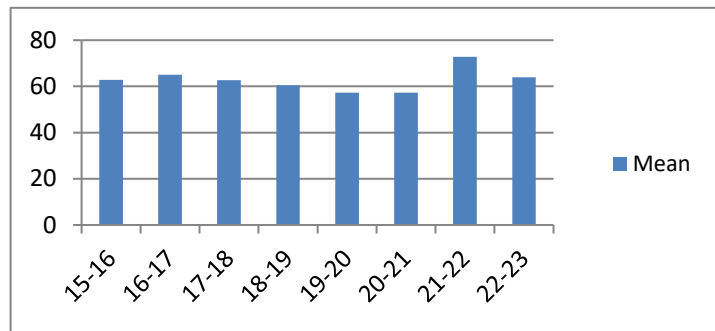
**Average Incarceration Length - Theft: \$1,000 to \$10,000 - Standard Offenders**

| Fiscal Year | Mean  | Median | Standard Deviation | N     |
|-------------|-------|--------|--------------------|-------|
| 15-16       | 33.49 | 36.00  | 10.28              | 1,242 |
| 16-17       | 33.74 | 36.00  | 10.84              | 899   |
| 17-18       | 32.69 | 24.02  | 11.27              | 514   |
| 18-19       | 32.71 | 24.00  | 11.27              | 228   |
| 19-20       | 34.22 | 36.00  | 10.38              | 120   |
| 20-21       | 32.88 | 27.00  | 10.05              | 52    |
| 21-22       | 32.45 | 25.02  | 10.18              | 78    |
| 22-23       | 28.17 | 24.00  | 9.72               | 6     |



**Average Incarceration Length - Theft: \$1,000 to \$10,000 - Multiple Offenders**

| Fiscal Year | Mean  | Median | Standard Deviation | N   |
|-------------|-------|--------|--------------------|-----|
| 15-16       | 62.77 | 60.00  | 18.81              | 455 |
| 16-17       | 65.03 | 60.00  | 19.21              | 308 |
| 17-18       | 62.73 | 48.00  | 20.89              | 132 |
| 18-19       | 60.53 | 48.00  | 19.48              | 45  |
| 19-20       | 57.29 | 48.00  | 18.25              | 31  |
| 20-21       | 57.27 | 48.00  | 14.78              | 22  |
| 21-22       | 72.86 | 72.00  | 18.51              | 14  |
| 22-23       | 64.00 | 48.00  | 27.71              | 3   |

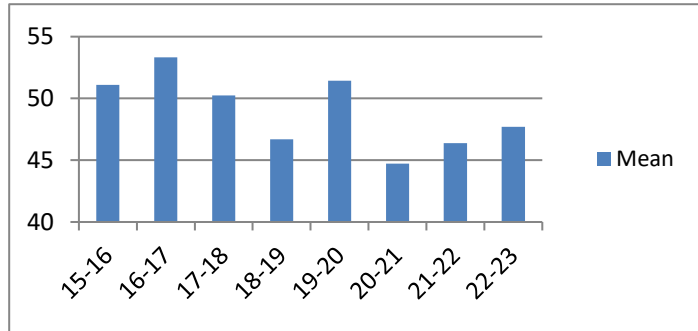


## Average Incarceration Lengths in Months by Felony Class and Offense

Note: Column N indicates the number of felony convictions. Individual offenders can have multiple convictions. Incarceration includes life without parole and death sentences. Probation includes sentences to community corrections.

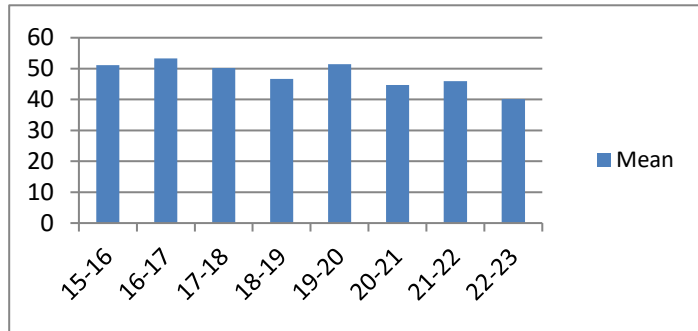
### Average Incarceration Length - Burglary Other Than Habitation - All Offenders

| Fiscal Year | Mean  | Median | Standard Deviation | N     |
|-------------|-------|--------|--------------------|-------|
| 15-16       | 51.10 | 48.00  | 30.01              | 693   |
| 16-17       | 53.33 | 48.00  | 32.31              | 662   |
| 17-18       | 50.24 | 48.00  | 30.01              | 775   |
| 18-19       | 46.70 | 36.00  | 29.45              | 799   |
| 19-20       | 51.43 | 48.00  | 31.19              | 488   |
| 20-21       | 44.73 | 36.00  | 26.22              | 496   |
| 21-22       | 46.38 | 42.00  | 24.81              | 699   |
| 22-23       | 47.70 | 39.02  | 27.38              | 1,106 |



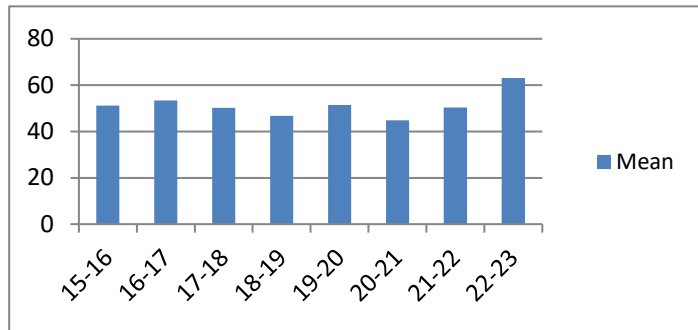
### Average Incarceration Length - Burglary Other Than Habitation - Standard Offenders

| Fiscal Year | Mean  | Median | Standard Deviation | N   |
|-------------|-------|--------|--------------------|-----|
| 15-16       | 51.10 | 48.00  | 30.01              | 693 |
| 16-17       | 53.33 | 48.00  | 32.31              | 662 |
| 17-18       | 50.24 | 48.00  | 30.01              | 775 |
| 18-19       | 46.70 | 36.00  | 29.45              | 799 |
| 19-20       | 51.43 | 48.00  | 31.19              | 488 |
| 20-21       | 44.73 | 36.00  | 26.22              | 496 |
| 21-22       | 45.90 | 36.00  | 25.02              | 669 |
| 22-23       | 40.18 | 36.00  | 21.23              | 882 |



### Average Incarceration Length - Burglary Other Than Habitation - Multiple Offenders

| Fiscal Year | Mean  | Median | Standard Deviation | N   |
|-------------|-------|--------|--------------------|-----|
| 15-16       | 51.10 | 48.00  | 30.01              | 693 |
| 16-17       | 53.33 | 48.00  | 32.31              | 662 |
| 17-18       | 50.24 | 48.00  | 30.01              | 775 |
| 18-19       | 46.70 | 36.00  | 29.45              | 799 |
| 19-20       | 51.46 | 48.00  | 31.21              | 487 |
| 20-21       | 44.84 | 36.00  | 26.27              | 493 |
| 21-22       | 50.40 | 48.00  | 27.23              | 503 |
| 22-23       | 63.02 | 60.00  | 28.73              | 328 |

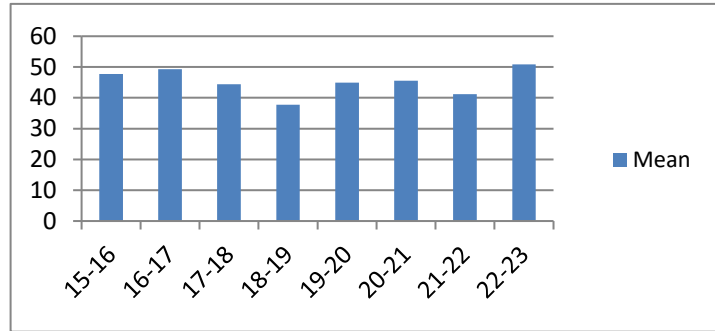


## Average Incarceration Lengths in Months by Felony Class and Offense

Note: Column N indicates the number of felony convictions. Individual offenders can have multiple convictions. Incarceration includes life without parole and death sentences. Probation includes sentences to community corrections.

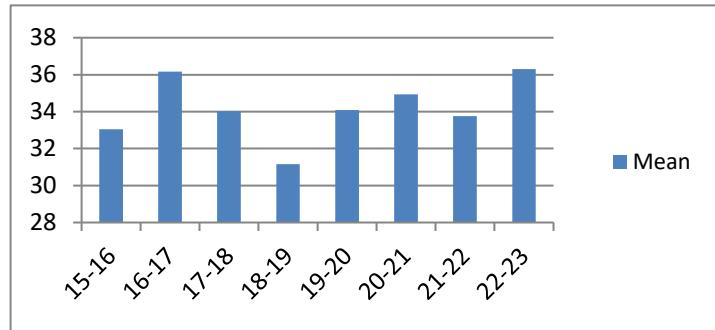
**Average Incarceration Length - Identity Theft - All Offenders**

| Fiscal Year | Mean  | Median | Standard Deviation | N   |
|-------------|-------|--------|--------------------|-----|
| 15-16       | 47.78 | 48.00  | 26.61              | 345 |
| 16-17       | 49.29 | 48.00  | 26.33              | 335 |
| 17-18       | 44.39 | 36.00  | 26.10              | 326 |
| 18-19       | 37.74 | 24.07  | 21.32              | 331 |
| 19-20       | 44.90 | 36.00  | 26.37              | 166 |
| 20-21       | 45.58 | 36.00  | 27.34              | 114 |
| 21-22       | 41.18 | 36.00  | 18.01              | 149 |
| 22-23       | 50.83 | 48.00  | 34.70              | 178 |



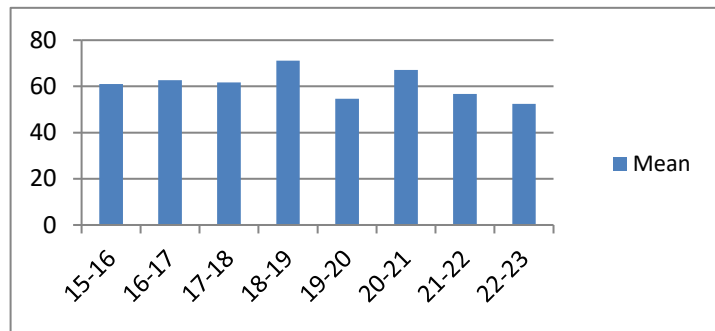
**Average Incarceration Length - Identity Theft - Standard Offenders**

| Fiscal Year | Mean  | Median | Standard Deviation | N   |
|-------------|-------|--------|--------------------|-----|
| 15-16       | 33.04 | 24.03  | 10.33              | 219 |
| 16-17       | 36.17 | 36.00  | 10.76              | 216 |
| 17-18       | 34.02 | 36.00  | 10.40              | 242 |
| 18-19       | 31.16 | 24.00  | 9.31               | 285 |
| 19-20       | 34.08 | 36.00  | 12.32              | 118 |
| 20-21       | 34.93 | 36.00  | 9.79               | 90  |
| 21-22       | 33.75 | 36.00  | 9.67               | 105 |
| 22-23       | 36.30 | 24.00  | 20.64              | 121 |



**Average Incarceration Length - Identity Theft - Multiple Offenders**

| Fiscal Year | Mean  | Median | Standard Deviation | N  |
|-------------|-------|--------|--------------------|----|
| 15-16       | 61.05 | 60.00  | 13.93              | 91 |
| 16-17       | 62.72 | 60.00  | 17.96              | 97 |
| 17-18       | 61.75 | 48.00  | 16.76              | 65 |
| 18-19       | 71.10 | 72.00  | 21.97              | 40 |
| 19-20       | 54.71 | 48.00  | 14.83              | 34 |
| 20-21       | 67.06 | 72.00  | 16.46              | 17 |
| 21-22       | 56.78 | 48.00  | 14.70              | 41 |
| 22-23       | 52.36 | 48.00  | 11.93              | 33 |

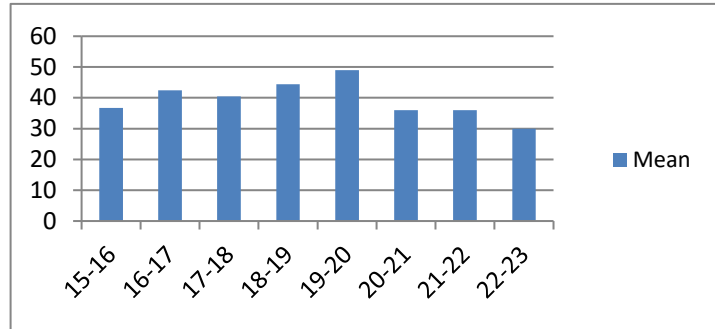


## Average Incarceration Lengths in Months by Felony Class and Offense

Note: Column N indicates the number of felony convictions. Individual offenders can have multiple convictions. Incarceration includes life without parole and death sentences. Probation includes sentences to community corrections.

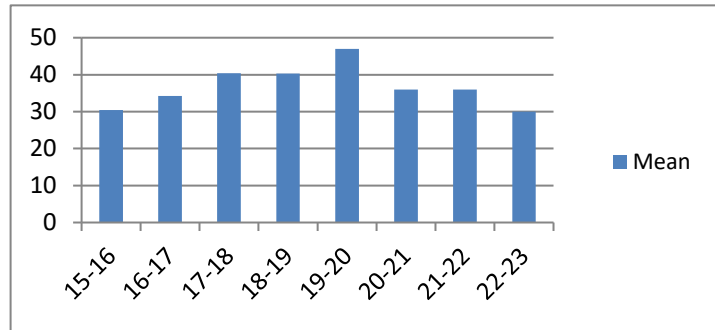
**Average Incarceration Length - Obtain Drugs by Fraud - All Offenders**

| Fiscal Year | Mean  | Median | Standard Deviation | N   |
|-------------|-------|--------|--------------------|-----|
| 15-16       | 36.69 | 36.00  | 18.62              | 176 |
| 16-17       | 42.45 | 36.00  | 22.79              | 40  |
| 17-18       | 40.43 | 48.00  | 10.30              | 65  |
| 18-19       | 44.44 | 36.00  | 16.58              | 27  |
| 19-20       | 48.96 | 48.00  | 12.79              | 50  |
| 20-21       | 36.00 | 36.00  | .                  | 1   |
| 21-22       | 36.00 | 36.00  | .                  | 1   |
| 22-23       | 30.00 | 24.00  | 12.00              | 4   |



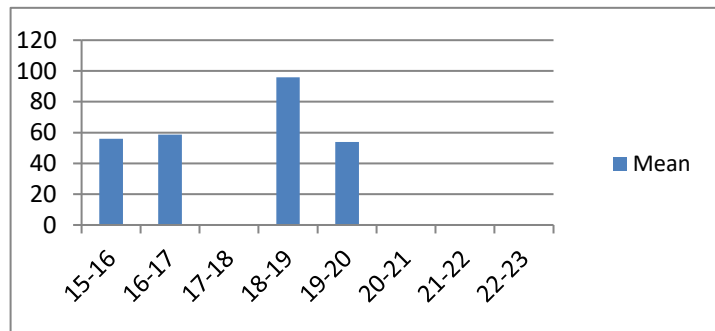
**Average Incarceration Length - Obtain Drugs by Fraud - Standard Offenders**

| Fiscal Year | Mean  | Median | Standard Deviation | N   |
|-------------|-------|--------|--------------------|-----|
| 15-16       | 30.41 | 24.03  | 7.17               | 150 |
| 16-17       | 34.20 | 36.00  | 8.21               | 30  |
| 17-18       | 40.43 | 48.00  | 10.30              | 65  |
| 18-19       | 40.32 | 36.00  | 7.65               | 25  |
| 19-20       | 46.98 | 48.00  | 4.21               | 47  |
| 20-21       | 36    | 36     | .                  | 1   |
| 21-22       | 36.00 | 36.00  | .                  | 1   |
| 22-23       | 30.00 | 24.00  | 12.00              | 4   |



**Average Incarceration Length - Obtain Drugs by Fraud - Multiple Offenders**

| Fiscal Year | Mean  | Median | Standard Deviation | N  |
|-------------|-------|--------|--------------------|----|
| 15-16       | 56.00 | 48.00  | 14.10              | 15 |
| 16-17       | 58.67 | 48.00  | 21.17              | 9  |
| 17-18       | .     | .      | .                  | 0  |
| 18-19       | 96.00 | 96.00  | 0.00               | 2  |
| 19-20       | 54.00 | 54.00  | 8.49               | 2  |
| 20-21       | .     | .      | .                  | 0  |
| 21-22       | .     | .      | .                  | 0  |
| 22-23       | .     | .      | .                  | 0  |

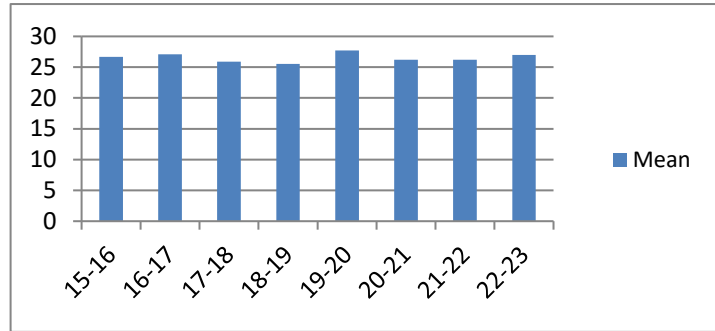


## Average Incarceration Lengths in Months by Felony Class and Offense

Note: Column N indicates the number of felony convictions. Individual offenders can have multiple convictions. Incarceration includes life without parole and death sentences. Probation includes sentences to community corrections.

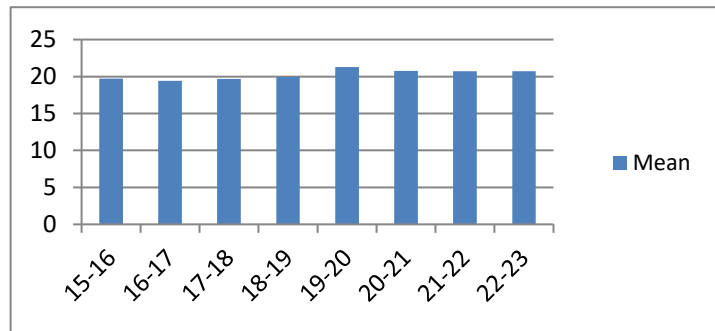
**Average Incarceration Length - Class E -  
All Offenders**

| Fiscal Year | Mean  | Median | Standard Deviation | N     |
|-------------|-------|--------|--------------------|-------|
| 15-16       | 26.70 | 24.00  | 14.59              | 5,672 |
| 16-17       | 27.10 | 24.00  | 15.09              | 5,151 |
| 17-18       | 25.91 | 24.00  | 14.39              | 6,094 |
| 18-19       | 25.51 | 24.00  | 14.01              | 5,454 |
| 19-20       | 27.74 | 24.00  | 15.14              | 3,188 |
| 20-21       | 26.19 | 24.00  | 13.80              | 2,555 |
| 21-22       | 26.23 | 24.00  | 13.75              | 3,220 |
| 22-23       | 26.97 | 24.00  | 15.50              | 2,904 |



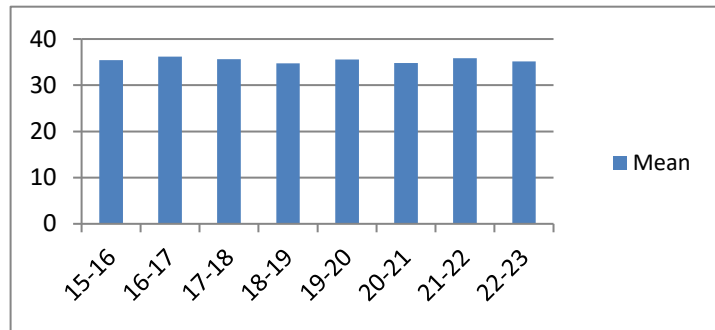
**Average Incarceration Length - Class E -  
Standard Offenders**

| Fiscal Year | Mean  | Median | Standard Deviation | N     |
|-------------|-------|--------|--------------------|-------|
| 15-16       | 19.71 | 24.00  | 6.37               | 3,829 |
| 16-17       | 19.40 | 24.00  | 6.28               | 3,440 |
| 17-18       | 19.67 | 24.00  | 6.35               | 4,461 |
| 18-19       | 19.92 | 24.00  | 6.61               | 4,068 |
| 19-20       | 21.28 | 24.00  | 7.84               | 2,267 |
| 20-21       | 20.77 | 24.00  | 7.30               | 1,859 |
| 21-22       | 20.70 | 24.00  | 6.53               | 2,392 |
| 22-23       | 20.71 | 24.00  | 8.37               | 2,032 |



**Average Incarceration Length - Class E -  
Multiple Offenders**

| Fiscal Year | Mean  | Median | Standard Deviation | N     |
|-------------|-------|--------|--------------------|-------|
| 15-16       | 35.44 | 36.00  | 11.27              | 1,406 |
| 16-17       | 36.18 | 36.00  | 11.01              | 1,236 |
| 17-18       | 35.65 | 36.00  | 10.24              | 1,172 |
| 18-19       | 34.73 | 36.00  | 10.74              | 1,019 |
| 19-20       | 35.59 | 36.00  | 10.22              | 653   |
| 20-21       | 34.78 | 36.00  | 10.39              | 529   |
| 21-22       | 35.85 | 36.00  | 10.64              | 624   |
| 22-23       | 35.16 | 36.00  | 11.45              | 663   |



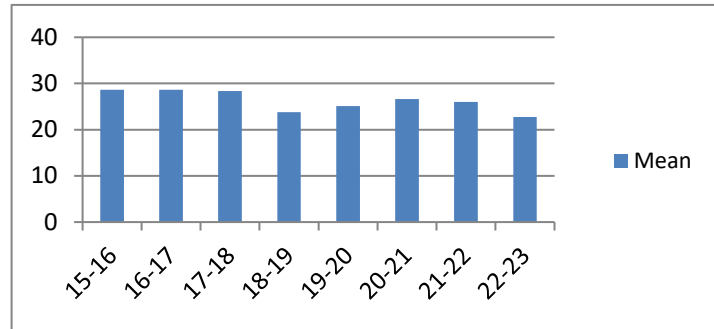


## Average Incarceration Lengths in Months by Felony Class and Offense

Note: Column N indicates the number of felony convictions. Individual offenders can have multiple convictions. Incarceration includes life without parole and death sentences. Probation includes sentences to community corrections.

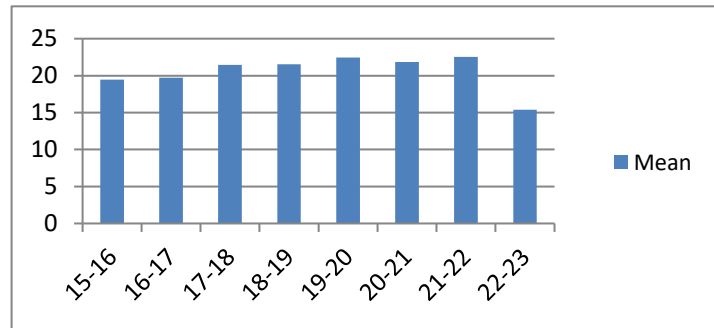
**Average Incarceration Length - Forgery: Up to \$1,000 - All Offenders**

| Fiscal Year | Mean  | Median | Standard Deviation | N   |
|-------------|-------|--------|--------------------|-----|
| 15-16       | 28.65 | 24.00  | 15.64              | 540 |
| 16-17       | 28.67 | 24.00  | 15.54              | 587 |
| 17-18       | 28.35 | 24.00  | 15.72              | 424 |
| 18-19       | 23.82 | 24.00  | 8.36               | 246 |
| 19-20       | 25.09 | 24.00  | 9.30               | 222 |
| 20-21       | 26.65 | 24.00  | 11.18              | 103 |
| 21-22       | 26.03 | 24.00  | 10.95              | 59  |
| 22-23       | 22.74 | 12.00  | 15.43              | 86  |



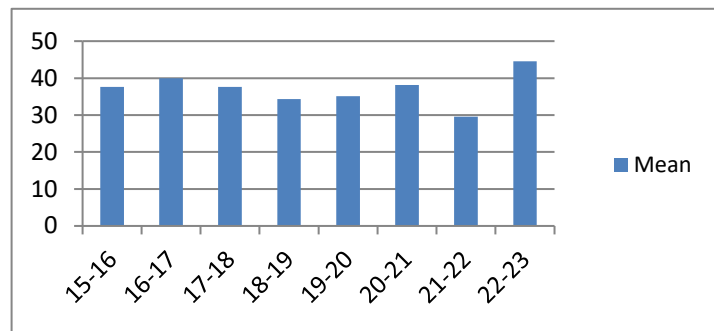
**Average Incarceration Length - Forgery: Up to \$1,000 - Standard Offenders**

| Fiscal Year | Mean  | Median | Standard Deviation | N   |
|-------------|-------|--------|--------------------|-----|
| 15-16       | 19.45 | 24.00  | 6.32               | 341 |
| 16-17       | 19.74 | 24.00  | 5.71               | 380 |
| 17-18       | 21.46 | 24.00  | 6.89               | 314 |
| 18-19       | 21.52 | 24.00  | 4.82               | 207 |
| 19-20       | 22.46 | 24.00  | 5.37               | 193 |
| 20-21       | 21.85 | 24.00  | 4.93               | 78  |
| 21-22       | 22.54 | 24.00  | 7.68               | 41  |
| 22-23       | 15.40 | 12.00  | 6.29               | 67  |



**Average Incarceration Length - Forgery: Up to \$1,000 - Multiple Offenders**

| Fiscal Year | Mean  | Median | Standard Deviation | N   |
|-------------|-------|--------|--------------------|-----|
| 15-16       | 37.59 | 36.00  | 9.32               | 140 |
| 16-17       | 39.96 | 36.00  | 11.82              | 138 |
| 17-18       | 37.60 | 36.00  | 9.11               | 75  |
| 18-19       | 34.33 | 36.00  | 10.40              | 36  |
| 19-20       | 35.14 | 36.00  | 9.94               | 14  |
| 20-21       | 38.14 | 36.00  | 7.04               | 21  |
| 21-22       | 29.60 | 24.00  | 8.92               | 15  |
| 22-23       | 44.57 | 48.00  | 5.63               | 14  |

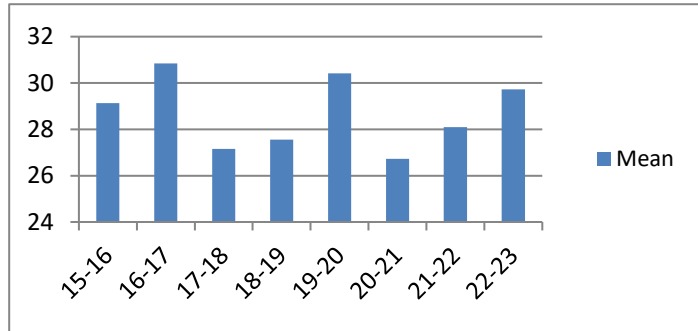


## Average Incarceration Lengths in Months by Felony Class and Offense

Note: Column N indicates the number of felony convictions. Individual offenders can have multiple convictions. Incarceration includes life without parole and death sentences. Probation includes sentences to community corrections.

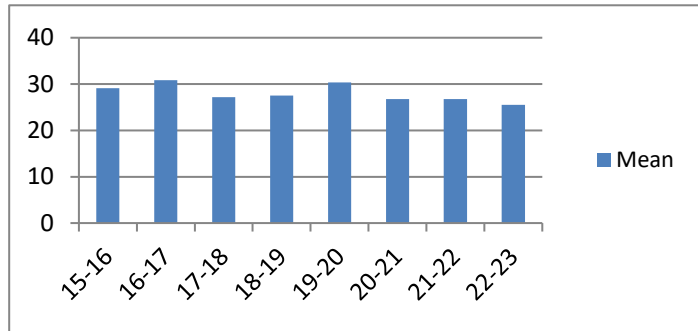
**Average Incarceration Length - Burglary: Auto - All Offenders**

| Fiscal Year | Mean  | Median | Standard Deviation | N   |
|-------------|-------|--------|--------------------|-----|
| 15-16       | 29.13 | 24.00  | 14.87              | 817 |
| 16-17       | 30.84 | 24.00  | 17.91              | 605 |
| 17-18       | 27.15 | 24.00  | 16.42              | 918 |
| 18-19       | 27.55 | 24.00  | 15.13              | 754 |
| 19-20       | 30.41 | 24.00  | 16.91              | 469 |
| 20-21       | 26.73 | 24.00  | 13.02              | 433 |
| 21-22       | 28.10 | 24.00  | 13.24              | 506 |
| 22-23       | 29.73 | 24.00  | 15.75              | 666 |



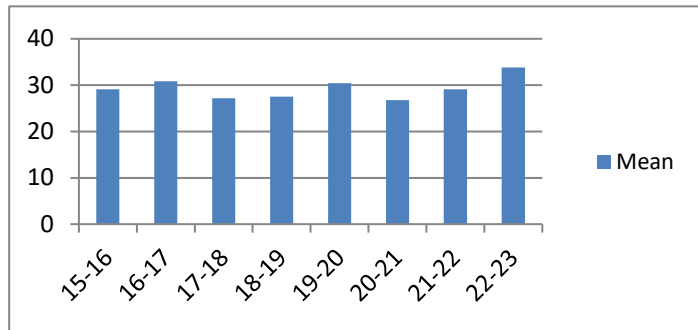
**Average Incarceration Length - Burglary: Auto - Standard Offenders**

| Fiscal Year | Mean  | Median | Standard Deviation | N   |
|-------------|-------|--------|--------------------|-----|
| 15-16       | 29.13 | 24.00  | 14.87              | 817 |
| 16-17       | 30.84 | 24.00  | 17.91              | 605 |
| 17-18       | 27.15 | 24.00  | 16.42              | 918 |
| 18-19       | 27.55 | 24.00  | 15.13              | 754 |
| 19-20       | 30.38 | 24.00  | 16.94              | 467 |
| 20-21       | 26.73 | 24.00  | 13.02              | 433 |
| 21-22       | 26.75 | 24.00  | 12.53              | 463 |
| 22-23       | 25.52 | 24.00  | 12.17              | 515 |



**Average Incarceration Length - Burglary: Auto - Multiple Offenders**

| Fiscal Year | Mean  | Median | Standard Deviation | N   |
|-------------|-------|--------|--------------------|-----|
| 15-16       | 29.13 | 24.00  | 14.87              | 817 |
| 16-17       | 30.84 | 24.00  | 17.91              | 605 |
| 17-18       | 27.15 | 24.00  | 16.42              | 918 |
| 18-19       | 27.55 | 24.00  | 15.13              | 754 |
| 19-20       | 30.41 | 24.00  | 16.91              | 469 |
| 20-21       | 26.76 | 24.00  | 13.08              | 429 |
| 21-22       | 29.08 | 24.00  | 14.18              | 376 |
| 22-23       | 33.78 | 24.00  | 16.44              | 229 |

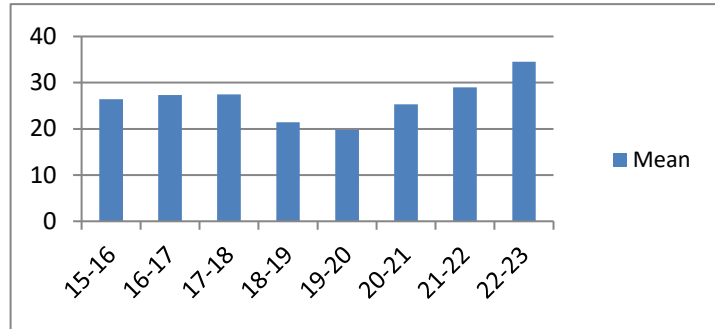


## Average Incarceration Lengths in Months by Felony Class and Offense

Note: Column N indicates the number of felony convictions. Individual offenders can have multiple convictions. Incarceration includes life without parole and death sentences. Probation includes sentences to community corrections.

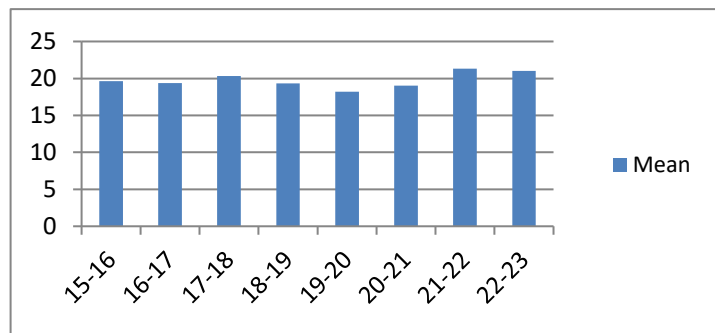
**Average Incarceration Length - Theft: \$500 - \$1,000 - All Offenders**

| Fiscal Year | Mean  | Median | Standard Deviation | N   |
|-------------|-------|--------|--------------------|-----|
| 15-16       | 26.45 | 24.00  | 14.64              | 824 |
| 16-17       | 27.30 | 24.00  | 15.18              | 680 |
| 17-18       | 27.46 | 24.00  | 14.92              | 356 |
| 18-19       | 21.45 | 24.00  | 9.30               | 165 |
| 19-20       | 19.76 | 24.00  | 8.85               | 58  |
| 20-21       | 25.33 | 24.00  | 16.17              | 36  |
| 21-22       | 29.00 | 24.00  | 17.32              | 12  |
| 22-23       | 34.50 | 36.00  | 14.96              | 8   |



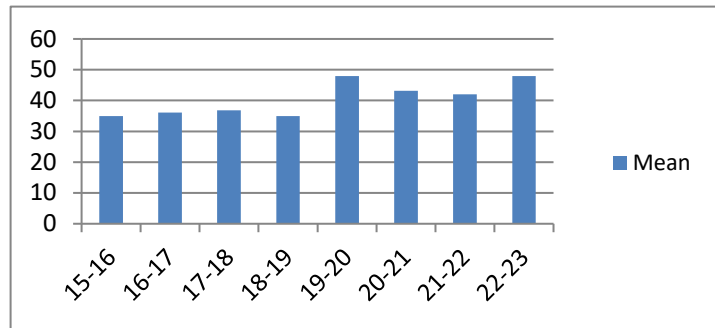
**Average Incarceration Length - Theft: \$500 - \$1,000 - Standard Offenders**

| Fiscal Year | Mean  | Median | Standard Deviation | N   |
|-------------|-------|--------|--------------------|-----|
| 15-16       | 19.62 | 24.00  | 6.00               | 566 |
| 16-17       | 19.38 | 24.00  | 6.39               | 452 |
| 17-18       | 20.33 | 24.00  | 7.22               | 245 |
| 18-19       | 19.35 | 24.00  | 5.80               | 146 |
| 19-20       | 18.22 | 24.00  | 6.00               | 55  |
| 20-21       | 19.03 | 24.00  | 6.82               | 29  |
| 21-22       | 21.33 | 24.00  | 8.00               | 9   |
| 22-23       | 21.00 | 24.00  | 6.00               | 4   |



**Average Incarceration Length - Theft: \$500 - \$1,000 - Multiple Offenders**

| Fiscal Year | Mean  | Median | Standard Deviation | N   |
|-------------|-------|--------|--------------------|-----|
| 15-16       | 34.97 | 36.00  | 12.26              | 193 |
| 16-17       | 36.15 | 36.00  | 10.41              | 165 |
| 17-18       | 36.80 | 36.00  | 11.08              | 83  |
| 18-19       | 34.94 | 36.00  | 12.04              | 17  |
| 19-20       | 48.00 | 48.00  | 0.00               | 3   |
| 20-21       | 43.20 | 48.00  | 13.68              | 5   |
| 21-22       | 42.00 | 42.00  | 8.49               | 2   |
| 22-23       | 48.00 | 48.00  | 0.00               | 4   |

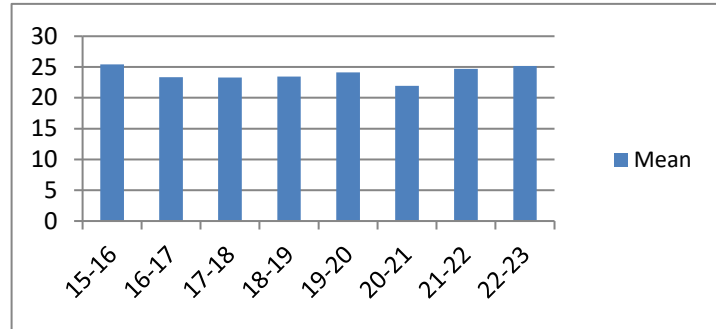


## Average Incarceration Lengths in Months by Felony Class and Offense

Note: Column N indicates the number of felony convictions. Individual offenders can have multiple convictions. Incarceration includes life without parole and death sentences. Probation includes sentences to community corrections.

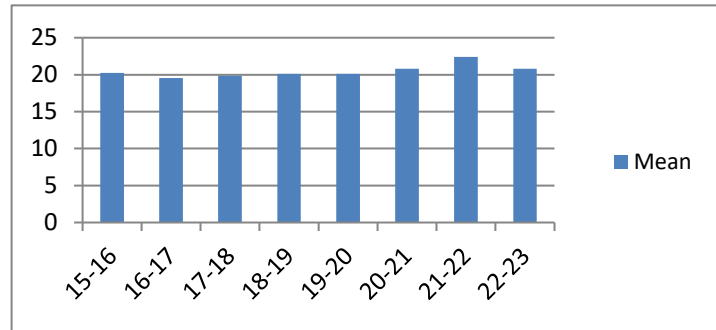
### Average Incarceration Length - Schedule VI Drugs: Not < 1/2 Ounce - All Offenders

| Fiscal Year | Mean  | Median | Standard Deviation | N   |
|-------------|-------|--------|--------------------|-----|
| 15-16       | 25.44 | 24.00  | 12.95              | 401 |
| 16-17       | 23.34 | 24.00  | 11.33              | 289 |
| 17-18       | 23.30 | 24.00  | 10.89              | 350 |
| 18-19       | 23.45 | 24.00  | 11.89              | 332 |
| 19-20       | 24.14 | 24.00  | 11.95              | 159 |
| 20-21       | 21.93 | 24.00  | 6.98               | 104 |
| 21-22       | 24.69 | 24.00  | 9.93               | 167 |
| 22-23       | 25.17 | 24.00  | 13.23              | 145 |



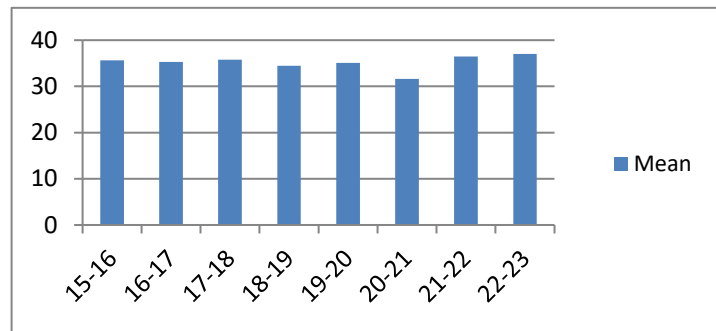
### Average Incarceration Length - Schedule VI Drugs: Not < 1/2 Ounce - Standard Offenders

| Fiscal Year | Mean  | Median | Standard Deviation | N   |
|-------------|-------|--------|--------------------|-----|
| 15-16       | 20.24 | 24.00  | 6.19               | 288 |
| 16-17       | 19.54 | 24.00  | 6.04               | 231 |
| 17-18       | 19.87 | 24.00  | 6.10               | 289 |
| 18-19       | 20.11 | 24.00  | 6.67               | 281 |
| 19-20       | 20.11 | 24.00  | 6.08               | 127 |
| 20-21       | 20.78 | 24.00  | 5.34               | 93  |
| 21-22       | 22.41 | 24.00  | 7.35               | 139 |
| 22-23       | 20.81 | 24.00  | 7.36               | 116 |



### Average Incarceration Length - Schedule VI Drugs: Not < 1/2 Ounce - Multiple Offenders

| Fiscal Year | Mean  | Median | Standard Deviation | N  |
|-------------|-------|--------|--------------------|----|
| 15-16       | 35.67 | 36.00  | 10.48              | 91 |
| 16-17       | 35.27 | 36.00  | 10.72              | 49 |
| 17-18       | 35.76 | 36.00  | 10.10              | 49 |
| 18-19       | 34.46 | 36.00  | 9.90               | 39 |
| 19-20       | 35.11 | 36.00  | 10.49              | 27 |
| 20-21       | 31.64 | 36.00  | 11.09              | 11 |
| 21-22       | 36.44 | 36.00  | 13.10              | 27 |
| 22-23       | 37.00 | 36.00  | 12.22              | 24 |

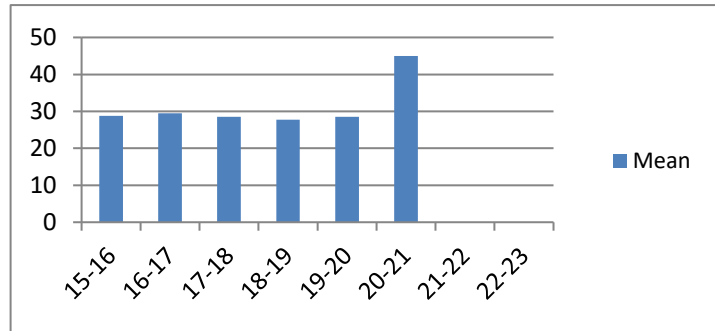


## Average Incarceration Lengths in Months by Felony Class and Offense

Note: Column N indicates the number of felony convictions. Individual offenders can have multiple convictions. Incarceration includes life without parole and death sentences. Probation includes sentences to community corrections.

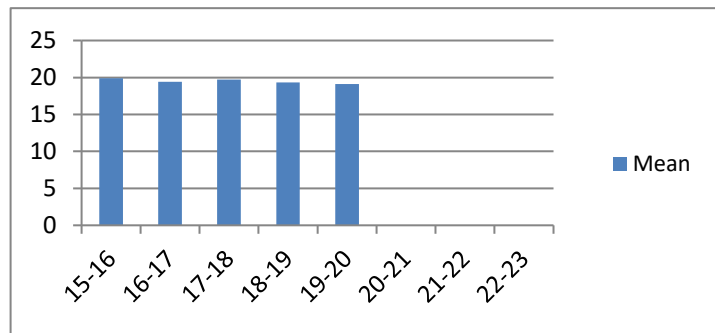
**Average Incarceration Length - Habitual Traffic Offender - All Offenders**

| Fiscal Year | Mean  | Median | Standard Deviation | N   |
|-------------|-------|--------|--------------------|-----|
| 15-16       | 28.77 | 24.00  | 15.27              | 297 |
| 16-17       | 29.45 | 24.00  | 15.50              | 283 |
| 17-18       | 28.53 | 24.00  | 14.21              | 262 |
| 18-19       | 27.78 | 24.00  | 15.12              | 237 |
| 19-20       | 28.50 | 24.00  | 15.20              | 28  |
| 20-21       | 45.00 | 45.00  | 12.73              | 2   |
| 21-22       | .     | .      | .                  | 0   |
| 22-23       | .     | .      | .                  | 0   |



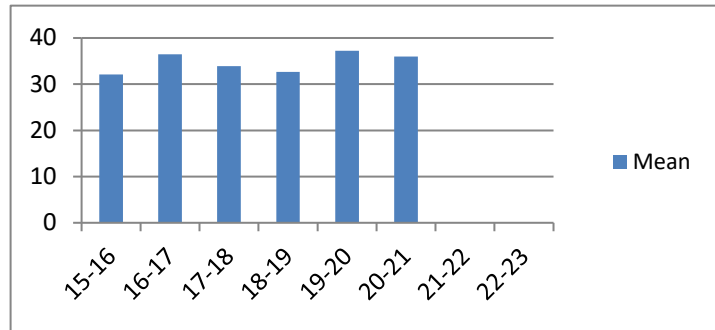
**Average Incarceration Length - Habitual Traffic Offender - Standard Offenders**

| Fiscal Year | Mean  | Median | Standard Deviation | N   |
|-------------|-------|--------|--------------------|-----|
| 15-16       | 19.88 | 24.00  | 5.47               | 161 |
| 16-17       | 19.43 | 24.00  | 5.66               | 162 |
| 17-18       | 19.74 | 24.00  | 5.54               | 143 |
| 18-19       | 19.32 | 18.00  | 6.17               | 141 |
| 19-20       | 19.12 | 24.00  | 5.89               | 16  |
| 20-21       | .     | .      | .                  | 0   |
| 21-22       | .     | .      | .                  | 0   |
| 22-23       | .     | .      | .                  | 0   |



**Average Incarceration Length - Habitual Traffic Offender - Multiple Offenders**

| Fiscal Year | Mean  | Median | Standard Deviation | N   |
|-------------|-------|--------|--------------------|-----|
| 15-16       | 32.08 | 30.00  | 9.45               | 103 |
| 16-17       | 36.48 | 36.00  | 10.05              | 83  |
| 17-18       | 33.90 | 36.00  | 9.13               | 93  |
| 18-19       | 32.68 | 36.00  | 9.24               | 63  |
| 19-20       | 37.20 | 42.00  | 11.93              | 10  |
| 20-21       | 36.00 | 36.00  | .                  | 1   |
| 21-22       | .     | .      | .                  | 0   |
| 22-23       | .     | .      | .                  | 0   |

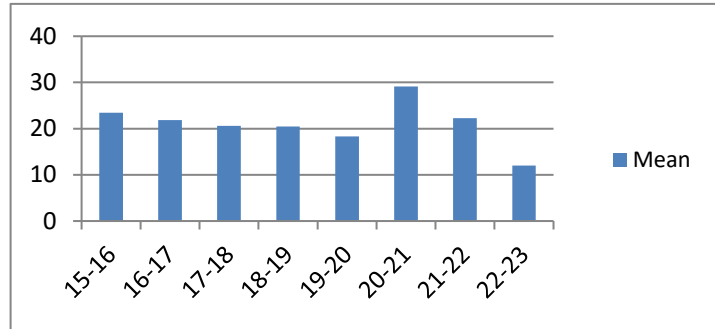


## Average Incarceration Lengths in Months by Felony Class and Offense

Note: Column N indicates the number of felony convictions. Individual offenders can have multiple convictions. Incarceration includes life without parole and death sentences. Probation includes sentences to community corrections.

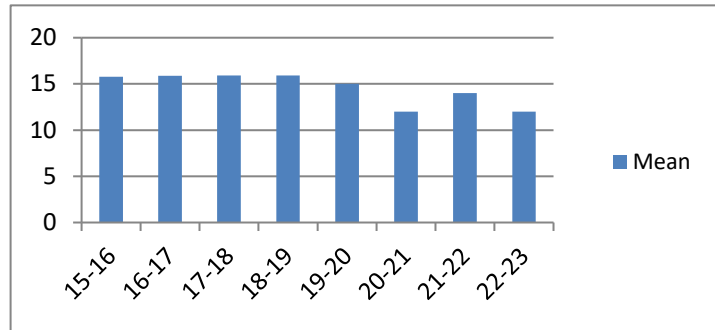
**Average Incarceration Length - Failure to Appear  
(Felony) - All Offenders**

| Fiscal Year | Mean  | Median | Standard Deviation | N   |
|-------------|-------|--------|--------------------|-----|
| 15-16       | 23.46 | 24.00  | 15.57              | 330 |
| 16-17       | 21.88 | 18.00  | 13.69              | 397 |
| 17-18       | 20.60 | 12.00  | 12.59              | 497 |
| 18-19       | 20.44 | 12.00  | 13.29              | 476 |
| 19-20       | 18.33 | 12.00  | 11.58              | 39  |
| 20-21       | 29.14 | 12.00  | 25.79              | 7   |
| 21-22       | 22.29 | 12.00  | 22.37              | 7   |
| 22-23       | 12.00 | 12.00  | .                  | 1   |



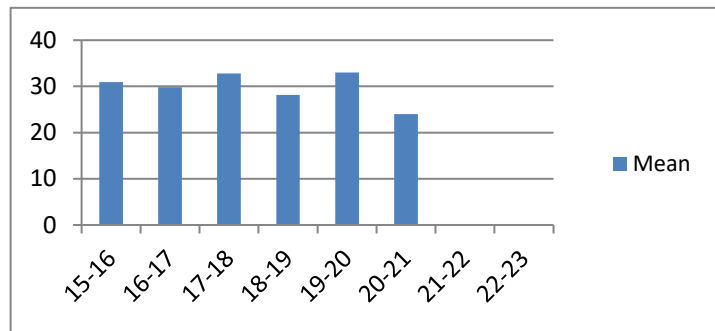
**Average Incarceration Length - Failure to Appear  
(Felony) - Standard Offenders**

| Fiscal Year | Mean  | Median | Standard Deviation | N   |
|-------------|-------|--------|--------------------|-----|
| 15-16       | 15.78 | 12.00  | 5.41               | 218 |
| 16-17       | 15.89 | 12.00  | 5.61               | 288 |
| 17-18       | 15.92 | 12.00  | 5.37               | 393 |
| 18-19       | 15.90 | 12.00  | 5.56               | 381 |
| 19-20       | 15.03 | 12.00  | 5.16               | 34  |
| 20-21       | 12.00 | 12.00  | 0.00               | 4   |
| 21-22       | 14.00 | 12.00  | 4.90               | 6   |
| 22-23       | 12.00 | 12.00  | .                  | 1   |



**Average Incarceration Length - Failure to Appear  
(Felony) - Multiple Offenders**

| Fiscal Year | Mean  | Median | Standard Deviation | N  |
|-------------|-------|--------|--------------------|----|
| 15-16       | 30.94 | 24.00  | 9.76               | 83 |
| 16-17       | 29.84 | 24.00  | 9.06               | 79 |
| 17-18       | 32.82 | 30.00  | 10.36              | 83 |
| 18-19       | 28.15 | 24.00  | 8.55               | 65 |
| 19-20       | 33.00 | 36.00  | 6.00               | 4  |
| 20-21       | 24.00 | 24.00  | .                  | 1  |
| 21-22       | .     | .      | .                  | 0  |
| 22-23       | .     | .      | .                  | 0  |

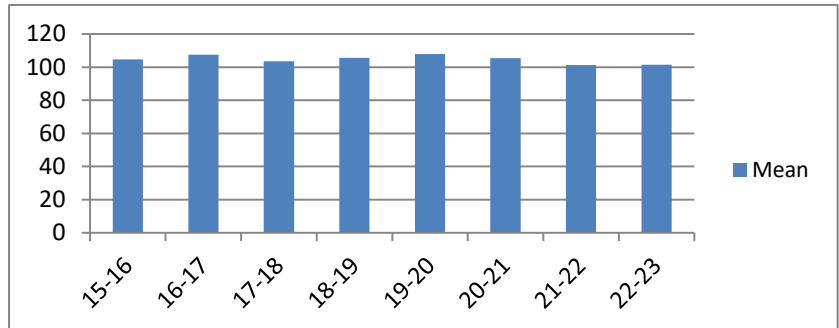


# Average Probation Lengths in Months by Felony Class

Note: Column N indicates the number of felony convictions. Individual offenders can have multiple convictions. Incarceration includes lifewithout parole and death sentences. Probation includes sentences to community corrections.

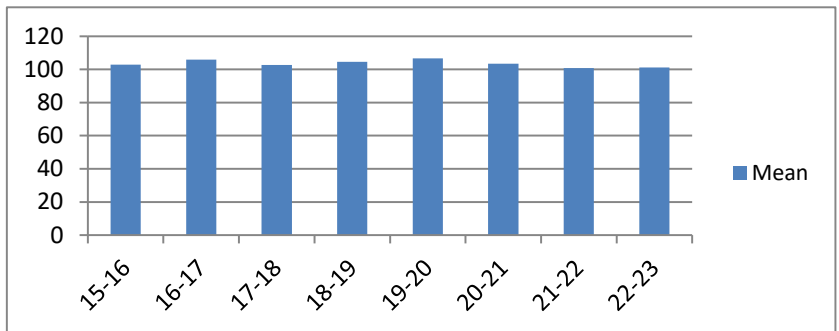
## Average Probation Length - Felony Class B - All Offenders

| Fiscal Year | Mean   | Median | Standard Deviation | N     |
|-------------|--------|--------|--------------------|-------|
| 15-16       | 104.68 | 96.00  | 17.95              | 381   |
| 16-17       | 107.50 | 96.00  | 21.98              | 338   |
| 17-18       | 103.44 | 96.00  | 16.88              | 612   |
| 18-19       | 105.63 | 96.00  | 17.52              | 760   |
| 19-20       | 107.83 | 96.00  | 21.92              | 609   |
| 20-21       | 105.51 | 96.00  | 20.10              | 818   |
| 21-22       | 101.24 | 96.00  | 14.15              | 948   |
| 22-23       | 101.45 | 96.00  | 14.07              | 1,019 |



## Average Probation Length - Felony Class B - Standard Offenders

| Fiscal Year | Mean   | Median | Standard Deviation | N   |
|-------------|--------|--------|--------------------|-----|
| 15-16       | 102.88 | 96.00  | 14.34              | 360 |
| 16-17       | 105.93 | 96.00  | 18.89              | 326 |
| 17-18       | 102.77 | 96.00  | 14.32              | 591 |
| 18-19       | 104.69 | 96.00  | 15.78              | 743 |
| 19-20       | 106.73 | 96.00  | 20.82              | 586 |
| 20-21       | 103.50 | 96.00  | 16.13              | 784 |
| 21-22       | 100.86 | 96.00  | 13.07              | 919 |
| 22-23       | 101.11 | 96.00  | 12.89              | 985 |



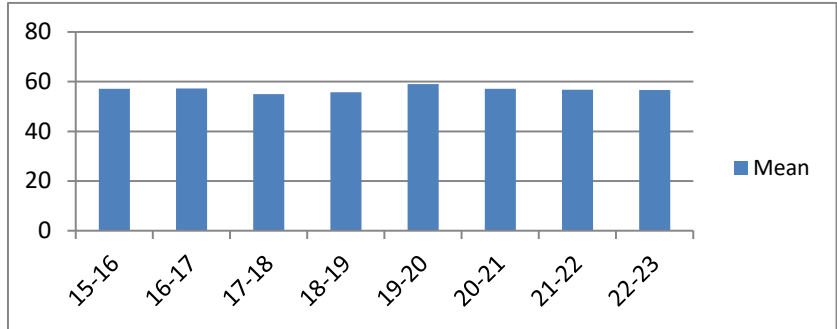
The table for multiple offenders was not included due to low occurrence frequencies.

# Average Probation Lengths in Months by Felony Class

Note: Column N indicates the number of felony convictions. Individual offenders can have multiple convictions. Incarceration includes lifewithout parole and death sentences. Probation includes sentences to community corrections.

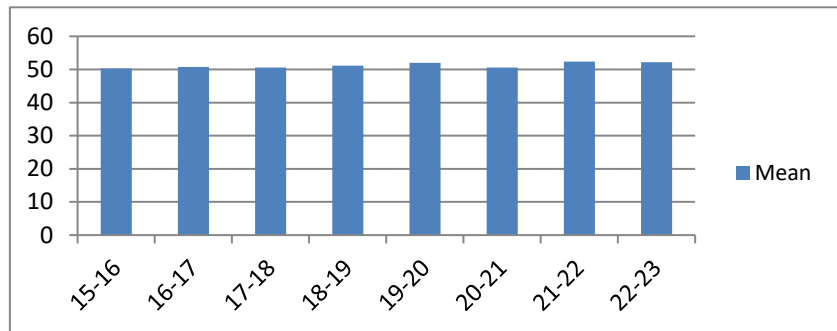
**Average Probation Length - Class C - All Offenders**

| Fiscal Year | Mean  | Median | Standard Deviation | N     |
|-------------|-------|--------|--------------------|-------|
| 15-16       | 57.11 | 48.00  | 24.50              | 1,759 |
| 16-17       | 57.19 | 48.00  | 23.69              | 1,798 |
| 17-18       | 54.93 | 48.00  | 21.18              | 2,510 |
| 18-19       | 55.72 | 48.00  | 22.29              | 2,599 |
| 19-20       | 58.98 | 54.00  | 23.13              | 1,882 |
| 20-21       | 57.09 | 48.00  | 23.40              | 2,045 |
| 21-22       | 56.78 | 48.00  | 20.87              | 2,969 |
| 22-23       | 56.68 | 48.00  | 20.90              | 3,292 |



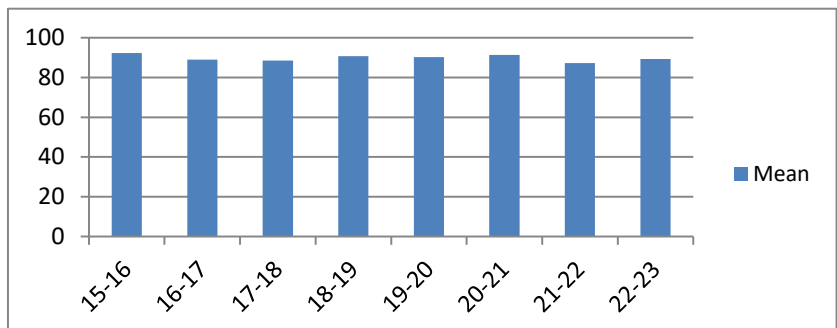
**Average Probation Length - Class C - Standard Offenders**

| Fiscal Year | Mean  | Median | Standard Deviation | N     |
|-------------|-------|--------|--------------------|-------|
| 15-16       | 50.33 | 48.00  | 16.81              | 1,482 |
| 16-17       | 50.74 | 48.00  | 16.92              | 1,523 |
| 17-18       | 50.58 | 48.00  | 16.28              | 2,242 |
| 18-19       | 51.17 | 48.00  | 17.63              | 2,311 |
| 19-20       | 52.04 | 48.00  | 16.28              | 1,546 |
| 20-21       | 50.57 | 48.00  | 16.24              | 1,737 |
| 21-22       | 52.38 | 48.00  | 16.37              | 2,603 |
| 22-23       | 52.14 | 48.00  | 16.09              | 2,896 |



**Average Probation Length - Class C - Multiple Offenders**

| Fiscal Year | Mean  | Median | Standard Deviation | N   |
|-------------|-------|--------|--------------------|-----|
| 15-16       | 92.35 | 96.00  | 18.37              | 218 |
| 16-17       | 88.97 | 88.50  | 21.94              | 238 |
| 17-18       | 88.56 | 84.00  | 20.99              | 239 |
| 18-19       | 90.79 | 96.00  | 21.23              | 265 |
| 19-20       | 90.30 | 84.00  | 21.05              | 304 |
| 20-21       | 91.28 | 96.00  | 20.02              | 261 |
| 21-22       | 87.30 | 84.00  | 20.60              | 326 |
| 22-23       | 89.30 | 96.00  | 20.24              | 351 |



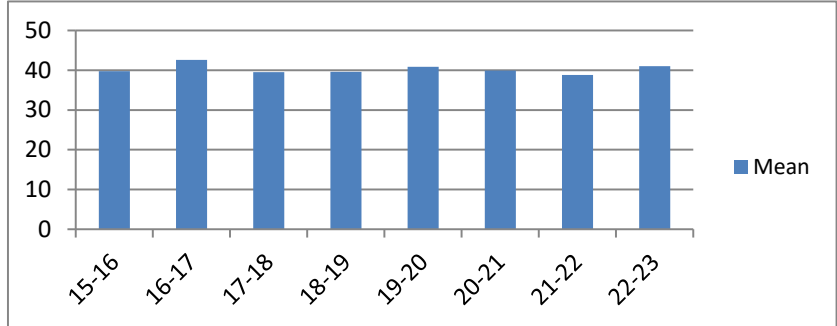


# Average Probation Lengths in Months by Felony Class

Note: Column N indicates the number of felony convictions. Individual offenders can have multiple convictions. Incarceration includes lifewithout parole and death sentences. Probation includes sentences to community corrections.

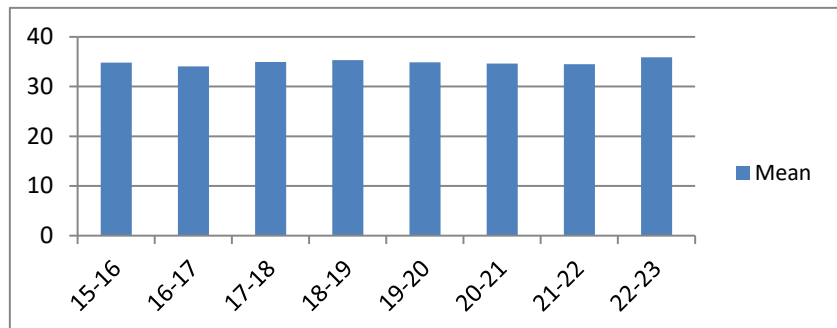
**Average Probation Length - Class D - All Offenders**

| Fiscal Year | Mean  | Median | Standard Deviation | N     |
|-------------|-------|--------|--------------------|-------|
| 15-16       | 39.72 | 36.00  | 19.36              | 2,124 |
| 16-17       | 42.59 | 36.00  | 23.36              | 2,023 |
| 17-18       | 39.54 | 36.00  | 18.68              | 2,516 |
| 18-19       | 39.58 | 36.00  | 20.76              | 2,409 |
| 19-20       | 40.83 | 36.00  | 20.88              | 1,559 |
| 20-21       | 39.92 | 36.00  | 19.97              | 1,795 |
| 21-22       | 38.80 | 36.00  | 17.25              | 2,464 |
| 22-23       | 40.98 | 36.00  | 19.77              | 2,879 |



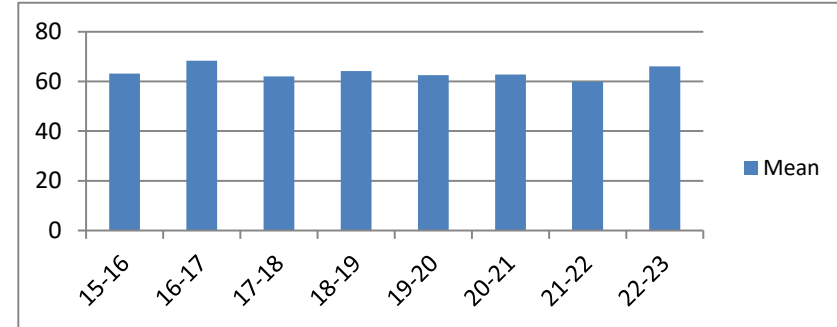
**Average Probation Length - Class D - Standard Offenders**

| Fiscal Year | Mean  | Median | Standard Deviation | N     |
|-------------|-------|--------|--------------------|-------|
| 15-16       | 34.83 | 36.00  | 13.25              | 1,815 |
| 16-17       | 34.06 | 36.00  | 11.87              | 1,618 |
| 17-18       | 34.93 | 36.00  | 11.73              | 2,185 |
| 18-19       | 35.35 | 36.00  | 15.70              | 2,121 |
| 19-20       | 34.91 | 36.00  | 13.10              | 1,299 |
| 20-21       | 34.63 | 36.00  | 11.89              | 1,538 |
| 21-22       | 34.48 | 36.00  | 11.81              | 2,102 |
| 22-23       | 35.92 | 36.00  | 13.89              | 2,457 |



**Average Probation Length - Class D - Multiple Offenders**

| Fiscal Year | Mean  | Median | Standard Deviation | N   |
|-------------|-------|--------|--------------------|-----|
| 15-16       | 63.18 | 60.00  | 19.18              | 262 |
| 16-17       | 68.37 | 72.00  | 20.18              | 318 |
| 17-18       | 62.00 | 60.00  | 18.36              | 271 |
| 18-19       | 64.20 | 60.00  | 20.38              | 242 |
| 19-20       | 62.57 | 48.00  | 20.84              | 207 |
| 20-21       | 62.83 | 60.00  | 17.97              | 201 |
| 21-22       | 59.88 | 50.00  | 16.79              | 311 |
| 22-23       | 66.03 | 72.00  | 18.03              | 339 |

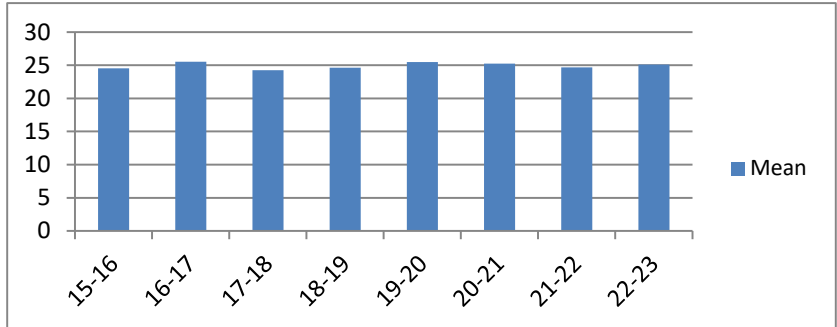


# Average Probation Lengths in Months by Felony Class

Note: Column N indicates the number of felony convictions. Individual offenders can have multiple convictions. Incarceration includes lifewithout parole and death sentences. Probation includes sentences to community corrections.

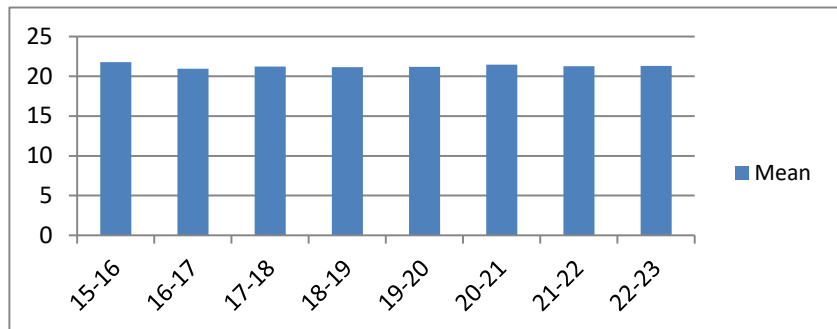
**Average Probation Length - Class E - All Offenders**

| Fiscal Year | Mean  | Median | Standard Deviation | N     |
|-------------|-------|--------|--------------------|-------|
| 15-16       | 24.55 | 24.00  | 12.17              | 2,682 |
| 16-17       | 25.53 | 24.00  | 14.56              | 2,457 |
| 17-18       | 24.26 | 24.00  | 13.43              | 3,440 |
| 18-19       | 24.64 | 24.00  | 14.09              | 3,531 |
| 19-20       | 25.48 | 24.00  | 13.27              | 2,101 |
| 20-21       | 25.24 | 24.00  | 12.74              | 1,861 |
| 21-22       | 24.66 | 24.00  | 11.63              | 2,868 |
| 22-23       | 25.11 | 24.00  | 12.50              | 2,940 |



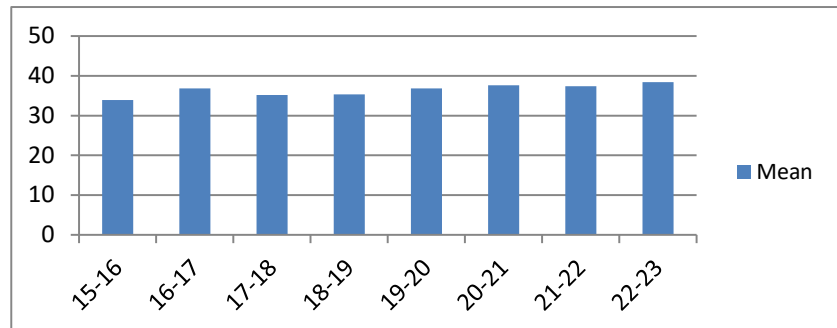
**Average Probation Length - Class E - Standard Offenders**

| Fiscal Year | Mean  | Median | Standard Deviation | N     |
|-------------|-------|--------|--------------------|-------|
| 15-16       | 21.78 | 24.00  | 8.69               | 2,247 |
| 16-17       | 20.94 | 24.00  | 9.44               | 1,959 |
| 17-18       | 21.24 | 24.00  | 9.58               | 2,934 |
| 18-19       | 21.16 | 24.00  | 10.06              | 2,958 |
| 19-20       | 21.18 | 24.00  | 7.68               | 1,692 |
| 20-21       | 21.47 | 24.00  | 7.51               | 1,560 |
| 21-22       | 21.25 | 24.00  | 7.24               | 2,395 |
| 22-23       | 21.30 | 24.00  | 7.24               | 2,425 |



**Average Probation Length - Class E - Multiple Offenders**

| Fiscal Year | Mean  | Median | Standard Deviation | N   |
|-------------|-------|--------|--------------------|-----|
| 15-16       | 33.91 | 36.00  | 10.75              | 360 |
| 16-17       | 36.84 | 36.00  | 10.75              | 379 |
| 17-18       | 35.15 | 36.00  | 11.34              | 387 |
| 18-19       | 35.29 | 36.00  | 10.55              | 436 |
| 19-20       | 36.86 | 36.00  | 10.38              | 288 |
| 20-21       | 37.64 | 36.00  | 10.43              | 201 |
| 21-22       | 37.37 | 36.00  | 10.57              | 359 |
| 22-23       | 38.37 | 36.00  | 10.17              | 392 |

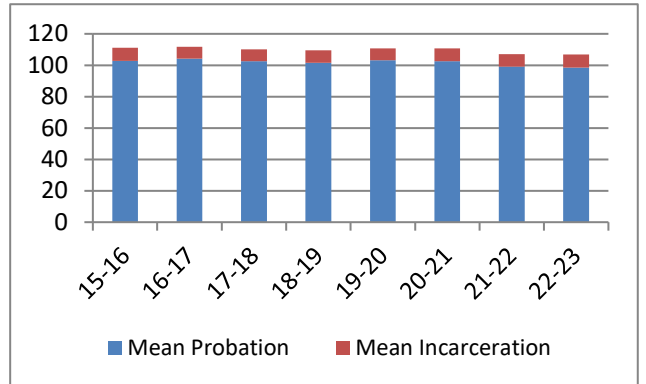


## Average Split Sentence Lengths in Months by Felony Class

Note: Column N indicates the number of felony convictions. Individual offenders can have multiple convictions. Incarceration includes life without parole and death sentences. Probation includes sentences to community corrections.

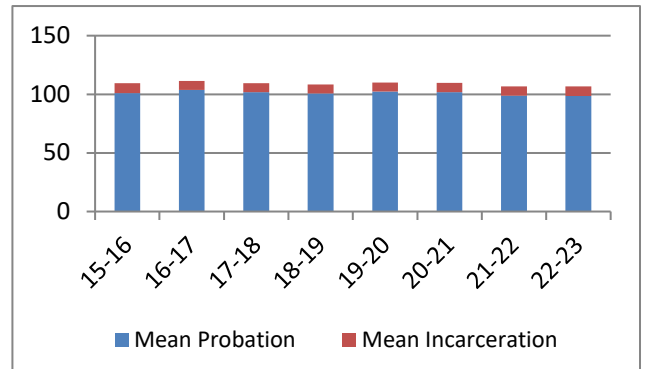
**Average Sentence Length - Felony Class B - All Offenders**

| Fiscal Year | Months of Incarceration |        |                    |     | Months of Probation |        |                    |     |
|-------------|-------------------------|--------|--------------------|-----|---------------------|--------|--------------------|-----|
|             | Mean                    | Median | Standard Deviation | N   | Mean                | Median | Standard Deviation | N   |
| 15-16       | 8.4                     | 10.1   | 4.0                | 272 | 102.8               | 96.0   | 19.0               | 272 |
| 16-17       | 7.6                     | 6.0    | 4.1                | 460 | 104.1               | 96.0   | 16.6               | 460 |
| 17-18       | 7.7                     | 6.0    | 4.2                | 657 | 102.5               | 96.0   | 16.4               | 657 |
| 18-19       | 7.8                     | 8.2    | 4.3                | 818 | 101.6               | 96.0   | 17.8               | 818 |
| 19-20       | 7.6                     | 6.0    | 4.8                | 547 | 103.2               | 96.0   | 18.7               | 547 |
| 20-21       | 8.1                     | 9.0    | 4.2                | 634 | 102.6               | 96.0   | 18.1               | 634 |
| 21-22       | 7.9                     | 8.0    | 4.2                | 934 | 99.1                | 96.0   | 13.8               | 934 |
| 22-23       | 8.3                     | 9.1    | 4.0                | 827 | 98.5                | 96.0   | 13.8               | 827 |



**Average Sentence Length - Felony Class B - Standard Offenders**

| Fiscal Year | Months of Incarceration |        |                    |     | Months of Probation |        |                    |     |
|-------------|-------------------------|--------|--------------------|-----|---------------------|--------|--------------------|-----|
|             | Mean                    | Median | Standard Deviation | N   | Mean                | Median | Standard Deviation | N   |
| 15-16       | 8.4                     | 10.0   | 4.0                | 260 | 101.1               | 96.0   | 16.9               | 260 |
| 16-17       | 7.6                     | 6.0    | 4.1                | 453 | 103.7               | 96.0   | 16.0               | 453 |
| 17-18       | 7.6                     | 6.0    | 4.2                | 640 | 101.9               | 96.0   | 14.6               | 640 |
| 18-19       | 7.8                     | 7.9    | 4.3                | 797 | 100.6               | 96.0   | 16.1               | 797 |
| 19-20       | 7.6                     | 6.0    | 4.8                | 532 | 102.3               | 96.0   | 16.4               | 532 |
| 20-21       | 8.1                     | 9.0    | 4.2                | 621 | 101.7               | 96.0   | 16.3               | 621 |
| 21-22       | 7.9                     | 8.0    | 4.2                | 922 | 98.9                | 96.0   | 13.0               | 922 |
| 22-23       | 8.3                     | 9.1    | 4.0                | 819 | 98.5                | 96.0   | 13.7               | 819 |



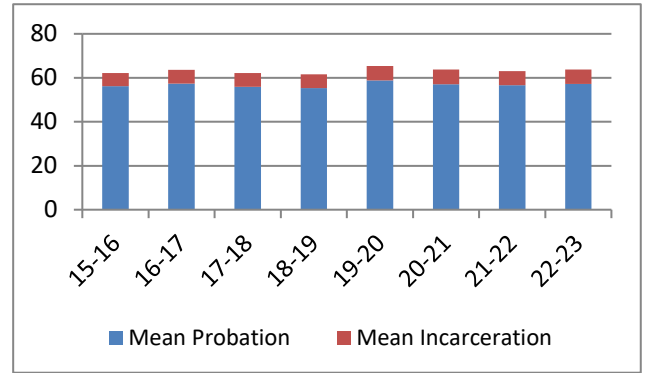
The table for multiple offenders was not included due to low occurrence frequencies.

## Average Split Sentence Lengths in Months by Felony Class

Note: Column N indicates the number of felony convictions. Individual offenders can have multiple convictions. Incarceration includes life without parole and death sentences. Probation includes sentences to community corrections.

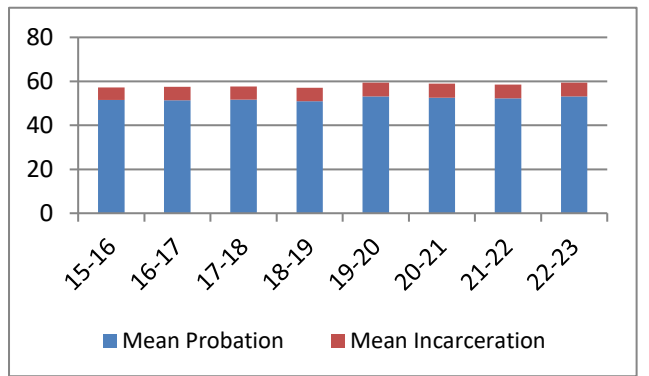
**Average Sentence Length - Class C - All Offenders**

| Fiscal Year | Months of Incarceration |        |                    |       | Months of Probation |        |                    |       |
|-------------|-------------------------|--------|--------------------|-------|---------------------|--------|--------------------|-------|
|             | Mean                    | Median | Standard Deviation | N     | Mean                | Median | Standard Deviation | N     |
| 15-16       | 6.0                     | 5.9    | 4.1                | 1,006 | 56.2                | 48.0   | 23.0               | 1,006 |
| 16-17       | 6.3                     | 5.9    | 4.1                | 1,093 | 57.3                | 54.0   | 24.7               | 1,093 |
| 17-18       | 6.2                     | 5.9    | 4.2                | 1,713 | 55.9                | 48.0   | 24.4               | 1,713 |
| 18-19       | 6.3                     | 5.9    | 4.3                | 1,734 | 55.3                | 48.0   | 21.3               | 1,734 |
| 19-20       | 6.5                     | 5.9    | 4.2                | 1,071 | 58.8                | 60.0   | 23.3               | 1,071 |
| 20-21       | 6.6                     | 5.9    | 4.3                | 1,166 | 57.1                | 57.0   | 22.2               | 1,166 |
| 21-22       | 6.5                     | 6.0    | 4.3                | 1,568 | 56.6                | 54.2   | 20.6               | 1,568 |
| 22-23       | 6.5                     | 6.0    | 4.2                | 1,658 | 57.2                | 60.0   | 20.5               | 1,658 |



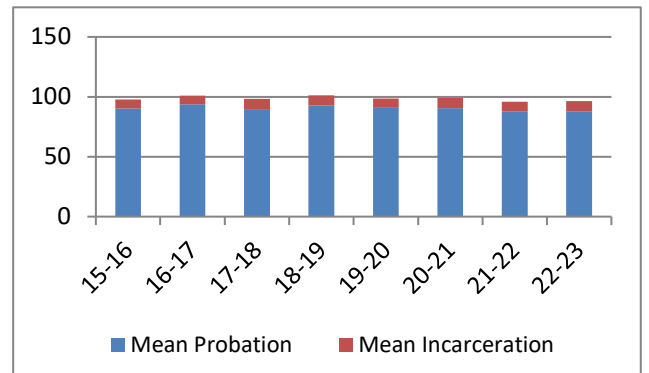
**Average Sentence Length - Class C - Standard Offenders**

| Fiscal Year | Months of Incarceration |        |                    |       | Months of Probation |        |                    |       |
|-------------|-------------------------|--------|--------------------|-------|---------------------|--------|--------------------|-------|
|             | Mean                    | Median | Standard Deviation | N     | Mean                | Median | Standard Deviation | N     |
| 15-16       | 5.7                     | 5.0    | 4.0                | 895   | 51.5                | 48.0   | 18.2               | 895   |
| 16-17       | 6.1                     | 5.9    | 4.1                | 946   | 51.4                | 48.0   | 17.2               | 946   |
| 17-18       | 6.0                     | 5.9    | 4.1                | 1,537 | 51.7                | 48.0   | 21.0               | 1,537 |
| 18-19       | 6.1                     | 5.9    | 4.2                | 1,559 | 50.9                | 48.0   | 16.1               | 1,559 |
| 19-20       | 6.2                     | 5.9    | 4.1                | 918   | 53.2                | 48.0   | 17.6               | 918   |
| 20-21       | 6.4                     | 5.9    | 4.3                | 1,043 | 52.6                | 48.0   | 16.5               | 1,043 |
| 21-22       | 6.2                     | 5.9    | 4.3                | 1,382 | 52.3                | 48.0   | 16.5               | 1,382 |
| 22-23       | 6.2                     | 5.9    | 4.2                | 1,474 | 53.2                | 48.0   | 16.5               | 1,474 |



**Average Sentence Length - Class C - Multiple Offenders**

| Fiscal Year | Months of Incarceration |        |                    |     | Months of Probation |        |                    |     |
|-------------|-------------------------|--------|--------------------|-----|---------------------|--------|--------------------|-----|
|             | Mean                    | Median | Standard Deviation | N   | Mean                | Median | Standard Deviation | N   |
| 15-16       | 7.6                     | 9.0    | 4.5                | 96  | 90.2                | 96.0   | 21.8               | 96  |
| 16-17       | 7.3                     | 6.0    | 4.3                | 131 | 93.8                | 93.0   | 28.0               | 131 |
| 17-18       | 8.7                     | 12.0   | 4.5                | 158 | 89.7                | 96.0   | 19.6               | 158 |
| 18-19       | 8.6                     | 12.0   | 4.4                | 158 | 92.6                | 96.0   | 20.2               | 158 |
| 19-20       | 7.9                     | 8.7    | 4.3                | 130 | 90.7                | 86.5   | 21.6               | 130 |
| 20-21       | 8.6                     | 12.0   | 4.3                | 101 | 90.5                | 95.2   | 19.9               | 101 |
| 21-22       | 8.3                     | 9.1    | 4.2                | 174 | 87.5                | 90.1   | 19.1               | 174 |
| 22-23       | 8.9                     | 12.0   | 3.9                | 156 | 87.6                | 84.0   | 18.7               | 156 |

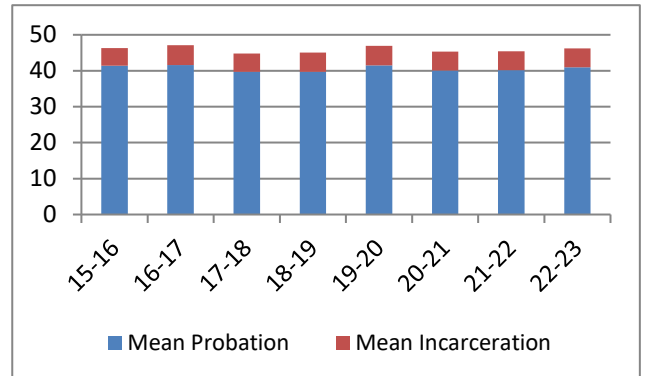


## Average Split Sentence Lengths in Months by Felony Class

Note: Column N indicates the number of felony convictions. Individual offenders can have multiple convictions. Incarceration includes life without parole and death sentences. Probation includes sentences to community corrections.

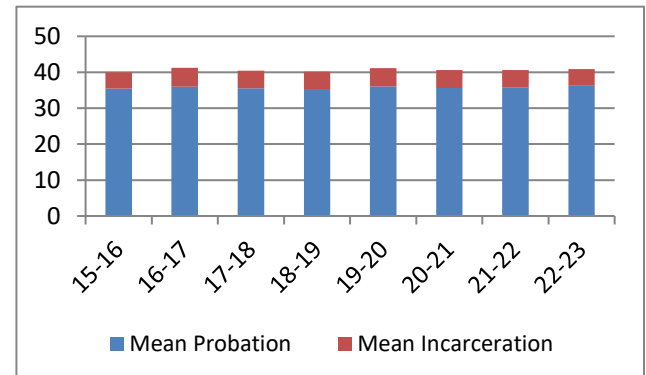
**Average Sentence Length - Class D - All Offenders**

| Fiscal Year | Months of Incarceration |        |                    |       | Months of Probation |        |                    |       |
|-------------|-------------------------|--------|--------------------|-------|---------------------|--------|--------------------|-------|
|             | Mean                    | Median | Standard Deviation | N     | Mean                | Median | Standard Deviation | N     |
| 15-16       | 4.9                     | 3.9    | 3.7                | 988   | 41.4                | 36.0   | 21.2               | 988   |
| 16-17       | 5.5                     | 4.0    | 4.0                | 947   | 41.6                | 36.0   | 22.5               | 947   |
| 17-18       | 5.1                     | 3.9    | 3.9                | 1,214 | 39.7                | 36.0   | 19.0               | 1,214 |
| 18-19       | 5.4                     | 4.0    | 4.0                | 1,223 | 39.7                | 36.0   | 19.6               | 1,223 |
| 19-20       | 5.4                     | 3.9    | 4.7                | 779   | 41.5                | 36.0   | 20.5               | 779   |
| 20-21       | 5.2                     | 3.9    | 4.1                | 780   | 40.1                | 36.0   | 19.1               | 780   |
| 21-22       | 5.2                     | 3.9    | 4.0                | 1,242 | 40.2                | 36.0   | 17.9               | 1,242 |
| 22-23       | 5.2                     | 3.9    | 4.0                | 1,311 | 41.0                | 36.0   | 18.5               | 1,311 |



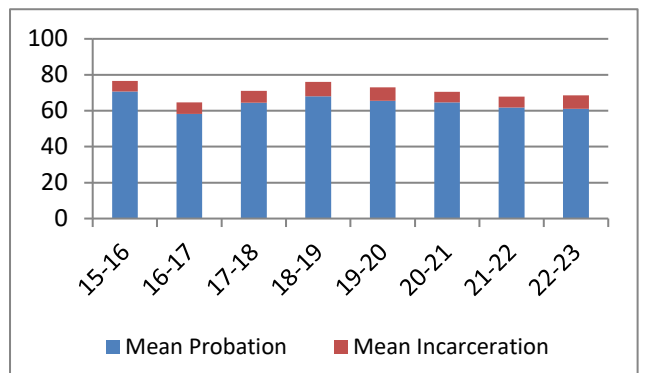
**Average Sentence Length - Class D - Standard Offenders**

| Fiscal Year | Months of Incarceration |        |                    |       | Months of Probation |        |                    |       |
|-------------|-------------------------|--------|--------------------|-------|---------------------|--------|--------------------|-------|
|             | Mean                    | Median | Standard Deviation | N     | Mean                | Median | Standard Deviation | N     |
| 15-16       | 4.6                     | 3.3    | 3.6                | 844   | 35.4                | 36.0   | 13.8               | 844   |
| 16-17       | 5.2                     | 3.9    | 3.9                | 794   | 36.0                | 36.0   | 14.6               | 794   |
| 17-18       | 4.9                     | 3.9    | 3.8                | 1,066 | 35.5                | 36.0   | 13.2               | 1,066 |
| 18-19       | 5.1                     | 3.9    | 3.9                | 1,078 | 35.1                | 36.0   | 13.0               | 1,078 |
| 19-20       | 5.0                     | 3.9    | 4.7                | 661   | 36.1                | 36.0   | 12.7               | 661   |
| 20-21       | 5.0                     | 3.9    | 4.0                | 682   | 35.6                | 36.0   | 11.8               | 682   |
| 21-22       | 4.9                     | 3.9    | 3.9                | 1,074 | 35.7                | 36.0   | 11.1               | 1,074 |
| 22-23       | 4.7                     | 3.0    | 3.8                | 1,115 | 36.2                | 36.0   | 11.8               | 1,115 |



**Average Sentence Length - Class D - Multiple Offenders**

| Fiscal Year | Months of Incarceration |        |                    |     | Months of Probation |        |                    |     |
|-------------|-------------------------|--------|--------------------|-----|---------------------|--------|--------------------|-----|
|             | Mean                    | Median | Standard Deviation | N   | Mean                | Median | Standard Deviation | N   |
| 15-16       | 5.8                     | 5.9    | 3.6                | 106 | 70.7                | 69.0   | 20.4               | 106 |
| 16-17       | 6.4                     | 5.9    | 4.3                | 118 | 58.2                | 60.0   | 19.2               | 118 |
| 17-18       | 6.6                     | 5.9    | 4.4                | 123 | 64.5                | 60.0   | 20.5               | 123 |
| 18-19       | 8.0                     | 9.0    | 4.0                | 126 | 68.1                | 72.0   | 20.5               | 126 |
| 19-20       | 7.4                     | 6.0    | 4.4                | 97  | 65.6                | 60.0   | 22.0               | 97  |
| 20-21       | 5.9                     | 4.9    | 4.2                | 76  | 64.6                | 60.0   | 20.2               | 76  |
| 21-22       | 6.0                     | 5.7    | 3.8                | 137 | 61.8                | 60.0   | 17.6               | 137 |
| 22-23       | 7.4                     | 6.0    | 4.3                | 160 | 61.1                | 60.0   | 18.9               | 160 |

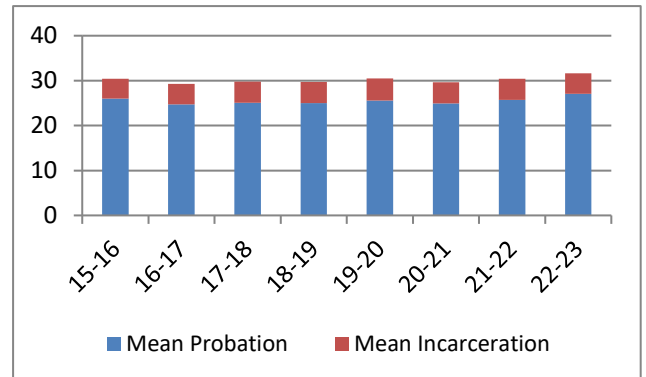


## Average Split Sentence Lengths in Months by Felony Class

Note: Column N indicates the number of felony convictions. Individual offenders can have multiple convictions. Incarceration includes life without parole and death sentences. Probation includes sentences to community corrections.

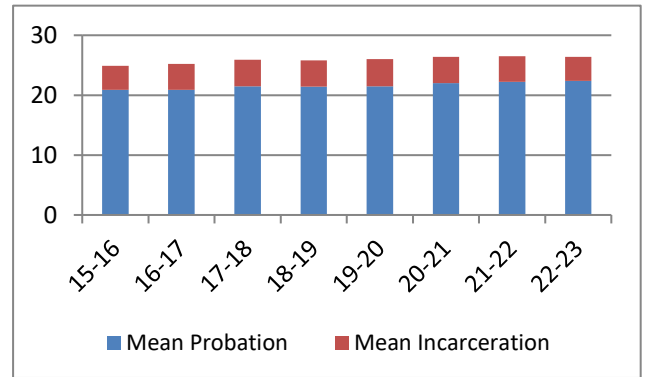
**Average Sentence Length - Class E - All Offenders**

| Fiscal Year | Months of Incarceration |        |                    |       | Months of Probation |        |                    |       |
|-------------|-------------------------|--------|--------------------|-------|---------------------|--------|--------------------|-------|
|             | Mean                    | Median | Standard Deviation | N     | Mean                | Median | Standard Deviation | N     |
| 15-16       | 4.4                     | 3.0    | 3.4                | 1,257 | 26.0                | 24.0   | 19.0               | 1,257 |
| 16-17       | 4.6                     | 3.7    | 3.4                | 1,274 | 24.7                | 24.0   | 14.7               | 1,274 |
| 17-18       | 4.7                     | 3.9    | 3.4                | 1,711 | 25.1                | 24.0   | 13.3               | 1,711 |
| 18-19       | 4.7                     | 3.3    | 3.6                | 1,685 | 25.0                | 24.0   | 14.3               | 1,685 |
| 19-20       | 4.9                     | 3.9    | 3.6                | 1,013 | 25.6                | 24.0   | 15.0               | 1,013 |
| 20-21       | 4.7                     | 3.0    | 3.7                | 872   | 24.9                | 24.0   | 12.9               | 872   |
| 21-22       | 4.7                     | 3.2    | 3.7                | 1,350 | 25.7                | 24.0   | 12.3               | 1,350 |
| 22-23       | 4.5                     | 3.0    | 3.4                | 1,471 | 27.1                | 24.0   | 14.6               | 1,471 |



**Average Sentence Length - Class E - Standard Offenders**

| Fiscal Year | Months of Incarceration |        |                    |       | Months of Probation |        |                    |       |
|-------------|-------------------------|--------|--------------------|-------|---------------------|--------|--------------------|-------|
|             | Mean                    | Median | Standard Deviation | N     | Mean                | Median | Standard Deviation | N     |
| 15-16       | 4.0                     | 3.0    | 2.9                | 1,019 | 20.9                | 22.3   | 10.6               | 1,019 |
| 16-17       | 4.3                     | 3.0    | 3.2                | 1,035 | 20.9                | 24.0   | 10.3               | 1,035 |
| 17-18       | 4.4                     | 3.3    | 3.2                | 1,422 | 21.5                | 24.0   | 10.0               | 1,422 |
| 18-19       | 4.4                     | 3.0    | 3.4                | 1,382 | 21.4                | 24.0   | 10.7               | 1,382 |
| 19-20       | 4.5                     | 3.0    | 3.4                | 815   | 21.5                | 24.0   | 10.7               | 815   |
| 20-21       | 4.4                     | 3.0    | 3.6                | 746   | 22.0                | 24.0   | 10.0               | 746   |
| 21-22       | 4.3                     | 3.0    | 3.5                | 1,096 | 22.2                | 24.0   | 8.6                | 1,096 |
| 22-23       | 4.0                     | 3.0    | 3.1                | 1,131 | 22.4                | 24.0   | 11.0               | 1,131 |



**Average Sentence Length - Class E - Multiple Offenders**

| Fiscal Year | Months of Incarceration |        |                    |     | Months of Probation |        |                    |     |
|-------------|-------------------------|--------|--------------------|-----|---------------------|--------|--------------------|-----|
|             | Mean                    | Median | Standard Deviation | N   | Mean                | Median | Standard Deviation | N   |
| 15-16       | 6.1                     | 5.0    | 4.3                | 186 | 44.3                | 36.0   | 30.3               | 186 |
| 16-17       | 5.6                     | 4.9    | 3.7                | 192 | 36.4                | 36.0   | 11.8               | 192 |
| 17-18       | 6.0                     | 4.9    | 4.0                | 239 | 38.7                | 36.0   | 11.0               | 239 |
| 18-19       | 5.9                     | 5.9    | 4.0                | 241 | 36.1                | 36.0   | 12.4               | 241 |
| 19-20       | 6.0                     | 5.9    | 3.9                | 141 | 35.5                | 36.0   | 13.2               | 141 |
| 20-21       | 6.3                     | 5.9    | 4.2                | 102 | 36.9                | 36.0   | 11.5               | 102 |
| 21-22       | 5.9                     | 5.9    | 4.0                | 204 | 36.7                | 36.0   | 11.1               | 204 |
| 22-23       | 5.8                     | 5.1    | 4.0                | 268 | 38.0                | 36.0   | 9.5                | 268 |

